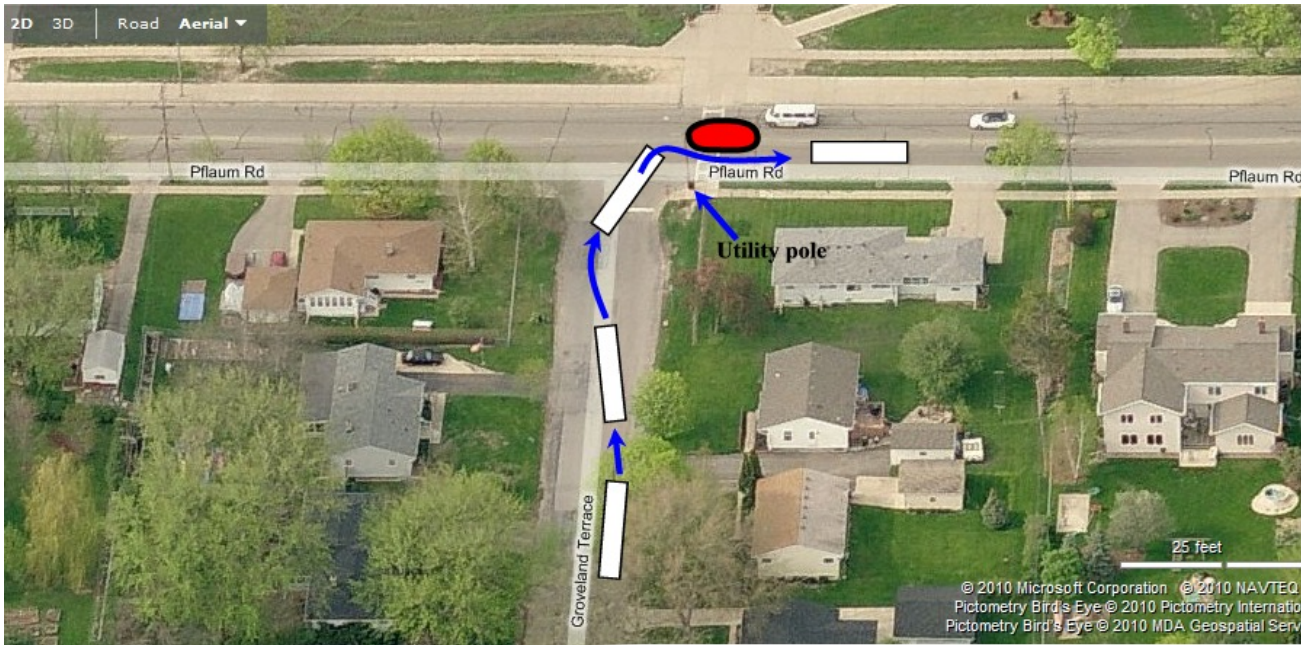


Problematic Right Turn from Northbound Groveland Terrace onto Eastbound Pflaum Rd



Buses need to use all of the northbound lane of Groveland Terrace plus at least half of the southbound lane in order to set up for the turn, clear the utility pole on the S.E. corner of the intersection, while simultaneously minimizing the amount of encroachment of the front bumper over the center island on Pflaum Road.



Even with an adequate “set up” for the turn, the front bumper of the bus still sweeps out over the center island. There have been occasions when buses have backed up in the intersection to avoid either the utility pole in the S.E. corner, or the light pole mounted in the island.



When snow gets piled to the sides of the street, this will have the effect of further narrowing Groveland Terrace and making the turn even more difficult.