



Imagination Center at Reindahl Park

Urban Design Commission, Informational Presentation
October 18, 2023

Name	Imagination Center at Reindahl Park		
Project Type	City Facility - Library and Park Pavilion		
City Agency	Madison Public Library Parks Division Information Technology Department		
Location	1818 Parkside Dr, and 1814 Parkside Dr		
Alder District	District 12		
Status	Design Development		
Schedule	Phase	Start	End
	Design Development	2023-Q4	2024-Q1
	Construction Documents	2024-Q1	2024-Q2
	Bidding	2024-Q2	2024-Q4
	Construction	2024-Q4	2026-Q2



IMAGINATION CENTER AT REINDAHL PARK

SCHEMATIC DESIGN DOCUMENT

SEPTEMBER 18, 2023





JLA
ARCHITECTS

MADISON | MILWAUKEE | DENVER
JLA-AP.COM

JLA PROJECT NUMBER: 20-0928



IMAGINATION CENTER AT REINDAHL PARK

SCHEMATIC DESIGN

PROGRESS DOCUMENTS

These documents reflect progress and intent and may be subject to change, including additional detail. These are not final construction documents and should not be used for final bidding or construction-related purposes.

DATE OF ISSUANCE: SEPTEMBER 18, 2023

REVISION SCHEDULE

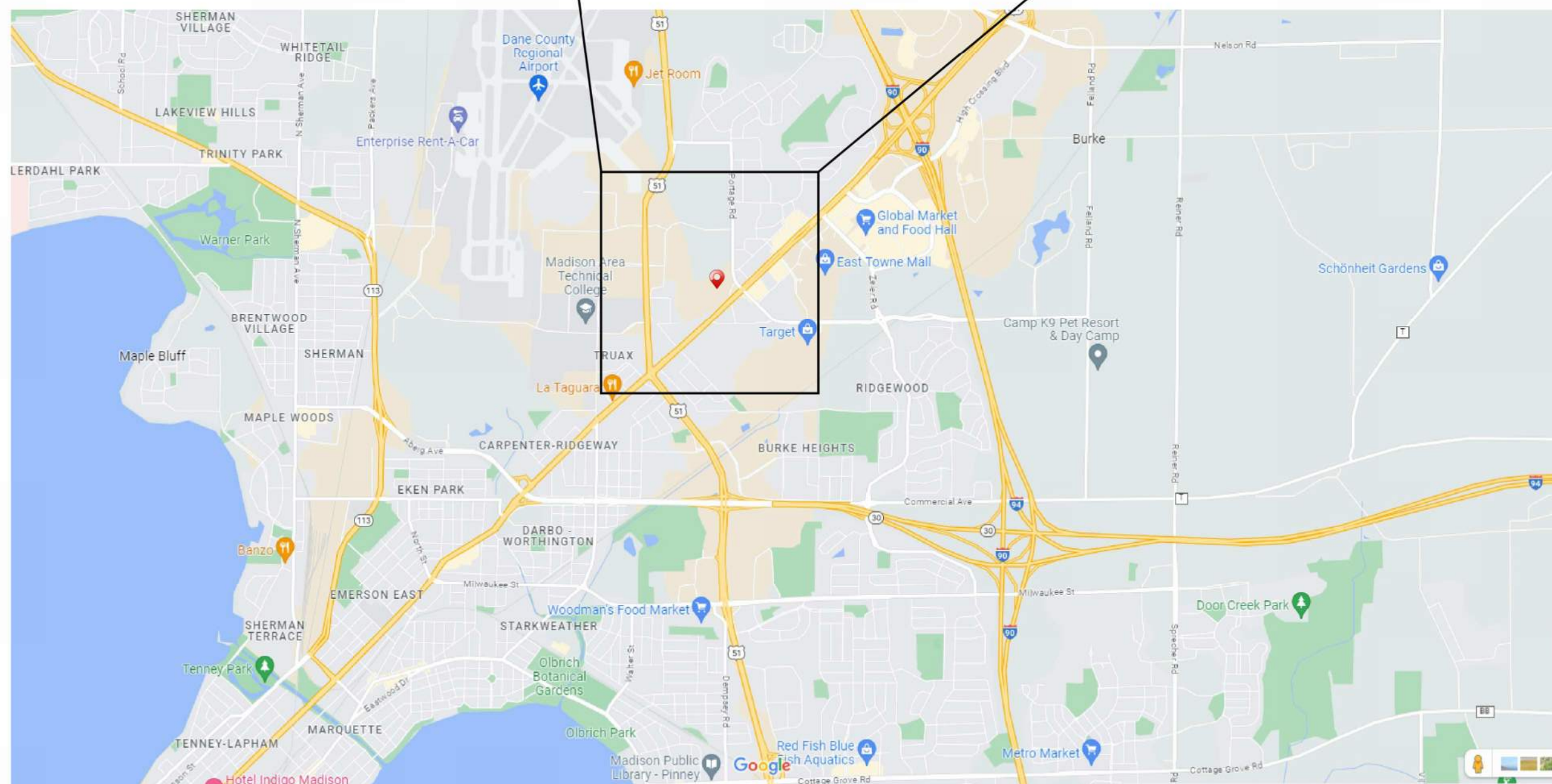
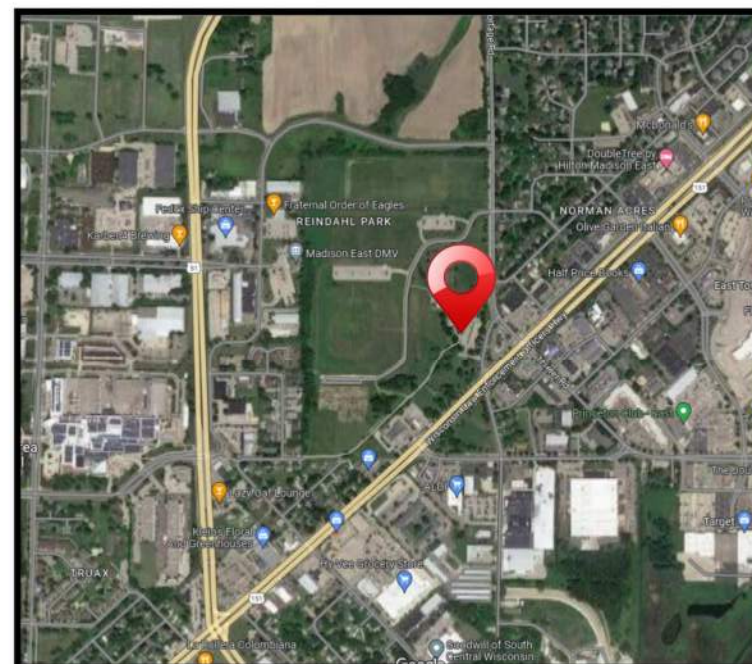
Mark	Description	Date

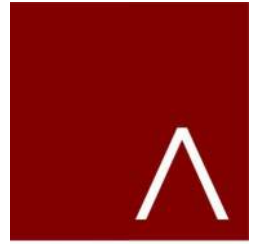
SHEET TITLE

LOCATOR
MAP

SHEET NUMBER

G001





JLA
ARCHITECTS
MADISON | MILWAUKEE | DENVER
JLA-AP.COM

JLA PROJECT NUMBER: 20-0928



MADISON
PUBLIC
LIBRARY

play
**MADISON
PARKS**

IMAGINATION CENTER
AT REINDAHL PARK

SCHEMATIC DESIGN

PROGRESS DOCUMENTS

These documents reflect progress and intent and may be subject to change, including additional detail. These are not final construction documents and should not be used for final bidding or construction-related purposes.

DATE OF ISSUANCE: SEPTEMBER 18, 2023

REVISION SCHEDULE		
Mark	Description	Date

SHEET TITLE

SITE CONTENT

SHEET NUMBER

G002



1

EAST WASHINGTON AVENUE FACING NORTH-EAST



2

EAST WASHINGTON AVENUE FACING SOUTH-WEST



3

EXISTING SITE FROM VEHICULAR ENTERANCE



4

EXISTING SITE FROM SOUTH PEDESTRIAN PATH



JLA
ARCHITECTS
MADISON | MILWAUKEE | DENVER
JLA-AP.COM

JLA PROJECT NUMBER: 20-0928



MADISON
PUBLIC
LIBRARY

play
MADISON
PARKS

IMAGINATION CENTER
AT REINDAHL PARK

SCHEMATIC DESIGN

PROGRESS DOCUMENTS

These documents reflect progress and intent and may be subject to change, including additional detail. These are not final construction documents and should not be used for final bidding or construction-related purposes.

DATE OF ISSUANCE: SEPTEMBER 18, 2023

REVISION SCHEDULE

Mark	Description	Date

SHEET TITLE

SITE PHOTOS

SHEET NUMBER

G003



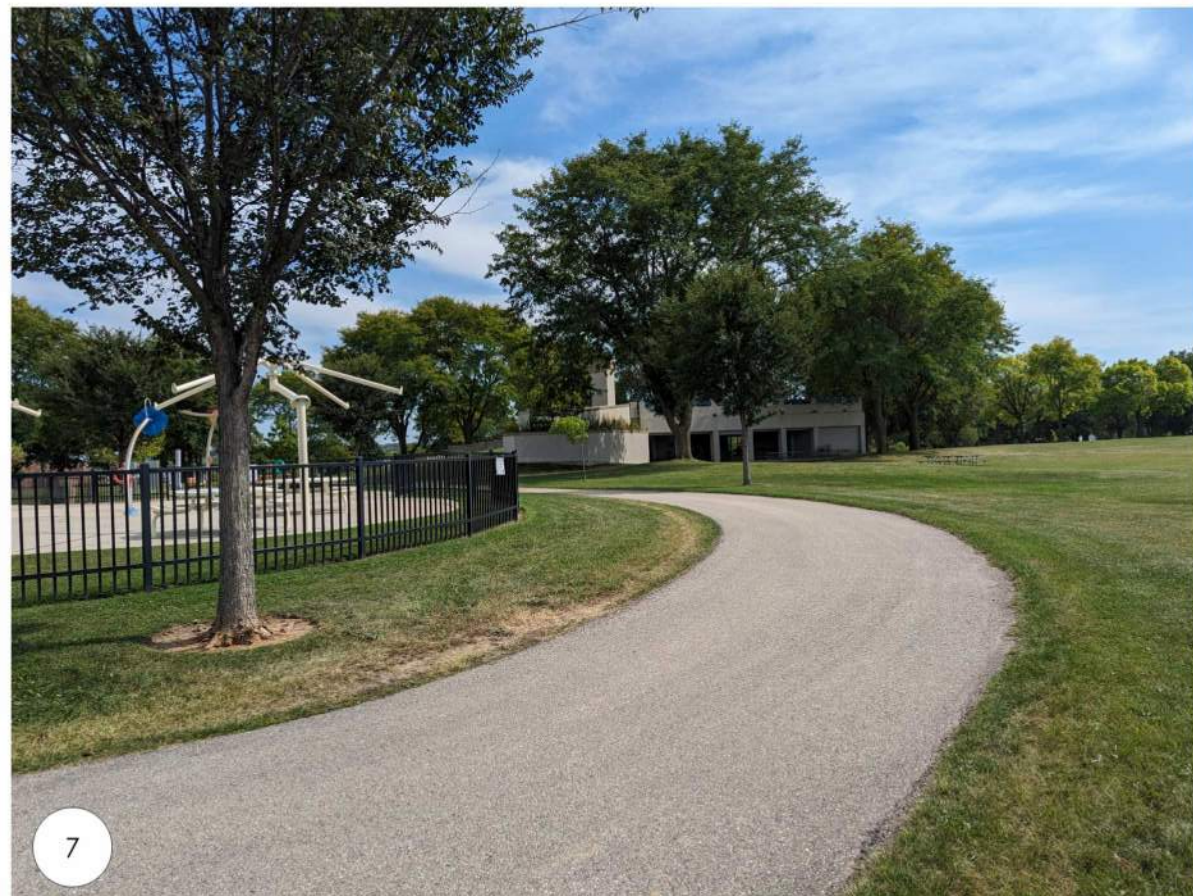
5

PORTAGE ROAD FACING SOUTH



6

PORTAGE ROAD FACING NORTH



7

EXISTING SITE FROM SPLASH



8

EXISTING BUILDING



JLA
ARCHITECTS
MADISON | MILWAUKEE | DENVER
JLA-AP.COM

JLA PROJECT NUMBER: 20-0928



MADISON
PUBLIC
LIBRARY

play
MADISON
PARKS

IMAGINATION CENTER
AT REINDAHL PARK

SCHEMATIC DESIGN

PROGRESS DOCUMENTS

These documents reflect progress and intent and may be subject to change, including additional detail. These are not final construction documents and should not be used for final bidding or construction-related purposes.

DATE OF ISSUANCE: SEPTEMBER 18, 2023

REVISION SCHEDULE

Mark	Description	Date

SHEET TITLE

SITE PHOTOS

SHEET NUMBER

G004



9

NEAR BY OFFICE DEPOT



10

NEAR BY POPEYE'S



11

NEAR BY WENDY'S



JLA
ARCHITECTS
MADISON | MILWAUKEE | DENVER
JLA-AP.COM

JLA PROJECT NUMBER: 20-0928



IMAGINATION CENTER
AT REINDAHL PARK

SCHEMATIC DESIGN

PROGRESS DOCUMENTS

These documents reflect progress and intent and may be subject to change, including additional detail. These are not final construction documents and should not be used for final bidding or construction-related purposes.

DATE OF ISSUANCE: SEPTEMBER 18, 2023

REVISION SCHEDULE

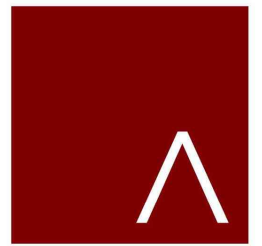
Mark	Description	Date

SHEET TITLE

SITE PHOTOS

SHEET NUMBER

G005



JLA
ARCHITECTS
MADISON | MILWAUKEE | DENVER
JLA-AP.COM



JLA PROJECT NUMBER: 20-0928



MADISON
PUBLIC
LIBRARY

play
**MADISON
PARKS**

IMAGINATION CENTER
AT REINDAHL PARK

SCHEMATIC DESIGN

PROGRESS DOCUMENTS

These documents reflect progress and intent and may be subject to change, including additional details. These are not final construction documents and should not be used for final bidding or construction-related purposes.

DATE OF ISSUANCE: MARCH 22, 2023

REVISION SCHEDULE		
Mark	Description	Date

SHEET TITLE
**SITE
RENDERING**

SHEET NUMBER

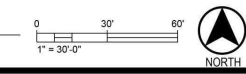
L402



LEGEND

[Symbol]	PLANTING BED
[Symbol]	LAWN
[Symbol]	NATIVE SEED MIX
[Symbol]	STORMWATER MANAGEMENT AREA
[Symbol]	STANDARD CONCRETE
[Symbol]	HEAVY DUTY CONCRETE
[Symbol]	DECORATIVE CONCRETE
[Symbol]	NEW ASPHALT
[Symbol]	GRAVEL PATH
[Symbol]	METAL BED EDGING
[Symbol]	SPADED BED EDGING
[Symbol]	STONE MAINTENANCE EDGE
[Symbol]	PRECAST CONCRETE BENCH
[Symbol]	POTENTIAL ART LOCATION
[Symbol]	PICNIC TABLE
[Symbol]	ROUND TABLE AND CHAIRS
[Symbol]	BISTRO TABLE
[Symbol]	BBQ GRILL
[Symbol]	TRASH / RECYCLING RECEPTACLE
[Symbol]	EXISTING EVERGREEN TREE
[Symbol]	EXISTING DECIDUOUS TREE
[Symbol]	PROPOSED EVERGREEN TREE
[Symbol]	PROPOSED ORNAMENTAL TREE
[Symbol]	PROPOSED SHADE TREE

1 Site Rendering
SCALE: 1"=30'-0"





JLA
ARCHITECTS
MADISON | MILWAUKEE | DENVER
JLA-AP.COM

JLA PROJECT NUMBER: 20-0928



MADISON
PUBLIC
LIBRARY

play
MADISON
PARKS

IMAGINATION CENTER
AT REINDAHL PARK

DESIGN DEVELOPMENT

PROGRESS DOCUMENTS

These documents reflect progress and intent and may be subject to change, including additional details. These are not final construction documents and should not be used for final bidding or construction-related purposes.

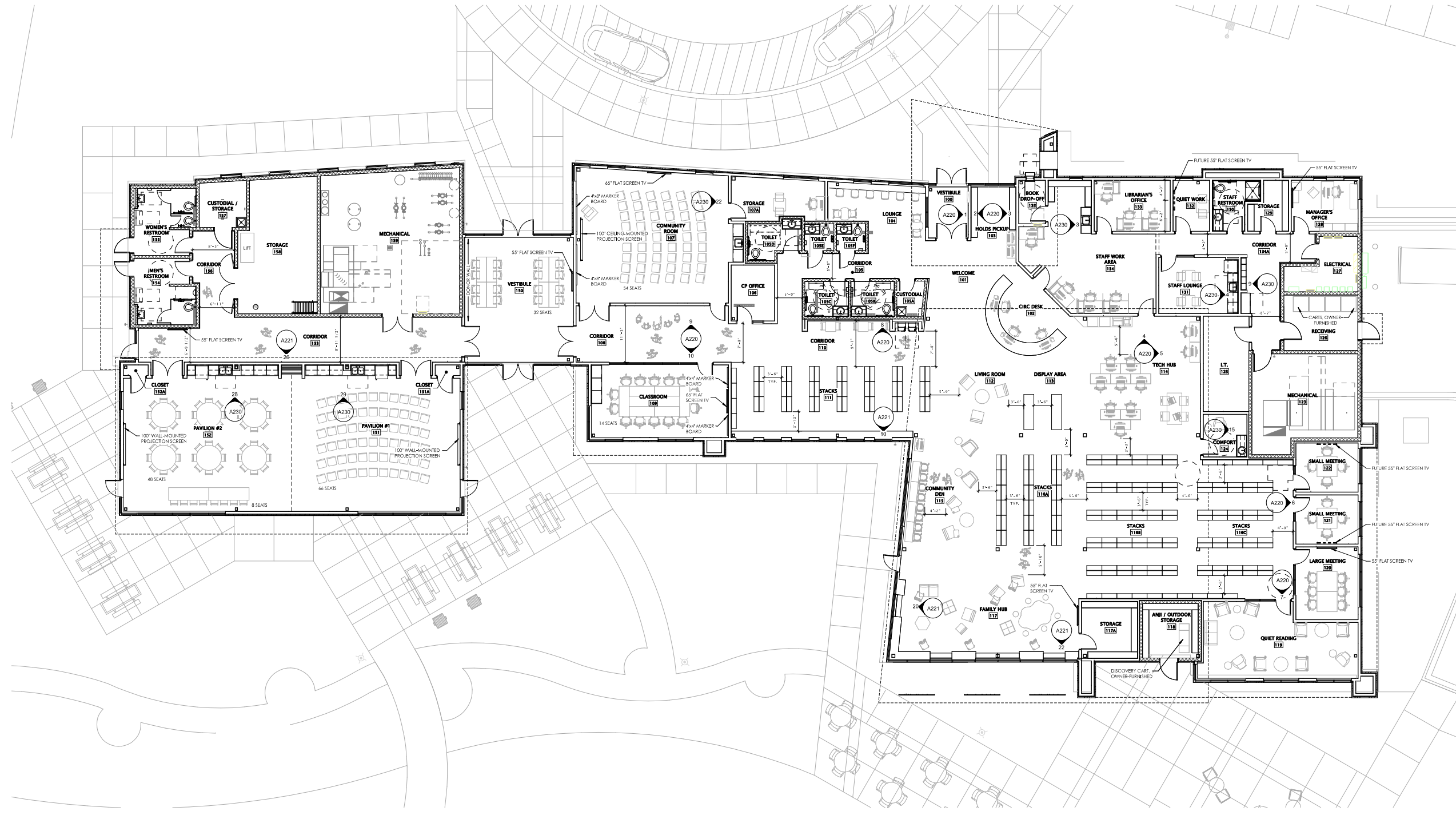
DATE OF ISSUANCE: OCTOBER 11, 2023

Mark	Description	Date

SHEET TITLE
**FURNITURE,
TECHNOLOGY, &
SPACING PLAN**

SHEET NUMBER

A131



26 FIRST FLOOR FURNITURE AND INTERIOR SPACING PLAN
1/8" = 1'-0"

10/17/2023 11:53:32 AM



JLA
ARCHITECTS
MADISON | MILWAUKEE | DENVER
JLA-AP.COM

JLA PROJECT NUMBER: 20-0928



MADISON
PUBLIC
LIBRARY

play
MADISON
PARKS

IMAGINATION CENTER
AT REINDAHL PARK

SCHEMATIC DESIGN

PROGRESS DOCUMENTS

These documents reflect progress and intent and may be subject to change, including additional detail. These are not final construction documents and should not be used for final bidding or construction-related purposes.

DATE OF ISSUANCE AUGUST 18, 2023

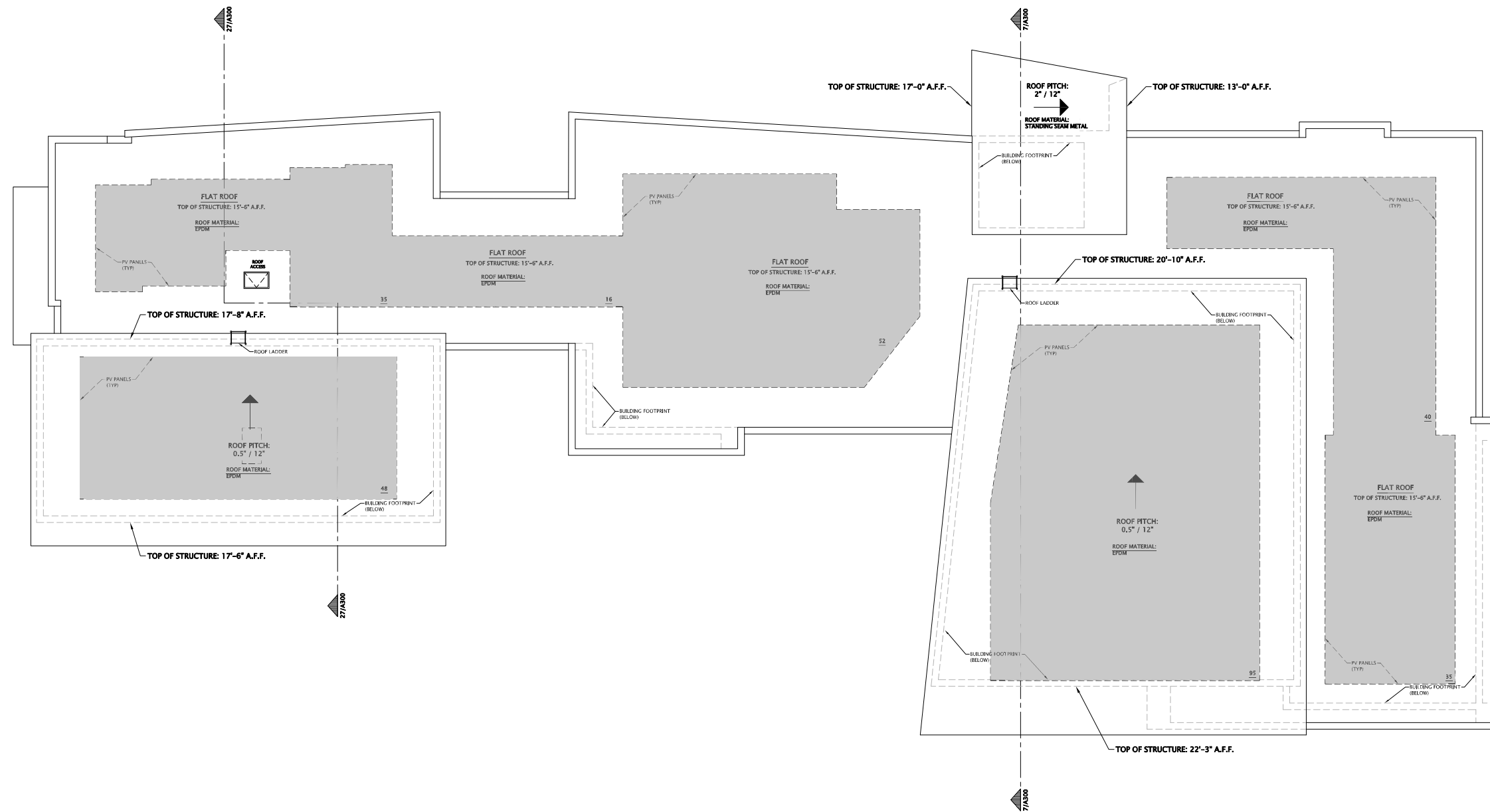
REVISION SCHEDULE		
Mark	Description	Date

SHEET TITLE

ROOF PLAN

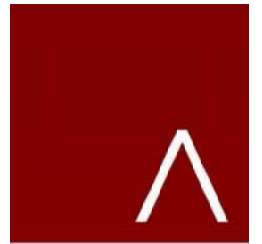
SHEET NUMBER

A103



26 ROOF PLAN
1/8" = 1'-0"

3/18/2023 3:48:00 PM



JLA
ARCHITECTS
MADISON | MILWAUKEE | DENVER
JLA-AP.COM

JLA PROJECT NUMBER: 20-0928



MADISON
PUBLIC
LIBRARY

play
MADISON
PARKS

IMAGINATION CENTER
AT REINDAHL PARK

SCHEMATIC DESIGN

PROGRESS DOCUMENTS

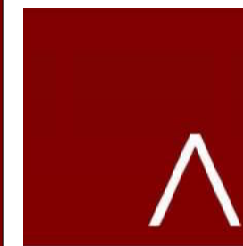
These documents reflect progress and intent and may be subject to change, including additional detail. These are not final construction documents and should not be used for final bidding or construction-related purposes.

DATE OF ISSUANCE AUGUST 18, 2023

REVISION SCHEDULE		
Mark	Description	Date

SHEET TITLE
**EXTERIOR
RENDERINGS**

SHEET NUMBER
A211



JLA
ARCHITECTS
MADISON | MILWAUKEE | DENVER
JLA-AP.COM

JLA PROJECT NUMBER: 20-0928



MADISON
PUBLIC
LIBRARY

play
MADISON
PARKS

IMAGINATION CENTER
AT REINDAHL PARK

SCHEMATIC DESIGN

PROGRESS DOCUMENTS

These documents reflect progress and intent and may be subject to change, including additional detail. These are not final construction documents and should not be used for final bidding or construction-related purposes.

DATE OF ISSUANCE: AUGUST 18, 2023

REVISION SCHEDULE

Mark	Description	Date

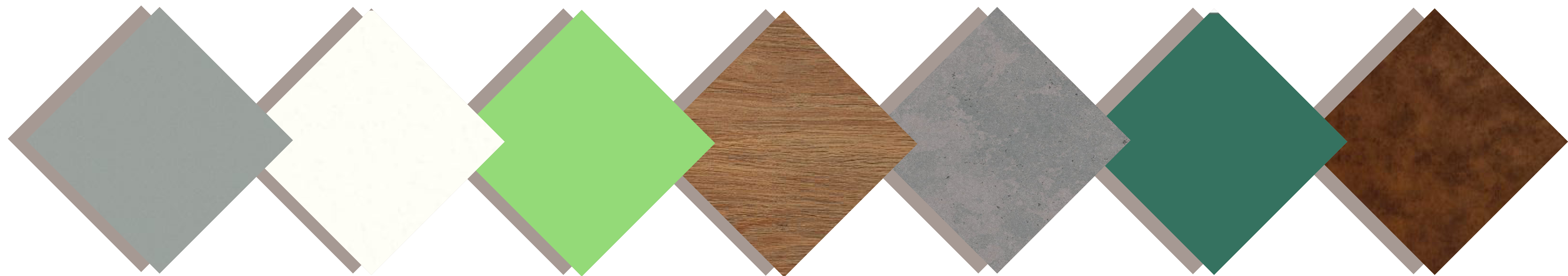
SHEET TITLE

EXTERIOR
RENDERINGS

SHEET NUMBER

A213

EXTERIOR MATERIAL SELECTIONS



ZINC GRAY
TRESPA LAMINATED PANEL

PURE WHITE
TRESPA LAMINATED PANEL

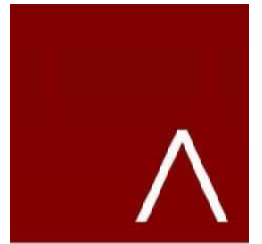
SPRING GREEN
TRESPA LAMINATED PANEL

MILANO TERRA
TRESPA LAMINATED PANEL

TEMPERED GRAY
TRESPA LAMINATED PANEL

MID GREEN
TRESPA LAMINATED PANEL

RUSTED METAL
TRESPA LAMINATED PANEL



JLA
ARCHITECTS
MADISON | MILWAUKEE | DENVER
JLA-AP.COM

JLA PROJECT NUMBER: 20-0928



MADISON
PUBLIC
LIBRARY

play
MADISON
PARKS

IMAGINATION CENTER
AT REINDAHL PARK

SCHEMATIC DESIGN

PROGRESS DOCUMENTS

These documents reflect progress and intent and may be subject to change, including additional detail. These are not final construction documents and should not be used for final bidding or construction-related purposes.

DATE OF ISSUANCE AUGUST 18, 2023

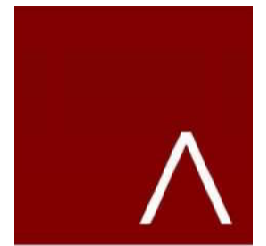
REVISION SCHEDULE		
Mark	Description	Date

SHEET TITLE

EXTERIOR
RENDERINGS

SHEET NUMBER

A210



JLA
ARCHITECTS
MADISON | MILWAUKEE | DENVER
JLA-AP.COM

JLA PROJECT NUMBER: 20-0928



MADISON
PUBLIC
LIBRARY

play
MADISON
PARKS

IMAGINATION CENTER
AT REINDAHL PARK

SCHEMATIC DESIGN

PROGRESS DOCUMENTS

These documents reflect progress and intent and may be subject to change, including additional detail. These are not final construction documents and should not be used for final bidding or construction-related purposes.

DATE OF ISSUANCE: AUGUST 18, 2023

REVISION SCHEDULE		
Mark	Description	Date

SHEET TITLE
**EXTERIOR
RENDERINGS**

SHEET NUMBER
A212

EXTERIOR MATERIALS SCHEDULE		
MARK	MANUFACTURER	COLOR
1	TRESPA WALL PANELS	MILANO TERRA
2	TRESPA WALL PANELS	TEMPERED GREY
3	TRESPA WALL PANELS	MID-GREEN
4	TRESPA WALL PANELS	PURE WHITE
5	TRESPA WALL PANELS	ZINC GREY
6	TRESPA WALL PANELS	SPRING GREEN
7	ALUCOBOND WALL PANELS	RUSTED METAL
8	INSULATED ALUMINUM STOREFRONT	CLEAR ANODIZED
9	ALUMINUM STOREFRONT SPANDREL GLAZING	CLEAR ANODIZED
10	INSULATED ALUMINUM CURTAINWALL	CLEAR ANODIZED
11	TRESPA-WRAPPED WALL OPENINGS	MID-GREEN
12	TRESPA SOFFIT PANELS	MILANO TERRA

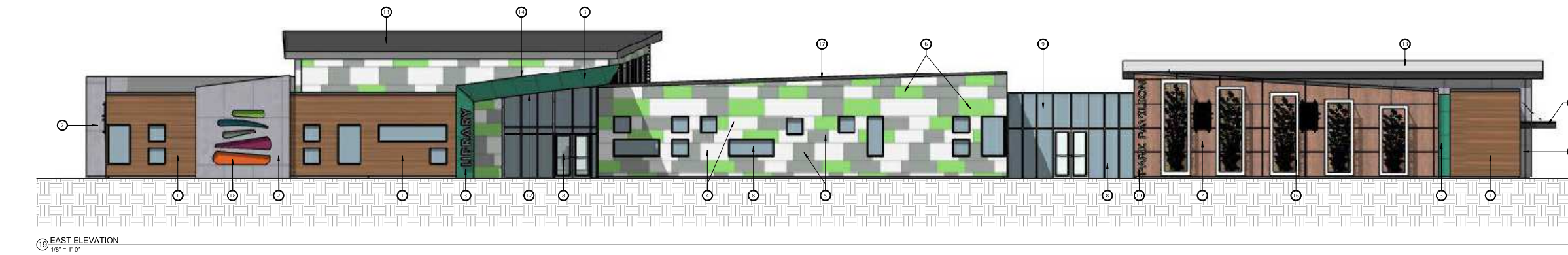
EXTERIOR MATERIALS SCHEDULE		
MARK	MANUFACTURER	COLOR
13	EDPM ROOF	BLACK
14	STANDING SEAM METAL ROOF	TO MATCH TRESPA MID-GREEN
15	METAL ROOF AWNING	BLACK
16	METAL & CABLE RAIL WALL TRELLIS	WHITE
17	METAL WALL COPING	DARK GREY
18	BUILDING LOGO	TBD
19	DIMENSIONAL BUILDING LETTERING	TBD
20	EXTERIOR SHADING DEVICE	TBD
21	ART INSTALLATION	TBD
22	INSULATED HOLLOW METAL DOOR	DARK GREY
23	ANJLI PLAY WALL	MATERIAL TBD



14 NORTH ELEVATION
1/8" = 1'-0"



15 SOUTH ELEVATION
1/8" = 1'-0"



16 EAST ELEVATION
1/8" = 1'-0"



25 WEST ELEVATION
1/8" = 1'-0"



JLA
ARCHITECTS
MADISON | MILWAUKEE | DENVER
JLA-AP.COM

JLA PROJECT NUMBER: 20-0928



MADISON
PUBLIC
LIBRARY

play
MADISON
PARKS

IMAGINATION CENTER
AT REINDAHL PARK

SCHEMATIC DESIGN

PROGRESS DOCUMENTS

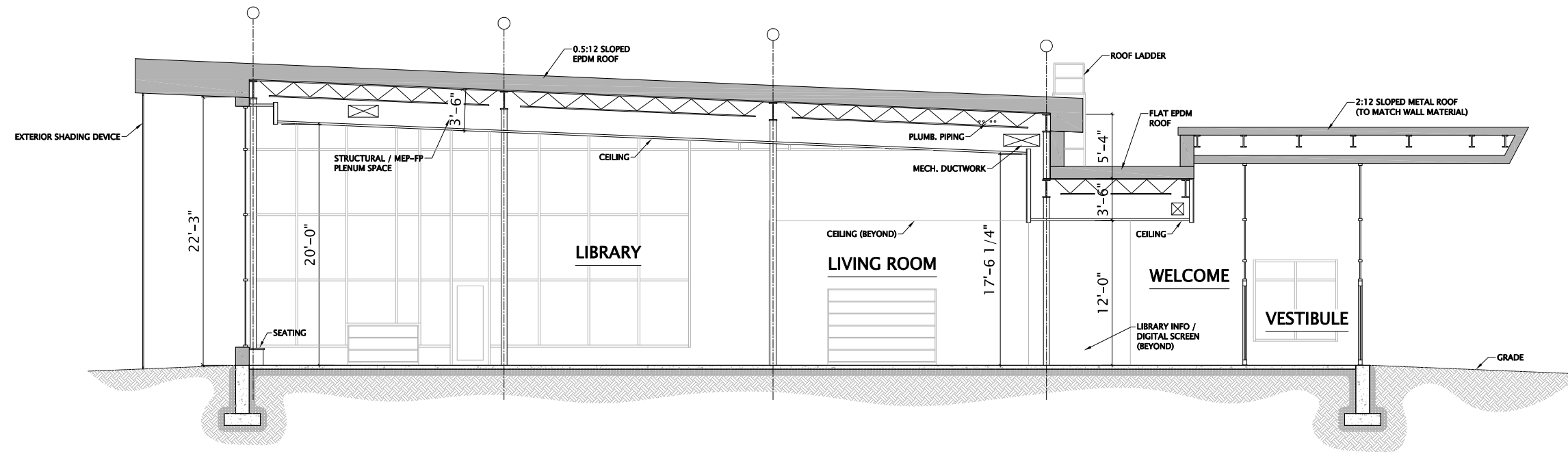
These documents reflect progress and intent and may be subject to change, including additional detail. These are not final construction documents and should not be used for final bidding or construction-related purposes.

DATE OF ISSUANCE AUGUST 18, 2023

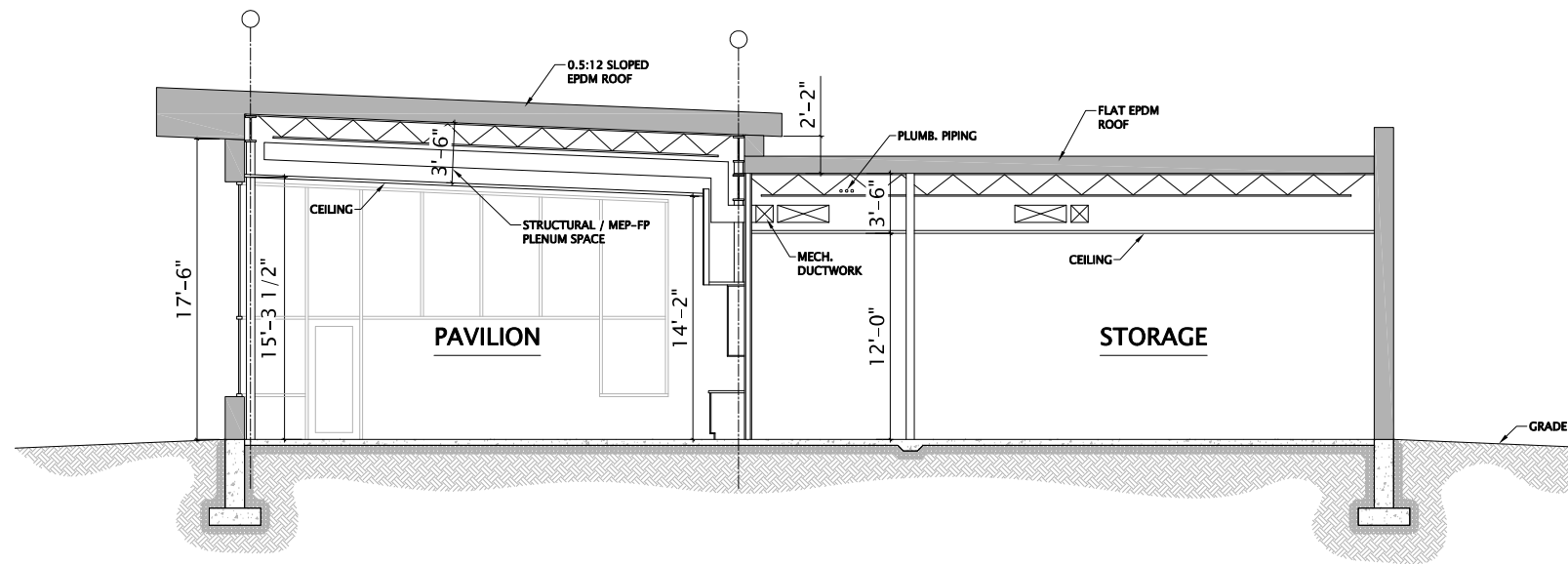
REVISION SCHEDULE		
Mark	Description	Date

SHEET TITLE
EXTERIOR
ELEVATIONS

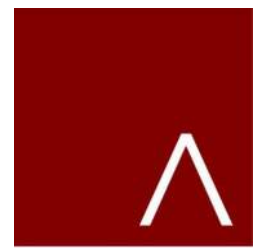
SHEET NUMBER
A200



7 BUILDING SECTION
1/4" = 1'-0"



8 BUILDING SECTION
1/4" = 1'-0"



JLA
ARCHITECTS
MADISON | MILWAUKEE | DENVER
JLA-AP.COM

JLA PROJECT NUMBER: 20-0928



MADISON
PUBLIC
LIBRARY

play
MADISON
PARKS

IMAGINATION CENTER
AT REINDAHL PARK

SCHEMATIC DESIGN

PROGRESS DOCUMENTS

These documents reflect progress and intent and may be subject to change, including additional detail. These are not final construction documents and should not be used for final bidding or construction-related purposes.

DATE OF ISSUANCE: AUGUST 18, 2023

REVISION SCHEDULE		
Mark	Description	Date

SHEET TITLE

BUILDING SECTIONS

SHEET NUMBER

A300