



Department of Planning & Community & Economic Development
Planning Division

Website: www.cityofmadison.com

Madison Municipal Building, Suite LL100
215 Martin Luther King, Jr. Boulevard
P.O. Box 2985
Madison, Wisconsin 53701-2985
FAX 608 267-8739
PH 608 266-4635

TO: Members of the CDBG Committee

FROM: Linda Horvath, Urban Planner, Planning Division

DATE: November 26, 2013

SUBJECT: Status Report: Emerson East-Eken Park-Yahara Neighborhood Plan

The Common Council authorized a concentration neighborhood planning process and appointment of an Ad-Hoc steering committee for a study area (Figure 1) that includes the Emerson East and Eken Park Neighborhoods, and the Lake Superior Street and Yahara areas (Legistar Enactment No. RES-13-00180, File ID 29188 and Legistar Amending Resolution, Enactment No. RES-13-00180, File ID 29188). The purpose of the planning process is to prepare a mid-range (10-15 year) neighborhood plan that clearly describes the study area's vision, values, and goals.

Comprehensive Plan

The plan will be reviewed by City Committees and Commissions and adopted by the Common Council as a supplement of the City's Comprehensive Plan. The plan will include a vision, goals, recommendations and implementation actions to improve the aesthetic or function of the neighborhood. Strategies and recommendations will be considered for the areas of:

- community facilities,
- economic development,
- historic & cultural resources,
- housing,
- intergovernmental cooperation,
- land use,
- natural & agricultural resources,
- parks and open space,
- transportation,
- utilities.

Open House

The planning process will include development of a public engagement plan with four Public Open House events, and numerous focus groups, stakeholder interviews, and other engagement opportunities. City staff members, alders and neighborhood leaders held Public Open House I on September 18, 2013 to introduce the planning process, share background data and other information about the planning study area, recruit additional steering committee candidates, and solicit input from participants. A compilation of this input is on the neighborhood plan webpage: <http://www.cityofmadison.com/planning/eeep.html>. A snapshot of some of the many comments shared is included below:

Issues: scarce wildlife habitat; water quality concerns; brownfields; discontinuity of bike paths and poor access to northside via bike; pedestrian and bike safety throughout study area and especially at 1st & E. Washington Ave. and 1st & E. Johnson St.; speeding on Hoard St.; lack of access to fresh fruits and vegetables and other healthy foods; noise from airport and Oscar Meyer plant.

Opportunities: enhance access to the Yahara River from the study area; establish a community garden; bring more social events to parks; create more of a neighborhood center; improve pedestrian and bike safety at major intersections; support new local start-up businesses to meet unmet needs; encourage Dane County Job Center to reach out to neighborhood concerning employment resources; encourage big employers to host job fairs at MATC-Commercial Avenue campus; consider establishing incubators for entrepreneurs/creative centers; encourage mixed-use development; add a grocery store.

Recruitment

In order to create a steering committee that is as representative as possible of the study area's residents, businesses, and other stakeholders, recruitment of steering committee members included multiple announcements in 2013 about the planning process and steering committee through neighborhood association meetings, direct mailings, neighborhood and planning council listservs, newsletters, newspapers, businesses, the library, places of worship and at Public Open House I.

Mayor Appointments

The Mayor will submit his appointments to the Common Council on December 3 (Legistar File #32314). The appointments are expected to be confirmed by the Common Council on January 7.

ARTHUR M. HACKETT (12th A.D.) - appoint to the position of Eken Park Neighborhood Resident. Mr. Hackett serves as the chair of the Eken Park Neighborhood Association and has been a homeowner in the neighborhood for the past 32 years.

KEELY M. MERCHANT (12th A.D.) - appoint to the position of Eken Park Neighborhood Resident. Ms. Merchant is an active member of the Eken Park Neighborhood Association.

AMY L. KLUSMEIER (12th A.D.) - appoint to the position of Eken Park Neighborhood Resident. Ms. Klusmeier has a Masters of Science from UW-Madison in Urban and Regional Planning.

ADRIENNE L. SELLA (12th A.D.) - appoint to the position of Emerson East Neighborhood Resident. Ms. Sella is the Area 2 representative for the Emerson East Neighborhood Association.

DAVID A. ALBINO (12th A.D.) - appoint to the position of Emerson East Neighborhood Resident. Mr. Albino is a UW-Madison Urban and Regional Planning Masters student and Chairman of Wisconsin Student Planning Association. David is currently serving on the Sustainable Madison Committee.

DOUGLAS BUEGE (2nd A.D.) - appoint to the position of Yahara Area Resident. Mr. Buege is a long-term resident of Sherman Terrace Condominiums and a community volunteer.

AARON E. ONSRUD (2nd A.D.) - appoint to the position of Yahara Area Resident. Mr. Onsrud has experience as an elected official in another Wisconsin municipality and as such has served on numerous committees including Community Development and Housing Authority.

DANIEL S. GRUBB (12th A.D.) - appoint to the position of Business Representative. Mr. Grubb is a long-time employee of a large business in the planning area.

Recruitment will continue until the following positions are filled:

OPEN – Business representative

OPEN - Superior Street representative

Timeline

The first steering committee meeting will be planned for January 2014. The Mayoral appointed steering committee will meet-throughout 2014.

Project Website

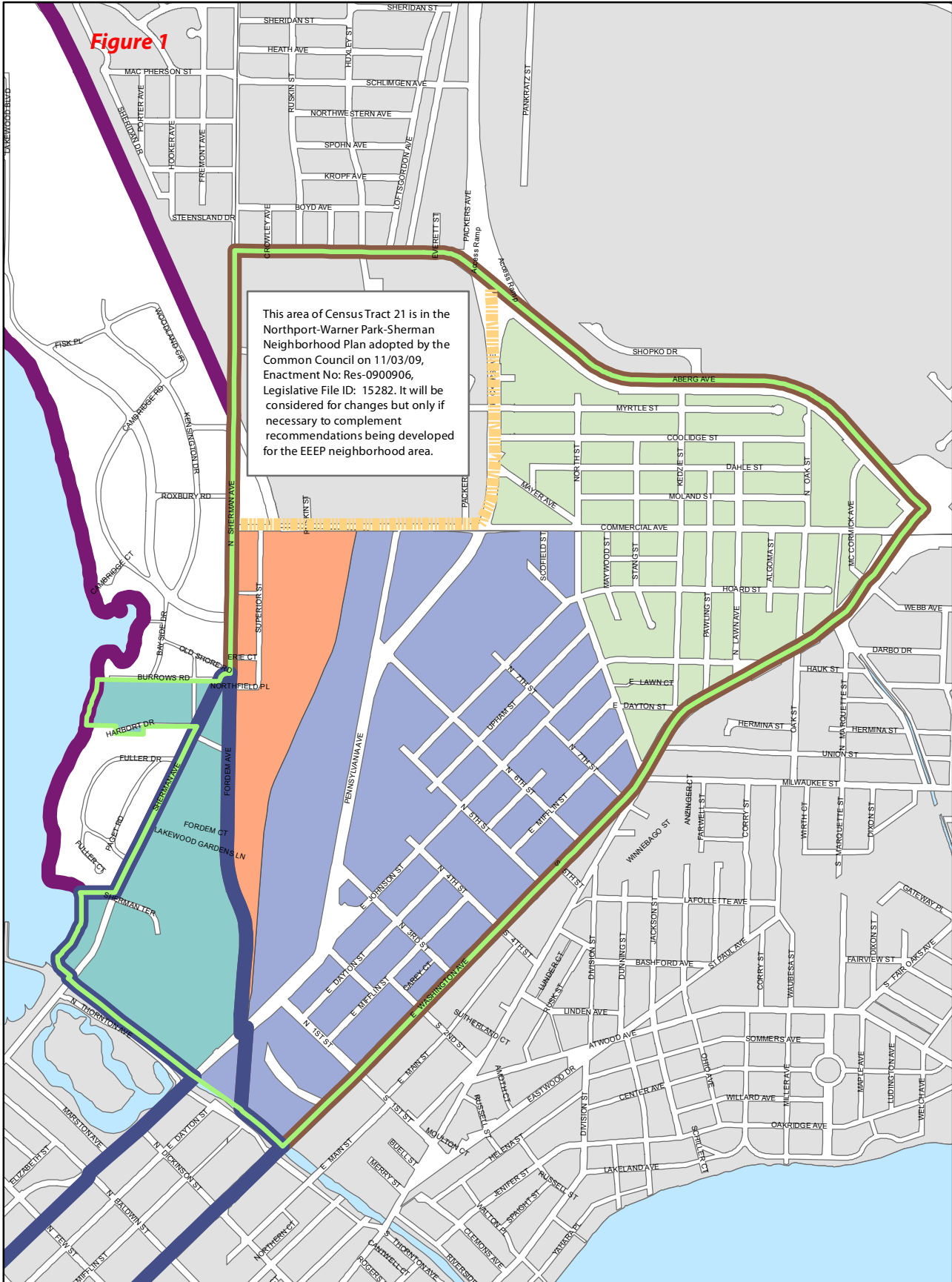
Additional information about the plan may be accessed by going to the neighborhood plan webpage: <http://www.cityofmadison.com/planning/eeep.html> , or by contacting Linda Horvath, Planning Division, 267-1131, lhovath@cityofmadison.com.

Cc: City of Madison Department of Planning & Community & Economic Development:
Steve Cover, Director
Katherine Cornwell, Planning Division Director
William Fruhling, Principal Planner
Jule Stroick, Neighborhood Planner
Mary Charnitz, Community Development Block Grant Division
Mike Miller, Community Development Block Grant Division

Attachment

Figure 1

This area of Census Tract 21 is in the Northport-Warner Park-Sherman Neighborhood Plan adopted by the Common Council on 11/03/09, Enactment No: Res-0900906, Legislative File ID: 15282. It will be considered for changes but only if necessary to complement recommendations being developed for the EEOP neighborhood area.



Emerson East - Eken Park - Yahara Neighborhood Plan

DRAFT

- Yahara Area
- Superior Street Area
- Eken Park Neighborhood
- Emerson East Neighborhood
- Census Tract 18.04
- Census Tract 21
- Census Tract 102
- Plan Area

