



City of Madison Water Utility SCADA Room

Madison, Wisconsin

Contract No. 0000, Project No. 00000

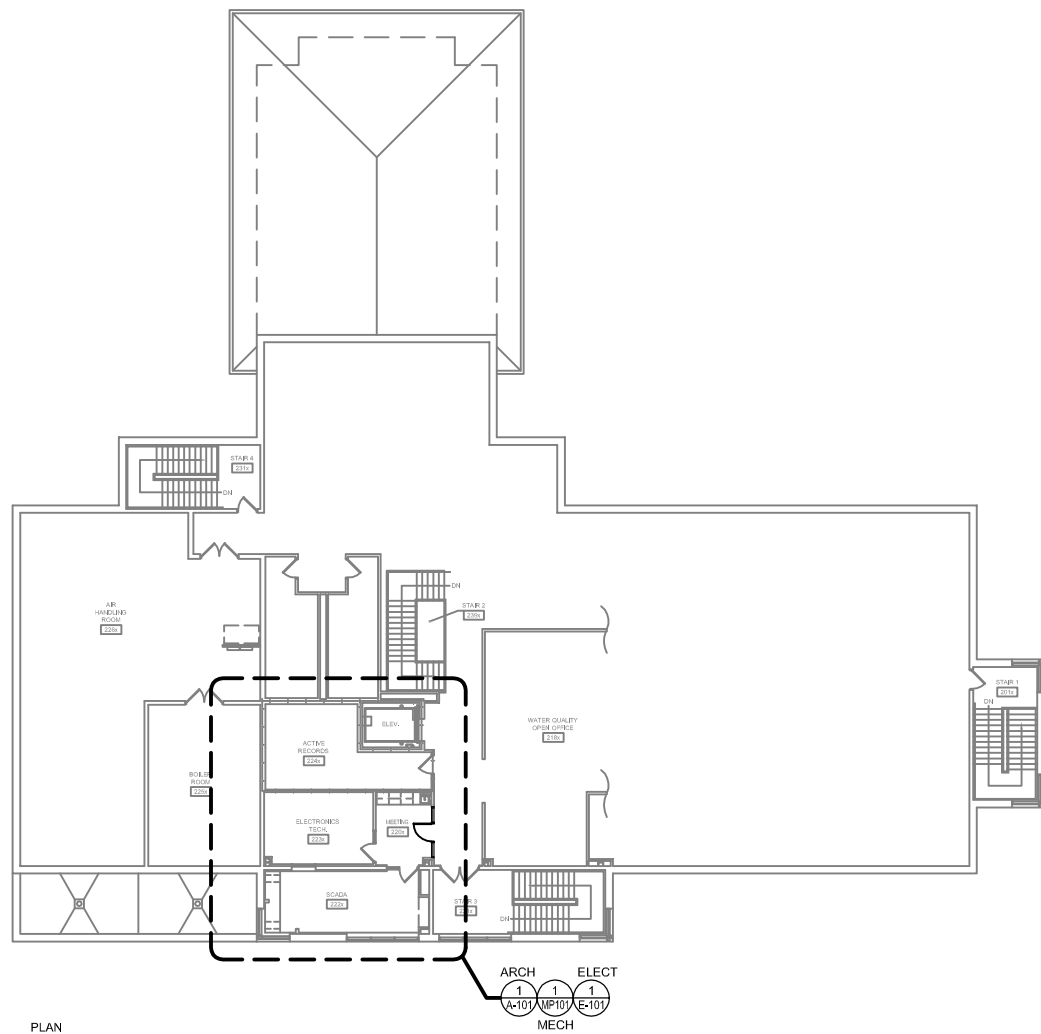
Mead & Hunt
2440 Deming Way
Middleton, WI 53562
phone: 608-273-6380
meadhunt.com

© Copyright 2015
This document, or any portion thereof, shall not be duplicated, disclosed, or used on any other project or extension of this project except by written agreement with Mead & Hunt, Inc. Mead & Hunt shall not be responsible for any unauthorized use of, or alteration to these documents.

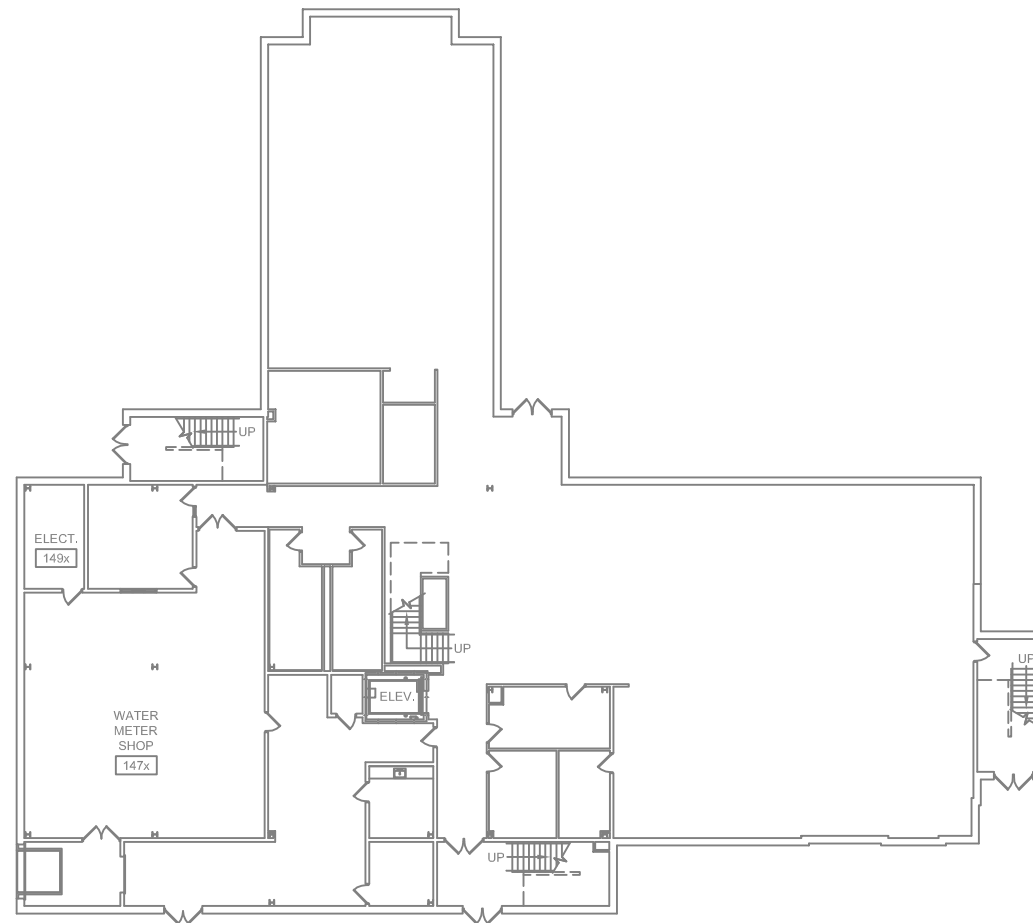


Sheet Index

GENERAL	
G-001	COVER SHEET
ARCHITECTURAL	
A-101	SECOND FLOOR PLAN
MECHANICAL	
MP101	MECHANICAL SECOND FLOOR PLANS



PLAN NORTH
2
OVERALL SECOND FLOOR PLAN
1/16" = 1'-0"



PLAN NORTH
1
OVERALL FIRST FLOOR PLAN
1/16" = 1'-0"



ARCHITECTURAL LEGEND:

- KEYED NOTES
- DOOR NUMBER
- DETAIL MARKER
- INTERIOR BUILDING ELEVATIONS
- SURFACE MOUNTED FIRE EXTINGUISHER
- RECESSED FIRE EXTINGUISHER CABINET w/ FIRE EXTINGUISHER.
- ROOM NAME AND NUMBER
- 1 HOUR RATED WALL ASSEMBLY

City of Madison Water Utility
SCADA Room

CLIENT ADDRESS
Madison, Wisconsin

ISSUED
X XXXXXX DESCRIPTION

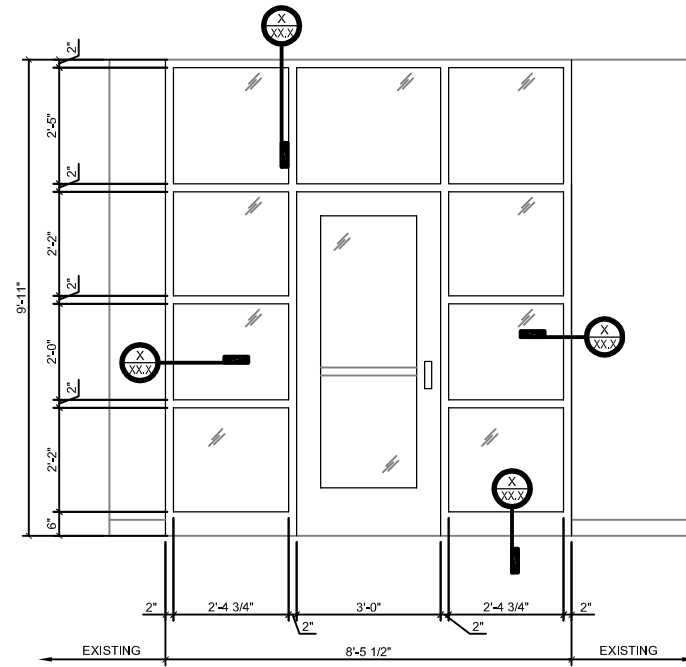
NOT FOR CONSTRUCTION

M&H NO: 3235300-131021.04
DATE: Jan. 03, 2016
DESIGNED BY: XXXX
DRAWN BY: XXXX
CHECKED BY: XXXX
DO NOT SCALE DRAWINGS

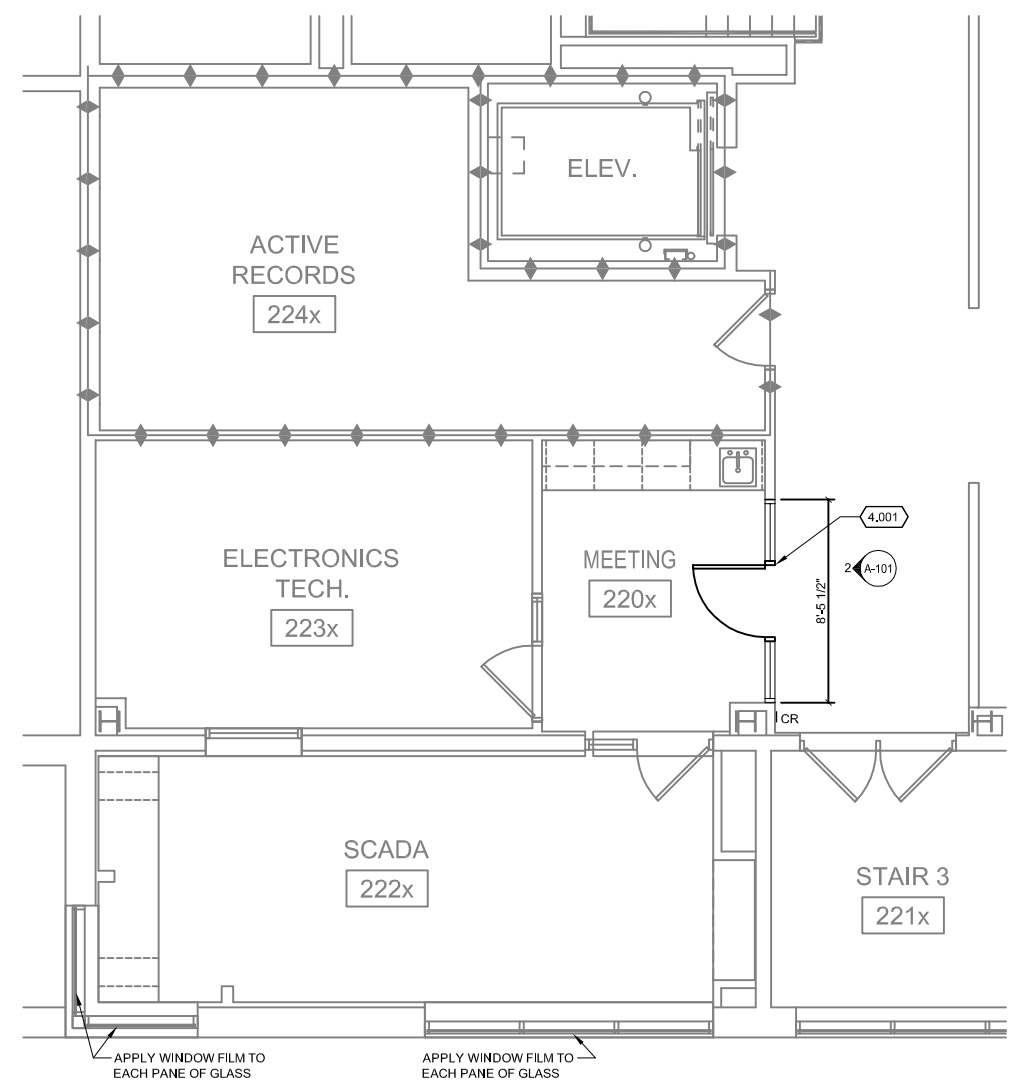
SHEET CONTENTS
COVER SHEET

SHEET NO.

G-001



2 INTERIOR ELEVATION
3/4" = 1'-0"



1 PARTIAL SECOND FLOOR PLAN
1/4" = 1'-0"
0 2' 4' 8'

FLOOR PLAN GENERAL NOTES:

1. FIELD VERIFY ALL DIMENSIONS. BRING ANY DISCREPANCIES TO THE ATTENTION OF THE ARCHITECT/ENGINEER FOR FINAL DECISION.
2. XXXXX

(X,XXX) FLOOR PLAN KEYED NOTES:

- 4.001 HOLLOW METAL DOOR AND FRAME

Mead & Hunt
2440 Deming Way
Middleton, WI 53562
phone: 608-273-6380
meadhunt.com

© Copyright 2015
This document, or any portion thereof, shall not be duplicated, disclosed, or used on any other project or extension of this project except by written agreement with Mead & Hunt, Inc. Mead & Hunt shall not be responsible for any unauthorized use of, or alteration to these documents.



City of Madison Water Utility
SCADA Room

Contract No. 0000, Project No. 00000
Madison, Wisconsin

ISSUED	X	XXXXXX	DESCRIPTION
--------	---	--------	-------------

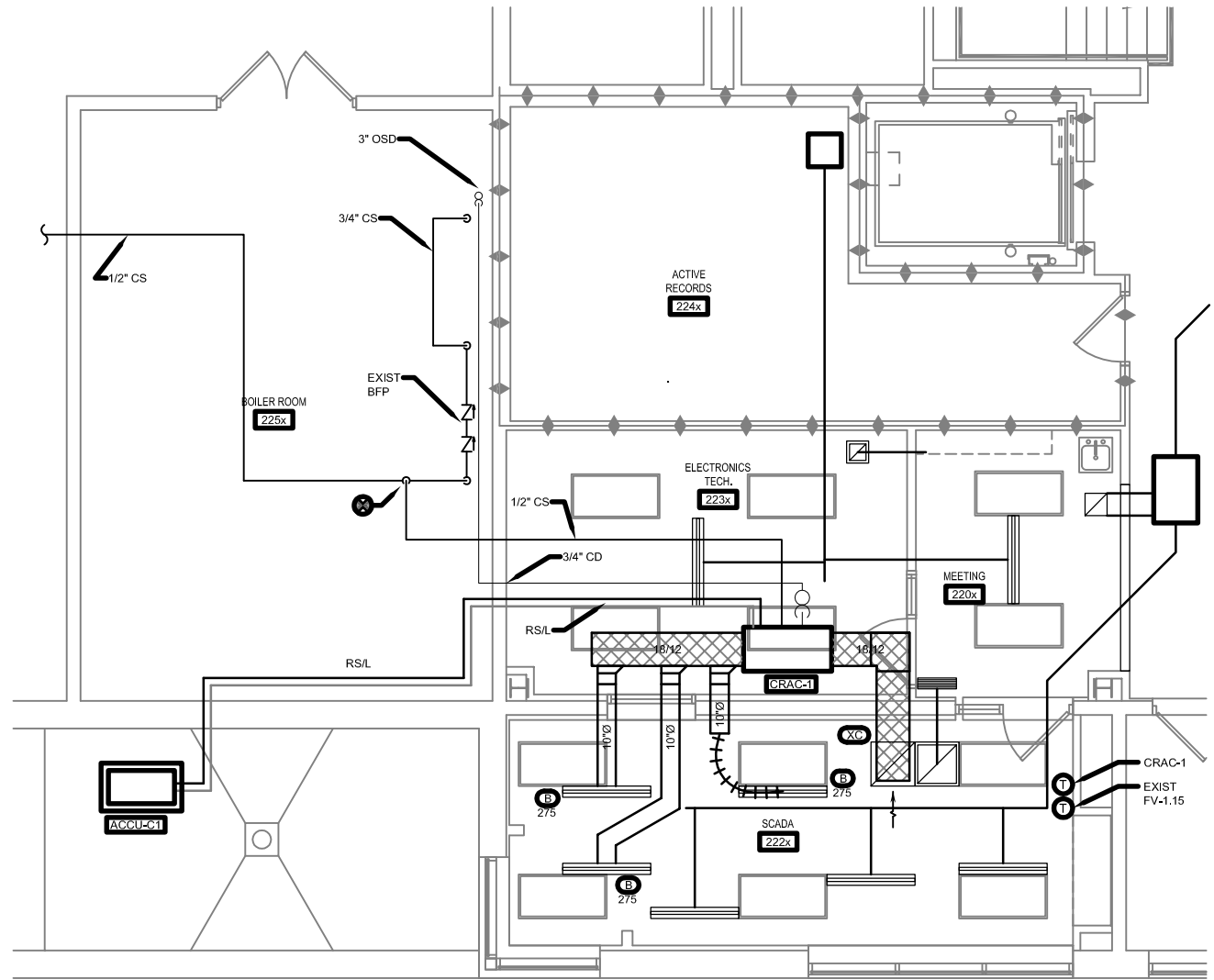
NOT FOR CONSTRUCTION

M&H No.: 3235300-131021.04
DATE: Jan. 00, 2016
DESIGNED BY: XXXX
DRAWN BY: XXXX
CHECKED BY: XXXX
DO NOT SCALE DRAWINGS

SHEET CONTENTS
SECOND FLOOR PLAN

SHEET NO.

A-101



PLAN NORTH
1 PARTIAL SECOND FLOOR PLAN
 1/4" = 1'-0"
 0 2' 4' 8'

AIR OUTLETS AND INLETS SCHEDULE														
MARK	MANUFACTURER, MODEL NUMBER	APPLICATION	OUTLET/INLET	TYPE	MOUNTING SYSTEM	DAMPER	SIZE (IN)	NECK (IN)	FINISH	MATERIAL	(1) MOUNTING HEIGHT	ACCESSORIES	LOCATION	REMARKS
B	DONCO DCD-2-1.5	SUPPLY	1	6	1	N	48	10	B	STEEL	CEILING	2 SLOT - 1-1/2"	SEE PLANS	300 CFM
XC	CARNES SPJB-22-4	RETURN	3	4	1	N	24x24	22x22	W	STEEL	CLG	24x24 LAY-IN PANEL	SCADA 222	800 CFM
			OUTLET/INLET	TYPE	MOUNTING SYSTEM			DAMPER			FINISH			
1	DIFFUSER	1 SINGLE DEFLECTION	8	EGGCRATE	1	T-BAR CEILING	N	NONE	M	MILL				
2	REGISTER	2 DOUBLE DEFLECTION	9	LOUVERED	2	PLASTER/CONCRETE CEILING	B	BUTTERFLY	W	MFR STANDARD WHITE				
3	GRILLE	3 FIXED BLADE	10	HOODED	3	PLASTER/MASONRY WALL	G	GRAVITY	B	BLACK				
4	LOUVER	4 PERFORATED	11	DOOR TRANSFER	4	EXPOSED DUCTWORK	MP	MOTORIZED-PNEUMATIC	O	OTHER	(SEE SPECIFICATIONS)			
5	PENTHOUSE	5 LINEAR	12	BRICK	5	METAL PANEL WALL	ME	MOTORIZED-ELECTRIC						
6	VENT	6 PLENUM SLOT	13	PUNKAH	6	ROOF	OB	OPPOSED BLADE						
7		7 DRUM	14	LAMINAR	7	EXTERIOR STUD WALL	PB	PARALLEL BLADE						
							LL	LOW-LEAKAGE, INSUL.						

REMARKS:
 (1) MOUNTING HEIGHT SHALL BE FROM FINISHED FLOOR TO BOTTOM OF OPENING.

AIR COOLED CONDENSING UNIT (ACCU) SCHEDULE																		
MARK	MANUFACTURER, MODEL NUMBER	NOM. CAP. (TONS)	MIN. EER	REFRIG. TYPE	SST (°F)	AMBIENT AIR TEMPERATURE		COMPRESSORS		ELECTRICAL				(2) MAX. SOUND (DBA)	MATCHING EQUIPMENT COOLING COIL	WEIGHT (LB)	LOCATION	REMARKS
						MIN. (°F)	MAX. (°F)	QTY.	TYPE	VOLTS	PHASE	FLA	MOPD					
ACCU-C1	LIEBERT, PFH 027A	2.0	11.0	R-407C	45	(-) 20	100	1	SCR	208	1	15.4	30	60	CRAC-1	150	GRADE	1,3,4

REMARKS:
 (1) MANUFACTURER SHALL SIZE REFRIGERANT PIPING, VALVES, AND ACCESSORIES FOR PROPER OPERATION OF SYSTEM.
 (2) PER ARI STANDARD "SOUND RATING OF LARGE OUTDOOR REFRIGERATING AND AIR-CONDITIONING EQUIPMENT".
 (3) PROVIDE LOW AMBIENT CONTROL KIT TO (-) 20 F.
 (4) PROVIDE CONC. PAD FOR GRADE MOUNTED CONDENSING UNITS.

COMPUTER ROOM AC UNIT (CRAC) SCHEDULE																					
MARK	MANUFACTURER, MODEL NUMBER	TYPE	SUPPLY AIRFLOW (CFM)	OUTSIDE AIRFLOW (CFM)	(2) E.S.P. (IN WC)	FAN MOTOR HP	COOLING CAPACITY				REFRIG. TYPE	REHEAT (KW)	HUMIDIFIER (LB/HR)	ELECTRICAL				ACCESSORIES	WEIGHT (LBS)	LOCATION	REMARKS
							EAT	CAPACITY (MBH)	SENS.	TYPE				VOLTS	PHASE	FLA	OPD				
CRAC-1	LIEBERT, MMD 24E	H D	800	0	0.3	1/4	80	62	22.9	22.2	R-407C	4.7	4.3	208	1	34.2	45	1,2,3,4,5	250	SCADA 222	1

REMARKS:
 (1) SEE SPECIFICATION SECTION 23 8123 FOR ANY ADDITIONAL ACCESSORIES
 (2) DOES NOT INCLUDE PRESSURE DROP FOR INTERNAL COMPONENTS

FLOOR PLAN GENERAL NOTES:

- FIELD VERIFY ALL DIMENSIONS, BRING ANY DISCREPANCIES TO THE ATTENTION OF THE ARCHITECT/ENGINEER FOR FINAL DECISION.
- XXXXX

(X.XXX) FLOOR PLAN KEYED NOTES:

- 8.001 XXXXX
- 8.002 XXXXXX
- 8.003 XXXXXX

ISSUED
 X XXXXXX DESCRIPTION

NOT FOR CONSTRUCTION

M&H No.: 3235300-131021.04
 DATE: Jan. 00, 2016
 DESIGNED BY: XXXX
 DRAWN BY: XXXX
 CHECKED BY: XXXX
 DO NOT SCALE DRAWINGS

SHEET CONTENTS
 MECHANICAL SECOND FLOOR PLANS

SHEET NO.

MP101