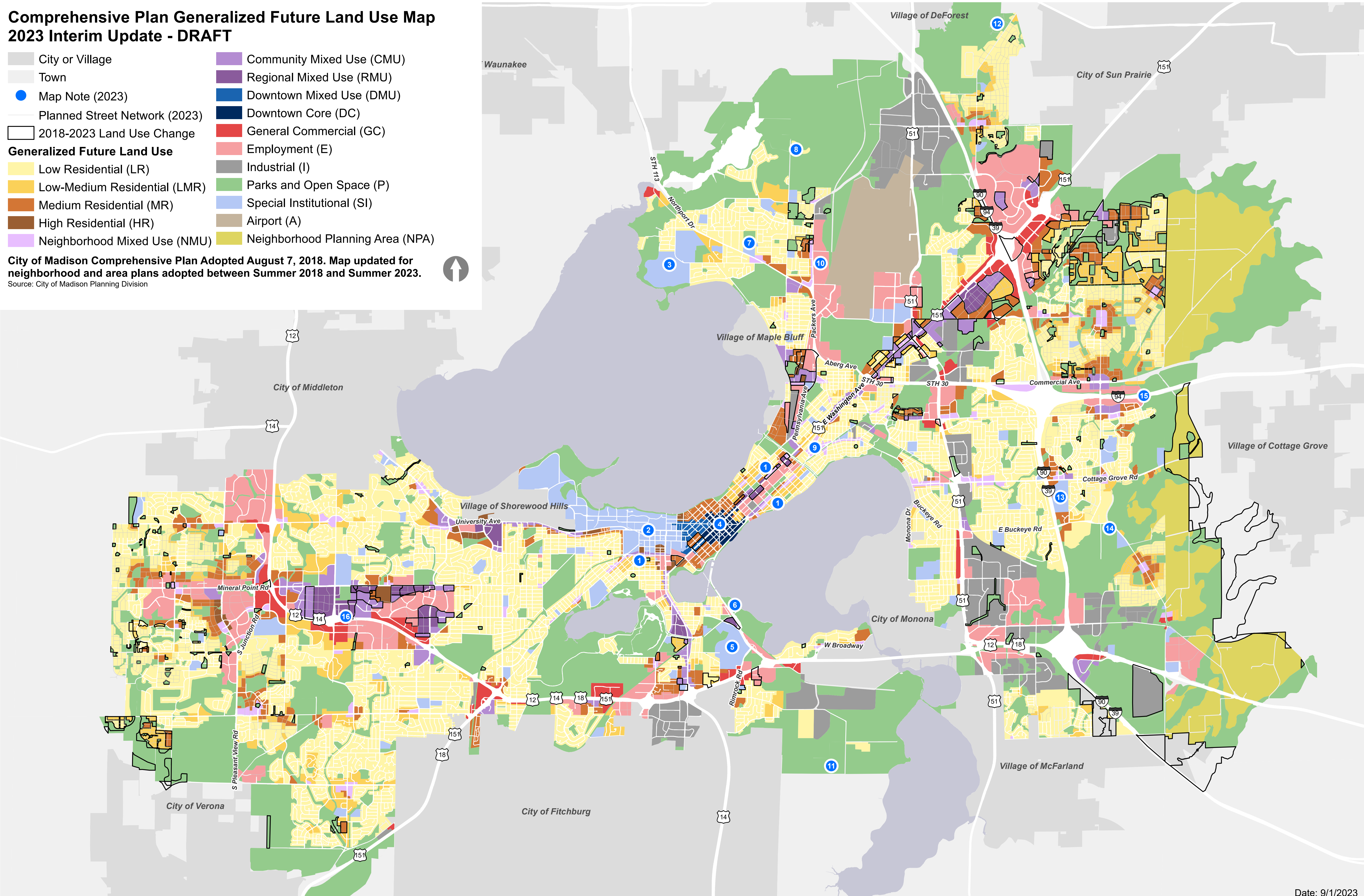


Comprehensive Plan Generalized Future Land Use Map 2023 Interim Update - DRAFT

- Generalized Future Land Use**

 - City or Village
 - Town
 - Map Note (2023)
 - Planned Street Network (2023)
 - 2018-2023 Land Use Change
 - Low Residential (LR)
 - Low-Medium Residential (LMR)
 - Medium Residential (MR)
 - High Residential (HR)
 - Neighborhood Mixed Use (NMU)
 - Community Mixed Use (CMU)
 - Regional Mixed Use (RMU)
 - Downtown Mixed Use (DMU)
 - Downtown Core (DC)
 - General Commercial (GC)
 - Employment (E)
 - Industrial (I)
 - Parks and Open Space (P)
 - Special Institutional (SI)
 - Airport (A)
 - Neighborhood Planning Area (NPA)

City of Madison Comprehensive Plan Adopted August 7, 2018. Map updated for neighborhood and area plans adopted between Summer 2018 and Summer 2023.
Source: City of Madison Planning Division



Adopted or In-Progress Plans Since 2018

2018-2023 Adopted or In-Progress Plans

Planned Street Network (2023)

City or Village

Town

Regional Mixed Use (RMU)

Downtown Mixed Use (DMU)

Downtown Core (DC)

General Commercial (GC)

Employment (E)

Industrial (I)

Parks and Open Space (P)

Special Institutional (SI)

Airport (A)

Neighborhood Planning Area (NPA)

Generalized Future Land Use*

Low Residential (LR)

Low-Medium Residential (LMR)

Medium Residential (MR)

High Residential (HR)

Neighborhood Mixed Use (NMU)

Community Mixed Use (CMU)

* For detailed plans and boundaries visit the Plans page; for a detailed Generalized Future Land Use map visit the interactive GFLU map page.
Note: This map includes GFLU edits from adopted 2018-2023 plans and the Reiner Neighborhood Development Plan.
Source: City of Madison Planning Division
April 18, 2023

0

1

2

Miles

