

**APPLICATION FOR
URBAN DESIGN COMMISSION
REVIEW AND APPROVAL**

**AGENDA ITEM # _____
Project # _____
Legistar # _____**

DATE SUBMITTED: <u>2013-07-17</u>	Action Requested
UDC MEETING DATE: <u>2013-07-24</u>	<input type="checkbox"/> Informational Presentation
	<input type="checkbox"/> Initial Approval and/or Recommendation
	<input checked="" type="checkbox"/> Final Approval and/or Recommendation

PLEASE PRINT!

PLEASE PRINT!

PROJECT ADDRESS: 1750 Pearson Street

ALDERMANIC DISTRICT: 12

OWNER/DEVELOPER (Partners and/or Principals) ARCHITECT/DESIGNER/OR AGENT:
Madison College JSD Professional Services, Inc.

CONTACT PERSON: Justin Frahm / Wade Wyse
Address: JSD Professional Services, Inc.
161 Horizon Drive Suite 101
Phone: 848-5060
Fax: 848-2255
E-mail address: wade.wyse@jsdinc.com

TYPE OF PROJECT:
(See Section A for:)

- Planned Unit Development (PUD)
 - General Development Plan (GDP)
 - Specific Implementation Plan (SIP)
- Planned Community Development (PCD)
 - General Development Plan (GDP)
 - Specific Implementation Plan (SIP)
- Planned Residential Development (PRD)
- New Construction or Exterior Remodeling in an Urban Design District * (A public hearing is required as well as a fee)
- School, Public Building or Space (Fee may be required)
- New Construction or Addition to or Remodeling of a Retail, Hotel or Motel Building Exceeding 40,000 Sq. Ft.
- Planned Commercial Site

(See Section B for:)

- New Construction or Exterior Remodeling in C4 District (Fee required)

(See Section C for:)

- R.P.S.M. Parking Variance (Fee required)

(See Section D for:)

- Comprehensive Design Review* (Fee required)
- Street Graphics Variance* (Fee required)
- Other _____

*Public Hearing Required (Submission Deadline 3 Weeks in Advance of Meeting Date)

Where fees are required (as noted above) they apply with the first submittal for either initial or final approval of a project.

July 17, 2013

City of Madison Urban Design Commission
c/o Al Martin
City of Madison Planning Division
PO Box 2985
Madison, WI 53701-2985

Subject: **Madison College Fire Training Facility**

Dear Commissioners:

Madison College (College) is proposing to construct an outdoor Fire Training Facility at the College's Truax campus in Madison, Wisconsin. The facility will be located on land directly west of Pearson Street and north of Anderson Street at the west end of the campus. This land is directly adjacent to the Dane County Regional Airport (Airport). The space will consist of a series of props to be used for outdoor fire training and certification.

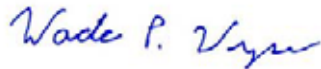
Due to ongoing lease negotiations with the Airport, the College has determined it would be easier to construct the project in 2 phases. The first phase will develop the 2.135 acre site to the north currently leased by the College. The second phase, the 2.517 acre site to the south, will be developed once the lease is finalized with the Airport. This 2-phase approach will allow the College the ability to start this project in September/October, 2013. Phase 2 would be developed in spring, 2014. Madison College is seeking approval for the construction of both Phases 1 and 2 at this time.

The new outdoor Fire Training Facility will consist of a series of props including a residential and commercial burn tower, ladder tower, vertical vent prop, gas vehicle vent prop, gas control valves, pallet shed, gas commercial dumpster, natural gas prop, car extrication prop, water tank, confined space prop, LP gas prop, and gas extinguisher prop.

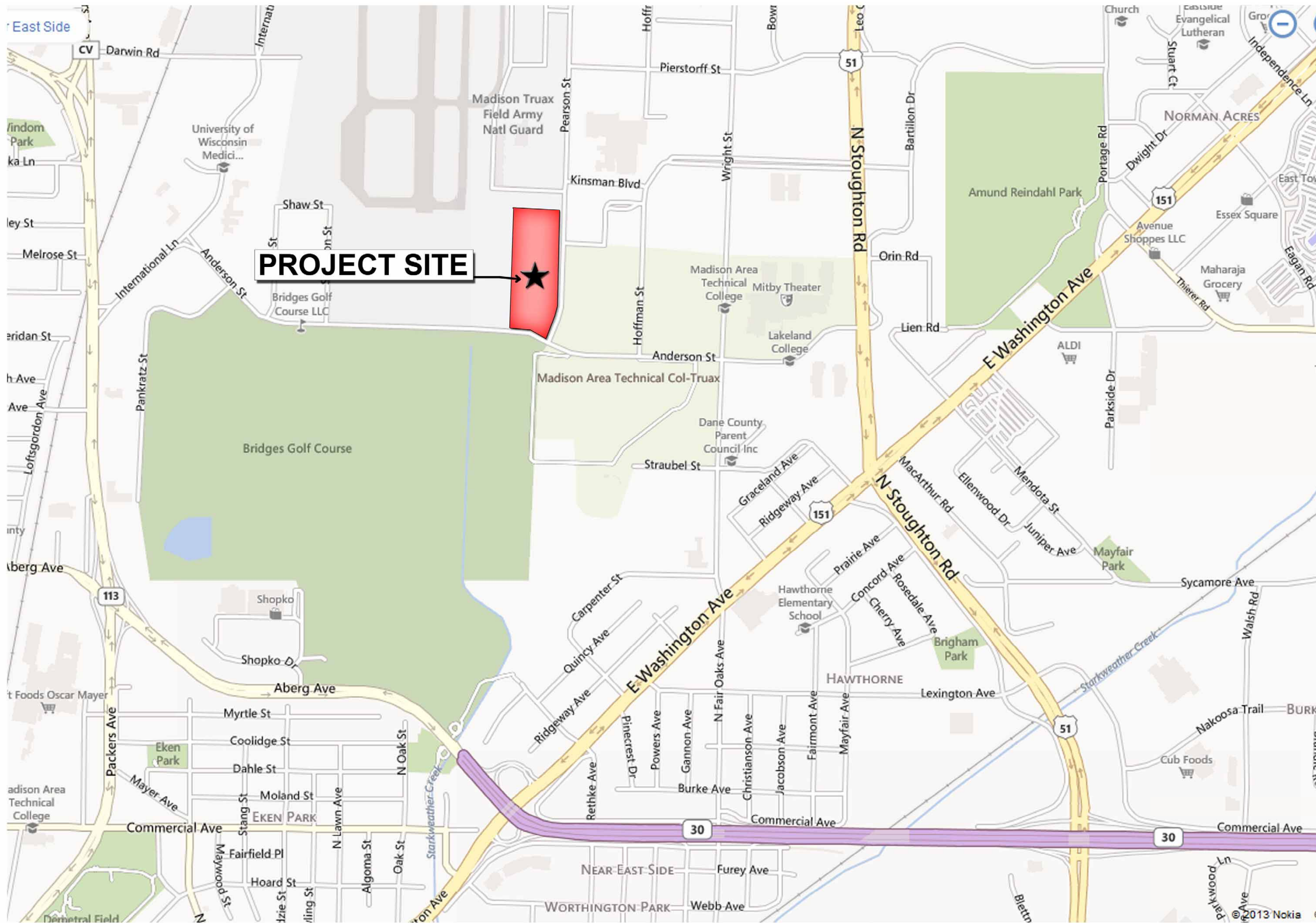
Please find enclosed Application Materials addressing comments and concerns provided at the June 19th UDC meeting. We look forward to our continued coordination efforts for successful implementation of the Fire Training Facility.

Sincerely,

JSD Professional Services, Inc.

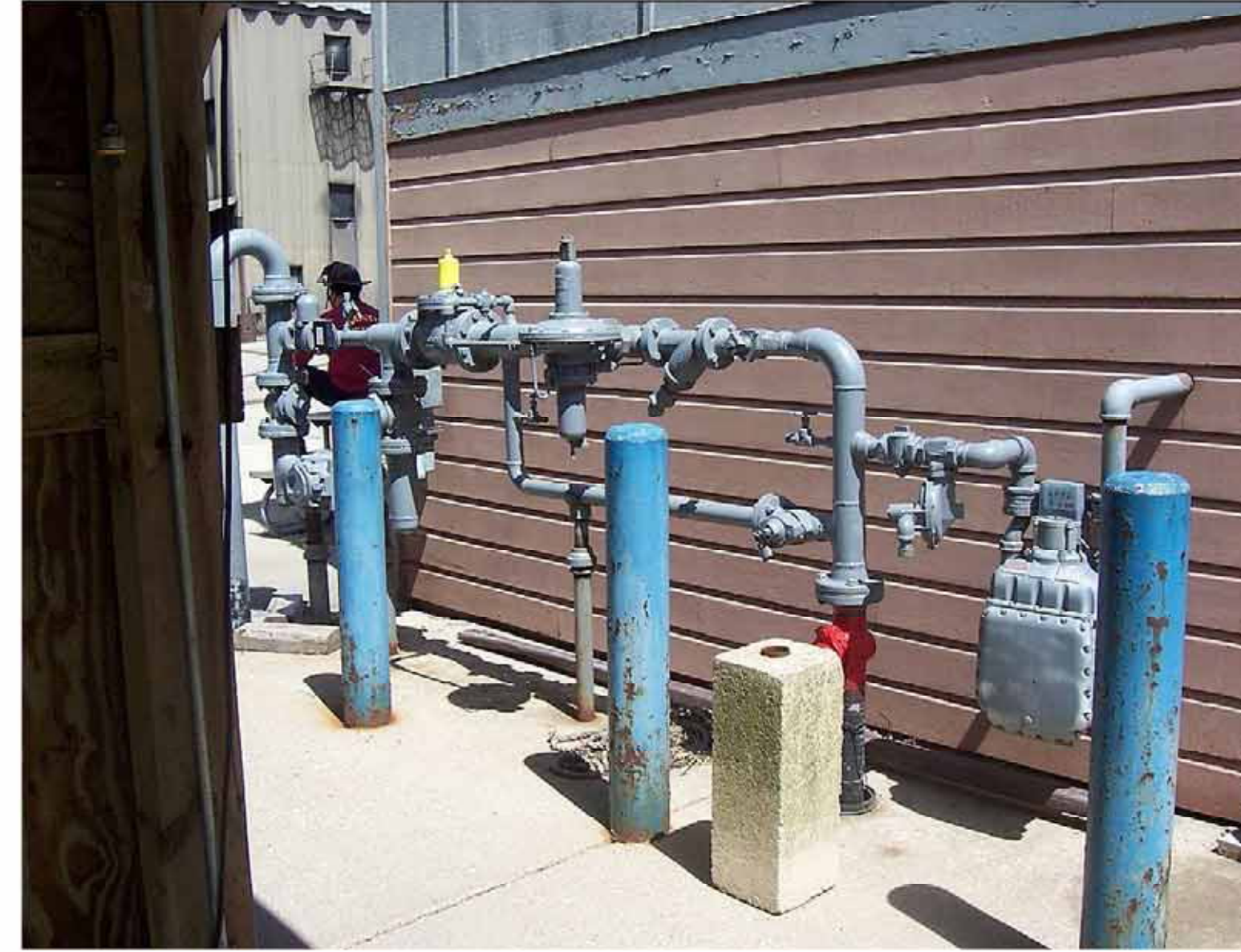


Wade P. Wyse, P.E.
Senior Project Engineer



**FIRE TRAINING FACILITY
LOCATOR MAP**

MADISON, WI
06/05/2013
FOR PLANNING PURPOSES ONLY







Madison College Truax Site Utilities

Exterior Lighting Submittal

Specification Section 26 56 00

SUBMITTAL NO. 26 56 00-001

THIS DOCUMENT REVIEWED BY
J.H. FINDORFF & SON INC.
THE REVIEW OF THIS DOCUMENT IS FOR GENERAL
CONFORMANCE WITH THE CONTRACT DOCUMENTS ONLY
AND IN NO WAY RELIEVES THE SUB-CONTRACTOR OR
SUPPLIER OF HIS RESPONSIBILITY TO FURNISH SPECIFIED
MATERIALS AS REQUIRED TO COMPLETE THE CONTRACT
WORK. UNLESS NOTED OTHERWISE, FIELD DIMENSIONS
HAVE NOT BEEN VERIFIED AND ARE THE RESPONSIBILITY
OF THE SUB-CONTRACTOR OR SUPPLIER.

REVIEWED BY ny DATE 5-21-12



Lighting Submittals
MATC Site Utilities

Submitted By:
Forward Electric

In Partnership With:
Werner Electric Supply Company

SUBMITTAL INDEX

MATC SITE UTILITES

TYPE	MANUFACTURER	CATALOG NUMBER	LAMPS
		<u>PARKING LOT LIGHTS</u>	LED
S1	CREE	ARE-EDG-3MB-DA-08-D-UL-350-BK-43K single head	
S1	HAPCO	RSA20C5-4-BA-GFI	
S2,S3	CREE	ARE-EDG-4M-DA-08-D-UL-350-BK-43K single head	LED
S2,S3	HAPCO	RSA20C5-4-BA-GFI	
		<u>PEDESTRIAN LIGHTS</u>	
S4	HYDREL	TLPRO152 108LED 350MA 41K R4 120 PT4 14H 4C DDB	LED
S4GFI	HYDREL	TLPRO152 108LED 350MA 41K R4 120 PT4 14H 4C DDB WITH GFI PROVISION	LED
S4A	HYDREL	TLPRO152 108LED 350MA 41K R5 120 PT4 14H 4C DDB	LED
S4AGFI	HYDREL	TLPRO152 108LED 350MA 41K R5 120 PT4 14H 4C DDB WITH GFI PROVISION	LED
S5	BEGA	8554LED CTBS	LED
		<u>FLOOD LIGHTS</u>	
S6	GARDCO	DFL7J HSP 75LA NW UNIV BRP	LED
S6A	GARDCO	DFL7ST HSP 75LA NW UNIV BRP	LED
		<u>FOUNTAIN LIGHTING</u>	
S7/S8A/S8B/S8C	CRYSTAL	LOT CYRSTAL BOM CONSISTING OF: LEDC052P 12V/30WATT LIGHT FIXTURE 11 IN GUARD F ELCORD160L20 18/5 STW CABLE 20FT FOR LED160 SERIES LED160004 RGB RING LIGHT, SLAB MOUNTED ELCORD160L20 18/5 STW CABLE 20FT FOR LED160 SERIES LEDPS503 12V 12 LIGHT POWER SUPPLY LEDPS250 12V 6 LIGHT POWER SUPPLY LEDQUE1 DMX STORAGE AND PLAYBACK UNIT IPLAY3 EBJ208A101 JUNCTION BOX FACTORY-DRILLED EBJ204A101 JUNCTION BOX FACTORY-DRILLED EGS053 CORD SEAL #18/5 CABLE PLASTIC	LED
		<u>LED STRIP LIGHTING</u>	
S9	TIVOFLEX	TVFP-WW-24-14'	LED
S9	TIVOFLEX	TVFP-EPA-24-180 END PREP W/5' 180 DEGREE	
S9	TIVOFLEX	TVFP-NOTCH*-6.5 6' 5" NOTCHED CHANNEL Line Note: *-V for vertical, H for horizontal	
S9	TIVOFLEX	MT-100-1-4-24-D	
S9	TIVOFLEX	TVFM-END CAP	
		<u>BUILDING UPLIGHTS</u>	
S10	BK LTG	AR-LED-TR-E23-NSP-A9-BZP-12-11-A-12-277-PP	LED
S11	COLOR	523 000036 01/120 000103 02 w/ 120 000080 02 Confirm color	LED
S12	COLOR	523 000036 01/120 000103 02 w/ 120 000080 00 Confirm color	LED



PARKING LOT LIGHTS

TYPE: S1

CREE / HAPCO

ARE-EDG-3MB-DA-08-D-UL-350-BK-43K single head

RSA20C5-4-BA-GFI

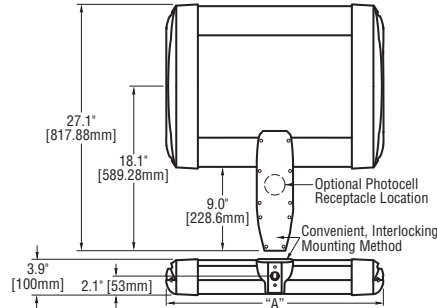


ARE-EDG-3M-DA THE EDGE® LED Area Light – Type III Medium

Rev. Date: 8/23/11



Notes:



# of LEDs	Dim. "A"
20	12.06" [306mm]
40	12.06" [306mm]
60	14.06" [357mm]
80	16.06" [408mm]
100	18.06" [459mm]
120	20.06" [510mm]
140	22.06" [560mm]
160	24.06" [611mm]
200	28.06" [713mm]
240	32.06" [814mm]

Product	Family	Optic	Mounting	# of LEDs (x 10)	LED Series	Voltage	Color Options	Drive Current	Factory-Installed Options
ARE	EDG	3M ¹ 3MB ²	DA ³	02 04 06 08 10 12 14 16 20 24	D	UL Universal 120-277V UH Universal 347-480V 34 347V	SV Silver BK Black BZ Bronze PB Platinum Bronze WH White	350 350mA 525 ⁴ 525mA 700 ⁵ 700mA	43K 4300K Color Temperature ⁶ DIM 0-10V Dimming ^{8,9} F Fuse ^{10,11,12} HL Hi/Low (175/350/525, dual circuit input) ¹³ P Photocell ^{12,14} R NEMA Photocell Receptacle ^{12,15,16} ML Multi-Level (75/525) ¹³

Footnotes

- IESNA Type III Medium distribution
- IESNA Type III Medium distribution w/ backlight control
- Direct mounting arm for use with 3-6" (76-152mm) square or round pole
- Available on fixtures with 20-160 LEDs
- Available on fixtures with 20-60 LEDs
- Color temperature per fixture; 6000K standard; minimum 70 CRI
- Control by others
- Refer to dimming spec sheet for availability and additional information
- Not available when UH voltage is selected
- When code dictates fusing use time delay fuse
- Not available with all multi-level options. Refer to the multi-level spec sheet for availability and additional information
- Refer to multi-level spec sheet for availability and additional information
- Must specify voltage other than UH
- Intended for horizontal mounting
- Photocell by others

LED PERFORMANCE SPECS

# of LEDs	Initial Delivered Lumens – Type III Medium @ 6000K	B U G			Initial Delivered Lumens – Type III Medium w/ backlight control @ 6000K	B U G			Initial Delivered Lumens – Type III Medium @ 4300K	B U G			System Watts 120-480V	Total Current @ 120V	Total Current @ 240V	Total Current @ 277V	Total Current @ 347	Total Current @ 480V	L ₇₀ Hours @ 25° C (77° F)	50K Hours Maintenance Factor* @ 15° C (59° F)				
		Rating**	Rating**	Rating**		Rating**	Rating**	Rating**																
350mA Fixture Operating at 25° C (77° F)																								
20	1,814 (02)	1	1	1	1,342 (02)	0	1	1	1,672 (02)	1	1	1	1,237 (02)	0	1	1	26	0.20	0.11	0.10	0.09	0.07	>150,000	93%
40	3,628 (04)	1	1	1	2,683 (04)	1	1	1	3,343 (04)	1	1	1	2,473 (04)	0	1	1	47	0.40	0.21	0.19	0.15	0.12	>150,000	
60	5,371 (06)	2	2	2	3,973 (06)	1	2	1	4,950 (06)	2	2	2	3,662 (06)	1	2	1	68	0.58	0.30	0.26	0.20	0.16	>150,000	
80	7,161 (08)	2	2	2	5,298 (08)	1	2	2	6,600 (08)	2	2	2	4,882 (08)	1	2	1	90	0.77	0.38	0.34	0.26	0.20	>150,000	
100	8,929 (10)	3	3	3	6,605 (10)	1	3	2	8,230 (10)	2	2	2	6,088 (10)	1	2	2	111	0.95	0.47	0.42	0.32	0.24	>150,000	
120	10,715 (12)	3	3	3	7,926 (12)	1	3	2	9,876 (12)	3	3	3	7,305 (12)	1	3	2	132	1.15	0.56	0.50	0.38	0.28	>150,000	
140	12,444 (14)	3	3	3	9,205 (14)	1	3	2	11,469 (14)	3	3	3	8,484 (14)	1	3	2	157	1.34	0.67	0.61	0.47	0.35	149,000	
160	14,222 (16)	3	3	3	10,520 (16)	1	3	2	13,108 (16)	3	3	3	9,696 (16)	1	3	2	179	1.54	0.76	0.68	0.53	0.39	149,000	
200	17,778 (20)	3	3	3	13,151 (20)	2	3	3	16,385 (20)	3	3	3	12,120 (20)	1	3	2	221	1.92	0.95	0.84	0.65	0.48	149,000	
240	21,333 (24)	3	3	3	15,781 (22)	2	3	3	19,662 (24)	3	3	3	14,544 (24)	2	3	3	264	2.30	1.12	1.00	0.77	0.56	149,000	
525mA Fixture Operating at 25° C (77° F)																								
20	2,539 (02)	1	1	1	1,878 (02)	0	1	1	2,340 (02)	1	1	1	1,731 (02)	0	1	1	37	0.31	0.17	0.16	0.12	0.10	136,000	92%
40	5,079 (04)	2	2	2	3,757 (04)	1	2	1	4,681 (04)	2	2	2	3,462 (04)	1	2	1	70	0.57	0.29	0.26	0.21	0.16	136,000	
60	7,520 (06)	2	2	2	5,562 (06)	1	2	2	6,930 (06)	2	2	2	5,127 (06)	1	2	1	102	0.87	0.44	0.39	0.30	0.22	129,000	
80	10,026 (08)	3	3	3	7,417 (08)	1	3	2	9,240 (08)	3	3	3	6,835 (08)	1	3	2	133	1.14	0.56	0.49	0.39	0.29	129,000	
100	12,501 (10)	3	3	3	9,247 (10)	1	3	2	11,521 (10)	3	3	3	8,523 (10)	1	3	2	172	1.47	0.75	0.67	0.51	0.38	128,000	
120	15,001 (12)	3	3	3	11,097 (12)	1	3	2	13,826 (12)	3	3	3	10,227 (12)	1	3	2	204	1.76	0.88	0.78	0.60	0.44	128,000	
140	17,422 (14)	3	3	3	12,888 (14)	2	3	2	16,057 (14)	3	3	3	11,878 (14)	1	3	2	233	2.01	0.99	0.87	0.69	0.51	123,000	
160	19,911 (16)	3	3	3	14,729 (16)	2	3	2	18,351 (16)	3	3	3	13,575 (16)	2	3	3	265	2.29	1.11	0.98	0.78	0.57	123,000	
700mA Fixture Operating at 25° C (77° F)																								
20	3,102 (02)	1	1	1	2,281 (02)	0	1	1	2,858 (02)	1	1	1	2,102 (02)	0	1	1	50	0.42	0.22	0.20	0.15	0.12	111,000	90%
40	6,203 (04)	2	2	2	4,562 (04)	1	2	1	5,717 (04)	2	2	2	4,204 (04)	1	2	1	93	0.79	0.40	0.35	0.27	0.20	111,000	
60	9,185 (06)	3	3	3	6,754 (06)	1	3	2	8,465 (06)	2	3	2	6,225 (06)	1	2	2	137	1.18	0.59	0.51	0.39	0.29	111,000	

* For recommended lumen maintenance factor data see TD-13

** For more information on the IES BUG (Backlight-Uplight-Glare) Rating visit www.iesna.org/PDF/Erratas/TM-15-07BugRatingsAddendum.pdf

NOTE: All data subject to change without notice.

© 2011 BetaLED®, a division of Ruud Lighting • 1200 92nd Street • Sturtevant, WI 53177 • 800-236-6800 • www.betaLED.com



Made in the U.S.A. of U.S. and imported parts.
Meets Buy American requirements within the ARRA.





ARE-EDG-3M-DA THE EDGE® LED Area Light – Type III Medium

Rev. Date: 8/23/11

General Description

Slim, low profile design minimizes wind load requirements. Fixture sides are rugged cast aluminum with integral, weather-tight LED driver compartments and high performance aluminum heatsinks. Convenient, interlocking mounting method. Mounting housing is rugged die cast aluminum and mounts to 3–6" (76–152mm) square or round pole. Fixture is secured by two (2) 5/16-18 UNC bolts spaced on 2" (51mm) centers. Includes leaf/debris guard. Five year limited warranty on fixture.

Electrical

Modular design accommodates varied lighting output from high power, white, 6000K (+/- 500K per full fixture), minimum 70 CRI, long life LED sources. Optional 4300K (+/- 300K per full fixture) also available. 120–277V 50/60 Hz, Class 1 LED drivers are standard. 347–480V 50/60 Hz driver is optional. LED drivers have power factor >90% and THD <20% at full load. Units provided with integral 10kV surge suppression protection standard. Integral weather-tight electrical box with terminal strips (12Ga - 20Ga) for easy power hook-up. Surge protection tested in accordance with IEEE/ANSI C62.41.2.

Testing & Compliance

UL listed in the U.S. and Canada for wet locations and enclosure rated IP66 per IEC 60529 when ordered without P or R options. Consult factory for CE Certified products. Certified to ANSI C136.31-2001, 3G bridge and overpass vibration standards. Dark Sky Friendly. IDA Approved. RoHS Compliant.



Product qualified on the Design Lights Consortium ("DLC") Qualified Products List ("QPL") when ordered without backlight control shield.

Finish

Exclusive Colorfast DeltaGuard® finish features an E-Coat epoxy primer with an ultra-durable silver powder topcoat, providing excellent resistance to corrosion, ultraviolet degradation and abrasion. Bronze, black, white and platinum bronze powder topcoats are also available. The finish is covered by our 10 year limited warranty.

Fixture and finish are endurance tested to withstand 5,000 hours of elevated ambient salt fog conditions as defined in ASTM Standard B 117.

Patents

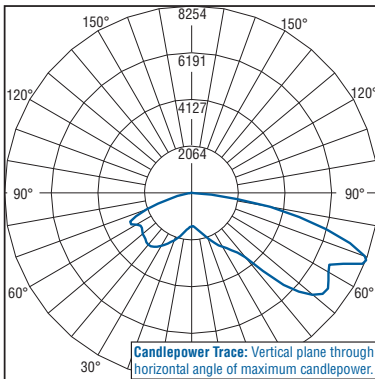
U.S. and international patents granted and pending. BetaLED is a division of Ruud Lighting, Inc. For a listing of Ruud Lighting, Inc. patents, visit www.uspto.gov.

Field-Installed Accessories

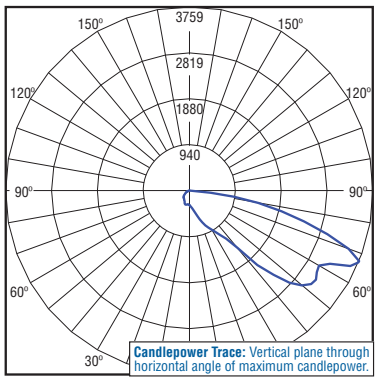


Bird Spikes
XA-BRDSPK

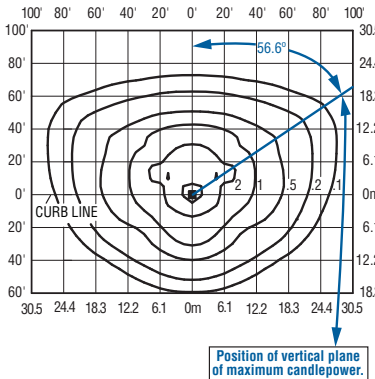
Photometrics



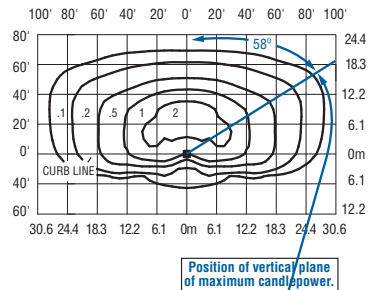
Independent Testing Laboratories certified test. Report No. ITL67871. Candlepower trace of 4300K, 160 LED Type III Medium area luminaire with 18,862 initial delivered lumens operating at 525mA. All published luminaire photometric testing performed to IESNA LM-79-08 standards.



Independent Testing Laboratories certified test. Report No. ITL68539. Candlepower trace of 4300K, 40 LED Type III Medium w/ backlight control area luminaire with 5,084 initial delivered lumens operating at 525mA. All published luminaire photometric testing performed to IESNA LM-79-08 standards.



Isofootcandle plot of 4300K, 120 LED Type III Medium area luminaire at 25' (7.6m) A.F.G. Luminaire with 13,826 initial delivered lumens operating at 525mA. Initial FC at grade.



Isofootcandle plot of 4300K, 120 LED Type III Medium area luminaire at 25' (7.6m) A.F.G. Luminaire with 10,227 initial delivered lumens operating at 525mA. Initial FC at grade.

THE EDGE® EPA & Weight Calculations

# of LEDs	Approximate Weight 120–480V ¹	EPA			
		Single	2@ 180°	2@ 90°	3@ 90°
		■	■	■	■
		■	■	■	■
		■	■	■	■
		■	■	■	■
		■	■	■	■
Fixed Arm Mount					
20	21.0 lbs. (9.5kg)	0.60	1.20	0.87	1.47
40	23.7 lbs. (10.8g)	0.60	1.20	0.87	1.47
60	27.0 lbs. (12.3kg)	0.60	1.20	0.92	1.51
80	28.1 lbs. (12.8kg)	0.60	1.20	0.96	1.55
100	32.3 lbs. (14.7kg)	0.60	1.20	1.00	1.60
120	33.5 lbs. (15.2kg)	0.60	1.20	1.04	1.64
140	36.9 lbs. (16.7kg)	0.60	1.20	1.08	1.68
160	41.4 lbs. (18.8kg)	0.60	1.20	1.12	1.72
200	43.3 lbs. (19.6kg)	0.61	1.21	n/a ²	n/a ²
240	47.8 lbs. (21.7kg)	0.69	1.38	n/a ²	n/a ²

1. Add 5 lbs. (2.3kg) for transformer in 347–480V fixtures when multi-level options are selected.
2. For applications requiring 200 or more LEDs at 90 degrees refer to the DL mount version of our spec sheet.

NOTE: All data subject to change without notice.

© 2011 BetaLED®, a division of Ruud Lighting • 1200 92nd Street • Sturtevant, WI 53177 • 800-236-6800 • www.betaLED.com



Made in the U.S.A. of U.S. and imported parts.
Meets Buy American requirements within the ARRA.





Job Name:
MATC Truax Landscape

Catalog Number:
RSA20C5-4-BA-GFI

Notes:

Type:
S1,S2,S3

ELL12-23054



Decorative Poles Aluminum Poles Street Poles Flag Poles My Hapco Account

Home About Products Catalogs Resources Customer Service News Careers Contact

Know all or part of our catalog #? Enter it here:

SEARCH HAPCO

4 Bolt Base RSA20C5-4

Pole Cap With Stainless Steel Screws

Luminaire **Arm Drilling** Per Customer Specs.

Optional Terrain Mounting (specify)

Reference pages 105-106 for bull horn arms and crossarms

WARNING: Do not install light pole without luminaires.

GFI

Mounting Height: 20 ft
 Wall Thickness: 156 in
 Butt Diameter: 5 in
 Top Diameter: 5 in
 Base Diameter: 7.5 in
 Bolt Circle: 7.5-9 in
 Bolt Projection: 2 in
 Bolt Size: 7/8 x 17 x 3
 Net Weight: 26
 Luminaire Weight: 50
 Arm Length:
 Quantity:

Maximum EFA
 70: 3.2
 80: 1.8
 90: 1.2
 100: 0.7
 110: 0.5

Accessories

Your Name:
 Representative Name:
 Architect Name:
 Project Name:
 Customer P.O. #:
 Finish: **powder coat black**
 Date: 12/11/2012
 Notes:

View Hapco.com or call 800-388-7171 or fax 276-628-7707 v.2.03



Our products are manufactured in the USA and meet the criteria for the Buy American Requirement under Section 1625 of the American Recovery and Reinvestment Act of 2009.

TYPE: S2,S3

CREE / HAPCO

ARE-EDG-4M-DA-08-D-UL-350-BK-43K single head

RSA20C5-4-BA-GFI

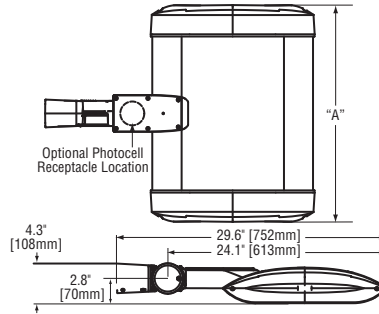


ARE-EDG-4M-AA THE EDGE® LED Area Light – Type IV Medium

Rev. Date: 8/23/11



Notes:



# of LEDs	Dim. "A"
20	12.06" [306mm]
40	12.06" [306mm]
60	14.06" [357mm]
80	16.06" [408mm]
100	18.06" [459mm]
120	20.06" [510mm]
140	22.06" [560mm]
160	24.06" [611mm]
200	28.06" [713mm]
240	32.06" [814mm]

Product	Family	Optic	Mounting	# of LEDs (x 10)	LED Series	Voltage	Color Options	Drive Current	Factory-Installed Options
ARE	EDG	4M1 4MB2	AA3	02 04 06 08 10 12 14 16 20 24	D	UL Universal 120-277V UH Universal 347-480V 12 24 240V 27 277V 34 347V	SV Silver BK Black BZ Bronze PB Platinum Bronze WH White	350 350mA 525* 525mA 700* 700mA	43K 4300K Color Temperature DIM 0-10V Dimming ^{7,8,9} F Fuse ^{10,11,12} HL Hi/Low (175/350/525, dual circuit input) ¹³ P Photocell ^{12,14} R NEMA Photocell Receptacle ^{12,15,16} ML Multi-Level (75/525) ¹³

Footnotes

- IESNA Type IV Medium distribution
- IESNA Type IV Medium distribution with backlight control
- Adjustable arm for mounting to 2" (2-3/8" [60mm] O.D.) tenon
- Available on fixtures with 20-160 LEDs
- Available on fixtures with 20-60 LEDs
- Color temperature per fixture; 6000K standard; minimum 70 CRI
- Control by others
- Refer to dimming spec sheet for availability and additional information
- Can't exceed specified drive current. Consult factory if exceeding drive current is necessary
- Not available when UH voltage is selected
- When code dictates fusing use time delay fuse
- Not available with all multi-level options. Refer to multi-level spec sheet for availability and additional information
- Refer to multi-level spec sheet for availability and additional information
- Must specify voltage other than UH
- Intended for horizontal mounting
- Photocell by others

LED PERFORMANCE SPECS

# of LEDs	Initial Delivered Lumens – Type IV Medium @ 6000K	B U G			Initial Delivered Lumens – Type IV Medium w/ backlight control @ 6000K	B U G			Initial Delivered Lumens – Type IV Medium @ 4300K	B U G			System Watts @ 120V	Total Current @ 120V	Total Current @ 240V	Total Current @ 277V	Total Current @ 347V	Total Current @ 480V	L ₇₀ Hours @ 25° C (77° F)	50K Hours Lumen Maintenance Factor* @ 15° C (59° F)			
		Rating**	Rating**	Rating**		Rating**	Rating**	Rating**															
350mA (Standard) Fixture Operating at 25° C (77° F)																							
20	1,913 (02)	1	1	1	1,441 (02)	0	1	1	1,763 (02)	1	1	1	1,328 (02)	0	1	1	26	0.20	0.11	0.10	0.09	0.07	>150,000
40	3,826 (04)	1	1	1	2,882 (04)	0	1	1	3,526 (04)	1	1	1	2,656 (04)	0	1	1	47	0.40	0.21	0.19	0.15	0.12	>150,000
60	5,665 (06)	2	1	2	4,267 (06)	1	2	1	5,221 (06)	2	1	1	3,933 (06)	1	1	1	68	0.58	0.30	0.26	0.20	0.16	>150,000
80	7,554 (08)	2	2	2	5,690 (08)	1	2	2	6,962 (08)	2	2	2	5,244 (08)	1	2	2	90	0.77	0.38	0.34	0.26	0.20	>150,000
100	9,419 (10)	2	2	2	7,095 (10)	1	2	2	8,681 (10)	2	2	2	6,539 (10)	1	2	2	111	0.95	0.47	0.42	0.32	0.24	>150,000
120	11,302 (12)	3	2	3	8,513 (12)	1	3	2	10,417 (12)	2	2	2	7,846 (12)	1	2	2	132	1.15	0.56	0.50	0.38	0.28	>150,000
140	13,126 (14)	3	3	3	9,887 (14)	1	3	2	12,098 (14)	3	3	3	9,113 (14)	1	3	2	157	1.34	0.67	0.61	0.47	0.35	149,000
160	15,001 (16)	3	3	3	11,300 (16)	1	3	2	13,826 (16)	3	3	3	10,414 (16)	1	3	2	179	1.54	0.76	0.68	0.53	0.39	149,000
200	18,752 (20)	3	3	3	14,125 (20)	1	3	3	17,282 (20)	3	3	3	13,018 (20)	1	3	2	221	1.92	0.95	0.84	0.65	0.48	149,000
240	22,502 (24)	3	3	3	16,950 (22)	2	3	3	20,739 (24)	3	3	3	15,621 (24)	2	3	3	264	2.30	1.12	1.00	0.77	0.56	149,000
525mA Fixture Operating at 25° C (77° F)																							
20	2,678 (02)	1	1	1	2,017 (02)	0	1	1	2,469 (02)	1	1	1	1,859 (02)	0	1	1	37	0.31	0.17	0.16	0.12	0.10	136,000
40	5,357 (04)	2	1	1	4,035 (04)	1	1	1	4,937 (04)	2	1	1	3,719 (04)	0	1	1	70	0.57	0.29	0.26	0.21	0.16	136,000
60	7,932 (06)	2	2	2	5,974 (06)	1	2	2	7,310 (06)	2	2	2	5,506 (06)	1	2	2	102	0.87	0.44	0.39	0.30	0.22	129,000
80	10,575 (08)	2	2	2	7,966 (08)	1	2	2	9,747 (08)	2	2	2	7,342 (08)	1	2	2	133	1.14	0.56	0.49	0.39	0.29	129,000
100	13,186 (10)	3	3	3	9,932 (10)	1	3	2	12,153 (10)	3	3	3	9,154 (10)	1	3	2	172	1.47	0.75	0.67	0.51	0.38	128,000
120	15,823 (12)	3	3	3	11,919 (12)	1	3	2	14,583 (12)	3	3	3	10,985 (12)	1	3	2	204	1.76	0.88	0.78	0.60	0.44	128,000
140	18,377 (14)	3	3	3	13,842 (14)	1	3	2	16,937 (14)	3	3	3	12,758 (14)	1	3	2	233	2.01	0.99	0.87	0.69	0.51	123,000
160	21,002 (16)	3	3	3	15,820 (16)	2	3	3	19,356 (16)	3	3	3	14,580 (16)	1	3	3	265	2.29	1.11	0.98	0.78	0.57	123,000
700mA Fixture Operating at 25° C (77° F)																							
20	3,271 (02)	1	1	1	2,450 (02)	0	1	1	3,015 (02)	1	1	1	2,258 (02)	0	1	1	50	0.42	0.22	0.20	0.15	0.12	111,000
40	6,543 (04)	2	2	2	4,900 (04)	1	2	1	6,030 (04)	2	2	2	4,516 (04)	1	2	1	93	0.79	0.40	0.35	0.27	0.20	111,000
60	9,688 (06)	2	2	2	7,255 (06)	1	2	2	8,929 (06)	2	2	2	6,686 (06)	1	2	2	137	1.18	0.59	0.51	0.39	0.29	111,000

* For recommended lumen maintenance factor data see TD-13

** For more information on the IES BUG (Backlight-Uplight-Glare) Rating visit www.iesna.org/PDF/Erratas/TM-15-07BugRatingsAddendum.pdf

NOTE: All data subject to change without notice.

© 2011 BetaLED®, a division of Ruud Lighting • 1200 92nd Street • Sturtevant, WI 53177 • 800-236-6800 • www.betaLED.com



Made in the U.S.A. of U.S. and imported parts.
Meets Buy American requirements within the ARRA.





ARE-EDG-4M-AA THE EDGE® LED Area Light – Type IV Medium

Rev. Date: 8/23/11

General Description

Slim, low profile design minimizes wind load requirements. Fixture sides are rugged cast aluminum with integral, weather-tight LED driver compartments and high performance aluminum heatsinks. Adjustable mounting arm is rugged die cast aluminum and mounts to 2" (51mm) tenon. Includes leaf/debris guard. Five year limited warranty on fixture.

Electrical

Modular design accommodates varied lighting output from high power, white, 6000K (+/- 500K per full fixture), minimum 70 CRI, long life LED sources. Optional 4300K (+/- 300K per full fixture) also available. 120-277V 50/60 Hz, Class 1 LED drivers are standard. 347-480V 50/60 Hz driver is optional. LED drivers have power factor >90% and THD <20% at full load. Units provided with integral 10kV surge suppression protection standard. Integral weather-tight electrical box with terminal strips (12Ga - 20Ga) for easy power hook-up. Surge protection tested in accordance with IEEE/ANSI C62.41.2.

Testing & Compliance

UL listed in the U.S. and Canada for wet locations and enclosure classified IP66 per IEC 60529 when ordered without P or R options. Consult factory for CE Certified products. Certified to ANSI C136.31-2001 3G bridge & overpass vibration standards. RoHS Compliant.



Product qualified on the Design Lights Consortium ("DLC") Qualified Products List ("QPL") when ordered without backlight control shield.

Finish

Exclusive Colorfast DeltaGuard® finish features an E-Coat epoxy primer with an ultra-durable silver powder topcoat, providing excellent resistance to corrosion, ultraviolet degradation and abrasion. Bronze, black, white and platinum bronze powder topcoats are also available. The finish is covered by our 10 year limited warranty.

Fixture and finish are endurance tested to withstand 5,000 hours of elevated ambient salt fog conditions as defined in ASTM Standard B 117.

Patents

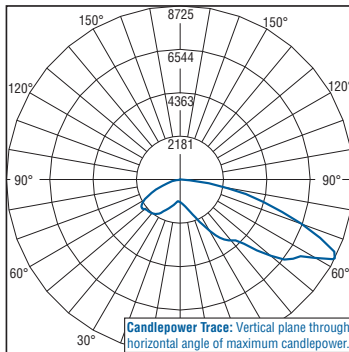
U.S. and international patents granted and pending. BetaLED is a division of Ruud Lighting, Inc. For a listing of Ruud Lighting, Inc. patents, visit www.uspto.gov.

Field-Installed Accessories

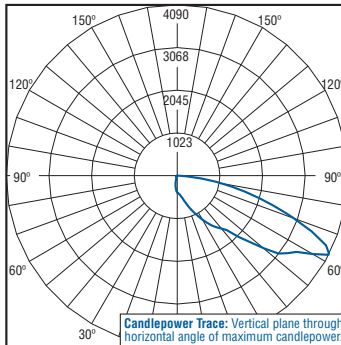


Bird Spikes
XA-BRDSPK

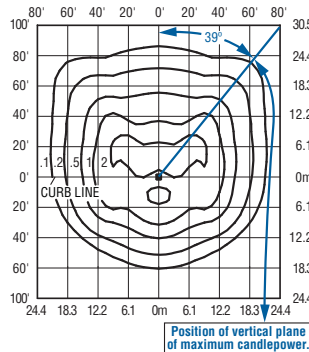
Photometrics



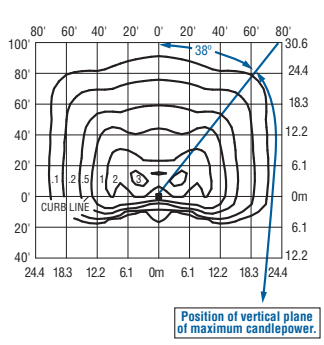
Independent Testing Laboratories certified test. Report No. ITL68090. Candlepower trace of 4300K, 120 LED Type IV Medium area luminaire with 14,934 initial delivered lumens operating at 525mA. All published luminaire photometric testing performed to IESNA LM-79-08 standards.



Independent Testing Laboratories certified test. Report No. ITL68090. Candlepower trace of 4300K, 40 LED Type IV Medium w/ backlight control area luminaire with 4,926 initial delivered lumens operating at 525mA. All published luminaire photometric testing performed to IESNA LM-79-08 standards.



Isofootcandle plot of 4300K, 120 LED Type IV Medium area luminaire at 25' (7.6 m) A.F.G. Luminaire with 14,583 initial delivered lumens operating at 525mA. Initial FC at grade.



Isofootcandle plot of 4300K, 120 LED Type IV Medium area luminaire at 25' (7.6 m) A.F.G. Luminaire with 10,985 initial delivered lumens operating at 525mA. Initial FC at grade.

NOTE: All data subject to change without notice.

THE EDGE® EPA & Weight Calculations

# of LEDs	Approximate Weight 120-480V'	Adjustable Fitter Mount 0°				
		Single	2@ 180°	2@ 90°	3@ 90°	4@ 90°
20	21.0 lbs. (9.5kg)	0.66	1.31	0.98	1.64	1.97
40	23.8 lbs. (10.8kg)	0.66	1.31	0.98	1.64	1.97
60	27.1 lbs. (12.3kg)	0.66	1.31	1.02	1.68	2.05
80	28.2 lbs. (12.8kg)	0.66	1.31	1.07	1.72	2.13
100	35.4 lbs. (16.1kg)	0.66	1.31	1.11	1.76	2.21
120	33.5 lbs. (15.2kg)	0.66	1.31	1.15	1.80	2.29
140	36.9 lbs. (16.7kg)	0.66	1.31	1.19	1.84	2.38
160	41.4 lbs. (18.8kg)	0.66	1.31	1.23	1.89	2.46
200	43.3 lbs. (19.6kg)	0.66	1.31	1.31	1.97	2.62
240	47.8 lbs. (21.7kg)	0.74	1.48	n/a ²	n/a ²	n/a ²

1. Add 5 lbs. (2.3kg) for transformer in 347-480V fixtures when multi-level options are selected.
2. For applications requiring 240 LEDs at 90 degrees refer to the DL mount version of our spec sheet.





Decorative Poles Aluminum Poles Street Poles Flag Poles My Hapco Account

Home About Products Catalogs Resources Customer Service News Careers Contact

Know all or part of our catalog #? Enter it here:

SEARCH HAPCO

4 Bolt Base RSA20C5-4-

Pole Cap With Stainless Steel Screws

Optional Terrain Mounting (specify)

Luminaire **Arm Drilling** Per Customer Specs.

Reference pages 105-106 for bull horn arms and crossarms

WARNING: Do not install light pole without luminaires.

GFI

Labeling: Holes Opposite Handhole For 4" O.D. Poles
Handhole Flange Tapped 3/8" - 16NC For Grounding For 7" - 10" O.D. Poles

- Bolt Round Handhole with Cover and Stainless Steel Hex Nut Screws
3" x 5" For 6" Poles
4" x 6" For 7" and larger Poles
- Handhole (2" x 2") with Cover and Stainless Steel Hex Nut Screws for Poles with Butt Diameters 3" or smaller

4" Butt Diameter
Base Flange Alloy 356-T6 with Bolt Covers and Stainless Oil Res. HC. Screws

(4) Galv. Stl. Anchor Bolts, A492D M31-4-90 Grade 55, 10" OF Threaded End Galv. Per ASTM A153 WITH (4) Galv. Stl. Hex. Nuts, Lockwashers And Flatwashers

7" Dia. Bolt Circle

Arm

1/2" Bolt Projection

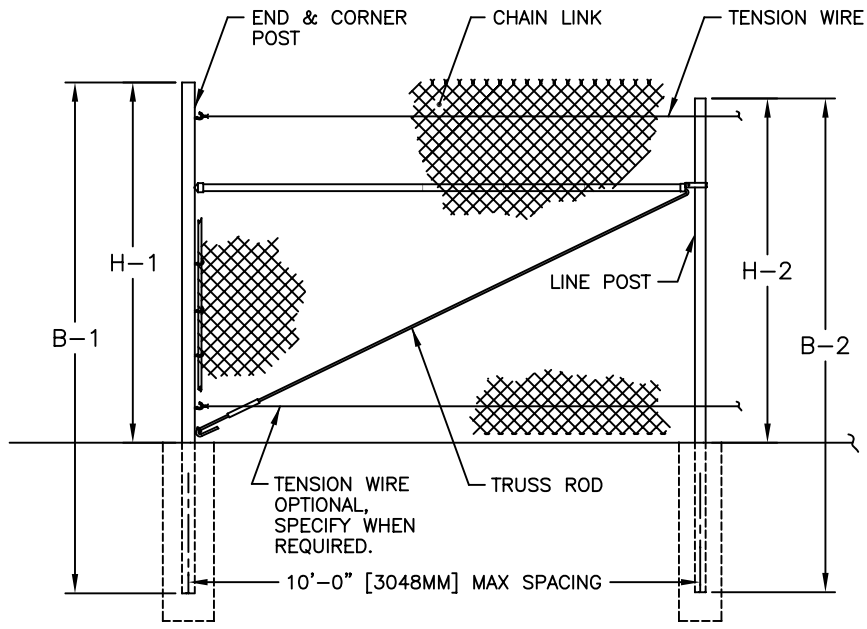
Mounting Height:	20 ft		
Wall Thickness:	156 in	Maximum EFA	
Butt Diameter:	5 in	70:	3.2
Top Diameter:	5 in	80:	1.8
Base Diameter:	7.5 in	90:	1.2
Bolt Circle:	7.5-9 in	100:	0.7
Bolt Projection:	2 in	110:	0.5
Bolt Size:	7/8 x 17 x 3		
Net Weight:	26	Accessories	
Luminaire Weight:	50		
Arm Length:			
Quantity:			

Visit Hapco.com or call 800-388-7171 or fax 276-628-7707

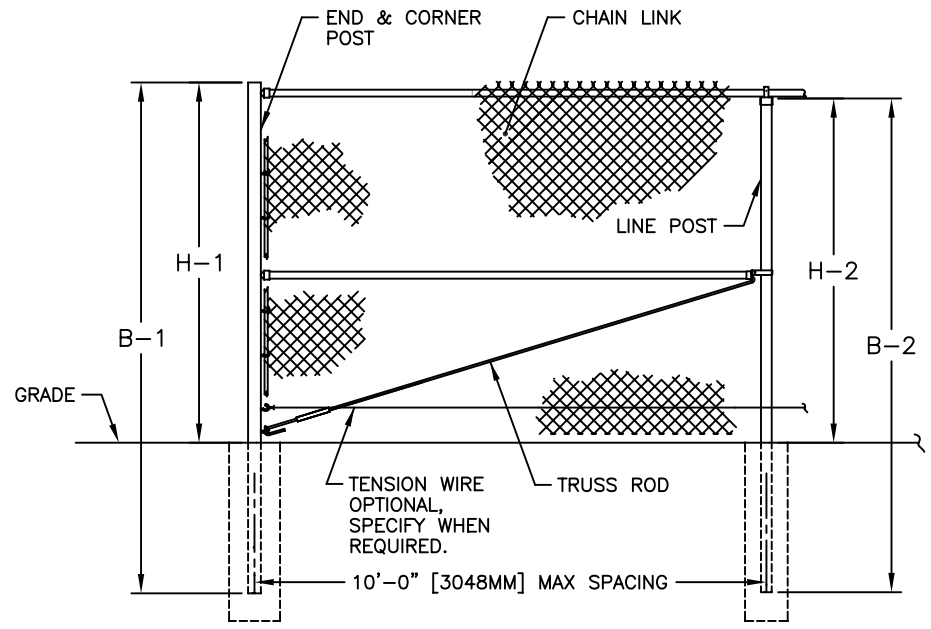
v.2.03

Your Name: _____
 Representative Name: _____
 Architect Name: _____
 Project Name: _____
 Customer P.O. #: _____
 Finish: **powder coat black**
 Date: 12/11/2012
 Notes:





FENCE SECTION ELEVATION
WITHOUT TOP RAIL & WITHOUT BARBED WIRE



FENCE SECTION ELEVATION
WITH TOP RAIL & WITHOUT BARBED WIRE

FENCE HEIGHT NOMINAL HEIGHT	END & CORNER POSTS		LINE POSTS	
	B-1 BAR LENGTH	H-1 HEIGHT ABOVE GRADE	B-2 BAR LENGTH	H-2 HEIGHT ABOVE GRADE
5'-0" [1524MM]	8'-0" [2438MM]	5'-0 5/8" [1540MM]	7'-8" [2337MM]	4'-8 7/8" [1445MM]
6'-0" [1829MM]	9'-0" [2743MM]	6'-0 5/8" [1845MM]	8'-8" [2642MM]	5'-8 7/8" [1749MM]
7'-0" [2134MM]	10'-0" [3048MM]	7'-0 5/8" [2150MM]	9'-8" [2946MM]	6'-8 7/8" [2054MM]
8'-0" [2438MM]	11'-0" [3353MM]	8'-0 5/8" [2454MM]	10'-8" [3251MM]	7'-8 7/8" [2359MM]
9'-0" [2743MM]	12'-0" [3658MM]	9'-0 5/8" [2759MM]	11'-8" [3556MM]	8'-8 7/8" [2664MM]
10'-0" [3048MM]	13'-0" [3962MM]	10'-0 5/8" [3064MM]	12'-8" [3861MM]	9'-8 7/8" [2969MM]
11'-0" [3353MM]	14'-0" [4267MM]	11'-0 5/8" [3369MM]	13'-8" [4166MM]	10'-8 7/8" [3273MM]
12'-0" [3658MM]	15'-0" [4572MM]	12'-0 5/8" [3674MM]	14'-8" [4470MM]	11'-8 7/8" [3578MM]

NOTES:
1. THIS DWG CORRESPONDS WITH DWGS 1-1110 & 1-1130.
2. SPECIFICATIONS SHOWN CAN BE CHANGED BY MASTER HALCO ONLY.



ANCHOR FENCE PRODUCTS
by Master Halco
Orange, CA
Phone No.: 800-229-5615
www.FenceOnline.com

TYPICAL HIGH FENCE WITHOUT BARBED WIRED

DIMENSIONS & SPECIFICATIONS

BY:	JRR	DWG:	1-1000
DATE:	09-27-95	LAYER:	
REV:	C	SCALE:	1/4" = 1'-0"
REV DATE:	08-04-06		



MADISON COLLEGE PROPOSED BURN TOWER FACILITY OVERVIEW



MADISON COLLEGE PROPOSED BURN TOWER FACILITY NORTH ENTRY



MADISON COLLEGE PROPOSED BURN TOWER FACILITY PEARSON ST.



MADISON COLLEGE PROPOSED BURN TOWER FACILITY SOUTH ENTRY

ALTHOUGH EVERY EFFORT HAS BEEN MADE IN PREPARING THESE PLANS AND CHECKING THEM FOR ACCURACY, THE CONTRACTOR AND SUBCONTRACTORS MUST CHECK ALL DETAIL AND DIMENSIONS OF THEIR TRADE AND BE RESPONSIBLE FOR THE SAME.

DESIGN:	JLF	08-28-11
DRAWN:	JLF	03-27-13
APPROVED:	WPW	

PLAN MODIFICATIONS:	DATE:
UDC SUBMITTAL - INFORMATIONAL	06-05-13
UDC SUBMITTAL - FINAL APPROVAL	07-17-13



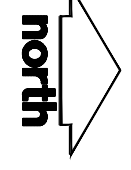
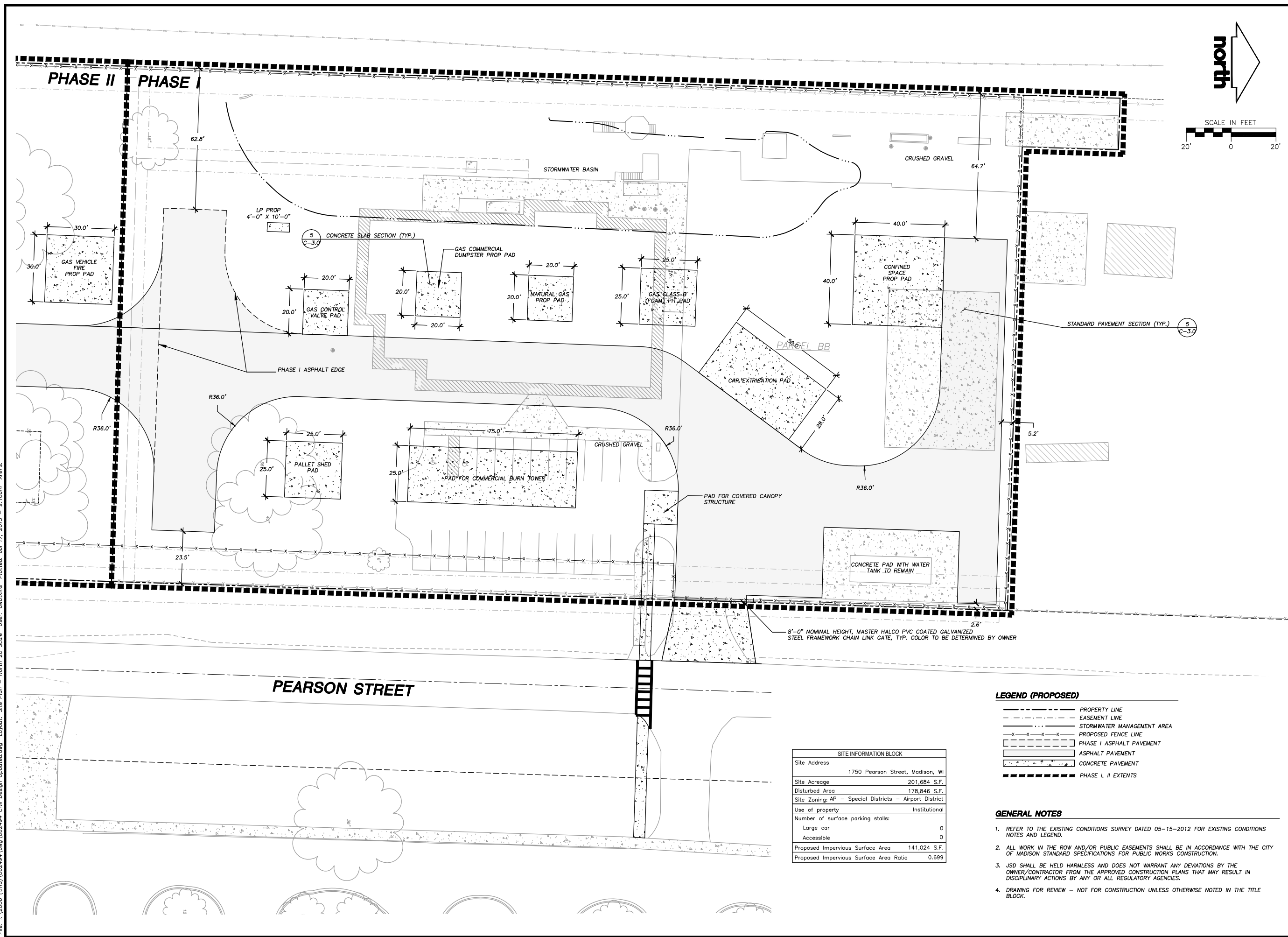
Toll Free (800) 242-8511
 Milwaukee Area (414) 259-1181
 Hearing Impaired TDD (800) 542-2289
www.DiggersHotline.com

SHEET TITLE:

**SITE PLAN -
 NORTH LOT**

SHEET NUMBER:

C-1.0



LEGEND (PROPOSED)

	PROPERTY LINE
	EASEMENT LINE
	STORMWATER MANAGEMENT AREA
	PROPOSED FENCE LINE
	PHASE I ASPHALT PAVEMENT
	ASPHALT PAVEMENT
	CONCRETE PAVEMENT
	PHASE I, II EXTENTS

SITE INFORMATION BLOCK	
Site Address	1750 Pearson Street, Madison, WI
Site Acreage	201,684 S.F.
Disturbed Area	178,846 S.F.
Site Zoning: AP - Special Districts - Airport District	
Use of property	Institutional
Number of surface parking stalls:	
Large car	0
Accessible	0
Proposed Impervious Surface Area	141,024 S.F.
Proposed Impervious Surface Area Ratio	0.699

- GENERAL NOTES**
- REFER TO THE EXISTING CONDITIONS SURVEY DATED 05-15-2012 FOR EXISTING CONDITIONS NOTES AND LEGEND.
 - ALL WORK IN THE ROW AND/OR PUBLIC EASEMENTS SHALL BE IN ACCORDANCE WITH THE CITY OF MADISON STANDARD SPECIFICATIONS FOR PUBLIC WORKS CONSTRUCTION.
 - JSD SHALL BE HELD HARMLESS AND DOES NOT WARRANT ANY DEVIATIONS BY THE OWNER/CONTRACTOR FROM THE APPROVED CONSTRUCTION PLANS THAT MAY RESULT IN DISCIPLINARY ACTIONS BY ANY OR ALL REGULATORY AGENCIES.
 - DRAWING FOR REVIEW - NOT FOR CONSTRUCTION UNLESS OTHERWISE NOTED IN THE TITLE BLOCK.

File: i:\2006 (rmj)\062494.dwg 06/24/14 Civil Design Updated.dwg Layout: Site Plan - North 20 Scale User: awatkins Plotted: Jul 17, 2013 - 9:10am Xref's:

- CIVIL ENGINEERING
- SURVEYING & MAPPING
- CONSTRUCTION SERVICES
- WATER RESOURCES
- PLANNING & DEVELOPMENT
- TRANSPORTATION ENGINEERING
- STRUCTURAL ENGINEERING
- LANDSCAPE ARCHITECTURE

MADISON REGIONAL OFFICE
 161 HORIZON DRIVE, SUITE 101
 VERONA, WISCONSIN 53593
 608.848.5060 PHONE | 608.848.2255 FAX
 MADISON | MILWAUKEE
 KENOSHA | APPLETON
 www.jsdinc.com

SERVICES PROVIDED TO:
MADISON COLLEGE

PROJECT:
**MADISON COLLEGE
 FIRE TRAINING FACILITY**

PROJECT LOCATION:
 MADISON
 DANE COUNTY, WI

JSD PROJECT NO.:

SEAL/SIGNATURE:

ALTHOUGH EVERY EFFORT HAS BEEN MADE IN PREPARING THESE PLANS AND CHECKING THEM FOR ACCURACY, THE CONTRACTOR AND SUBCONTRACTORS MUST CHECK ALL DETAIL AND DIMENSIONS OF THEIR TRADE AND BE RESPONSIBLE FOR THE SAME.

DESIGN: JLF 08-28-11
 DRAWN: JLF 03-27-13
 APPROVED: WPW

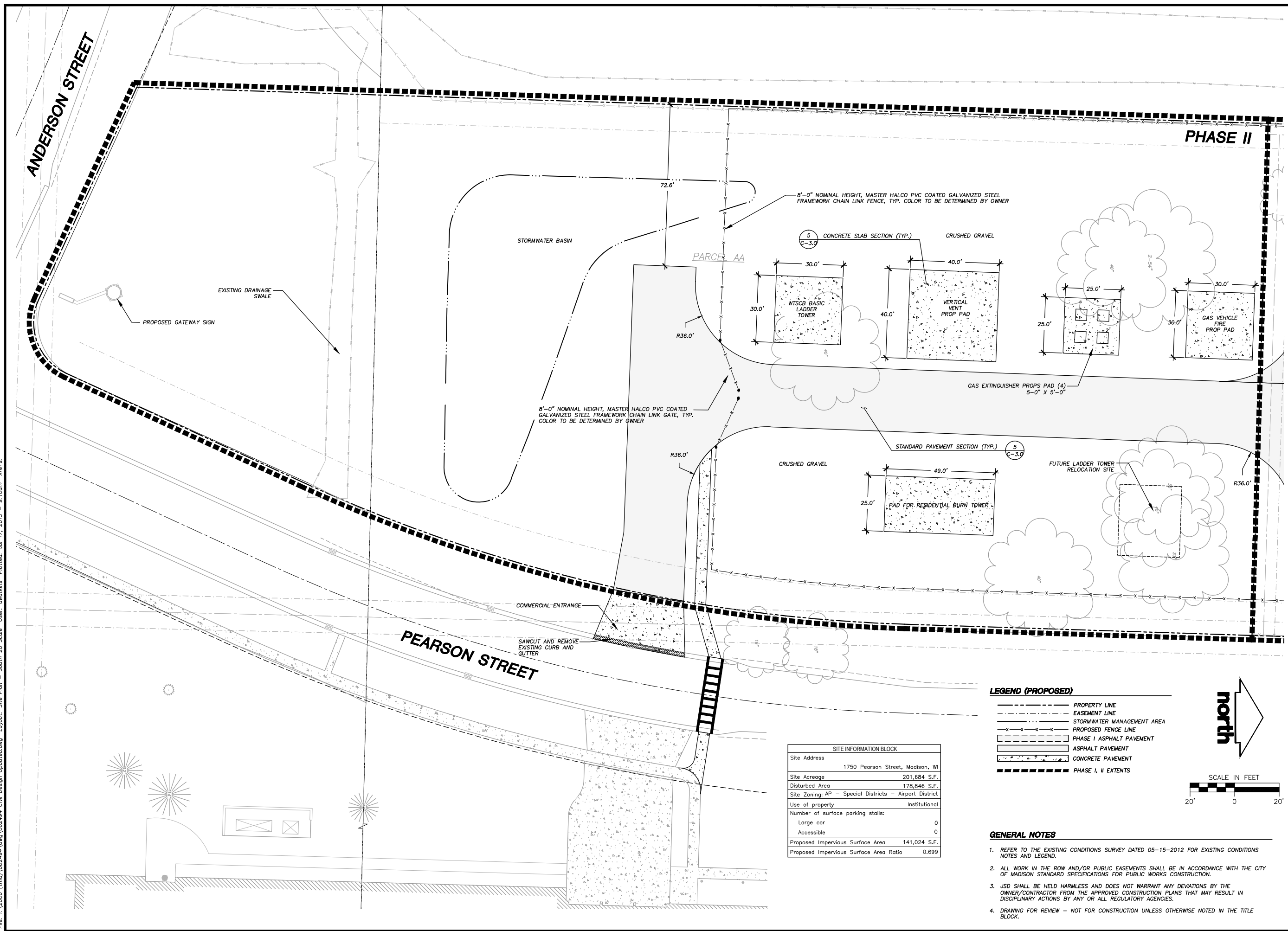
PLAN MODIFICATIONS: DATE:
 UDC SUBMITTAL - INFORMATIONAL 06-05-13
 UDC SUBMITTAL - FINAL APPROVAL 07-17-13



Toll Free (800) 242-8511
 Milwaukee Area (414) 259-1181
 Hearing Impaired TDD (800) 542-2289
 www.DiggersHotline.com

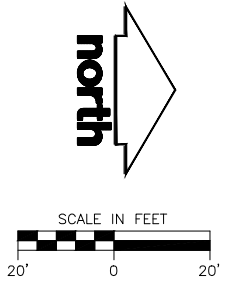
SHEET TITLE:
**SITE PLAN -
 SOUTH LOT**

SHEET NUMBER:
C-1.1



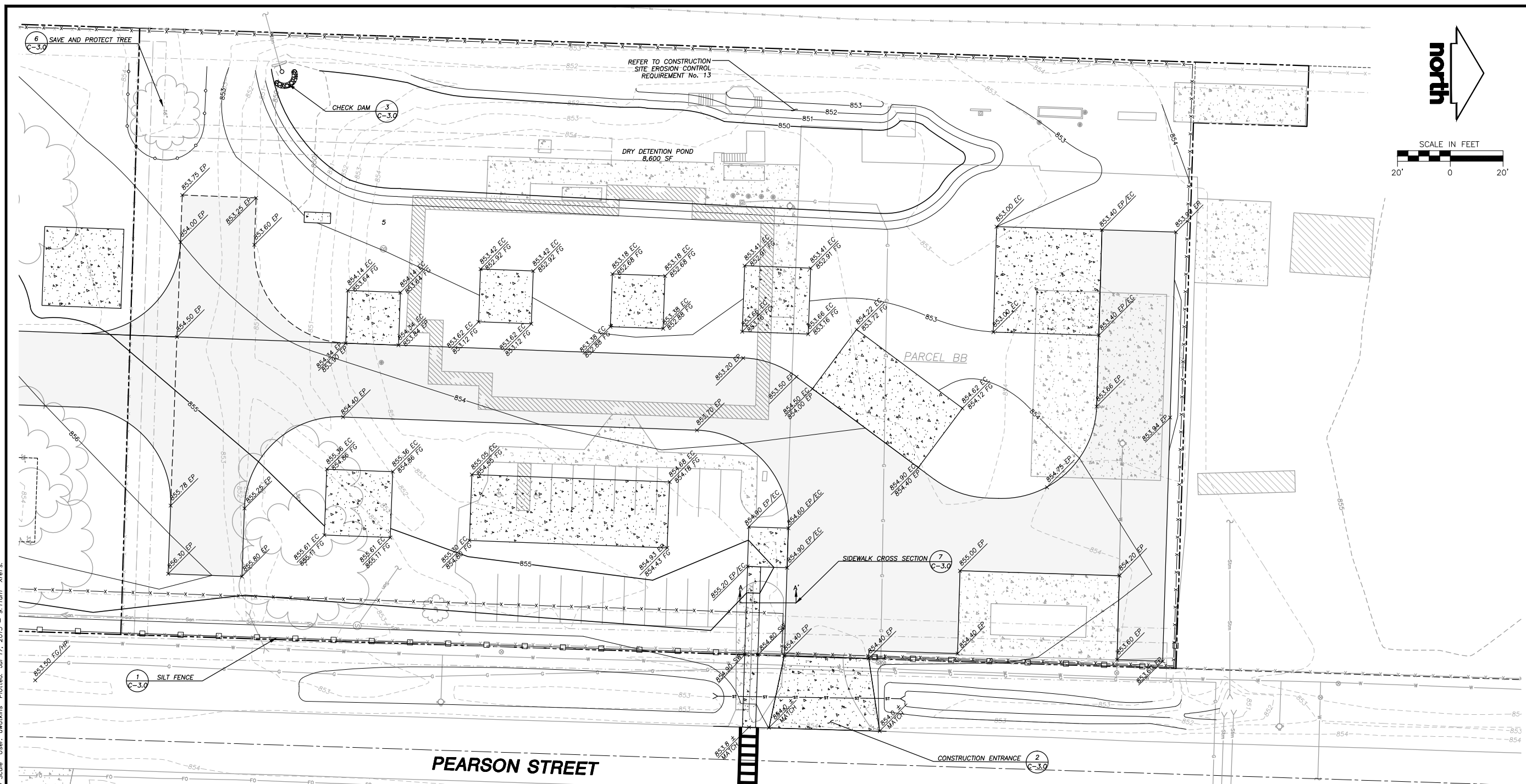
SITE INFORMATION BLOCK	
Site Address	1750 Pearson Street, Madison, WI
Site Acreage	201,684 S.F.
Disturbed Area	178,846 S.F.
Site Zoning: AP - Special Districts - Airport District	
Use of property	Institutional
Number of surface parking stalls:	
Large car	0
Accessible	0
Proposed Impervious Surface Area	141,024 S.F.
Proposed Impervious Surface Area Ratio	0.699

- LEGEND (PROPOSED)**
- PROPERTY LINE
 - EASEMENT LINE
 - STORMWATER MANAGEMENT AREA
 - PROPOSED FENCE LINE
 - PHASE I ASPHALT PAVEMENT
 - ASPHALT PAVEMENT
 - CONCRETE PAVEMENT
 - PHASE I, II EXTENTS



- GENERAL NOTES**
- REFER TO THE EXISTING CONDITIONS SURVEY DATED 05-15-2012 FOR EXISTING CONDITIONS NOTES AND LEGEND.
 - ALL WORK IN THE ROW AND/OR PUBLIC EASEMENTS SHALL BE IN ACCORDANCE WITH THE CITY OF MADISON STANDARD SPECIFICATIONS FOR PUBLIC WORKS CONSTRUCTION.
 - JSD SHALL BE HELD HARMLESS AND DOES NOT WARRANT ANY DEVIATIONS BY THE OWNER/CONTRACTOR FROM THE APPROVED CONSTRUCTION PLANS THAT MAY RESULT IN DISCIPLINARY ACTIONS BY ANY OR ALL REGULATORY AGENCIES.
 - DRAWING FOR REVIEW - NOT FOR CONSTRUCTION UNLESS OTHERWISE NOTED IN THE TITLE BLOCK.

File: i:\2006 (rmj)\062494.dwg 062494 Civil Design Updated.dwg Layout: Site Plan - South 20 Scale User: awatkins Plotted: Jul 17, 2013 - 9:10am Xref's:



LEGEND (PROPOSED)

	PROPERTY LINE
	PROPOSED 1 FOOT CONTOUR
	PROPOSED 5 FOOT CONTOUR
	STORM SEWER
	SILT FENCE
	TREE PROTECTION
	PROPOSED FENCE LINE
	PHASE I ASPHALT PAVEMENT
	ASPHALT PAVEMENT
	CONCRETE PAVEMENT
	SPOT GRADE
	EP - EDGE OF PAVEMENT
	EP - EDGE OF CONCRETE
	HP - HIGH POINT
	CHECK DAM

CONSTRUCTION SITE EROSION CONTROL REQUIREMENTS

- ALL EROSION AND SEDIMENT CONTROL PRACTICES SHALL BE DESIGNED AND IMPLEMENTED IN ACCORDANCE WITH THE CURRENT DEPARTMENT OF NATURAL RESOURCES EROSION AND SEDIMENT CONTROL TECHNICAL STANDARDS WHICH ARE AVAILABLE AT: <http://www.dnr.state.wi.us/runoff/stormwater/techstds.htm>
- INSTALL EROSION CONTROL MEASURES PRIOR TO ANY SITE WORK, INCLUDING GRADING OR DISTURBANCE OF EXISTING SURFACE MATERIALS AS SHOWN ON PLAN. MODIFICATIONS TO SEDIMENT CONTROL DESIGN MAY BE CONDUCTED TO MEET UNFORESEEN FIELD CONDITIONS IF MODIFICATIONS CONFORM TO WDNR TECHNICAL STANDARDS.
- INSPECTIONS AND MAINTENANCE OF ALL EROSION CONTROL MEASURES SHALL BE ROUTINE (ONCE PER WEEK MINIMUM) TO ENSURE PROPER FUNCTION OF EROSION CONTROLS AT ALL TIMES. EROSION CONTROL MEASURES ARE TO BE IN WORKING ORDER AT THE END OF EACH WORK DAY. ONLINE REPORTING OF INSPECTIONS AND MAINTENANCE IS REQUIRED TO BE SUBMITTED TO THE CITY OF MADISON.
- INSPECT EROSION CONTROL MEASURES AFTER EACH 1/2" OR GREATER RAINFALL. REPAIR ANY DAMAGE OBSERVED DURING THE INSPECTION.
- EROSION CONTROL MEASURES SHALL BE REMOVED ONLY AFTER SITE CONSTRUCTION IS COMPLETE WITH ALL SOIL SURFACES HAVING AN ESTABLISHED VEGETATIVE COVER.
- INSTALL A TRACKING PAD, 50' LONG AND NO LESS THAN 12" THICK BY USE OF 3" CLEAR STONE. TRACKING PADS ARE TO BE MAINTAINED BY THE CONTRACTOR IN A CONDITION WHICH WILL PREVENT THE TRACKING OF MUD OR DRY SEDIMENT ONTO THE ADJACENT PUBLIC STREETS AFTER EACH WORKING DAY OR MORE FREQUENTLY AS REQUIRED BY THE CITY OF MADISON.
- INSTALL EROSION CONTROLS ON THE DOWNSTREAM SIDE OF STOCKPILES AND PROVIDE TEMPORARY SEEDING ON STOCKPILES WHICH ARE TO REMAIN IN PLACE FOR MORE THAN 7 DAYS.
- INSTALL CHECK DAMS WITHIN DRAINAGE DITCHES AND IN FRONT OF SILT FENCING IN ANY LOW AREA ALL IN ACCORDANCE WITH WDNR TECHNICAL STANDARDS.
- EROSION CONTROL FOR UTILITY CONSTRUCTION (STORM SEWER, SANITARY SEWER, WATER MAIN, ETC.):
 - PLACE EXCAVATED TRENCH MATERIAL ON THE HIGH SIDE OF THE TRENCH.
 - BACKFILL, COMPACT, AND STABILIZE THE TRENCH IMMEDIATELY AFTER PIPE CONSTRUCTION.
 - DISCHARGE TRENCH WATER INTO A SEDIMENTATION BASIN OR FILTERING TANK IN ACCORDANCE WITH THE Dewatering TECHNICAL STANDARD NO. 1061 PRIOR TO RELEASE INTO THE STORM SEWER, RECEIVING STREAM, OR DRAINAGE DITCH.

- GENERAL NOTES**
- REFER TO THE EXISTING CONDITIONS SURVEY DATED 05-15-2012 FOR EXISTING CONDITIONS NOTES AND LEGEND.
 - ALL WORK IN THE ROW SHALL BE IN ACCORDANCE WITH THE CITY OF MADISON STANDARD SPECIFICATIONS FOR PUBLIC WORKS CONSTRUCTION.
 - JSD SHALL BE HELD HARMLESS AND DOES NOT WARRANT ANY DEVIATIONS BY THE OWNER/CONTRACTOR FROM THE APPROVED CONSTRUCTION PLANS THAT MAY RESULT IN DISCIPLINARY ACTIONS BY ANY OR ALL REGULATORY AGENCIES.
 - DRAWING FOR REVIEW - NOT FOR CONSTRUCTION UNLESS OTHERWISE NOTED IN THE TITLE BLOCK.

CONSTRUCTION SITE EROSION CONTROL REQUIREMENTS (CONTD)

- INSTALL TYPE D INLET PROTECTION AROUND ALL STORM SEWER INLETS AND CATCH BASINS THAT MAY RECEIVE RUNOFF FROM AREAS UNDER CONSTRUCTION. REFER TO WISDOT FDM FOR RESPECTIVE DETAILS.
- APPLY ANIONIC POLYMER TO DISTURBED AREAS IF EROSION BECOMES PROBLEMATIC.
- ADDITIONAL EROSION CONTROL MEASURES, AS REQUESTED BY STATE INSPECTORS, LOCAL INSPECTORS, AND/OR ENGINEER SHALL BE INSTALLED WITHIN 24 HOURS OF REQUEST.
- ALL SLOPES EXCEEDING 5:1 (20%) SHALL BE STABILIZED WITH A CLASS II, TYPE B EROSION MATTING AND DRAINAGE SWALES SHALL BE STABILIZED WITH CLASS I, TYPE B EROSION MATTING OR APPLICATION OF A WDOT APPROVED POLYMER SOIL STABILIZATION TREATMENT OR A COMBINATION THEREOF, AS REQUIRED. CONTRACTOR SHALL PROVIDE PRODUCT SPECIFICATIONS TO PROJECT ENGINEER FOR APPROVAL.
- CONTRACTOR/OWNER SHALL FILE A NOTICE OF TERMINATION UPON VEGETATIVE STABILIZATION AND/OR PROPERTY SALE IN ACCORDANCE WITH WDNR REQUIREMENTS.
- CONTRACTOR SHALL TAKE ALL NECESSARY STEPS TO CONTROL DUST ARISING FROM CONSTRUCTION OPERATIONS. REFER TO WDNR TECHNICAL STANDARD 1068.
- CONTRACTOR TO PROVIDE SOLID LID OR METAL PLATE ON ALL OPEN MANHOLES DURING CONSTRUCTION TO MINIMIZE SEDIMENT FROM ENTERING THE STORM SEWER SYSTEM.

GRADING AND SEEDING NOTES

- ALL DISTURBED AREAS SHALL BE SEEDING AND MULCHED IMMEDIATELY FOLLOWING GRADING ACTIVITIES. SEED SHALL BE DOT SEED MIXTURE 40 OR SIMILAR LAWN TYPE SEED MIX. MIXTURE SHALL BE APPLIED AT A RATE OF FIVE POUNDS PER ONE-THOUSAND SQUARE FEET.
- ALL PROPOSED GRADES SHOWN ARE FINISHED GRADES. CONTRACTOR SHALL VERIFY ALL GRADES, MAKE SURE ALL AREAS DRAIN PROPERLY AND SHALL REPORT ANY DISCREPANCIES TO THE ENGINEER PRIOR TO CONSTRUCTION.
- CONTRACTOR SHALL WATER ALL NEWLY SEEDING AREAS DURING THE SUMMER MONTHS WHENEVER THERE IS A 7 DAY LAPSE WITH NO SIGNIFICANT RAINFALL.
- CONTRACTOR TO DEEP TILL ALL COMPACTED PERVIOUS SURFACES PRIOR TO SEEDING AND MULCHING. THIS MUST BE VERIFIED BY THE ENGINEER AS PART OF THE AS-BUILT CERTIFICATION.

File: I:\2006 (fwd)\062494.dwg Layout: GEC - North 20 Scale User: awatkins Plotted: Jul 17, 2013 - 9:11am Xrefs:

- CIVIL ENGINEERING
- SURVEYING & MAPPING
- CONSTRUCTION SERVICES
- WATER RESOURCES
- PLANNING & DEVELOPMENT
- TRANSPORTATION ENGINEERING
- STRUCTURAL ENGINEERING
- LANDSCAPE ARCHITECTURE

MADISON REGIONAL OFFICE
 161 HORIZON DRIVE, SUITE 101
 VERONA, WISCONSIN 53593
 608.848.5060 PHONE | 608.848.2255 FAX

MADISON | MILWAUKEE
 KENOSHA | APPLETON
www.jsdinc.com

SERVICES PROVIDED TO:
MADISON COLLEGE

PROJECT:
**MADISON COLLEGE
 FIRE TRAINING
 FACILITY**

PROJECT LOCATION:
 MADISON
 DANE COUNTY, WI

JSD PROJECT NO.:

SEAL/SIGNATURE:

ALTHOUGH EVERY EFFORT HAS BEEN MADE IN PREPARING THESE PLANS AND CHECKING THEM FOR ACCURACY, THE CONTRACTOR AND SUBCONTRACTORS MUST CHECK ALL DETAIL AND DIMENSIONS OF THEIR TRADE AND BE RESPONSIBLE FOR THE SAME.

DESIGN: JLF 08-28-11
 DRAWN: AJW 07-15-13
 APPROVED: WPW

PLAN MODIFICATIONS:	DATE:
UDC SUBMITTAL - INFORMATIONAL	06-05-13
UDC SUBMITTAL - FINAL APPROVAL	07-17-13



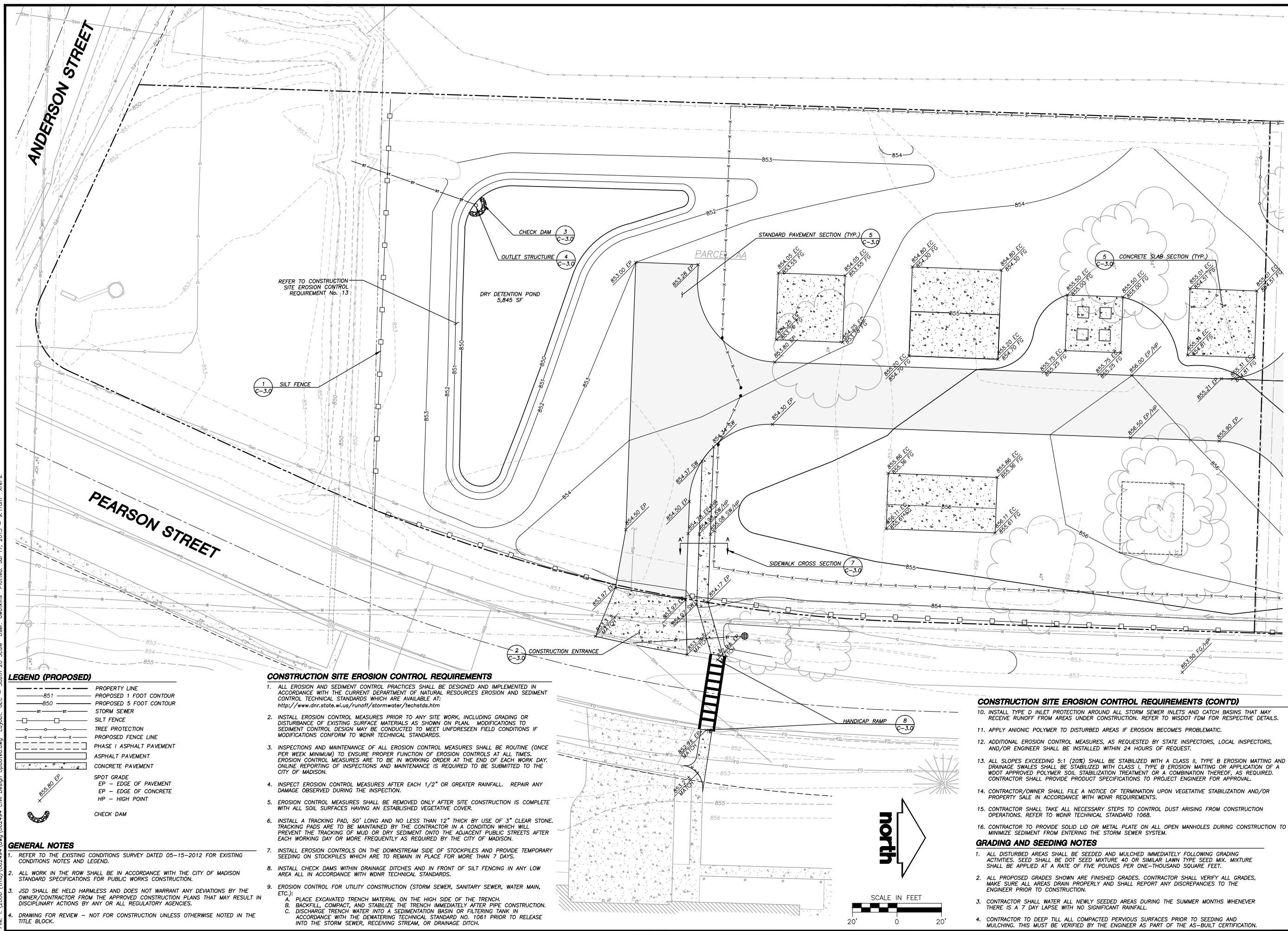
Toll Free (800) 242-8511
 Milwaukee Area (414) 259-1181
 Hearing Impaired TDD (800) 542-2289
www.DiggersHotline.com

SHEET TITLE:

**GRADING AND
 EROSION CONTROL
 PLAN - SOUTH LOT**

SHEET NUMBER:

C-2.1



LEGEND (PROPOSED)

- PROPERTY LINE
- PROPOSED 1 FOOT CONTOUR
- PROPOSED 5 FOOT CONTOUR
- ST - ST
- STORM SEWER
- SILT FENCE
- TREE PROTECTION
- PROPOSED FENCE LINE
- PHASE I ASPHALT PAVEMENT
- ASPHALT PAVEMENT
- CONCRETE PAVEMENT
- SPOT GRADE
- EP - EDGE OF PAVEMENT
- EC - EDGE OF CONCRETE
- HP - HIGH POINT
- CHECK DAM

CONSTRUCTION SITE EROSION CONTROL REQUIREMENTS

- ALL EROSION AND SEDIMENT CONTROL PRACTICES SHALL BE DESIGNED AND IMPLEMENTED IN ACCORDANCE WITH THE CURRENT DEPARTMENT OF NATURAL RESOURCES EROSION AND SEDIMENT CONTROL TECHNICAL STANDARDS WHICH ARE AVAILABLE AT: <http://www.dnr.state.wi.us/runoff/stormwater/techstds.htm>
- INSTALL EROSION CONTROL MEASURES PRIOR TO ANY SITE WORK, INCLUDING GRADING OR DISTURBANCE OF EXISTING SURFACE MATERIALS AS SHOWN ON PLAN. MODIFICATIONS TO SEDIMENT CONTROL DESIGN MAY BE CONDUCTED TO MEET UNFORESEEN FIELD CONDITIONS IF MODIFICATIONS CONFORM TO WDNR TECHNICAL STANDARDS.
- INSPECTIONS AND MAINTENANCE OF ALL EROSION CONTROL MEASURES SHALL BE ROUTINE (ONCE PER WEEK MINIMUM) TO ENSURE PROPER FUNCTION OF EROSION CONTROLS AT ALL TIMES. EROSION CONTROL MEASURES ARE TO BE IN WORKING ORDER AT THE END OF EACH WORK DAY. ONLINE REPORTING OF INSPECTIONS AND MAINTENANCE IS REQUIRED TO BE SUBMITTED TO THE CITY OF MADISON.
- INSPECT EROSION CONTROL MEASURES AFTER EACH 1/2" OR GREATER RAINFALL. REPAIR ANY DAMAGE OBSERVED DURING THE INSPECTION.
- EROSION CONTROL MEASURES SHALL BE REMOVED ONLY AFTER SITE CONSTRUCTION IS COMPLETE WITH ALL SOIL SURFACES HAVING AN ESTABLISHED VEGETATIVE COVER.
- INSTALL A TRACKING PAD, 50' LONG AND NO LESS THAN 12" THICK BY USE OF 3" CLEAR STONE. TRACKING PADS ARE TO BE MAINTAINED BY THE CONTRACTOR IN A CONDITION WHICH WILL PREVENT THE TRACKING OF MUD OR DRY SEDIMENT ONTO THE ADJACENT PUBLIC STREETS AFTER EACH WORKING DAY OR MORE FREQUENTLY AS REQUIRED BY THE CITY OF MADISON.
- INSTALL EROSION CONTROLS ON THE DOWNSTREAM SIDE OF STOCKPILES AND PROVIDE TEMPORARY SEEDING ON STOCKPILES WHICH ARE TO REMAIN IN PLACE FOR MORE THAN 7 DAYS.
- INSTALL CHECK DAMS WITHIN DRAINAGE DITCHES AND IN FRONT OF SILT FENCING IN ANY LOW AREA ALL IN ACCORDANCE WITH WDNR TECHNICAL STANDARDS.
- EROSION CONTROL FOR UTILITY CONSTRUCTION (STORM SEWER, SANITARY SEWER, WATER MAIN, ETC.):
 - PLACE EXCAVATED TRENCH MATERIAL ON THE HIGH SIDE OF THE TRENCH.
 - BACKFILL, COMPACT, AND STABILIZE THE TRENCH IMMEDIATELY AFTER PIPE CONSTRUCTION.
 - DISCHARGE TRENCH WATER INTO A SEDIMENTATION BASIN OR FILTERING TANK IN ACCORDANCE WITH THE DEWATERING TECHNICAL STANDARD NO. 1061 PRIOR TO RELEASE INTO THE STORM SEWER, RECEIVING STREAM, OR DRAINAGE DITCH.

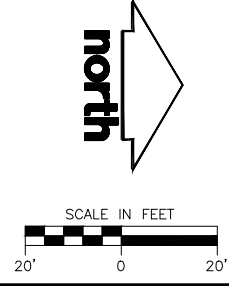
- GENERAL NOTES**
- REFER TO THE EXISTING CONDITIONS SURVEY DATED 05-15-2012 FOR EXISTING CONDITIONS NOTES AND LEGEND.
 - ALL WORK IN THE ROW SHALL BE IN ACCORDANCE WITH THE CITY OF MADISON STANDARD SPECIFICATIONS FOR PUBLIC WORKS CONSTRUCTION.
 - JSD SHALL BE HELD HARMLESS AND DOES NOT WARRANT ANY DEVIATIONS BY THE OWNER/CONTRACTOR FROM THE APPROVED CONSTRUCTION PLANS THAT MAY RESULT IN DISCIPLINARY ACTIONS BY ANY OR ALL REGULATORY AGENCIES.
 - DRAWING FOR REVIEW - NOT FOR CONSTRUCTION UNLESS OTHERWISE NOTED IN THE TITLE BLOCK.

CONSTRUCTION SITE EROSION CONTROL REQUIREMENTS (CONTD)

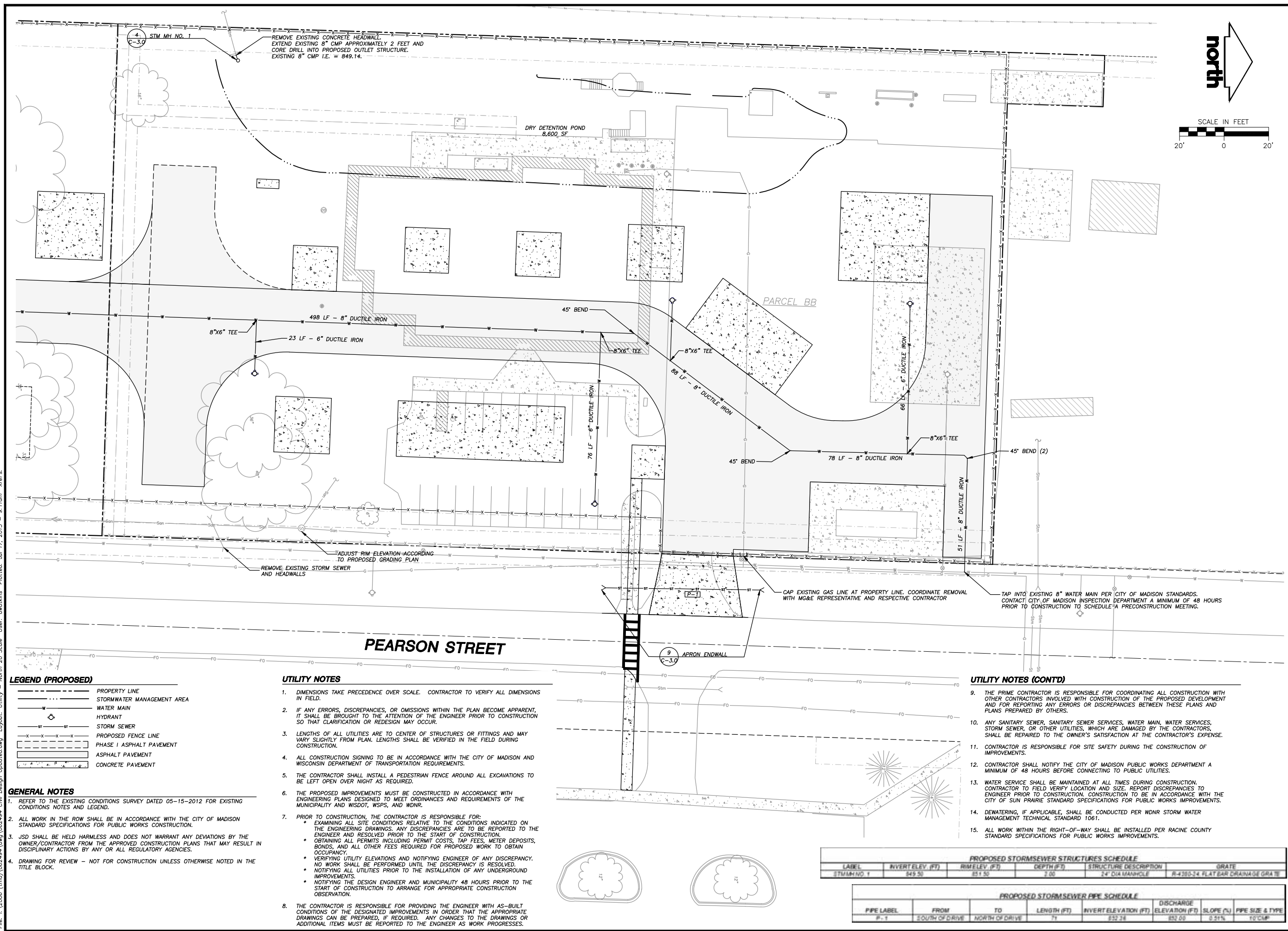
- INSTALL TYPE D INLET PROTECTION AROUND ALL STORM SEWER INLETS AND CATCH BASINS THAT MAY RECEIVE RUNOFF FROM AREAS UNDER CONSTRUCTION. REFER TO WISDOT FDM FOR RESPECTIVE DETAILS.
- APPLY ANIONIC POLYMER TO DISTURBED AREAS IF EROSION BECOMES PROBLEMATIC.
- ADDITIONAL EROSION CONTROL MEASURES, AS REQUESTED BY STATE INSPECTORS, LOCAL INSPECTORS, AND/OR ENGINEER SHALL BE INSTALLED WITHIN 24 HOURS OF REQUEST.
- ALL SLOPES EXCEEDING 5:1 (20%) SHALL BE STABILIZED WITH A CLASS II, TYPE B EROSION MATTING AND DRAINAGE SWALES SHALL BE STABILIZED WITH CLASS I, TYPE B EROSION MATTING OR APPLICATION OF A WDOT APPROVED POLYMER SOIL STABILIZATION TREATMENT OR A COMBINATION THEREOF, AS REQUIRED. CONTRACTOR SHALL PROVIDE PRODUCT SPECIFICATIONS TO PROJECT ENGINEER FOR APPROVAL.
- CONTRACTOR/OWNER SHALL FILE A NOTICE OF TERMINATION UPON VEGETATIVE STABILIZATION AND/OR PROPERTY SALE IN ACCORDANCE WITH WDNR REQUIREMENTS.
- CONTRACTOR SHALL TAKE ALL NECESSARY STEPS TO CONTROL DUST ARISING FROM CONSTRUCTION OPERATIONS. REFER TO WDNR TECHNICAL STANDARD 1068.
- CONTRACTOR TO PROVIDE SOLID LID OR METAL PLATE ON ALL OPEN MANHOLES DURING CONSTRUCTION TO MINIMIZE SEDIMENT FROM ENTERING THE STORM SEWER SYSTEM.

GRADING AND SEEDING NOTES

- ALL DISTURBED AREAS SHALL BE SEEDED AND MULCHED IMMEDIATELY FOLLOWING GRADING ACTIVITIES. SEED SHALL BE DOT SEED MIXTURE OR SIMILAR LAWN TYPE SEED MIX. MIXTURE SHALL BE APPLIED AT A RATE OF FIVE POUNDS PER ONE-THOUSAND SQUARE FEET.
- ALL PROPOSED GRADES SHOWN ARE FINISHED GRADES. CONTRACTOR SHALL VERIFY ALL GRADES. MAKE SURE ALL AREAS DRAIN PROPERLY AND SHALL REPORT ANY DISCREPANCIES TO THE ENGINEER PRIOR TO CONSTRUCTION.
- CONTRACTOR SHALL WATER ALL NEWLY SEEDDED AREAS DURING THE SUMMER MONTHS WHENEVER THERE IS A 7 DAY LAPSE WITH NO SIGNIFICANT RAINFALL.
- CONTRACTOR TO DEEP TILL ALL COMPACTED PREVIOUS SURFACES PRIOR TO SEEDING AND MULCHING. THIS MUST BE VERIFIED BY THE ENGINEER AS PART OF THE AS-BUILT CERTIFICATION.



File: I:\2006 (fms)\062494.dwg 06/24/14 Civil Design Updated.dwg Layout: GEC - South 20 Scale User: awatkins Plotted: Jul 17, 2013 - 9:11am Xrefs:



LEGEND (PROPOSED)

- PROPERTY LINE
- STORMWATER MANAGEMENT AREA
- WATER MAIN
- HYDRANT
- STORM SEWER
- PROPOSED FENCE LINE
- PHASE I ASPHALT PAVEMENT
- ASPHALT PAVEMENT
- CONCRETE PAVEMENT

- GENERAL NOTES**
- REFER TO THE EXISTING CONDITIONS SURVEY DATED 05-15-2012 FOR EXISTING CONDITIONS NOTES AND LEGEND.
 - ALL WORK IN THE ROW SHALL BE IN ACCORDANCE WITH THE CITY OF MADISON STANDARD SPECIFICATIONS FOR PUBLIC WORKS CONSTRUCTION.
 - JSD SHALL BE HELD HARMLESS AND DOES NOT WARRANT ANY DEVIATIONS BY THE OWNER/CONTRACTOR FROM THE APPROVED CONSTRUCTION PLANS THAT MAY RESULT IN DISCIPLINARY ACTIONS BY ANY OR ALL REGULATORY AGENCIES.
 - DRAWING FOR REVIEW - NOT FOR CONSTRUCTION UNLESS OTHERWISE NOTED IN THE TITLE BLOCK.

- UTILITY NOTES**
- DIMENSIONS TAKE PRECEDENCE OVER SCALE. CONTRACTOR TO VERIFY ALL DIMENSIONS IN FIELD.
 - IF ANY ERRORS, DISCREPANCIES, OR OMISSIONS WITHIN THE PLAN BECOME APPARENT, IT SHALL BE BROUGHT TO THE ATTENTION OF THE ENGINEER PRIOR TO CONSTRUCTION SO THAT CLARIFICATION OR REDESIGN MAY OCCUR.
 - LENGTHS OF ALL UTILITIES ARE TO CENTER OF STRUCTURES OR FITTINGS AND MAY VARY SLIGHTLY FROM PLAN. LENGTHS SHALL BE VERIFIED IN THE FIELD DURING CONSTRUCTION.
 - ALL CONSTRUCTION SIGNING TO BE IN ACCORDANCE WITH THE CITY OF MADISON AND WISCONSIN DEPARTMENT OF TRANSPORTATION REQUIREMENTS.
 - THE CONTRACTOR SHALL INSTALL A PEDESTRIAN FENCE AROUND ALL EXCAVATIONS TO BE LEFT OPEN OVER NIGHT AS REQUIRED.
 - THE PROPOSED IMPROVEMENTS MUST BE CONSTRUCTED IN ACCORDANCE WITH ENGINEERING PLANS DESIGNED TO MEET ORDINANCES AND REQUIREMENTS OF THE MUNICIPALITY AND WISDOT, WSPS, AND WDNR.
 - PRIOR TO CONSTRUCTION, THE CONTRACTOR IS RESPONSIBLE FOR:
 - EXAMINING ALL SITE CONDITIONS RELATIVE TO THE CONDITIONS INDICATED ON THE ENGINEERING DRAWINGS. ANY DISCREPANCIES ARE TO BE REPORTED TO THE ENGINEER AND RESOLVED PRIOR TO THE START OF CONSTRUCTION.
 - OBTAINING ALL PERMITS INCLUDING PERMIT COSTS, TAP FEES, METER DEPOSITS, BONDS, AND ALL OTHER FEES REQUIRED FOR PROPOSED WORK TO OBTAIN OCCUPANCY.
 - VERIFYING UTILITY ELEVATIONS AND NOTIFYING ENGINEER OF ANY DISCREPANCY. NO WORK SHALL BE PERFORMED UNTIL THE DISCREPANCY IS RESOLVED.
 - NOTIFYING ALL UTILITIES PRIOR TO THE INSTALLATION OF ANY UNDERGROUND IMPROVEMENTS.
 - NOTIFYING THE DESIGN ENGINEER AND MUNICIPALITY 48 HOURS PRIOR TO THE START OF CONSTRUCTION TO ARRANGE FOR APPROPRIATE CONSTRUCTION OBSERVATION.
 - THE CONTRACTOR IS RESPONSIBLE FOR PROVIDING THE ENGINEER WITH AS-BUILT CONDITIONS OF THE DESIGNATED IMPROVEMENTS IN ORDER THAT THE APPROPRIATE DRAWINGS CAN BE PREPARED, IF REQUIRED. ANY CHANGES TO THE DRAWINGS OR ADDITIONAL ITEMS MUST BE REPORTED TO THE ENGINEER AS WORK PROGRESSES.

- UTILITY NOTES (CONTD)**
- THE PRIME CONTRACTOR IS RESPONSIBLE FOR COORDINATING ALL CONSTRUCTION WITH OTHER CONTRACTORS INVOLVED WITH CONSTRUCTION OF THE PROPOSED DEVELOPMENT AND FOR REPORTING ANY ERRORS OR DISCREPANCIES BETWEEN THESE PLANS AND PLANS PREPARED BY OTHERS.
 - ANY SANITARY SEWER, SANITARY SEWER SERVICES, WATER MAIN, WATER SERVICES, STORM SEWER, OR OTHER UTILITIES, WHICH ARE DAMAGED BY THE CONTRACTORS, SHALL BE REPAIRED TO THE OWNER'S SATISFACTION AT THE CONTRACTOR'S EXPENSE.
 - CONTRACTOR IS RESPONSIBLE FOR SITE SAFETY DURING THE CONSTRUCTION OF IMPROVEMENTS.
 - CONTRACTOR SHALL NOTIFY THE CITY OF MADISON PUBLIC WORKS DEPARTMENT A MINIMUM OF 48 HOURS BEFORE CONNECTING TO PUBLIC UTILITIES.
 - WATER SERVICE SHALL BE MAINTAINED AT ALL TIMES DURING CONSTRUCTION. CONTRACTOR TO FIELD VERIFY LOCATION AND SIZE. REPORT DISCREPANCIES TO ENGINEER PRIOR TO CONSTRUCTION. CONSTRUCTION TO BE IN ACCORDANCE WITH THE CITY OF SUN PRAIRIE STANDARD SPECIFICATIONS FOR PUBLIC WORKS IMPROVEMENTS.
 - DEWATERING, IF APPLICABLE, SHALL BE CONDUCTED PER WDNR STORM WATER MANAGEMENT TECHNICAL STANDARD 1061.
 - ALL WORK WITHIN THE RIGHT-OF-WAY SHALL BE INSTALLED PER RACINE COUNTY STANDARD SPECIFICATIONS FOR PUBLIC WORKS IMPROVEMENTS.

PROPOSED STORMSEWER STRUCTURES SCHEDULE

LABEL	INVERT ELEV. (FT)	RIM ELEV. (FT)	DEPTH (FT)	STRUCTURE DESCRIPTION	GRATE
STM.MH.NO. 1	849.50	851.50	2.00	24" DIA MANHOLE	R-4200-24 FLAT BAR DRAINAGE GRATE

PROPOSED STORMSEWER PIPE SCHEDULE

PIPE LABEL	FROM	TO	LENGTH (FT)	INVERT ELEVATION (FT)	DISCHARGE ELEVATION (FT)	SLOPE (%)	PIPE SIZE & TYPE
P-1	SOUTH OF DRIVE	NORTH OF DRIVE	75	852.38	852.00	0.51%	10" CIP

File: I:\2006 (rm) 062494.dwg 06/24/06 Civil Design Updated.dwg Layout: Utility - North, 20 Scale User: awackins Plotted: Jul 17, 2013 - 9:11am Xref's:

- CIVIL ENGINEERING
- SURVEYING & MAPPING
- CONSTRUCTION SERVICES
- WATER RESOURCES
- PLANNING & DEVELOPMENT
- TRANSPORTATION ENGINEERING
- STRUCTURAL ENGINEERING
- LANDSCAPE ARCHITECTURE

MADISON REGIONAL OFFICE
 161 HORIZON DRIVE, SUITE 101
 VERONA, WISCONSIN 53593
 608.848.5060 PHONE | 608.848.2255 FAX
 MADISON | MILWAUKEE
 KENOSHA | APPLETON
 www.jsdinc.com

SERVICES PROVIDED TO:
MADISON COLLEGE

PROJECT:
**MADISON COLLEGE
 FIRE TRAINING
 FACILITY**

PROJECT LOCATION:
 MADISON
 DANE COUNTY, WI

JSD PROJECT NO.:

SEAL/SIGNATURE:

ALTHOUGH EVERY EFFORT HAS BEEN MADE IN PREPARING THESE PLANS AND CHECKING THEM FOR ACCURACY, THE CONTRACTOR AND SUBCONTRACTORS MUST CHECK ALL DETAIL AND DIMENSIONS OF THEIR TRADE AND BE RESPONSIBLE FOR THE SAME.

DESIGN: JLF 08-28-11
 DRAWN: AJW 07-15-13
 APPROVED: WPW

PLAN MODIFICATIONS: DATE:
 CITY OF MADISON 06-03-13



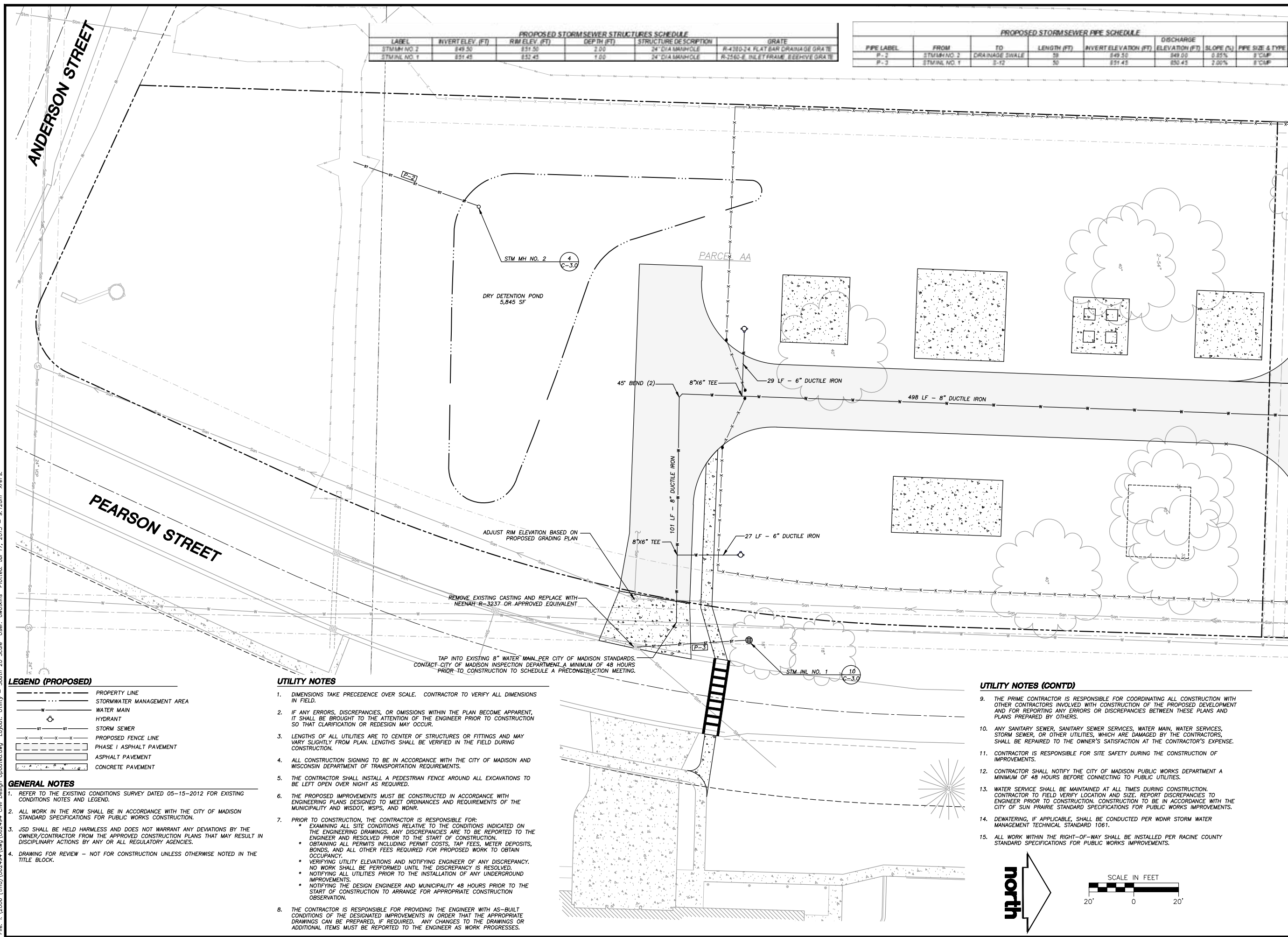
Toll Free (800) 242-8511
 Milwaukee Area (414) 259-1181
 Hearing Impaired TDD (800) 542-2289
 www.DiggersHotline.com

SHEET TITLE:
**UTILITY PLAN -
 SOUTH LOT**

SHEET NUMBER:
C-3.1

PROPOSED STORMSEWER STRUCTURES SCHEDULE					
LABEL	INVERT ELEV. (FT)	RIM ELEV. (FT)	DEPTH (FT)	STRUCTURE DESCRIPTION	GRATE
STM/MH NO. 2	849.50	851.50	2.00	24" DIA MANHOLE	R-4280-24 FLAT BAR DRAINAGE GRATE
STM/MH NO. 1	851.45	852.45	1.00	24" DIA MANHOLE	R-2560-E DILEYFRAME BEEHIVE GRATE

PROPOSED STORMSEWER PIPE SCHEDULE							
PIPE LABEL	FROM	TO	LENGTH (FT)	INVERT ELEVATION (FT)	DISCHARGE ELEVATION (FT)	SLOPE (%)	PIPE SIZE & TYPE
P-2	STM/MH NO. 2	DRAINAGE SWALE	59	849.50	849.00	0.59%	8" CIP
P-3	STM/MH NO. 1	S-12	50	851.45	850.45	2.00%	8" CIP



LEGEND (PROPOSED)

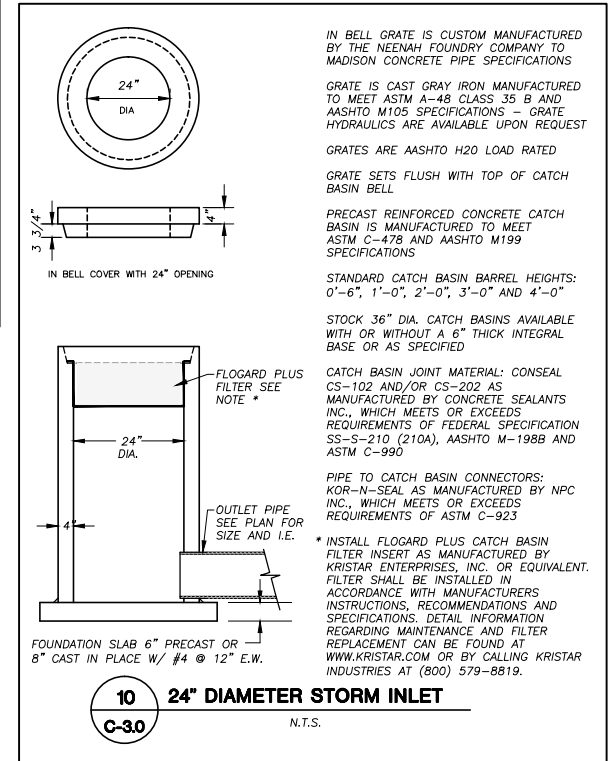
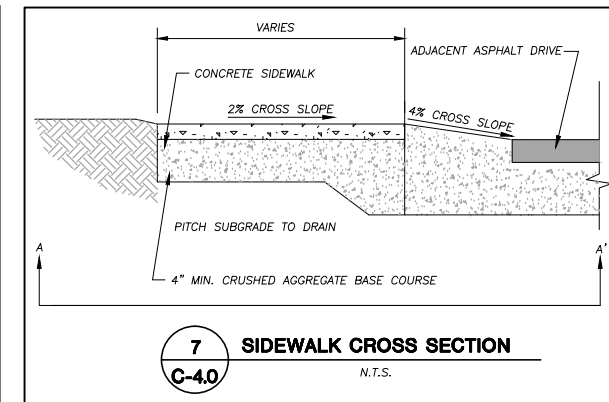
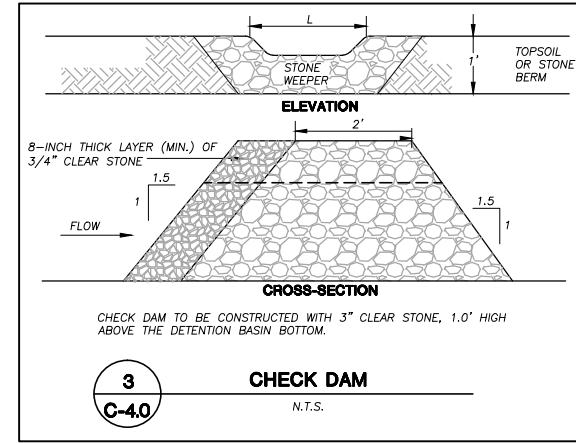
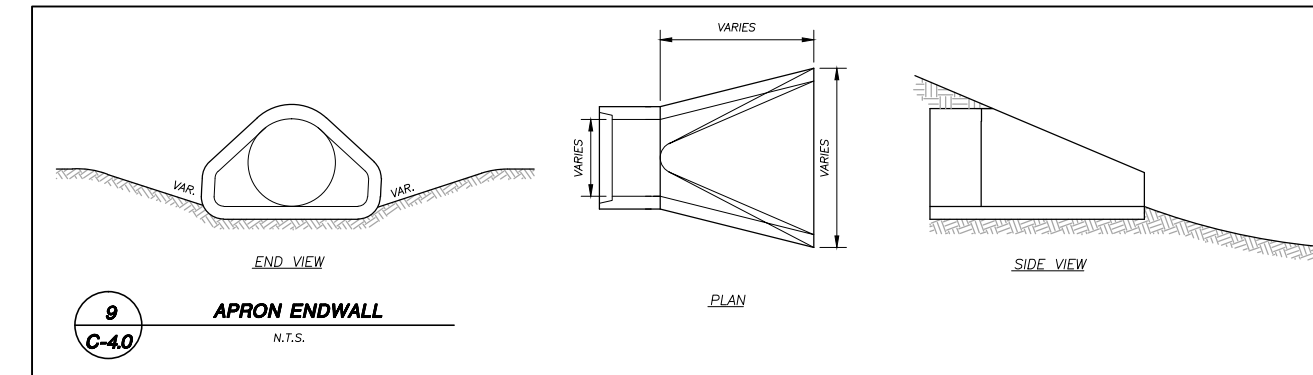
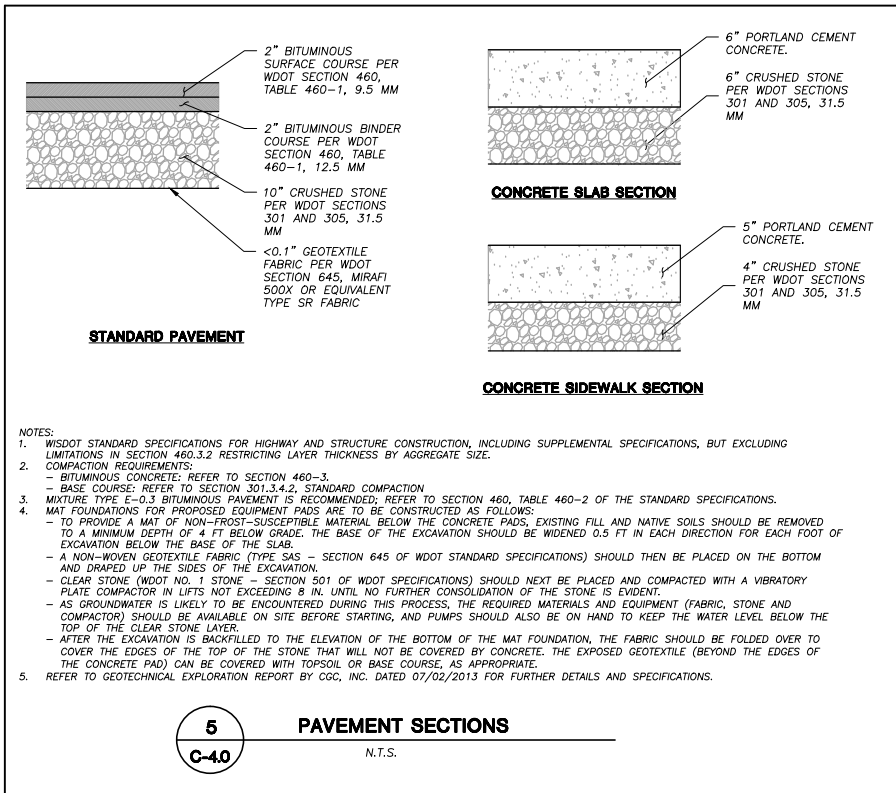
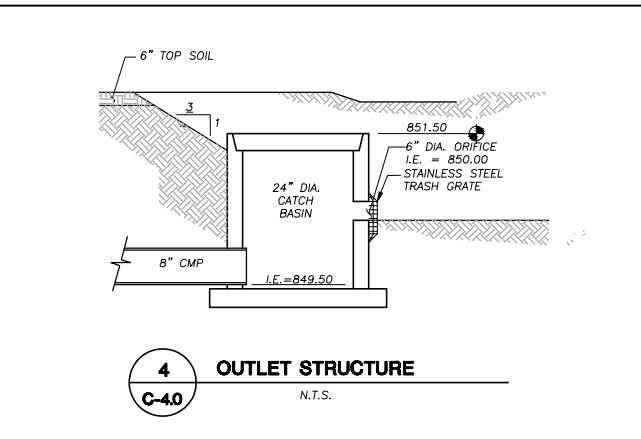
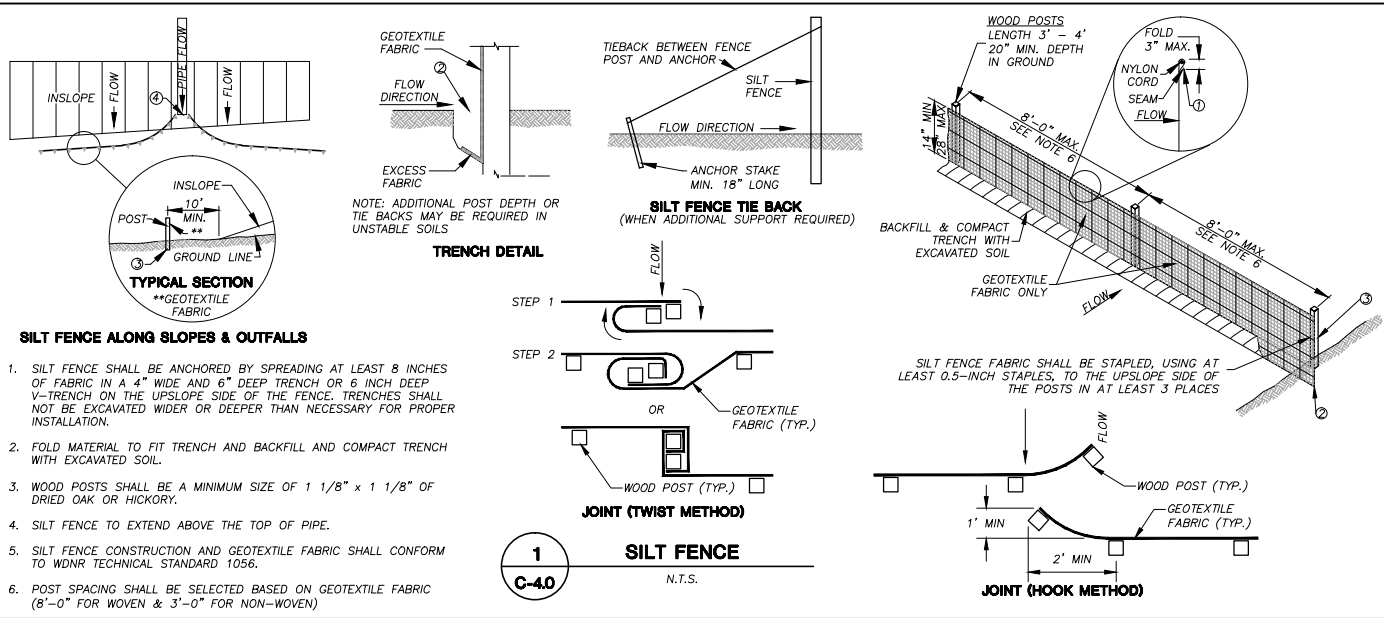
---	PROPERTY LINE
- - - -	STORMWATER MANAGEMENT AREA
---	WATER MAIN
○	HYDRANT
ST	STORM SEWER
- x - x - x -	PROPOSED FENCE LINE
---	PHASE I ASPHALT PAVEMENT
---	ASPHALT PAVEMENT
---	CONCRETE PAVEMENT

- GENERAL NOTES**
- REFER TO THE EXISTING CONDITIONS SURVEY DATED 05-15-2012 FOR EXISTING CONDITIONS NOTES AND LEGEND.
 - ALL WORK IN THE ROW SHALL BE IN ACCORDANCE WITH THE CITY OF MADISON STANDARD SPECIFICATIONS FOR PUBLIC WORKS CONSTRUCTION.
 - JSD SHALL BE HELD HARMLESS AND DOES NOT WARRANT ANY DEVIATIONS BY THE OWNER/CONTRACTOR FROM THE APPROVED CONSTRUCTION PLANS THAT MAY RESULT IN DISCIPLINARY ACTIONS BY ANY OR ALL REGULATORY AGENCIES.
 - DRAWING FOR REVIEW - NOT FOR CONSTRUCTION UNLESS OTHERWISE NOTED IN THE TITLE BLOCK.

- UTILITY NOTES**
- DIMENSIONS TAKE PRECEDENCE OVER SCALE. CONTRACTOR TO VERIFY ALL DIMENSIONS IN FIELD.
 - IF ANY ERRORS, DISCREPANCIES, OR OMISSIONS WITHIN THE PLAN BECOME APPARENT, IT SHALL BE BROUGHT TO THE ATTENTION OF THE ENGINEER PRIOR TO CONSTRUCTION SO THAT CLARIFICATION OR REDESIGN MAY OCCUR.
 - LENGTHS OF ALL UTILITIES ARE TO CENTER OF STRUCTURES OR FITTINGS AND MAY VARY SLIGHTLY FROM PLAN. LENGTHS SHALL BE VERIFIED IN THE FIELD DURING CONSTRUCTION.
 - ALL CONSTRUCTION SIGNING TO BE IN ACCORDANCE WITH THE CITY OF MADISON AND WISCONSIN DEPARTMENT OF TRANSPORTATION REQUIREMENTS.
 - THE CONTRACTOR SHALL INSTALL A PEDESTRIAN FENCE AROUND ALL EXCAVATIONS TO BE LEFT OPEN OVER NIGHT AS REQUIRED.
 - THE PROPOSED IMPROVEMENTS MUST BE CONSTRUCTED IN ACCORDANCE WITH ENGINEERING PLANS DESIGNED TO MEET ORDINANCES AND REQUIREMENTS OF THE MUNICIPALITY AND WISCONSIN DEPARTMENT OF TRANSPORTATION.
 - PRIOR TO CONSTRUCTION, THE CONTRACTOR IS RESPONSIBLE FOR:
 - EXAMINING ALL SITE CONDITIONS RELATIVE TO THE CONDITIONS INDICATED ON THE ENGINEERING DRAWINGS. ANY DISCREPANCIES ARE TO BE REPORTED TO THE ENGINEER AND RESOLVED PRIOR TO THE START OF CONSTRUCTION.
 - OBTAINING ALL PERMITS INCLUDING PERMIT COSTS, TAP FEES, METER DEPOSITS, BONDS, AND ALL OTHER FEES REQUIRED FOR PROPOSED WORK TO OBTAIN OCCUPANCY.
 - VERIFYING UTILITY ELEVATIONS AND NOTIFYING ENGINEER OF ANY DISCREPANCY. NO WORK SHALL BE PERFORMED UNTIL THE DISCREPANCY IS RESOLVED.
 - NOTIFYING ALL UTILITIES PRIOR TO THE INSTALLATION OF ANY UNDERGROUND IMPROVEMENTS.
 - NOTIFYING THE DESIGN ENGINEER AND MUNICIPALITY 48 HOURS PRIOR TO THE START OF CONSTRUCTION TO ARRANGE FOR APPROPRIATE CONSTRUCTION OBSERVATION.
 - THE CONTRACTOR IS RESPONSIBLE FOR PROVIDING THE ENGINEER WITH AS-BUILT CONDITIONS OF THE DESIGNATED IMPROVEMENTS IN ORDER THAT THE APPROPRIATE DRAWINGS CAN BE PREPARED. IF REQUIRED, ANY CHANGES TO THE DRAWINGS OR ADDITIONAL ITEMS MUST BE REPORTED TO THE ENGINEER AS WORK PROGRESSES.

- UTILITY NOTES (CONTD)**
- THE PRIME CONTRACTOR IS RESPONSIBLE FOR COORDINATING ALL CONSTRUCTION WITH OTHER CONTRACTORS INVOLVED WITH CONSTRUCTION OF THE PROPOSED DEVELOPMENT AND FOR REPORTING ANY ERRORS OR DISCREPANCIES BETWEEN THESE PLANS AND PLANS PREPARED BY OTHERS.
 - ANY SANITARY SEWER, SANITARY SEWER SERVICES, WATER MAIN, WATER SERVICES, STORM SEWER, OR OTHER UTILITIES, WHICH ARE DAMAGED BY THE CONTRACTORS, SHALL BE REPAIRED TO THE OWNER'S SATISFACTION AT THE CONTRACTOR'S EXPENSE.
 - CONTRACTOR IS RESPONSIBLE FOR SITE SAFETY DURING THE CONSTRUCTION OF IMPROVEMENTS.
 - CONTRACTOR SHALL NOTIFY THE CITY OF MADISON PUBLIC WORKS DEPARTMENT A MINIMUM OF 48 HOURS BEFORE CONNECTING TO PUBLIC UTILITIES.
 - WATER SERVICE SHALL BE MAINTAINED AT ALL TIMES DURING CONSTRUCTION. CONTRACTOR TO FIELD VERIFY LOCATION AND SIZE. REPORT DISCREPANCIES TO ENGINEER PRIOR TO CONSTRUCTION. CONSTRUCTION TO BE IN ACCORDANCE WITH THE CITY OF SUN PRAIRIE STANDARD SPECIFICATIONS FOR PUBLIC WORKS IMPROVEMENTS.
 - DEWATERING, IF APPLICABLE, SHALL BE CONDUCTED PER WDNR STORM WATER MANAGEMENT TECHNICAL STANDARD 1061.
 - ALL WORK WITHIN THE RIGHT-OF-WAY SHALL BE INSTALLED PER RACINE COUNTY STANDARD SPECIFICATIONS FOR PUBLIC WORKS IMPROVEMENTS.

File: I:\2006 (rmj)\062494.dwg 06/24/06 Civil Design Updated.dwg Layout: Utility - South 20 Scale User: awatkins Plotted: Jul 17, 2013 - 9:12am Xrefs:



JSD Professional Services, Inc.
Engineers • Surveyors • Planners

"BUILDING RELATIONSHIPS WITH A COMMITMENT TO CLIENT SATISFACTION THROUGH TRUST, QUALITY AND EXPERIENCE"

- CIVIL ENGINEERING
- SURVEYING & MAPPING
- CONSTRUCTION SERVICES
- WATER RESOURCES
- PLANNING & DEVELOPMENT
- TRANSPORTATION ENGINEERING
- STRUCTURAL ENGINEERING
- LANDSCAPE ARCHITECTURE

MADISON REGIONAL OFFICE
161 HORIZON DRIVE, SUITE 101
VERONA, WISCONSIN 53593
608.848.5060 PHONE | 608.848.2255 FAX

MADISON | MILWAUKEE
KENOSHA | APPLETON

www.jsdinc.com

SERVICES PROVIDED TO:
MADISON COLLEGE

PROJECT:
**MADISON COLLEGE
FIRE TRAINING
FACILITY**

PROJECT LOCATION:
MADISON
DANE COUNTY, WI

JSD PROJECT NO.:

SEAL/SIGNATURE:

ALTHOUGH EVERY EFFORT HAS BEEN MADE IN PREPARING THESE PLANS AND CHECKING THEM FOR ACCURACY, THE CONTRACTOR AND SUBCONTRACTORS MUST CHECK ALL DETAIL AND DIMENSIONS OF THEIR TRADE AND BE RESPONSIBLE FOR THE SAME.

DESIGN: JLF 08-28-11
DRAWN: AJW 07-15-13
APPROVED: WPW

PLAN MODIFICATIONS:	DATE:
UDC SUBMITTAL - INFORMATIONAL	06-05-13
UDC SUBMITTAL - FINAL APPROVAL	07-17-13

DIGGERS HOTLINE

Toll Free (800) 242-8511
Milwaukee Area (414) 259-1181
Hearing Impaired TDD (800) 542-2289
www.DiggersHotline.com

SHEET TITLE:

DETAILS

SHEET NUMBER:

C-4.0

- CIVIL ENGINEERING
- SURVEYING & MAPPING
- CONSTRUCTION SERVICES
- WATER RESOURCES
- PLANNING & DEVELOPMENT
- TRANSPORTATION ENGINEERING
- STRUCTURAL ENGINEERING
- LANDSCAPE ARCHITECTURE

MADISON REGIONAL OFFICE
 161 HORIZON DRIVE, SUITE 101
 VERONA, WISCONSIN 53593
 608.848.5060 PHONE | 608.848.2255 FAX

MADISON | MILWAUKEE
 KENOSHA | APPLETON
www.jsdinc.com

SERVICES PROVIDED TO:
MADISON COLLEGE

PROJECT:
**MADISON COLLEGE
 FIRE TRAINING
 FACILITY**

PROJECT LOCATION:
 MADISON
 DANE COUNTY, WI

JSD PROJECT NO.:

SEAL/SIGNATURE:

ALTHOUGH EVERY EFFORT HAS BEEN MADE IN PREPARING THESE PLANS AND CHECKING THEM FOR ACCURACY, THE CONTRACTOR AND SUBCONTRACTORS MUST CHECK ALL DETAIL AND DIMENSIONS OF THEIR TRADE AND BE RESPONSIBLE FOR THE SAME.

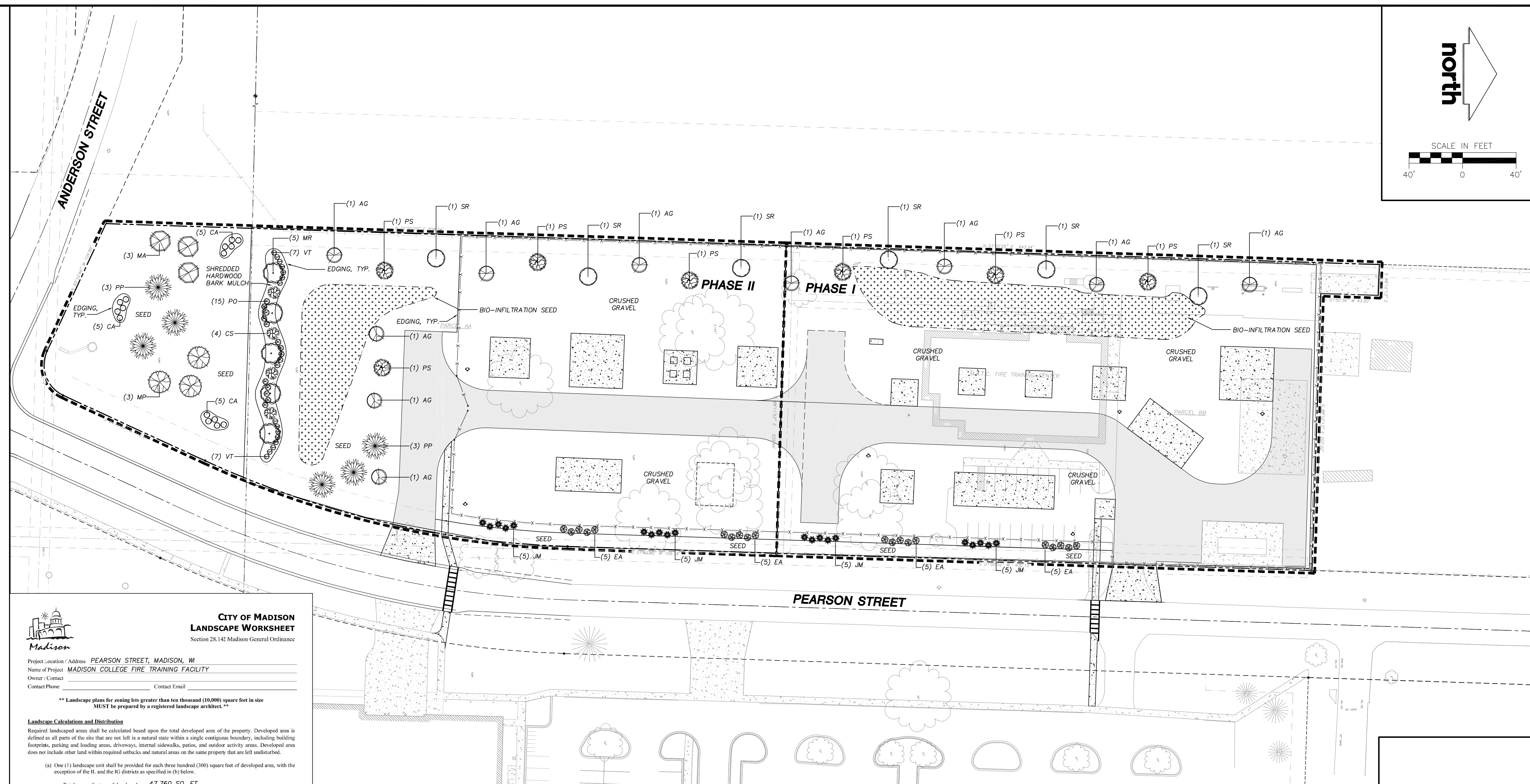
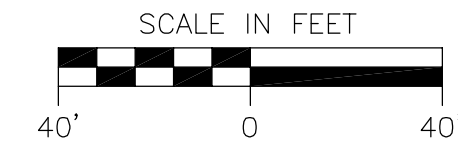
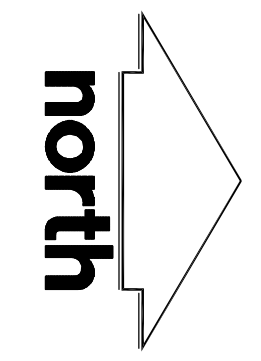
DESIGN: JLF 08-26-11
 DRAWN: JLF 06-03-13
 APPROVED:

PLAN MODIFICATIONS:	DATE:
UDC SUBMITTAL - INFORMATIONAL	06-05-13
UDC SUBMITTAL - FINAL APPROVAL	07-17-13

DIGGERS HOTLINE
 Toll Free (800) 242-8511
 Milwaukee Area (414) 258-1181
 Hearing Impaired TDD (800) 542-2289
www.DiggersHotline.com

SHEET TITLE:
LANDSCAPE PLAN

SHEET NUMBER:
L-1.0



**CITY OF MADISON
 LANDSCAPE WORKSHEET**
 Section 28.142 Madison General Ordinance

Project Location / Address: PEARSON STREET, MADISON, WI
 Name of Project: MADISON COLLEGE FIRE TRAINING FACILITY
 Owner / Contact: _____
 Contact Phone: _____ Contact Email: _____

** Landscape plans for zoning lots greater than ten thousand (10,000) square feet in size MUST be prepared by a registered landscape architect. **

Landscape Calculations and Distribution
 Required landscaped areas shall be calculated based upon the total developed area of the property. Developed area is defined as all parts of the site that are not left in a natural state within a single contiguous boundary, including building footprints, parking and loading areas, driveways, internal sidewalks, patios, and outdoor activity areas. Developed area does not include other land within required setbacks and natural areas on the same property that are left undisturbed.

- (a) One (1) landscape unit shall be provided for each three hundred (300) square feet of developed area, with the exception of the IL and IG districts as specified in (b) below.
 Total square footage of developed area **47,760 SQ. FT.**
 Developed area divided by three hundred (300) square feet = **159.00 Landscape Units**
- (b) Within the Industrial - Limited (IL) and Industrial - General (IG) districts, one (1) landscape unit shall be provided for every six hundred (600) square feet of developed area.
 Total square footage of developed area _____
 Developed area divided by six hundred (600) square feet = _____ Landscape Units
- (c) One landscape unit consists of five (5) landscape points. Landscape points are calculated as shown in the following table.
 Landscape units multiplied by five (5) landscape points = **795.00 Total Points Required**

Tabulation of Points and Credits
 Use the table to indicate the quantity and points for all existing and proposed landscape elements. Calculations yielding a fraction up to one-half (1/2 or 0.5) shall be rounded down to the nearest whole number; fractions of more than one-half (1/2) shall be rounded up.

Plant Type/Element	Minimum Size at Installation	Points	Credits/Existing Landscaping		New/Proposed Landscaping	
			Quantity	Points Achieved	Quantity	Points Achieved
Overstory deciduous tree	2 1/2 inch caliper	35			0	0
Ornamental tree	1 1/2 inch caliper	15			34	510
Evergreen tree	3 feet tall	15			6	90
Shrub, deciduous	18" or 3 gallon container size	2			54	108
Shrub, evergreen	18" or 3 gallon container size	3			20	60
Ornamental grasses	18" or 3 gallon container size	2			15	30
Ornamental/decorative fencing or wall	n/a	4 per 10 lineal ft.				
Sub Totals						798

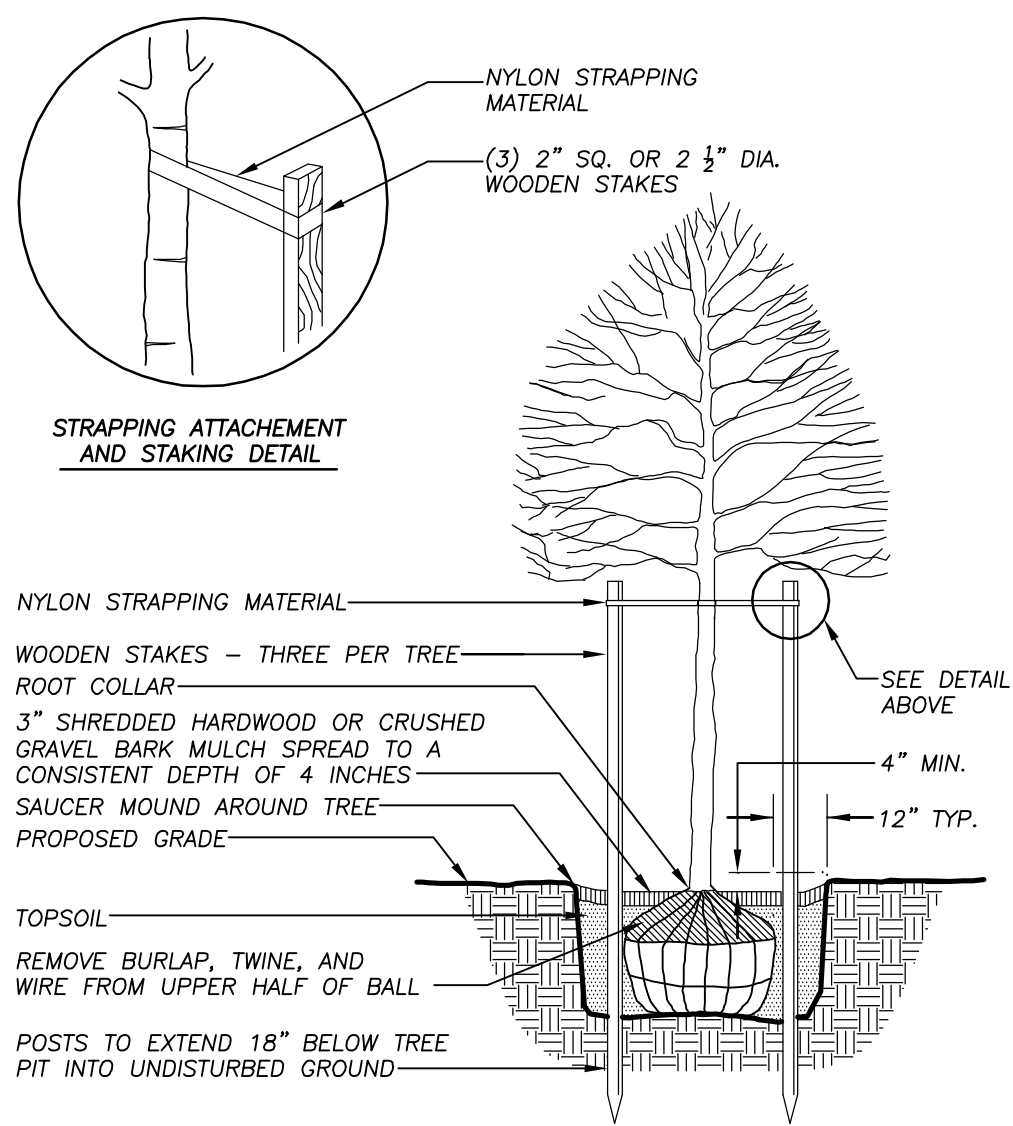
Total Number of Points Provided **798**

SYM	QTY.	COMMON NAME	BOTANICAL NAME	SIZE	ROOT	POINTS	TOTAL POINTS
LOW DECIDUOUS TREES							
AG	10	Autumn Brilliance Serviceberry	AMELANCHIER x grandiflora 'Autumn Brilliance'	1 1/2" Cal.	B&B	15	150
MA	3	Adams Crabapple	MALUS 'Adams'	1 1/2" Cal.	B&B	15	45
MP	3	Prairiefire Crabapple	MALUS 'Prairiefire'	1 1/2" Cal.	B&B	15	45
MR	5	Red Baron Crabapple	MALUS 'Red Baron'	1 1/2" Cal.	B&B	15	75
PS	7	Spring Wonder Cherry	PRUNUS sargentii 'Hokkaido Normandale'	1 1/2" Cal.	B&B	15	105
SR	6	Ivory Silk Japanese Tree Lilac	SYRINGA reticulata 'Ivory Silk'	1 1/2" Cal.	B&B	15	90
LOW EVERGREEN TREES							
PP	6	Fat Albert Colorado Blue Spruce	PICEA pungens 'Fat Albert'	4'Ht.	B&B	15	90
MEDIUM EVERGREEN SHRUBS							
MJ	20	Mountain Juniper	JUNIPERUS chinensis 'Mountain'	48" Min Ht.	# 3 Cont.	3	60
LARGE DECIDUOUS SHRUBS							
CS	4	Redosier Dogwood	CORNUS sericea	24-30" Min. Ht.	# 3 Cont.	2	8
EA	20	Chicago Fire Burning Bush	EUONYMUS alatus 'Timber Creek'	24-30" Min. Ht.	# 3 Cont.	2	40
PO	15	Dwarf Common Ninebark	PHYSOCARPUS oppulifolius 'Nana'	24-30" Min. Ht.	# 3 Cont.	2	30
VT	15	Spring Red Compact Cranberrybush Vib.	VIBURNUM trilobum 'Spring Red'	24-30" Min. Ht.	# 3 Cont.	2	30
ORNAMENTAL GRASSES							
CA	15	Karl Foerster Feather Reed Grass	CALAMAGROSTIS x acutiflora 'Karl Foerster'	10 - 12"Ht.	# 1 Cont.	2	30
						TOTAL:	798

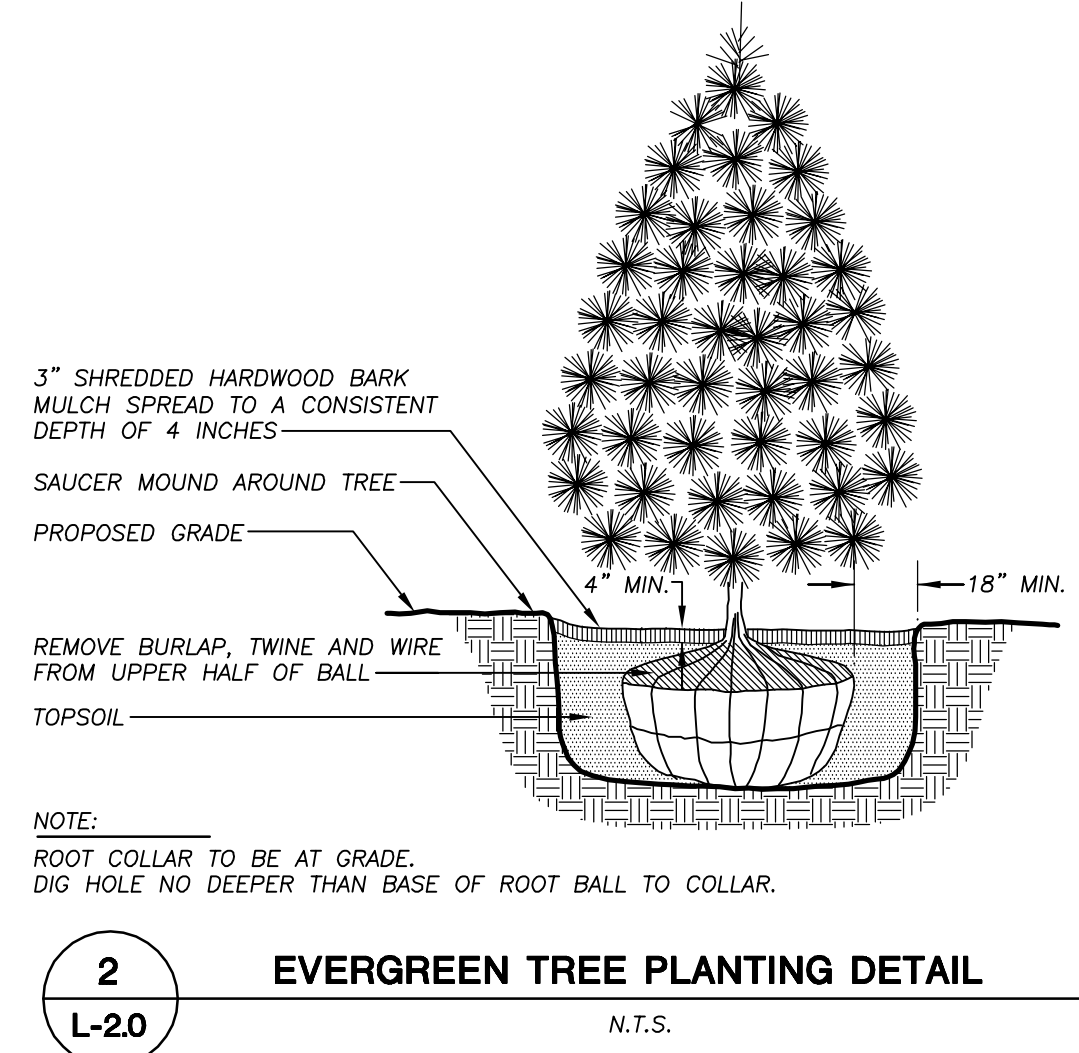
- GENERAL NOTES**
- ALL WORK IN THE ROW AND/OR PUBLIC EASEMENTS SHALL BE IN ACCORDANCE WITH THE CITY OF MADISON STANDARD SPECIFICATIONS FOR PUBLIC WORKS CONSTRUCTION.
 - JSD SHALL BE HELD HARMLESS AND DOES NOT WARRANT ANY DEVIATIONS BY THE OWNER/CONTRACTOR FROM THE APPROVED CONSTRUCTION PLANS THAT MAY RESULT IN DISCIPLINARY ACTIONS BY ANY OR ALL REGULATORY AGENCIES.
 - DRAWING FOR REVIEW - NOT FOR CONSTRUCTION UNLESS OTHERWISE NOTED IN THE TITLE BLOCK.
 - FOR ALL OTHER LANDSCAPE NOTES AND SPECIFICATIONS PLEASE SEE LANDSCAPE DETAILS AND SPECIFICATIONS SHEET L-2.0.

LEGEND (PROPOSED)

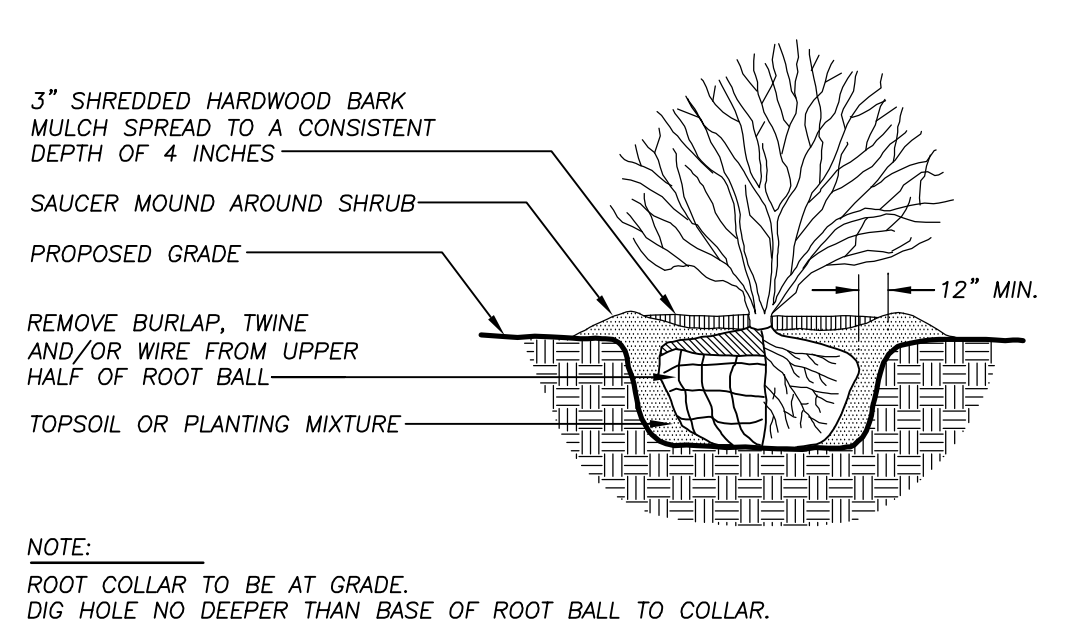
- PROPERTY LINE
- - - PROPOSED FENCE LINE
- ▬ ASPHALT PAVEMENT
- ▬ CONCRETE PAVEMENT
- ▬ STORMWATER SEEDED AREA
- ▬ 18" CURB AND GUTTER
- ▬ 18" REJECT CURB AND GUTTER
- PHASE I, II EXTENTS
- LOW DECIDUOUS TREES
- LOW EVERGREEN TREES
- MEDIUM EVERGREEN SHRUBS
- LARGE DECIDUOUS SHRUBS
- ORNAMENTAL GRASSES



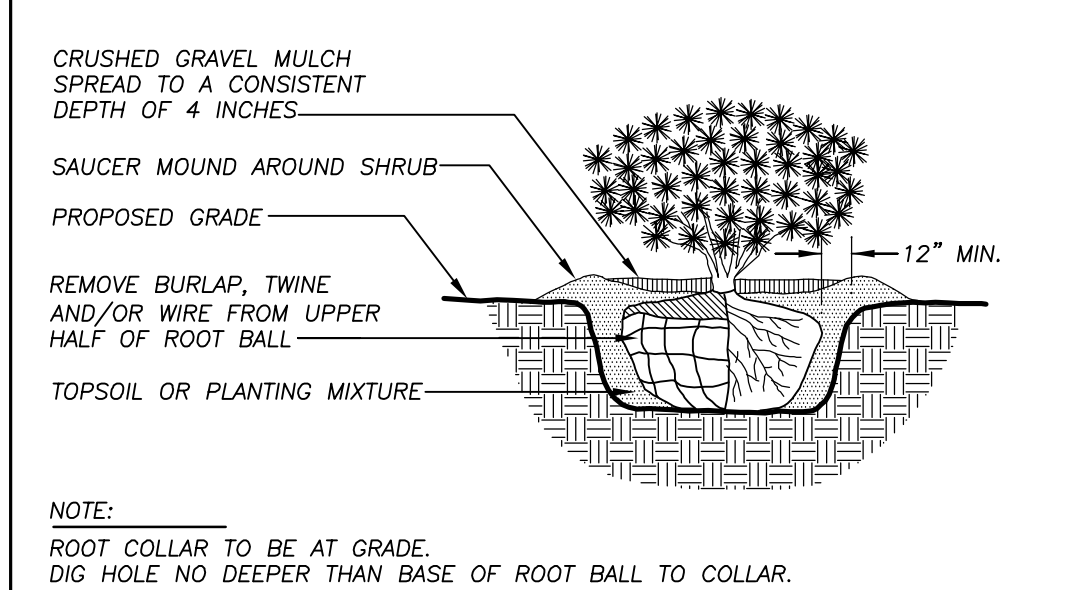
1 DECIDUOUS TREE PLANTING DETAIL
N.T.S.



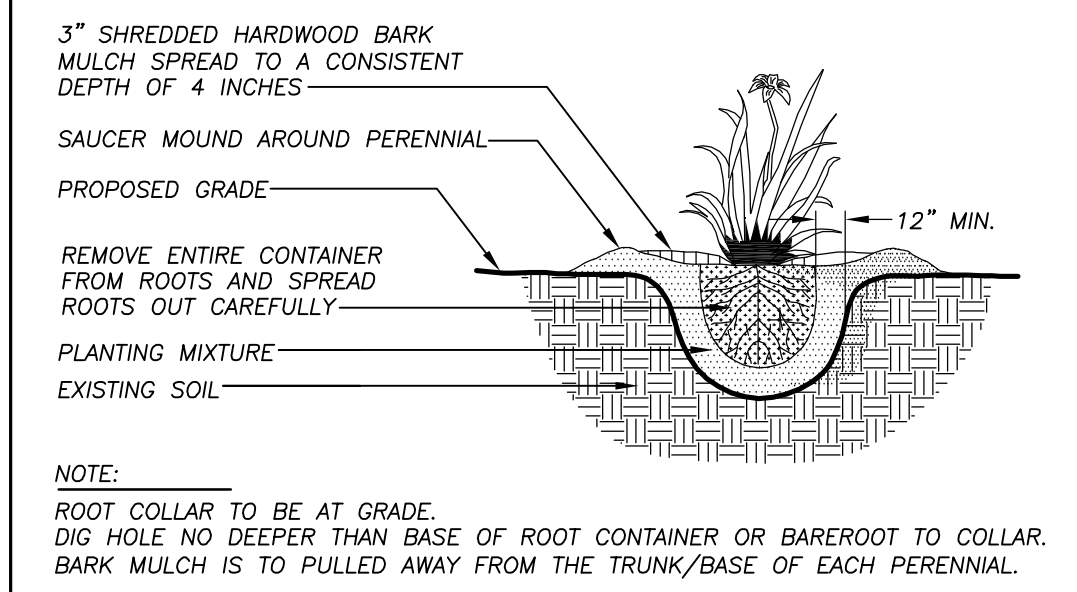
2 EVERGREEN TREE PLANTING DETAIL
N.T.S.



3 DECIDUOUS SHRUB PLANTING DETAIL
N.T.S.



4 EVERGREEN SHRUB PLANTING DETAIL
N.T.S.



5 ORNAMENTAL GRASS PLANTING DETAIL
N.T.S.

LANDSCAPE NOTES & SPECIFICATIONS

- GENERAL: ALL WORK IN THE R-O-W AND PUBLIC EASEMENTS SHALL BE IN ACCORDANCE WITH THE CITY OF MADISON REQUIREMENTS. JSD SHALL BE HELD HARMLESS AND DOES NOT WARRANT ANY DEVIATIONS BY THE OWNER/CONTRACTOR FROM THE APPROVED CONSTRUCTION PLANS THAT MAY RESULT IN DISCIPLINARY ACTIONS BY ANY OR ALL REGULATORY AGENCIES. LOCATE ALL UTILITIES PRIOR TO CONSTRUCTION. THE CONTRACTOR IS RESPONSIBLE FOR REPAIRING ANY DAMAGE DONE TO UTILITIES. CONTRACTOR MUST CALL 1-800-382-5544 FOR UTILITY LOCATIONS AT LEAST THREE DAYS PRIOR TO DIGGING. HAND DIG AND INSTALL ALL PLANTS THAT ARE NEAR EXISTING UTILITIES. PROTECT PREVIOUSLY INSTALLED WORK OF OTHER TRADES. CONTRACTOR IS RESPONSIBLE FOR STAKING THE PLANT MATERIALS FOR REVIEW BY OWNER PRIOR TO DIGGING AND PLACEMENT. THE LANDSCAPE CONTRACTOR SHALL COORDINATE ALL FINE GRADING AND RESTORATION WITH THE GRADING CONTRACTOR.
- DELIVERY AND HANDLING: DO NOT DELIVER MORE PLANT MATERIALS THAN CAN BE PLANTED IN ONE DAY. DELIVER PLANTS WITH LEGIBLE IDENTIFICATION LABELS. PROTECT PLANTS DURING DELIVERY AND DO NOT PRUNE PRIOR TO DELIVERY. ALL TREES AND SHRUBS SHALL BE PLANTED ON THE DAY OF DELIVERY; IF THIS IS NOT POSSIBLE, PROTECT THAT STOCK NOT PLANTED BY STORING STOCK IN A SHADED AREA PROTECTING THE ROOT MASS WITH WET SOIL, MOSS OR OTHER SUITABLE MEDIA AND KEEPING WELL WATERED. DO NOT REMOVE CONTAINER GROWN STOCK FROM CONTAINERS BEFORE TIME OF PLANTING. DO NOT PICK UP CONTAINER OR BALLED PLANTS BY STEM OR ROOTS. ALL PLANTS SHALL BE LIFTED AND HANDLED FROM THE BOTTOM OF THE BALL. PERFORM ACTUAL PLANTING ONLY WHEN WEATHER AND SOIL CONDITIONS ARE SUITABLE IN ACCORDANCE WITH LOCALLY ACCEPTED PRACTICES.
- GUARANTEE: THE CONTRACTOR SHALL GUARANTEE ALL PLANTS THROUGH ONE (1) YEAR AFTER ACCEPTANCE BY OWNER. PLANTS SHALL BE ALIVE AND IN GOOD HEALTHY AND FLOURISHING CONDITION AT THE END OF THE GUARANTEE PERIOD. THE CONTRACTOR SHALL REPLACE WITHOUT COST TO THE OWNER ANY PLANTS THAT ARE DEAD OR NOT IN A VIGOROUS THRIVING CONDITION. REPLACEMENT PLANTS SHALL BE OF THE SAME KIND AND SIZE AS ORIGINALLY SPECIFIED UNLESS OTHERWISE DIRECTED BY OWNER. RESTORE BEDS AS NECESSARY FOLLOWING PLANT REPLACEMENT, INCLUDING BUT NOT LIMITED TO BEDS, EDGING, MULCH, GRASS, ETC. REPAIR DAMAGE TO OTHER PLANTS OR LAWNS DURING PLANT REPLACEMENT AT NO COST TO OWNER. CONTRACTOR SHALL PROVIDE A TWO (2)-YEAR STRAIGHTENING GUARANTEE FOR ALL TREES.
- MATERIALS - PLANTS: ALL PLANTS SHALL CONFORM TO THE AMERICAN STANDARD FOR NURSERY STOCK ANSI Z60.1-2004. PLANTS SHALL BE TRUE TO SPECIES AND VARIETY SPECIFIED AND NURSERY GROWN IN ACCORDANCE WITH GOOD HORTICULTURAL PRACTICES UNDER CLIMATIC CONDITIONS SIMILAR TO THOSE IN THE LOCALITY OF THE PROJECT FOR AT LEAST 2 YEARS. PLANTS SHALL BE FRESHLY DUG (DURING THE MOST RECENT FAVORABLE HARVEST SEASON). PLANTS SHALL BE SO TRAINED IN DEVELOPMENT AND APPEARANCE AS TO BE UNQUESTIONABLY SUPERIOR IN FORM, COMPACTNESS, AND SYMMETRY. PLANTS SHALL BE SOUND, HEALTHY, VIGOROUS, WELL BRANCHED AND DENSELY FOLIATED WHEN IN LEAF, AND FREE OF DISEASE AND INSECTS (ADULT EGGS, PUPAE OR LARVAE). THEY SHALL HAVE HEALTHY, WELL-DEVELOPED ROOT SYSTEMS AND SHALL BE FREE FROM PHYSICAL DAMAGE OR OTHER CONDITIONS THAT WOULD PREVENT GROWTH. PLANTS SHALL BE OF THE HIGHEST QUALITY, HAVE TYPICAL GROWTH HABITS FOR THEIR SPECIES, BE SOUND, HEALTHY, VIGOROUS AND FREE OF INJURY. PARKWAY TREES AND PARKING LOT TREES SHALL HAVE A MINIMUM BRANCHING HEIGHT OF SIX (6) FEET ABOVE THE GROUND TO ALLOW ADEQUATE VISUAL AND PHYSICAL CLEARANCE.
- CONTRACTOR IS RESPONSIBLE FOR STAKING OF ALL LANDSCAPE MATERIALS AND PLANT LOCATIONS PRIOR TO DIGGING FOR REVIEW BY OWNER OR OWNER'S A/E REPRESENTATIVE.
- MATERIALS - SOIL: PLANTING SOIL/COMPACTED TOPSOIL SHALL MEET THESE REQUIREMENTS:
 - SEEDED AREAS = 7"
 - PLANTED AREAS AND PARKING ISLANDS = 20"
 PLANTING SOIL TO BE A MINIMUM 7" DEPTH, UNLESS OTHERWISE SPECIFIED AS ABOVE OR ON DETAILS. TOPSOIL TO BE CLEAN, FRIABLE LOAM FROM LOCAL SOURCE, FREE FROM STONES OR DEBRIS OVER 3/4" IN DIAMETER, AND FREE FROM TOXINS. TOPSOIL SHALL HAVE A pH BETWEEN 6 AND 7. TOPSOIL AND PLANTING SOIL SHALL BE TESTED TO CONFORM TO THESE SPECIFICATIONS AND SHALL BE AMENDED TO MEET THESE SPECIFICATIONS. DO NOT PLACE FROZEN OR MUDDY TOPSOIL. APPLY SOIL AMENDMENTS TO ALL LANDSCAPE BEDS PER SOIL TEST.
- MATERIALS - PRE-EMERGENT: PRE-EMERGENT HERBICIDE TO BE APPLIED TO ALL PLANTING AREAS PRIOR TO LANDSCAPE INSTALLATION.
- MATERIALS - EDGING: EDGING SHALL BE 5" DEEP, BLACK, POLYETHYLENE EDGING 'VALLEY VIEW BLACK DIAMOND' OR APPROVED EQUIVALENT AS APPROVED BY OWNER, EXCEPT FOR TREE RINGS. ALL DECIDUOUS AND EVERGREEN TREES NOT WITHIN EDGED LANDSCAPE PLANTING BEDS SHALL BE INSTALLED WITH A 5' DIAMETER TREE RING WITH SHOVEL CUT EDGING 5" IN DEPTH.
- SEEDING: ALL DISTURBED AREAS SHALL BE SEEDING AS SPECIFIED IN THESE NOTES.
- MATERIALS - SEED: ALL LAWN SEED SHALL BE EARTH CARPET'S 'SURVIVOR' OR OWNER APPROVED EQUIVALENT AS APPROVED BY THE OWNER'S REPRESENTATIVE, INSTALLED PER MANUFACTURER'S RECOMMENDATIONS. IN ADDITION TO LAWN SEED, ANNUAL RYE SHALL BE APPLIED TO ALL DISTURBED AREAS AT A RATE OF 6 LBS PER 1000 SQUARE FEET. FERTILIZE AND MULCH PER MANUFACTURER'S RECOMMENDATIONS.
- MATERIALS - SEED: BIORETENTION AREA TO BE HAND SEEDING WITH "DIVERSE PRAIRIE FOR MEDIUM SOILS" SEED MIX (ITEM NO. 50012) AS PROVIDED BY PRAIRIE NURSERY, P.O. BOX 306, WESTFIELD, WISCONSIN, 53964, TEL. 608-296-3679. INSTALL SEED WITH SUPPLEMENTAL MATERIALS AND AMENDMENTS AS RECOMMENDED BY SEED SUPPLIER AND AT RATES AND OPTIMUM TIMES OF THE YEAR AS RECOMMENDED BY THE SEED SUPPLIER TO ENSURE SUCCESSFUL GERMINATION AND SEED/ROOT ZONE GROWTH DEVELOPMENT.
- MATERIALS - FERTILIZER AND MULCH: TREES RINGS (TREES NOT WITHIN PLANTING BEDS OUTSIDE OF FENCE AREA) SHALL RECEIVE FINELY SHREDDED, WEED FREE, HARDWOOD BARK MULCH (DYE-FREE) SPREAD TO A CONSISTENT DEPTH OF 4 INCHES OVER ENTIRE PLANTING BED OR TREE RING, UNLESS OTHERWISE SPECIFIED ON PLANS. FERTILIZER SHALL BE IN ACCORDANCE WITH APPLICABLE LOCAL, COUNTY AND STATE OF WISCONSIN REQUIREMENTS.
- MATERIALS - MULCH: AREA WITHIN FENCE LIMITS TO RECEIVE CRUSHED GRAVEL. SIZE AND COLOR TO BE DETERMINED BY OWNER PRIOR TO FINAL CONSTRUCTION DOCUMENTS.
- MATERIALS - WEED BARRIER FABRIC: ALL PLANTING AREAS AND FENCED AREA WITH CRUSHED GRAVEL SHALL BE INSTALLED WITH WEED BARRIER FABRIC. NO PLASTIC/IMPERVIOUS BARRIERS WILL BE PERMITTED. EXAMPLE: BLACK VISCOQUEEN.
- PRUNING: THE CONTRACTOR SHALL PRUNE ALL TREES AND REPAIR ANY INJURIES THAT OCCURRED DURING THE PLANTING PROCESS. DOUBLE LEADERS, DEAD BRANCHES, AND LIMBS DAMAGED OR BROKEN DURING THE PLANTING PROCESS SHALL BE PRUNED. THIS SHALL BE THE ONLY PRUNING ALLOWED AT PLANTING. PRUNING SHALL CONFORM TO AMERICAN STANDARD FOR TREE CARE OPERATIONS, ANSI A300. PRUNE TREES IN ACCORDANCE WITH NAA GUIDELINES. DO NOT TOP TREES. PRUNE SHRUBS ACCORDING TO STANDARD HORTICULTURAL PRACTICES. ON CUTS OVER 3/4" IN DIAMETER AND BRUISES OR SCARS ON BARK, TRACE THE INJURED CAMBIUM LAYER BACK TO LIVING TISSUE AND REMOVE. SMOOTH AND SHAPE WOUNDS SO AS NOT TO RETAIN WATER AND COAT THE TREATED AREA WITH AN APPROVED ANTISEPTIC TREE PAINT.
- CLEANUP: DISPOSE OF EXCESS SOIL. REMOVE ALL CUTTINGS AND WASTE MATERIALS. SOIL, BRANCHES, BINDING AND WRAPPING MATERIALS, REJECTED PLANTS, OR OTHER DEBRIS RESULTING FROM ANY PLANTING SHALL BE PROMPTLY CLEANED UP AND REMOVED. THE WORK AREA SHALL BE KEPT SAFE AND NEAT AT ALL TIMES UNTIL THE CLEANUP OPERATION IS COMPLETED. UNDER NO CIRCUMSTANCES SHALL THE ACCUMULATION OF SOIL, BRANCHES OR OTHER DEBRIS BE ALLOWED UPON A PUBLIC PROPERTY IN SUCH A MANNER AS TO RESULT IN A PUBLIC HAZARD. LIKEWISE, UNDER NO CIRCUMSTANCES SHALL ANY DEBRIS OR INCIDENTAL MATERIALS BE ALLOWED UPON ADJACENT PRIVATE PROPERTY.
- MAINTENANCE: (CONTRACTOR) FOR ALL PLANTINGS, BUFFER AREAS AND SEEDED LAWN AREAS: THE CONTRACTOR SHALL MAINTAIN ALL PLANTINGS AND LAWN AREAS FOR AT LEAST A PERIOD OF 30 DAYS, OR UNTIL FINAL ACCEPTANCE FROM THE OWNER. THE CONTRACTOR IS RESPONSIBLE FOR ADEQUATELY WATERING PLANTS AND LAWN DURING THIS 30 DAY ESTABLISHMENT PERIOD. CONTRACTOR IS RESPONSIBLE FOR THE ESTABLISHMENT OF HEALTHY VIGOROUS PLANT MATERIALS AND LAWN/TURFGRASS GROWTH. CONTRACTOR IS ALSO RESPONSIBLE FOR ANY PRUNING OF PLANT MATERIALS, AND SHAPING AND/OR REPLACEMENT OF DEFICIENT BARK MULCH DURING THIS PERIOD.
- MAINTENANCE: (OWNER) THE OWNER IS RESPONSIBLE FOR THE CONTINUED MAINTENANCE, REPAIR AND REPLACEMENT OF ALL LANDSCAPING MATERIALS AND SEEDED AREAS AS NECESSARY FOLLOWING THE ONE (1) YEAR PLANT GUARANTEE PERIOD.

JSD Professional Services, Inc.
 • Engineers • Surveyors • Planners

"BUILDING RELATIONSHIPS WITH A COMMITMENT TO CLIENT SATISFACTION THROUGH TRUST, QUALITY AND EXPERIENCE"

- CIVIL ENGINEERING
- SURVEYING & MAPPING
- CONSTRUCTION SERVICES
- WATER RESOURCES
- PLANNING & DEVELOPMENT
- TRANSPORTATION ENGINEERING
- STRUCTURAL ENGINEERING
- LANDSCAPE ARCHITECTURE

MADISON REGIONAL OFFICE
 161 HORIZON DRIVE, SUITE 101
 VERONA, WISCONSIN 53593
 608.848.5060 PHONE | 608.848.2255 FAX

MADISON | MILWAUKEE
 KENOSHA | APPLETON
 www.jsdinc.com

SERVICES PROVIDED TO:
MADISON COLLEGE

PROJECT:
**MADISON COLLEGE
 FIRE TRAINING
 FACILITY**

PROJECT LOCATION:
**MADISON
 DANE COUNTY, WI**

JSD PROJECT NO.:

SEAL/SIGNATURE:

ALTHOUGH EVERY EFFORT HAS BEEN MADE IN PREPARING THESE PLANS AND CHECKING THEM FOR ACCURACY, THE CONTRACTOR AND SUBCONTRACTORS MUST CHECK ALL DETAIL AND DIMENSIONS OF THEIR TRADE AND BE RESPONSIBLE FOR THE SAME.

DESIGN:	JLF	08-26-11
DRAWN:	JLF	06-03-13
APPROVED:		

PLAN MODIFICATIONS:	DATE:
UDC SUBMITTAL - INFORMATIONAL	06-05-13
UDC SUBMITTAL - FINAL APPROVAL	07-16-13

DIGGERS HOTLINE

Toll Free (800) 242-8511
 Milwaukee Area (414) 258-1181
 Hearing Impaired TDD (800) 542-2289
 www.DiggersHotline.com

SHEET TITLE:
**LANDSCAPE DETAILS
 & SPECIFICATIONS**

SHEET NUMBER:
L-2.0