

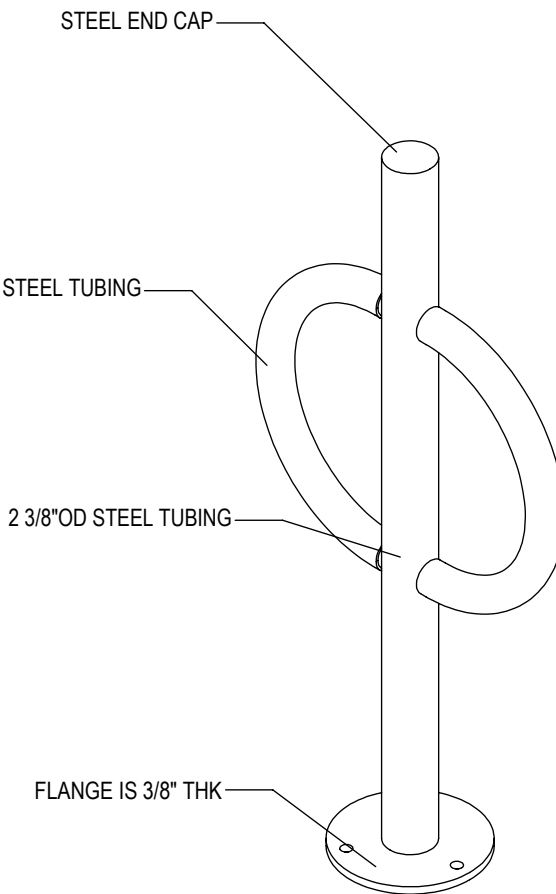
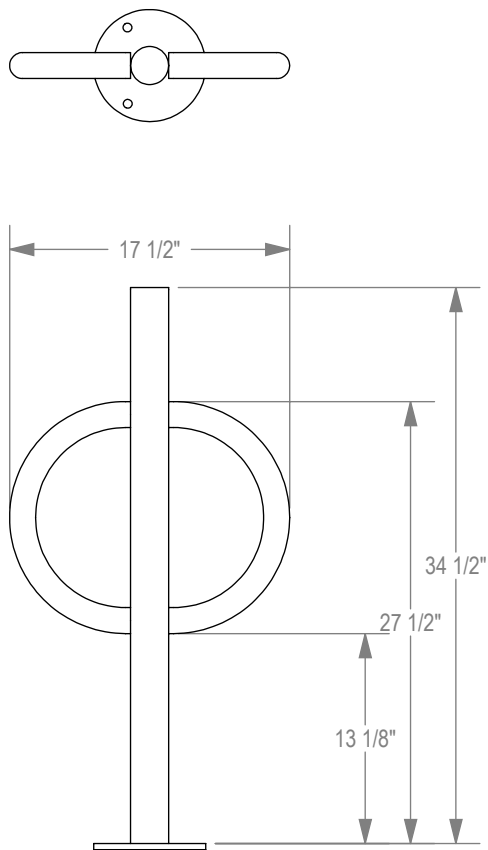
Legal Description

2208 University Avenue

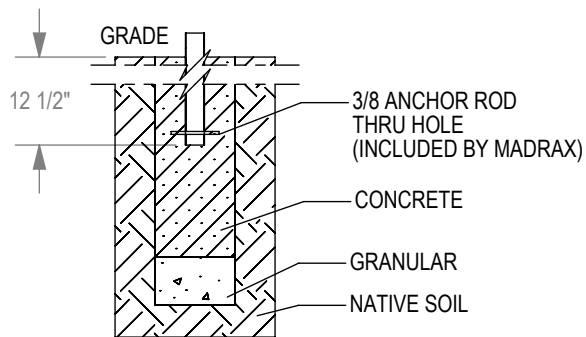
T7N R9E, SEC 21, PART OF NE 1/4, DESC AS FOL - COM AT A PT OF INTERS OF THE E LINE SD SEC & C/L OF UNIVERSITY AVE, TH N ALG SD SEC LINE 33 FT, TH W PARA T O C/L OF UNIVERSITY AVE 126 FT TO POB, TH N PARA TO E SEC LINE 260.5 FT, TH WLY 107 FT M/L TO A PT 110 FT M/L S OF THE R R R/W, TH S 236.5 FT TO THE N LINE OF UNIVERSITY AVE, TH ELY ALG N LINE OF UNIVERSITY AVE 100.5 FT TO POB.



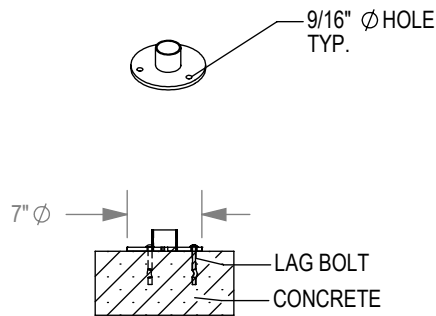
GRABER MANUFACTURING, INC., FORMERLY TRILARY, INC.
 1080 UNIEK DRIVE
 WAUNAKEE, WI 53597
 P(800) 448-7931, P(608) 849-1080, F(608) 849-1081
 WWW.MADRAX.COM, E-MAIL: SALES@MADRAX.COM



CHECK DESIRED MOUNT



IN GROUND MOUNT (IG)



SURFACE FLANGE MOUNT (SF)

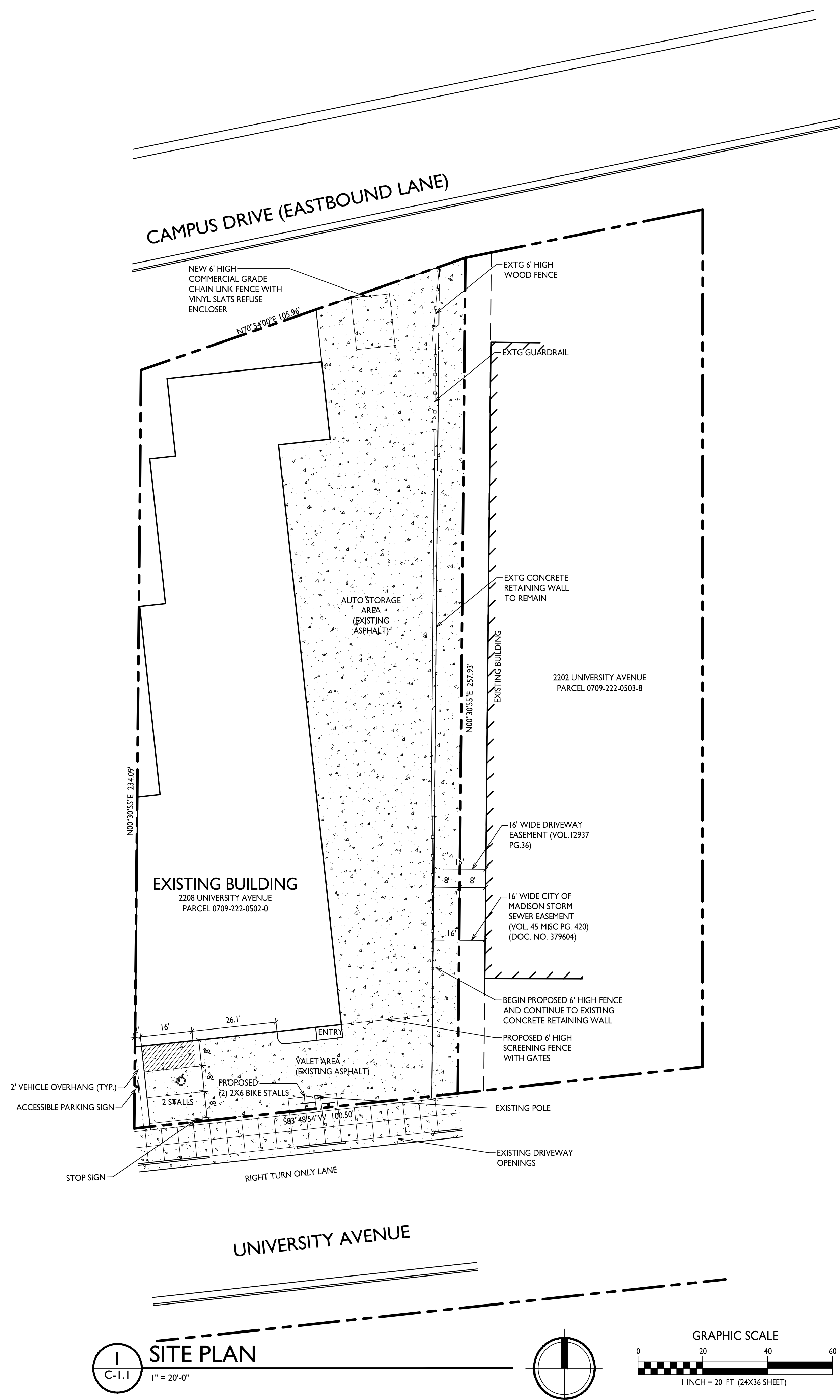
SECTION VIEWS

PRODUCT: BOL-2-SF(IG)
 DESCRIPTION: BOLLARD BIKE RACK WITH FLAT CAP, TUBE STEEL ARMS
 2 BIKE, SURFACE OR IN GROUND MOUNT

DATE: 8-20-12
 ENG: SMC

CONFIDENTIAL DRAWING AND INFORMATION IS NOT TO BE COPIED OR DISCLOSED TO OTHERS WITHOUT THE CONSENT OF GRABER MANUFACTURING, INC., FORMERLY TRILARY, INC. SPECIFICATIONS ARE SUBJECT TO CHANGE WITHOUT NOTICE.

- NOTES:
1. INSTALL BIKE RACKS ACCORDING TO MANUFACTURER'S SPECIFICATIONS.
 2. CONSULTANT TO SELECT COLOR(FINISH), SEE MANUFACTURER'S SPECIFICATIONS.
 3. SEE SITE PLAN FOR LOCATION OR CONSULT OWNER.



SITE DEVELOPMENT INFORMATION:

ZONING	TSS
LOT AREA	24,954 SF
BUILDING AREA	14,000 SF
STORAGE AREA	7,000 SF
FLOOR AREA	7,000 SF
SERVICE BAYS	8
PARKING STALLS	2
BICYCLE STALLS	2

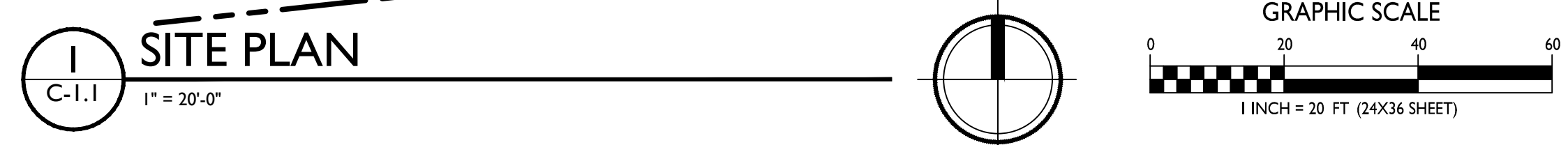
ISSUED
 Issued for Conditional Use & Major Alt to
 Conditional Use - September 5, 2018

PROJECT TITLE
**Don the Car Care
 Man**

2208 University Ave.
 Madison, WI
 SHEET TITLE
Site Plan

GENERAL NOTES:
 THE RIGHT-OF-WAY IS THE SOLE JURISDICTION OF THE CITY OF MADISON AND IS
 SUBJECT TO CHANGE AT ANY TIME PER THE RECOMMENDATION/PLAN OF TRAFFIC
 ENGINEERING AND CITY ENGINEERING DEPARTMENTS.

SHEET NUMBER
C-1.1
 PROJECT NO. **1806**
 © Knothe & Bruce Architects, LLC



SITE PLAN
 C-1.1
 1" = 20'-0"