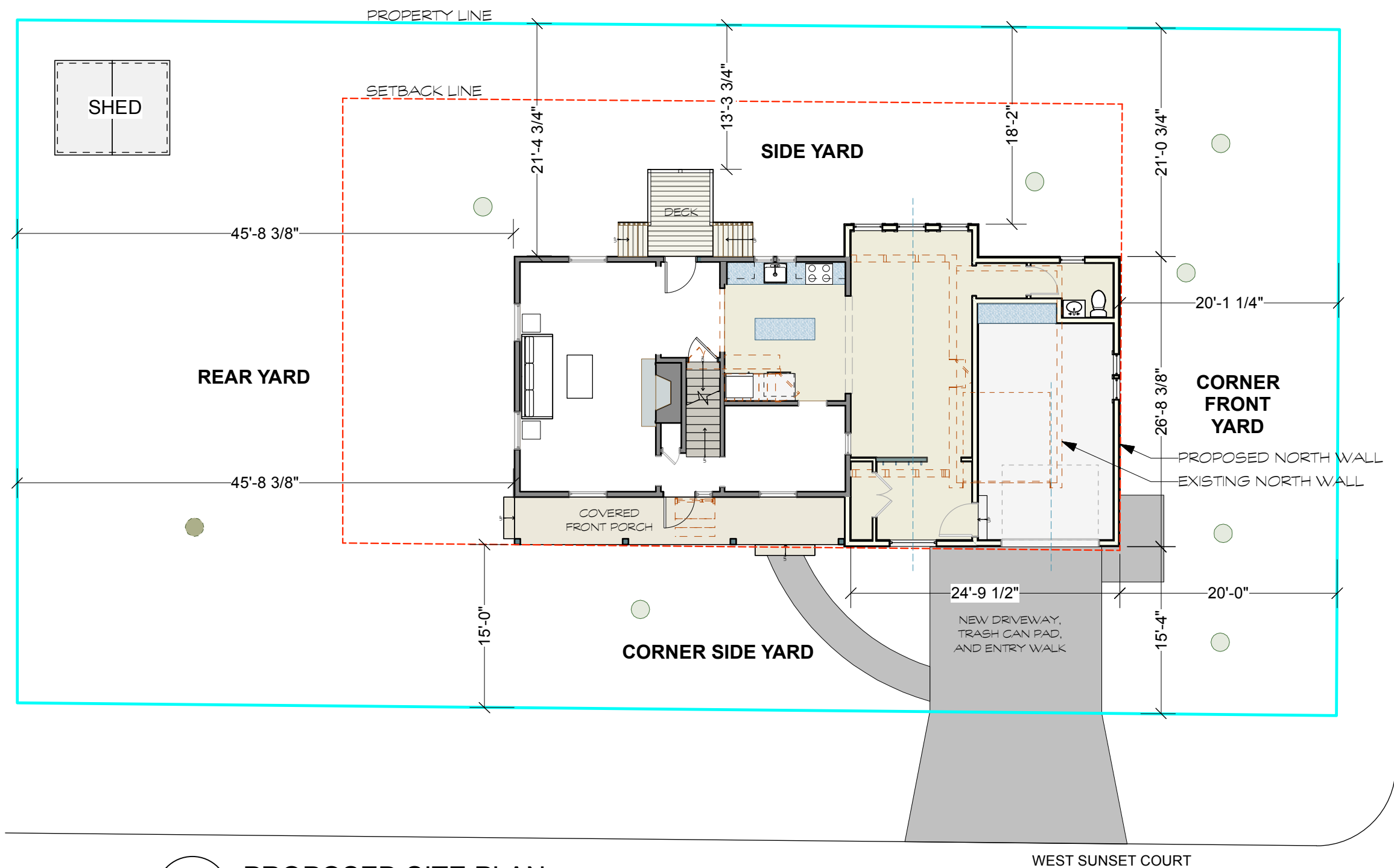


1 EXISTING SITE PLAN
 Scale: 3/32" = 1'-0"

+5	Version/Date: DEMO. PERMIT 12/29/23
+4	Printed by: LB
+3	COURTENAY 204 WEST SUNSET COURT MADISON, WI 53705
+2	
+1	
0	ASSOCIATED HOUSEWRIGHTS 1217 Culmen St, Madison, WI, 53713 www.housewrights.com (608) 238-7519
-1	
-2	
-3	
-4	Page Size: 11 x 17
-5	Scale: 3/32" = 1'-0"
	Page/Drawing 1 of 2



2 **PROPOSED SITE PLAN**
Scale: 3/32" = 1'-0"

Version/Date: DEMO. PERMIT 12/29/23
Printed by: LB
COURTENAY 204 WEST SUNSET COURT MADISON, WI 53705
ASSOCIATED HOUSEWRIGHTS 1217 Cullman St. Madison, WI. 53713 www.housewrights.com (608) 238-7519
Page Size: 11 x 17
Scale: 3/32"=1'-0"
Page/Drawing 2 of 2