

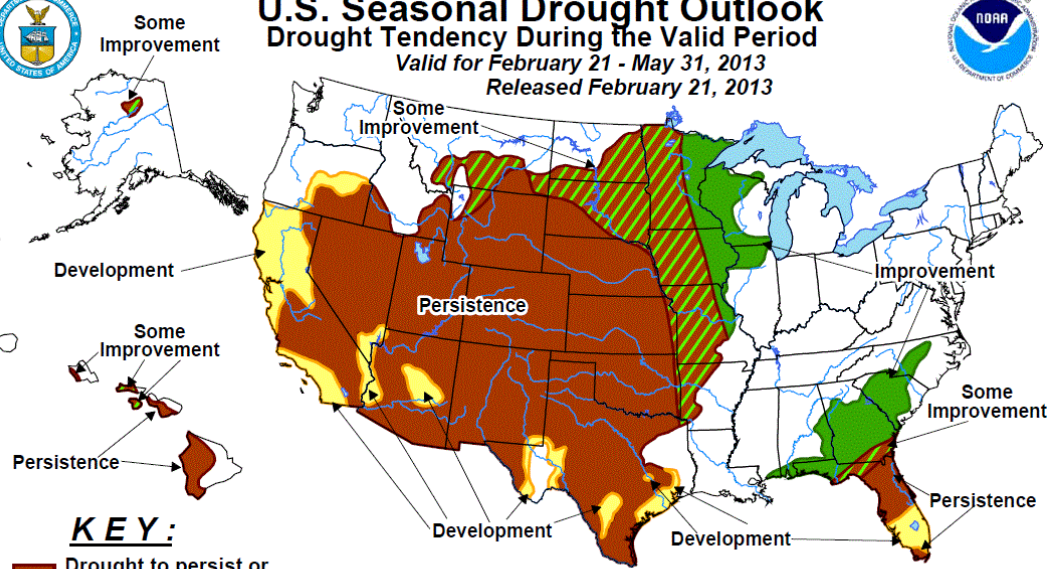


H₂Oscore



U.S. Seasonal Drought Outlook

Drought Tendency During the Valid Period
Valid for February 21 - May 31, 2013
Released February 21, 2013



KEY:

- Drought to persist or intensify
- Drought ongoing, some improvement
- Drought likely to improve, impacts ease
- Drought development likely

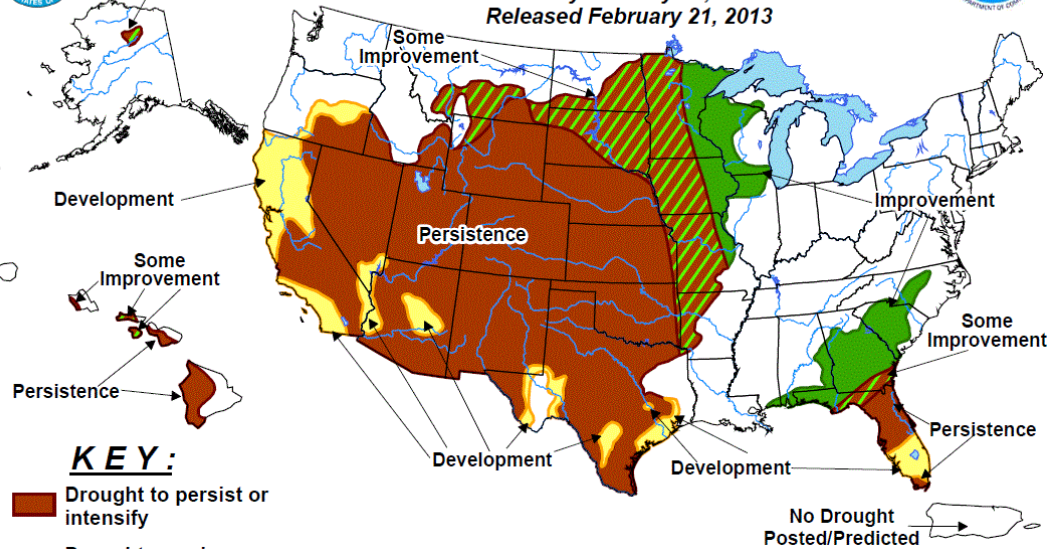
No Drought Posted/Predicted

Depicts large-scale trends based on subjectively derived probabilities guided by short- and long-range statistical and dynamical forecasts. Short-term events -- such as individual storms -- cannot be accurately forecast more than a few days in advance. Use caution for applications -- such as crops -- that can be affected by such events. "Ongoing" drought areas are approximated from the Drought Monitor (D1 to D4 intensity). For weekly drought updates, see the latest U.S. Drought Monitor. NOTE: the green improvement areas imply at least a 1-category improvement in the Drought Monitor intensity levels, but do not necessarily imply drought elimination.



U.S. Seasonal Drought Outlook

Drought Tendency During the Valid Period
Valid for February 21 - May 31, 2013
Released February 21, 2013



KEY:

- Drought to persist or intensify
- Drought ongoing, some improvement
- Drought likely to improve, impacts ease
- Drought development likely

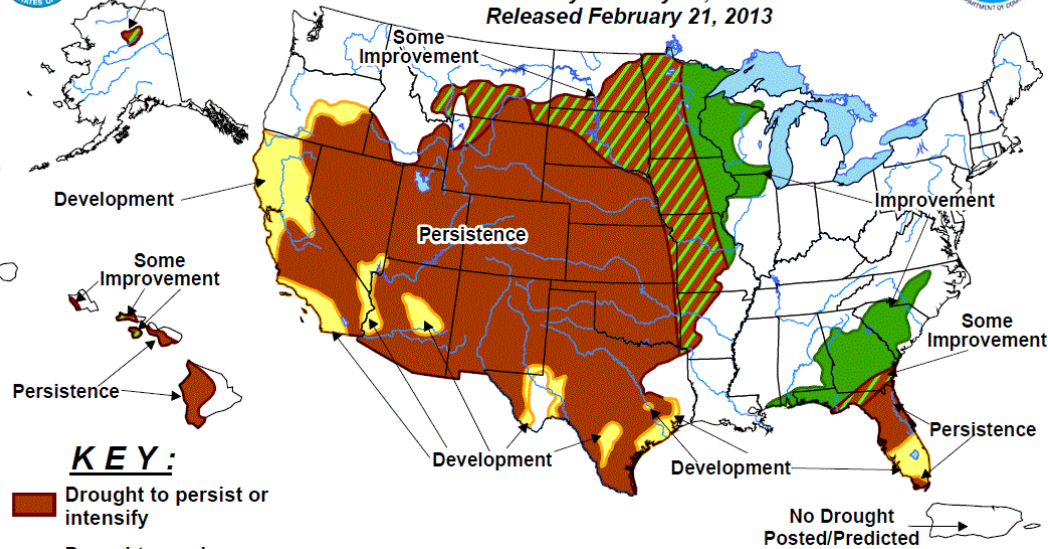
Depicts large-scale trends based on subjectively derived probabilities guided by short- and long-range statistical and dynamical forecasts. Short-term events -- such as individual storms -- cannot be accurately forecast more than a few days in advance. Use caution for applications -- such as crops -- that can be affected by such events. "Ongoing" drought areas are approximated from the Drought Monitor (D1 to D4 intensity). For weekly drought updates, see the latest U.S. Drought Monitor. NOTE: the green improvement areas imply at least a 1-category improvement in the Drought Monitor intensity levels, but do not necessarily imply drought elimination.





U.S. Seasonal Drought Outlook

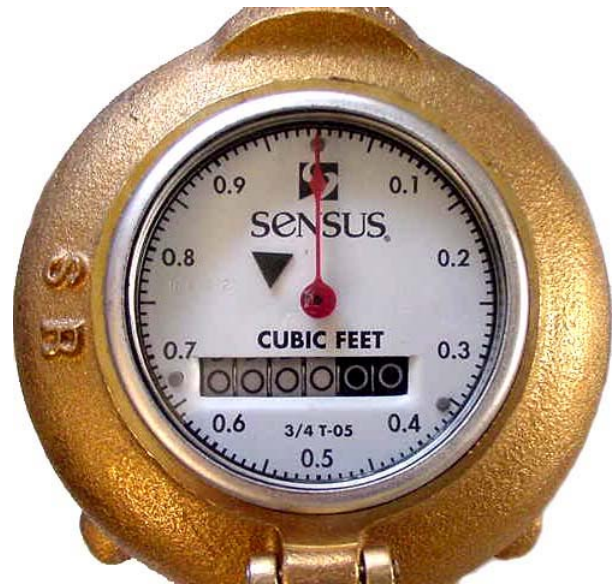
Drought Tendency During the Valid Period
Valid for February 21 - May 31, 2013
Released February 21, 2013



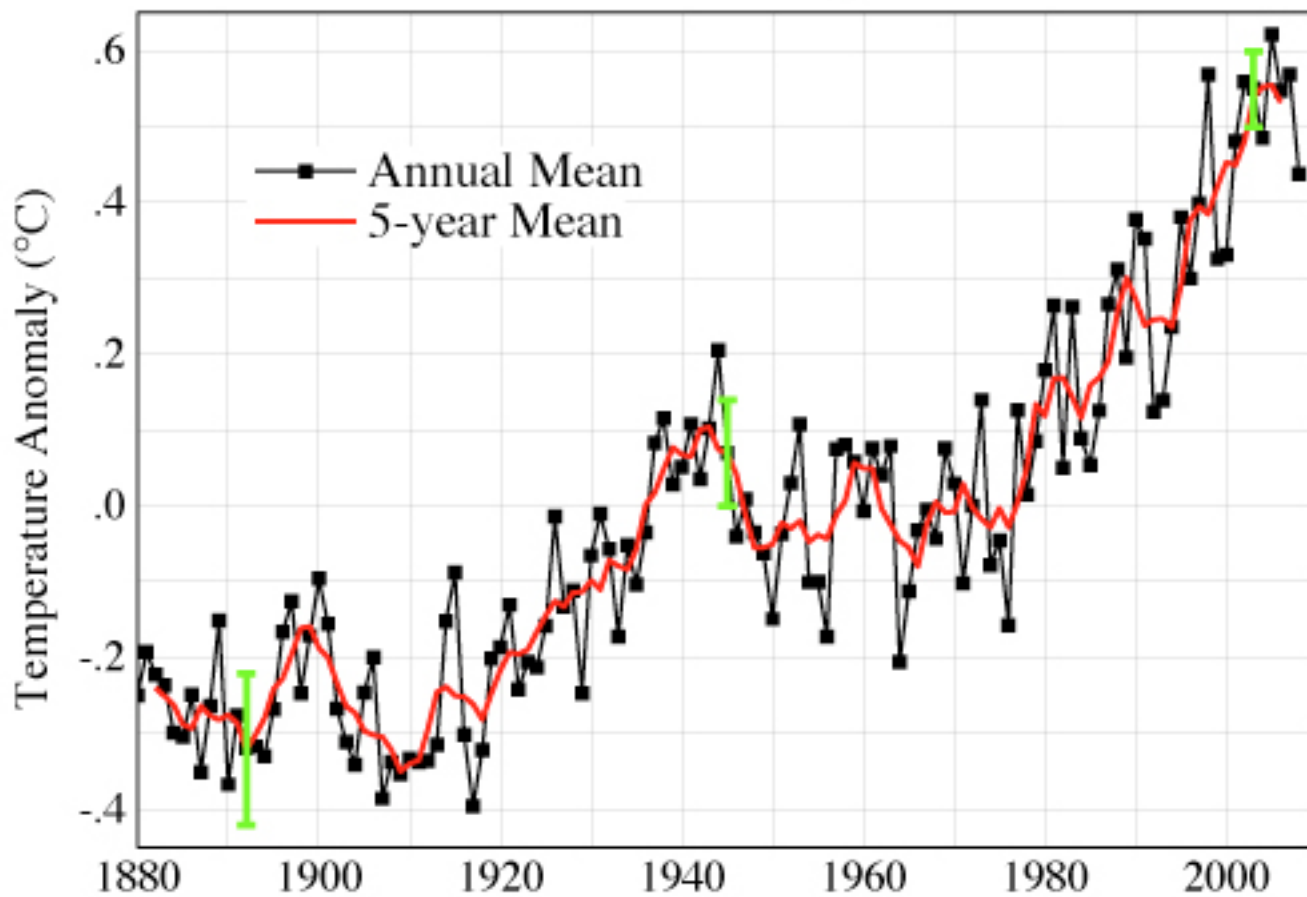
KEY:

- Drought to persist or intensify
- Drought ongoing, some improvement
- Drought likely to improve, impacts ease
- Drought development likely

Depicts large-scale trends based on subjectively derived probabilities guided by short- and long-range statistical and dynamical forecasts. Short-term events -- such as individual storms -- cannot be accurately forecast more than a few days in advance. Use caution for applications -- such as crops -- that can be affected by such events. "Ongoing" drought areas are approximated from the Drought Monitor (D1 to D4 intensity). For weekly drought updates, see the latest U.S. Drought Monitor. NOTE: the green improvement areas imply at least a 1-category improvement in the Drought Monitor intensity levels, but do not necessarily imply drought elimination.



Global Land-Ocean Temperature Index





+



=



+



+



H₂O Challenge

1.1 billion people lack access
to clean water

Each Day we pee in
cleaner water than
1.1 billion people
have to drink.



Trends in Consumer Prices (CPI) for Utilities

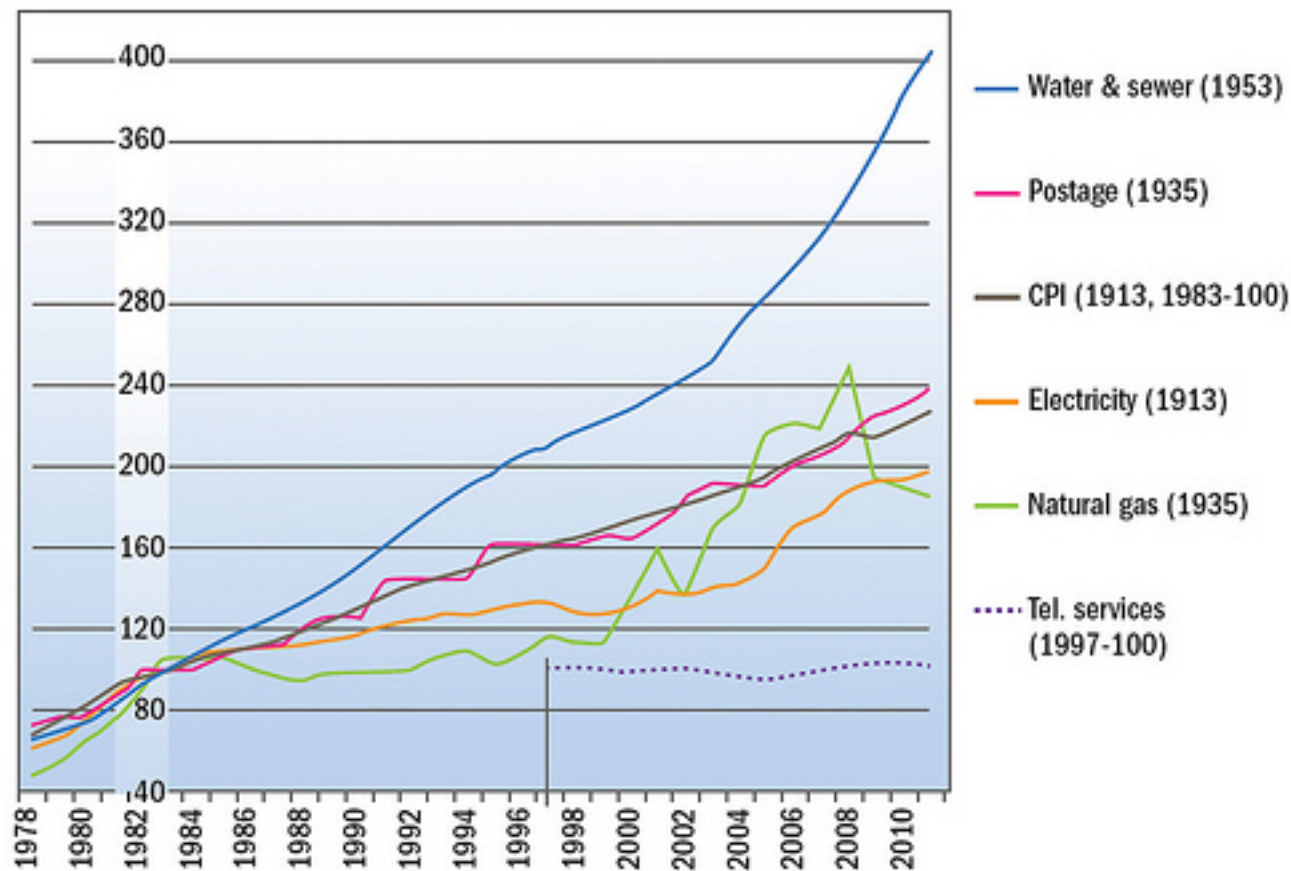


Exhibit 2. Trends in the Consumer Price Index for utilities (general, 1979-2011).

The index is set to 100 for 1982-1984 except for telephone services, where the index is set to 100 for 1997.



Save Water Earn Rewards Make a Difference

Take the guessing out of your water bill. Use H2Oscore to keep track and save money. Learn simple strategies to conserve water. Access your account anywhere at any time.

[Get Started Today!](#)



"Taps our innate desire for achievement and friendly competition."

- Vreni Hommes
Sustainability Consultant

"Simple changes have already yielded results."

- Milwaukee
Business Journal

"Quite interesting, helpful and practical."

- Virginia E.
Whitewater, WI.

"Could be crucial in encouraging conservation."

- Dean Amhaus
Milwaukee Water Council



east side pilates



H₂Oscore Rewards

Local Businesses Making a Difference.

Become more water efficient at home and automatically get rewarded! These green-minded businesses want to thank you for doing your part. See a full, updated list of sponsoring businesses on your dashboard.

Dashboard

Consumption:

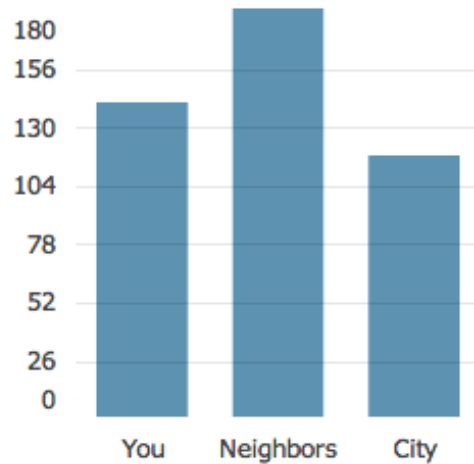
City records show your household averaged

139

gallons of water per day (GPD)
over the last billing cycle

Comparisons:

(Lower is better)



Rank vs Neighbors:

(Lower is better)



Your household rank is 34 of 103 in your neighborhood.

Making a Difference

