

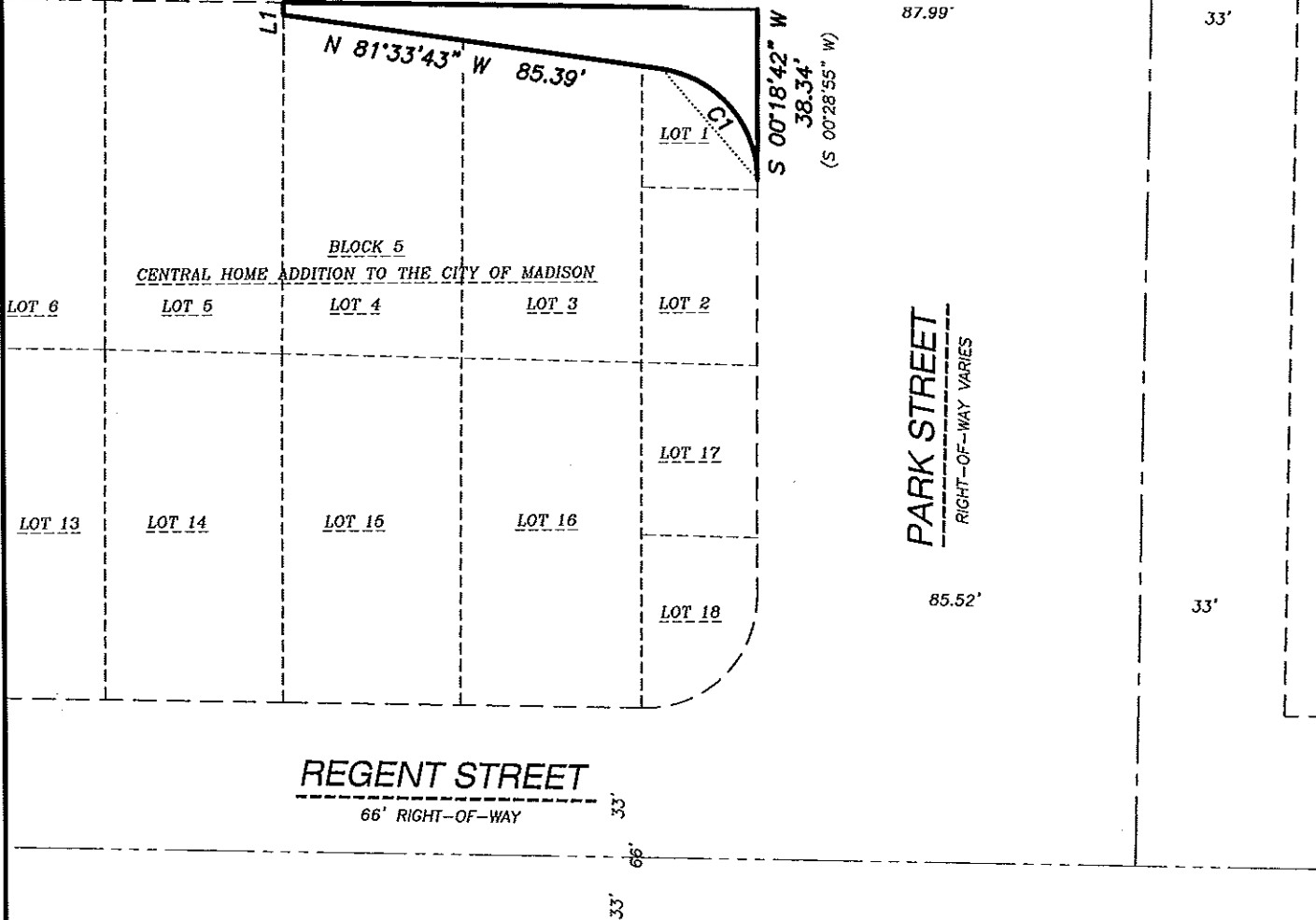
BLOCK 4, CENTRAL HOME ADDITION TO THE CITY OF MADISON

COLLEGE COURT

42' RIGHT-OF-WAY

SURPLUS PROPERTY

(S 88°48'00" E)
S 88°58'13" E 106.01'



LEGEND

- PARCEL BOUNDARY
- - - - - RIGHT-OF-WAY LINE
- CENTERLINE
- CHORD LINE
- - - - - PLATTED LOT LINE

NOTES

1. BEARINGS ARE REFERENCED TO THE WISCONSIN COUNTY COORDINATE SYSTEM, DANE COUNTY ZONE.
2. FIELD WORK PERFORMED BY JSD PROFESSIONAL SERVICES, INC. THE WEEK OF OCTOBER 22, 2007 AND APRIL 4, 2009.

CURVE TABLE

CURVE	LENGTH	RADIUS	DELTA	CHORD	CHORD BEARING
C-1	35.72'	25.00'	81°52'11"	32.76'	N 40°37'30" W

LINE TABLE

LINE	BEARING	DISTANCE
L1	N 00°18'34" E	2.85'

EXHIBIT A

PART OF LOTS 1, 3 AND 4, BLOCK 5, CENTRAL HOME ADDITION TO THE CITY OF MADISON, DANE COUNTY, WISCONSIN

PREPARED BY:

JSD Professional Services, Inc.
Engineers • Surveyors • Planners
161 HORIZON DRIVE, SUITE 101
VERONA, WISCONSIN 53593
PHONE: (608)848-5060

PREPARED FOR:

DEGEN AND ASSOCIATES, LLC
PO BOX 5567
MADISON, WI 53705-0567

PROJECT NO: 07-2890

FILE NO: A-126

FIELDBOOK/PG: 211/78

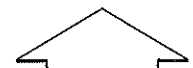
SHEET NO: 1 OF 1

SURVEYED BY: JK

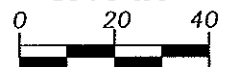
DRAWN BY: SO

CHECKED BY: JK

APPROVED BY: HPJ



north



SCALE: 1" = 40'