

**Joint Campus Area Committee**  
FINAL

# **Field House Exterior Restoration and Plaza** **University of Wisconsin-Madison**

2019-0612 JCAC

# Field House Plaza Development

## Confirm Program:

The Plaza project will redevelop the hardscape area south of the Field House from Breese Terrace to the driveway at Kellner Hall to better celebrate the approach to this historic building. The redevelopment includes paved and non-paved areas, stairs, landscaping elements and retaining walls. The fire lane will be maintained and sections will be resurfaced.

## Confirm Budget

Construction:	2,500,000
A/E Fees:	200,000
DFD Mgmt:	108,000
Contingency:	190,000
Total Project Cost:	2,998,000

## Confirm Schedule:

Final Review:	July, 2019
Bid Opening:	November, 2019
Start of Construction:	February, 2020
Substantial Completion / Occupancy:	August, 2020

# Field House Exterior Restoration

## Confirm Program:

The Field House restoration will involve replacement of the original east/south/west windows with new energy efficient, historic replica windows matching the existing mullions and frames. The project will replace (26) doors at the south side including gates B and C with replica doors. All other doors will be painted to match the original paint color.

## Confirm Budget

Construction:	2,500,000
A/E Fees:	200,000
DFD Mgmt:	108,000
Contingency:	187,000
Total Project Cost:	2,995,000

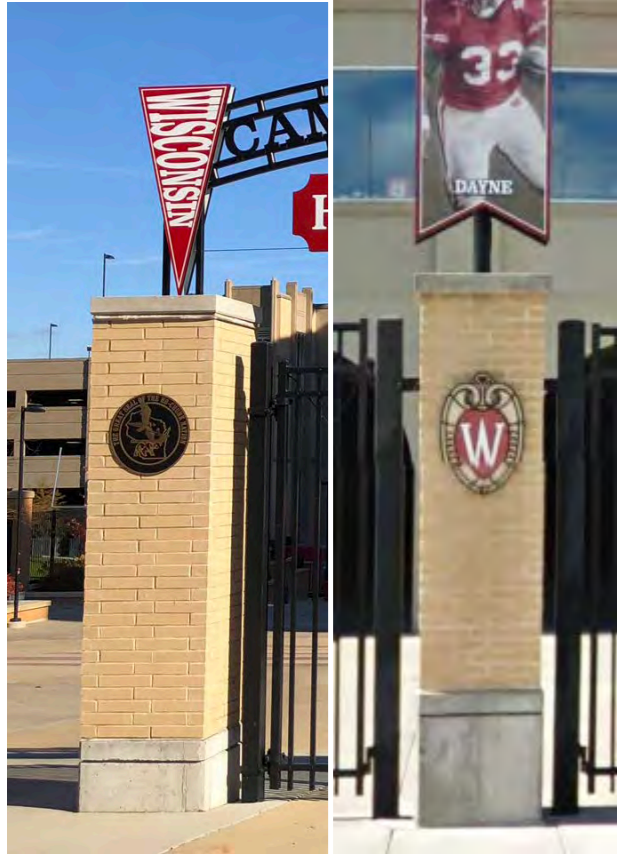
## Confirm Schedule:

Final Review:	July, 2019
Bid Opening:	November, 2019
Start of Construction:	February, 2020
Substantial Completion / Occupancy:	August, 2020

# Fieldhouse Plaza



# Campus Gateway



Site Precedence Piers



Campus Gateway Sign Mockup

# Little Street Plaza Concept



**Utility Support Pole**

# Little Street Plaza Concept



**Utility Support Pole**

# Fieldhouse Plaza

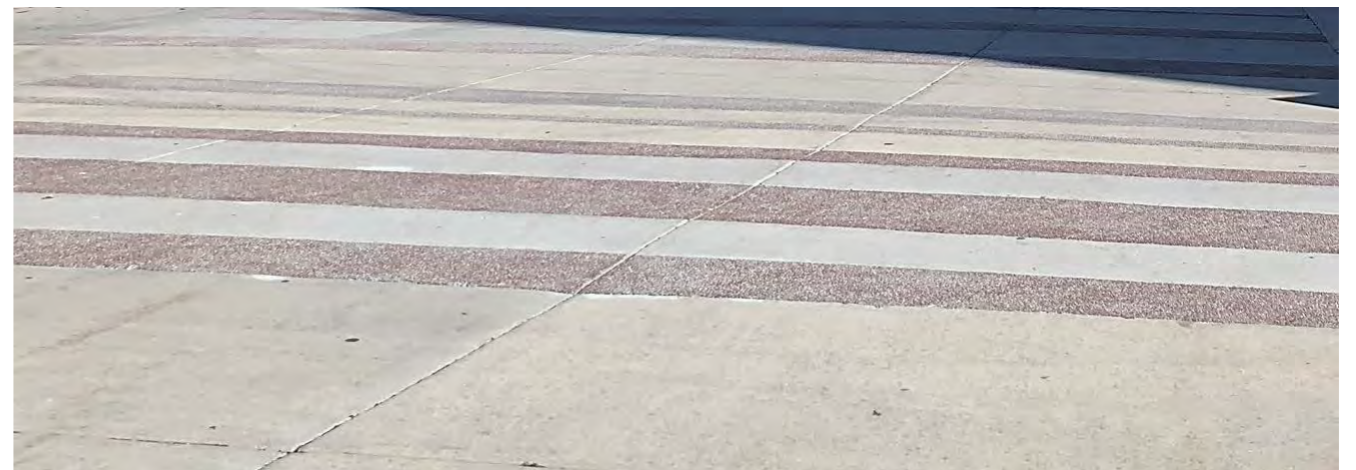


# Fieldhouse Plaza





# Accent Pavement



# Accent Pavement



# Retaining Wall Replacement



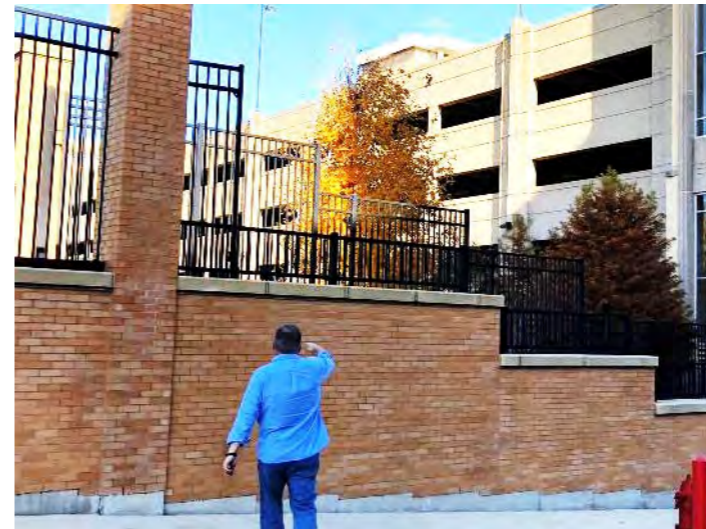
**Existing Retaining wall**



**Plan View**



**Brick Veneer Replacement Wall**



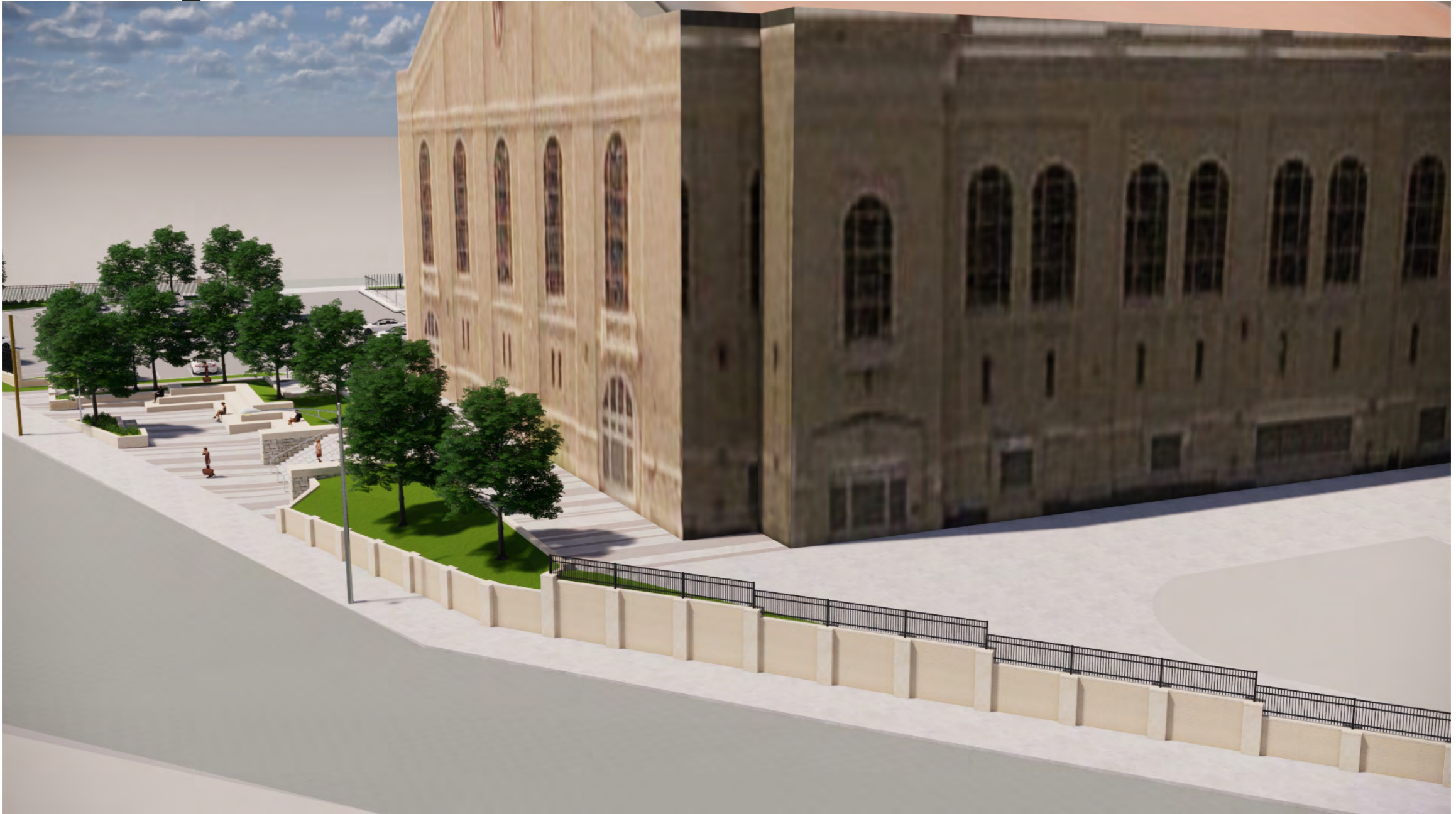
# New Retaining Wall

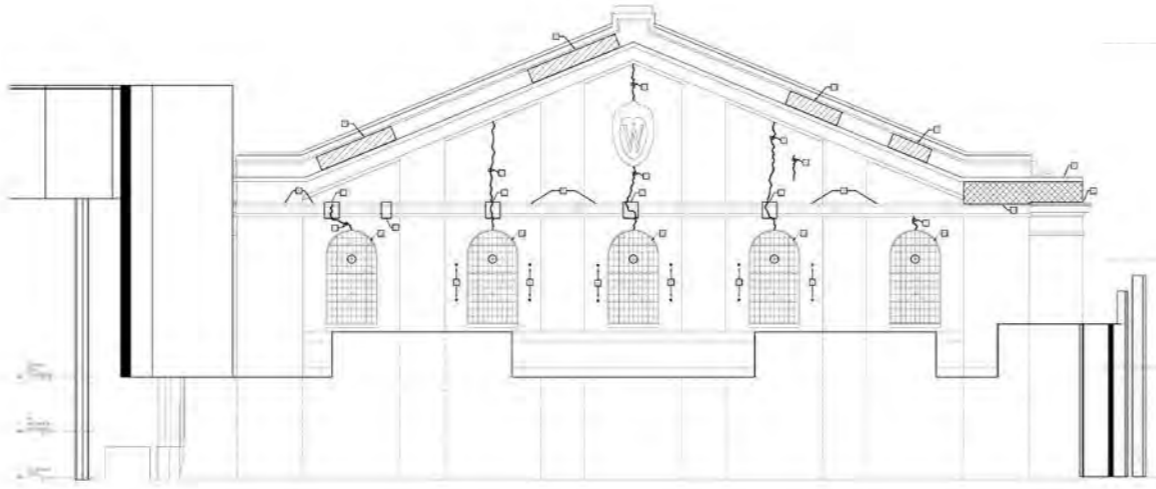


# New Retaining Wall

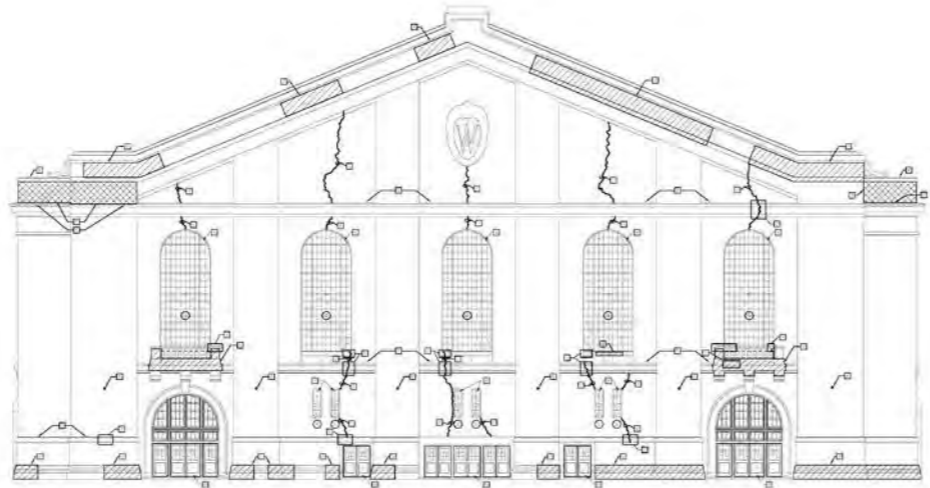


# New Retaining Wall





FIELD HOUSE EXTERIOR ELEVATION - LOOKING SOUTH  
3/32" = 1'-0"



FIELD HOUSE EXTERIOR ELEVATION - LOOKING NORTH  
3/32" = 1'-0"



SOUTH ENTRY PAINT ELEVATION  
1/8" = 1'-0"

**EXTERIOR RESTORATION GENERAL NOTES**

1. RESTORATION SHALL BE PERFORMED IN ACCORDANCE WITH THE HISTORIC PRESERVATION ACT AND THE NATIONAL HISTORIC PRESERVATION ACT.
2. ALL WORK SHALL BE DONE IN ACCORDANCE WITH THE HISTORIC PRESERVATION ACT AND THE NATIONAL HISTORIC PRESERVATION ACT.

**PLAN KEYED NOTES**

- 1. RESTORATION SHALL BE PERFORMED IN ACCORDANCE WITH THE HISTORIC PRESERVATION ACT AND THE NATIONAL HISTORIC PRESERVATION ACT.
- 2. ALL WORK SHALL BE DONE IN ACCORDANCE WITH THE HISTORIC PRESERVATION ACT AND THE NATIONAL HISTORIC PRESERVATION ACT.
- 3. RESTORATION SHALL BE PERFORMED IN ACCORDANCE WITH THE HISTORIC PRESERVATION ACT AND THE NATIONAL HISTORIC PRESERVATION ACT.
- 4. ALL WORK SHALL BE DONE IN ACCORDANCE WITH THE HISTORIC PRESERVATION ACT AND THE NATIONAL HISTORIC PRESERVATION ACT.
- 5. RESTORATION SHALL BE PERFORMED IN ACCORDANCE WITH THE HISTORIC PRESERVATION ACT AND THE NATIONAL HISTORIC PRESERVATION ACT.
- 6. ALL WORK SHALL BE DONE IN ACCORDANCE WITH THE HISTORIC PRESERVATION ACT AND THE NATIONAL HISTORIC PRESERVATION ACT.
- 7. RESTORATION SHALL BE PERFORMED IN ACCORDANCE WITH THE HISTORIC PRESERVATION ACT AND THE NATIONAL HISTORIC PRESERVATION ACT.
- 8. ALL WORK SHALL BE DONE IN ACCORDANCE WITH THE HISTORIC PRESERVATION ACT AND THE NATIONAL HISTORIC PRESERVATION ACT.
- 9. RESTORATION SHALL BE PERFORMED IN ACCORDANCE WITH THE HISTORIC PRESERVATION ACT AND THE NATIONAL HISTORIC PRESERVATION ACT.
- 10. ALL WORK SHALL BE DONE IN ACCORDANCE WITH THE HISTORIC PRESERVATION ACT AND THE NATIONAL HISTORIC PRESERVATION ACT.

**MATERIALS**

- 1. BRICK - COMMON BRICK
- 2. PLASTER - PLASTER

  
 BERNERS & SCHOBERT  
 ARCHITECTS & ENGINEERS  
 1000 N. UNIVERSITY AVENUE  
 MADISON, WI 53706

---

State of Wisconsin  
 Department of Administration  
 Division of State Facilities  
  
 UNIVERSITY OF WISCONSIN

---

**FIELD HOUSE EXTERIOR RESTORATION**  
 University of Wisconsin - Madison  
 Madison, Wisconsin  
 PROJECT NO. 15-0019

---

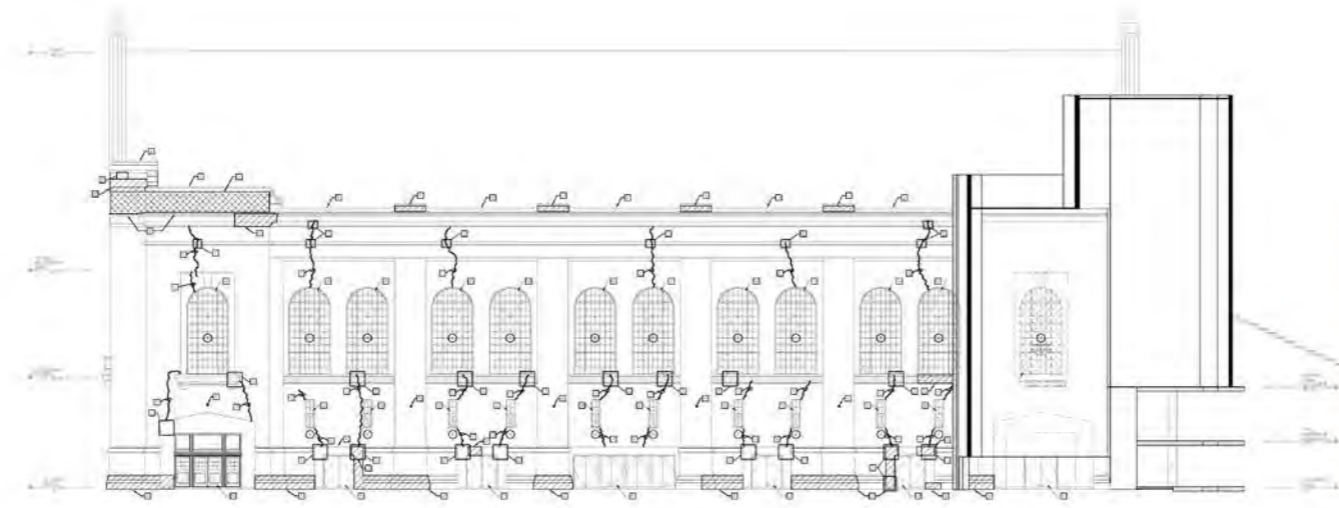
**EXTERIOR BUILDING ELEVATIONS**

---

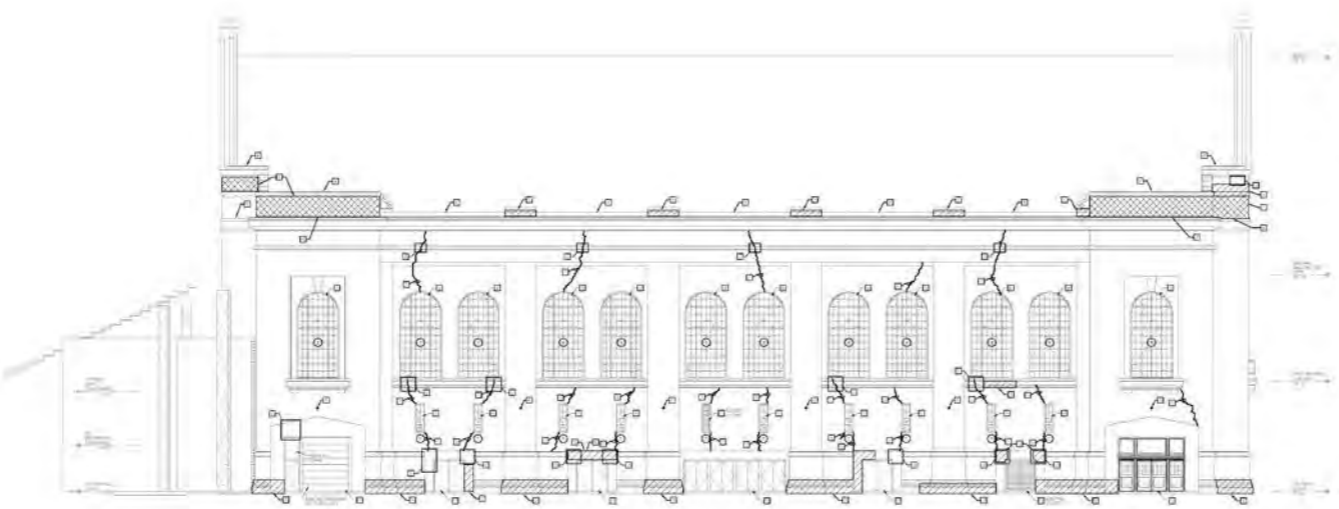
Discipline	No.	Date	By	Checked
Architecture	1	08/15/19	JK	JK
Structural				
Mechanical				
Electrical				
Plumbing				
Fire				
Other				

---

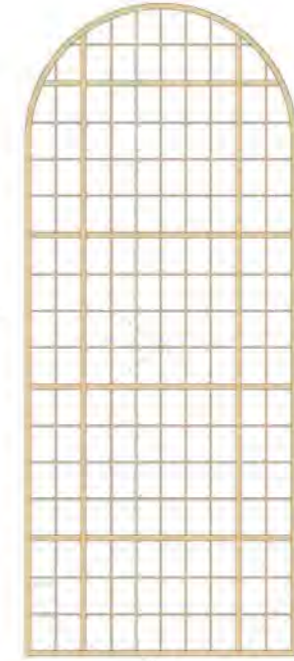
Scale:	1/8" = 1'-0"
Drawn by:	JK
Checked by:	JK
Date:	08/15/19
Project No.:	15-0019
Sheet No.:	A201



22 FIELDHOUSE EXTERIOR ELEVATION - LOOKING WEST  
3/32" = 1'-0"



23 FIELDHOUSE EXTERIOR ELEVATION - LOOKING EAST  
3/32" = 1'-0"



NEW  
2 2ND CAMPAIGN PAINT MATCH  
BUFF  
DW78H (BILTMORE BUFF)

24 ENLARGED WINDOWFRAME ELEVATION  
1/2" = 1'-0"

**EXTERIOR RESTORATION GENERAL NOTES**

1. ALL WORK SHALL BE PERFORMED IN ACCORDANCE WITH THE UNIVERSITY OF WISCONSIN-MADISON FACILITIES RESTORATION STANDARDS. THE UNIVERSITY OF WISCONSIN-MADISON FACILITIES RESTORATION STANDARDS ARE AVAILABLE AT: [www.uwmadison.edu/facilities/restoration](http://www.uwmadison.edu/facilities/restoration)

2. WORKMAN SHALL MAINTAIN RECORDS OF ALL WORK PERFORMED, INCLUDING MATERIALS USED, LABORERS EMPLOYED, AND COSTS INCURRED. RECORDS SHALL BE MAINTAINED THROUGHOUT THE PROJECT AND MADE AVAILABLE TO THE UNIVERSITY OF WISCONSIN-MADISON FACILITIES RESTORATION DIVISION UPON COMPLETION OF THE PROJECT.

**PLAN KEYED NOTES**

- 1. RESTORATION OF EXTERIOR WALLS SHALL BE PERFORMED IN ACCORDANCE WITH THE UNIVERSITY OF WISCONSIN-MADISON FACILITIES RESTORATION STANDARDS.
- 2. EXTERIOR WALLS SHALL BE REPAIRED AND REFINISHED TO MATCH EXISTING CONDITIONS.
- 3. EXTERIOR WALLS SHALL BE REPAIRED AND REFINISHED TO MATCH EXISTING CONDITIONS. ALL WORK SHALL BE PERFORMED IN ACCORDANCE WITH THE UNIVERSITY OF WISCONSIN-MADISON FACILITIES RESTORATION STANDARDS.
- 4. EXTERIOR WALLS SHALL BE REPAIRED AND REFINISHED TO MATCH EXISTING CONDITIONS. ALL WORK SHALL BE PERFORMED IN ACCORDANCE WITH THE UNIVERSITY OF WISCONSIN-MADISON FACILITIES RESTORATION STANDARDS.
- 5. EXTERIOR WALLS SHALL BE REPAIRED AND REFINISHED TO MATCH EXISTING CONDITIONS. ALL WORK SHALL BE PERFORMED IN ACCORDANCE WITH THE UNIVERSITY OF WISCONSIN-MADISON FACILITIES RESTORATION STANDARDS.

**MATERIALS**

- 1. BUFF (BILTMORE BUFF)
- 2. BUFF (BILTMORE BUFF)

BERNERS + SCHOBERT  
ARCHITECTS + ENGINEERS + DESIGNERS  
1930

State of Wisconsin  
Department of Administration  
Division of State Facilities  
 University of Wisconsin-Madison

**FIELD HOUSE EXTERIOR RESTORATION**

University of Wisconsin - Madison  
Madison, Wisconsin

**EXTERIOR BUILDING ELEVATIONS**

Sheet	Scale	Date
A202	1/8" = 1'-0"	12/12/19