



CREATE THE VISION TELL THE STORY

jsdinc.com

MADISON REGIONAL OFFICE
161 HORIZON DRIVE, SUITE 101
VERONA, WISCONSIN 53593
P. 608.848.5060

CLIENT:
CITY OF MADISON

CLIENT ADDRESS:
MARTIN LUTHER KING JR. BLVD.
MADISON, WI 53703

PROJECT:
OFFICIAL MAP
STREET RESERVATION

PROJECT LOCATION:
CITY OF MADISON
DANE COUNTY, WISCONSIN



0 50' 100' 200'
SCALE: 1" = 200'

Prepared By: JK 05/03/22
Reviewed By: INIT 00/00/00
Approved By: INIT 00/00/00

SHEET TITLE:
OFFICIAL MAP-STREET
RESERVATION

SHEET NUMBER:

1 OF 2

PROJECT NO: 22-11381

File: R20222211381DWGSurvey_Sheets2211381 OM Street Reservation.dwg, Layout Sheet 1, User: jk, Plotted: May 04, 2022 - 10:17am, Xref: zc

THESE PLANS AND DESIGNS ARE COPYRIGHT PROTECTED AND MAY NOT BE USED IN WHOLE OR IN PART WITHOUT THE WRITTEN CONSENT OF JSD PROFESSIONAL SERVICES, INC.

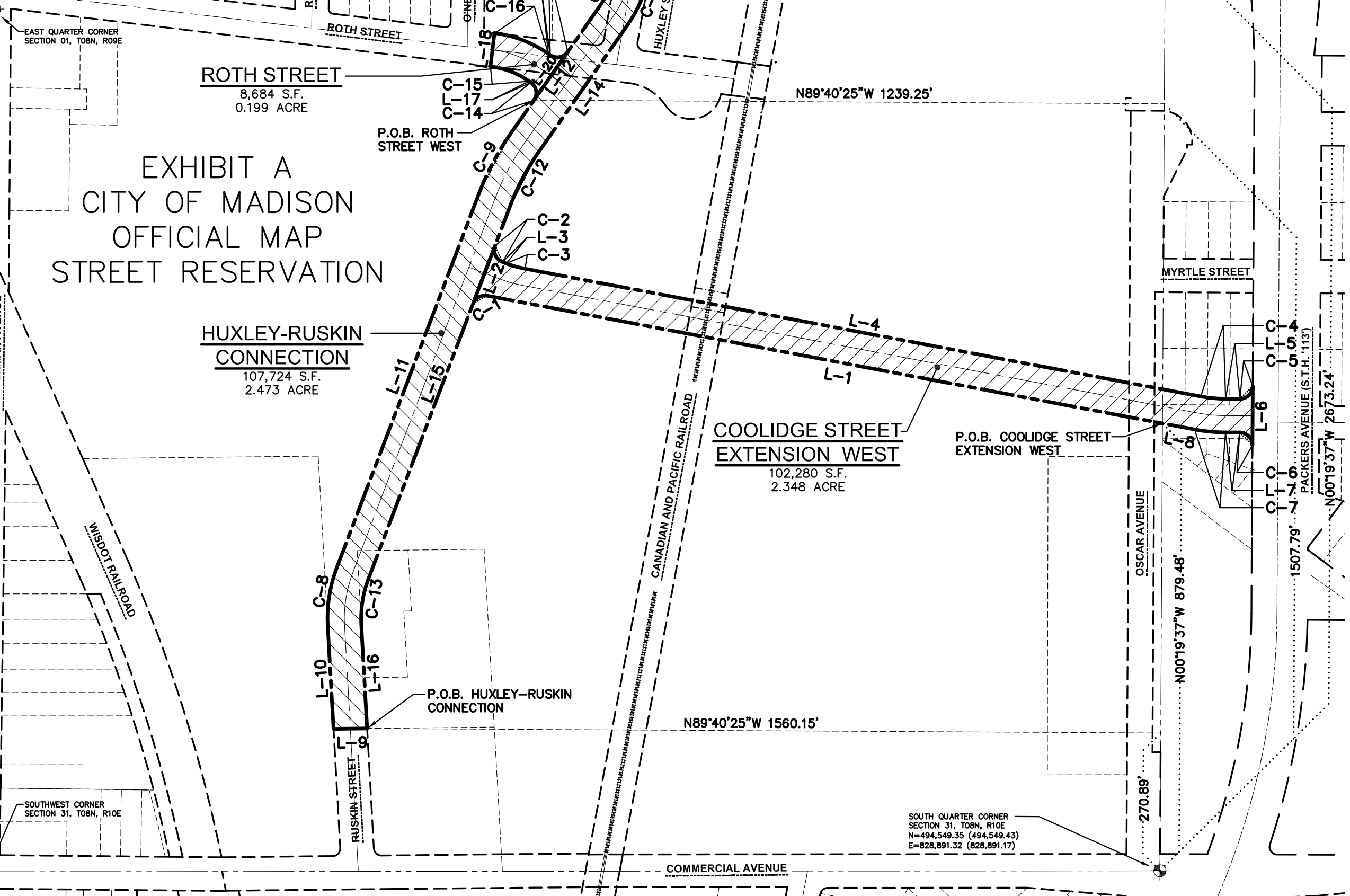
CENTER OF SECTION 31, T08N, R10E
N=497,222.55 (497,222.55)
E=828,906.58 (828,906.54)

EXHIBIT A CITY OF MADISON OFFICIAL MAP STREET RESERVATION

ROTH STREET
8,684 S.F.
0.199 ACRE

**HUXLEY-RUSKIN
CONNECTION**
107,724 S.F.
2.473 ACRE

**COOLIDGE STREET
EXTENSION WEST**
102,280 S.F.
2.348 ACRE



EAST QUARTER CORNER
SECTION 01, T08N, R09E

SOUTHWEST CORNER
SECTION 31, T08N, R10E

SOUTH QUARTER CORNER
SECTION 31, T08N, R10E
N=494,549.35 (494,549.43)
E=828,891.32 (828,891.17)

N89°40'25"W 1560.15'

N89°40'25"W 1239.25'

N0019'37"W 879.48'

N0019'37"W 2673.24'

1507.79'

270.89'

P.O.B. ROTH STREET WEST

P.O.B. HUXLEY-RUSKIN CONNECTION

P.O.B. COOLIDGE STREET EXTENSION WEST

WISDOT RAILROAD

CANADIAN AND PACIFIC RAILROAD

PACKERS AVENUE (S.T.H. 113)

MYRTLE STREET

OSCAR AVENUE

COMMERCIAL AVENUE

N SHERMAN AVENUE

RUSKIN STREET

ONEIL AVENUE

HUXLEY STREET

C-17
C-19
C-16

C-15
C-17
C-14

C-9
C-12

C-2
L-3
C-3

C-1
L-2

L-11
L-15

C-8
C-13

L-10
L-16

L-18
L-12
L-14

C-10
C-11

L-4
L-1

C-6
C-7

L-8

C-6
C-7

LEGEND

- GOVERNMENT CORNER
- PARCEL BOUNDARY
- SECTION LINE
- RIGHT-OF-WAY LINE
- CENTERLINE
- PLATTED LOT LINE

NOTES

1. BEARINGS FOR THIS SURVEY AND MAP ARE REFERENCED TO THE WISCONSIN COUNTY COORDINATE SYSTEM, DANE COUNTY. THE EAST LINE OF THE SOUTHWEST QUARTER OF SECTION 31-08-10, RECORDED AS N00°19'38"E.

ROTH STREET EAST

LINE TABLE		
LINE	BEARING	DISTANCE
L-1	N79°17'56"W	1350.98'
L-2	N20°48'47"E	122.26'
L-3	S69°11'13"E	7.84'
L-4	S79°17'56"E	1352.28'
L-5	S89°50'54"E	28.17'
L-6	S00°19'38"W	116.00'
L-7	N89°50'54"W	27.81'
L-8	N79°17'56"W	64.20'

CURVE TABLE					
CURVE	LENGTH	RADIUS	DELTA	CHORD BEARING	CHORD
C-1	34.86'	25.00'	79°53'17"	S60°45'25"W	32.10'
C-2	39.27'	25.00'	90°00'00"	S24°11'13"E	35.36'
C-3	38.30'	217.00'	10°06'43"	S74°14'35"E	38.25'
C-4	49.16'	267.00'	10°32'58"	S84°34'25"E	49.09'
C-5	39.19'	25.00'	89°49'28"	N45°14'22"E	35.30'
C-6	39.35'	25.00'	90°10'32"	N44°45'38"W	35.41'
C-7	61.31'	333.00'	10°32'58"	N84°34'25"W	61.23'

HUXLEY-RUSKIN CONNECTION

LINE TABLE		
LINE	BEARING	DISTANCE
L-9	S89°21'13"W	66.07'
L-10	N03°12'43"W	201.74'
L-11	N20°48'47"E	787.40'
L-12	N34°58'54"E	304.51'
L-13	S79°54'09"E	66.00'
L-14	S34°58'54"W	304.51'
L-15	S20°48'47"W	787.40'
L-16	S03°12'43"E	204.69'

CURVE TABLE					
CURVE	LENGTH	RADIUS	DELTA	CHORD BEARING	CHORD
C-8	118.67'	283.00'	24°01'29"	N08°48'02"E	117.80'
C-9	131.81'	533.00'	14°10'07"	N27°53'50"E	131.47'
C-10	94.25'	217.00'	24°53'03"	N22°32'22"E	93.51'
C-11	122.91'	283.00'	24°53'03"	S22°32'22"W	121.95'
C-12	115.48'	467.00'	14°10'07"	S27°53'50"W	115.19'
C-13	90.99'	217.00'	24°01'29"	S08°48'02"W	90.33'

ROTH STREET WEST

LINE TABLE		
LINE	BEARING	DISTANCE
L-17	N55°01'06"W	4.25'
L-18	N06°49'47"E	66.00'
L-19	S55°01'06"E	4.25'
L-20	S34°58'54"W	116.00'

CURVE TABLE					
CURVE	LENGTH	RADIUS	DELTA	CHORD BEARING	CHORD
C-14	39.27'	25.00'	90°00'00"	N10°01'06"W	35.36'
C-15	82.05'	167.00'	28°09'07"	N69°05'40"W	81.23'
C-16	114.48'	233.00'	28°09'07"	S69°05'40"E	113.34'
C-17	39.27'	25.00'	90°00'00"	N79°58'54"E	35.36'