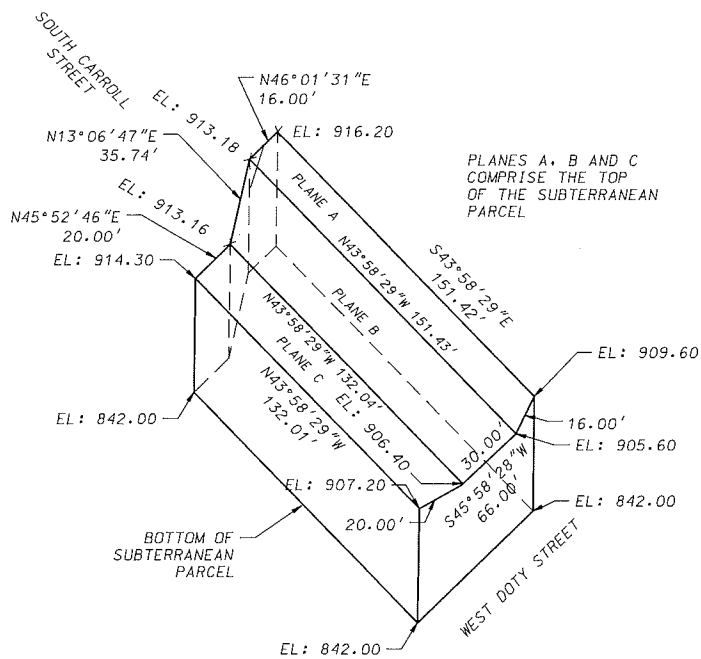


# EXHIBIT

A



SUBTERRANEAN PARCEL DETAIL



BEARINGS ARE BASED UPON  
THE WISCONSIN COUNTY  
COORDINATE SYSTEM, DANE  
ZONE; THE WEST LINE OF  
THE NW1/4 OF SEC. 24-7-9  
BEARS S00°54'03"W

60  
Scale 1" = 60'

**D'ONOFRIO KOTTKE AND ASSOCIATES, INC.**  
7530 Westward Way, Madison, WI 53717  
Phone: 608.833.7530 • Fax: 608.833.1089  
**YOUR NATURAL RESOURCE FOR LAND DEVELOPMENT**