

To: City of Madison

From: Tenney-Lapham Neighborhood Association (TLNA)

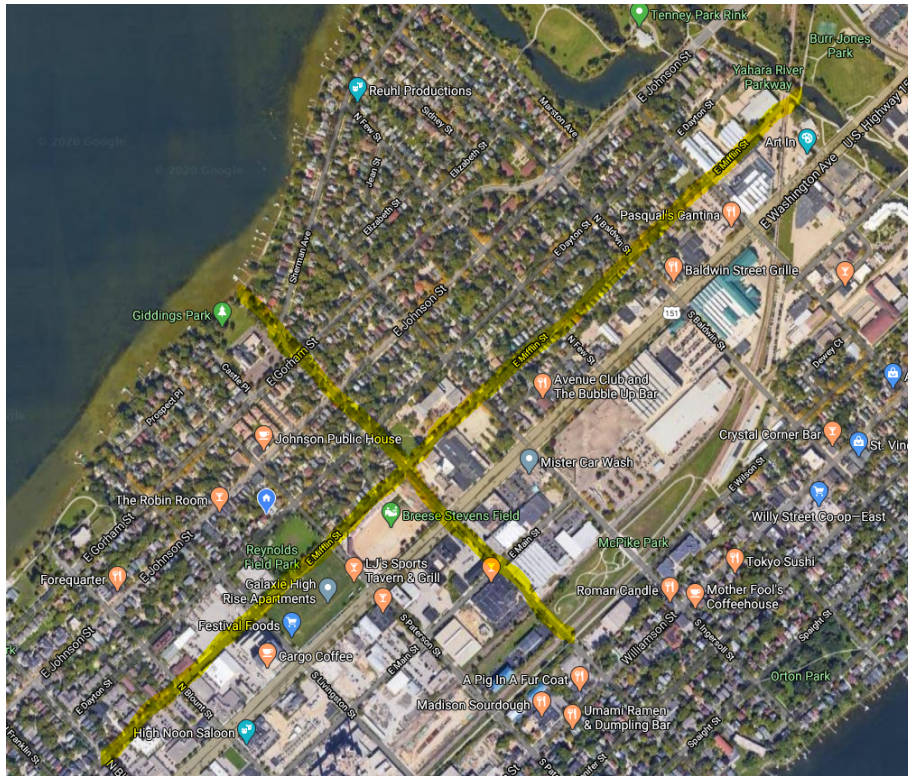
Request to City of Madison Transportation Department for the temporary restriction of motor vehicles on E Mifflin and xxxx (N Brearly?) streets

Action Request: Temporarily restrict automobile through-traffic on E Mifflin St (600 – 1400 blocks) and N Brearly St (00 – 400 blocks) in order to expand pedestrian and bicycle access and safety.

Goal: To provide adequate space for residents to safely move throughout the city for personal health, wellbeing, and active transportation while maintaining social distancing measures recommended during the COVID-19 pandemic.

Location selection:

- Both E Mifflin and Brearly are low-traffic residential streets and do not interfere with Madison Metro or other major transportation routes
- E Mifflin is already a bicycle boulevard with existing traffic diverting measures in select locations (e.g. diverter at Mifflin/Blair; no-turn sign at Mifflin and Baldwin)
- E Mifflin would provide connection between the neighborhood's existing public open spaces of Reynolds Park, Lapham Schoolyard, and Burr Jones Park / Yahara River Parkway, as well as improved community access to Festival Foods for critical food and supplies.
- Brearly would provide connection among Giddings park, Lapham Schoolyard, and potentially McPike Park if extended to the 300 block of S Brearly.



Closure mechanism: TBD by Transportation Engineering. We imagine that a single barricade located at each crossing intersection may be sufficient to prevent through traffic while maintaining vehicle access for emergency vehicles and residents of that blocks. Similar low-level signage and infrastructure has been successful for temporarily closing these streets during city race events, Breese Stevens events, and recent isthmus flooding emergencies.

Precedents: Similar actions have already been taken in other U.S. cities in response to COVID-19, and are being rapidly pursued by municipalities across the country:

- A Compilation of other [cities taking similar actions](#)
- National Association of Transportation Officials’s Covid-19 Transportation Response Center (View the [“relieve crowded areas” tab](#))
- In addition to large cities like [New York](#) and [Denver](#), other Midwestern and small cities are taking action as well, for example:
 - Duluth, MN: <https://duluthmn.gov/media/WebSubscriptions/93/20200326-93-5836.pdf>
 - Winnipeg, CA: <https://twitter.com/cityofwinnipeg/status/1245086821085622272>
 - St. Paul, MN: <https://twitter.com/cityofsaintpaul/status/1246232912971915265>

Jonny Hunter
President TLNA Council