

**APPLICATION FOR
URBAN DESIGN COMMISSION
REVIEW AND APPROVAL**

**AGENDA ITEM # _____
Project # _____
Legistar # _____**

DATE SUBMITTED: _____	Action Requested
UDC MEETING DATE: _____	<input type="checkbox"/> Informational Presentation
	<input type="checkbox"/> Initial Approval and/or Recommendation
	<input type="checkbox"/> Final Approval and/or Recommendation

PLEASE PRINT!

PLEASE PRINT!

PROJECT ADDRESS: 2501 East Springs Drive
ALDERMANIC DISTRICT: 17
OWNER/DEVELOPER (Partners and/or Principals) ARCHITECT/DESIGNER/OR AGENT:
Don Goben, DMG Holding Company LLC Arlan Kay, Architecture Network Inc
1415 Pflaum Rd 116 E Dayton St
Madison, WI 53716 Madison, WI 53703
CONTACT PERSON: Arlan Kay, Architecture Network Inc
Address: 116 E Dayton St
Madison, WI 53703
Phone: (608) 251-7515 x27
Fax: (608) 251-7566
E-mail address: arlan_archnet@tds.net

TYPE OF PROJECT:
(See Section A for:)

- Planned Unit Development (PUD)
 - General Development Plan (GDP)
 - Specific Implementation Plan (SIP)
- Planned Community Development (PCD)
 - General Development Plan (GDP)
 - Specific Implementation Plan (SIP)
- Planned Residential Development (PRD)
- New Construction or Exterior Remodeling in an Urban Design District * (A public hearing is required as well as a fee)
- School, Public Building or Space (Fee may be required)
- New Construction or Addition to or Remodeling of a Retail, Hotel or Motel Building Exceeding 40,000 Sq. Ft.
- Planned Commercial Site

(See Section B for:)

- New Construction or Exterior Remodeling in C4 District (Fee required)

(See Section C for:)

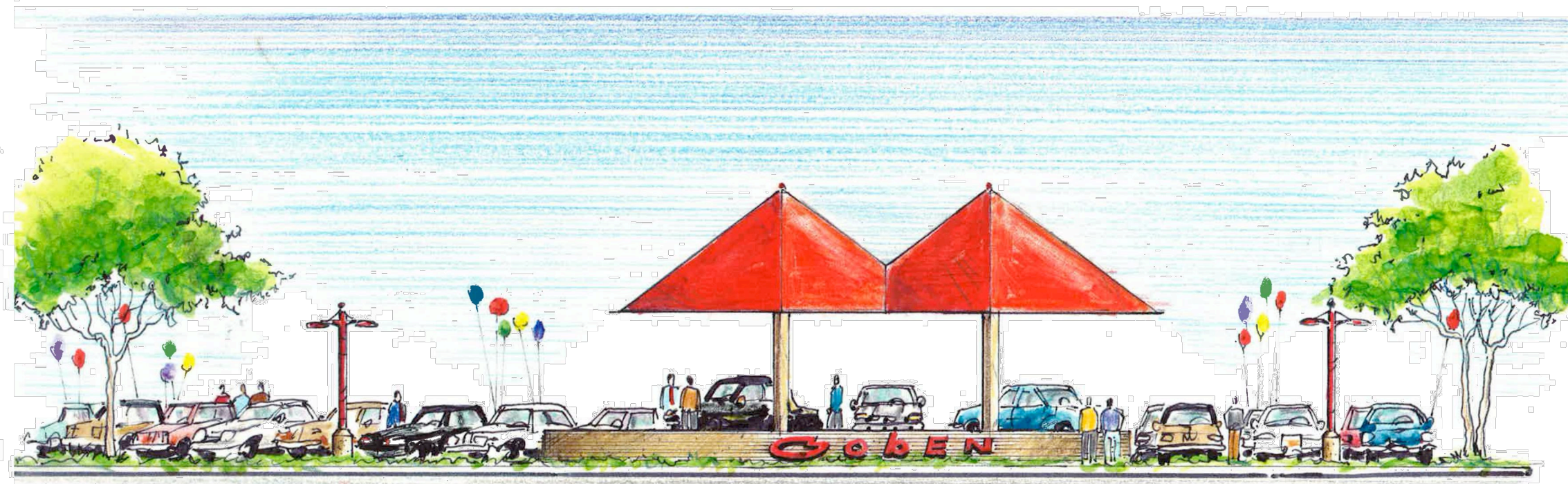
- R.P.S.M. Parking Variance (Fee required)

(See Section D for:)

- Comprehensive Design Review* (Fee required)
- Street Graphics Variance* (Fee required)
- Other _____

*Public Hearing Required (Submission Deadline 3 Weeks in Advance of Meeting Date)

Where fees are required (as noted above) they apply with the first submittal for either initial or final approval of a project.



CORNER VIEW

1" = 10'

SHEET INDEX

- TS1.1 TITLE SHEET
- DP-1.0 OVERALL DEVELOPMENT PLAN (11X17 Only)
- DP-1.1 AERIAL PHOTO - DEVELOPMENT (11X17 Only)
- C1.0 SITE PLAN
- C1.1 SITE GRADING, UTILITY, STORM WATER PLAN
- L-1.0 LANDSCAPE PLAN
- C3.1 SITE LIGHTING PLAN
- C3.2 SITE LIGHTING FIXTURES
- A1.1 FLOOR PLAN
- A2.1 ELEVATIONS
- A2.2 ELEVATIONS
- A3.1 SITE RENDERING - CORNER (11X17 Only)
- A3.1 SITE RENDERING - EAST SPRINGS DRIVE (11X17 Only)

Goben Cars

East Springs Drive
Madison, Wisconsin

REVISIONS:

NO.	DATE	DESCRIPTION

DATE: 12-19-2012

SCALE: -

PROJECT: K1214

DRAWN BY: KAC

DRAWING NAME:

TITLE SHEET

DRAWING NUMBER:

TS1.1

Goben Cars

East Springs Drive
Madison, Wisconsin

REVISIONS:

NO.	DESCRIPTION	DATE

DATE: 19 DEC 2012
SCALE: NTS
PROJECT: K1214
DRAWN BY: ASH

DRAWING NAME:

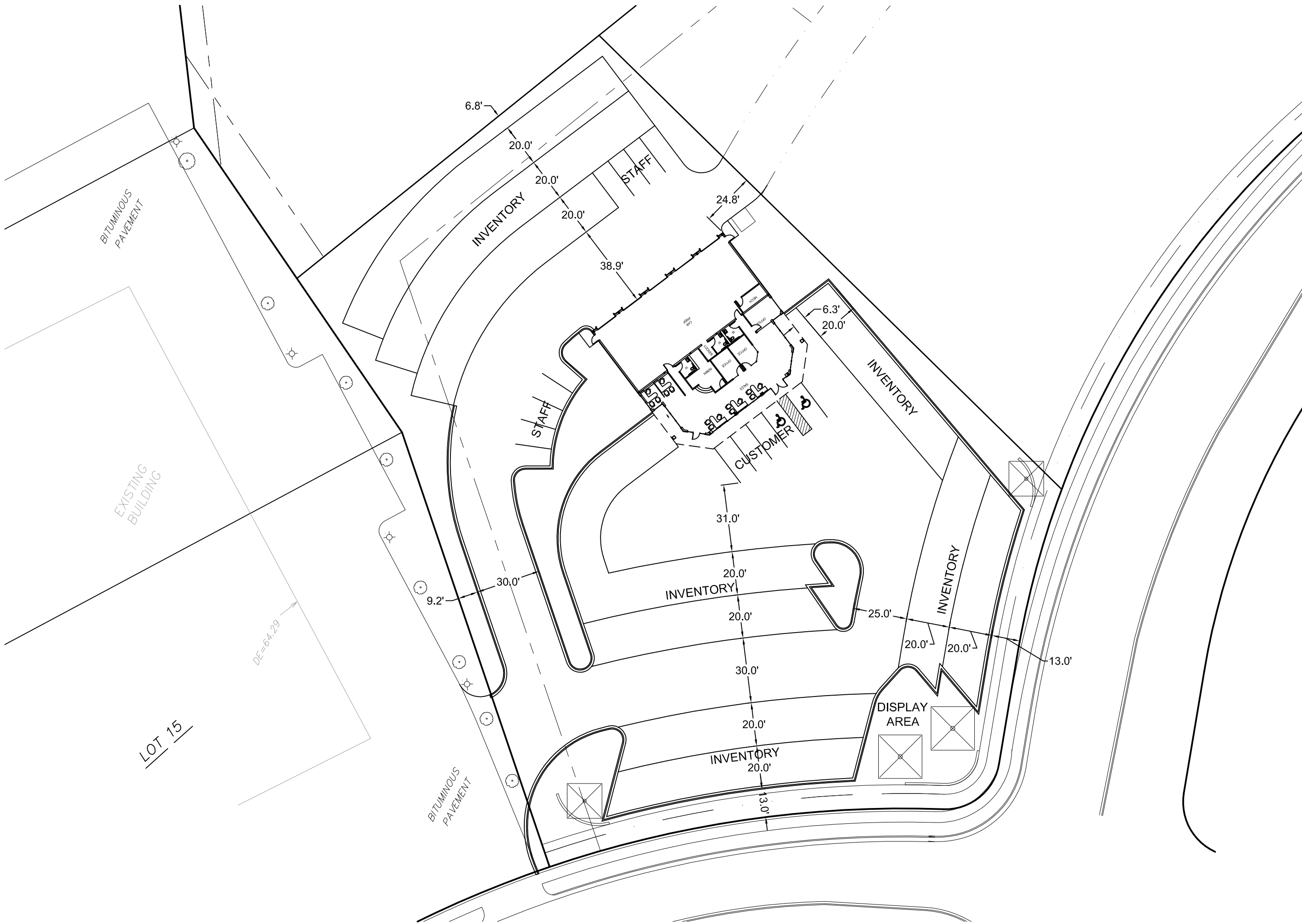
AERIAL PHOTO
DEVELOPMENT

DRAWING NUMBER:

DP-1.1

GOBEN CARS

East Springs Drive
Madison, Wisconsin



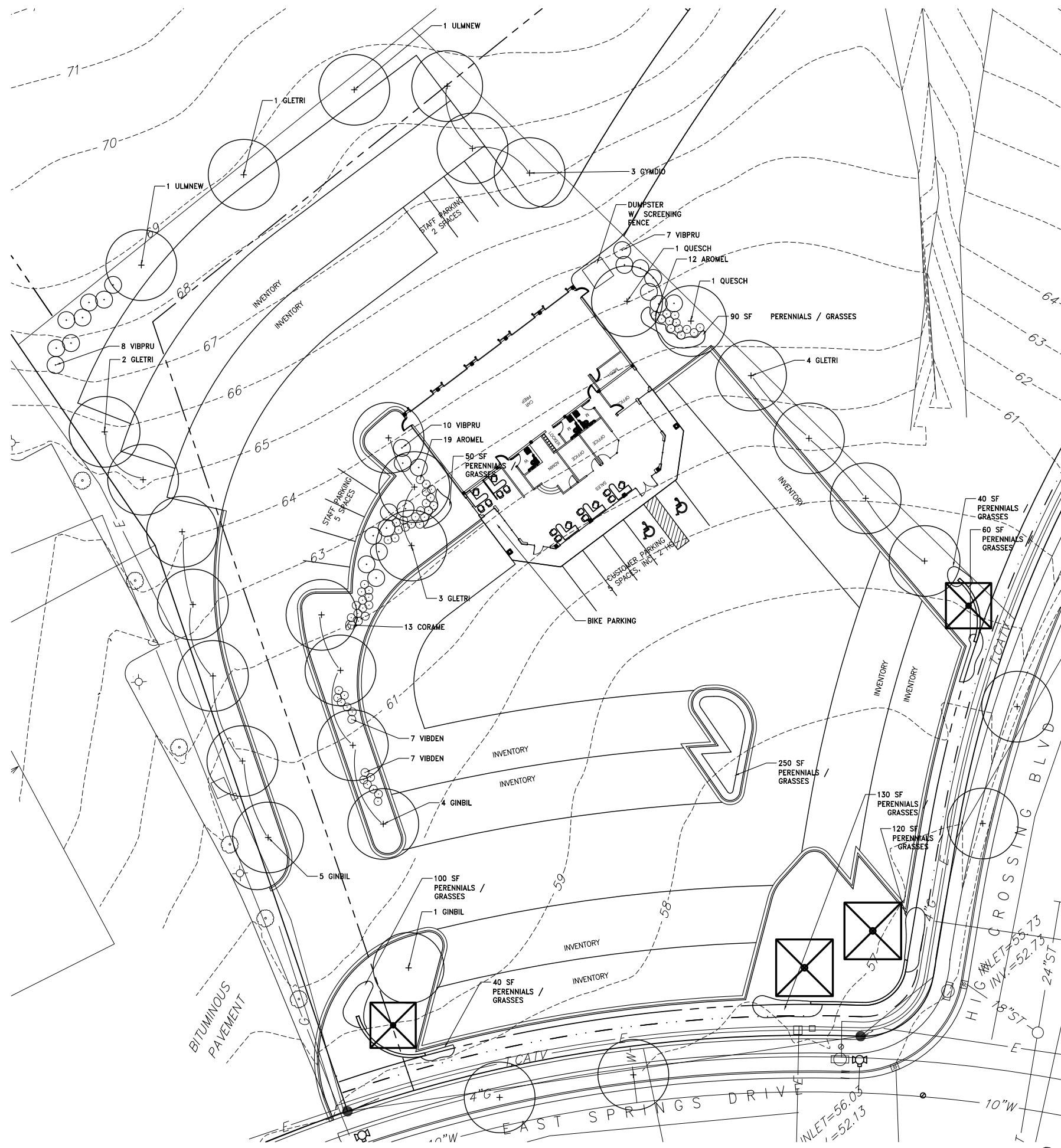
REVISIONS:

DATE: 12-19-12
SCALE: 1"=40'
PROJECT: K1214
DRAWN BY: JMS
DRAWING NAME:

SITE PLAN

DRAWING NUMBER:

C-1.0



A PLAN
REFER TO GRAPHIC SCALE

Quantity	Key	Scientific Name	Common Name	Size	Root	Spacing
27	TREES					
	CELOPP	<i>Celtis occidentalis</i> 'Prairie Pride'	Prairie Pride Hackberry	2.5' cal.	B&B	Plan
10	GLETIS	<i>Gleditsia triacanthos</i> var. <i>inermis</i> 'Skyline'	Thornless Common Honeylocust	2.5' cal.	B&B	Plan
10	GINBIL	<i>Ginkgo biloba</i>	Ginkgo biloba	2.5' cal.	B&B	Plan
3	GYMDIO	<i>Gymnocladus dioica</i> 'Expresso'	Expresso Kentucky Coffeetree	2.5' cal.	B&B	Plan
2	QUEMAC	<i>Quercus macrocarpa</i>	Bur Oak	2.5' cal.	B&B	Plan
2	ULMNEH	<i>Ulmus x 'New Horizon'</i>	Accolade Smoothleaf Elm	2.5' cal.	B&B	Plan
25	SMALL FLOWERING TREES					
	AMEGRA	<i>Amelanchier grandiflora</i>	Apple Serviceberry	4' ht.	B&B	Plan
	CRACIN	<i>Crataegus crus-galli</i> var. <i>inermis</i>	Thornless Cockspur Hawthorn	4' ht.	B&B	Plan
25	VIBPRU	<i>Viburnum prunifolium</i>	Blackhaw Viburnum	4' ht.	B&B	Plan
58	SHRUBS					
10	AROMEL	<i>Aronia melanocarpa</i>	Black Chokeberry	5 gal.	Cont.	Plan
10	CORAME	<i>Corylus americana</i>	American Hazelnut	5 gal.	Cont.	Plan
10	PHYOPU	<i>Physocarpus opulifolius</i>	Common Ninebark	5 gal.	Cont.	Plan
8	RHUAGL	<i>Rhus aromatica</i> 'Gro-low'	Grow-low Sumac	5 gal.	Cont.	Plan
10	SYRMPA	<i>Syringa meyeri</i> 'Palibin'	Palibin Lilac	5 gal.	Cont.	Plan
10	VIBDEN	<i>Viburnum dentatum</i>	Arrowwood Viburnum	5 gal.	Cont.	Plan
	Perennials					
15	ALLCER	<i>Allium cernuum</i>	Nodding Onion	gal.	Cont.	18"
15	ANECAN	<i>Anemone canadensis</i>	Meadow Anemone	gal.	Cont.	18"
15	ASCTUB	<i>Asclepias tuberosa</i>	Butterflyweed	gal.	Cont.	18"
15	ASTAZJ	<i>Aster azureus</i>	Sky Blue Aster	gal.	Cont.	18"
15	CORPAL	<i>Coreopsis palmata</i>	Prairie Coreopsis	gal.	Cont.	18"
15	ECHPUR	<i>Echinacea purpurea</i>	Purple Coneflower	gal.	Cont.	18"
15	EUPMGA	<i>Eupatorium maculatum</i> 'Gateway'	Spotted Joe Pye Weed	gal.	Cont.	18"
15	HEURIC	<i>Heuchera richardsonii</i>	Prairie Alum Root	gal.	Cont.	18"
15	LIAPYC	<i>Liatis pycnostachya</i>	Blazing Star	gal.	Cont.	18"
15	MISSGR	<i>Miscanthus sinensis</i> 'Gracillimus'	Maiden Grass	gal.	Cont.	18"
15	PANVRO	<i>Panicum virgatum</i> 'Rotstahbusch'	Red Switch Grass	gal.	Cont.	18"
15	PARINT	<i>Parthenium integrifolium</i>	Wild Quinine	gal.	Cont.	18"
15	PENDHR	<i>Penstemon digitalis</i> 'Husker Red'	Foxglove Beard Tongue	gal.	Cont.	18"
15	PETPUR	<i>Petalostemum purpureum</i>	Purple Prairie Clover	gal.	Cont.	18"
15	PHYVIR	<i>Physostegia virginiana</i>	Obedient Plant	gal.	Cont.	18"
15	RATPIN	<i>Ratibida pinnata</i>	Yellow Coneflower	gal.	Cont.	18"
15	RUDFGO	<i>Rudbeckia fulgida</i> 'Goldsturm'	Goldsturm Black-eyed Susan	gal.	Cont.	18"
15	SCHSCO	<i>Schizachyrium scoparium</i>	Little Bluestem	gal.	Cont.	18"
15	SEDHER	<i>Sedum 'Herbstfreude'</i>	Autumn Joy Sedum	gal.	Cont.	18"
15	SPOHET	<i>Sporobolus heterolepis</i>	Prairie Dropseed	gal.	Cont.	18"

B PLANT SCHEDULE

LANDSCAPE WORKSHEET
Parking Lots, Storage Areas and Loading Areas
(Section 28.04 Madison General Ordinance)

Project Location/Address: 2501 EAST SPRINGS DRIVE
Name of Project: GOBEN CARS
Owner/Contact: ARLAN KAY, AIA; ARCHITECTURE NETWORK, INC
Address: 116 E DAYTON ST; MADISON, WI 53703

FOR PARKING LOTS WITH GREATER THAN 20 STALLS, LANDSCAPE PLANS MUST BE STAMPED BY A REGISTERED LANDSCAPE ARCHITECT

I. Number of Trees Required
The number of trees required for a parking lot is based on the number of parking stalls. Using the Schedule for Required Trees on the reverse side of this worksheet, determine the number of trees required. (Example: One tree is required for 10 parking stalls).

Number of Parking Stalls: 14

Total Square Footage of the Storage Area Divided by Three Hundred (300) Square Feet: 181

Number of Canopy Shade Trees Required (2' - 2 1/2" Caliper) (See Schedule on reverse side): 13

TOTAL: 13

II. Number of Landscape Points Required
The number of points required is also based on the number of parking stalls. Using the Point Schedule for Landscape Elements on the reverse side of this worksheet, determine the number of points required. (Example: 49.5 points are required for 10 stalls). A point fraction of (.5) or less may be disregarded, while a fraction in excess of (.5) must be counted as one point. Thus: 49.5 points would be rounded down to 49.0 points required.

The number of points required for loading areas is (75) points for each loading berth. (See Schedule on reverse side): 0

TOTAL: 69

Tabulation of Points and Credits
Indicate below the quantity and points for all pertinent landscape elements. Also, credit information for boundary screening and any existing elements to be retained.

ELEMENT	POINT VALUE	QUANTITY	POINTS ACHIEVED	CREDITS	
				QUANTITY	POINTS
Canopy Tree: 2" - 2 1/2"	35	14	490		
Deciduous Shrub	2	58	116		
Evergreen Shrub	3	0			
Decorative Wall or Fence (per 10 L.F.)	5	0			
Earth Berm (per 10 L.F.)					
Avg. Height 30"	5	0			
Avg. Height 15"	2	0			
Evergreen Trees 3' height minimum	15	0			
Canopy Tree or Small Tree 1 1/2" - 2" Caliper (i.e., Crab, Hawthorn)	15	25	375		
Sub Totals			981	+	

TOTAL
= 981
Total No. of Points Provided (Equal to or greater than points required)

*Trees required in Part I above, are not to be included in the point count.

Approved by: _____ Date: _____

C LANDSCAPE WORKSHEET

Living Habitats
Landscape Architecture
Ecological Services
Environmental Planning
Custom Artworks
6457 North Sayre Avenue
Chicago, Illinois 60631
p: 773-4671634
www.livinghabitats.com

Gobben Cars

East Springs Drive
Madison, Wisconsin

REVISIONS:

DATE: 12/19/2012
SCALE: 1
PROJECT: 1"=20'-00"
DRAWN BY: AP / HN
DRAWING NAME:

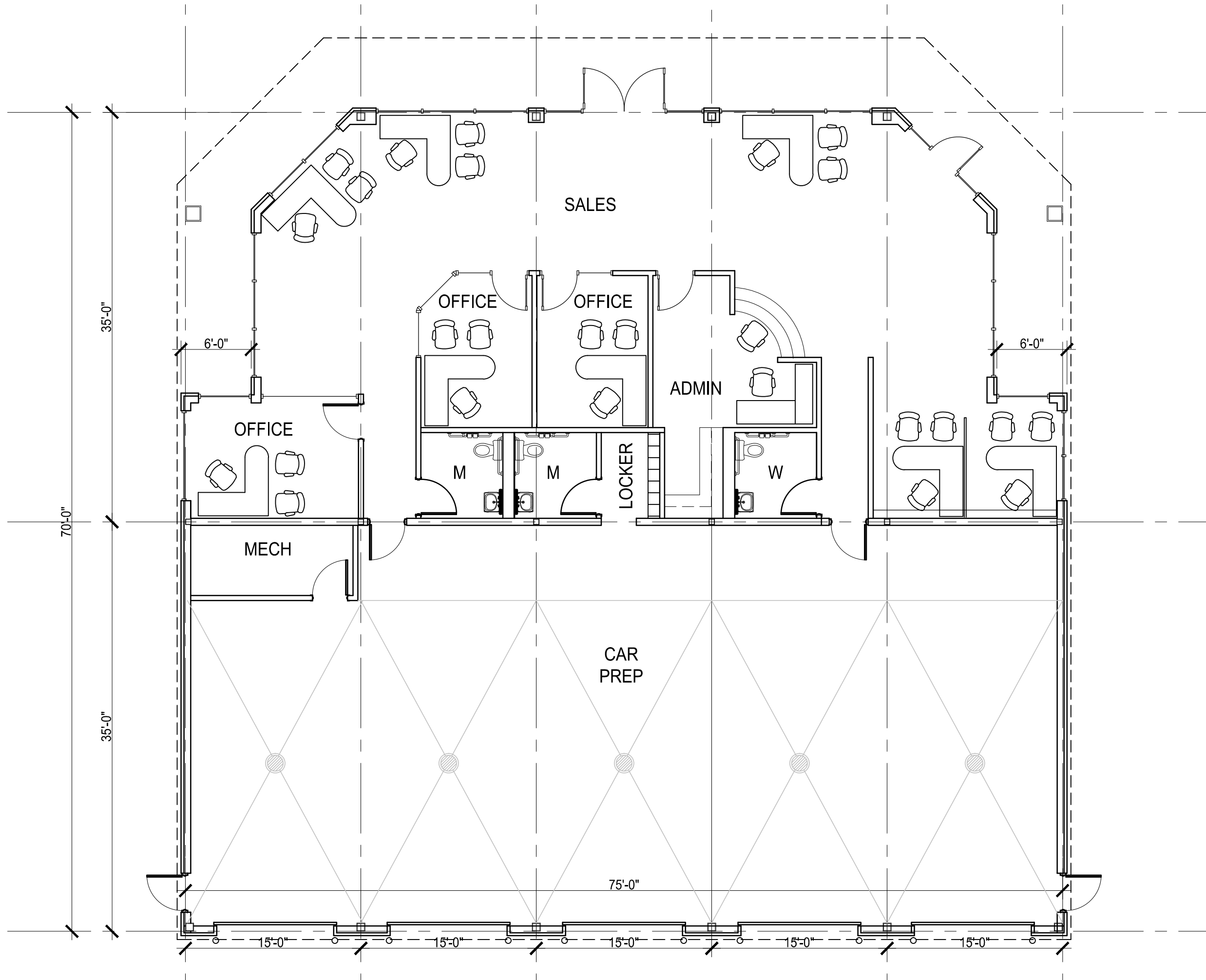
LANDSCAPE PLAN

DRAWING NUMBER:

L-1.0

GOBEN CARS

East Springs Drive
Madison, Wisconsin



REVISIONS:

DATE: 12-19-2012
SCALE: 1/8"=1'-0"-22X34=1/4"
PROJECT: K1214
DRAWN BY: KAC
DRAWING NAME:

FLOOR PLAN

DRAWING NUMBER:



Bright Red
(Typical)
Saddle Tan
(Typical)

FRONT ELEVATION



Bright Red
(Typical)
Saddle Tan
(Typical)

SIDE ELEVATION

GobEN CARS
East Springs Drive
Madison, Wisconsin

REVISIONS:

DATE: 12-19-2012
SCALE: 1/8"=1'-0"
PROJECT: K1214
DRAWN BY: KAC
DRAWING NAME:

BUILDING ELEVATIONS

DRAWING NUMBER:

A2.1



REAR ELEVATION



SIDE ELEVATION

Goben CARS
East Springs Drive
Madison, Wisconsin

REVISIONS:

DATE: 12-19-2012
SCALE: 1/8"=1'-0"
PROJECT: K1214
DRAWN BY: KAC
DRAWING NAME:

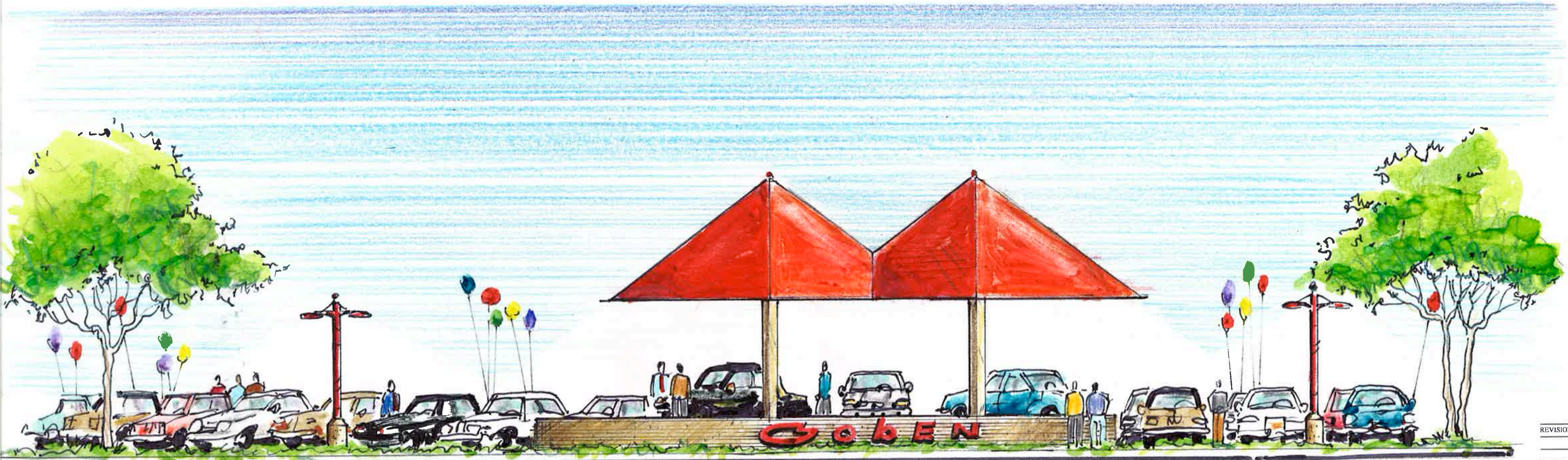
BUILDING ELEVATIONS

DRAWING NUMBER:

A2.2

Goben Cars

East Springs Drive
Madison, Wisconsin



CORNER VIEW

1" = 10'

REVISIONS:

NO.	DESCRIPTION

DATE: 12-19-2012

SCALE: 1/8"=1'-0"

PROJECT: K1214

DRAWN BY: DB

DRAWING NAME:

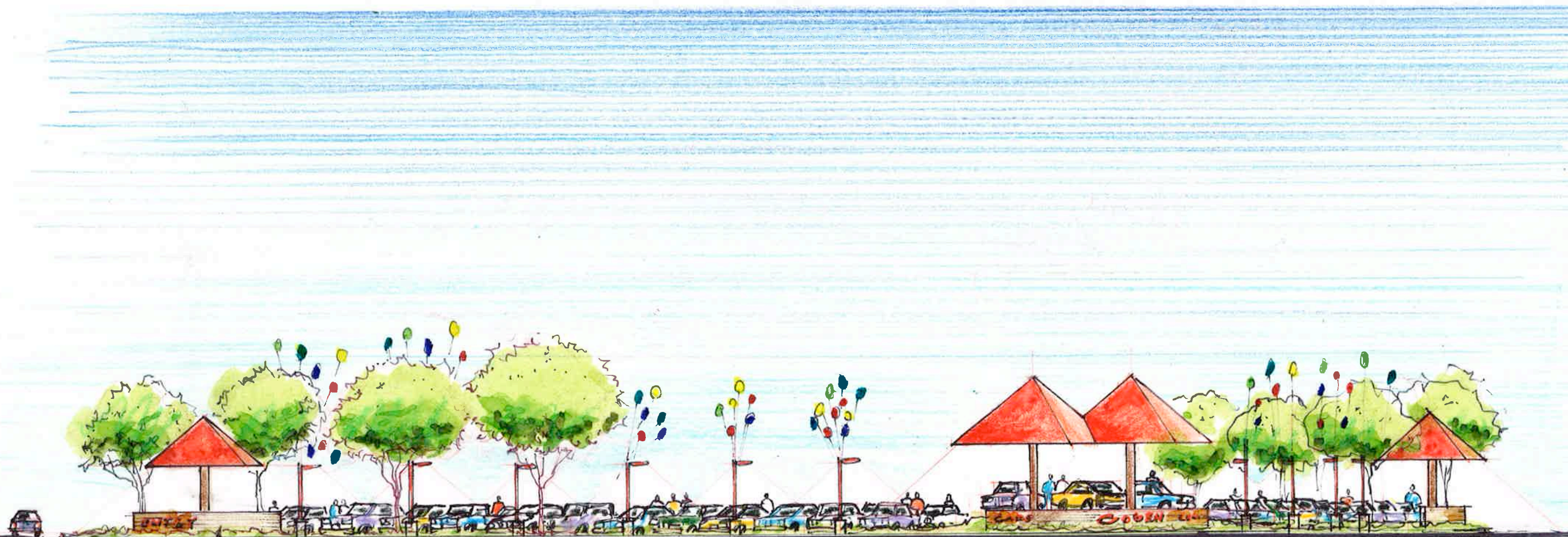
SITE VIEW from corner
of High Crossing Blvd
East Springs Drive

DRAWING NUMBER:

A3.1

Gobben CARS

East Springs Drive
Madison, Wisconsin



Access Drive

Entry Sign & Canopy

East Spring Drive

Corner

High Crossing Boulevard

VIEW ALONG EAST SPRING DRIVE.

1" = 20'

REVISIONS:

DATE: 12-19-2012

SCALE: -

PROJECT: K1214

DRAWN BY: DB

DRAWING NAME:

SITE VIEW from East Springs Drive

DRAWING NUMBER:

A3.2