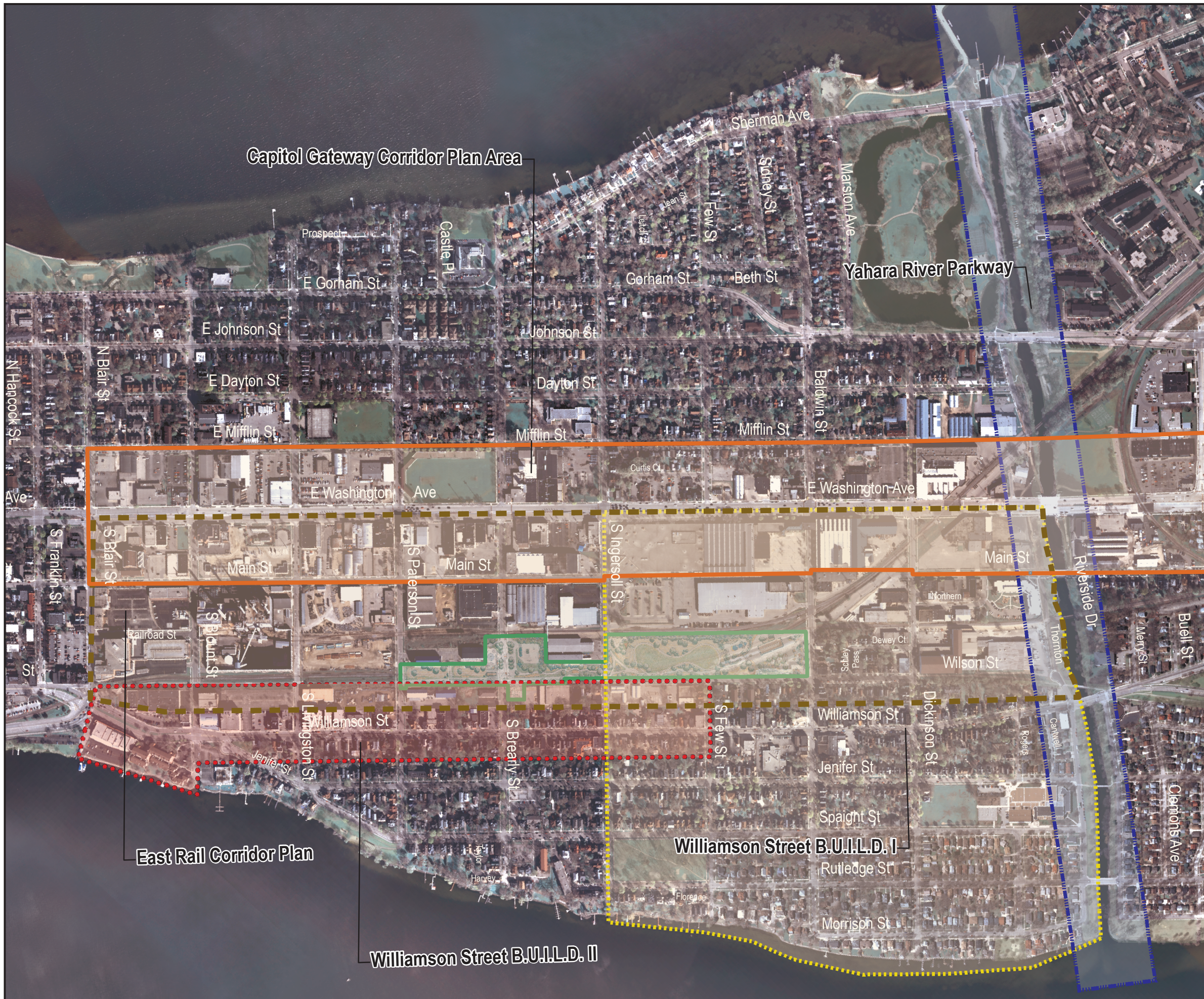


Figure 5
Central Park
 Adjacent Area Plans
 April 2008



-  Central Park as Adopted by the Center For Resilient Cities (2004)
-  Capitol Gateway Corridor
-  Yahara River Parkway
-  Williamson St B.U.I.L.D. I
-  Williamson St B.U.I.L.D. II
-  East Rail Corridor Plan
-  Existing Park, Open Space or Drainage

Data Source:
 City of Madison Department of Planning & Community & Economic Development, Planning Division
 Concept Plan for Central Park

