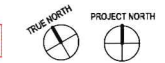


REFER TO SUPPLEMENTAL ECO-LODGE EXHIBIT FOR ADDITIONAL INFORMATION



1 ARCHITECTURAL SITE PLAN
SCALE: 1" = 40'-0"

GENERAL SHEET NOTES

- A. REFER TO THE A0-X SERIES DRAWINGS FOR ARCHITECTURAL GENERAL NOTES, DRAWING REFERENCES AND MATERIAL SYMBOLS AS WELL AS ABBREVIATIONS USED ON THIS DRAWING.
- B. REFER TO AND COORDINATE WITH CIVIL, LANDSCAPE, STRUCTURAL, MECHANICAL AND ELECTRICAL DRAWINGS FOR ADDITIONAL SITE INFORMATION NOT SHOWN ON THIS DRAWING.
- C. PROVIDE AUTOMATIC KEY OVERRIDE IN KNOX BOXES AND/OR KNOX SWITCHES AT ANY ENTRY GATES (BOTH INSIDE AND OUTSIDE) AND BUILDING ENTRIES AS REQUIRED BY FIRE DEPARTMENT. CONTRACTOR TO VERIFY PERMIT REQUIREMENTS FROM FIRE DEPARTMENT.
- D. PROVIDE FIRE LANS BOWAGE AND PAINT ALL CLASSES ADJACENT TO EXISTING AND NEW FIRE HYDRANTS AND AS REQUIRED BY THE CITY OF MADISON FIRE DEPARTMENT. REFER TO CIVIL AND FIRE DRAWINGS FOR ADDITIONAL INFORMATION.
- E. REFER TO LANDSCAPE DRAWINGS FOR HANDSCAPE DESIGN.
- F. REFER TO LANDSCAPE DRAWINGS FOR SITE FENCING DESIGN.
- G. ARCHITECTURAL SITE PLAN DIMENSIONS FOR COORDINATION PURPOSES ONLY. REFER TO CIVIL AND LANDSCAPE DRAWINGS FOR FINAL LAYOUT AND DIMENSIONS FOR SITE.

GRAPHIC LEGEND

SEALS AND SIGNATURES

NOT FOR CONSTRUCTION



SHEET TITLE
ARCHITECTURAL SITE PLAN - OVERALL

PROJECT NUMBER
20737.000

A1.1.1

SHEET NUMBER

GARVER FEED MILL
Madison, Wisconsin

3241 GARVER GREEN
MADISON, WI 53704

Owner:
GARVER FEED MILL LLC
1930 W. Chicago Avenue Ste. 200
Chicago, IL 60642



BAUM REVISION
real estate development

SMITHGROUP JJR



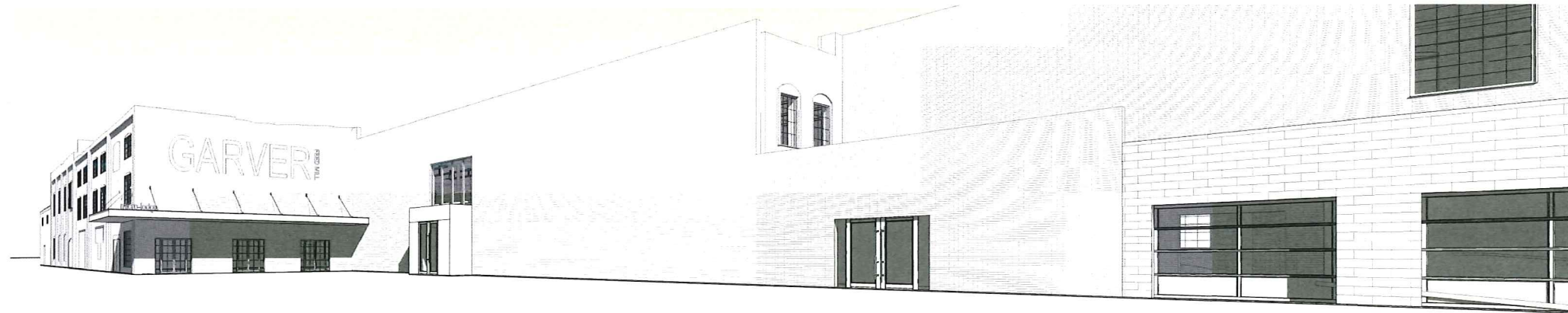
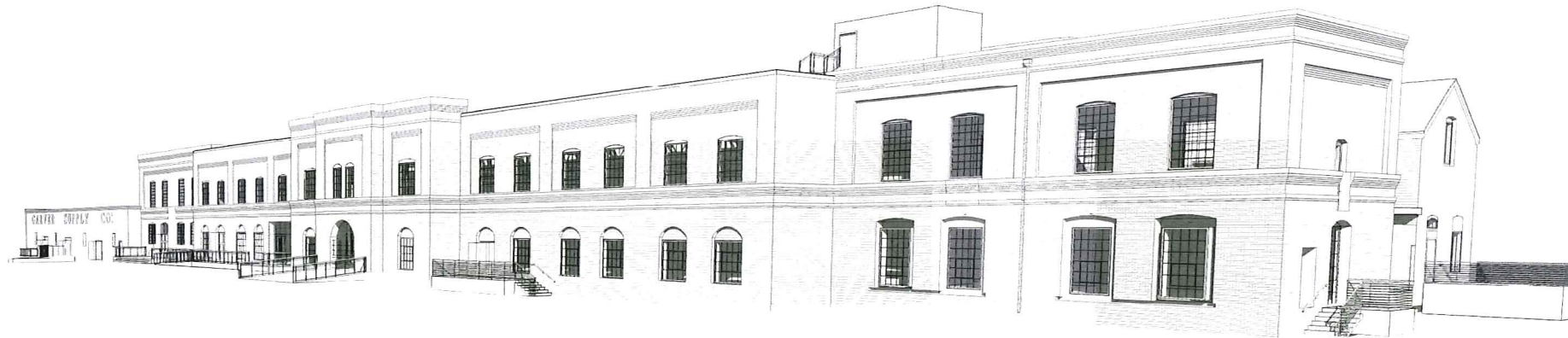
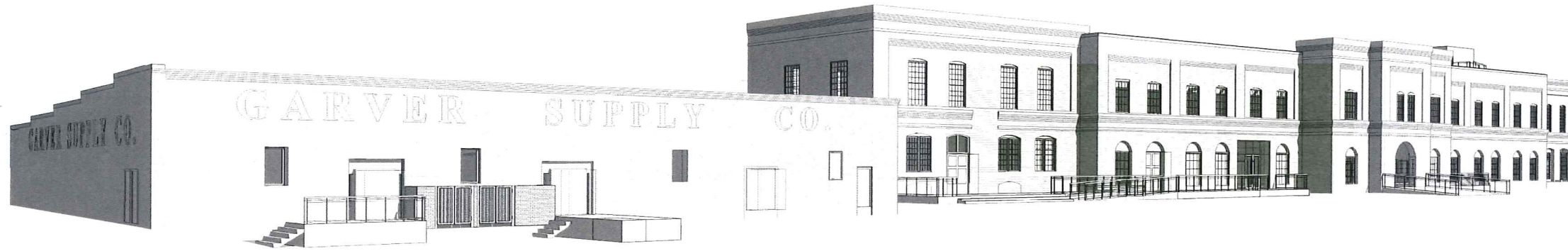
STRUCTURAL
integrity LLC

design coalition
Architects • Madison, WI

BACHMANN
CONSTRUCTION

ISSUED FOR	REV	DATE

5/10/2016 10:46:55 AM GRLM
Pld Date:



GARVER FEED MILL
Madison, Wisconsin

3241 GARVER GREEN
MADISON, WI 53704
Owner:
GARVER FEED MILL, LLC
1030 W. Chicago Avenue Ste. 209
Chicago, IL 60642



BAUM REVISION
real estate development

SMITHGROUP JJR



design coalition
Architects • Madison, WI



ISSUED FOR	REV	DATE

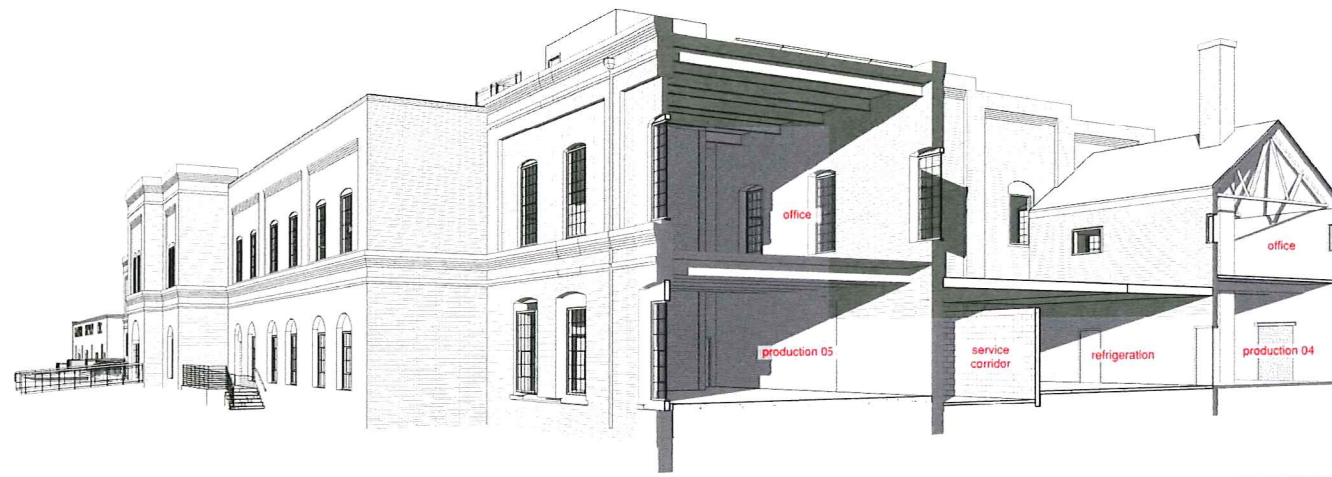
SEALS AND SIGNATURES

NOT FOR CONSTRUCTION



SHEET TITLE
PERSPECTIVES

PROJECT NUMBER 29737.000
SHEET NUMBER **A1.2.0**



GARVER FEED MILL
Madison, Wisconsin

3241 GARVER GREEN
MADISON, WI 53704
Owner: GARVER FEED MILL LLC
1000 W. Chicago Avenue Ste 209
Chicago, IL 60642



BAUM REVISION
real estate development

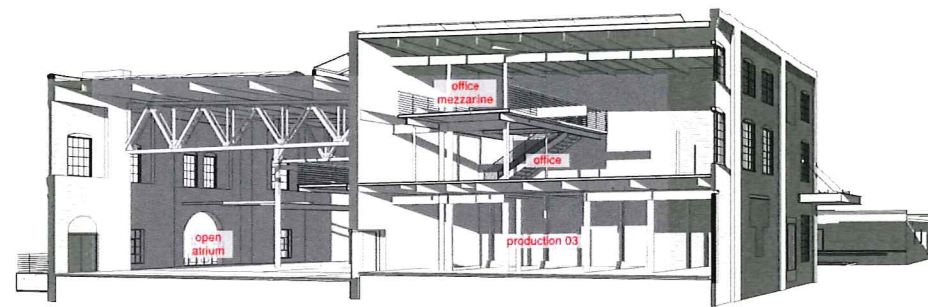
SMITHGROUP JJR



STRUCTURAL integrity

design coalition
Architects • Madison, WI

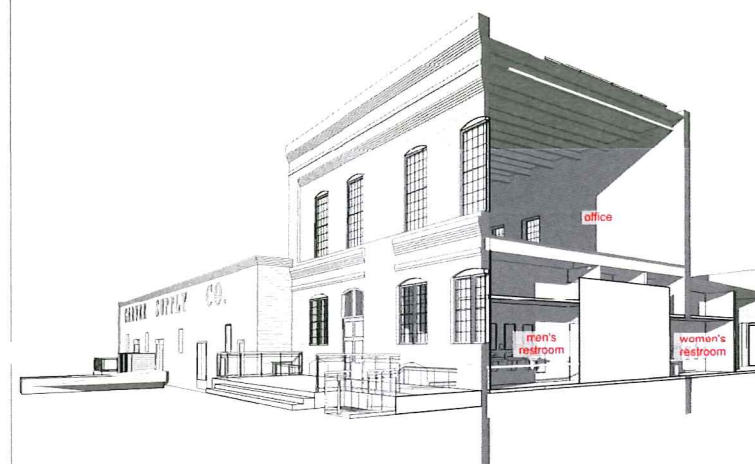
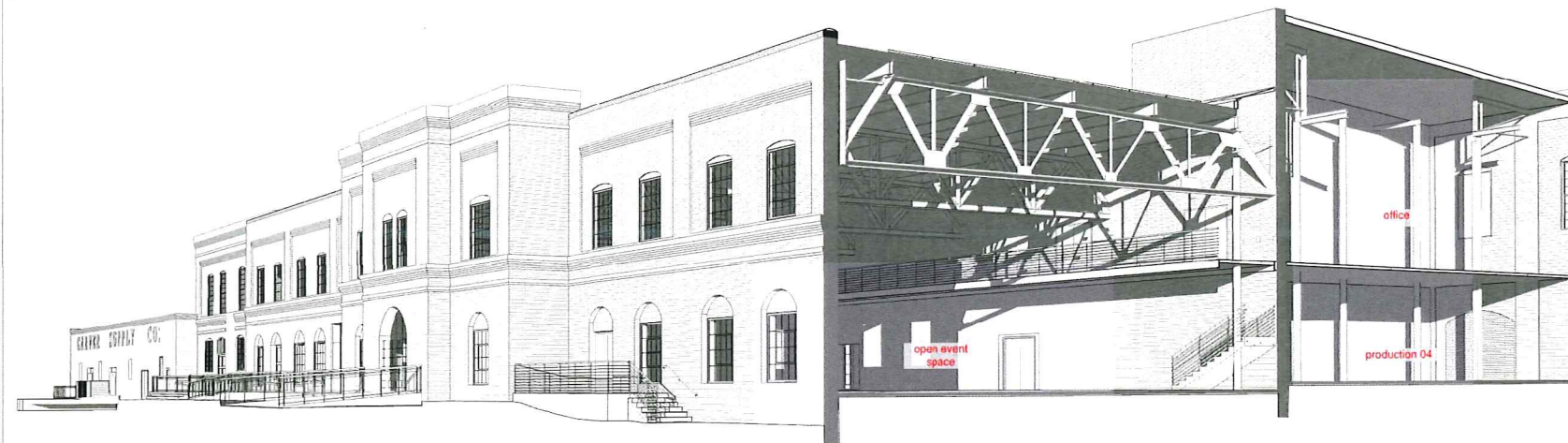
BACHMANN
CONSTRUCTION



ISSUED FOR	REV	DATE

SEALS AND SIGNATURES

NOT FOR CONSTRUCTION



SHEET TITLE
PERSPECTIVE SECTIONS

PROJECT NUMBER: 20737.000
SHEET NUMBER: **A1.2.1**

GRAPHIC LEGEND



3241 GARVER GREEN
MADISON, WI 53704
Client:
GARVER FEED MILL LLC
1000 W. Chicago Avenue Ste. 200
Chicago, IL 60642



BAUM REVISION
real estate development



GENERAL SHEET NOTES

- A. REFER TO THE A2.X SERIES SHEETS FOR ARCHITECTURAL GENERAL NOTES, DRAWING, REFERENCE AND MATERIAL SYMBOLS, ABBREVIATIONS, AS WELL AS DIMENSIONING CONVENTIONS USED ON THIS SHEET.
- B. FOR BASIC LIFE, SAFETY AND CODE INFORMATION APPLYING TO THIS PROJECT, REFER TO THE G2.X SERIES SHEETS LOCATED PER THE PROJECT SHEET INDEX.
- C. REFER TO THE A2.X SERIES SHEETS FOR THE REFLECTED CEILING PLANS.
- D. REFER TO THE A2.2.X SERIES SHEETS FOR PARTITION SYSTEMS TYPES AND DETAILS.
- E. REFER TO THE A2.3.X SERIES SHEETS FOR THE INTERIOR OPENING SCHEDULE(S), TYPES, AND DETAILS.
- F. REFER TO THE 'A' SERIES SHEETS FOR INTERIOR FINISH INFORMATION.
- G. REFER TO THE 'A' SERIES SHEETS FOR INTERIOR FURNISHING INFORMATION.
- H. EXISTING EXPOSED STEEL STRUCTURE TO BE PAINTED BLACK.

REFERENCE KEYNOTES

03.30.00.A10	CONCRETE FLOOR SLABS OVER INSULATION
07.54.73.A01	TPO MEMBRANE ROOFING
10.71.13.A01	STEEL FRAMED EXTERIOR SHADE DEVICE, REF. STRUCTURAL FOR ADDITIONAL INFORMATION.

ISSUED FOR	REV	DATE

SEALS AND SIGNATURES

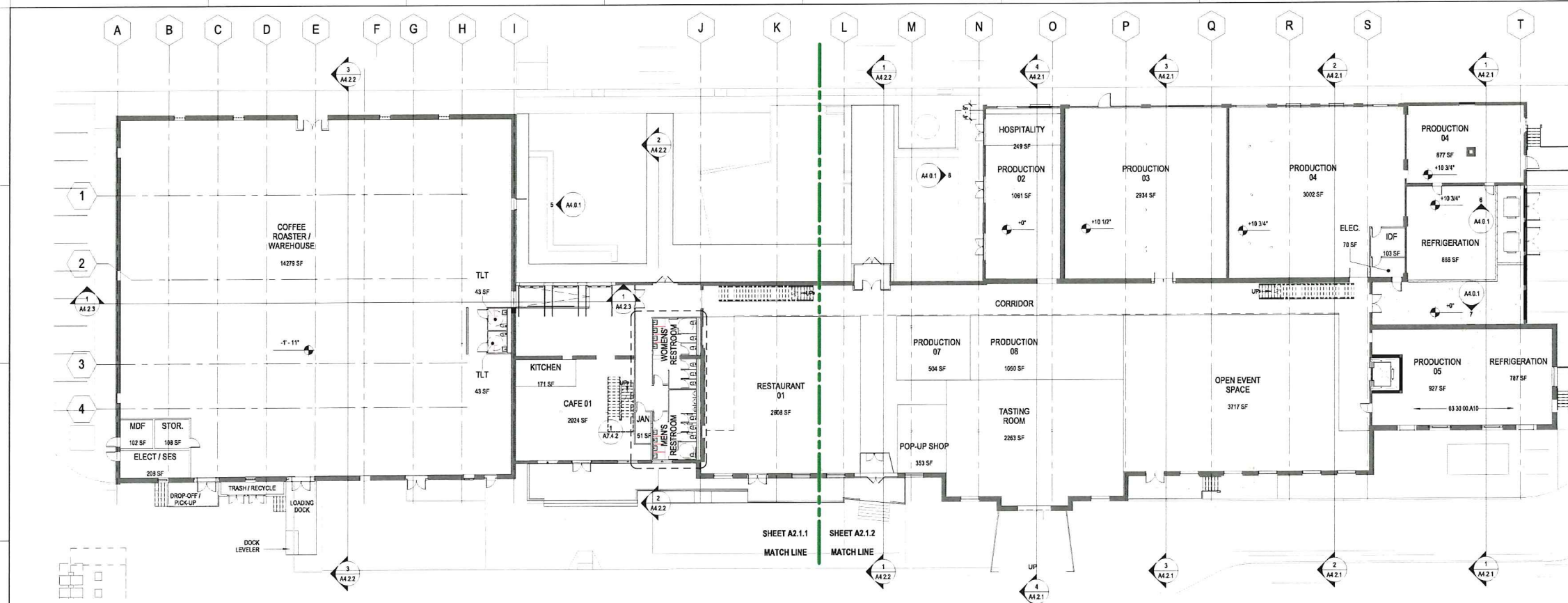
NOT FOR CONSTRUCTION

○ SHEET KEYNOTES

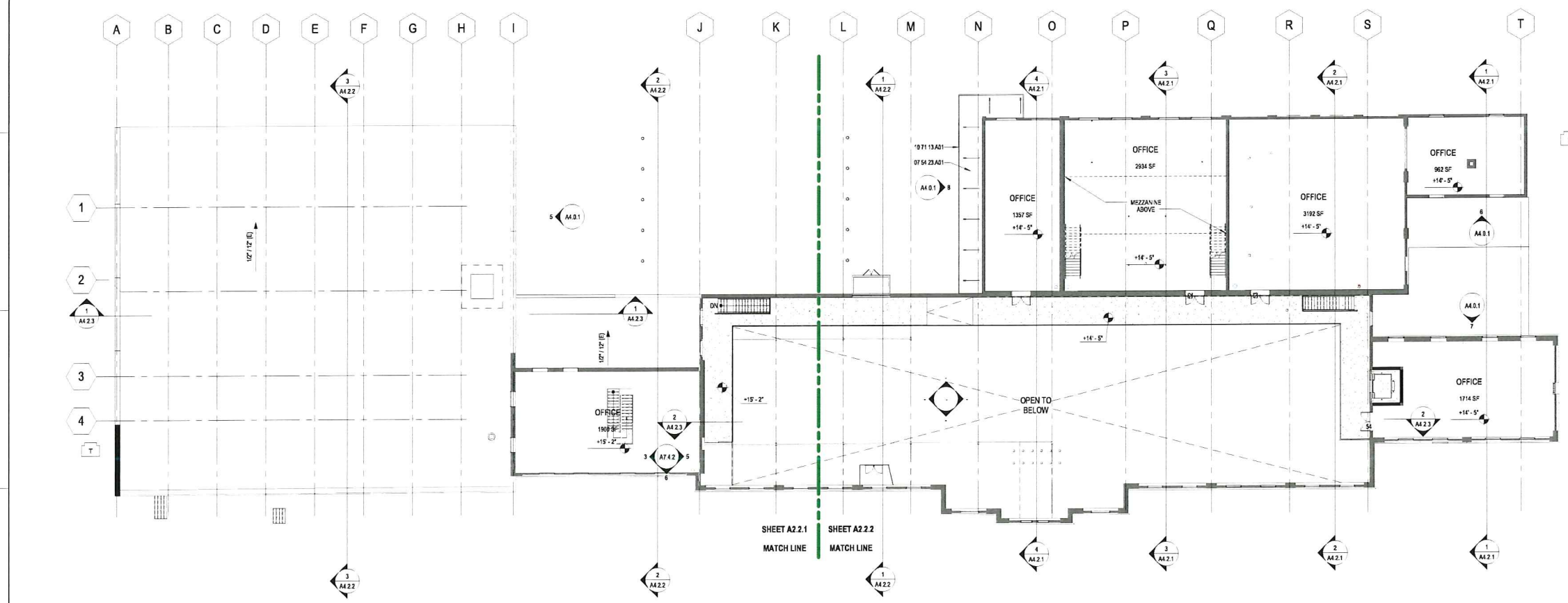


SHEET TITLE
LEVEL 1 & 2 FLOOR PLANS - OVERALL

20737.000
PROJECT NUMBER
A2.1.0
SHEET NUMBER

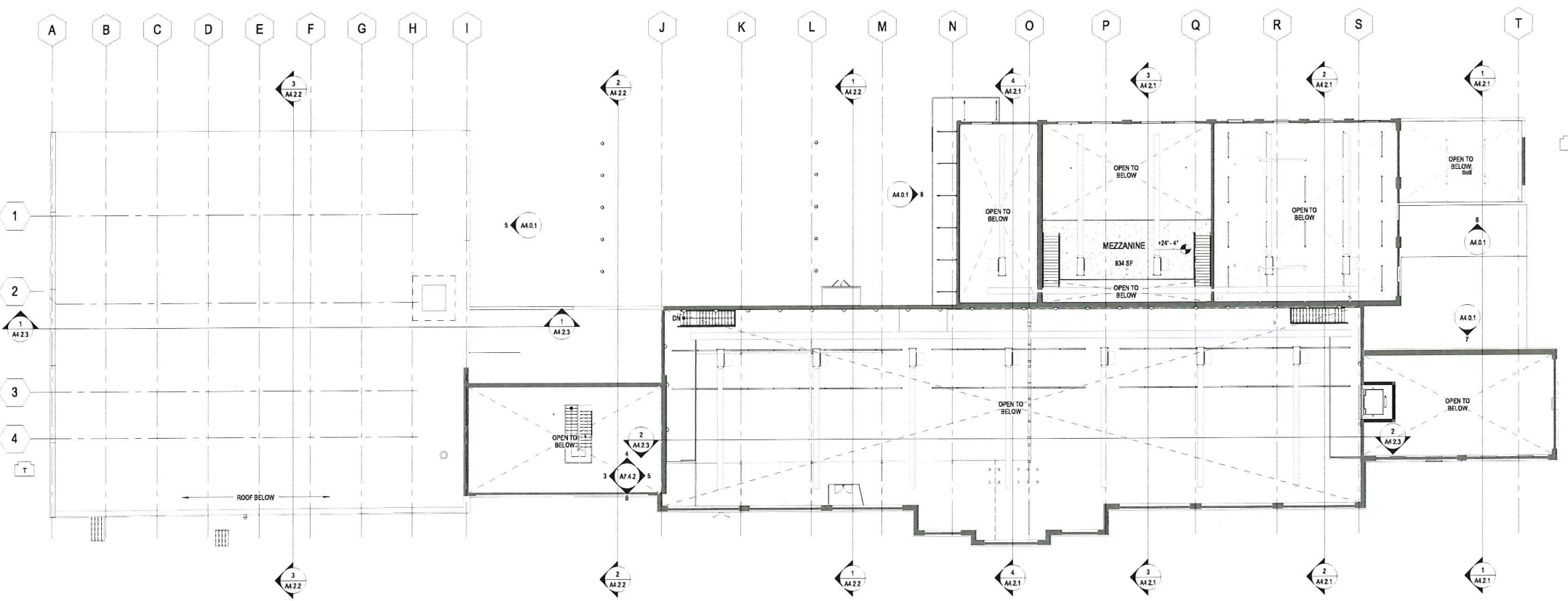


1 LEVEL 1 FLOOR PLAN - OVERALL
SCALE: 1/16" = 1'-0"

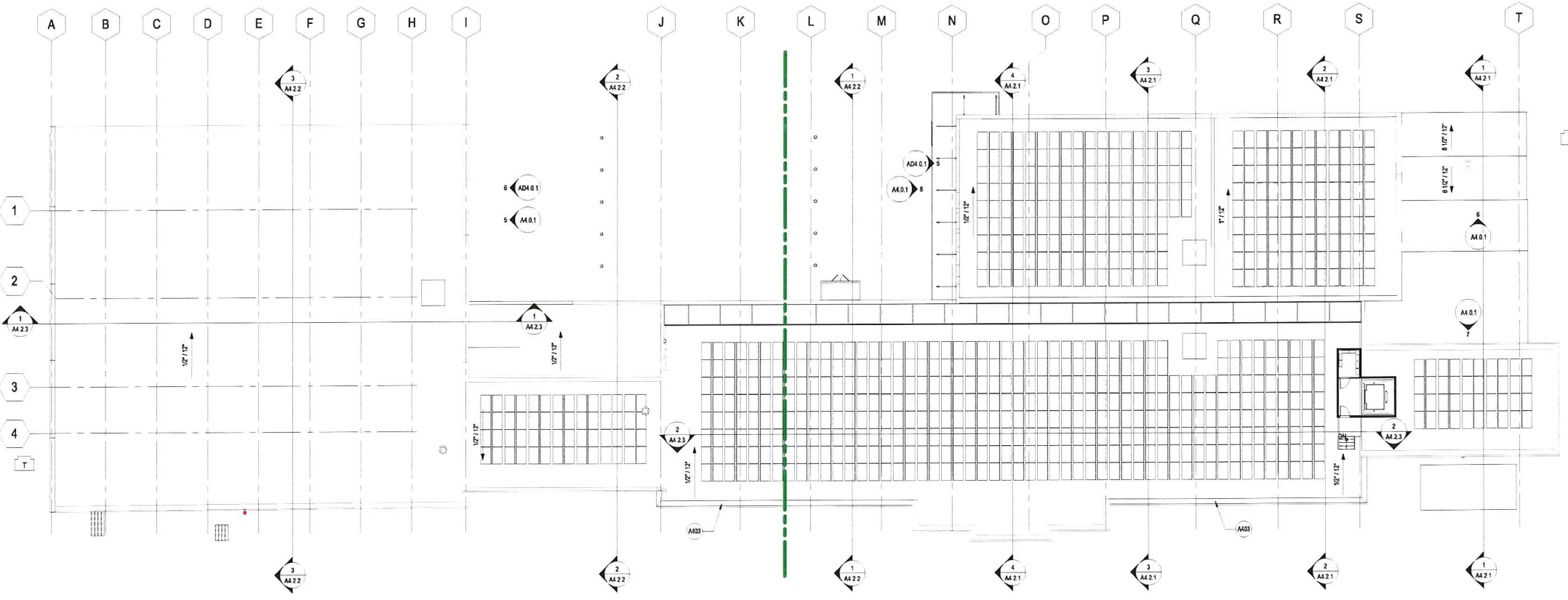


2 LEVEL 2 FLOOR PLAN - OVERALL
SCALE: 1/16" = 1'-0"

P10.Dwg: 5/9/2016 4:10:18 PM GRBM



1 MEZZANINE LEVEL
SCALE 1/8" = 1'-0"



2A ROOF PLAN - OVERALL
SCALE 1/8" = 1'-0"

GRAPHIC LEGEND

GENERAL SHEET NOTES

- A. REFER TO THE A-X SERIES SHEETS FOR ARCHITECTURAL GENERAL NOTES, DRAWING, REFERENCE AND MATERIAL SYMBOLS, ABBREVIATIONS, AS WELL AS DIMENSIONING CONVENTIONS USED ON THIS SHEET.
- B. REFER TO AND COORDINATE WITH STRUCTURAL, MECHANICAL AND ELECTRICAL DRAWINGS FOR ADDITIONAL INFORMATION NOT SHOWN ON THIS SHEET.
- C. FOR BASIC LIFE SAFETY AND CODE INFORMATION APPLYING TO THIS PROJECT, REFER TO THE G-X SERIES SHEETS LOCATED PER THE PROJECT SHEET INDEX.
- D. REFER TO THE "REFERENCE ELEVATION DEFINITIONS" LOCATED IN THE A-X SERIES SHEETS FOR ROOF ELEVATION DEFINITIONS.
- E. REFER TO THE A-X SERIES SHEETS FOR ROOFING DETAILS.
- F. ROOF ASSEMBLIES SHALL BE MINIMUM OF CLASS B FIRE CLASSIFICATION, OR AS SPECIFIED IN THE PROJECT MANUAL.



3241 GARVER GREEN
MADISON, WI 53704
Office:
GARVER FEED M.L.L.C.
1003 W. Chicago Avenue Ste. 200
Chicago, IL 60642



BAUM REVISION
real estate development

SMITHGROUP JJR



design coalition
Architects • Madison, WI



REFERENCE KEYNOTES

ISSUED FOR	REV	DATE

○ SHEET KEYNOTES

- A403 ADD (5) ADDITIONAL BRICK COURSES OF SALVAGED BRICK AS REQUIRED TO ALLOW FOR FLASHING AT BACK OF PARAPET (ENTIRE LENGTH OF WALL WHERE SHOWN). REPLACE PARAPET CAP WHERE OCCURS.

SEALS AND SIGNATURES
NOT FOR CONSTRUCTION



SHEET TITLE
MEZZANINE & ROOF PLANS

PROJECT NUMBER
20737.000
A2.3.0
SHEET NUMBER

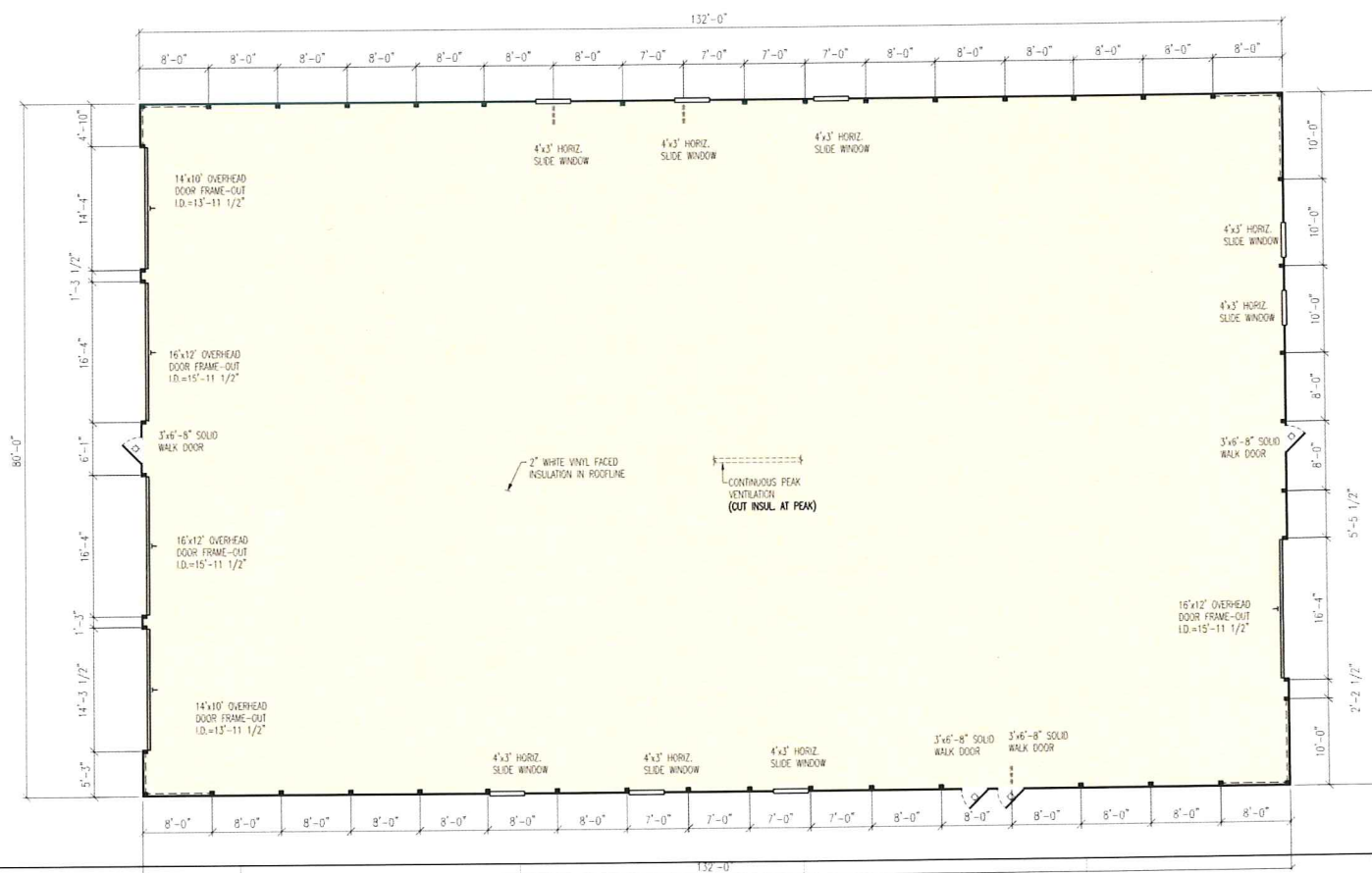
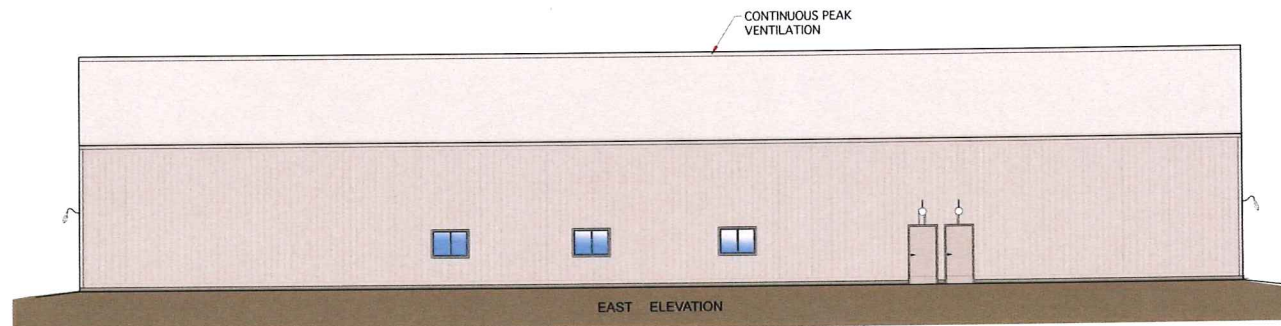
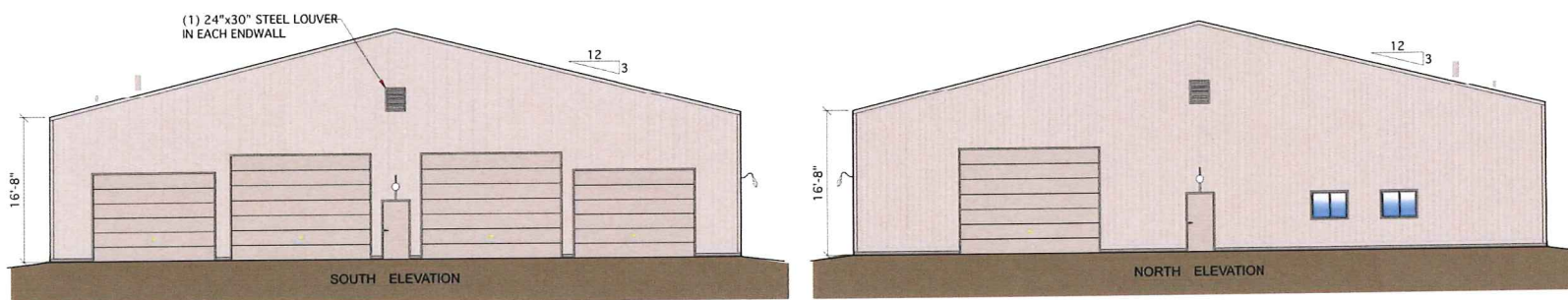
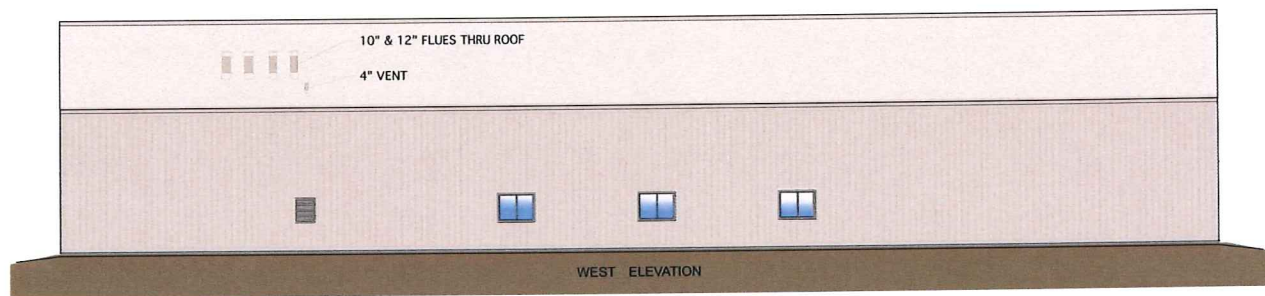
5/9/2016 4:10:22 PM GRM
Plot Date:



ISSUED FOR	REV	DATE

SEALS AND SIGNATURES

NOT FOR CONSTRUCTION





BAUM REVISION
real estate development

SMITHGROUP JJR



design coalition
Architects • Madison, WI



GRAPHIC LEGEND

GENERAL SHEET NOTES

- REFER TO THE ADX SERIES SHEETS FOR ARCHITECTURAL GENERAL NOTES, DRAWING, REFERENCE AND MATERIAL SYMBOLS, ABBREVIATIONS, AS WELL AS DIMENSIONING CONVENTIONS USED ON THIS SHEET.
- VERTICAL ELEVATIONS ON THIS PLAN ARE SHOWN RELATIVE TO THE FINISH FLOOR DESIGN REFERENCE ELEVATION UNLESS OTHERWISE NOTED. REFER TO THE REFERENCE ELEVATION DEFINITIONS LOCATED IN THE ADX SERIES SHEETS.
- FOR BAS & LIFE SAFETY AND CODE INFORMATION APPLYING TO THIS PROJECT, REFER TO THE GCX SERIES SHEETS LOCATED PER THE PROJECT SHEET INDEX.
- REFER TO THE ADX SERIES SHEETS FOR TYPICAL RULES AND REQUIREMENTS COVERING THE LOCATION OF CEILING ITEMS SHOWN BUT NOT DIMENSIONED ON THE REFLECTED CEILING PLANS.
- ALL SUSPENDED ACOUSTIC TILE GRID CEILING SYSTEMS SHALL BE CENTERED IN ROOMS UNLESS OTHERWISE NOTED.
- REFER TO AND COORDINATE WITH PLUMBING, MECHANICAL, AND ELECTRICAL DRAWINGS FOR ADDITIONAL INFORMATION NOT SHOWN ON THIS SHEET.
- REFER TO THE A2.1 X SERIES SHEETS FOR PARTITION TYPE DESIGNATIONS.
- REFER TO THE AF SERIES SHEETS FOR INTERIOR FINISH INFORMATION.

REFERENCE KEYNOTES

ISSUED FOR	REV	DATE

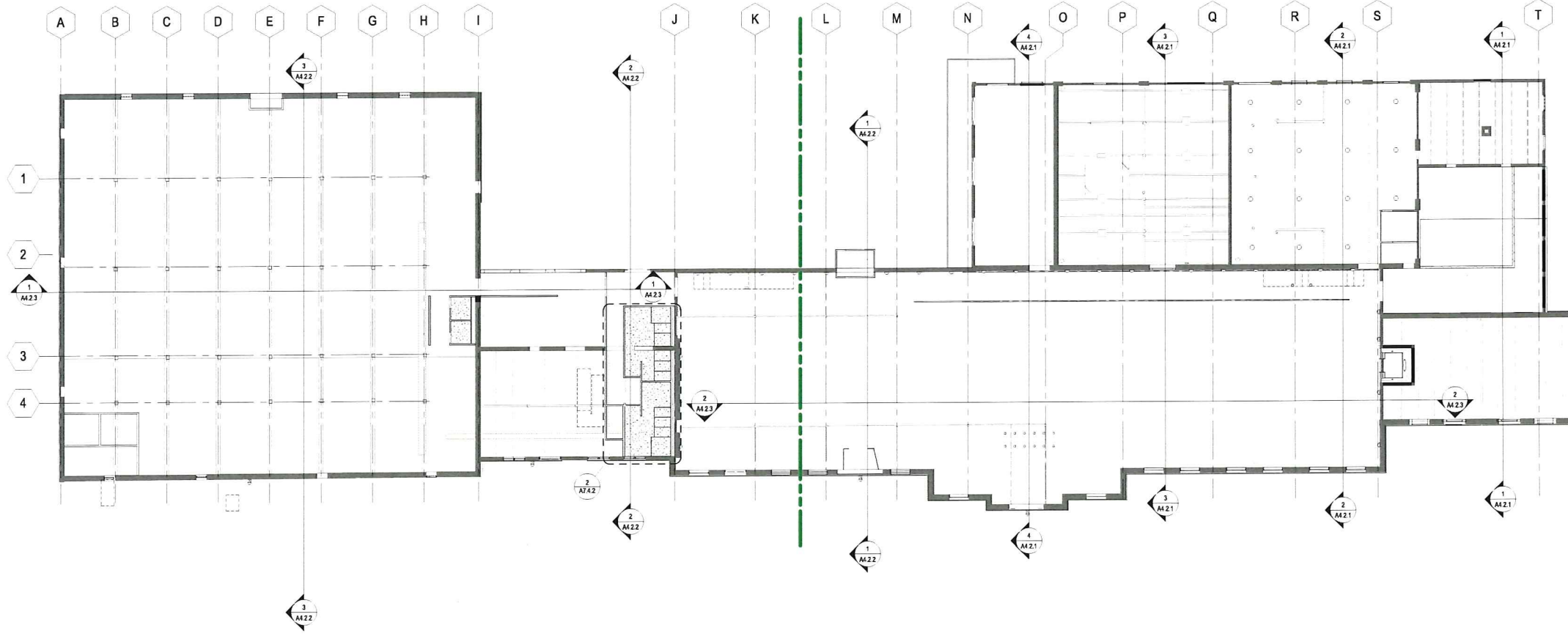
SEALS AND SIGNATURES
NOT FOR CONSTRUCTION

SHEET KEYNOTES

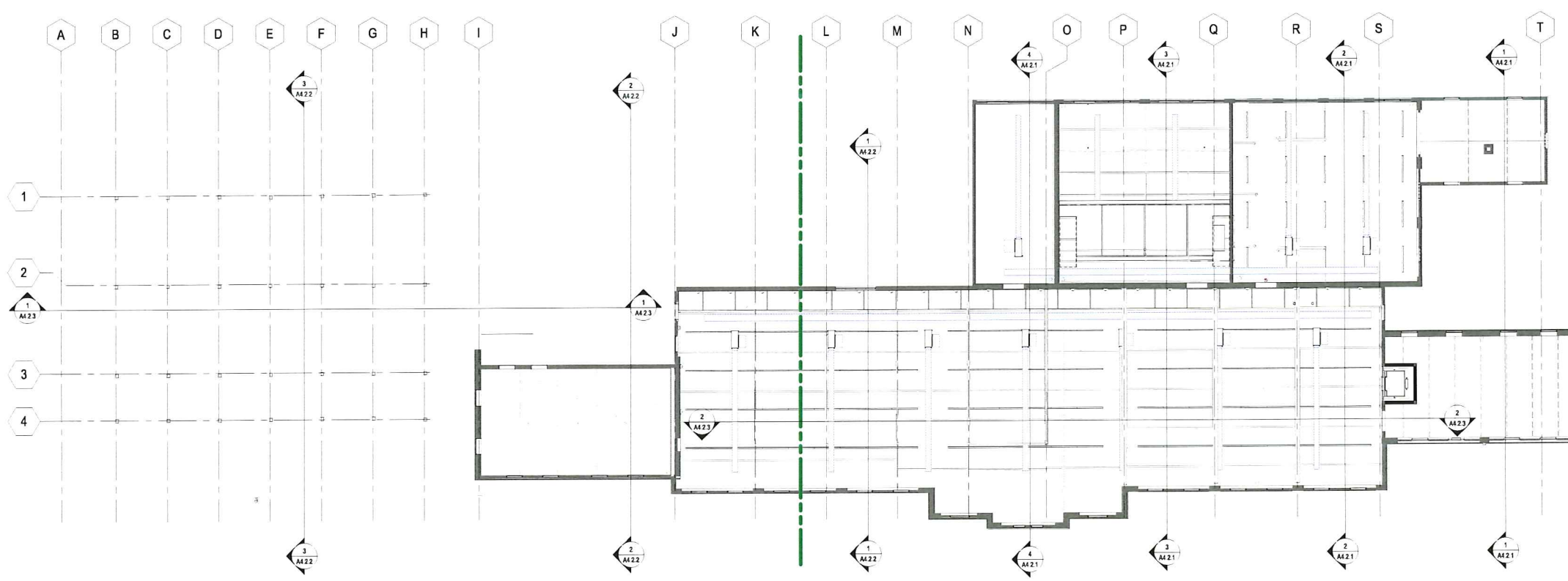


SHEET TITLE
LEVEL 1 & 2 REFLECTED CEILING PLANS - OVERALL

PROJECT NUMBER: 20737.000
SHEET NUMBER: **A3.1.0**



1 LEVEL 1 REFLECTED CEILING PLAN - OVERALL
SCALE: 1/8" = 1'-0"



2 LEVEL 2 REFLECTED CEILING PLAN - OVERALL
SCALE: 1/8" = 1'-0"



BAUM REVISION
real estate development

SMITHGROUP JJR



STRUCTURAL
integrity
INC.

design coalition
Architects • Madison, WI



GENERAL SHEET NOTES

- A. REFER TO THE A4.X SERIES SHEETS FOR ARCHITECTURAL GENERAL NOTES, DRAWING REFERENCE AND MATERIAL SYMBOLS, ABBREVIATIONS, AS WELL AS DIMENSIONING CONVENTIONS USED ON THIS SHEET.
- B. REFER TO AND COORDINATE WITH STRUCTURAL, MECHANICAL, PLUMBING, AND ELECTRICAL FOR ADDITIONAL INFORMATION NOT SHOWN ON THIS SHEET.
- C. REFER TO AND COORDINATE WITH CIVIL DRAWINGS FOR ALL FINISH GRADES.

REFERENCE KEYNOTES

SHEET KEYNOTES

ISSUED FOR	REV	DATE

SEALS AND SIGNATURES

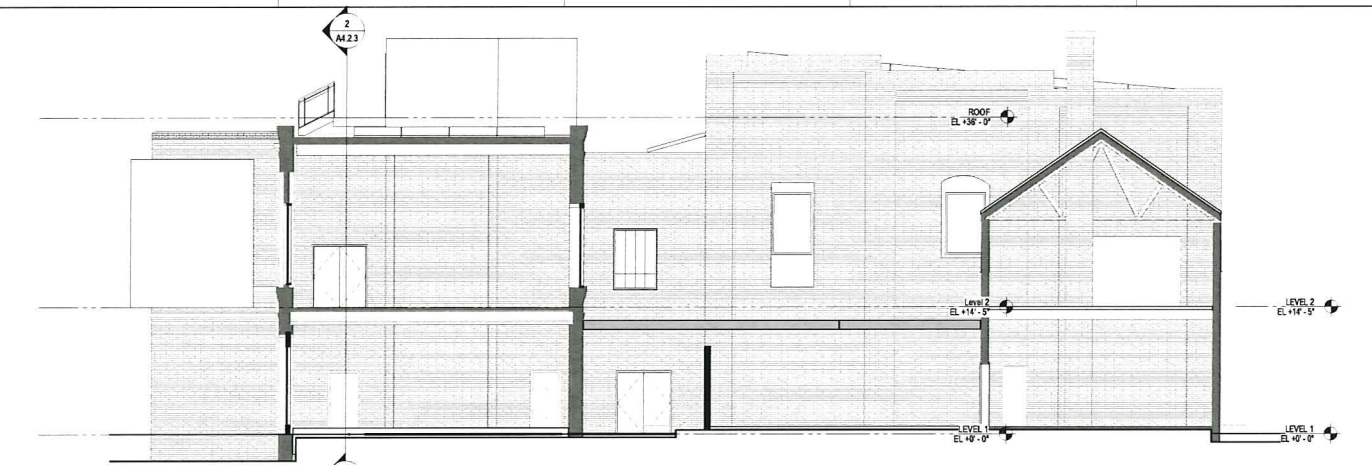
**NOT FOR
CONSTRUCTION**



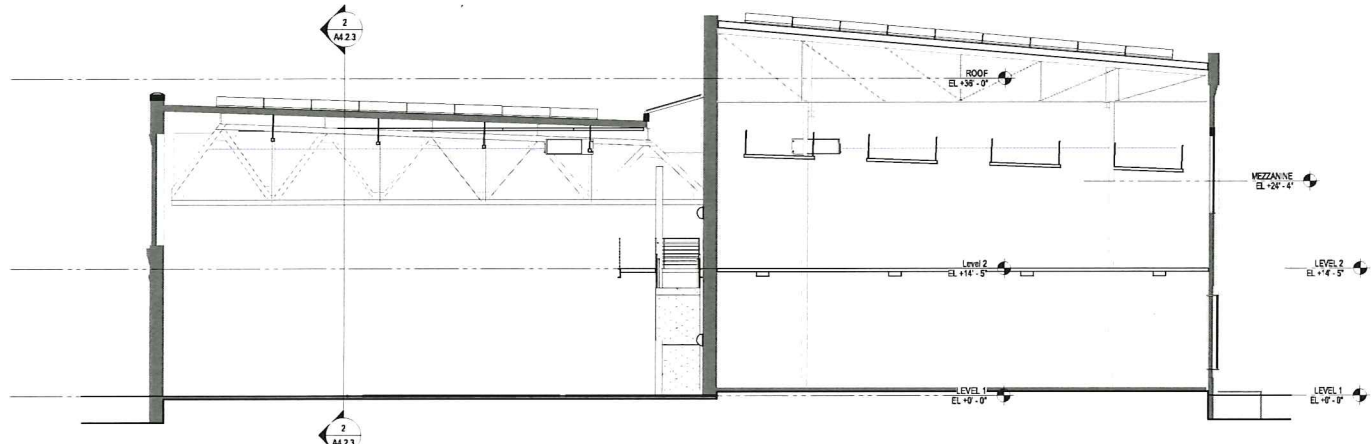
SHEET TITLE
BUILDING SECTIONS

PROJECT NUMBER
20737.000

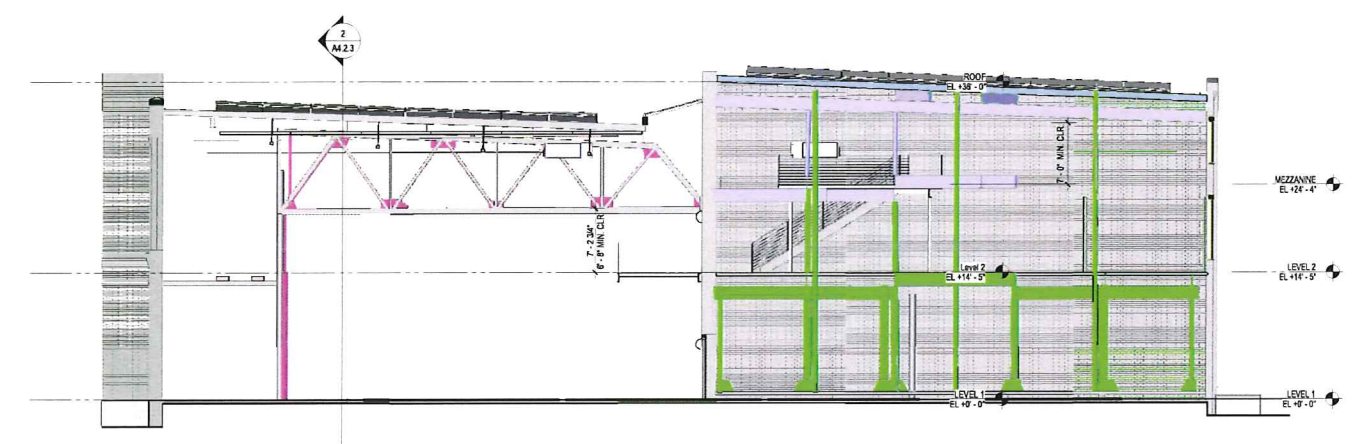
SHEET NUMBER
A4.2.1



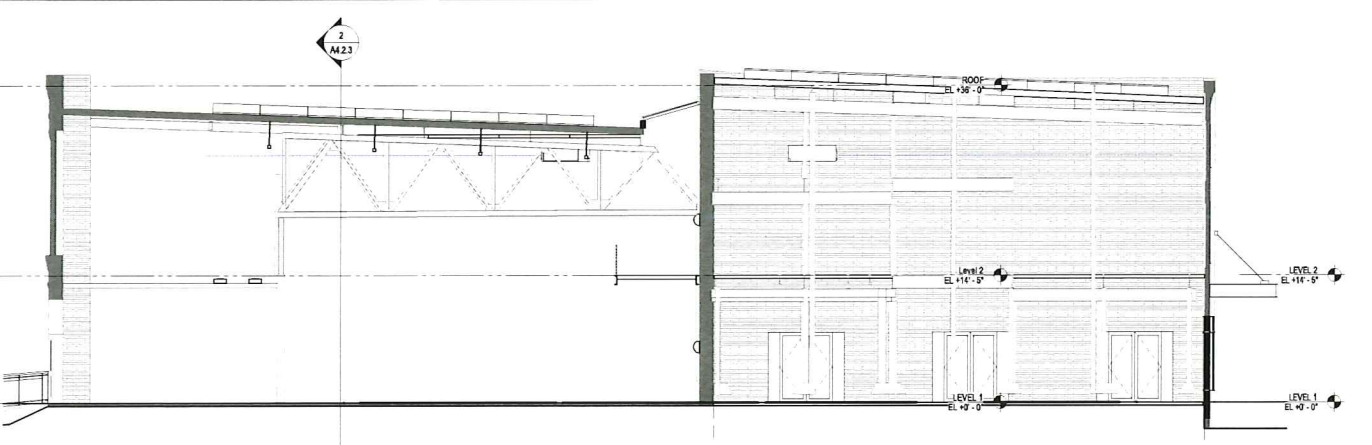
1 Section 5
SCALE: 1/8" = 1'-0"



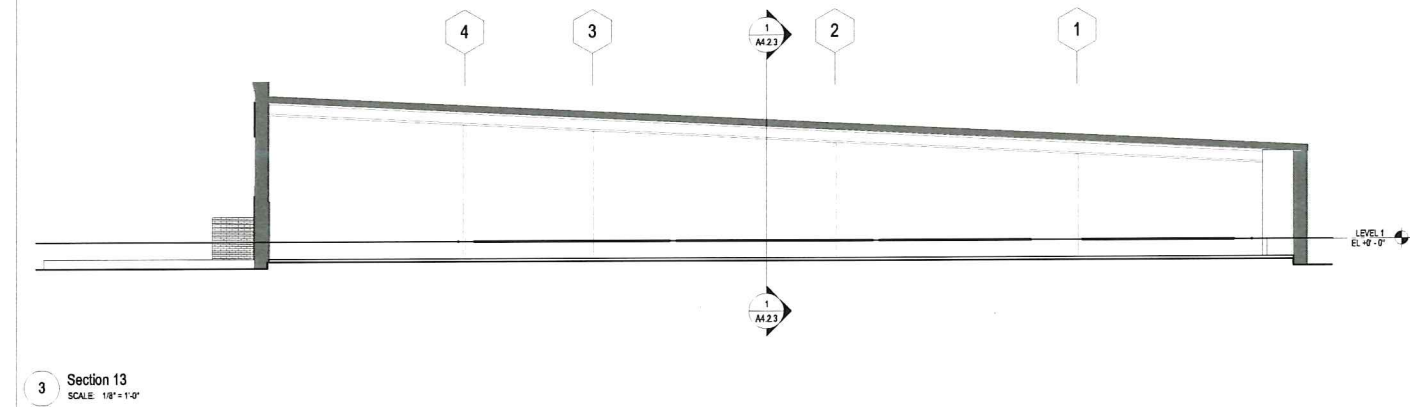
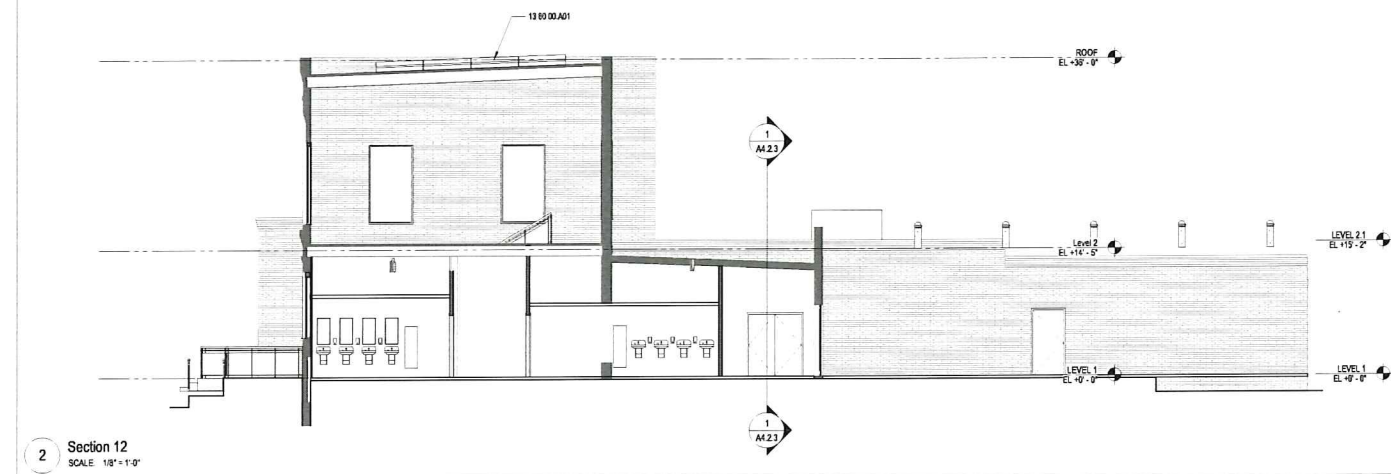
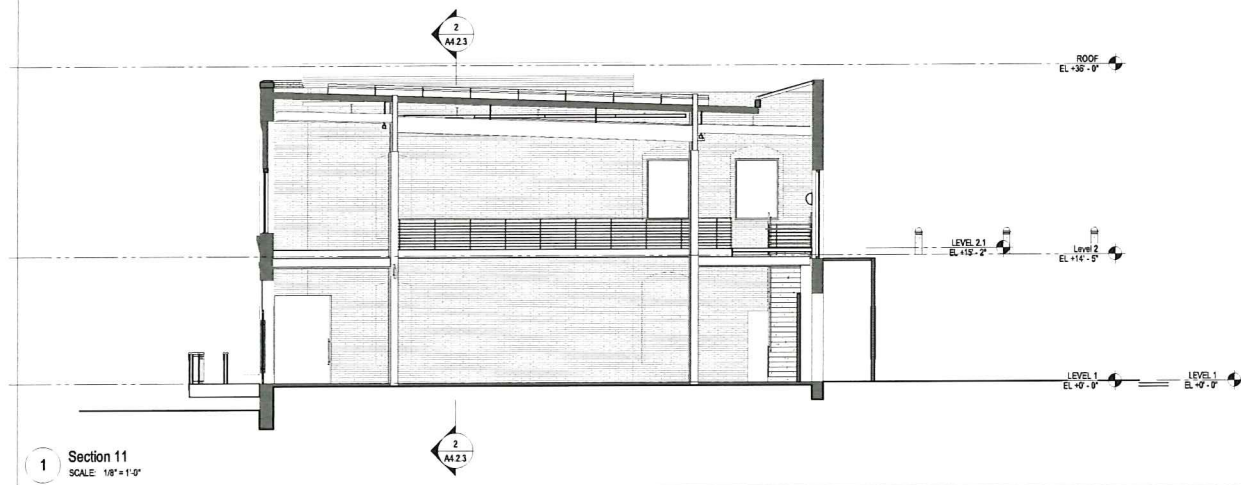
2 Section 2
SCALE: 1/8" = 1'-0"



3 Section 14
SCALE: 1/8" = 1'-0"



4 Section 6
SCALE: 1/8" = 1'-0"



GENERAL SHEET NOTES

- A. REFER TO THE A4.X SERIES SHEETS FOR ARCHITECTURAL GENERAL NOTES, DRAWING, REFERENCE AND MATERIAL SYMBOLS, ABBREVIATIONS, AS WELL AS DIMENSIONING CONVENTIONS USED ON THIS SHEET.
- B. REFER TO A00 COORDINATE WITH STRUCTURAL, MECHANICAL, PLUMBING, AND ELECTRICAL FOR ADDITIONAL INFORMATION NOT SHOWN ON THIS SHEET.
- C. REFER TO A00 COORDINATE WITH CIVIL DRAWINGS FOR ALL FINISH GRADES.



3241 GARVER GREEN
MADISON, WI 53704
Owner:
GARVER FEED MILL LLC
1000 W. Chicago Avenue Ste. 200
Chicago, IL 60612



BAUM REVISION
real estate development

SMITHGROUP JJR



REFERENCE KEYNOTES

ISSUED FOR	REV	DATE

○ SHEET KEYNOTES

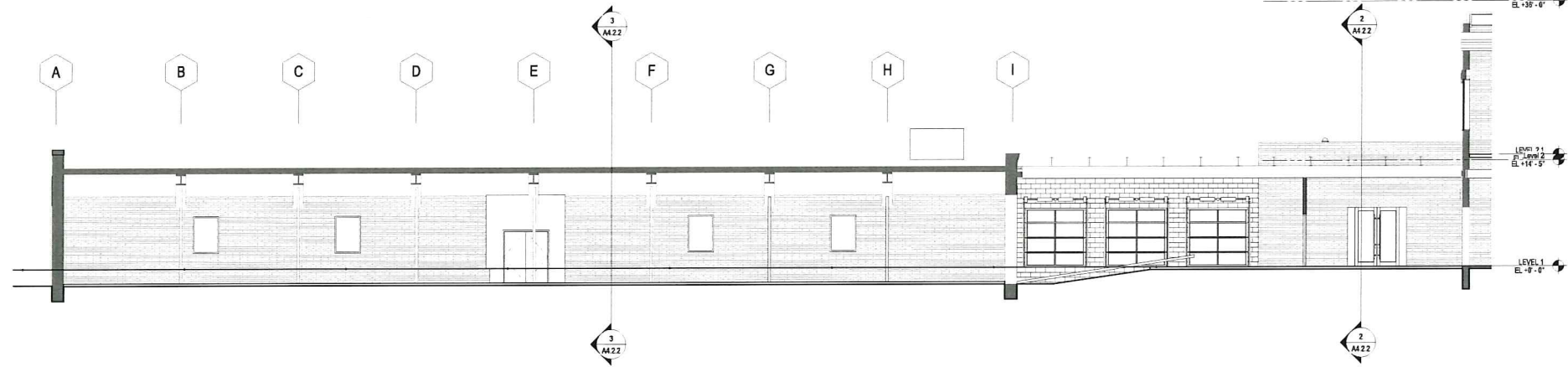
SEALS AND SIGNATURES

NOT FOR CONSTRUCTION

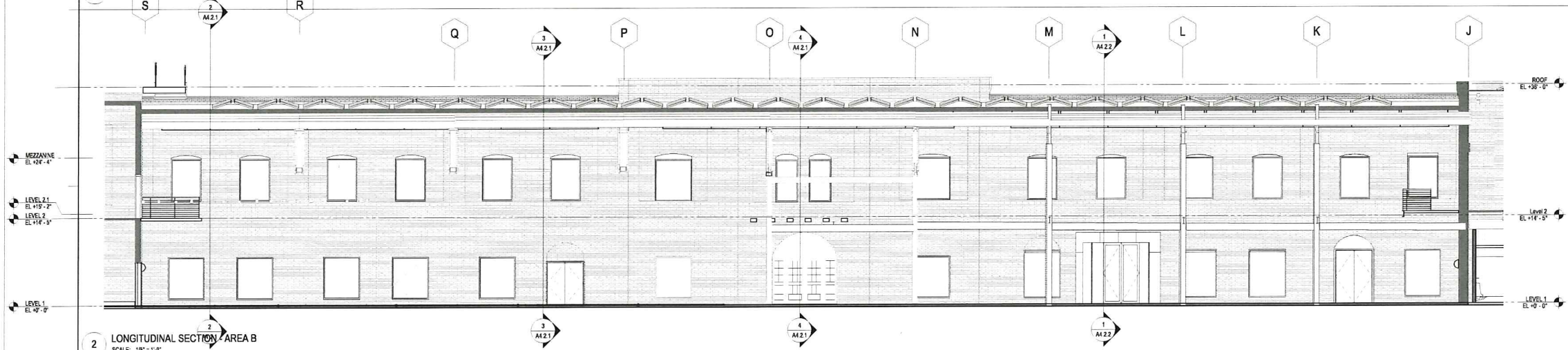


SHEET TITLE
BUILDING SECTIONS

PROJECT NUMBER 20737.000
A4.2.2
SHEET NUMBER



1 LONGITUDINAL SECTION - AREA A
SCALE: 1/8" = 1'-0"



2 LONGITUDINAL SECTION - AREA B
SCALE: 1/8" = 1'-0"

GENERAL SHEET NOTES

- A. REFER TO THE A&X SERIES SHEETS FOR ARCHITECTURAL GENERAL NOTES, DRAWING REFERENCES AND MATERIAL SYMBOLS, ABBREVIATIONS, AS WELL AS DIMENSIONING CONVENTIONS USED ON THIS SHEET.
- B. REFER TO AND COORDINATE WITH STRUCTURAL, MECHANICAL, PLUMBING, AND ELECTRICAL FOR ADDITIONAL INFORMATION NOT SHOWN ON THIS SHEET.
- C. REFER TO AND COORDINATE WITH CIVIL DRAWINGS FOR ALL FINISH GRADES.



3241 GARVER GREEN
MADISON, WI 53704
Owner:
GARVER FEED MILL LLC
1030 W. Chicago Avenue Ste. 200
Chicago, IL 60642



BAUM REVISION
real estate development



REFERENCE KEYNOTES

○ SHEET KEYNOTES

ISSUED FOR	REV	DATE

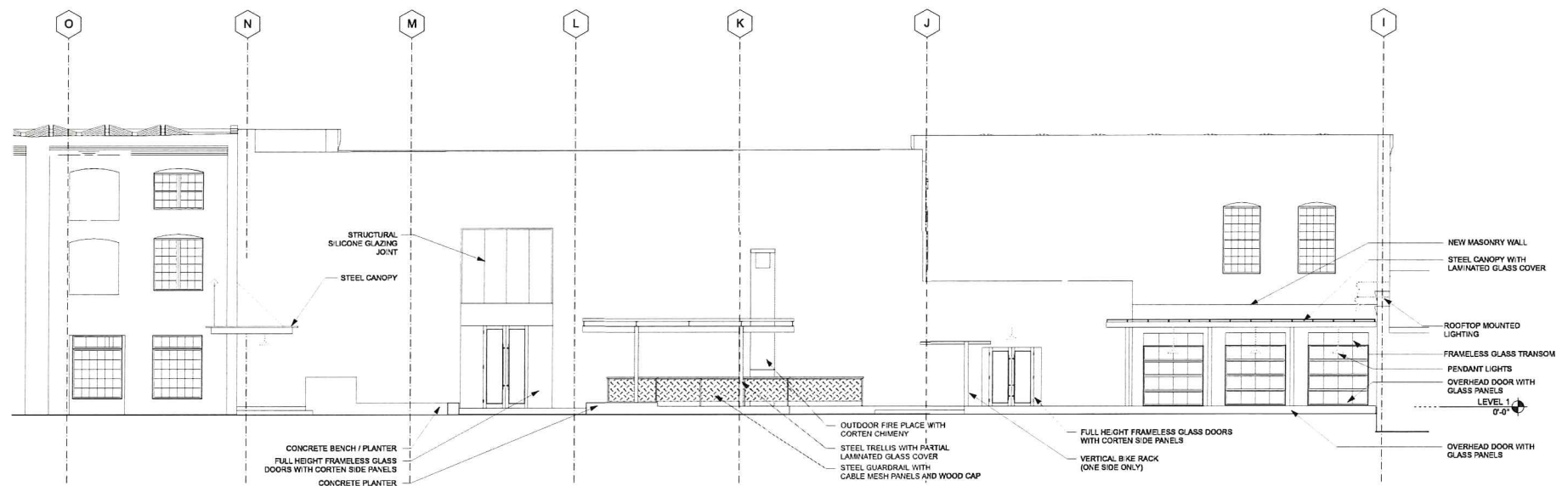
SEALS AND SIGNATURES

NOT FOR CONSTRUCTION

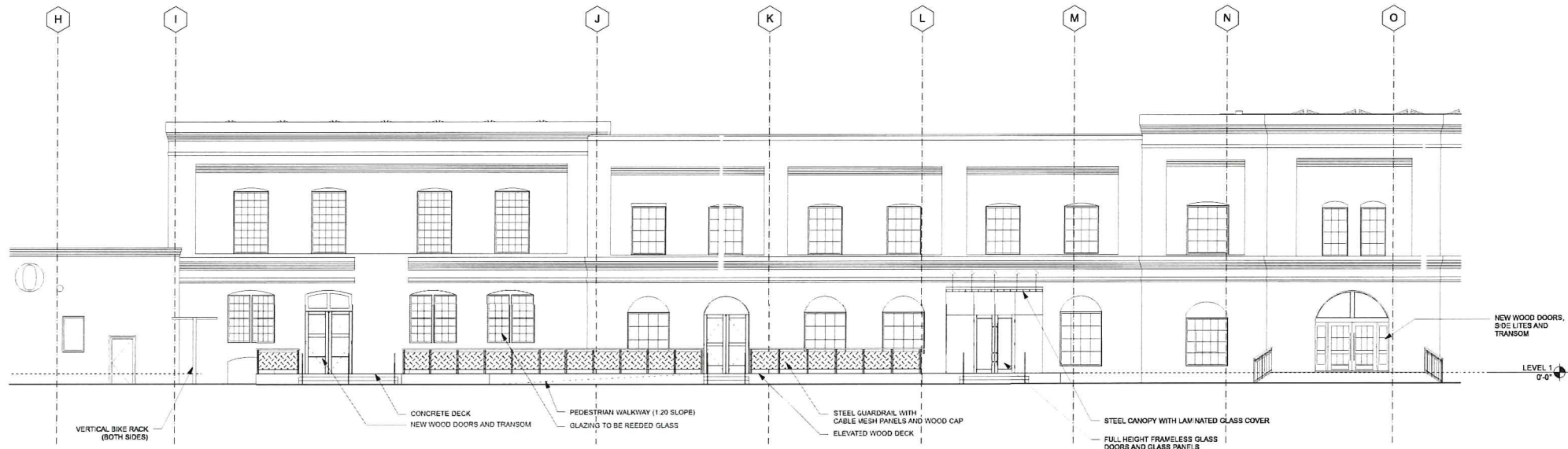


SHEET TITLE
BUILDING SECTIONS

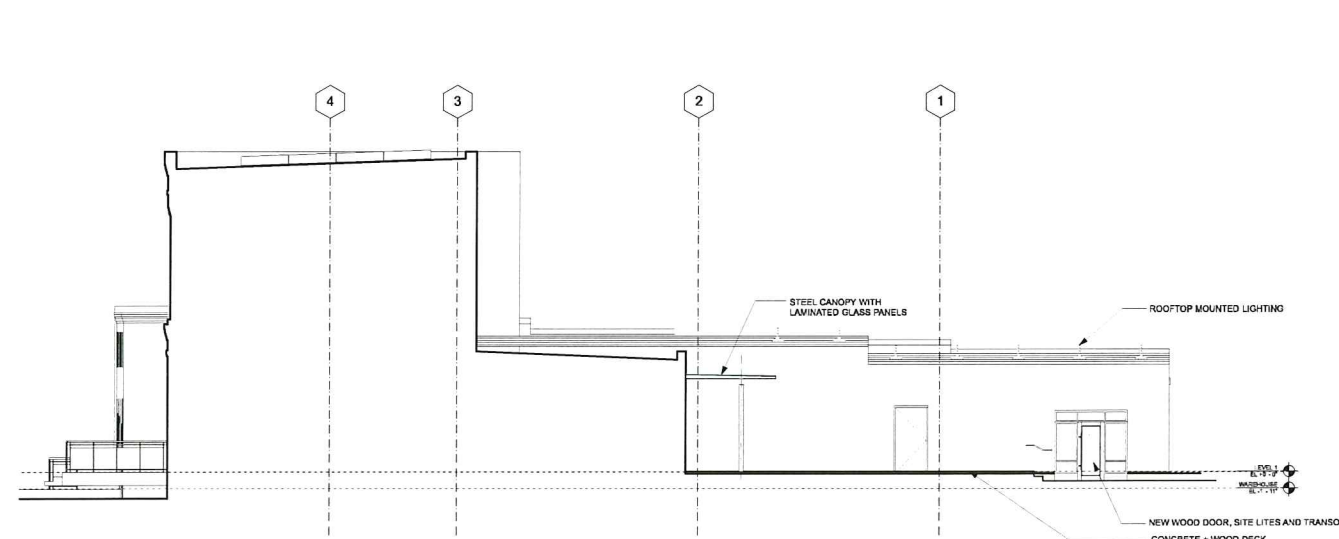
PROJECT NUMBER
20737.000
SHEET NUMBER
A4.2.3



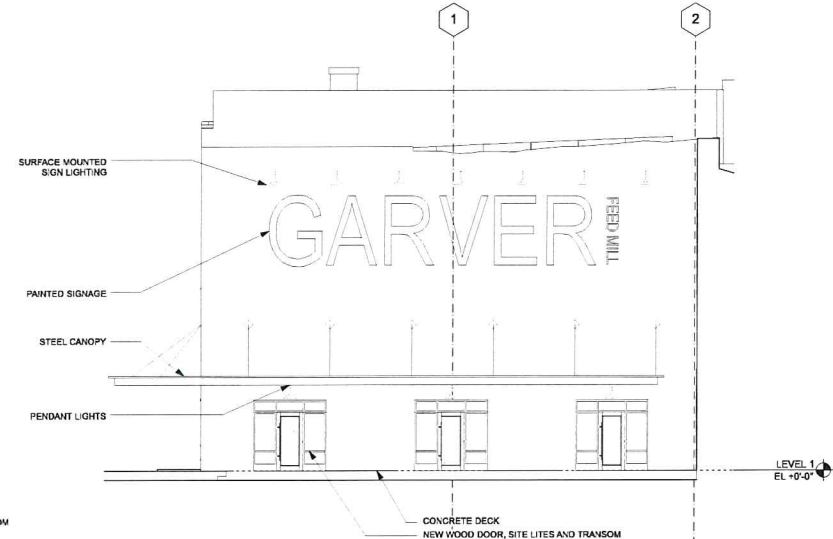
1 PARTIAL NORTH ELEVATION
SCALE: 1/8" = 1'-0"



2 PARTIAL SOUTH ELEVATION
SCALE: 1/8" = 1'-0"



4 PARTIAL WEST ELEVATION
SCALE: 1/8" = 1'-0"



3 PARTIAL EAST ELEVATION
SCALE: 1/8" = 1'-0"

GARVER FEED MILL
Madison, Wisconsin

3241 GARVER GREEN
MADISON, WI 53704

Owner:
GARVER FEED MILL LLC
1030 W Chicago Avenue Ste. 200
Chicago, IL 60642



BAUM REVISION
real estate development

SMITHGROUP JJR



design coalition
Architects • Madison, WI



ISSUED FOR	REV	DATE

2016.05.09

SEALS AND SIGNATURES

NOT FOR CONSTRUCTION



SHEET TITLE
ENLARGED EXTERIOR ELEVATIONS

PROJECT NUMBER: 20737.000
SHEET NUMBER: **A4.3.1**



BAUM REVISION
real estate development

SMITHGROUP JJR



STRUCTURAL
integrity

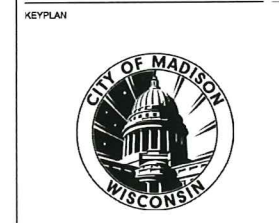
design coalition
Architects • Madison, WI

BACHMANN
CONSTRUCTION

ISSUED FOR	REV. DATE
	2016.05.09

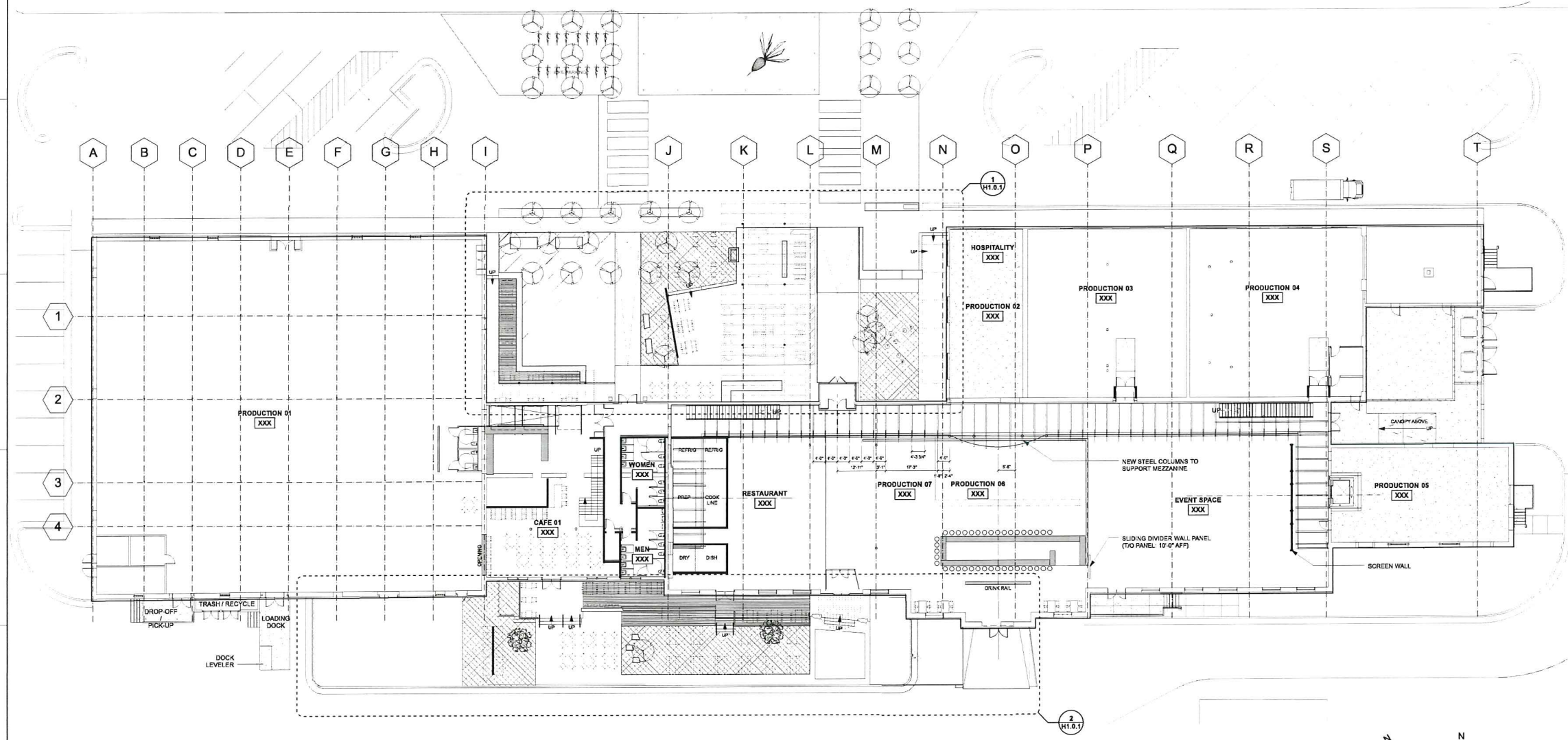
SEALS AND SIGNATURES

**NOT FOR
CONSTRUCTION**

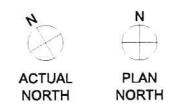


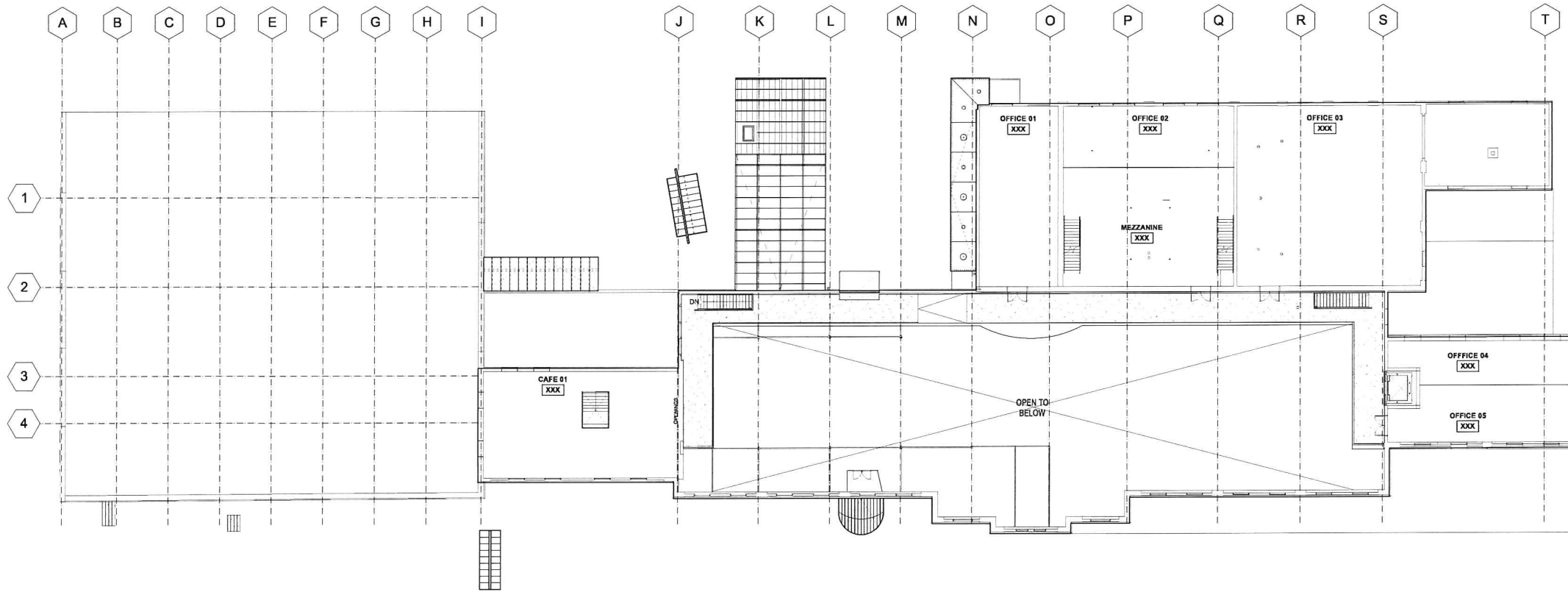
KEYPLAN
SHEET TITLE
**FIRST LEVEL
TENANT
IMPROVEMENT
FLOOR PLAN**

PROJECT NUMBER
20737.000
SHEET NUMBER
A7.1.1

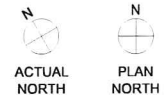


1 FIRST LEVEL TENANT IMPROVEMENT PLAN
SCALE: 1/8" = 1'-0"





1 SECOND LEVEL TENANT IMPROVEMENT PLAN
SCALE: 1/16" = 1'-0"



GENERAL SHEET NOTES

A. REFER TO ADX SERIES SHEETS FOR ARCHITECTURAL GENERAL NOTES, DRAWINGS, REFERENCE AND MATERIAL SYMBOLS, ABBREVIATIONS



3241 GARVER GREEN
MADISON, WI 53704
Owner:
GARVER FEED MILL LLC
1030 W Chicago Avenue Ste. 200
Chicago, IL 60642



BAUM REVISION
real estate development

SMITHGROUP JJR



STRUCTURAL
integrity
INC.

design coalition
Architects • Madison, WI

BACHMANN
CONSTRUCTION

REFERENCE KEY NOTES

ISSUED FOR	REV	DATE

2016.05.09

SEALS AND SIGNATURES

NOT FOR CONSTRUCTION

KEYPLAN



SHEET TITLE
SECOND LEVEL
TENANT
IMPROVEMENT
FLOOR PLAN

PROJECT NUMBER
20737.000

SHEET NUMBER
A7.1.2

SEALS AND SIGNATURES



BAUM REVISION
real estate development

SMITHGROUP JJR



STRUCTURAL
integrity
INC.

design coalition
Architects • Madison, WI

BACHMANN
CONSTRUCTION

ISSUED FOR	REV	DATE

2016.05.09

SEALS AND SIGNATURES

**NOT FOR
CONSTRUCTION**

KEYPLAN



SHEET TITLE

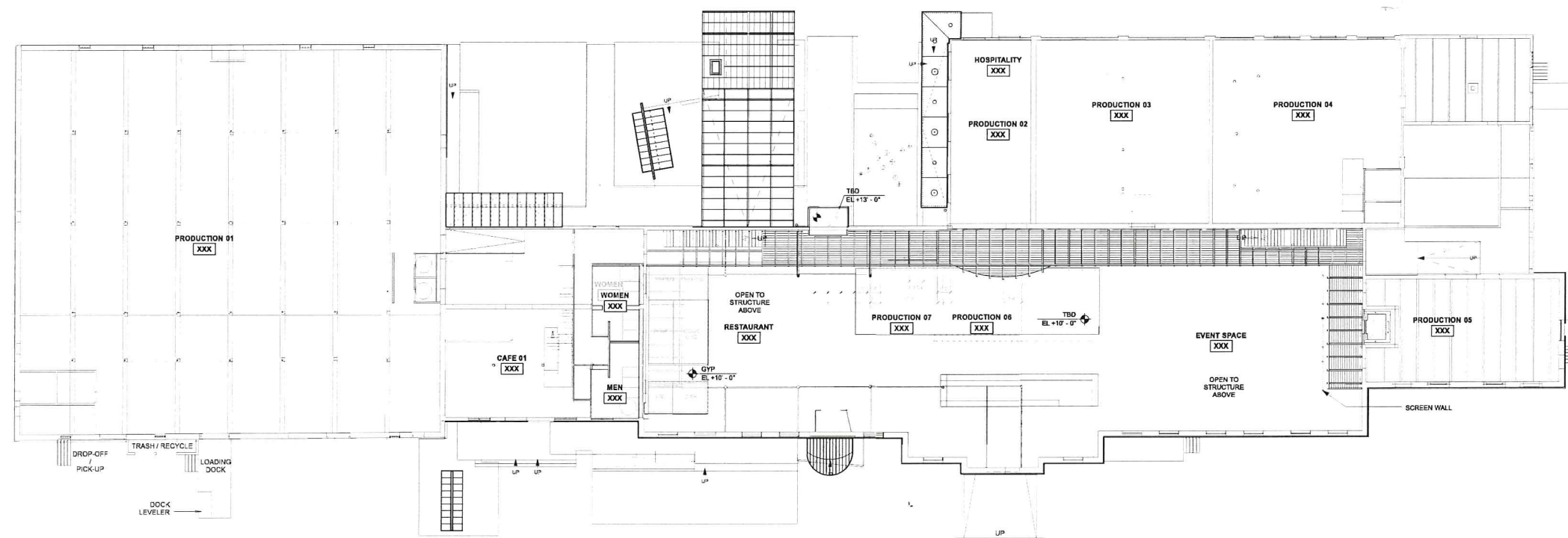
FIRST LEVEL
TENANT
IMPROVEMENT
REFLECTED
CEILING PLAN

20737.000

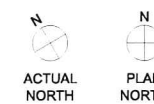
PROJECT NUMBER

A7.2.1

SHEET NUMBER



1 FIRST LEVEL TENANT IMPROVEMENT REFLECTED CEILING PLAN
SCALE: 1/16" = 1'-0"



GENERAL SHEET NOTES

A. REFER TO AD X SERIES SHEETS FOR ARCHITECTURAL GENERAL NOTES, DRAWINGS, REFERENCE AND MATERIAL SYMBOLS, ABBREVIATIONS.



3241 GARVER GREEN
MADISON, WI 53704
Owner: GARVER FEED MILL LLC
1330 W. Chicago Avenue Ste. 200
Chicago, IL 60642

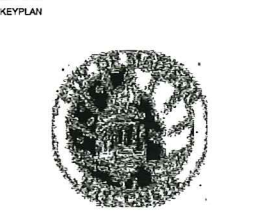


REFERENCE KEY NOTES

ISSUED FOR	REV	DATE
		2016.05.09

SEALS AND SIGNATURES

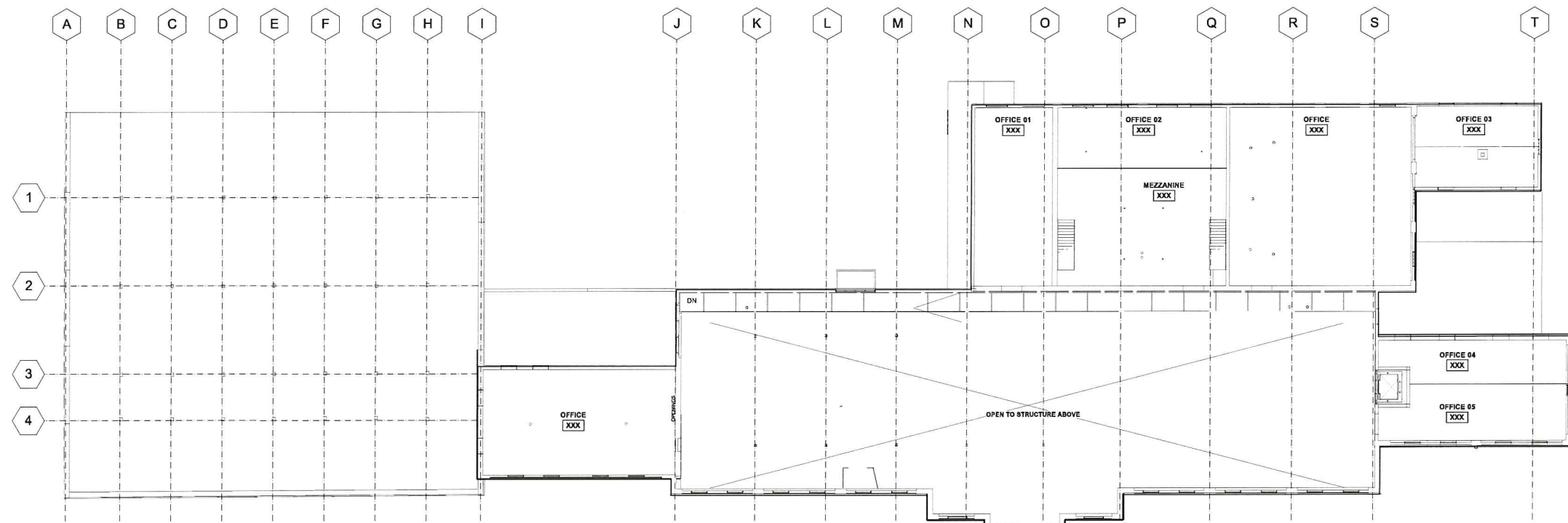
NOT FOR CONSTRUCTION



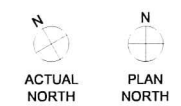
SHEET TITLE
**SECOND LEVEL
TENANT
IMPROVEMENT
REFLECTED
CEILING PLAN**

PROJECT NUMBER
20737.000

SHEET NUMBER
A7.2.2



1 SECOND LEVEL TENANT IMPROVEMENT REFLECTED CEILING PLAN
SCALE: 1/16" = 1'-0"





BAUMREVISION
real estate development

SMITHGROUP JJR



STRUCTURAL
integrity
INC.

design coalition
Architects • Madison, WI

BACHMANN
CONSTRUCTION

ISSUED FOR	REV	DATE

2016.05.09

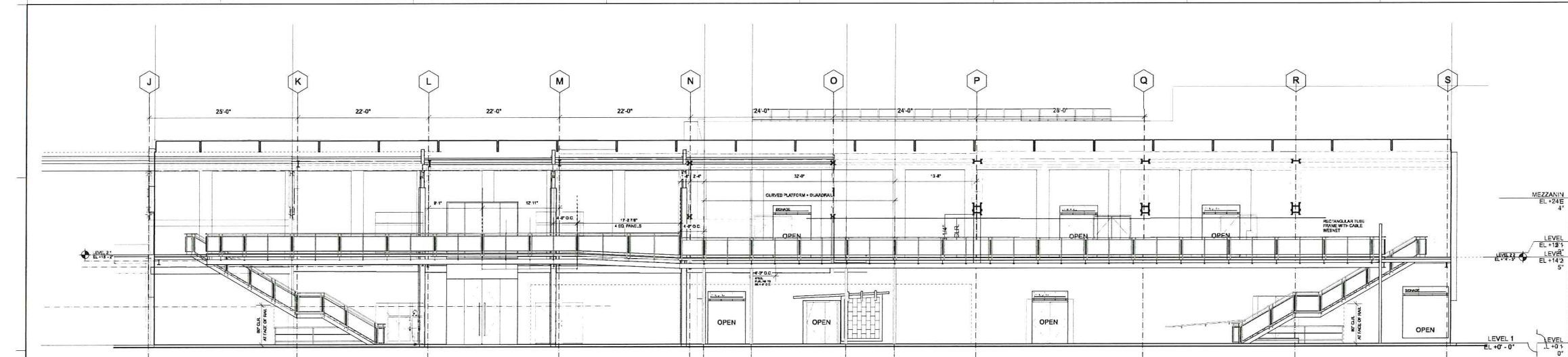
SEALS AND SIGNATURES

**NOT FOR
CONSTRUCTION**

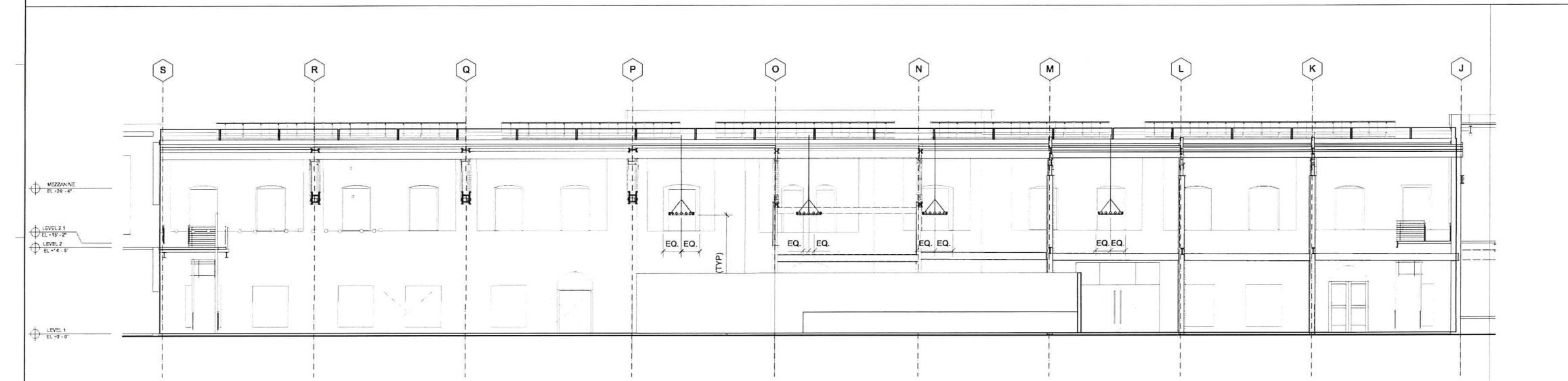


SHEET TITLE
**ENLARGED
INTERIOR
ELEVATIONS**

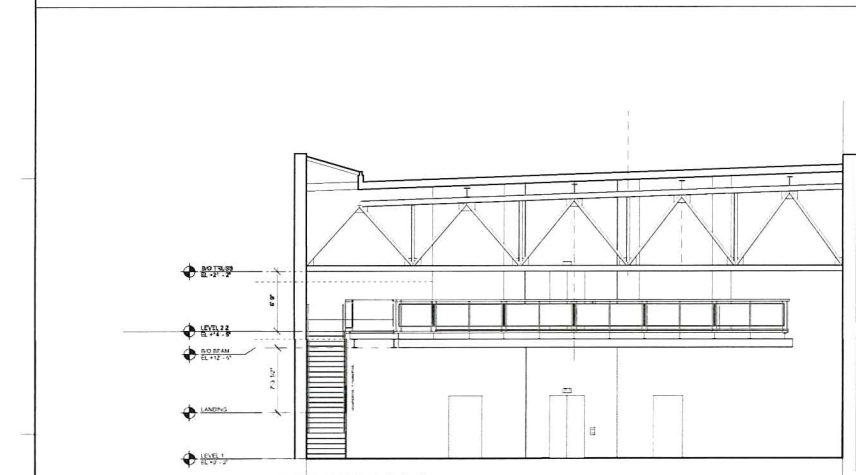
PROJECT NUMBER 20737.000
SHEET NUMBER **A7.3.1**



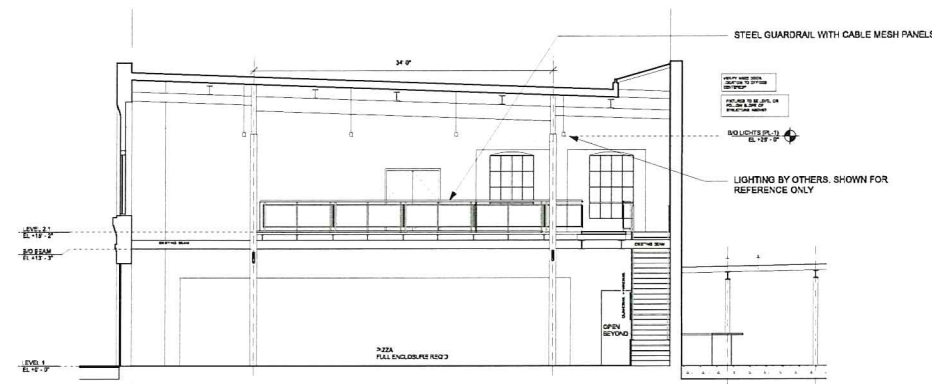
1 Elevation 1
SCALE: 1/8" = 1'-0"



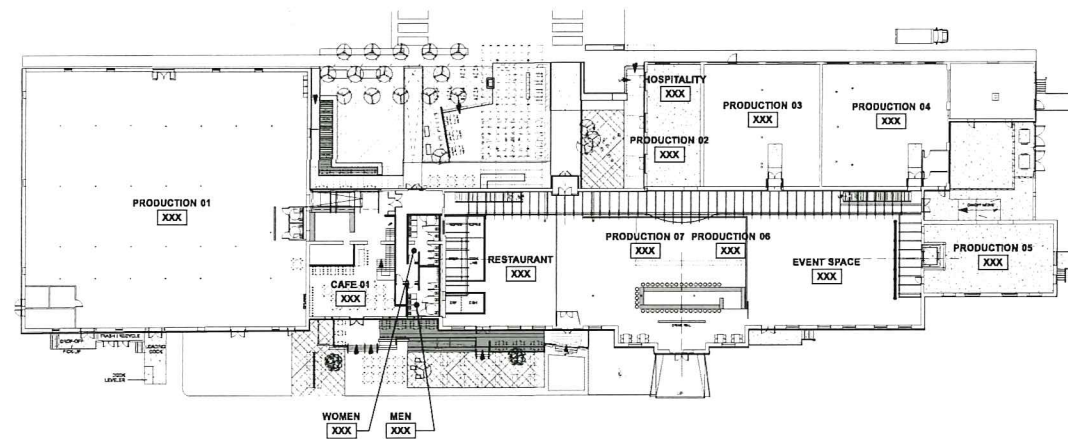
2 Elevation 2
SCALE: 1/8" = 1'-0"



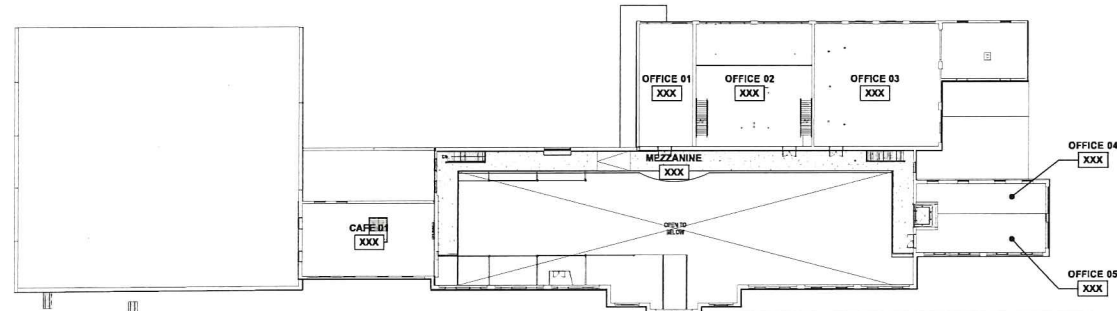
3 Elevation 3
SCALE: 1/8" = 1'-0"



4 Elevation 4
SCALE: 1/8" = 1'-0"



1 FIRST LEVEL FINISH PLAN
SCALE: 1/32" = 1'-0"



2 SECOND LEVEL FINISH PLAN
SCALE: 1/32" = 1'-0"

FINISH SCHEDULE

ROOM No.	LOCATION ROOM NAME OR DESCRIPTION	BASE	FLOOR	WALLS				CEILING		REMARKS
				NORTH	SOUTH	WEST	EAST	MAT'L	FINISH	
--	PRODUCTION 01	--	CONC-2	EXISTING	EXISTING	EXISTING	EXISTING	WD	--	--
--	ENTRY VESTIBULE	--	CONC-1	--	--	--	--	--	--	--
--	HOSPITALITY	--	WD	EXISTING	EXISTING	EXISTING	EXISTING	WD	--	--
--	PRODUCTION 02	--	WD	EXISTING	EXISTING	EXISTING	EXISTING	WD	--	--
--	PRODUCTION 03	--	CONC-1	EXISTING	EXISTING	EXISTING	EXISTING	WD	--	--
--	PRODUCTION 04	--	CONC-1	EXISTING	EXISTING	EXISTING	EXISTING	WD	--	--
--	PRODUCTION 05	--	CONC-1	EXISTING	EXISTING	EXISTING	EXISTING	CONC	--	--
--	EVENT SPACE	--	CONC-1	EXISTING	EXISTING	EXISTING	EXISTING	WD	--	--
--	PRODUCTION 06	--	CONC-1	EXISTING	EXISTING	EXISTING	EXISTING	--	--	--
--	ENTRY VESTIBULE	--	CONC-2	--	--	--	--	--	--	--
--	PRODUCTION 07	--	CONC-1	--	--	--	--	--	--	--
--	RESTAURANT	--	CONC-1	EXISTING	EXISTING	EXISTING	EXISTING	WD	--	--
--	WOMEN	--	PT	--	--	--	--	--	--	--
--	MEN	--	PT	--	--	--	--	--	--	--
--	CAFE 01	--	CONC-2	EXISTING	EXISTING	EXISTING	EXISTING	CONC	--	--
--	MEZZANINE	--	--	EXISTING	EXISTING	EXISTING	EXISTING	WD	--	--
--	OFFICE 01	--	--	EXISTING	EXISTING	EXISTING	EXISTING	CONC	--	--
--	OFFICE 02	--	--	EXISTING	EXISTING	EXISTING	EXISTING	CONC	--	--
--	OFFICE 03	--	--	EXISTING	EXISTING	EXISTING	EXISTING	WD	--	--
--	OFFICE 04	--	--	EXISTING	EXISTING	EXISTING	EXISTING	CONC	--	--
--	OFFICE 05	--	--	EXISTING	EXISTING	EXISTING	EXISTING	CONC	--	--
--	OFFICE 06	--	--	EXISTING	EXISTING	EXISTING	EXISTING	CONC	--	--
--	CAFE 01	--	CONC	EXISTING	EXISTING	EXISTING	EXISTING	CONC	--	--
--		--	--	--	--	--	--	--	--	--
--		--	--	--	--	--	--	--	--	--
--		--	--	--	--	--	--	--	--	--
--		--	--	--	--	--	--	--	--	--
--		--	--	--	--	--	--	--	--	--
--		--	--	--	--	--	--	--	--	--
--		--	--	--	--	--	--	--	--	--
--		--	--	--	--	--	--	--	--	--
--		--	--	--	--	--	--	--	--	--
--		--	--	--	--	--	--	--	--	--
--		--	--	--	--	--	--	--	--	--
--		--	--	--	--	--	--	--	--	--
--		--	--	--	--	--	--	--	--	--
--		--	--	--	--	--	--	--	--	--
--		--	--	--	--	--	--	--	--	--
--		--	--	--	--	--	--	--	--	--
--		--	--	--	--	--	--	--	--	--
--		--	--	--	--	--	--	--	--	--
--		--	--	--	--	--	--	--	--	--
--		--	--	--	--	--	--	--	--	--
--		--	--	--	--	--	--	--	--	--

GENERAL FINISH NOTES:
A. --

FINISH SCHEDULE REMARKS:
1. --

FINISH SPECIFICATIONS

CONC-1 EXISTING CONCRETE,
CONC-2 NEW CONCRETE

3241 GARVER GREEN
MADISON, WI 53704

Owner:
GARVER FEED MILL LLC
1030 W. Chicago Avenue Ste. 200
Chicago, IL 60642



BAUM REVISION
real estate development

SMITHGROUP JJR



design coalition
Architects • Madison, WI



ISSUED FOR	REV. DATE

SEALS AND SIGNATURES

NOT FOR CONSTRUCTION

KEYPLAN



SHEET TITLE
FINISH SCHEDULE

PROJECT NUMBER 20737.000

A8.0.1

SHEET NUMBER

ELECTRICAL ABBREVIATIONS

Table with columns A, M, and descriptions for various electrical components like AMPERES, BREAKER, CONDUIT, etc.

ELECTRICAL EQUIPMENT NAMING CONVENTION KEY

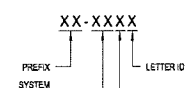


Table with columns PREFIX, DESCRIPTION, SYSTEM DESCRIPTION, LEVEL, and DESCRIPTION for equipment naming.

ELECTRICAL LIGHTING SYMBOLS

Table of lighting symbols including wall mounted fixtures, fluorescent fixtures, track lighting, and emergency lighting.

DISTRIBUTION AND DIAGRAM SYMBOLS

Table of distribution and diagram symbols including switches, transformers, current transformers, and metering units.

ELECTRICAL WIRING SYMBOLS

Table of electrical wiring symbols including homerun to panel, conduit runs, and various cable types.

ELECTRICAL POWER SYMBOLS

Table of electrical power symbols including receptacles, switches, and lighting control panels.

ELECTRICAL EQUIPMENT SYMBOLS

Table of electrical equipment symbols including motors, disconnect switches, and surge protective devices.

SPECIAL SYSTEM OUTLET SYMBOLS

Table of special system outlet symbols including TV outlets, VCR outlets, and PA volume controls.

FIRE ALARM SYMBOLS

Table of fire alarm symbols including strobes, horns, smoke detectors, and alarm control panels.

SECURITY SYSTEM SYMBOLS

Table of security system symbols including CCTV cameras, door contact switches, and motion detectors.

TELECOMMUNICATION SYMBOLS

Table of telecommunication symbols including voice outlets, data outlets, and intercom systems.

NURSE CALL SYSTEM SYMBOLS

Table of nurse call system symbols including control panels, master stations, and call stations.

GENERAL NOTES

- List of general notes providing instructions for installation, coordination, and compliance with codes.

MOUNTING HEIGHTS

- List of mounting heights for various electrical devices and equipment.

REFERENCE SYMBOLS

- List of reference symbols for section numbers, drawing numbers, and detail numbers.



3241 GARVER GREEN MADISON, WI 53704

Owner: GARVER FEED MILL LLC 1030 W. Chicago Avenue Ste. 200 Chicago, IL 60642



SMITHGROUP JJR logo with Architects • Madison, WI text.

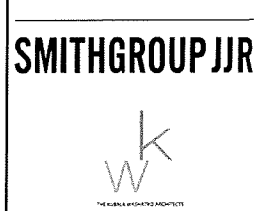


Table with columns ISSUED FOR, REV, and DATE for revision tracking.

NOT FOR CONSTRUCTION stamp.



SHEET TITLE: ELECTRICAL ABBREVIATIONS AND SYMBOLS. PROJECT NUMBER: 20737.000. SHEET NUMBER: E0.1.

GENERAL SHEET NOTES

- A. COORDINATE WITH LOCAL UTILITY FOR ALL SITE SERVICE REQUIREMENTS.
- B. CONTACT LOCAL UTILITY TO IDENTIFY ALL EXISTING UNDERGROUND UTILITIES.



3241 GARVER GREEN
MADISON, WI 53704
OWNER:
GARVER FEED MILL LLC
1050 W. Chicago Avenue Ste. 203
Chicago, IL 60642



BAUM REVISION
real estate development

SMITHGROUP JJR



ISSUED FOR	REV	DATE

SEALS AND SIGNATURES

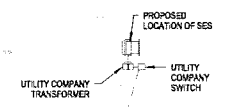
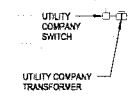
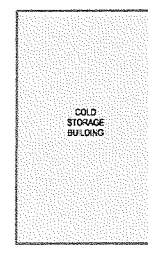
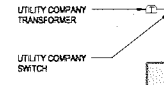
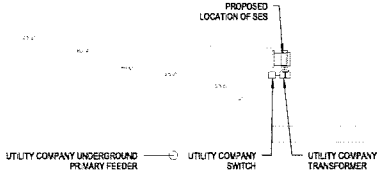
NOT FOR CONSTRUCTION



SHEET TITLE
ELECTRICAL SITE PLANS

PROJECT NUMBER
20737.000

SHEET NUMBER
E1.1



EMERGENCY DIESEL GENERATOR WITH (2) TRANSFER SWITCHES WHICH WILL PROVIDE LIFE SAFETY EMERGENCY LIGHTING POWER AND OPTIONAL STANDBY POWER FOR THE COLD STORAGE BUILDING

NORTH

1 SITE - POWER
SCALE 1"=40'

3241 GARVER GREEN
MADISON, WI 53704

Owner:
GARVERFEED MILL LLC
1535 W. Chicago Avenue Ste. 200
Chicago, IL 60642



BAUM REVISION
real estate development

SMITHGROUP JJR



STRUCTURAL
integrity

design coalition
Architects • Madison, WI

BACHMANN
CONSTRUCTION

ISSUED FOR	REV	DATE

SCALE AND SIGNATURES

**NOT FOR
CONSTRUCTION**

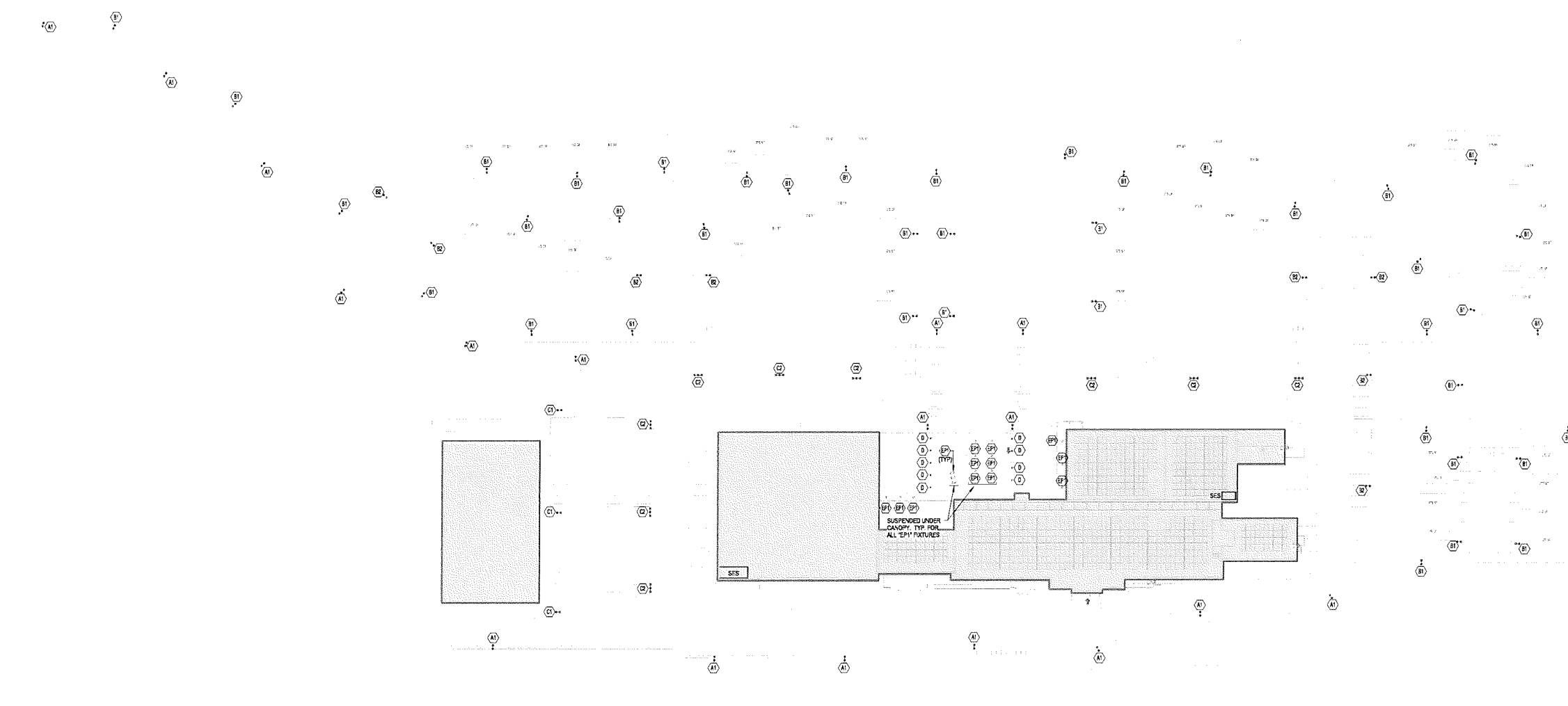


SHEET TITLE
LIGHTING SITE PLAN

PROJECT NUMBER
20737.000

SHEET NUMBER
E1.2

SHEET NUMBER



1 SITE - LIGHTING
SCALE: 1" = 49' 0"

EE - LIGHTING FIXTURE SCHEDULE

TYPE	DESCRIPTION	MANUFACTURER	MODEL	LOAD	LAMP	BALLAST	VOLTAGE	MOUNTING	COMMENTS
A1	SINGLE-HEAD, ARCHITECTURAL EXTERIOR POLE MOUNT LED LIGHT FIXTURE WITH 25' STEEL POLE.	LITHONIA - ANTIQUE STREET LAMPS	EMJ25	73 VA	LED		277 V	POLE MOUNT	
B1	SNGL. E-HEAD, PEDESTRIAN-SCALE, ARCHITECTURAL EXTERIOR POLE MOUNT LED LIGHT FIXTURE WITH 19' STEEL POLE.	LITHONIA - ANTIQUE STREET LAMPS	EMJ25	73 VA	LED		277 V	POLE MOUNT	
B2	SINGLE-HEAD, ARCHITECTURAL EXTERIOR POLE MOUNT LED LIGHT FIXTURE WITH 25' STEEL POLE.	LITHONIA - ANTIQUE STREET LAMPS	EMJ25	73 VA	LED		277 V	POLE MOUNT	
C1	SINGLE-HEAD, ARCHITECTURAL EXTERIOR POLE MOUNT LED LIGHT FIXTURE WITH 25' STEEL POLE.	LITHONIA - ANTIQUE STREET LAMPS	EMJ25	73 VA	LED		277 V	POLE MOUNT	
C2	DOUBLE-HEAD, ARCHITECTURAL EXTERIOR POLE MOUNT LED LIGHT FIXTURE WITH 25' STEEL POLE.	LITHONIA - ANTIQUE STREET LAMPS	EMJ25	73 VA	LED		277 V	POLE MOUNT	
D	EXTERIOR LED BOLLARD.	LITHONIA	KS-8	22 VA	LED		277 V		
EP1	EXTERIOR PENDANT LED FIXTURE.	SPECGRADE	HBX	165 VA	LED		277 V		
H81	LED HIGH BAY.	SPECGRADE	HBX	165 VA	LED	D/WING	277 V	SUSPENDED	FOR USE IN TENANT SPACE.
H81E	SAME AS TYPE H81, EXCEPT FIXTURE SHALL BE PROVIDED WITH LIFE SAFETY EMERGENCY POWER.	SPECGRADE	HBX	165 VA	LED		277 V	SUSPENDED	
PF3	LED PENDANT FIXTURE, 3000K.	BASELITE	SH-8	20 VA	LED	D/WING	277 V	SUSPENDED	FOR USE OVER BAR.
PL1	#1 LED LINEAR INDIRECT (UPLIGHT) FIXTURE, 3000K.	AXIS LIGHTING	BSLED	57 VA	LED	D/WING	277 V	SUSPENDED	
PL2	#1 LED LINEAR DIRECT (DOWNLIGHT) FIXTURE, 3000K.	PRUDENTIAL LIGHTING	R11LED3	44 VA	LED	D/WING	277 V	SUSPENDED	FOR USE IN OFFICE.
PL2E	SAME AS TYPE PL2, EXCEPT FIXTURE SHALL BE PROVIDED WITH LIFE SAFETY EMERGENCY POWER.								
SL1	#1 LED LINEAR DIRECT (DOWNLIGHT) FIXTURE, 3000K.	AXIS LIGHTING	BSLED	57 VA	LED	D/WING	277 V	SURFACE MOUNTED	
W1	LED WALL MOUNT "JELLY JAR", 3000K.	BASELITE	W1JCLJG	20 VA	LED	D/WING	277 V	WALL MOUNTED	
W2	EXTERIOR LED SIGN LIGHT, 3000K.	BASELITE	MF19	10 VA	LED	D/WING	277 V	WALL MOUNTED	
W3	EXTERIOR LED DOWN LIGHT, 3000K.	BASELITE	T48	21 VA	LED	D/WING	277 V	WALL MOUNTED	
X1	CEILING MOUNTED EXIT SIGNS	COOPER	SURE-LITES ES SERIES: ES8-RW-277-P	7 VA	LED				PROVIDE NUMBER OF FACES AND DIRECTIONAL ARROWS AS INDICATED ON PLANS. SINGLE-SIDED SIGNS SHALL HAVE CLEAR BACKGROUND, DOUBLE-SIDED FACES SHALL HAVE MIRRORRED BACKGROUND.



BAUM REVISION
real estate development

SMITHGROUP JJR



STRUCTURAL
integrity

design coalition
Architects • Madison, WI



ISSUED FOR	REV	DATE

SEALS AND SIGNATURES

NOT FOR
CONSTRUCTION



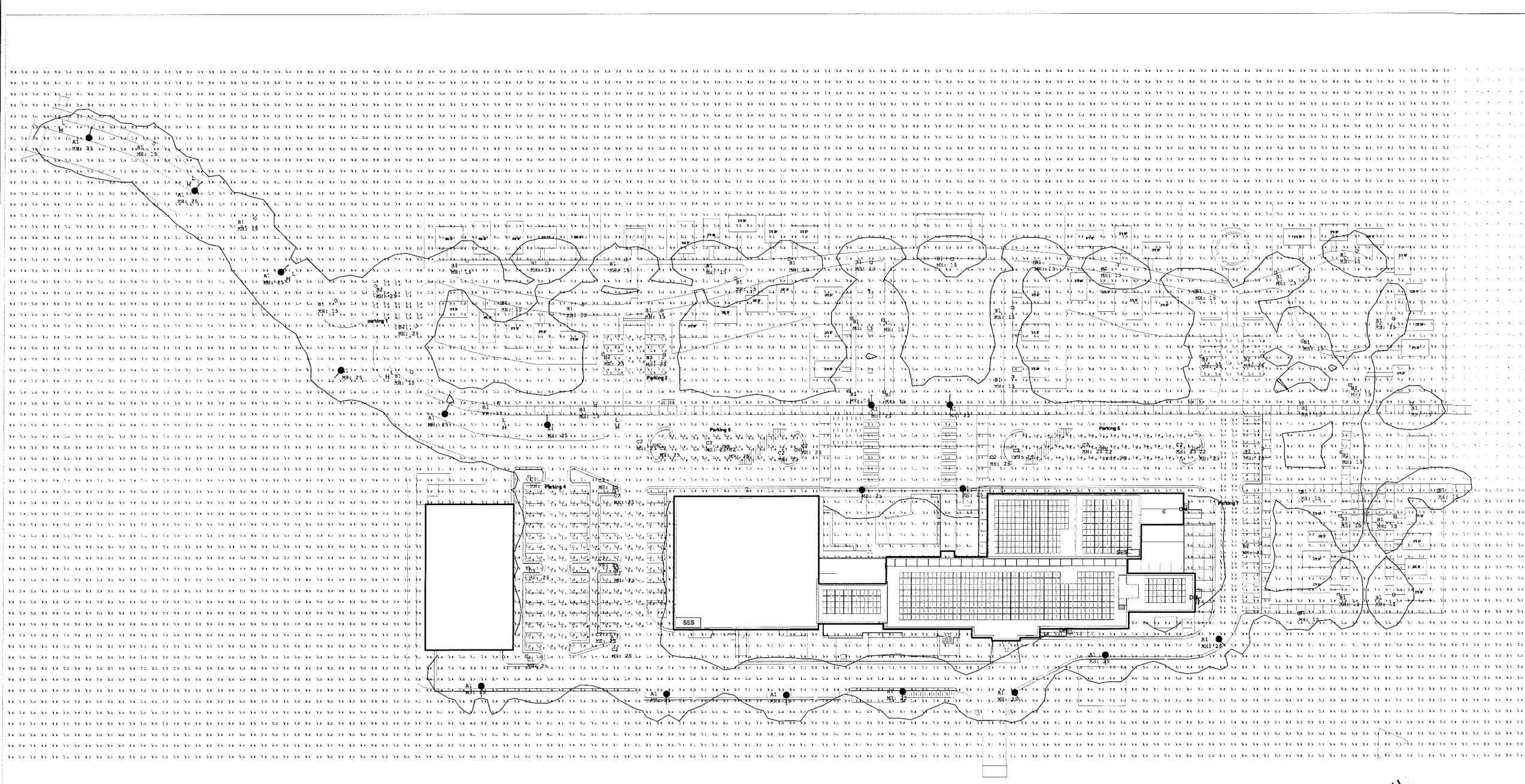
SHEET TITLE
LIGHTING PHOTOMETRIC

PROJECT NUMBER

20737.000

E1.3

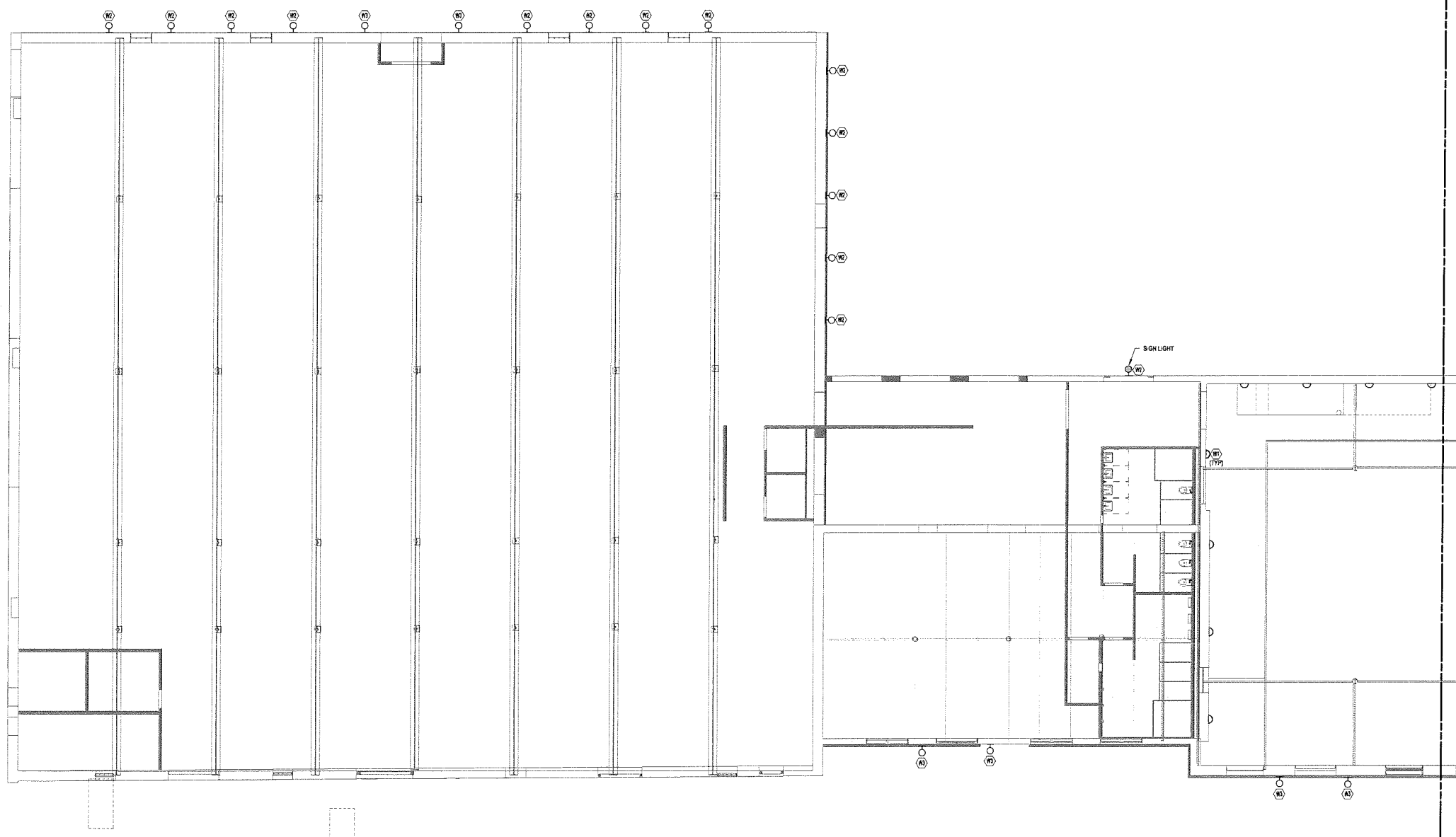
SHEET NUMBER



NORTH

Symbol	Qty	Label	Arrangement	SLF	Description
●	17	MS-LED-42C-30X-10X-882-WUOLC	SIKULS	2,920	Substance
■	8	MS-LED-42C-30X-10X-882-WUOLC	SIKULS	2,920	PARALLEL 2 25'
□	8	MS-LED-42C-30X-10X-882-WUOLC	BACK BACK	2,920	2-beam 25'
○	2	MS-LED-42C-30X-10X-882-WUOLC	SIKULS	2,920	low beam parking
◇	41	MS-LED-42C-30X-10X-882-WUOLC	SIKULS	2,920	W-alway 3 15'

Label	CalcType	Units	Avg	Max	Min	Avg/Min	Max/Min	Grid	2
Parking 1	Illuminance	fc	1.71	2.1	1.3	1.32	1.62	0	
Parking 2	Illuminance	fc	1.41	1.8	1.3	1.24	1.48	0	
Parking 3	Illuminance	fc	1.38	1.8	1.2	1.32	1.58	0	
Parking 4	Illuminance	fc	1.48	2.4	0.7	2.25	1.48	0	
Parking 5	Illuminance	fc	1.89	2.9	1.4	1.35	2.07	0	
Parking 6	Illuminance	fc	1.36	2.3	0.9	1.51	2.06	0	
Parking 7	Illuminance	fc	1.33	2.1	0.9	2.04	4.20	0	
Site	Illuminance	fc	0.31	6.5	0.9	N.A.	N.A.	4	




ROOM LEGEND

GARVER
Madison, Wisconsin
3241 GARVER GREEN
MADISON, WI 53704
Owner:
GARVERFEED MILL LLC
100211 Chicago Avenue Ste. 200
Chicago, IL 60642


BAUM REVISION
real estate development

GENERAL SHEET NOTES

- A. CONNECT CEILING MOUNTED OCCUPANCY SENSORS TO POWER PACKS WITH LOW VOLTAGE WIRING. PROVIDE NUMBER OF POWER PACKS RECOMMENDED BY MANUFACTURER. COORDINATE COMPATIBILITY WITH LIGHTING CONTRACTORS OR INDICATED SWITCHES. REFER TO MANUFACTURER WIRING DIAGRAMS.
- B. REFER TO ARCH. REFLECTED CEILING PLANS FOR EXACT LOCATION OF LIGHT FIXTURES AND OTHER CEILING MOUNTED DEVICES.

SMITHGROUP JJR


 STRUCTURAL
integrity
INC.

design coalition
Architects • Madison, WI

 **BACHMANN**
CONSTRUCTION

SHEET KEYNOTES

ISSUED FOR	REV	DATE

SEALS AND SIGNATURES

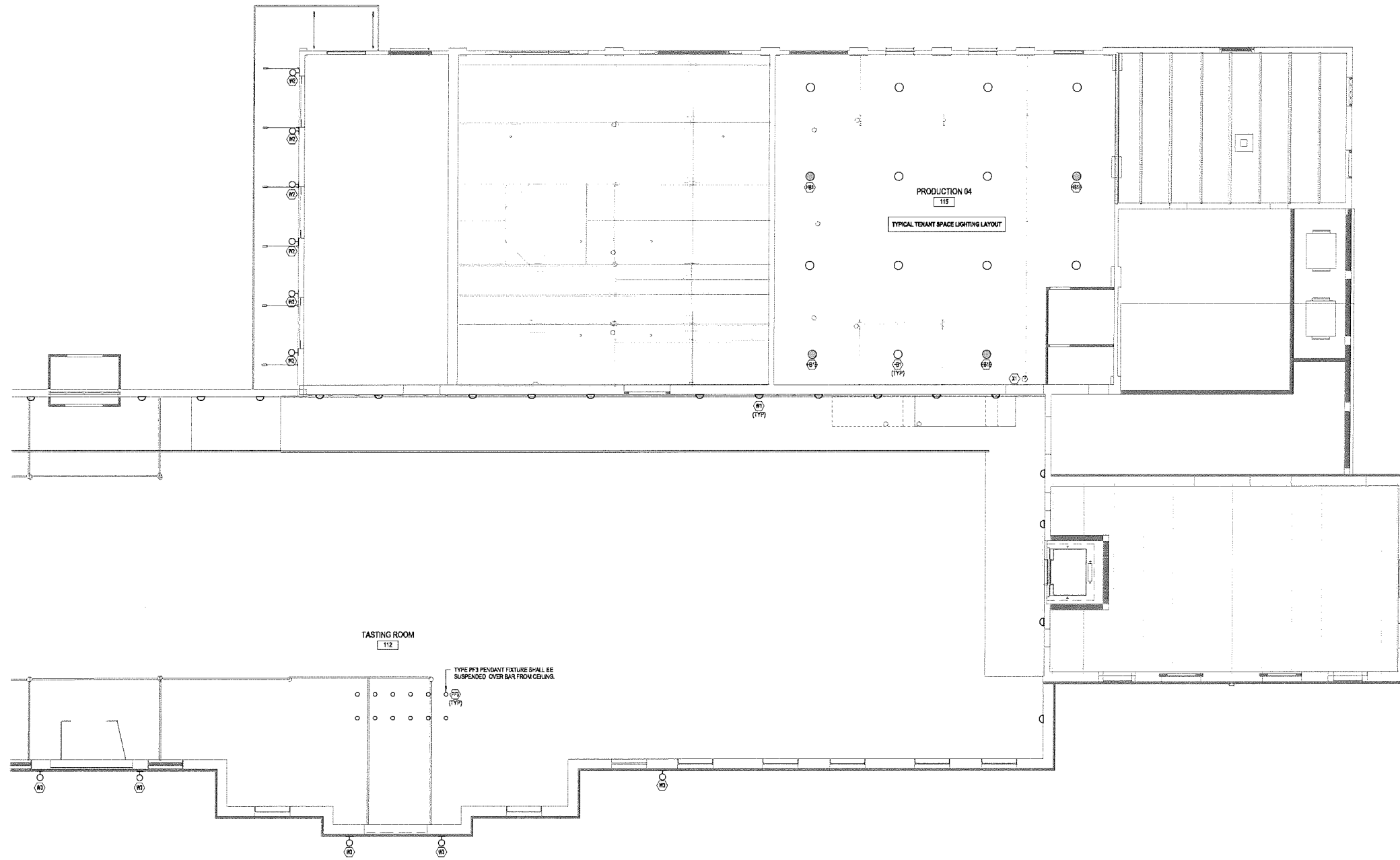
NOT FOR CONSTRUCTION



SHEET TITLE
**FIRST LEVEL LIGHTING
PLAN AREA A**

PROJECT NUMBER
20737.000

SHEET NUMBER
E3.1.A



Plot Date: 5/9/2016 4:49:51 PM Author:

ROOM LEGEND

GENERAL SHEET NOTES

- A. CONNECT CEILING MOUNTED OCCUPANCY SENSORS TO POWER PACKS WITH LOW VOLTAGE WIRING. PROVIDE NUMBER OF POWER PACKS RECOMMENDED BY MANUFACTURER. COORDINATE COMPATIBILITY WITH LIGHTING CONTRACTORS OR INDICATED SWITCHES. REFER TO MANUFACTURER WIRING DIAGRAMS
- B. REFER TO ARCH. REFLECTED CEILING PLANS FOR EXACT LOCATION OF LIGHT FIXTURES AND OTHER CEILING MOUNTED DEVICES

○ SHEET KEYNOTES

GARVER
Madison, Wisconsin
FEET IN CHAIN

3241 GARVER GREEN
MADISON, WI 53704
Owner:
GARVER FEED MILL LLC
1033 W. Chicago Avenue Ste. 200
Chicago, IL 60642



BAUM REVISION
real estate development

SMITHGROUP JJR



design coalition
Architects • Madison, WI



ISSUED FOR	REV	DATE

SEAL AND SIGNATURES

NOT FOR CONSTRUCTION



SHEET TITLE
FIRST LEVEL LIGHTING PLAN AREA B

PROJECT NUMBER
E3.1.B

2017.000

SHEET NUMBER

ROOM LEGEND

GARVER
FEED MILL
Madison, Wisconsin

3241 GARVER GREEN
MADISON, WI 53704
Owner:
GARVER FEED MILL LLC
1000 W. Chicago Avenue, Ste. 200
Chicago, IL 60642



BAUM REVISION
real estate development

GENERAL SHEET NOTES

SMITHGROUP JJR

A. CONNECT CEILING MOUNTED OCCUPANCY SENSORS TO POWER PACKS WITH LOW VOLTAGE WIRING. PROVIDE NUMBER OF POWER PACKS RECOMMENDED BY MANUFACTURER. COORDINATE COMPATIBILITY WITH LIGHTING CONTACTORS OR INDICATED SWITCHES. REFER TO MANUFACTURER WIRING DIAGRAMS.
B. REFER TO ARCH. REFLECTED CEILING PLANS FOR EXACT LOCATION OF LIGHT FIXTURES AND OTHER CEILING MOUNTED DEVICES



STRUCTURAL
integrity
INC.

design coalition
Architects • Madison, WI

BACHMANN
CONSTRUCTION

○ SHEET KEYNOTES

ISSUED FOR	REV	DATE

SEALS AND SIGNATURES

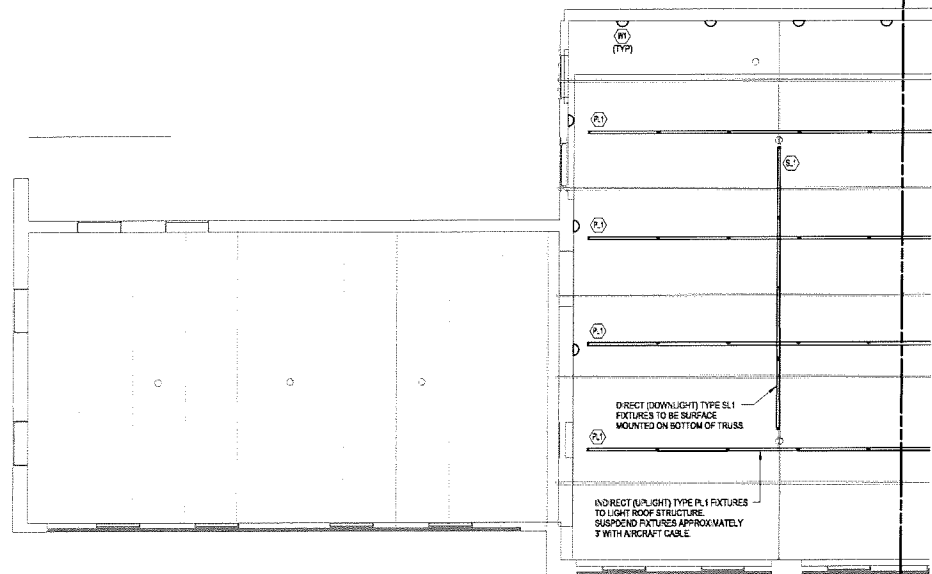
NOT FOR CONSTRUCTION

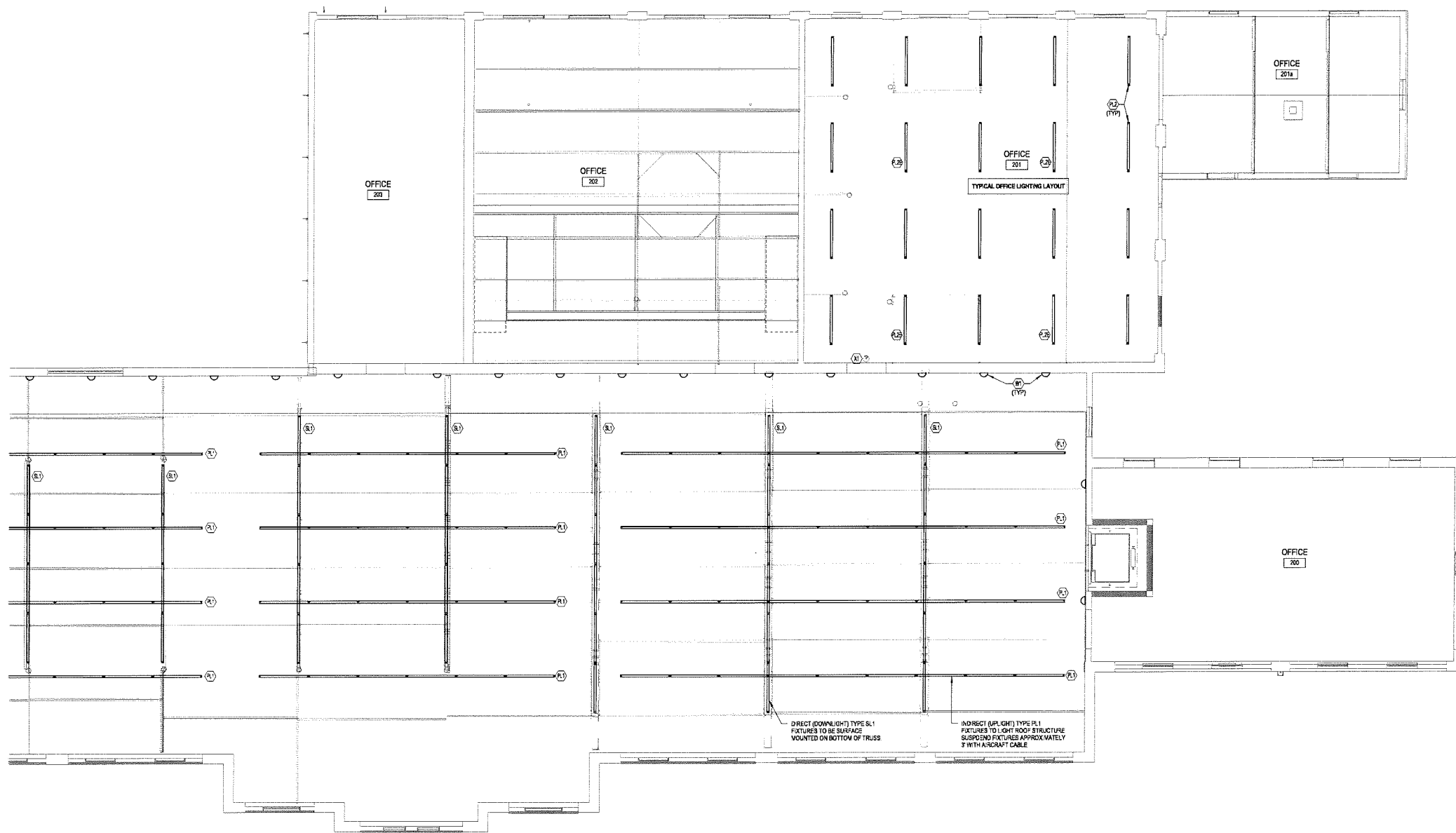


SHEET TITLE
**SECOND LEVEL LIGHTING
PLAN AREA A**

PROJECT NUMBER
20737 000

SHEET NUMBER
E3.2.A





ROOM LEGEND



3241 GARVER GREEN
MADISON, WI 53704
Owner:
GARVER FEED MILL LLC
1030 W. Chicago Avenue Ste. 203
Chicago, IL 60642



BAUM REVISION
real estate development

GENERAL SHEET NOTES

- A. CONNECT CEILING MOUNTED OCCUPANCY SENSORS TO POWER PAKS WITH LOW VOLTAGE WIRING. PROVIDE MANAGER OF POWER PAKS RECOMMENDED BY MANUFACTURER. COORDINATE COMPATIBILITY WITH LIGHTING CONTRACTORS OR INDICATED SWITCHES. REFER TO MANUFACTURER WIRING DIAGRAMS.
- B. REFER TO ARCH. REFLECTED CEILING PLANS FOR EXACT LOCATION OF LIGHT FIXTURES AND OTHER CEILING MOUNTED DEVICES.

SMITHGROUP JJR



○ SHEET KEYNOTES

ISSUED FOR	REV	DATE

SEE S AND SIGNATURES

NOT FOR CONSTRUCTION

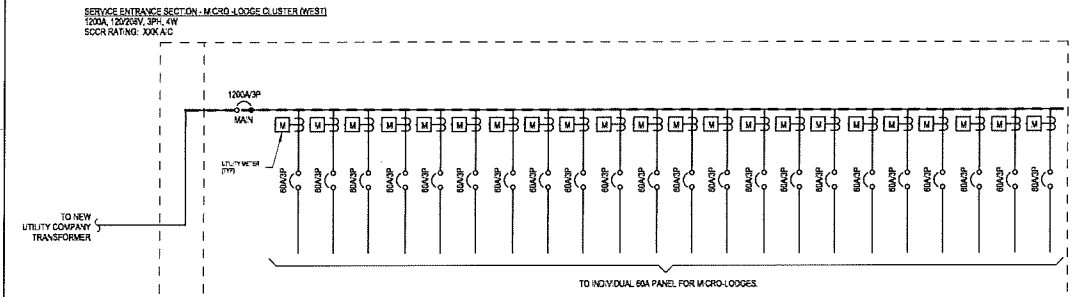


SHEET TITLE
SECOND LEVEL LIGHTING
PLAN AREA B

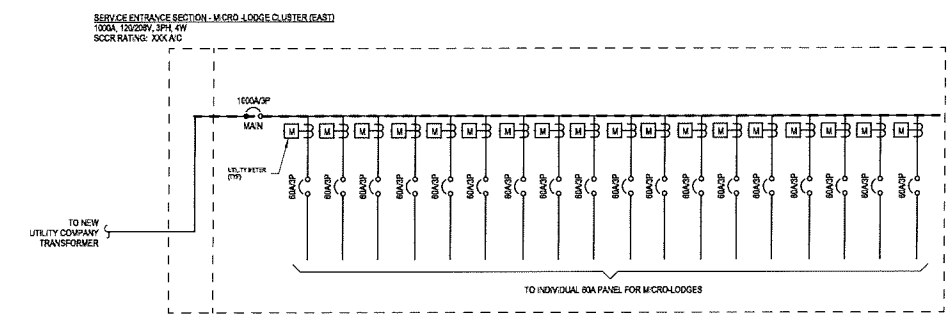
PROJECT NUMBER 20737.000

SHEET NUMBER **E3.2.B**

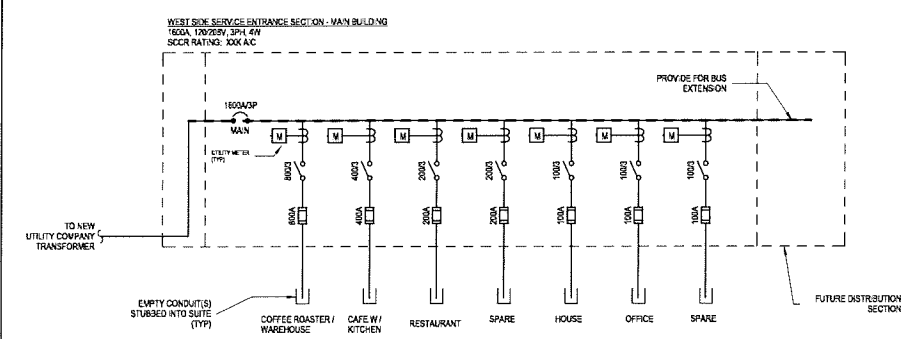
SHEET NUMBER



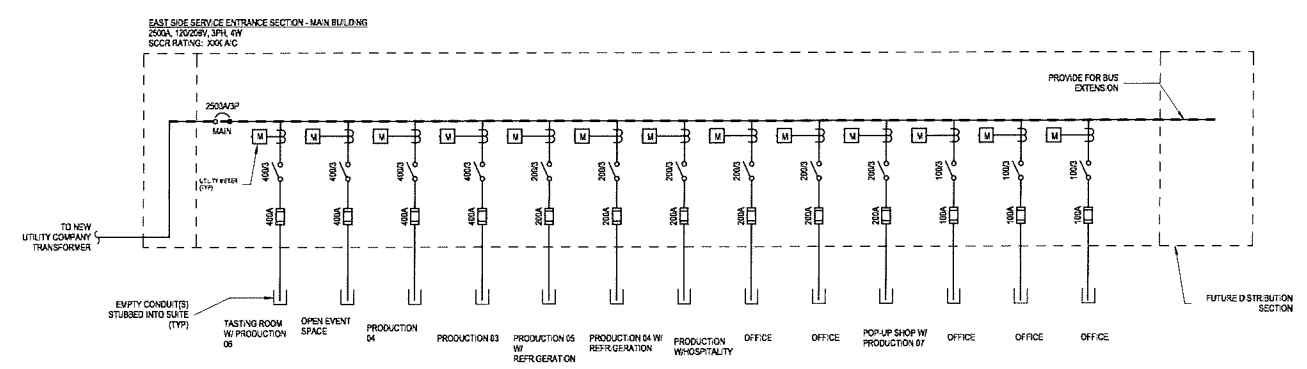
ONE LINE DIAGRAM - MICRO-LODGE CLUSTER (WEST)
 N.T.S.



ONE LINE DIAGRAM - MICRO-LODGE CLUSTER (EAST)
 N.T.S.



ONE LINE DIAGRAM - MAIN BUILDING (WEST)
 N.T.S.



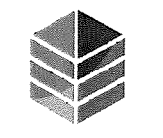
ONE LINE DIAGRAM - MAIN BUILDING (EAST)
 N.T.S.

○ SHEET KEYNOTES

○ FEEDER SCHEDULE



3241 GARVER GREEN
 MADISON, WI 53704
 Owner:
 GARVER FEED MILL, LLC
 1000 W. Chicago Avenue Ste. 200
 Chicago, IL 60642



BAUM REVISION
 real estate development

SMITHGROUP JJR



design coalition
 Architects • Madison, WI



ISSUED FOR	REV	DATE

SEALS AND SIGNATURES

NOT FOR CONSTRUCTION



SHEET TITLE
 ELECTRICAL ONE LINE DIAGRAM

PROJECT NUMBER
 SHEET NUMBER
E5.0

EE - LIGHTING FIXTURE SCHEDULE									
TYPE	DESCRIPTION	MANUFACTURER	MODEL	LOAD	LAMP	BALLAST	VOLTAGE	MOUNTING	COMMENTS
A1	SINGLE-HEAD, ARCHITECTURAL EXTERIOR POLE MOUNT LED LIGHT FIXTURE WITH 20' STEEL POLE	LITHONIA - ANTIQUE STREET LAMPS	EML25	73 VA	LED		277 V	POLE MOUNT	
B1	SINGLE-HEAD, PEDESTRIAN-SCALE, ARCHITECTURAL EXTERIOR POLE MOUNT LED LIGHT FIXTURE WITH 18' STEEL POLE	LITHONIA - ANTIQUE STREET LAMPS	EML25	73 VA	LED		277 V	POLE MOUNT	
B2	SINGLE-HEAD, ARCHITECTURAL EXTERIOR POLE MOUNT LED LIGHT FIXTURE WITH 25' STEEL POLE	LITHONIA - ANTIQUE STREET LAMPS	EML25	73 VA	LED		277 V	POLE MOUNT	
C1	SINGLE-HEAD, ARCHITECTURAL EXTERIOR POLE MOUNT LED LIGHT FIXTURE WITH 25' STEEL POLE	LITHONIA - ANTIQUE STREET LAMPS	EML25	73 VA	LED		277 V	POLE MOUNT	
C2	DOUBLE-HEAD, ARCHITECTURAL EXTERIOR POLE MOUNT LED LIGHT FIXTURE WITH 25' STEEL POLE	LITHONIA - ANTIQUE STREET LAMPS	EML25	73 VA	LED		277 V	POLE MOUNT	
D	EXTERIOR LED BOLLARD	LITHONIA	KB-28	22 VA	LED		277 V		
EP1	EXTERIOR PENDANT LED FIXTURE	SPECGRADE	HBX	165 VA	LED		277 V		
HB1	LED HIGH BAY	SPECGRADE	HBX	165 VA	LED	DIMMING	277 V	SUSPENDED	FOR USE IN TENANT SPACE
HB1E	SAME AS TYPE HB1, EXCEPT FIXTURE SHALL BE PROVIDED WITH LIFE SAFETY EMERGENCY POWER.	SPECGRADE	HBX	165 VA	LED		277 V		
PF3	LED PENDANT FIXTURE, 3000K	BASLITE	B-498	20 VA	LED	DIMMING	277 V	SUSPENDED	FOR USE OVER BAR
PL1	8' LED LINEAR INDIRECT (DOWNLIGHT) FIXTURE, 3000K	AXIS LIGHTING	BSLED	57 VA	LED	DIMMING	277 V	SUSPENDED	
PL2	8' LED LINEAR DIRECT (DOWNLIGHT) FIXTURE, 3000K	PRUDENTIAL LIGHTING	R1LED3	44 VA	LED		277 V	SUSPENDED	FOR USE IN OFFICE
PL2E	SAME AS TYPE PL2, EXCEPT FIXTURE SHALL BE PROVIDED WITH LIFE SAFETY EMERGENCY POWER.	PRUDENTIAL LIGHTING	R1LED3	44 VA	LED		277 V		
SL1	8' LED LINEAR DIRECT (DOWNLIGHT) FIXTURE, 3000K	AXIS LIGHTING	BSLED	57 VA	LED	DIMMING	277 V	SURFACE MOUNTED	
W1	LED WALL MOUNT "JELLY JAR", 3000K	BASLITE	WYCLJG	20 VA	LED	DIMMING	277 V	WALL MOUNTED	
W2	EXTERIOR LED SIGN LIGHT, 3000K	BASLITE	M719	10 VA	LED	DIMMING	277 V	WALL MOUNTED	
W3	EXTERIOR LED DOWN LIGHT, 3000K	BASLITE	TAB	21 VA	LED	DIMMING	277 V	WALL MOUNTED	
X1	CEILING MOUNTED EXITS SIGNS	COOPER	SURE-LITES ES SERIES	7 VA	LED				PROVIDE NUMBER OF FACES AND DIRECTIONAL ARROWS AS INDICATED ON PLANS. SINGLE-SIDED SIGNS SHALL HAVE CLEAR BACKGROUND, DOUBLE-SIDED FACES SHALL HAVE MARKED BACKGROUND.

3241 GARVER GREEN
MADISON, WI 53704
Owner:
GARVER FEEB MILL LLC
1000 W. Chicago Avenue, Ste 200
Chicago, IL 60642



BAUM REVISION
real estate development

SMITHGROUP JJR



design coalition
Architects • Madison, WI



SHEET KEYNOTES

ISSUED FOR	REV	DATE

SEALS AND SIGNATURES

NOT FOR CONSTRUCTION



SHEET TITLE
LIGHTING FIXTURE SCHEDULE


PROJECT NUMBER
20737.000

SHEET NUMBER
E7.1

ANTIQUE STREET LAMPS

EML25 LED MUNICIPAL PENDANT

Model: EML25
Product: LED
Type: Municipal Pendant



This European style pendant or wall mount luminaire consists of a three bearing and cast with an internal light engine and a choice of two lens options.

- Choice of a flat or an egg lens
- Stainless steel hardware
- Driver and light engine assembly mount on a removable assembly plate and are furnished with quick-disconnect plug for ease of installation and maintenance
- CSA listed and suitable for wet locations
- TGC powder coat finish
- Mounts via 1/2" NPT threaded rod (rod is sold separately to the Urban 4" or 5" luminaire series (Specify FF384 system when ordering 4" luminaire arm specifications chart for details on mounting options).

Ordering Guide

Fixture	Base	Source & Wattage	Color Temp	Lens Option	Voltage	Distribution	Options	Finish
EML25	ST BT IT	4-LED 350MA 4-LED 350MA 4-LED 350MA	3K 4K 5K	GCF GCG	3MVOLT 120 208 240 277 347 480	R2 R3 R4 R5	SF DF DFA DWE CS CSL ANTRK ANTR ANTRG ANTRG	

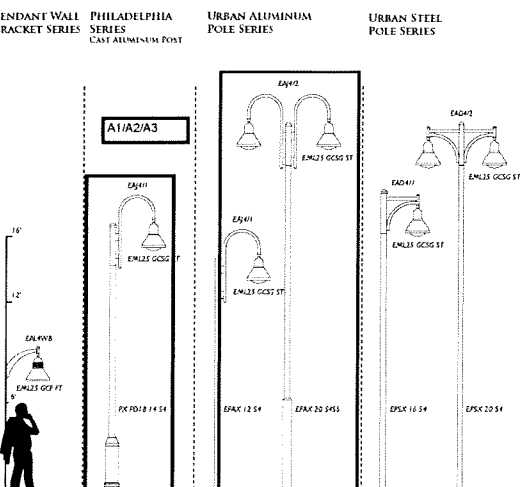
Simple Catalog Number: EML25 ST 4-LED 350MA 3K GCF 3MVOLT R2 SF DBL

www.garvergreen.com 1-800-243-AXIS (243-2925) 531 W. Chicago Avenue, Suite 200, Chicago, IL 60642

ANTIQUE STREET LAMPS

EML25

RECOMMENDED POLES & ARMS



PENDANT WALL BRACKET SERIES
PHILADELPHIA SERIES
URBAN ALUMINUM POLE SERIES
URBAN STEEL POLE SERIES

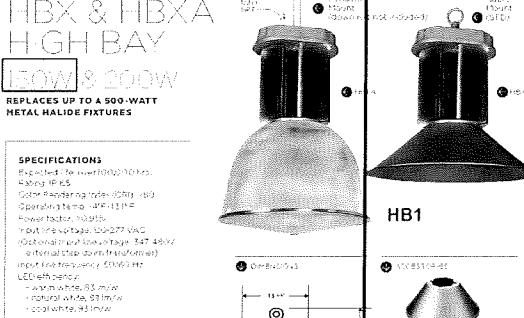
For detailed product specifications for Pole & Arm/With Mount See the Antique Street Lamp Catalog.

www.garvergreen.com 1-800-243-AXIS (243-2925) 531 W. Chicago Avenue, Suite 200, Chicago, IL 60642

HIGH BAY

HBX & HBXA

REPLACES UP TO A 500-WATT METAL HALIDE FIXTURES



SPECIFICATIONS

- Equivalent to 400-500W Metal Halide
- 4-3000K or 5000K
- 500W Maximum Input (500W/3000K)
- Operating Temp: -40°F to 113°F
- Power Factor: 0.95
- Input: 120V/277V/480V
- Output: 150W/300W/400W
- Input Frequency: 50/60 Hz
- LED with Surface Mount
- IP65
- Material: Aluminum, Steel
- Color: White, Silver
- Coat: Powder Coat

MISC SPECS

- LED Type: SMD3535
- Driver: LED
- Dimming: 0-100% (DALI)
- Dimming: 0-10V (Triac)
- Dimming: 0-10V (0-10V)
- Mounting: 150mm

MATERIALS

- Housing: Aluminum, Steel
- Reflector: Aluminum
- Lens: Acrylic
- LED: SMD3535
- Driver: LED
- Mounting: 150mm
- Material: Aluminum, Steel

OPTICAL SPECIFICATIONS

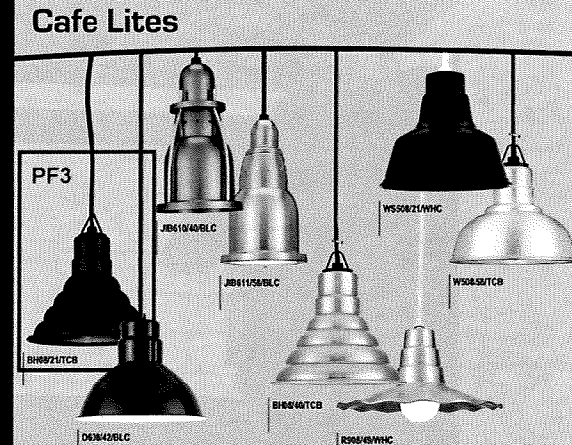
- Beam Angle: 120°
- Beam Angle: 150°
- Beam Angle: 180°

PERFORMANCE

- Beam Angle: 120°
- Beam Angle: 150°
- Beam Angle: 180°

www.garvergreen.com 1-800-243-AXIS (243-2925) 531 W. Chicago Avenue, Suite 200, Chicago, IL 60642

Cafe Lites



PF3
J0610/040/CL
J0611/040/CL
J0612/040/CL
J0613/040/CL
J0614/040/CL
J0615/040/CL
J0616/040/CL
J0617/040/CL
J0618/040/CL
J0619/040/CL
J0620/040/CL

MODEL	COLOR	MOUNTING SOURCE	Inc	CF	HP (Watts @ 120V)	LED	NOTES
PF3	Black	120"	20"	N/A	10W		
J0610	Black	120"	20"	N/A	10W		See page 87 for ACCESSORIES
J0611	Black	120"	20"	N/A	10W		See page 87 for ACCESSORIES
J0612	Black	120"	20"	N/A	10W		See page 87 for ACCESSORIES
J0613	Black	120"	20"	N/A	10W		See page 87 for ACCESSORIES
J0614	Black	120"	20"	N/A	10W		See page 87 for ACCESSORIES
J0615	Black	120"	20"	N/A	10W		See page 87 for ACCESSORIES
J0616	Black	120"	20"	N/A	10W		See page 87 for ACCESSORIES
J0617	Black	120"	20"	N/A	10W		See page 87 for ACCESSORIES
J0618	Black	120"	20"	N/A	10W		See page 87 for ACCESSORIES
J0619	Black	120"	20"	N/A	10W		See page 87 for ACCESSORIES
J0620	Black	120"	20"	N/A	10W		See page 87 for ACCESSORIES

www.garvergreen.com 1-800-243-AXIS (243-2925) 531 W. Chicago Avenue, Suite 200, Chicago, IL 60642

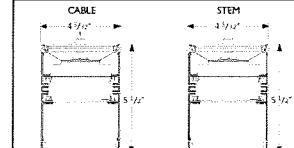
BEAM4 LED PENDANT - INDIRECT

CLAUDE 1-800-243-AXIS (243-2925) 531 W. Chicago Avenue, Suite 200, Chicago, IL 60642

PROJECT INFORMATION

Project: _____
Type: _____
Notes: _____

DIMENSIONS - SECTION VIEWS



PERFORMANCE PER LINEAR FOOT AT 3300K

MAXIMUM LUMEN OUTPUT	WATTAGE	EFFICIENCY
100 lm/ft	71 W/ft	1314 lm/W

Based on a 4-foot luminaire using the driver below. Please consult factory for customer when output and wattage.

ORDERING CODE

1	2	3	4	5	6	7	8	9	10	11	12	13	14	15	16	17	18
1	2	3	4	5	6	7	8	9	10	11	12	13	14	15	16	17	18

PRODUCT SPECIFICATIONS

1	2	3	4	5	6	7	8	9	10	11	12	13	14	15	16	17	18
1	2	3	4	5	6	7	8	9	10	11	12	13	14	15	16	17	18

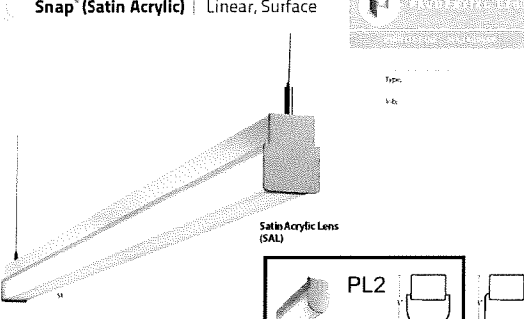
14. MOUNTING/SUSPENSION
15. BATTERY (OPTIONAL)
16. OTHER (OPTIONAL)
17. IC CONTROLS (OPTIONAL)
18. CUSTOM (OPTIONAL)

www.garvergreen.com 1-800-243-AXIS (243-2925) 531 W. Chicago Avenue, Suite 200, Chicago, IL 60642

Snap (Satin Acrylic) | Linear, Surface

www.garvergreen.com 1-800-243-AXIS (243-2925) 531 W. Chicago Avenue, Suite 200, Chicago, IL 60642

PL1
PL2



PERFORMANCE PER LINEAR FOOT AT 3300K

MAXIMUM LUMEN OUTPUT	WATTAGE	EFFICIENCY
100 lm/ft	71 W/ft	1314 lm/W

Based on a 4-foot luminaire using the driver below. Please consult factory for customer when output and wattage.

ORDERING CODE

1	2	3	4	5	6	7	8	9	10	11	12	13	14	15	16	17	18
1	2	3	4	5	6	7	8	9	10	11	12	13	14	15	16	17	18

PRODUCT SPECIFICATIONS

1	2	3	4	5	6	7	8	9	10	11	12	13	14	15	16	17	18
1	2	3	4	5	6	7	8	9	10	11	12	13	14	15	16	17	18

14. MOUNTING/SUSPENSION
15. BATTERY (OPTIONAL)
16. OTHER (OPTIONAL)
17. IC CONTROLS (OPTIONAL)
18. CUSTOM (OPTIONAL)

www.garvergreen.com 1-800-243-AXIS (243-2925) 531 W. Chicago Avenue, Suite 200, Chicago, IL 60642

GARVER GREEN

Madison, Wisconsin

3241 GARVER GREEN
MADISON, WI 53704

Owner: GARVER FEED HILL LLC
1001 W. Chicago Avenue, Suite 200
Chicago, IL 60642

BAUM REVISION

real estate development

SMITHGROUP JJR

STRUCTURAL integrity

design coalition Architects • Madison, WI

BACHMANN CONSTRUCTION

ISSUED FOR: _____ REV DATE: _____

SEALS AND SIGNATURES

NOT FOR CONSTRUCTION

CITY OF MADISON WISCONSIN

SHEET TITLE: LIGHTING FIXTURE SCHEDULE

PROJECT NUMBER: 20737 000

SHEET NUMBER: E7.2

DATE: 5/9/2016 4:50:03 PM

