

Phase II  
Prism Apartments  
Aerial Site Plan  
January 26, 2021







Prism I  
Contextual Site Images



2902 Dryden Dr.  
Contextual Site Images





ISSUED  
 Issued for UDC Info Submittal - March 3, 2021

PROJECT TITLE  
**PRISM II**  
**APARTMENTS**

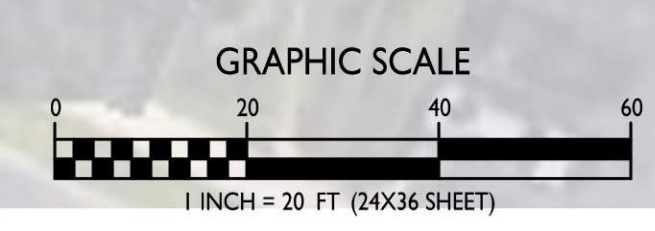
2902 Dryden Drive  
 Madison, Wisconsin  
 SHEET TITLE  
**Site Plan**

SHEET NUMBER

**C-1.1**

PROJECT NO. **2103**  
 © Knothe & Bruce Architects, LLC

**I** SITE PLAN  
 C-1.1 1" = 20'-0"







**knothe • bruce**  
ARCHITECTS

Phone: 7601 University Ave., Ste 201  
608.836.3690 Middleton, WI 53562

ISSUED  
Issued for UDC Informational - March 3, 2021

PROJECT TITLE  
**PRISM II  
APARTMENTS**

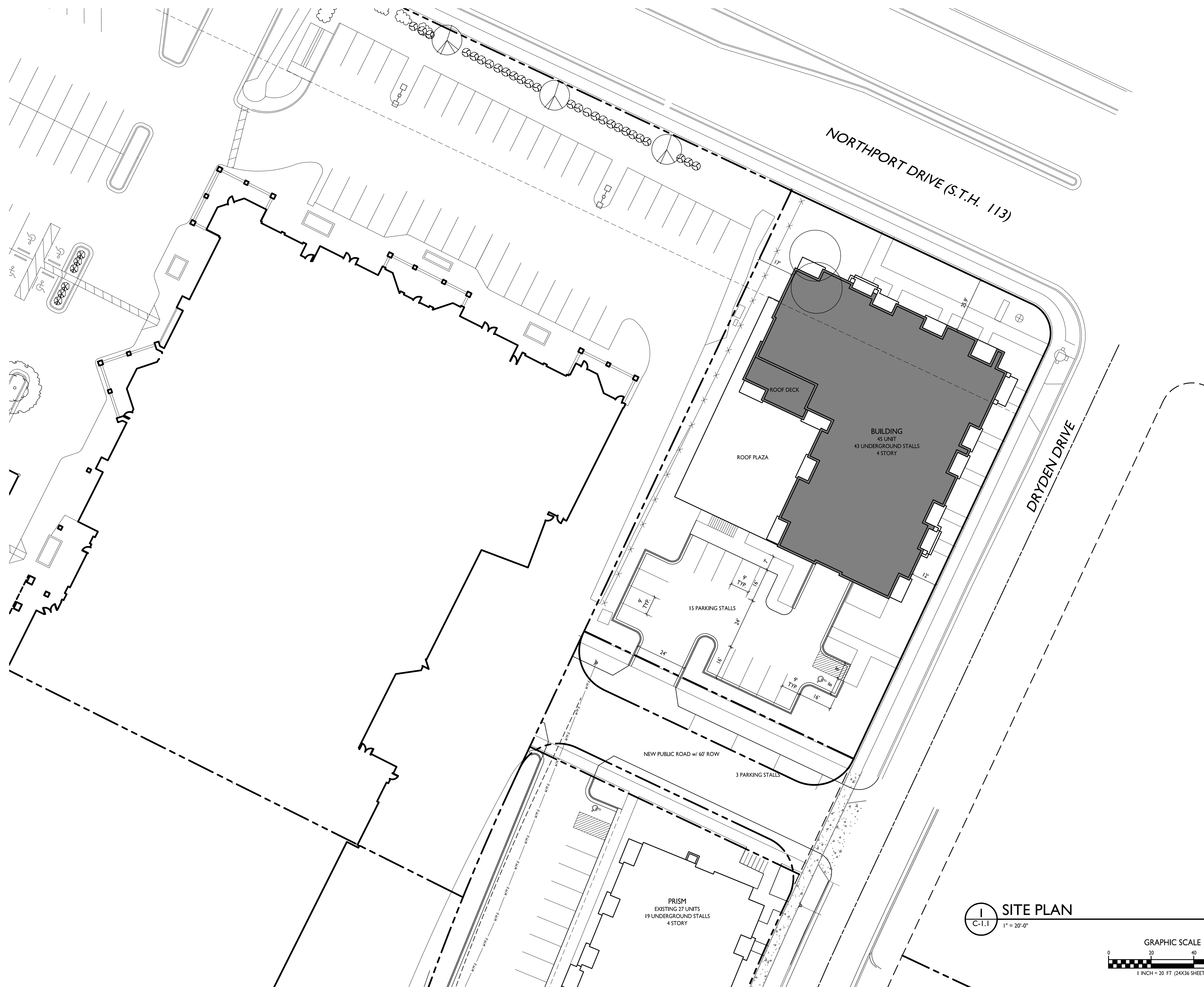
2902 Dryden Drive  
Madison, Wisconsin  
SHEET TITLE  
**Site Plan**

SHEET NUMBER

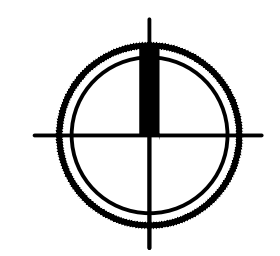
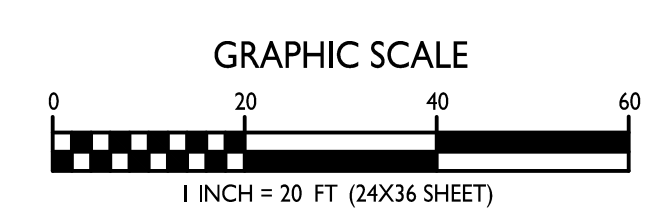
**C-1.1**

PROJECT NO. **2103**

© Knothe & Bruce Architects, LLC



**SITE PLAN**  
C-1.1 1" = 20'-0"







**knothe • bruce**  
ARCHITECTS

Phone: 7601 University Ave., Ste 201  
608.836.3690 Middleton, WI 53562

ISSUED  
Issued for UDC Informational - March 3, 2021

PROJECT TITLE  
**PRISM II**  
**APARTMENTS**

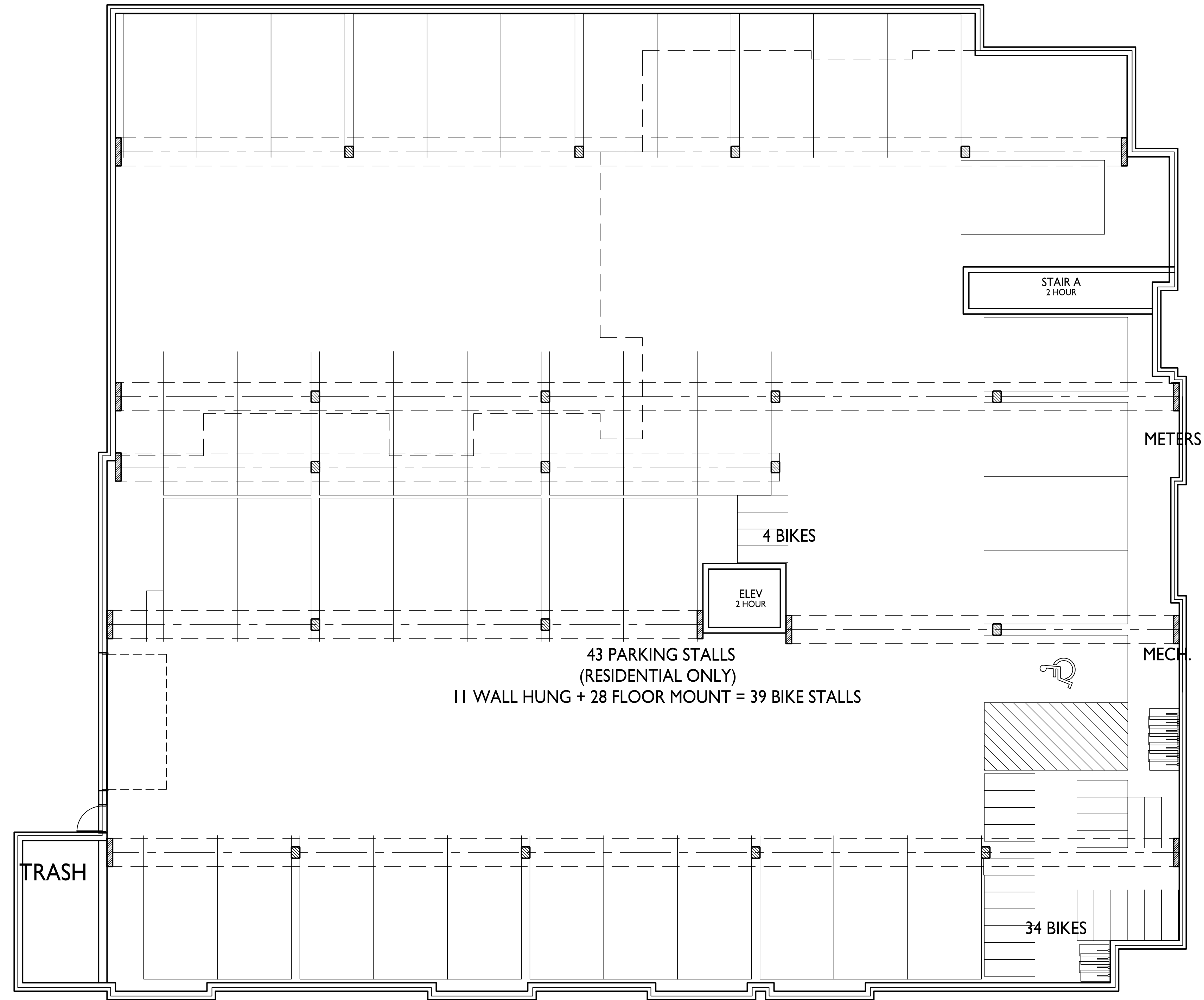
2902 Dryden Drive  
Madison, Wisconsin  
SHEET TITLE  
**Basement Floor**  
**Plan**

SHEET NUMBER

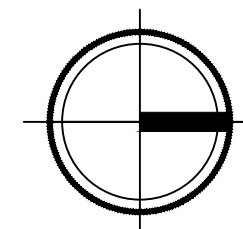
**A-1.0**

PROJECT NO. **2103**

© Knothe & Bruce Architects, LLC



**1** BASEMENT FLOOR PLAN  
A-1.0 1/8" = 1'-0"







**knothe • bruce**  
ARCHITECTS

Phone: 7601 University Ave., Ste 201  
608.836.3690 Middleton, WI 53562

ISSUED  
Issued for UDC Informational - March 3, 2021

PROJECT TITLE  
**PRISM II**  
APARTMENTS

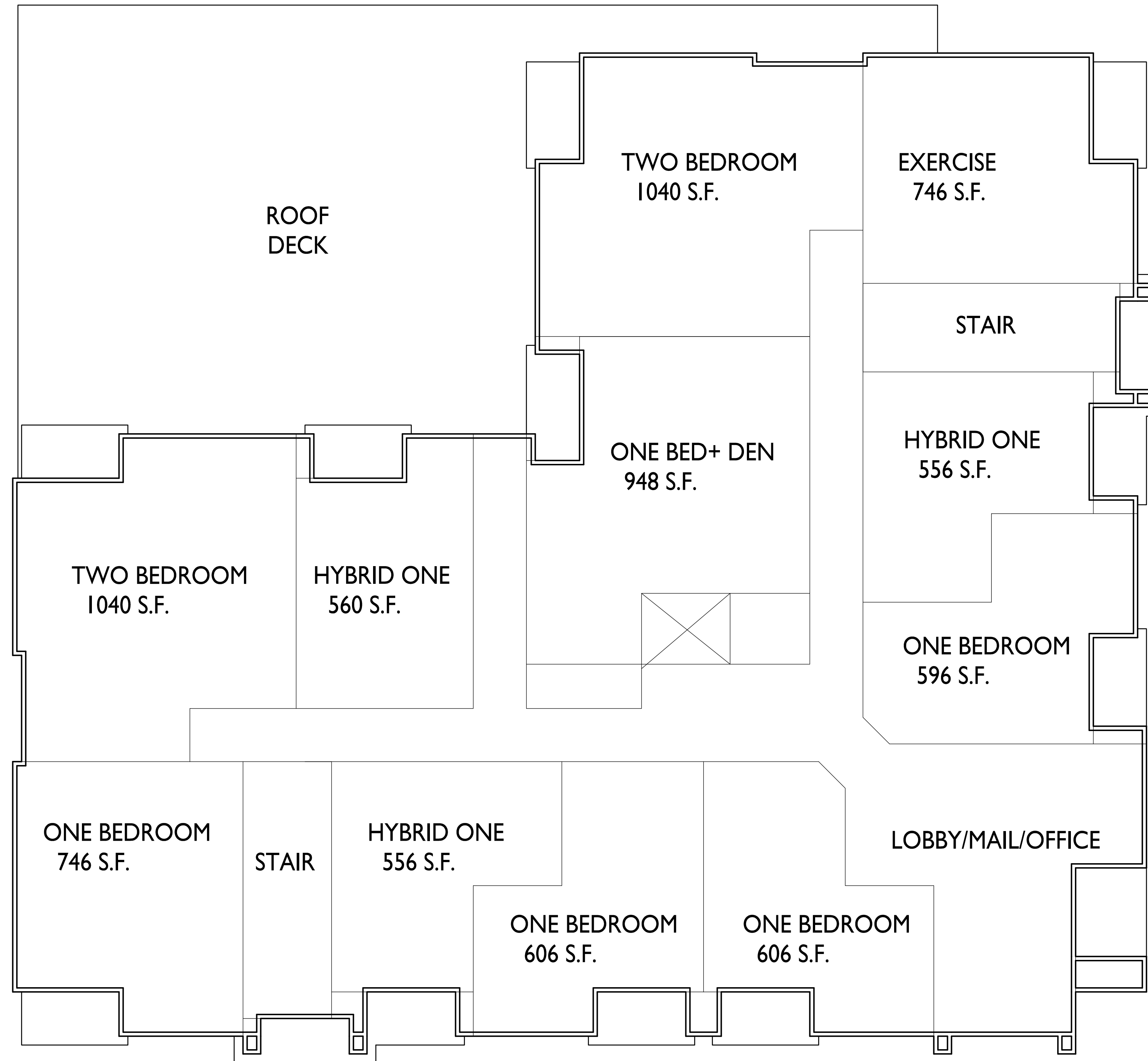
2902 Dryden Drive  
Madison, Wisconsin  
SHEET TITLE  
**First Floor Plan**

SHEET NUMBER

**A-1.1**

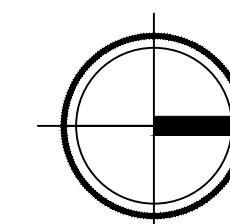
PROJECT NO. **2103**

© Knothe & Bruce Architects, LLC



1 BED (HYBRID)	9
1 BEDROOM	25
1 BED + DEN	4
2 BEDROOM	7
	45

**1 FIRST FLOOR PLAN**  
A-1.1 1/8" = 1'-0"

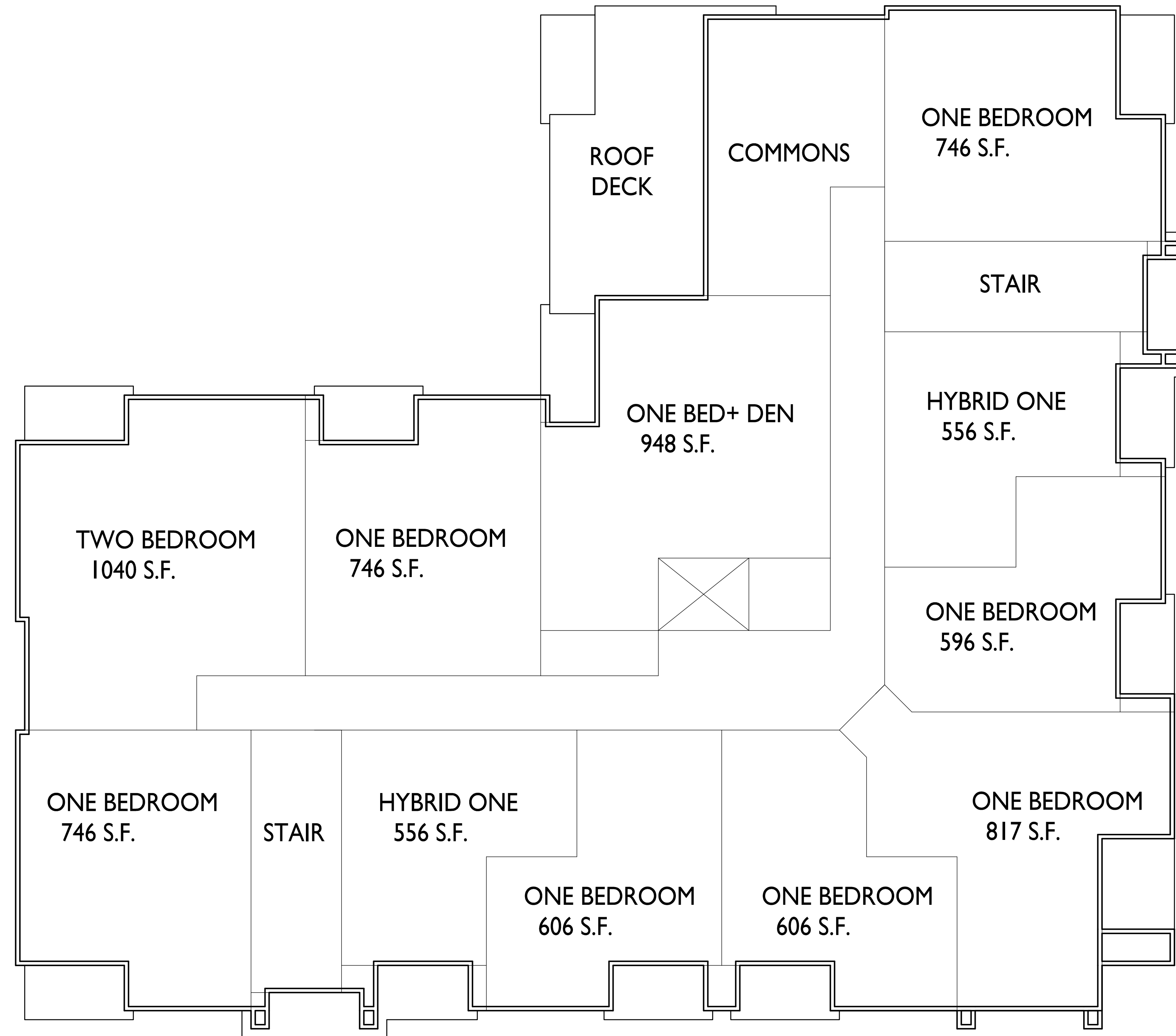






**knothe • bruce**  
ARCHITECTS

Phone: 7601 University Ave., Ste 201  
608.836.3690 Middleton, WI 53562

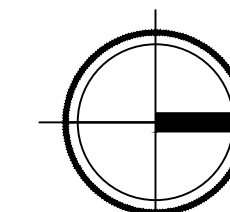


ISSUED  
Issued for UDC Informational - March 3, 2021

PROJECT TITLE  
**PRISM II**  
**APARTMENTS**

2902 Dryden Drive  
Madison, Wisconsin  
SHEET TITLE  
**Fourth Floor Plan**

**1** FOURTH FLOOR PLAN  
A-1.4 1/8" = 1'-0"



SHEET NUMBER

**A-1.4**

PROJECT NO. **2103**

© Knothe & Bruce Architects, LLC





**1** ELEVATION - NORTH COLOR  
A-2.3 1/8" = 1'-0"



**2** ELEVATION - SOUTH COLOR  
A-2.3 1/8" = 1'-0"

EXTERIOR MATERIAL SCHEDULE		
BUILDING ELEMENT	MANUFACTURER	COLOR
(#1) - REVEAL COMPOSITE PANELS	JAMES HARDIE	ARCTIC WHITE
(#2) - 6" COMPOSITE LAP SIDING	JAMES HARDIE	RICH ESPRESSO
(#3) - 6" COMPOSITE LAP SIDING	JAMES HARDIE	WOODTONE SUMMER WHEAT
(#4) - REVEAL COMPOSITE PANELS	JAMES HARDIE	HL - 0599 FLORIDA WATERS
COMPOSITE TRIM	JAMES HARDIE	MATCH ADJ. SIDING COLOR
(#5) - STONE VENEER	ROCKCAST	SLATE
(#6) - CAST STONE BANDS & SILLS	ROCKCAST	SLATE
(#7) - COMPOSITE WINDOWS	ANDERSEN 100	DARK BRONZE
(#8) - ALUM. STOREFRONT	N/A	DARK BRONZE ANODIZED
CANOPY & BAY SOFFITS	JAMES HARDIE	COLOR TO MATCH ADJ. TRIM/SIDING
(#9) - RAILINGS & HANDRAILS	SUPERIOR	DARK BRONZE





1 ELEVATION - EAST COLOR  
A-2.4 1/8" = 1'-0"



2 ELEVATION - WEST COLOR  
A-2.4 1/8" = 1'-0"

EXTERIOR MATERIAL SCHEDULE		
BUILDING ELEMENT	MANUFACTURER	COLOR
(#1) - REVEAL COMPOSITE PANELS	JAMES HARDIE	ARCTIC WHITE
(#2) - 6" COMPOSITE LAP SIDING	JAMES HARDIE	RICH ESPRESSO
(#3) - 6" COMPOSITE LAP SIDING	JAMES HARDIE	WOODTONE SUMMER WHEAT
(#4) - REVEAL COMPOSITE PANELS	JAMES HARDIE	HL - 0599 FLORIDA WATERS
COMPOSITE TRIM	JAMES HARDIE	MATCH ADJ. SIDING COLOR
(#5) - STONE VENEER	ROCKCAST	SLATE
(#6) - CAST STONE BANDS & SILLS	ROCKCAST	SLATE
(#7) - COMPOSITE WINDOWS	ANDERSEN 100	DARK BRONZE
(#8) - ALUM. STOREFRONT	N/A	DARK BRONZE ANODIZED
CANOPY & BAY SOFFITS	JAMES HARDIE	COLOR TO MATCH ADJ. TRIM/SIDING
(#9) - RAILINGS & HANDRAILS	SUPERIOR	DARK BRONZE

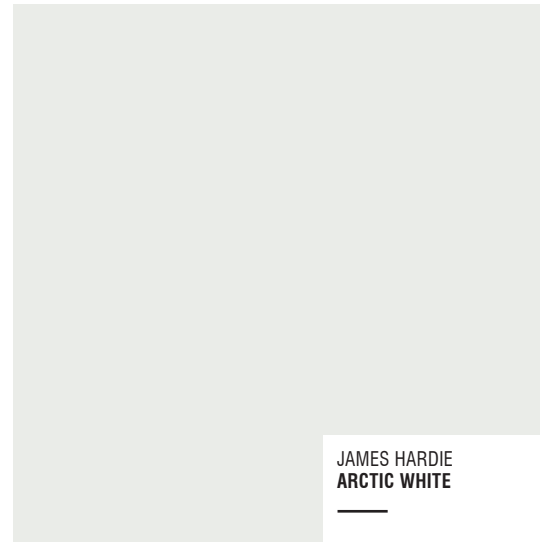




Phase II  
Prism Apartments  
Existing Prism 1 Building  
March 26, 2021

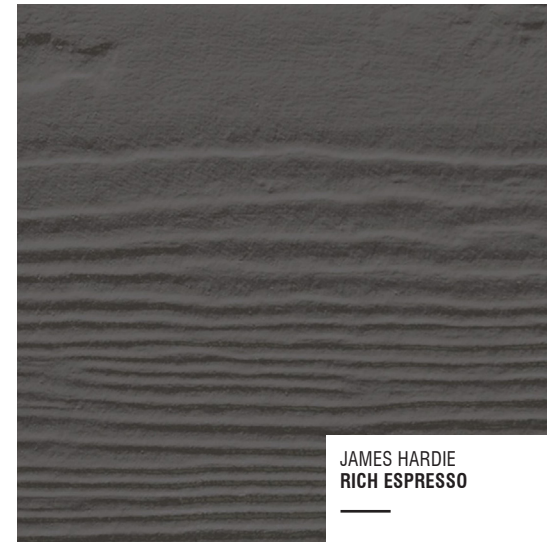






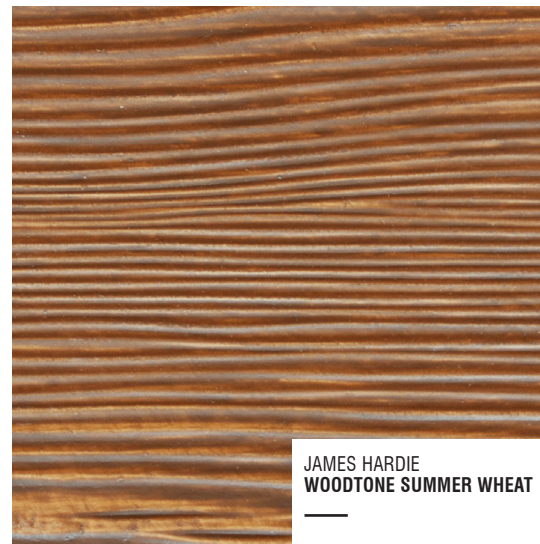
JAMES HARDIE  
ARCTIC WHITE

#1 - REVEAL COMPOSITE PANELS



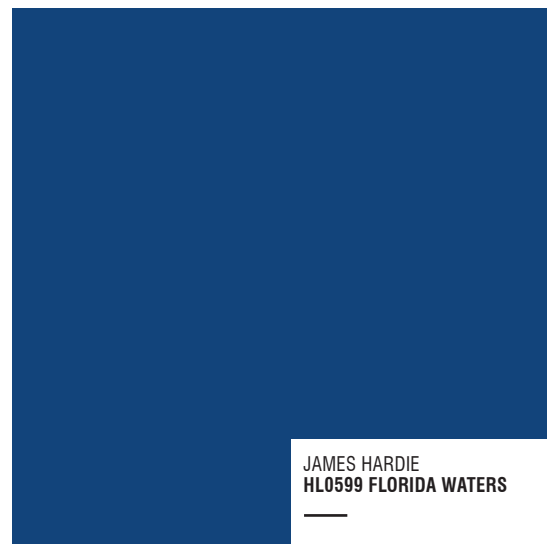
JAMES HARDIE  
RICH ESPRESSO

#2 - COMPOSITE LAP SIDING



JAMES HARDIE  
WOODTONE SUMMER WHEAT

#3 - COMPOSITE LAP SIDING



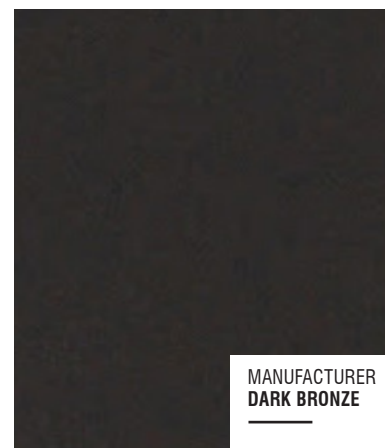
JAMES HARDIE  
HL0599 FLORIDA WATERS

#4 - REVEAL COMPOSITE PANELS



ROCKCAST  
SLATE

CAST STONE VENEER, SILLS & BANDS



MANUFACTURER  
DARK BRONZE

ALUM. STOREFRONT  
COMPOSITE WINDOWS  
ALUM. RAILINGS

EXTERIOR MATERIAL SCHEDULE		
BUILDING ELEMENT	MANUFACTURER	COLOR
(#1) - REVEAL COMPOSITE PANELS	JAMES HARDIE	ARCTIC WHITE
(#2) - 6" COMPOSITE LAP SIDING	JAMES HARDIE	RICH ESPRESSO
(#3) - 6" COMPOSITE LAP SIDING	JAMES HARDIE	WOODTONE SUMMER WHEAT
(#4) - REVEAL COMPOSITE PANELS	JAMES HARDIE	HL - 0599 FLORIDA WATERS
COMPOSITE TRIM	JAMES HARDIE	MATCH ADJ. SIDING COLOR
(#5) - STONE VENEER	ROCKCAST	SLATE
(#6) - CAST STONE BANDS & SILLS	ROCKCAST	SLATE
(#7) - COMPOSITE WINDOWS	ANDERSEN 100	DARK BRONZE
(#8) - ALUM. STOREFRONT	N/A	DARK BRONZE INODIZED
CANOPY & BAY SOFFITS	JAMES HARDIE	COLOR TO MATCH ADJ. TRIM/SIDING
(#9) - RAILINGS & HANDRAILS	SUPERIOR	DARK BRONZE





# PRISM II APARTMENTS

2902 DRYDEN DRIVE MADISON, WI  
RENDERED PERSPECTIVE

X-1.0







# PRISM II APARTMENTS

2902 DRYDEN DRIVE MADISON, WI  
RENDERED PERSPECTIVE

X-1.1







# PRISM II APARTMENTS

2902 DRYDEN DRIVE MADISON, WI  
RENDERED PERSPECTIVE

X-1.2

