

Lamp House Block: Existing Building Facades

Design Workshop: November 2013



202
East Washington Avenue



206



212



Parking lot for 212



Addressed on Mifflin
North Webster Street



23-25



19



17



15



Addressed on E Washington

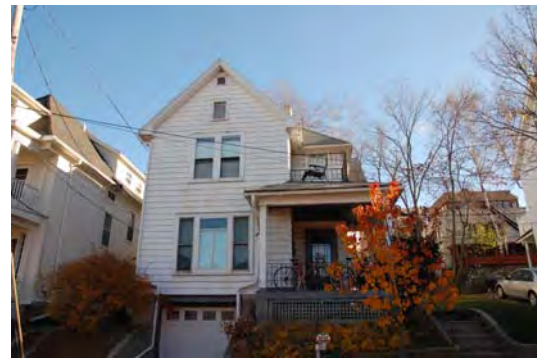


223

East Mifflin Street



219



215



209



201



Parking Lot
North Butler Street



12



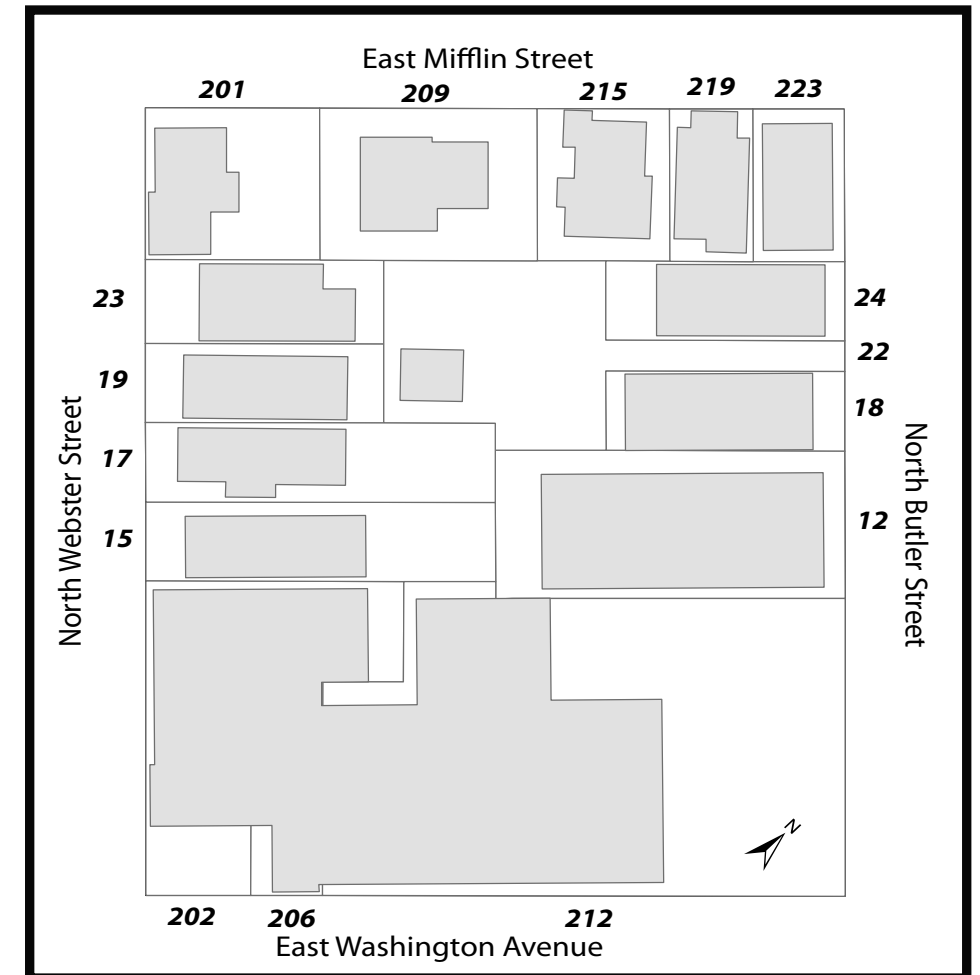
18



22



24

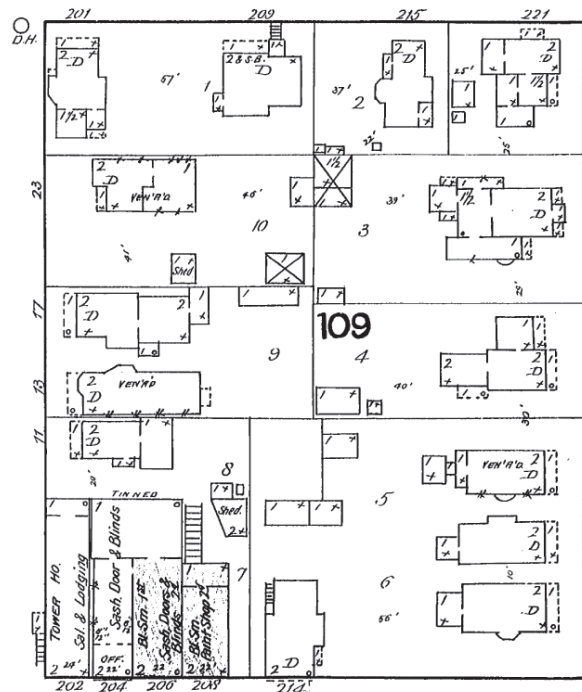


Sanborn Fire Insurance Maps 1892-1951

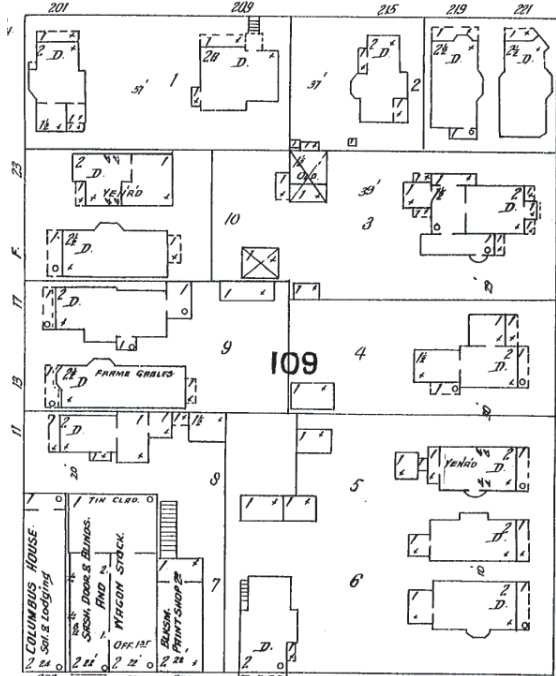
Design Workshop November 2013

North Webster Street

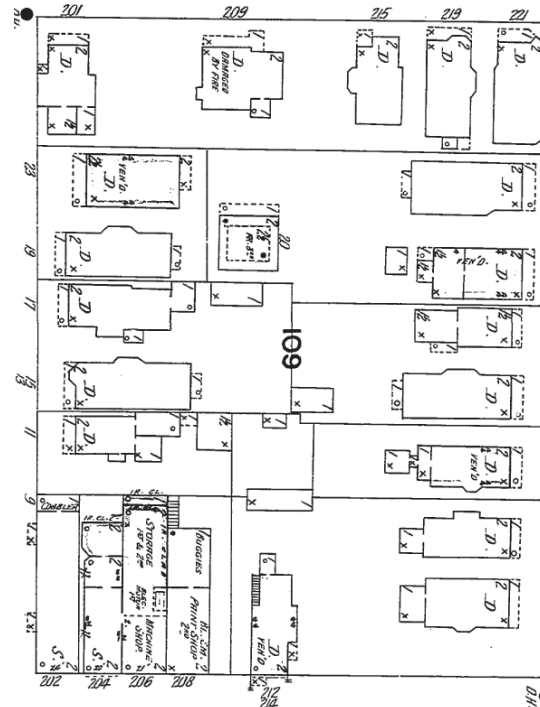
East Mifflin Street



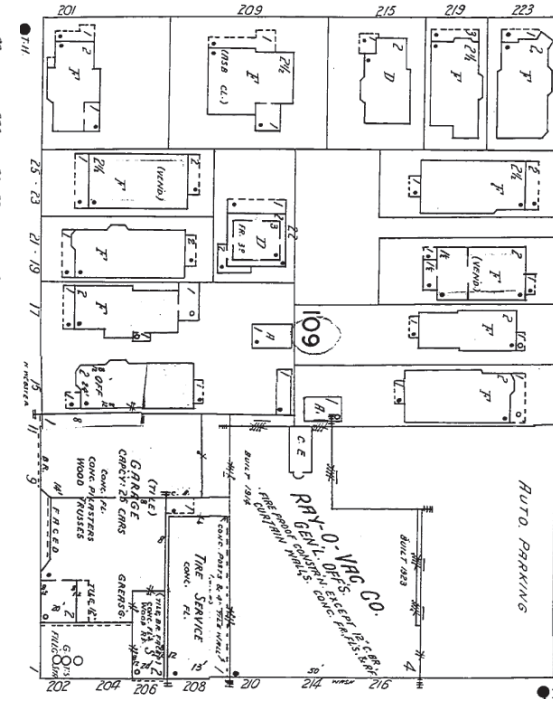
1892



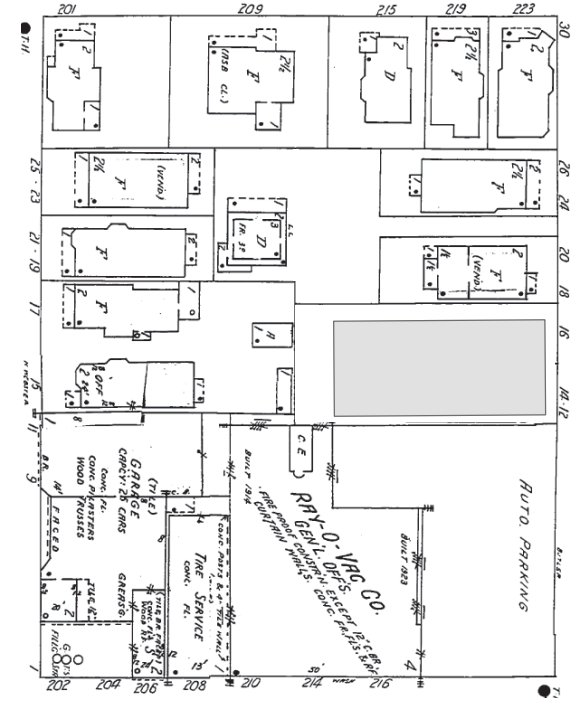
1898



1908



1951



2013*

1951 Map with recent development shown in grey

North Butler Street

East Washington Avenue



Not to scale

E DAYTON ST

N HAMILTON ST

E MIFFLIN ST

N WEBSTER ST

N BUTLER ST

E WASHINGTON AVE

S WEBSTER ST

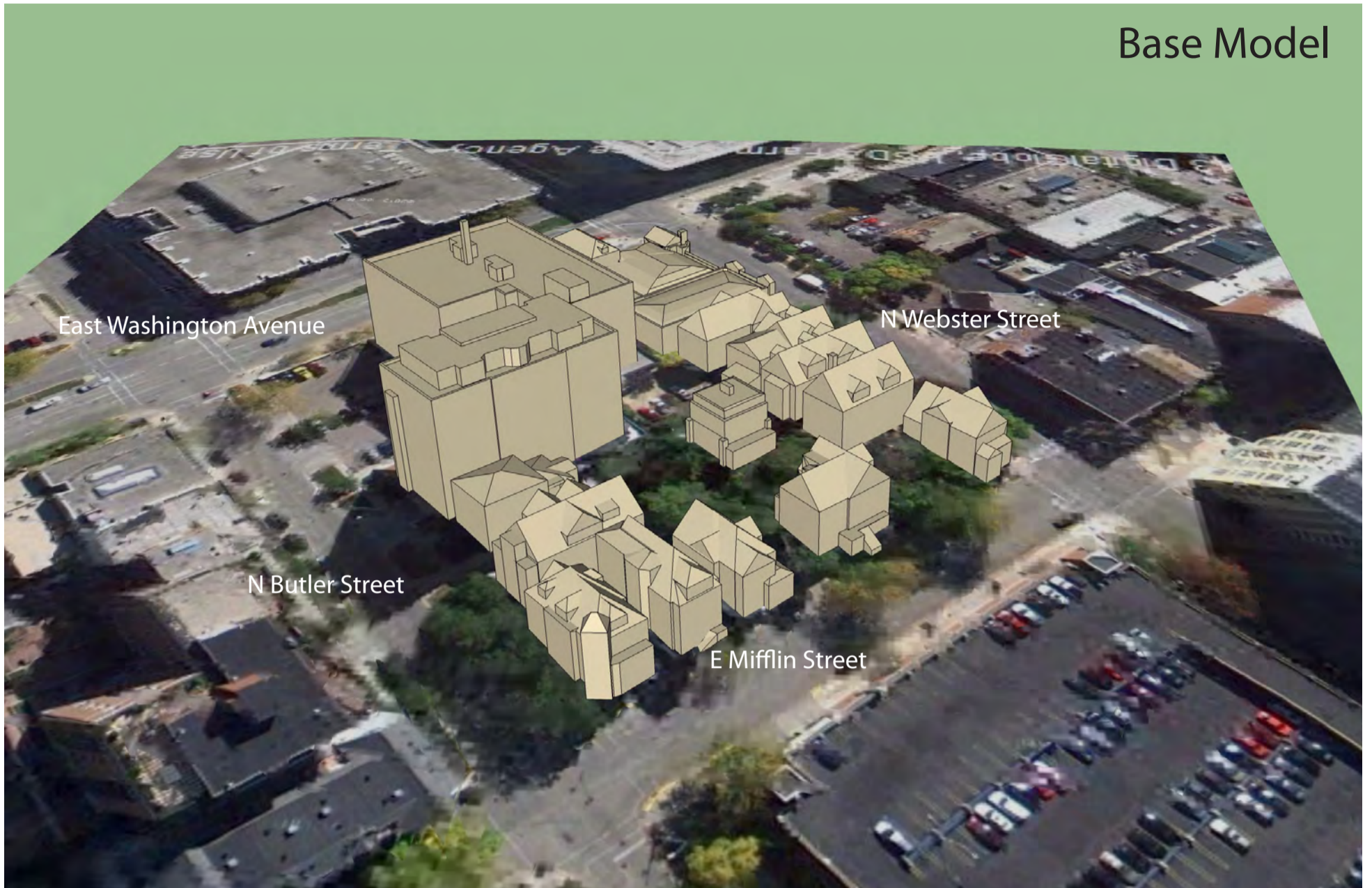
S BUTLER ST



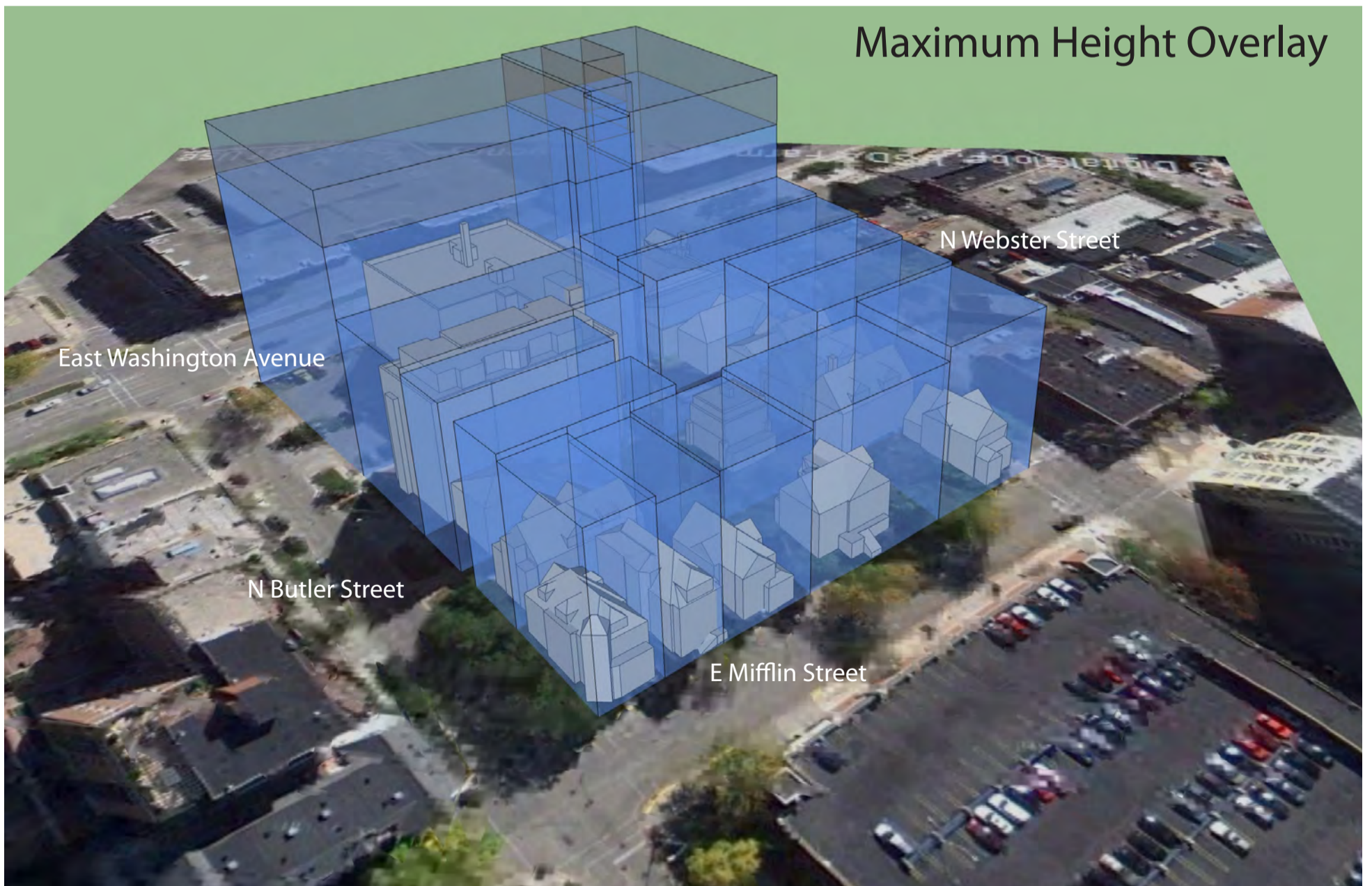
Bird's Eye View of Block

* This 3D model was taken from the City's 2013 Digital Model. The maximum height overlay is taken from the Zoning Code and is illustrated as 6 stories on the north side of the block and 8(+2) stories on the south side of the block.

Base Model



Maximum Height Overlay



* This 3D model was taken from the City's 2013 Digital Model. The maximum height overlay is taken from the Zoning Code and is illustrated as 6 stories on the north side of the block and 8 (+2) stories on the south side of the block.

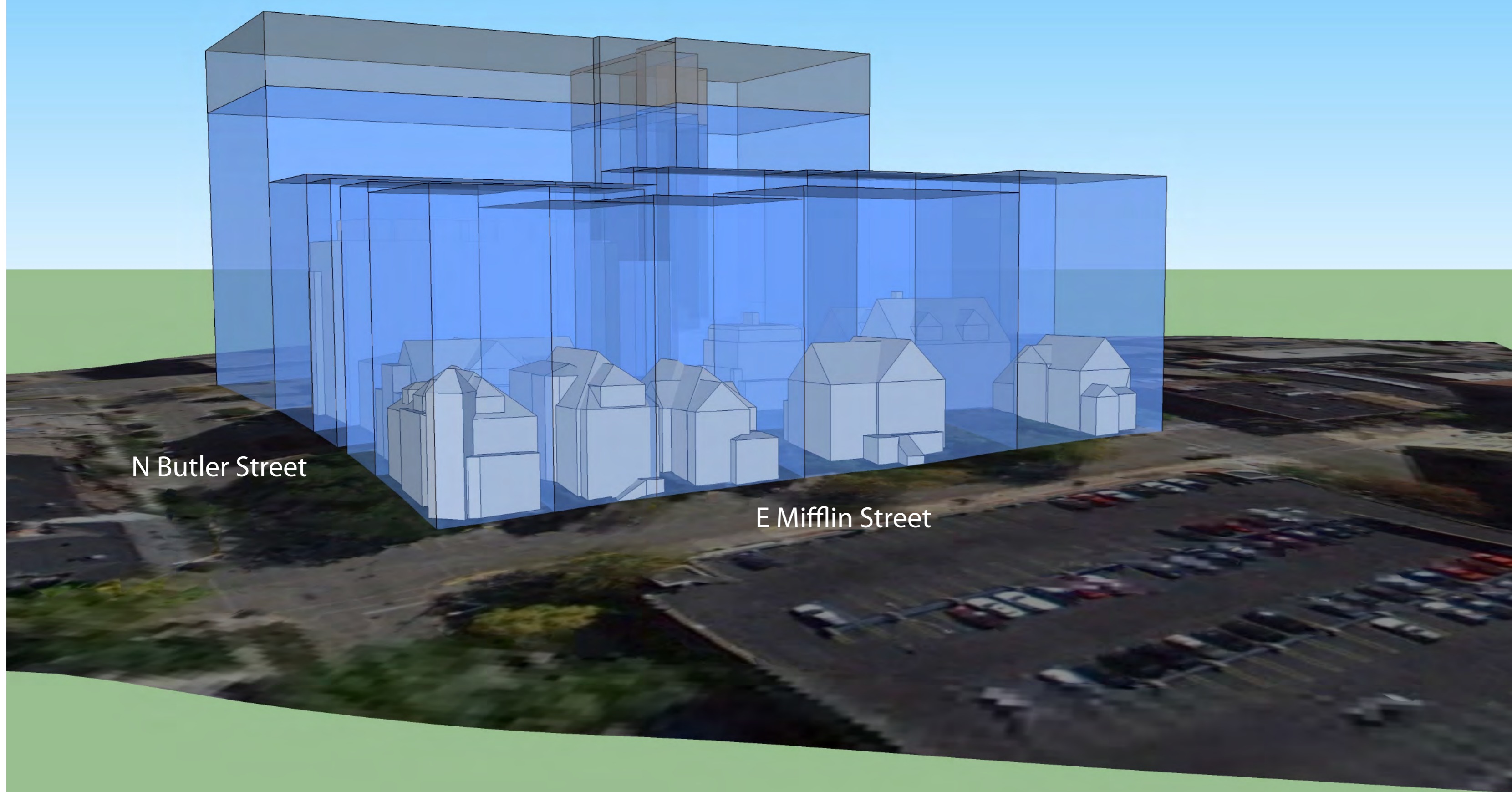
E Mifflin and N Butler Base Model



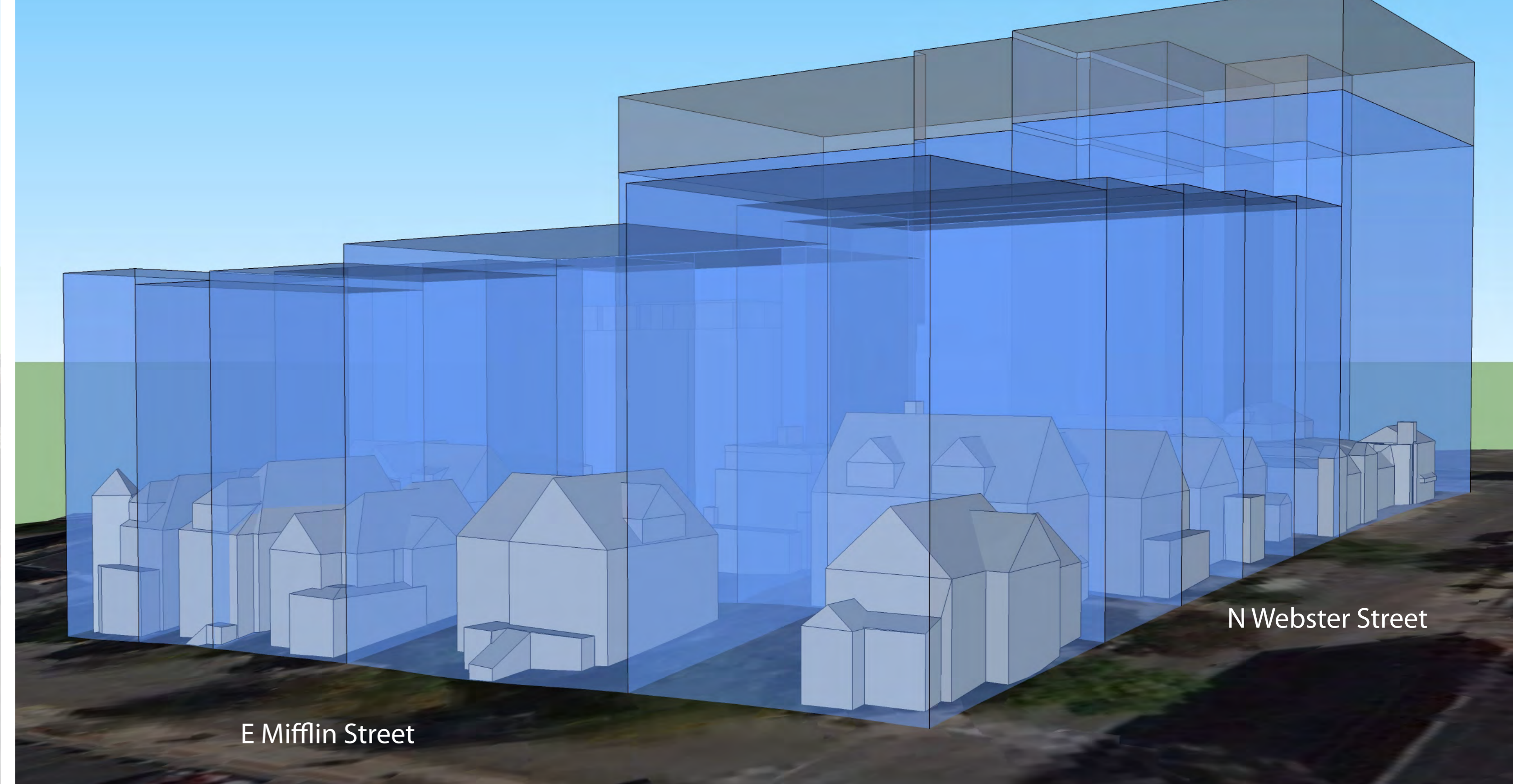
E Mifflin and N Webster Base Model



Maximum Height Overlay



Maximum Height Overlay

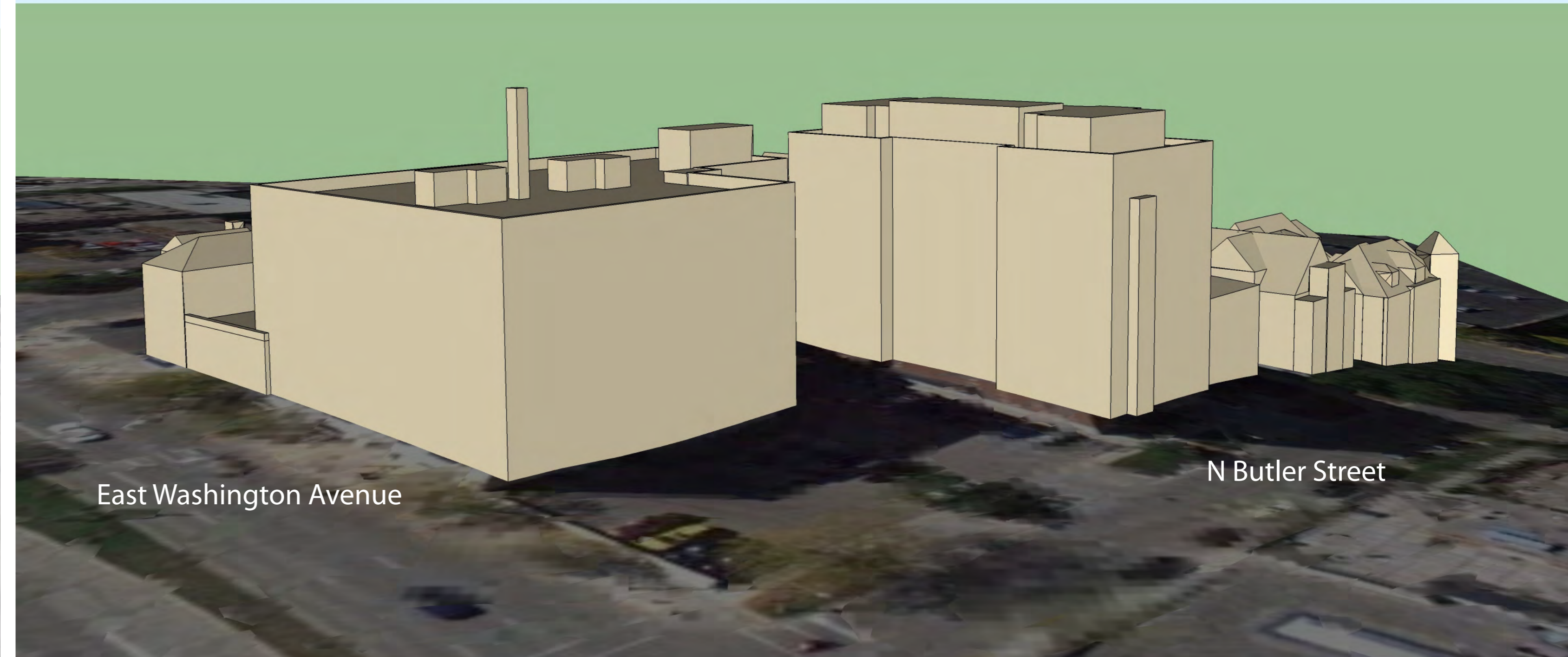


* This 3D model was taken from the City's 2013 Digital Model. The maximum height overlay is taken from the Zoning Code and is illustrated as 6 stories on the north side of the block and 8(+2) stories on the south side of the block.

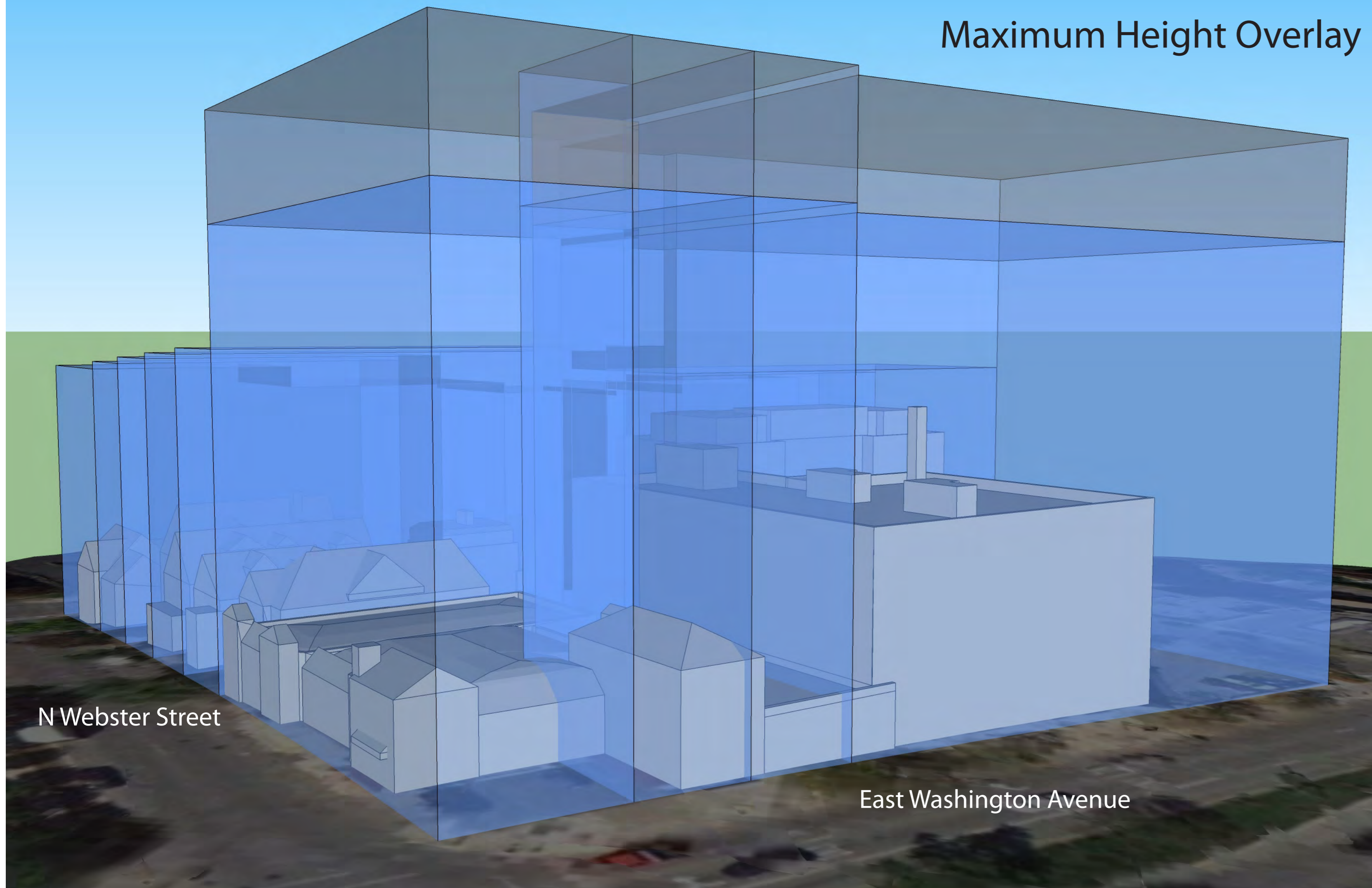
E Washington and N Webster Base Model



E Washington and N Butler Base Model



Maximum Height Overlay



Maximum Height Overlay

