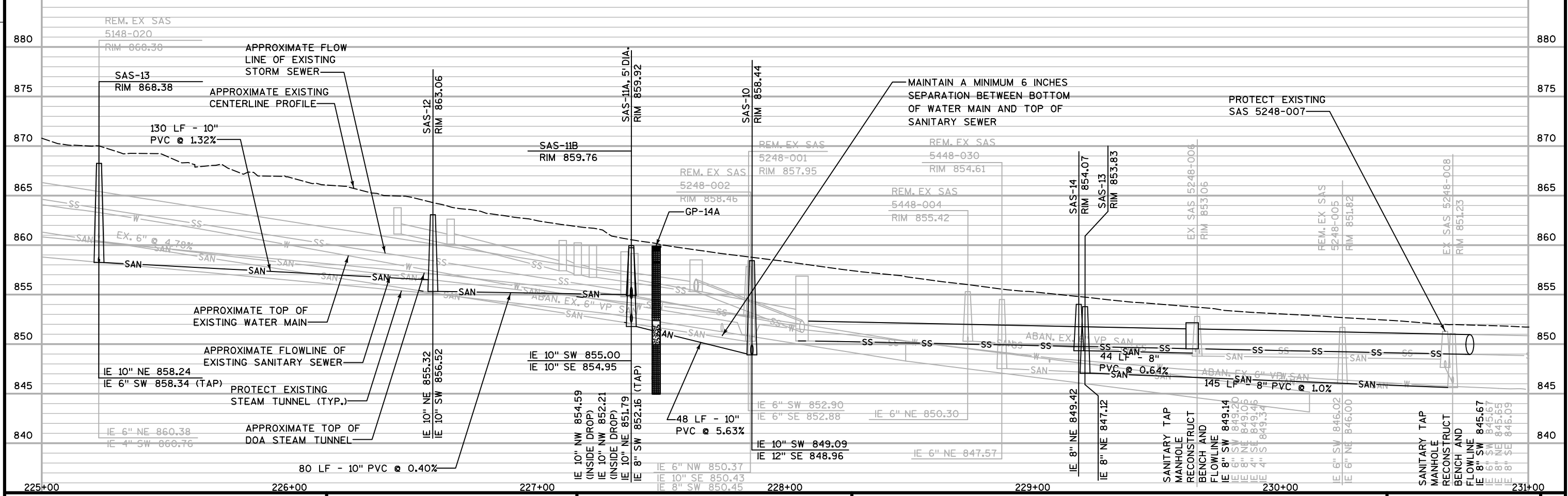


- NOTES:
1. LATERAL LOCATION BASED UPON CCTV LOCATION. FIELD VERIFY ALL SANITARY LATERAL LOCATIONS. INSTALL ELECTRONIC MARKER BALL ABOVE EACH LATERAL ABOVE PROPERTY LINE AND ABOVE LATERAL WYE. EX. 8-IN DIP LINED VP SAN
 2. COORDINATE SERVICE INTERRUPTIONS WITH THE CITY OF MADISON. SOME CONNECTIONS MAY NEED TO BE PERFORMED AT NIGHT TO MINIMIZE DISRUPTION TO UTILITY CUSTOMERS.
 3. UNDERGROUND FACILITIES ANTICIPATED TO BE ABANDONED IN PLACE. (VERIFY WITH OWNER)
 4. CONTRACTOR SHALL REMOVE AND REPLACE SIDEWALK AS NEEDED FOR LATERALS. (MAX OF 4 SIDEWALK SQUARES PER LATERAL)
 5. THE EXACT DIMENSIONS, DEPTH, AND MATERIAL TYPE FOR THE STEAM TUNNEL IS UNKNOWN. CONTRACTOR SHALL USE CAUTION WHILE WORKING IN THE VICINITY OF THE TUNNEL



PROJECT NO: 5400-00-74 HWY: USH 151 COUNTY: DANE SANITARY SEWER SHEET E