

OLIN TURVILLE PARK BOAT LAUNCH IMPROVEMENTS

MUNIS NO. 17186-51-130

City of Madison
Department of Public Works
PARKS DIVISION

City-County Building, Suite 104
210 Martin Luther King, Jr. Blvd.
PO Box 2987
Madison, WI 53701-2987

play
**MADISON
PARKS**



PROJECT:

**OLIN TURVILLE PARK
BOAT LAUNCH
IMPROVEMENTS**

**OLIN TURVILLE PARK
BOAT LAUNCH
1156 OLIN TURVILLE CT
MADISON, WI 53703**

Although every effort has been made in preparing these plans and checking them for accuracy, the contractor and subcontractors must check all details and dimensions of their trade and be responsible for the same.

ITEM	DATE
Drawn by: CCS	9-21-17
Revised by:	

SHEET TITLE:
TITLE

SHEET NUMBER:
1

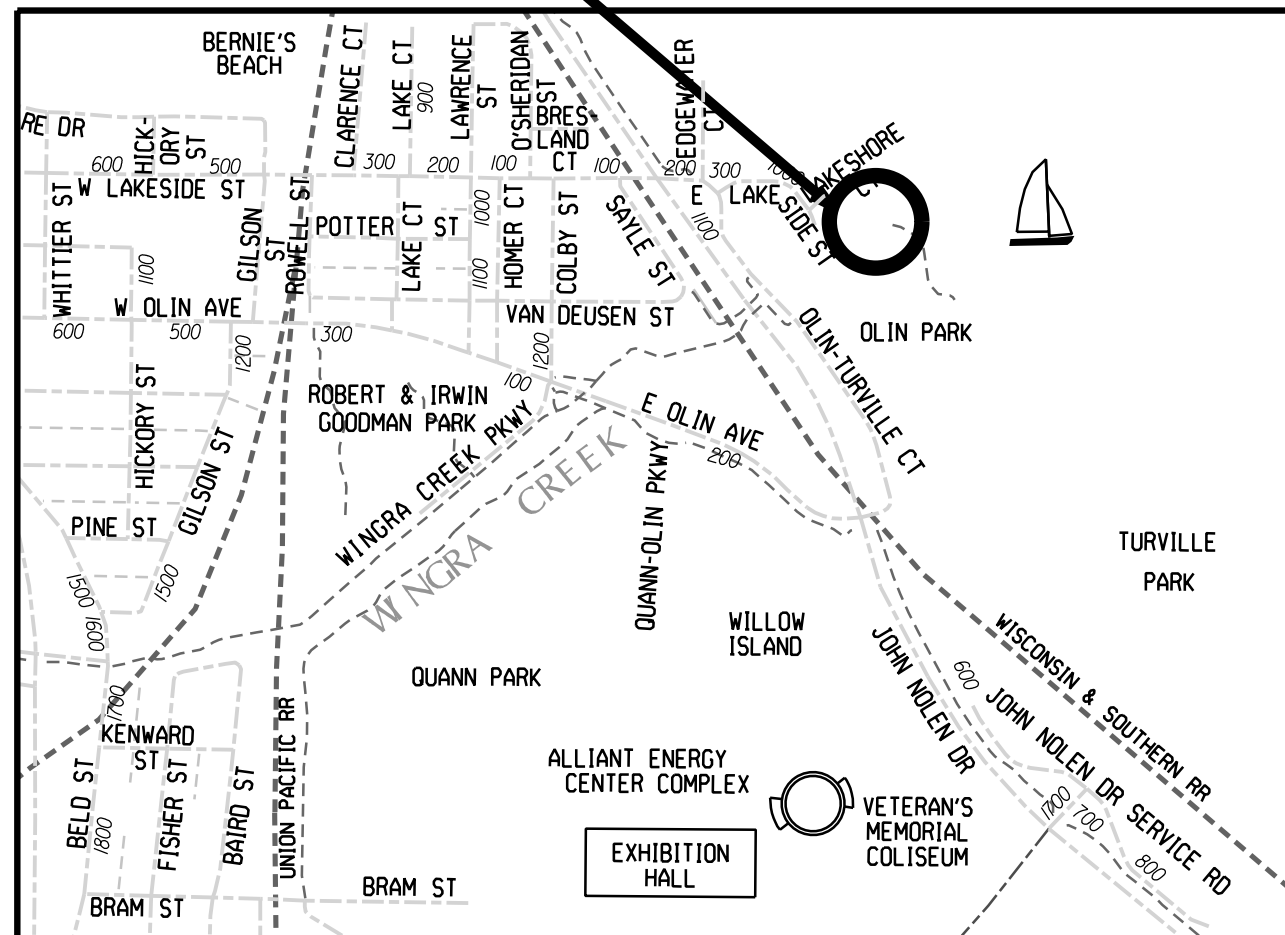
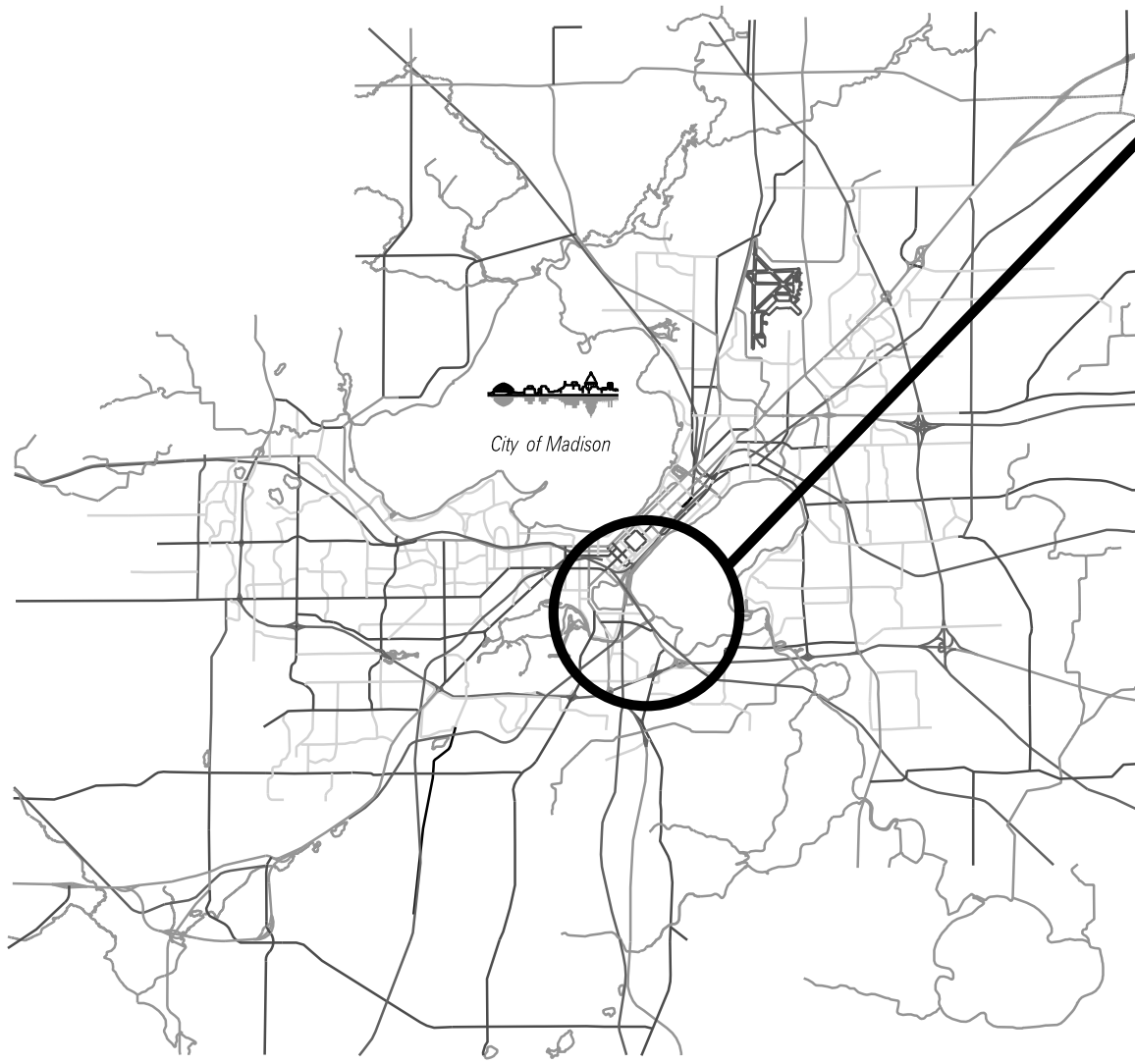
PROJECT LOCATION


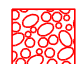

CONVENTIONAL EXISTING UTILITY SIGNS
FIELD VERIFY ALL UTILITY LOCATIONS

GAS	— G —
STORM SEWER	— ST —
SANITARY SEWER	— SAN —
WATER	— W —
OVERHEAD ELECTRIC	— OH —
POWER POLE	⊥

INDEX OF SHEETS


SHEET NO.	1	TITLE
SHEET NO.	P-1	SITE ACCESS AND EROSION CONTROL
SHEET NO.	P-2	REMOVALS
SHEET NO.	P-3	GRADING
SHEET NO.	P-4	RAMP PROFILE AND DETAILS
SHEET NO.	P-5	RESTORATION



-  CONSTRUCTION FENCE
-  CONSTRUCTION ENTRANCE STONE PAD
-  WATER CONTAINMENT STRUCTURE (TIGHT SHEETING)

City of Madison
 Department of Public Works
PARKS DIVISION
 City-County Building, Suite 104
 210 Martin Luther King, Jr. Blvd.
 Madison, WI 53703



Graphical Scale
 0 20 ft 

PROJECT:
**OLIN TURVILLE
 BOAT LAUNCH
 IMPROVEMENTS**

**OLIN TURVILLE PARK
 1156 OLIN TURVILLE CT
 MADISON, WI 53713**

Although every effort has been made in preparing these plans and checking them for accuracy, the contractor and subcontractors must check all details and dimensions of their trade and be responsible for the same.



ITEM	DATE
Drawn by: CCS	8-29-2017
Approved by:	xx-xx-xxxx

PUBLIC WORKS PROJECT #:
####

SHEET TITLE:
**SITE ACCESS AND
 EROSION CONTROL**


SHEET NUMBER:
P-1



 REMOVE EXISTING CONCRETE RAMP
 REMOVE EXISTING ASPHALT

City of Madison
 Department of Public Works
PARKS DIVISION
 City-County Building, Suite 104
 210 Martin Luther King, Jr. Blvd.
 Madison, WI 53703

play
MADISON PARKS

Graphical Scale
 0 20 ft 

PROJECT:
**OLIN TURVILLE
 BOAT LAUNCH
 IMPROVEMENTS**

**OLIN TURVILLE PARK
 1156 OLIN TURVILLE CT
 MADISON, WI 53713**

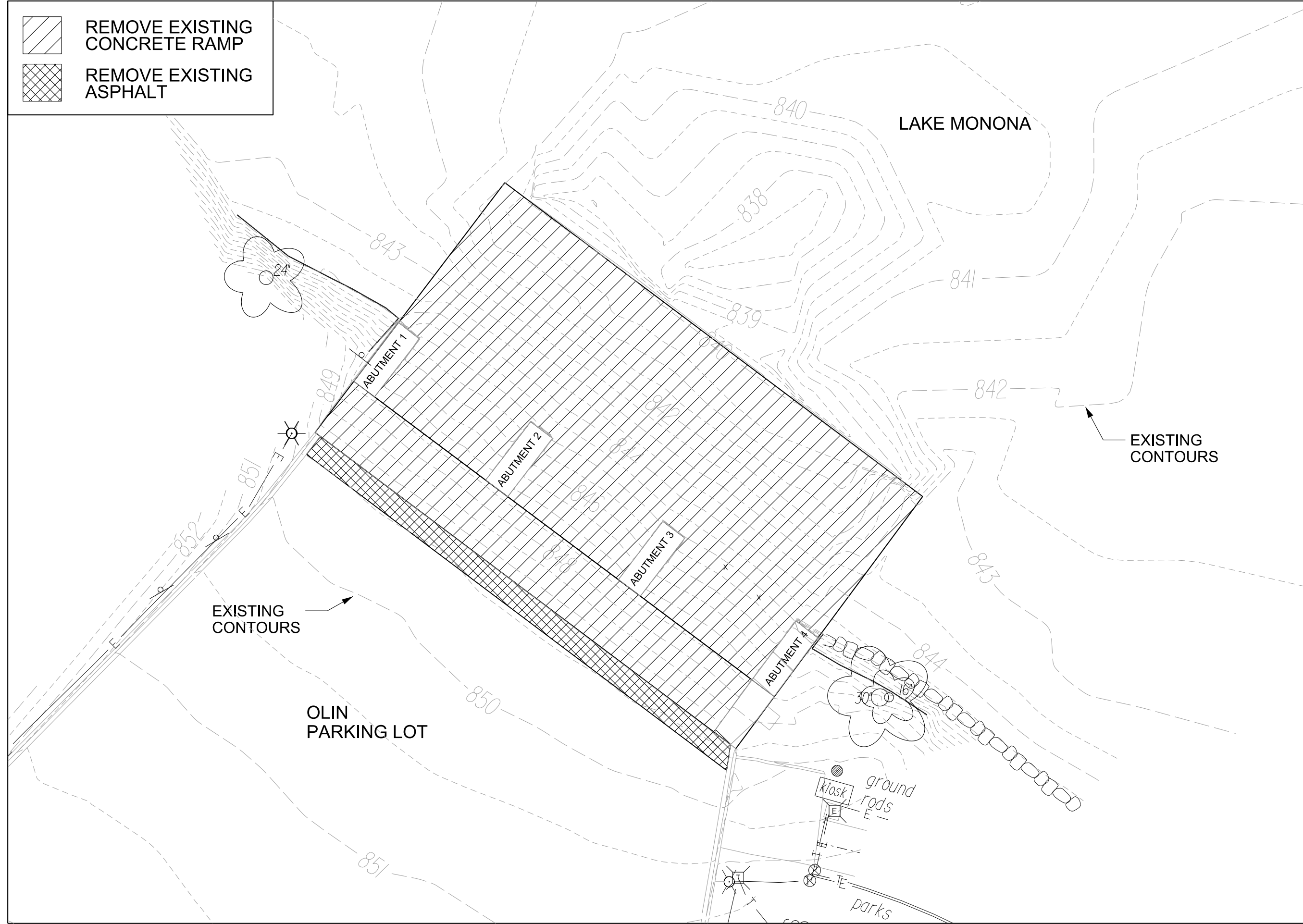
Although every effort has been made in preparing these plans and checking them for accuracy, the contractor and subcontractors must check all details and dimensions of their trade and be responsible for the same.

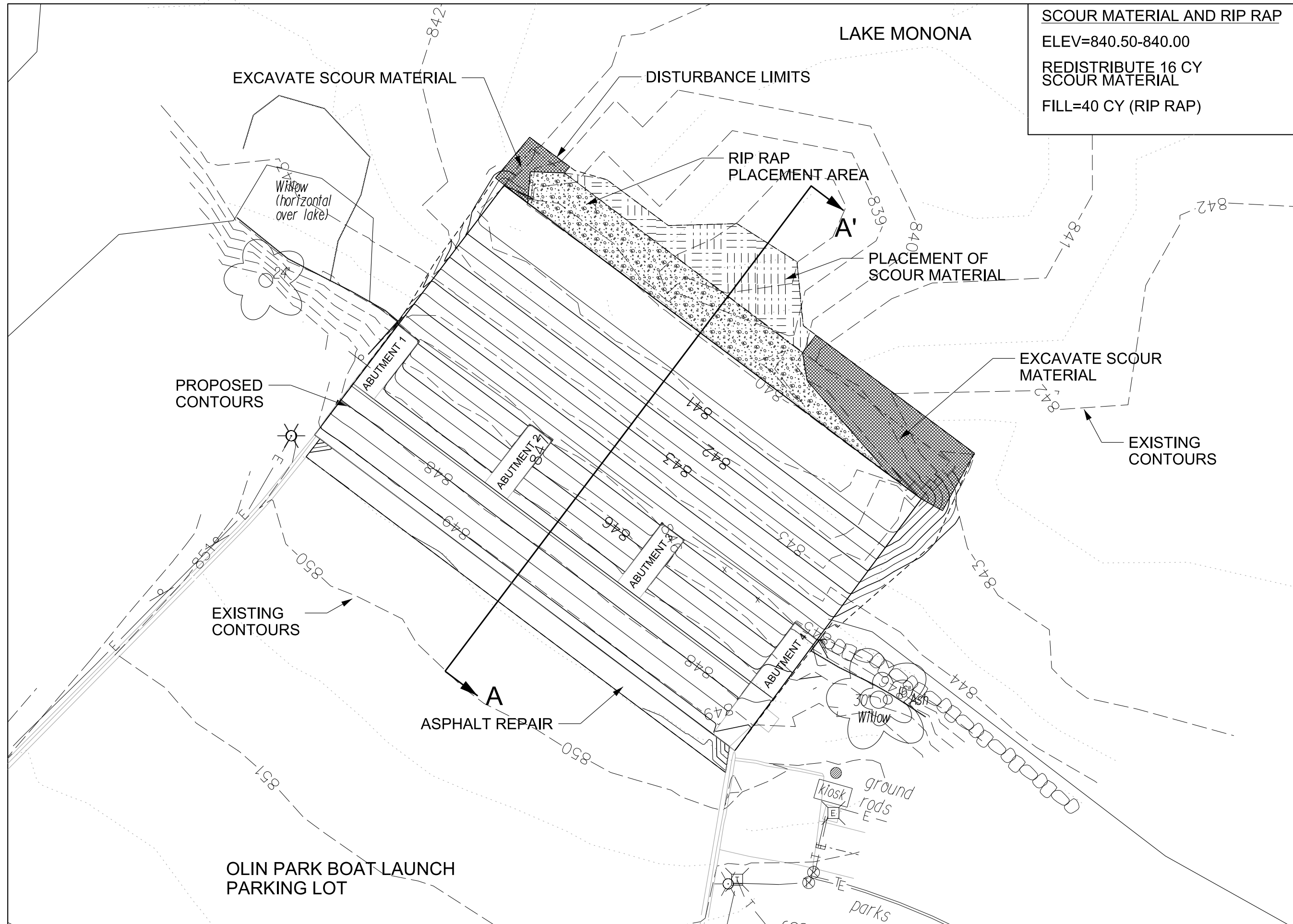
ITEM	DATE
Drawn by: CCS	8-29-2017
Approved by:	xx-xx-xxxx

PUBLIC WORKS PROJECT #:
####

SHEET TITLE:
REMOVALS

SHEET NUMBER:
P-2





SCOUR MATERIAL AND RIP RAP
 ELEV=840.50-840.00
 REDISTRIBUTE 16 CY
 SCOUR MATERIAL
 FILL=40 CY (RIP RAP)

City of Madison
 Department of Public Works
PARKS DIVISION
 City-County Building, Suite 104
 210 Martin Luther King, Jr. Blvd.
 Madison, WI 53703

play
**MADISON
 PARKS**

Graphical Scale
 0 20 ft N

PROJECT:
**OLIN TURVILLE
 BOAT LAUNCH
 IMPROVEMENTS**

**OLIN TURVILLE PARK
 1156 OLIN TURVILLE CT
 MADISON, WI 53713**

Although every effort has been made in preparing these plans and checking them for accuracy, the contractor and subcontractors must check all details and dimensions of their trade and be responsible for the same.

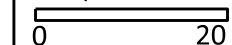
ITEM	DATE
Drawn by: CCS	8-29-2017
Approved by:	xx-xx-xxxx

PUBLIC WORKS PROJECT #:
####

SHEET TITLE:
SCOUR MATERIALS

SHEET NUMBER:
P-3

Graphical Scale



PROJECT:

**OLIN PARK BOAT
 LAUNCH
 IMPROVEMENTS**

**OLIN TURVILLE PARK
 1156 OLIN TURVILLE CT
 MADISON, WI 53703**

Although every effort has been made in preparing these plans and checking them for accuracy, the contractor and subcontractors must check all details and dimensions of their trade and be responsible for the same.

ITEM	DATE
Drawn by:	xx-xx-xxxx
Approved by:	xx-xx-xxxx

PUBLIC WORKS PROJECT #:

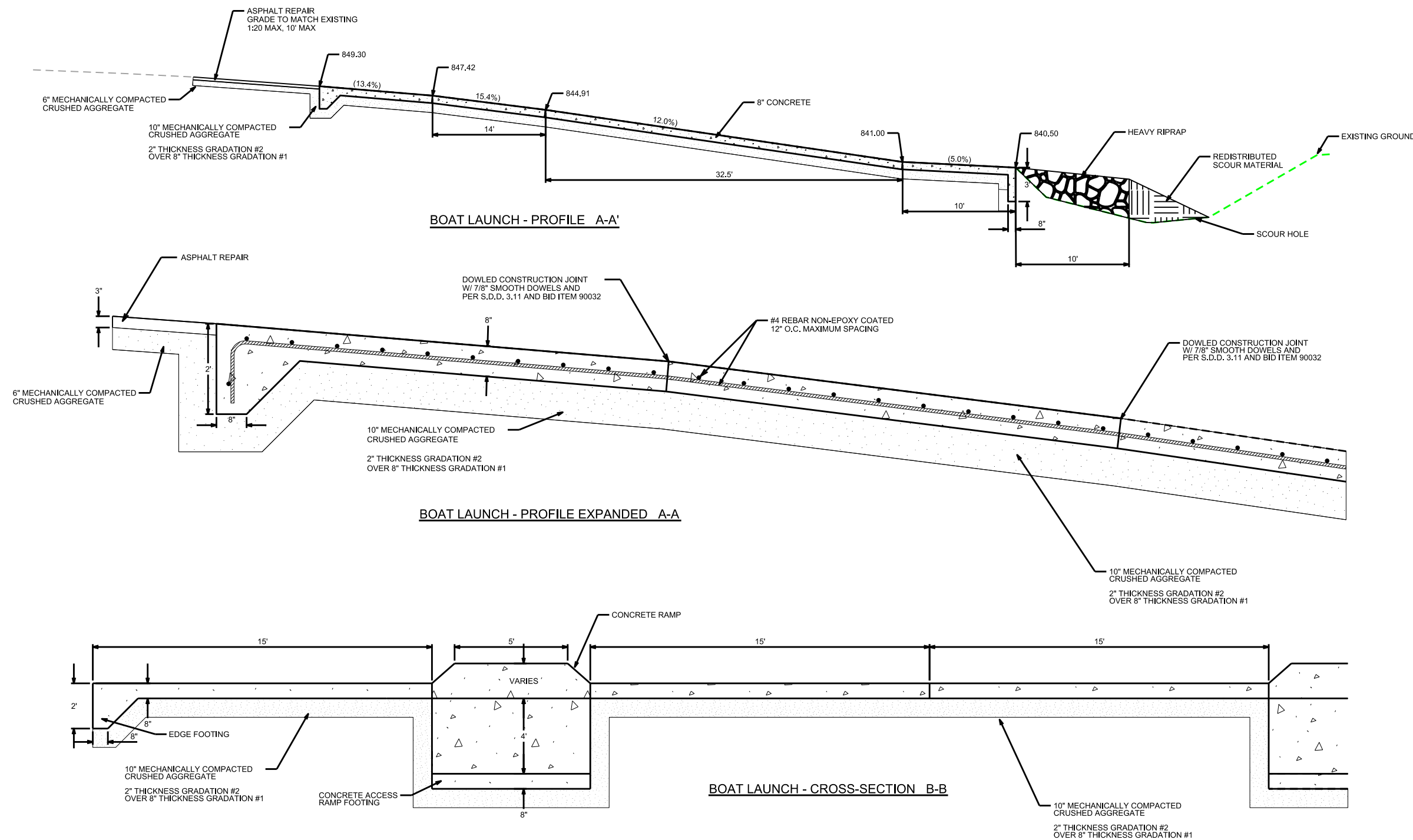
####

SHEET TITLE:

PROFILE AND DETAILS

SHEET NUMBER:

P-4

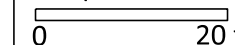


City of Madison
 Department of Public Works
PARKS DIVISION

City-County Building, Suite 104
 210 Martin Luther King, Jr. Blvd.
 Madison, WI 53703

play
**MADISON
 PARKS**

Graphical Scale



PROJECT:

*OLIN TURVILLE
 BOAT LAUNCH
 IMPROVEMENTS*

*OLIN TURVILLE PARK
 1156 OLIN TURVILLE CT
 MADISON, WI 53713*

Although every effort has been made in preparing these plans and checking them for accuracy, the contractor and subcontractors must check all details and dimensions of their trade and be responsible for the same.

ITEM	DATE
Drawn by: CCS	8-29-2017
Approved by:	xx-xx-xxxx

PUBLIC WORKS PROJECT #:

####

SHEET TITLE:

RESTORATION

SHEET NUMBER:

P-5

