



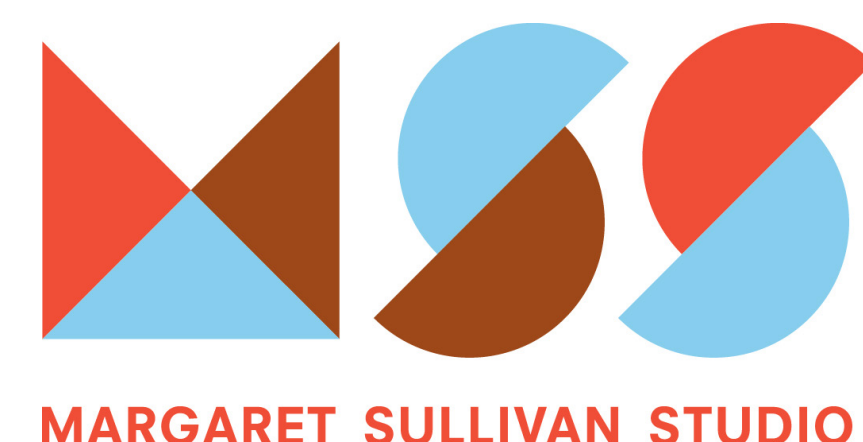
# IMAGINATION CENTER AT REINDAHL PARK

## 100% CONSTRUCTION DOCUMENTS DRAWINGS

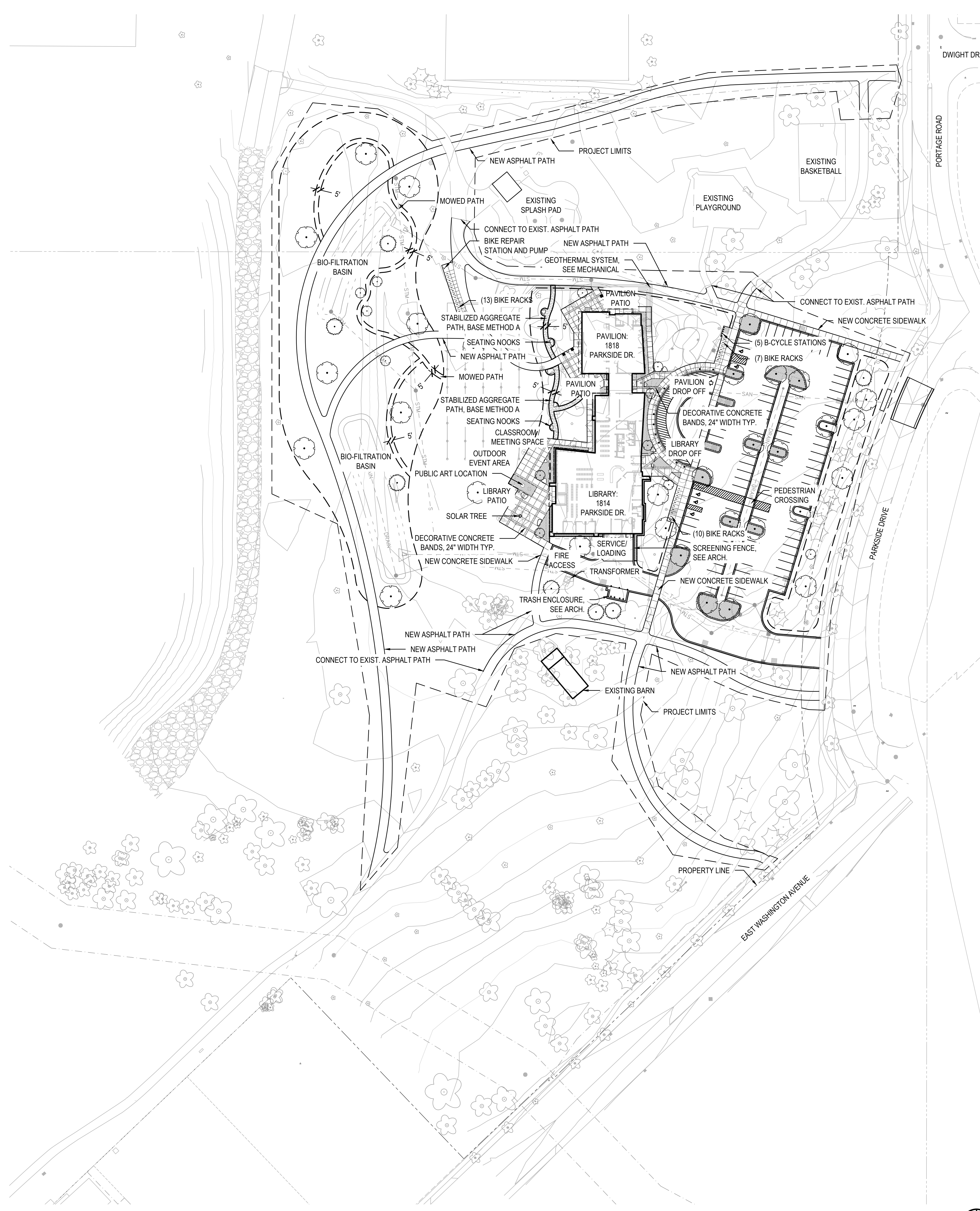
JULY 29, 2024 | CONTRACT #XXXX/MINUS #17085

LIBRARY: 1814 PARKSIDE DRIVE  
MADISON, WI 53704

PAVILION: 1818 PARKSIDE DRIVE  
MADISON, WI 53704







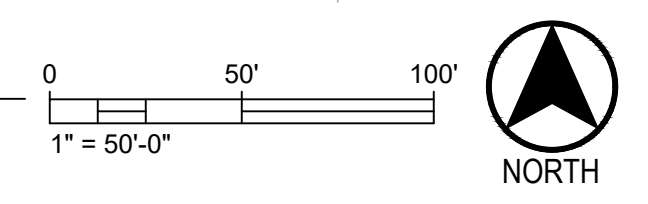
**LEGEND**

- SHREDDED HARDWOOD MULCH
- STONE MULCH
- DECORATIVE CONCRETE
- STABILIZED AGGREGATE PATH, SEE 10/L501
- METAL BED EDGING, SEE 7/L501
- SPADED BED EDGING, SEE 6/L501
- STONE MAINTENANCE EDGE SEE 8/L501
- PROJECT LIMITS
- EXISTING SITE FEATURES
- PROPERTY LINE
- MULCH TREE RING
- FUTURE PUBLIC ART LOCATION
- EXISTING EVERGREEN TREE
- EXISTING DECIDUOUS TREE
- PROPOSED EVERGREEN TREE
- PROPOSED ORNAMENTAL TREE
- PROPOSED SHADE TREE

NOTE: SEE L104 FOR PROPOSED TREE SPECIES

- PLAN NOTES**
1. FIELD VERIFY SURVEY INFORMATION AND SITE CONDITIONS PRIOR TO START OF CONSTRUCTION AND REPORT ANY DISCREPANCIES TO LANDSCAPE ARCHITECT. CONTACT DIGGER'S HOTLINE TO LOCATE ALL PUBLIC AND PRIVATE UTILITIES PRIOR TO THE START OF CONSTRUCTION. ANY DAMAGE CAUSED TO EXISTING UTILITIES, EITHER SHOWN OR NOT, SHALL BE REPAIRED AND PAID FOR AT THE CONTRACTOR'S EXPENSE.
  2. PROTECT ALL BENCHMARKS. PROTECT ALL EXISTING PAVEMENTS, CURBS, UTILITIES, AND OTHER IMPROVEMENTS TO REMAIN FROM CONSTRUCTION ACTIVITIES. INCLUDE ANY RELOCATED BENCHMARKS IN AS-BUILT DRAWINGS.
  3. PROVIDE CONSTRUCTION STAKING FOR ALL HORIZONTAL AND VERTICAL ALIGNMENTS.
  4. ANY DEVIATION FROM CONCRETE JOINTING LAYOUT AS SHOWN ON THE PLANS WILL REQUIRE REVIEW AND APPROVAL BY THE LANDSCAPE ARCHITECT PRIOR TO PROCEEDING WITH MODIFICATIONS.
  5. RESTORE ALL AREAS DISTURBED BY CONSTRUCTION WITHIN OR OUTSIDE OF THE CONSTRUCTION BOUNDARY TO PRE-DISTURBANCE STANDARDS AT NO COST TO THE OWNER OR CITY.
  6. CONTACT CITY OF MADISON PRIOR TO PERFORMING ANY WORK WITHIN THE CITY RIGHT OF WAY TO CONFIRM RESTORATION.
  7. THE RIGHT OF WAY IS THE SOLE JURISDICTION OF THE CITY OF MADISON AND IS SUBJECT TO CHANGE AT ANY TIME PER THE RECOMMENDATION OF TRAFFIC ENGINEERING AND ENGINEERING DIVISIONS. FORWARD ANY CHANGES PROPOSED BY CITY OFFICIALS TO LANDSCAPE ARCHITECT FOR CONSIDERATION AND DIRECTION BEFORE PROCEEDING.
  8. SEE CIVIL DRAWINGS FOR LAYOUT AND DIMENSIONING OF ALL PAVEMENTS.

1 Site Plan  
SCALE: 1"=50'-0"



JLA PROJECT NUMBER: 20-0928



IMAGINATION CENTER  
AT REINDAHL PARK

100% CD Set

DATE OF ISSUANCE: JULY 29, 2024

REVISION SCHEDULE		
Mark	Description	Date

SHEET TITLE  
SITE PLAN

SHEET NUMBER  
L103

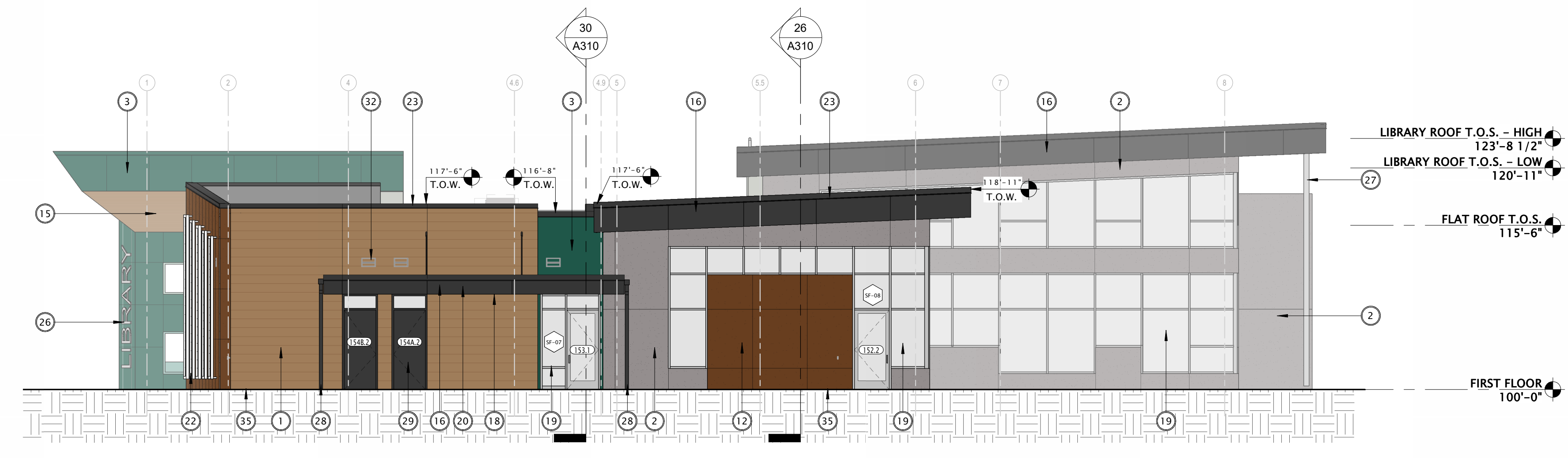




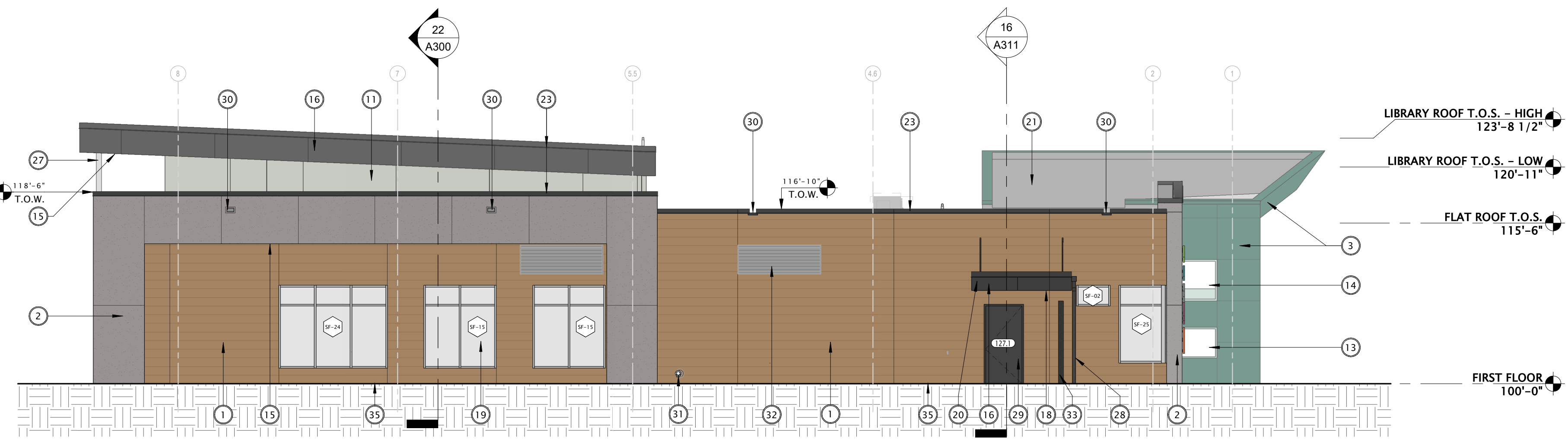


**GENERAL NOTES - EXTERIOR ELEVATIONS**

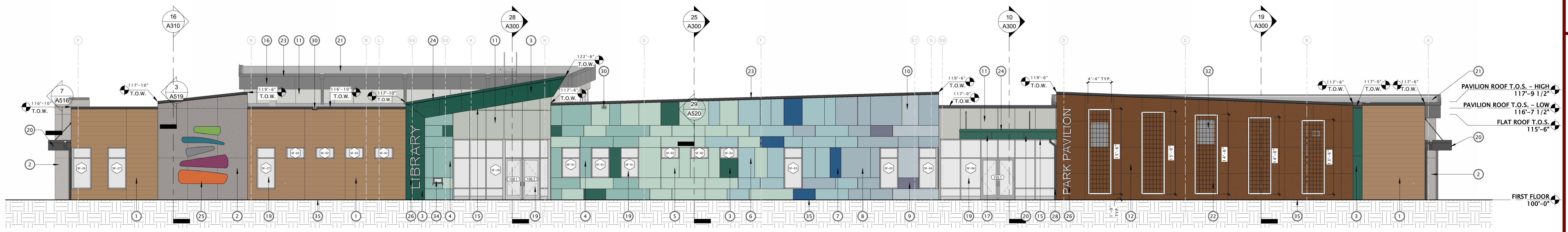
- COORDINATE WITH ARCHITECT THE LOCATION OF ALL MEP-RELATED PENETRATIONS OF THE EXTERIOR ENVELOPE.
- COORDINATE WITH ARCHITECT THE LOCATION OF ALL EXTERIOR MATERIAL PANEL JOINTS, CONTROL JOINTS, AND EXPANSION JOINTS. GC SHALL INCLUDE DIMENSIONED JOINT LOCATIONS AS PART OF SHOP DRAWINGS.
- TRESPA PANELS TO BE BID AND INSTALLED AS SHOWN IN DRAWINGS WITH REGARDS TO SIZE, LOCATION, AND COLOR.



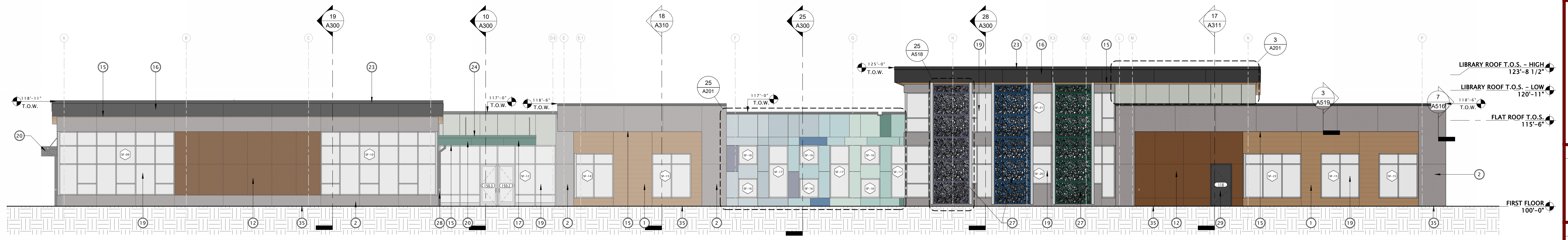
**7 NORTH ELEVATION - OVERALL**  
1/8" = 1'-0"



**13 SOUTH ELEVATION - OVERALL**  
1/8" = 1'-0"



**19 EAST ELEVATION - OVERALL**  
1/8" = 1'-0"



**25 WEST ELEVATION - OVERALL**  
1/8" = 1'-0"

EXTERIOR MATERIALS SCHEDULE						
MARK	DESCRIPTION	MANUFACTURER	TYPE / STYLE	DIMENSIONS	COLOR	NOTES
1	HIGH PRESSURE LAMINATE (HPL) WALL PANELS	TRESPA METEON	WOOD DECOR / PROFILED EDGES	10" x 14'-0"	MILANO TERRA	MATTE FINISH; TS300 CONCEALED FASTENING
2	HIGH PRESSURE LAMINATE (HPL) WALL PANELS	TRESPA METEON	NATURAL DECOR	SEE PLANS	TEMPERED GREY	MATTE FINISH; TS200 CONCEALED FASTENING
3	HIGH PRESSURE LAMINATE (HPL) WALL PANELS	TRESPA METEON	UNI COLOR	SEE PLANS	DARK GREEN	SATIN FINISH; TS200 CONCEALED FASTENING
4	HIGH PRESSURE LAMINATE (HPL) WALL PANELS	TRESPA METEON	UNI COLOR	SEE PLANS	VERDIGRIS	SATIN FINISH; TS200 CONCEALED FASTENING
5	HIGH PRESSURE LAMINATE (HPL) WALL PANELS	TRESPA METEON	UNI COLOR	SEE PLANS	TRANSLUCENT GREEN	SATIN FINISH; TS200 CONCEALED FASTENING
6	HIGH PRESSURE LAMINATE (HPL) WALL PANELS	TRESPA METEON	UNI COLOR	SEE PLANS	AQUAMARINE	SATIN FINISH; TS200 CONCEALED FASTENING
7	HIGH PRESSURE LAMINATE (HPL) WALL PANELS	TRESPA METEON	UNI COLOR	SEE PLANS	COBALT BLUE	SATIN FINISH; TS200 CONCEALED FASTENING
8	HIGH PRESSURE LAMINATE (HPL) WALL PANELS	TRESPA METEON	UNI COLOR	SEE PLANS	OCEAN GREY	SATIN FINISH; TS200 CONCEALED FASTENING
9	HIGH PRESSURE LAMINATE (HPL) WALL PANELS	TRESPA METEON	UNI COLOR	SEE PLANS	LAVENDER BLUE	SATIN FINISH; TS200 CONCEALED FASTENING
10	HIGH PRESSURE LAMINATE (HPL) WALL PANELS	TRESPA METEON	UNI COLOR	SEE PLANS	BLUISH GREY	SATIN FINISH; TS200 CONCEALED FASTENING
11	HIGH PRESSURE LAMINATE (HPL) WALL PANELS	TRESPA METEON	UNI COLOR	SEE PLANS	SILVER GREY	SATIN FINISH; TS200 CONCEALED FASTENING
12	ALUMINUM COMPOSITE MATERIAL (ACM) WALL PANELS	ALUCOBOND PLUS	NATURAL COLLECTION	SEE PLANS	CORTEN	EASYFIX FASTENING
13	HIGH PRESSURE LAMINATE (HPL) WALL PANEL OPENING	TRESPA METEON - WRAPPED	UNI COLOR	SEE PLANS	VERDIGRIS	SATIN FINISH; TS200 CONCEALED FASTENING
14	HIGH PRESSURE LAMINATE (HPL) WALL PANEL OPENING	TRESPA METEON - WRAPPED	UNI COLOR	SEE PLANS	TRANSLUCENT GREEN	SATIN FINISH; TS200 CONCEALED FASTENING
15	HIGH PRESSURE LAMINATE (HPL) SOFFIT PANEL	TRESPA METEON	WOOD DECOR / PROFILED EDGES	10" x 14'-0"	MILANO TERRA	MATTE FINISH; TS300 CONCEALED FASTENING
16	METAL COMPOSITE MATERIAL (MCM) PANELS	CMG (COATED METALS GROUP)	SYSTEM 1000	SEE PLANS	EXTRA DARK BRONZE	
17	METAL COMPOSITE MATERIAL (MCM) PANELS	CMG (COATED METALS GROUP)	SYSTEM 1000	SEE PLANS	DARK GREEN	
18	METAL COMPOSITE MATERIAL (MCM) SOFFIT	CMG (COATED METALS GROUP)	SYSTEM 1000	SEE PLANS	EXTRA DARK BRONZE	
19	ALUMINUM STOREFRONT WINDOW / DOOR SYSTEM	KAWNEER	TRIFAB 451T / 500 WIDE STILE	SEE PLANS	CLEAR ANODIZED	
20	ROOF AWNING - METAL FRAMED WITH TIE-RODS	--	--	SEE PLANS	TIE-RODS = DARK BRONZE; FASCIA COLORS VARY	
21	EPDM ROOF	FIRESTONE	RUBBERGARD	SEE PLANS	BLACK	
22	METAL & CABLE RAIL TRELLIS PANELS (OR EQUAL)	CITYSCAPES, NATURESCREEN	ALUMINUM FRAMED WITH WIRE MESH	SEE PLANS	WHITE	
23	METAL WALL COPING / GRAVEL STOP	PAC-CLAD (OR EQUAL)	PREFINISHED ALUMINUM	SEE PLANS	DARK BRONZE	
24	METAL WALL COPING / GRAVEL STOP	PAC-CLAD (OR EQUAL)	PREFINISHED ALUMINUM	SEE PLANS	DARK GREEN	
25	BUILDING LOGO	SEE EXTERIOR ELEVATIONS - SIGNAGE	--	SEE PLANS	TO MATCH MADISON PUBLIC LIBRARY COLORS	
26	DIMENSIONAL BUILDING LETTERING	SEE EXTERIOR ELEVATIONS - SIGNAGE	--	SEE PLANS	TBD	
27	EXTERIOR ALUMINUM SHADING DEVICE	REVAMP PANELS (OR EQUAL)	NEST PATTERN (OR EQUAL)	SEE PLANS	POWDER-COATED TO MATCH TRESPA LAVENDER BLUE, COBALT BLUE, DARK GREEN	
28	ALUMINUM DOWNSPOUT & COLLECTION BOX	FABRICATED	INDUSTRIAL - CLOSED PROFILE	SEE PLANS	DARK BRONZE	
29	STEEL ACCESS DOOR	THERMA-TRU (OR EQUAL)	INSULATED	SEE PLANS	DARK BRONZE	
30	THRU-WALL SCUPPER / SCUPPER NOTCH	PAC-CLAD (OR EQUAL)	PREFINISHED ALUMINUM	SEE PLANS	TO MATCH ADJACENT WALL MATERIAL	
31	LAMBS TONGUE DRAIN	ZURN (OR EQUAL)	--	SEE PLANS	NICKEL BRONZE	
32	MECHANICAL LOUVER	--	--	SEE PLANS	TO MATCH ADJACENT WALL MATERIAL	
33	FENCE	CITYSCAPES, COVRT	ALUMINUM FRAMED WITH INFILL PANELS	SEE PLANS	TBD	
34	THRU-WALL BOOK DROP	TBD	--	SEE PLANS	TBD	
35	FOUNDATION COVER	GLASTEEL	GLASLINER FRP FOUNDATION LINER	SEE PLANS	BLACK	



**JLA ARCHITECTS**  
MADISON | MILWAUKEE | DENVER  
JLA-AP.COM

JLA PROJECT NUMBER: 20-0928



MADISON PUBLIC LIBRARY

play MADISON PARKS

IMAGINATION CENTER AT REINDAHL PARK

100% CD SET

**PROGRESS DOCUMENTS**

These documents reflect progress and intent and may be subject to change, including additional detail. These are not final construction documents and should not be used for final bidding or construction-related purposes.

DATE OF ISSUANCE: JULY 29, 2024

**REVISION SCHEDULE**

Mark	Description	Date

SHEET TITLE: EXTERIOR ELEVATIONS

SHEET NUMBER: A200

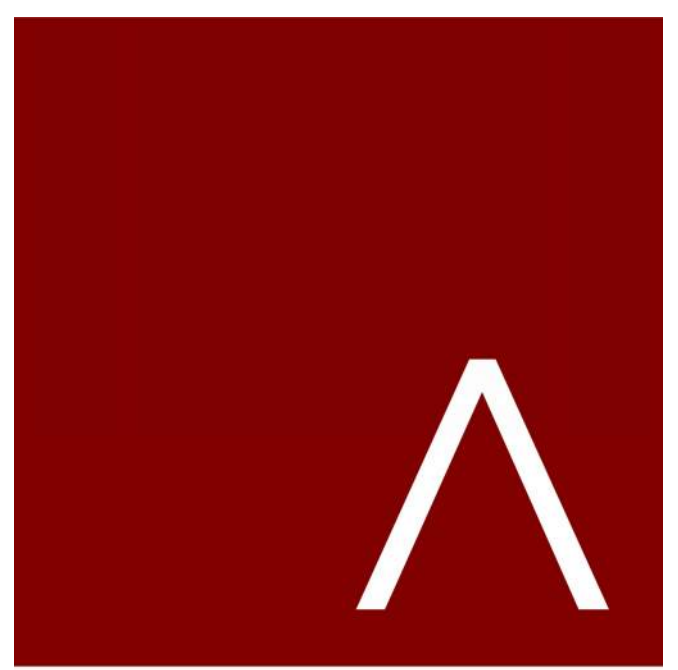




PERSPECTIVE - PAVILION SIDE ENTRY



PERSPECTIVE - LIBRARY FROM TURNAROUND



**JLA**  
ARCHITECTS  
MADISON | MILWAUKEE | DENVER  
JLA-AP.COM

JLA PROJECT NUMBER: 20-0928



*play*  
**MADISON  
PARKS**

IMAGINATION CENTER  
AT REINDAHL PARK

ISSUED FOR PLAN REVIEW

DATE OF ISSUANCE: JUNE 7, 2024

REVISION SCHEDULE		
Mark	Description	Date

SHEET TITLE

**BUILDING  
RENDERINGS-  
EXTERIOR**

SHEET NUMBER

**A223**

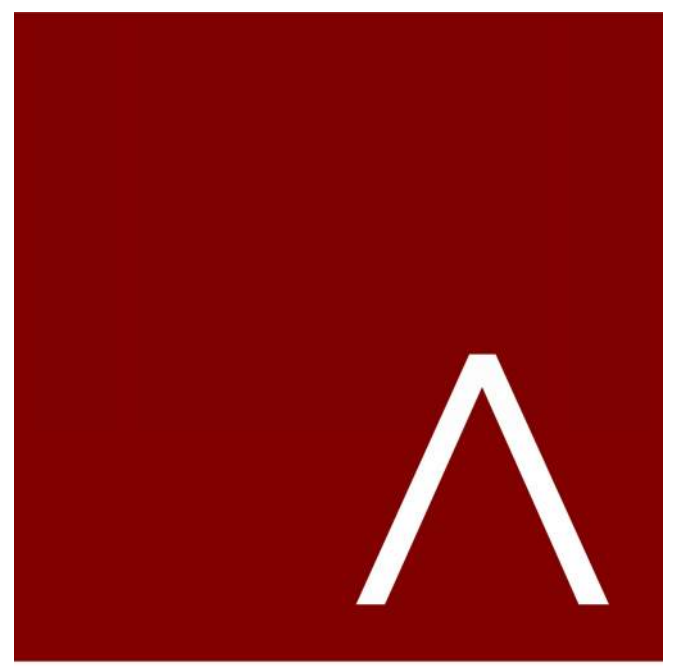




INTERIOR PERSPECTIVE - FRONT DESK TO HALLWAY



INTERIOR PERSPECTIVE - FRONT DESK TO STACKS



**JLA**  
ARCHITECTS  
MADISON | MILWAUKEE | DENVER  
JLA-AP.COM

JLA PROJECT NUMBER: 20-0928



MADISON  
PUBLIC  
LIBRARY

play  
MADISON  
PARKS

IMAGINATION CENTER  
AT REINDAHL PARK

ISSUED FOR PLAN REVIEW

DATE OF ISSUANCE JUNE 7, 2024

REVISION SCHEDULE		
Mark	Description	Date

SHEET TITLE

BUILDING  
RENDERINGS-  
INTERIOR

SHEET NUMBER

A225