



# Babette Wainwright Proposal

2026 Sculpture for Newville (Kenneth) Park

# About Babette Wainwright

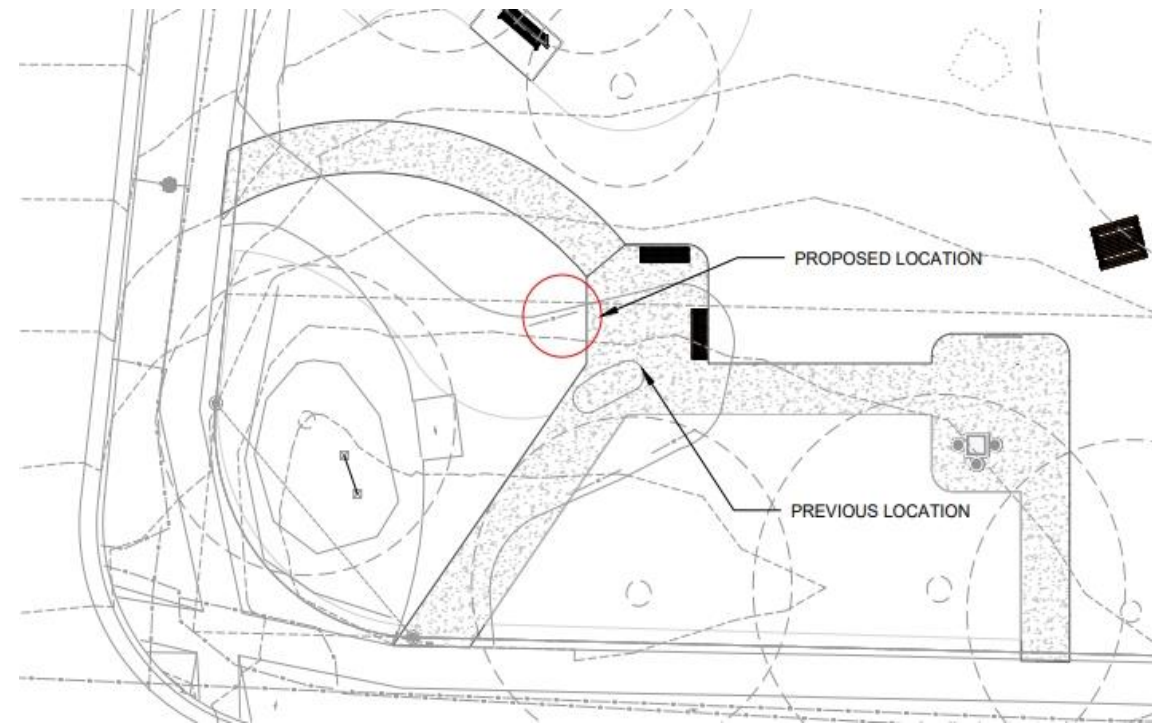
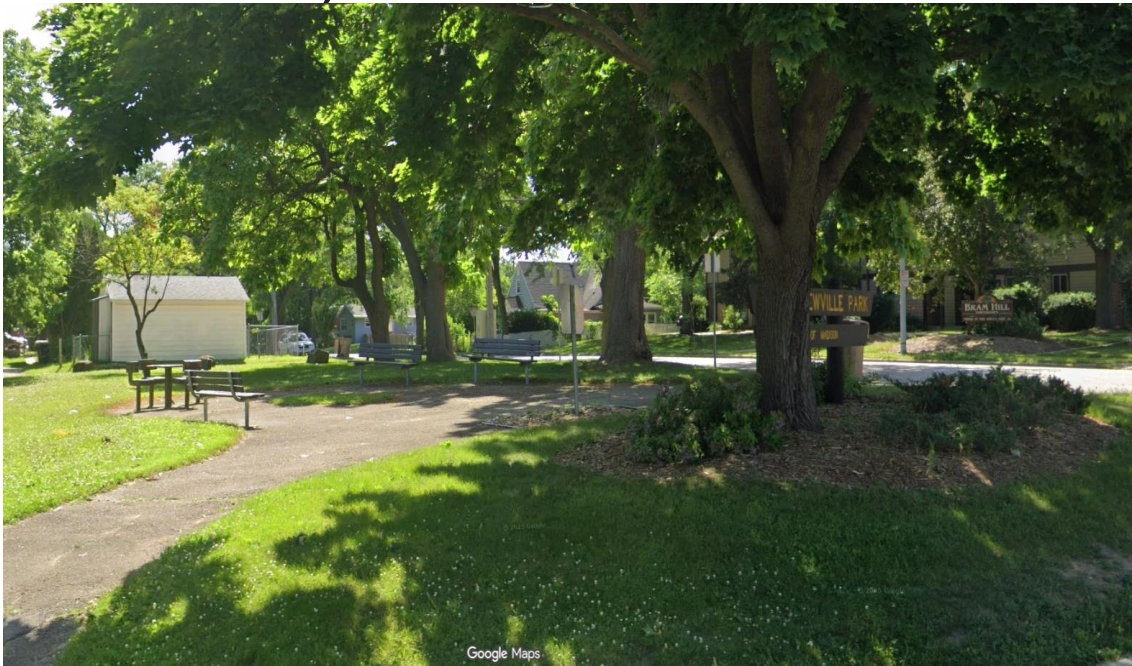


Image of Babette Wainwright by Beth McConnell from Our Lives Magazine, 2013

- Long time resident of Madison, WI.
- Sculptor and painter born in Port-au-Prince, Haiti.
- MFA in ceramics from UW-Madison.
- Works focus on Black women and African ancestry.
- Inspired by works of pre-Colombian Haiti people.
- Awarded various grants and Wisconsin Women Artist Forward Fund prize in 2023.

# Proposed Location

- Newville (Kenneth) Park
- Behind sign in grass bed.
- 1867 Beld St
- 43.04606, -89.39277



# Proposed Designs

- Title: Lullaby
- Bronze
- 6' x 3' (1' concrete plinth)
- Proposed alteration: Fill in hair to make it easy to cast in bronze in one piece, or commission a different but similar model with that is easier to cast and does not pose a climbing risk.



# Proposed Timeline

- Summer 2026: Siting approvals, begin community engagement
- September 9, 2026 MAC Meeting: Artist Talk - 10 minutes plus Q & A
- September 2026 – September 2027: Continue community outreach, complete fundraising, fabrication at foundary
- Spring 2028: Installation
- Juneteenth 2028: Dedication

# Budget

- Design Fee \$2,500
  - Licensing Fee \$5,000
  - Fabrication in Bronze \$70,000
  - Foundation in concrete \$15,000
  - Shipping: \$2,500
  - Installation \$5,000
  - Plaque \$500
  - Outreach, documentation, celebration \$2,000
  - Contingency \$10,000
- TOTAL ESTIMATE \$112,500.00**

# Recommendation

Seeking approval for licensing, fabrication and installation of the design by Babette Wainright with the proposed alteration at Newville Park, or empower staff to commission a very similar design, if needed, to mitigate casting issues or climbing risks.