



OAKWOOD VILLAGE

UNIVERSITY WOODS

MADISON, WISCONSIN

INDEX

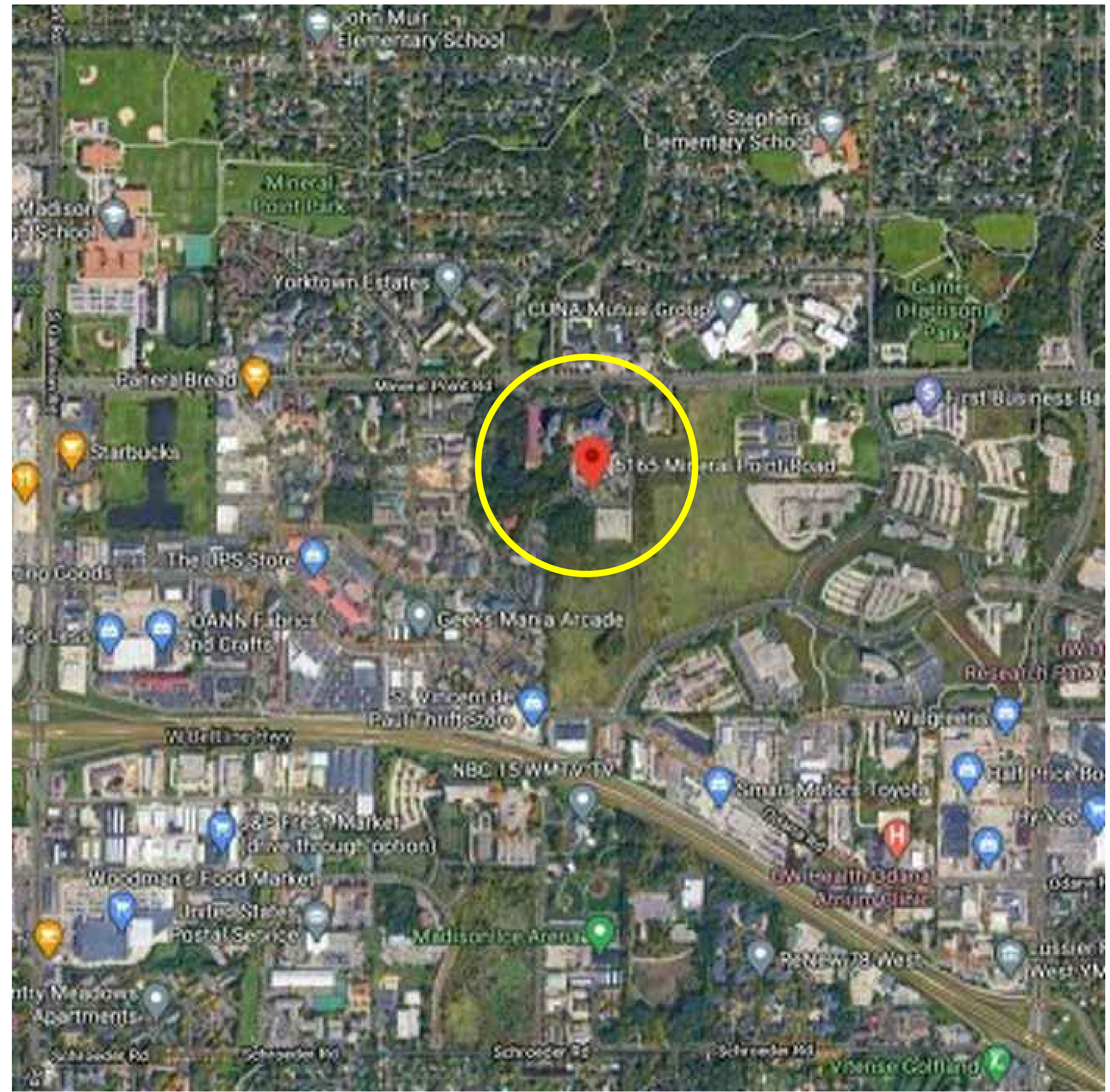
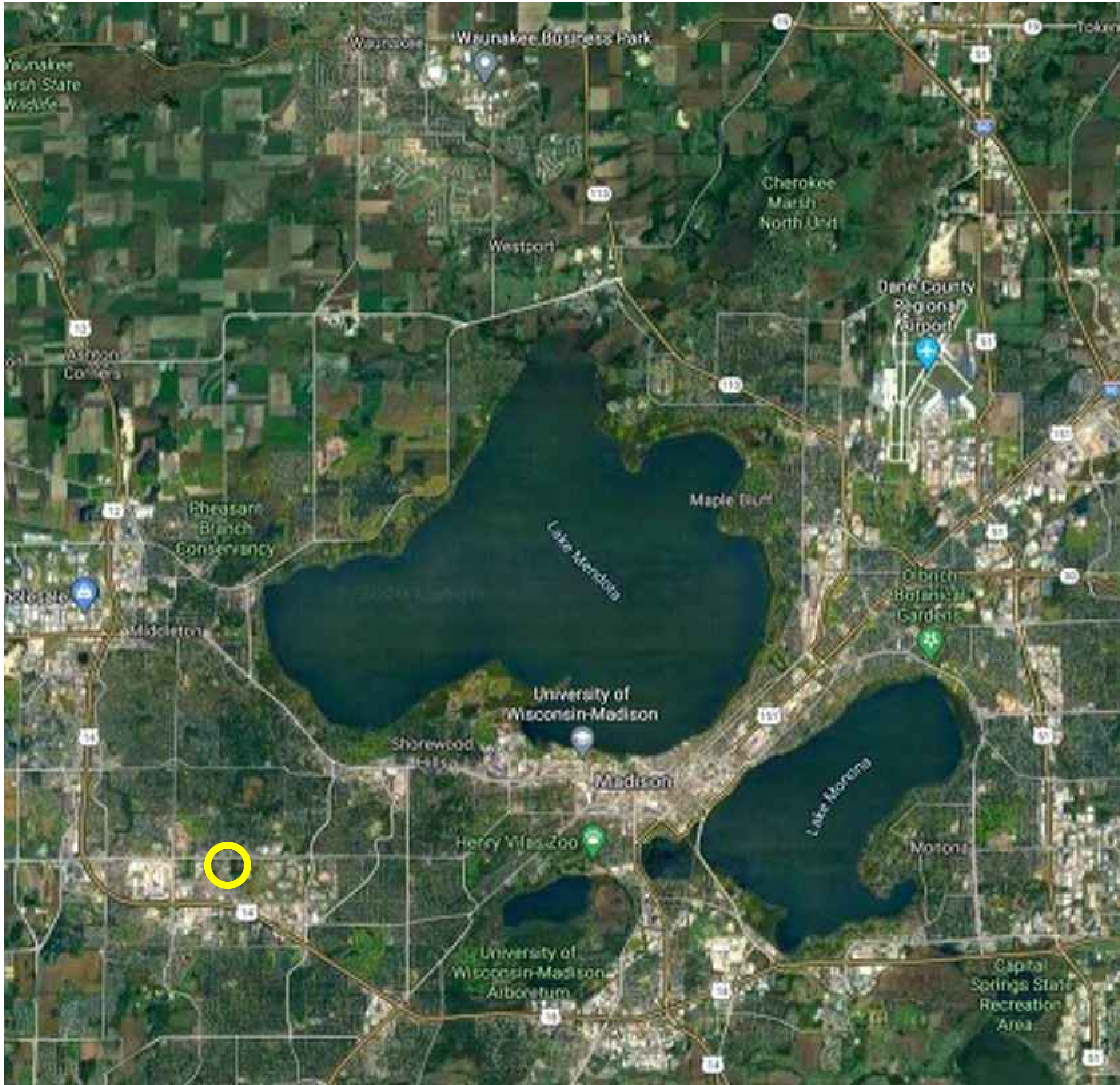
AP001	LOCATION MAP & CONTEXT	AP100	LOWER LEVEL FLOOR PLAN
AP002	AERIAL	AP101	1ST FLOOR PLAN
AP012	FUTURE BUILDING DEMOLITION PLAN	AP102	2ND FLOOR PLAN
		AP103	3RD FLOOR PLAN
C1310	SITE STORMWATER PLAN	AP200	ELEVATIONS
		AP201	ELEVATIONS
AP403	AERIALS	AP400	LOOKING SOUTH FROM CONNECTOR ROOF
		AP401	LOOKING SOUTHWEST
C0160	EXISTING TREE SURVEY PLAN	AP402	LOWER DROP OFF LOOKING SOUTHEAST





UDC INFORMATIONAL SUBMITTAL

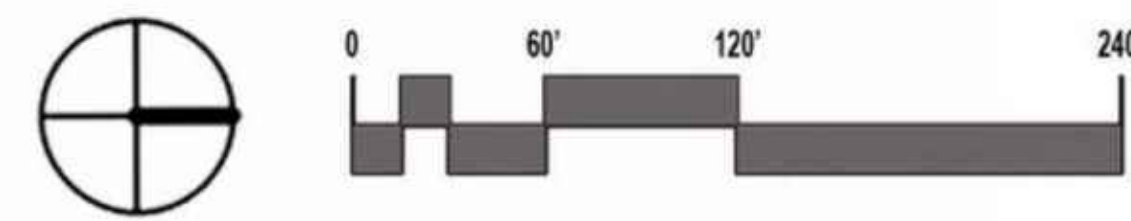
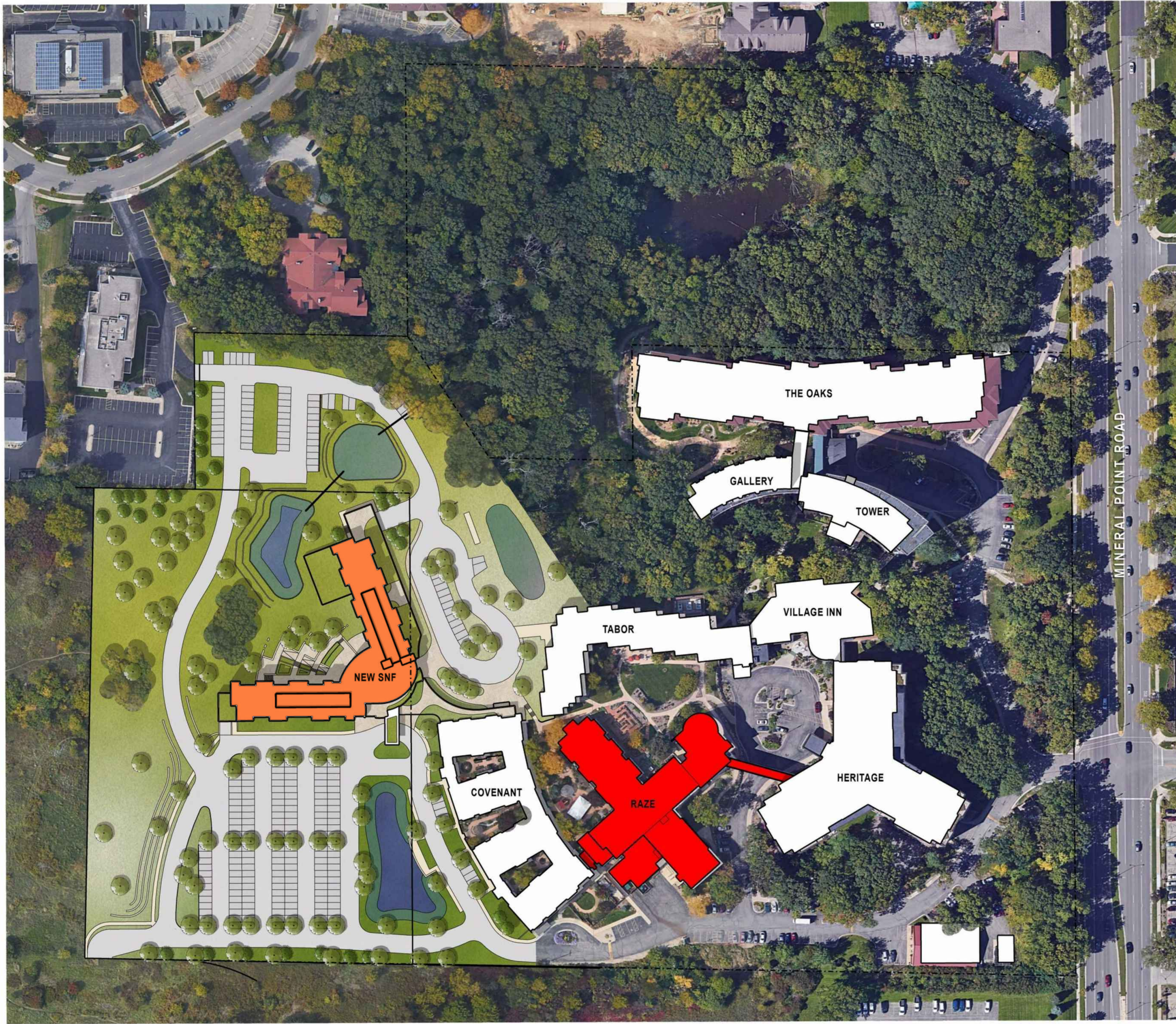
01/08/21

PROJECT NUMBER: 120290-01





-  CAMPUS BOUNDARY
-  NEW BUILDING LOCATION ON CAMPUS





milwaukee 333 East Chicago Street
Milwaukee, Wisconsin 53202
414.271.5350

madison 309 West Johnson Street, Suite 202
Madison, Wisconsin 53703
608.442.2590

denver 1899 Wynkoop Street, Suite 300
Denver, Colorado 80202
303.595.4500

PROJECT INFORMATION

**OAKWOOD VILLAGE
UNIVERSITY WOODS
- SKILLED NURSING
FACILITY**

6165 Mineral Point Rd,
Madison, WI 53705

ISSUANCE AND REVISIONS

DATE	DESCRIPTION

KEY PLAN

SHEET INFORMATION

**PROGRESS DOCUMENTS
NOT FOR CONSTRUCTION**

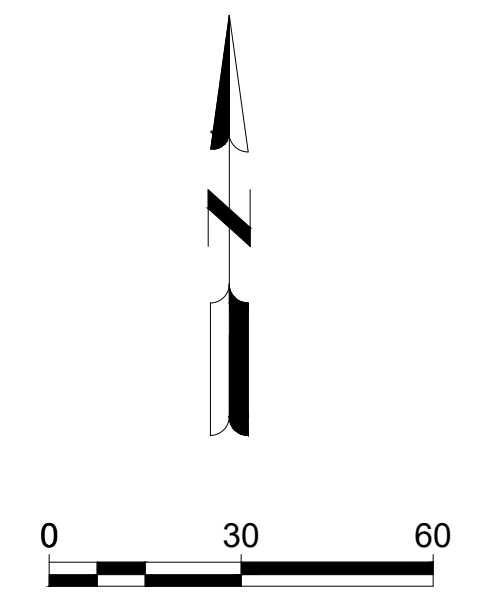
These documents reflect progress and intent and may be subject to change, including additional detail. These are not final construction documents and shall not be used for final bidding or construction-related purposes.

PROJECT MANAGER MO
PROJECT NUMBER 120290-01

**SITE STORMWATER
PLAN**

C1310

© Epstein Uhen Architects, Inc.







milwaukee 333 East Chicago Street
Milwaukee, Wisconsin 53202
414.271.5350

madison 309 West Johnson Street, Suite 202
Madison, Wisconsin 53703
608.442.2590

denver 1899 Wynkoop Street, Suite 300
Denver, Colorado 80202
303.595.4500

PROJECT INFORMATION

**OAKWOOD VILLAGE
UNIVERSITY WOODS
- SKILLED NURSING
FACILITY**

6165 Mineral Point Rd,
Madison, WI 53705

ISSUANCE AND REVISIONS

DATE	DESCRIPTION

KEY PLAN

SHEET INFORMATION

**PROGRESS DOCUMENTS
NOT FOR CONSTRUCTION**

These documents reflect progress and intent and may be subject to change, including additional detail. These are not final construction documents and shall not be used for final bidding or construction-related purposes.

PROJECT MANAGER MO

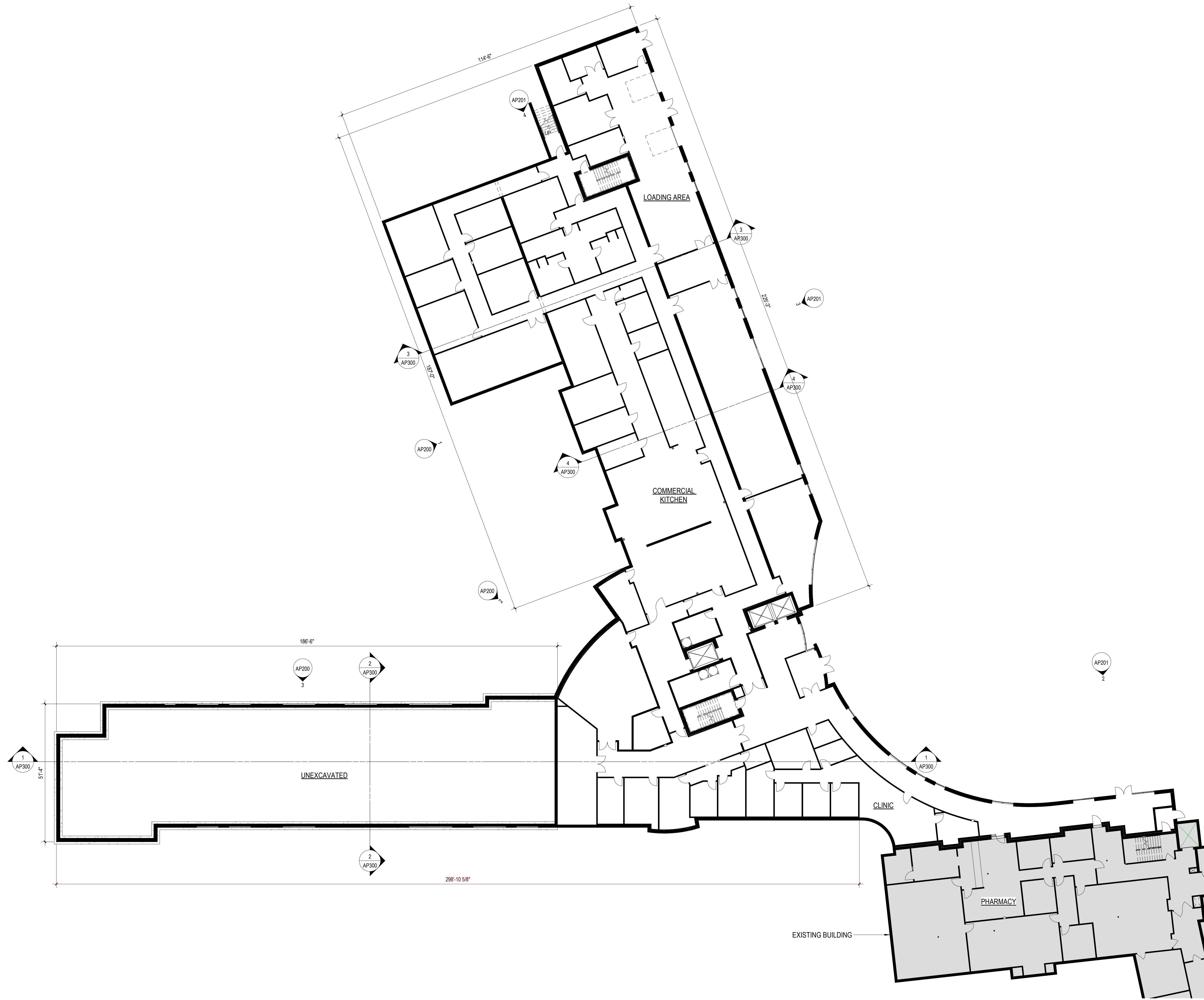
PROJECT NUMBER 120290-01

EXISTING TREE
SURVEY PLAN

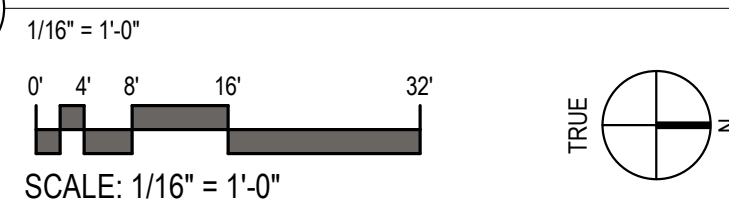
C0160

© Epstein Uhen Architects, Inc.

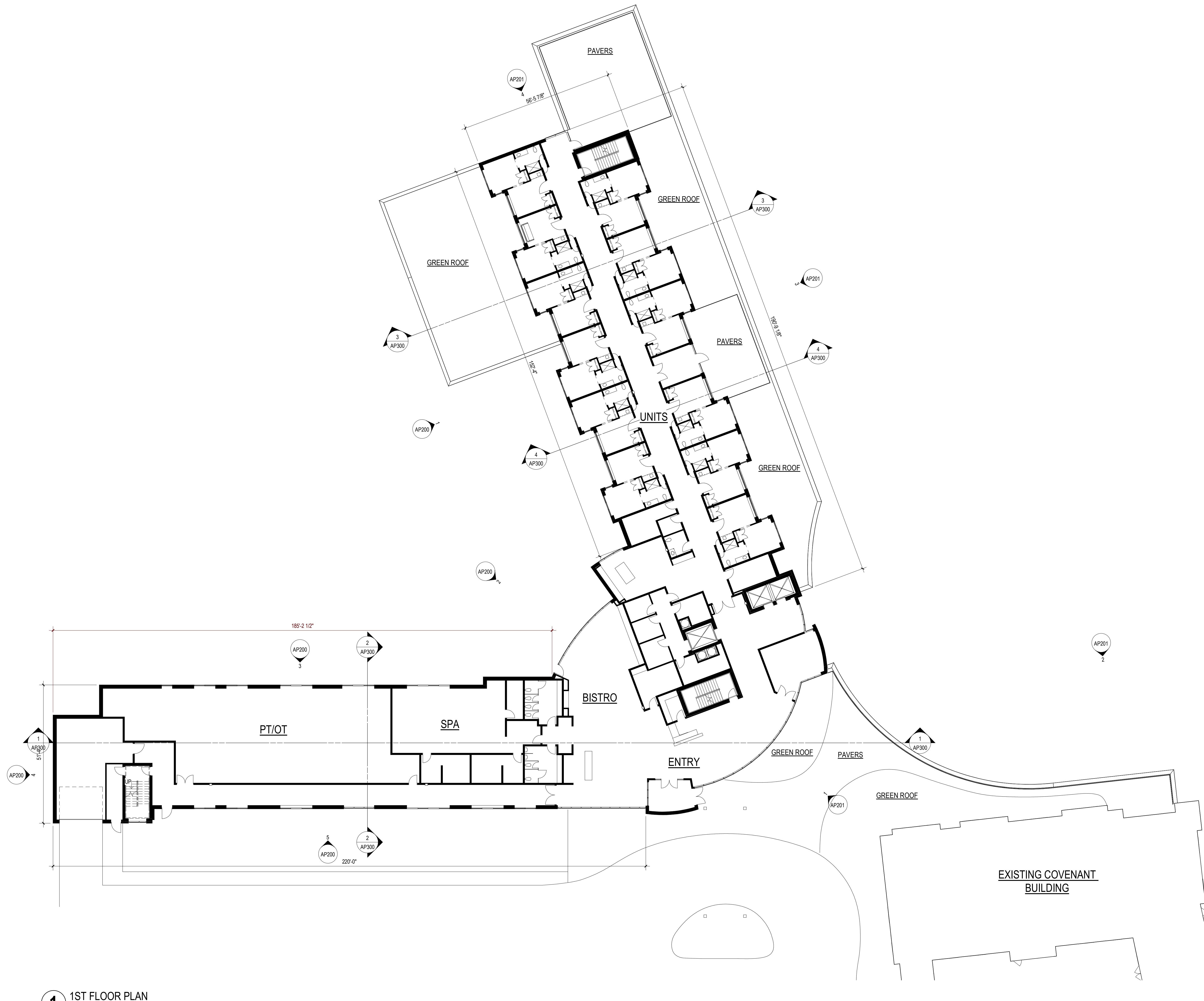




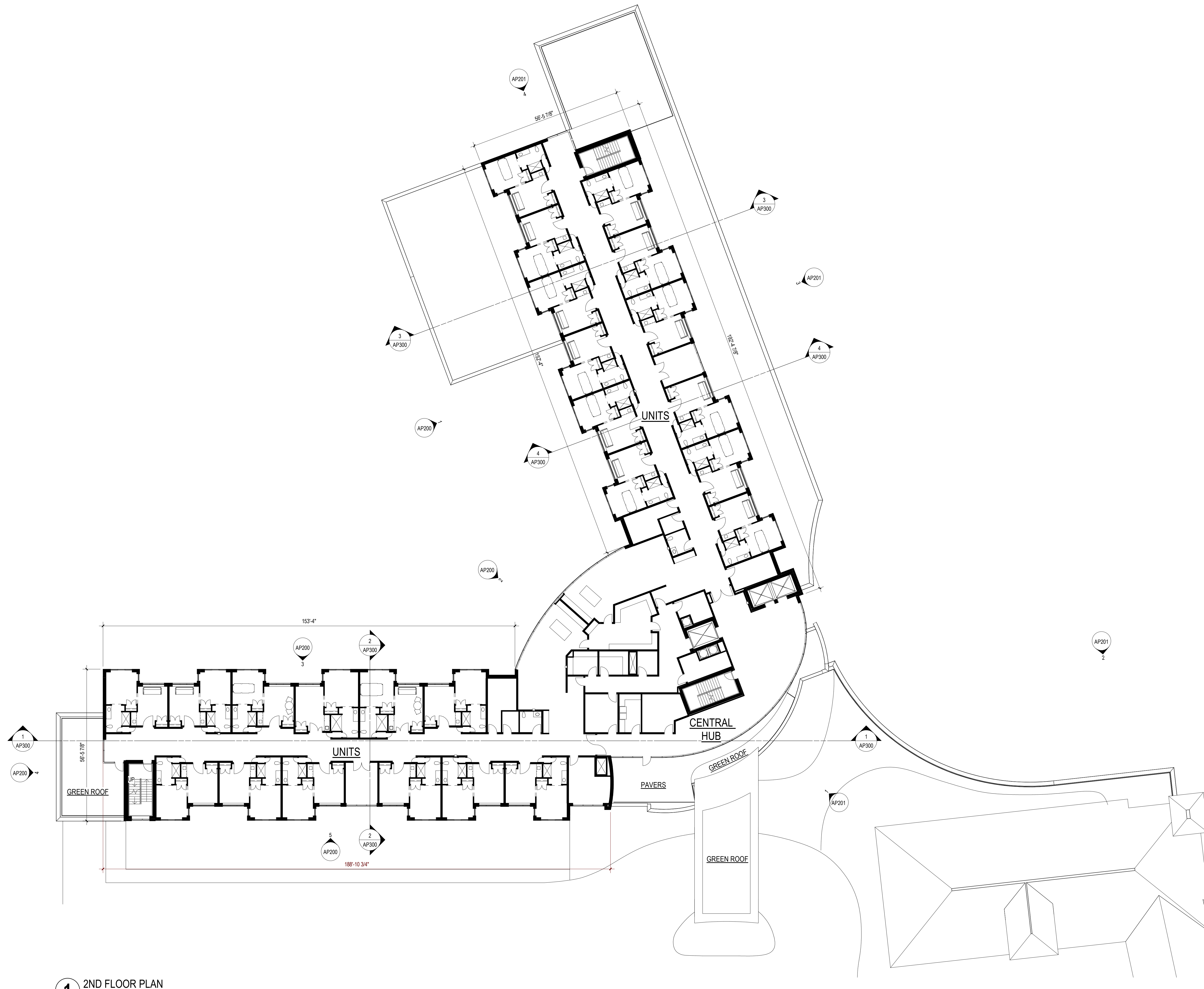
1 LOWER LEVEL FLOOR PLAN



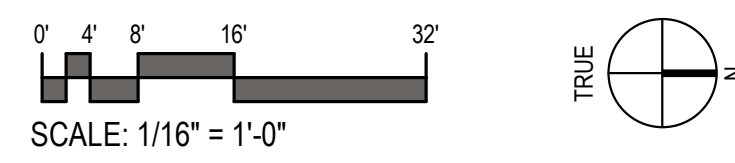
LOWER LEVEL FLOOR PLAN

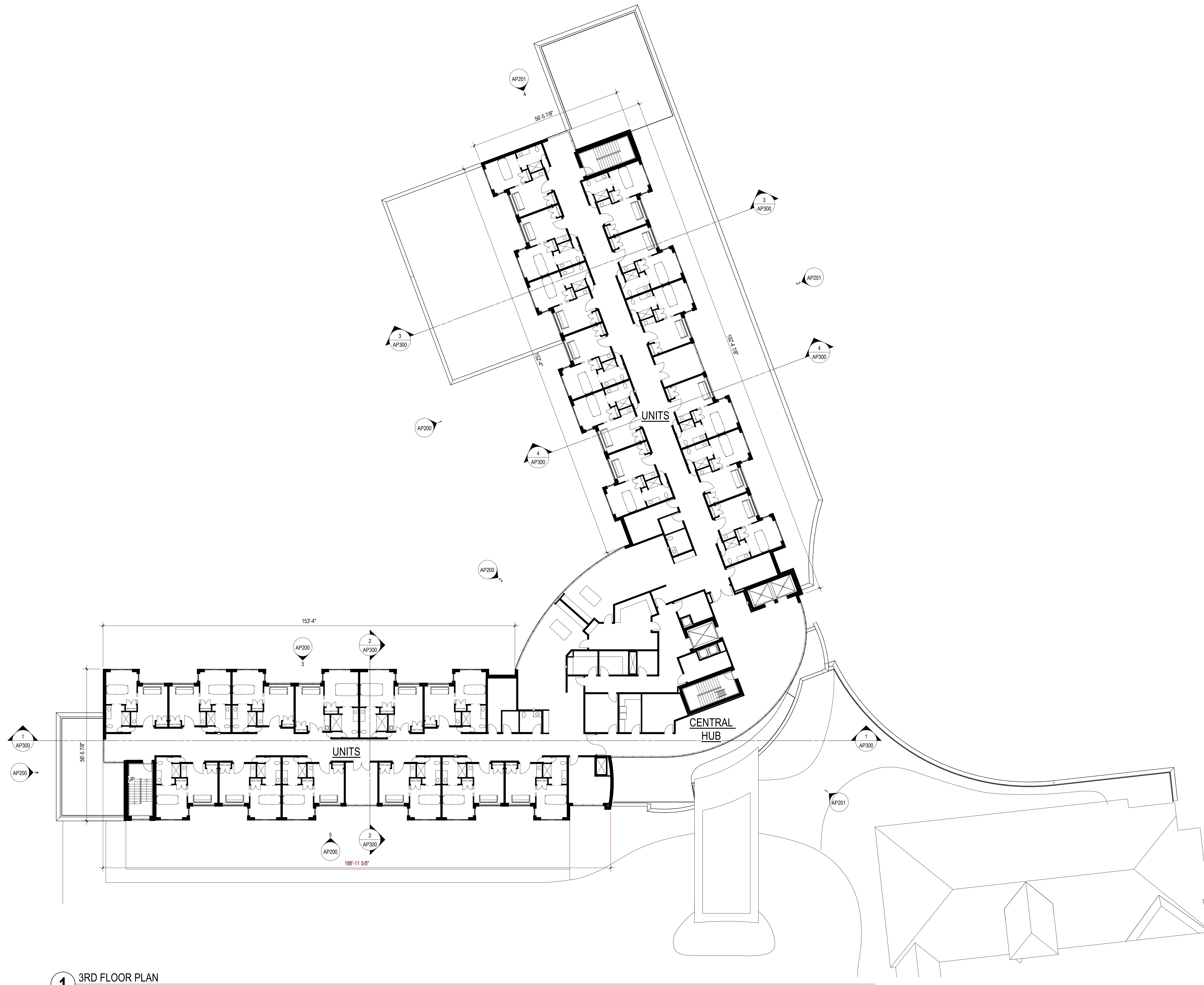


1 1ST FLOOR PLAN
 1/16" = 1'-0"
 SCALE: 1/16" = 1'-0"
 TRUE

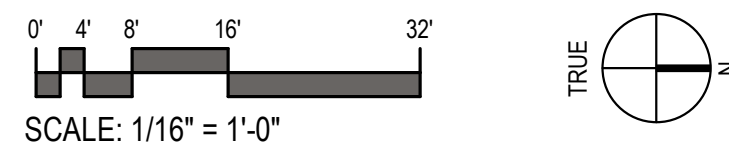


1 2ND FLOOR PLAN
1/16" = 1'-0"





1 3RD FLOOR PLAN
1/16" = 1'-0"

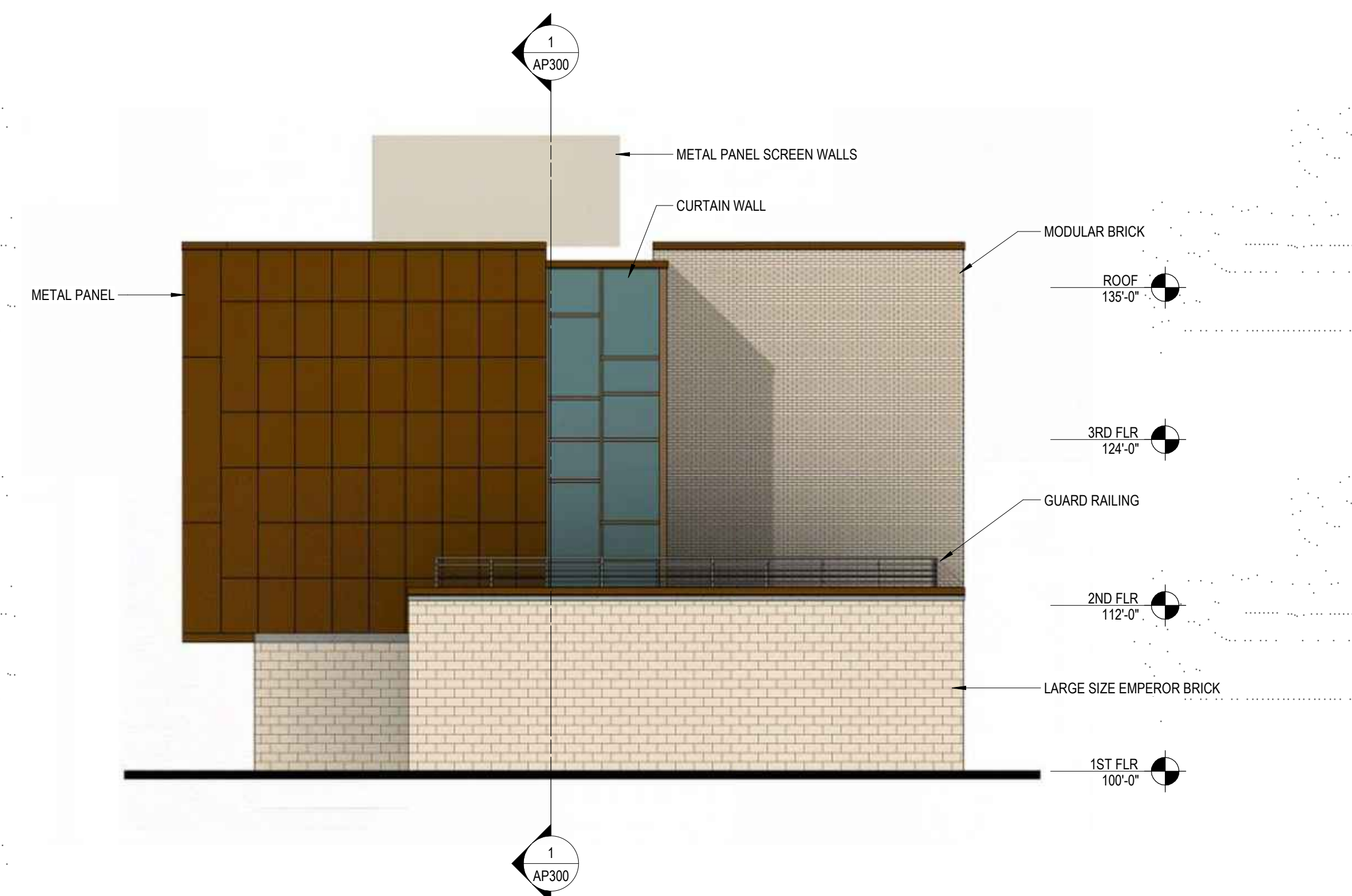




5 SOUTH WING EAST ELEVATION
1/8" = 1'-0"



3 SOUTH WING WEST ELEVATION
1/8" = 1'-0"



4 SOUTH WING SOUTH ELEVATION
1/8" = 1'-0"



1 NORTH WING SOUTH ELEVATION
1/8" = 1'-0"



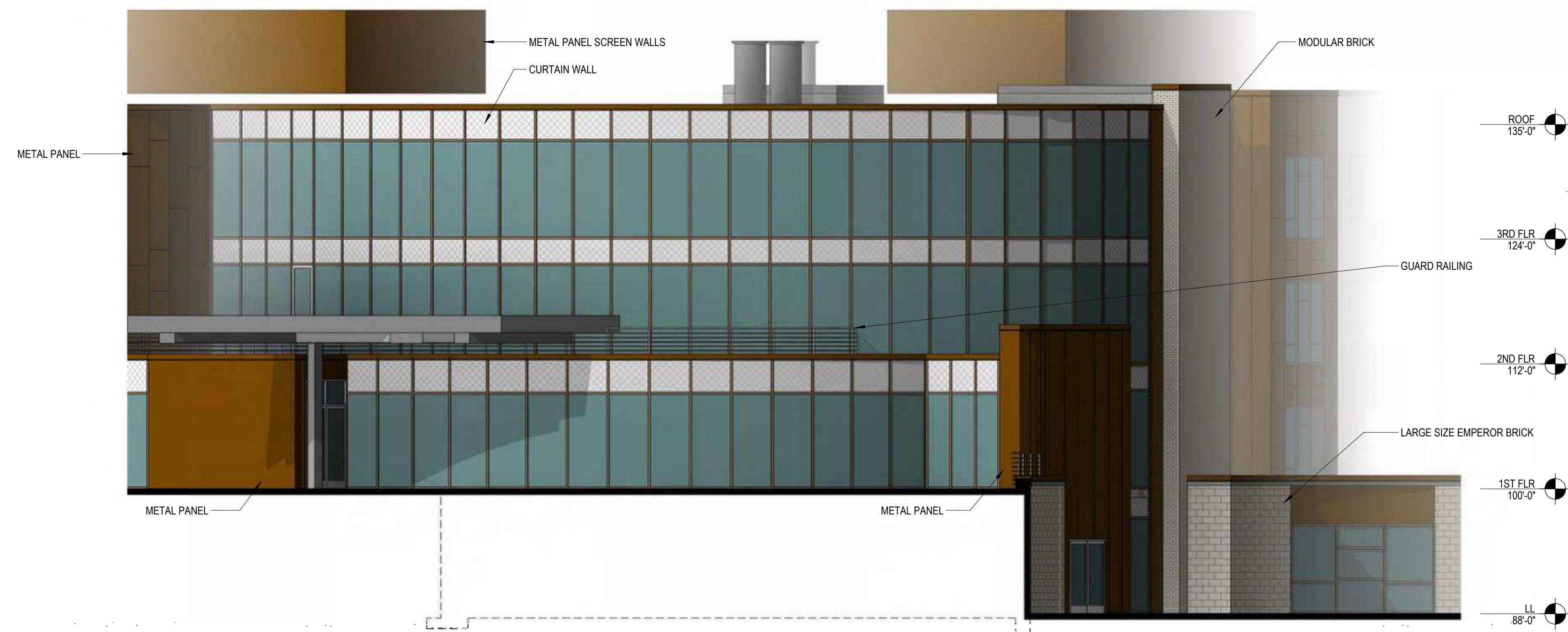
2 CENTRAL HUB - SW ELEVATION
1/8" = 1'-0"



4 NORTH WING WEST ELEVATION
1/8" = 1'-0"



3 NORTH WING NORTH ELEVATION
1/8" = 1'-0"



1 CENTRAL HUB - NE ELEVATION
1/8" = 1'-0"



2 LOWER LEVEL CONNECTOR
1/8" = 1'-0"

ELEVATIONS



LOOKING SOUTH FROM CONNECTOR ROOF



LOOKING SOUTHWEST



LOWER DROP OFF LOOKING SOUTHEAST