

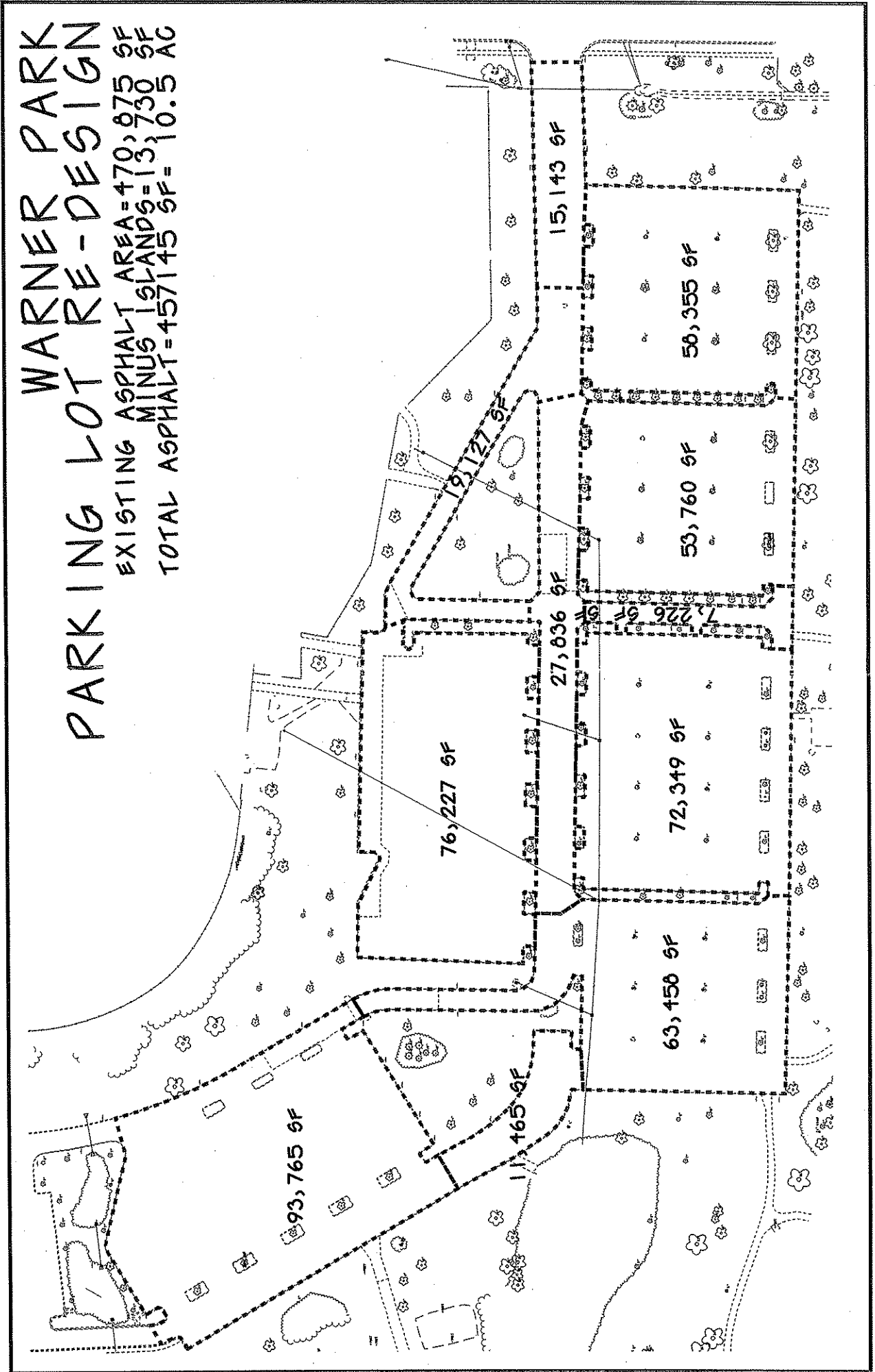
Project: Warner Park Parking Lot Redesign/Reconstruction

Parks Division Design Criteria:

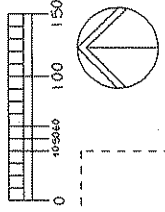
1. The new design should consider and incorporate the parking lot design guidelines/features in the approved Northside Neighborhood Plan where applicable
2. The new design will efficiently and economically break down into multiple phases to lessen the impact on the capital budget
3. The new design will meet all City of Madison parking lot requirements
4. Every attempt should be made to keep the same asphalt footprint yet minimize loss of parking stalls or if possible, increase the number of parking stalls.
5. The new design will attempt to lessen the impact of storm water runoff on the existing wetlands in Warner Park
6. The new design will keep people from using the park as a cut through from Sherman Ave. to Northport Dr.
7. The new design will incorporate better pedestrian access from each parking bay to facilities that are serviced by the parking lot
8. The new design will incorporate pedestrian/bike access through and/or adjacent to the parking lot and connecting to the existing pedestrian/bike path systems throughout the park.
9. The new design will attempt to lessen the large parking lot “feel” by breaking up the large lot into smaller lots and incorporating residential street design standards to the entrance road.

WARNER PARK PARKING LOT RE-DESIGN

EXISTING ASPHALT AREA = 470,875 SF
MINUS ISLANDS = 13,730 SF
TOTAL ASPHALT = 457,145 SF = 10.5 AC



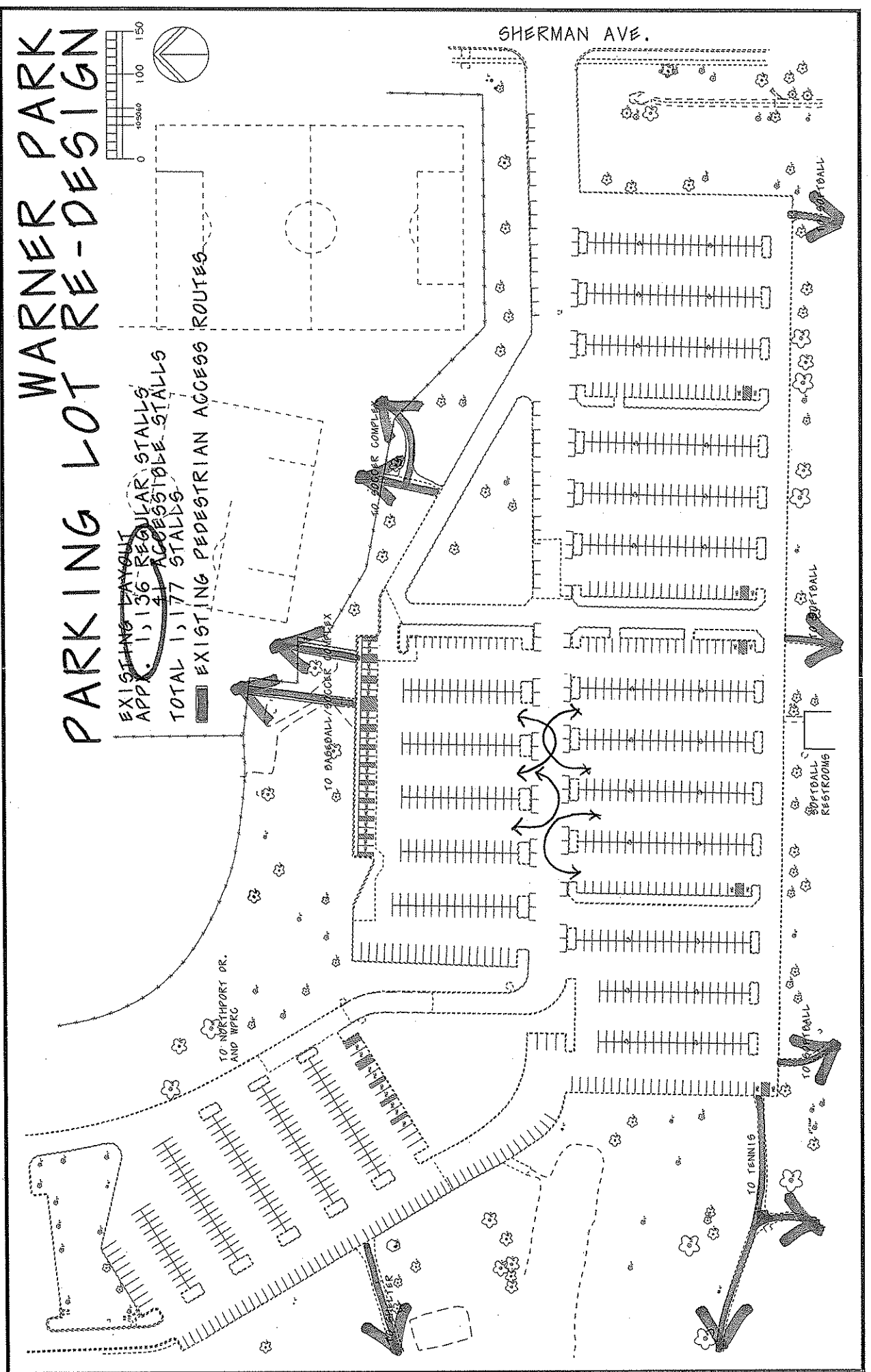
PARKING LOT RE-DESIGN WARNER PARK

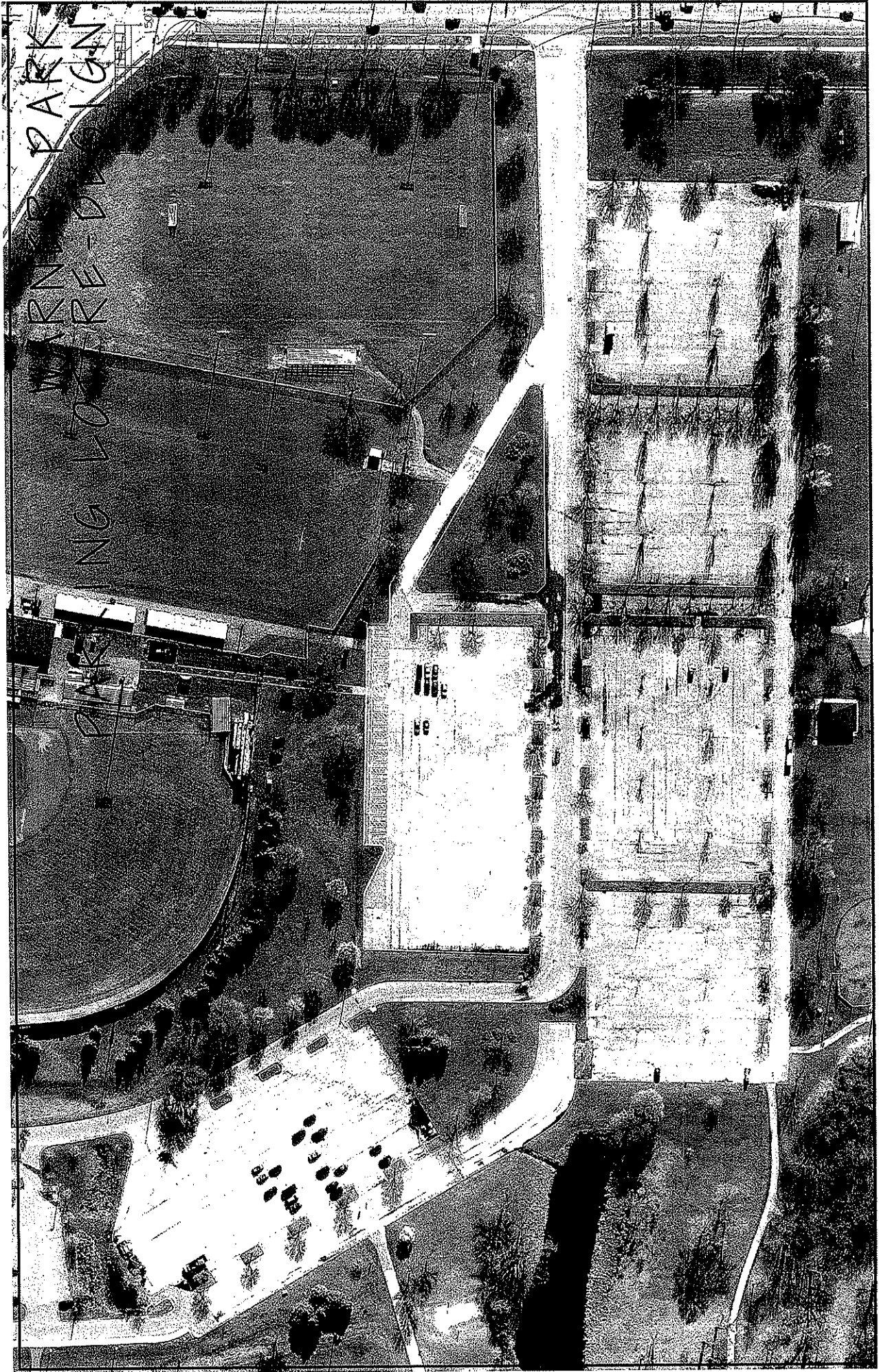


EXISTING DAYOUT
 APPX. 1,136 REGULAR STALLS
 41 ACCESSIBLE STALLS
 TOTAL 1,177 STALLS

EXISTING PEDESTRIAN ACCESS ROUTES

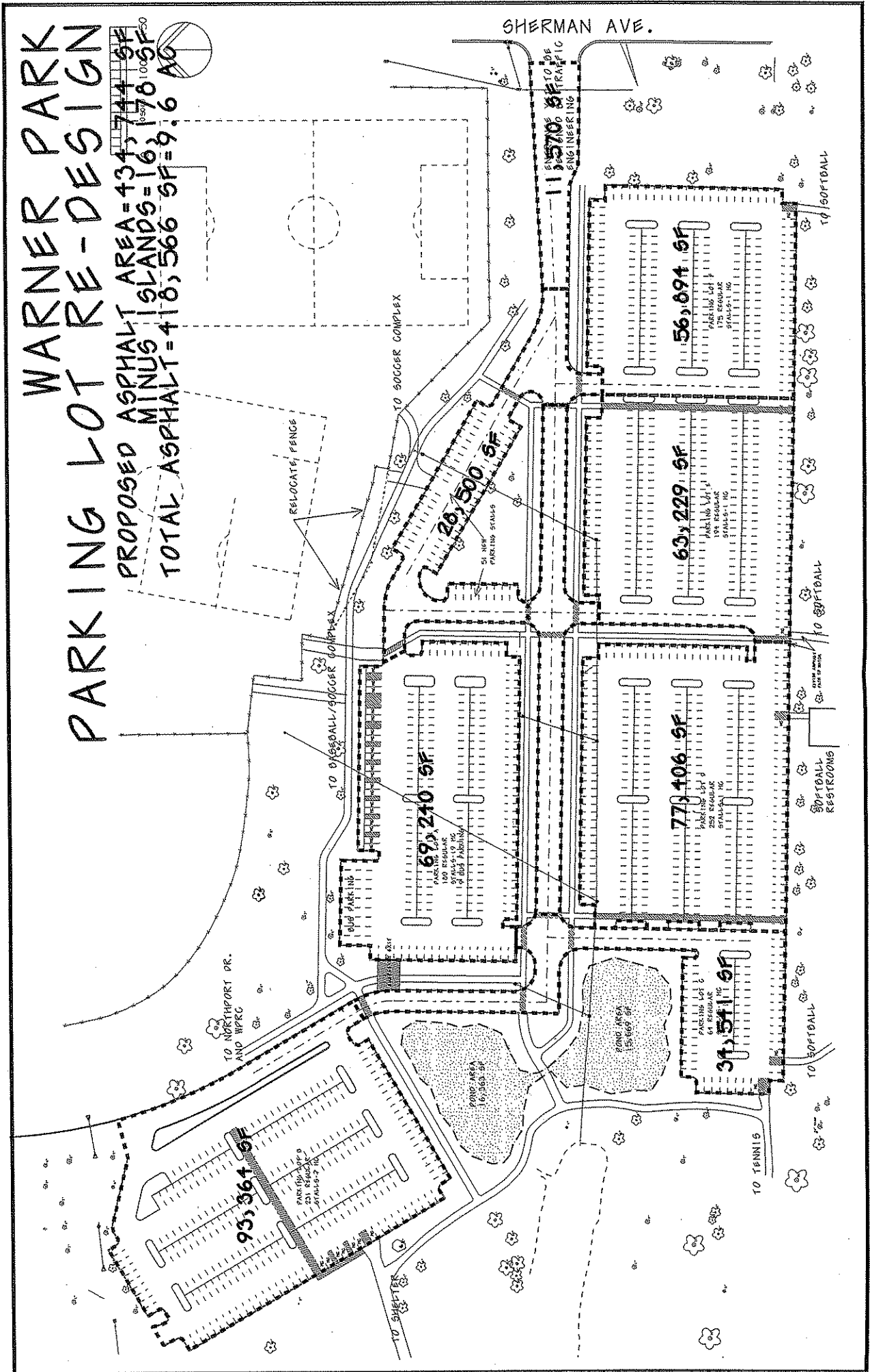
SHERMAN AVE.



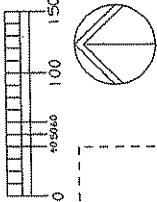


WARNER PARK PARKING LOT RE-DESIGN

PROPOSED ASPHALT AREA = 434,744 SF
 MINUS ISLANDS = 16,178 SF
 TOTAL ASPHALT = 418,566 SF = 9.6 AC

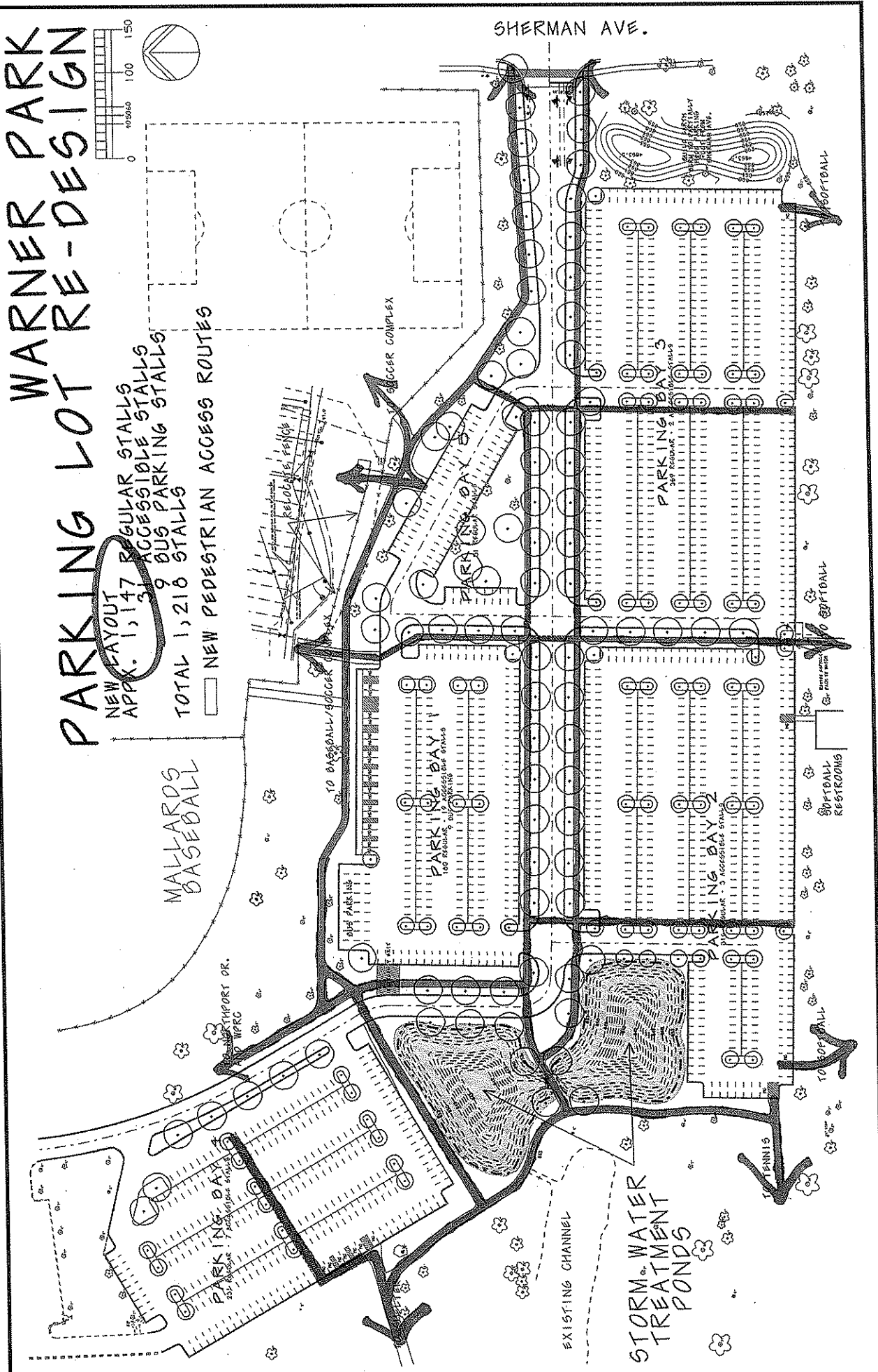


WARNER PARK PARKING LOT RE-DESIGN

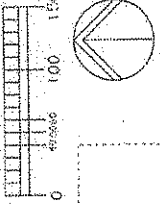


NEW LAYOUT
APPRX. 1,147
REGULAR STALLS
ACCESSIBLE STALLS
9 BUS PARKING STALLS
TOTAL 1,210 STALLS

NEW PEDESTRIAN ACCESS ROUTES



WARNER PARK PARKING LOT RE-DESIGN



NEW LAYOUT
 APPX. 1,147
 31 ACCESSIBLE STALLS
 9 BUS PARKING STALLS
 TOTAL 1,216 STALLS

NEW PEDESTRIAN ACCESS ROUTES

