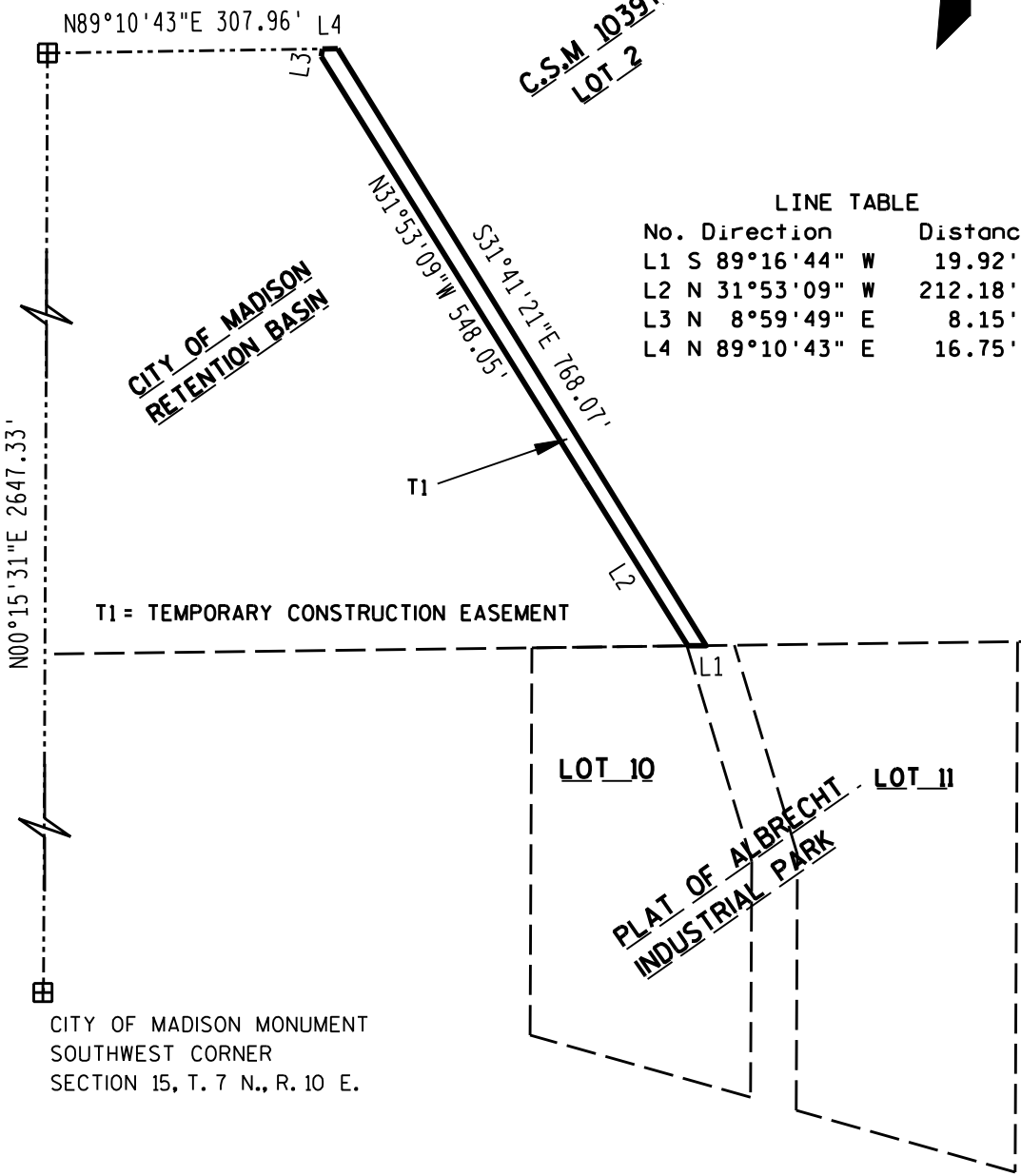


# EXHIBIT "E"

LOCATED IN PART OF THE NW 1/4 OF THE SW 1/4  
SECTION 15, TOWNSHIP 7 NORTH, RANGE 10 EAST  
CITY OF MADISON, DANE COUNTY, WISCONSIN



CITY OF MADISON MONUMENT  
W 1/4 CORNER  
SECTION 15, T. 7 N., R. 10 E.



LINE TABLE

No.	Direction	Distance
L1	S 89°16'44" W	19.92'
L2	N 31°53'09" W	212.18'
L3	N 8°59'49" E	8.15'
L4	N 89°10'43" E	16.75'

T1 = TEMPORARY CONSTRUCTION EASEMENT

THIS INSTRUMENT WAS  
DRAFTED BY EARTH TECH  
EARTH TECH, INC.  
MADISON, WI 53717.

SHEET OF

OWNER:  
CITY OF MADISON  
215 MARTIN LUTHER KING JR. BLVD  
MADISON, WI 53703