
WILSON + BLAIR

MADISON, WISCONSIN

JCAP REAL ESTATE

LANDMARKS + UDC FORMAL SUBMITTAL

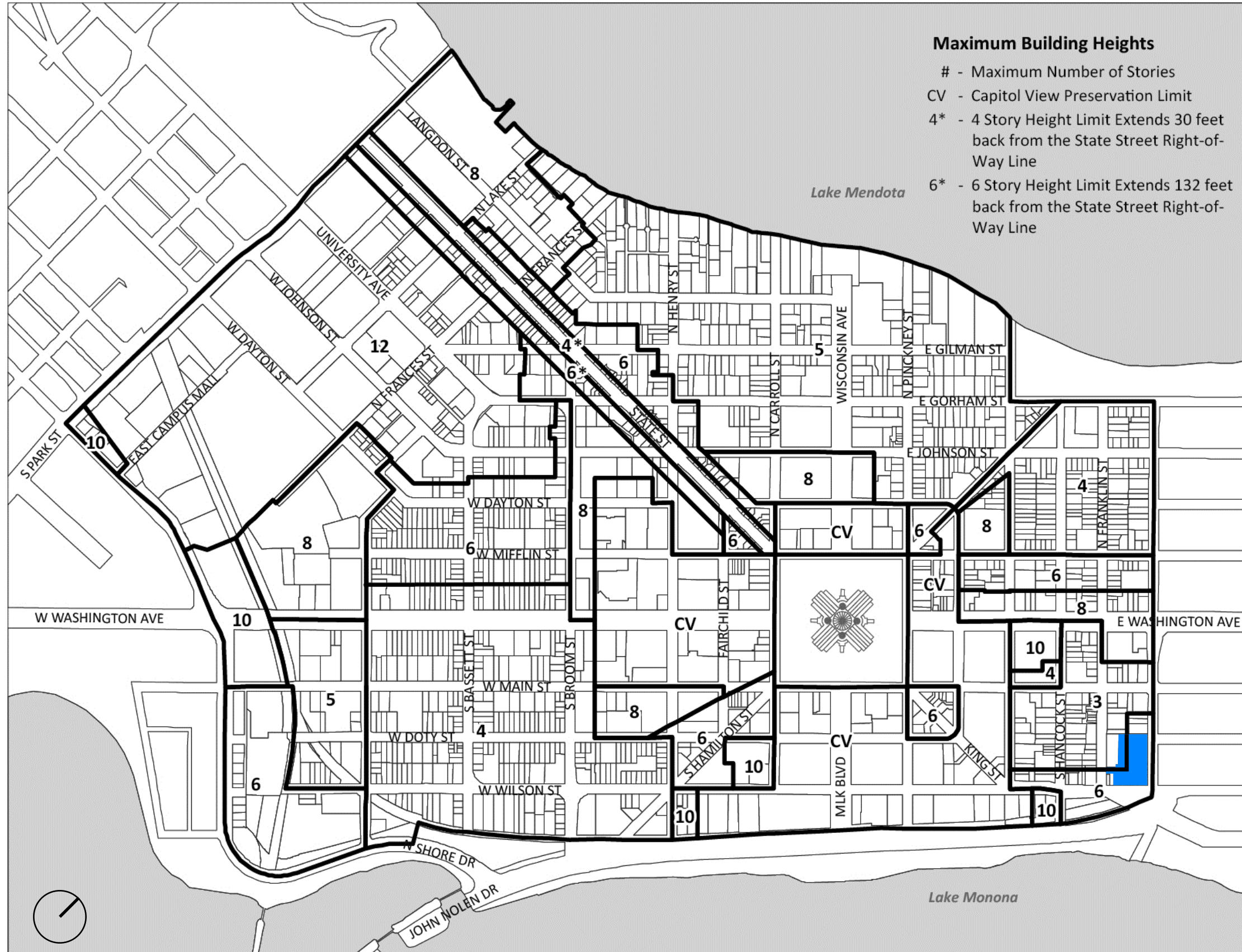
MAY 13, 2024

Kahler Slater

LOCATOR MAP



ZONING INFORMATION | HEIGHT MAP



ZONING INFORMATION | HISTORIC DISTRICT



ZONING INFORMATION | HISTORIC DISTRICT



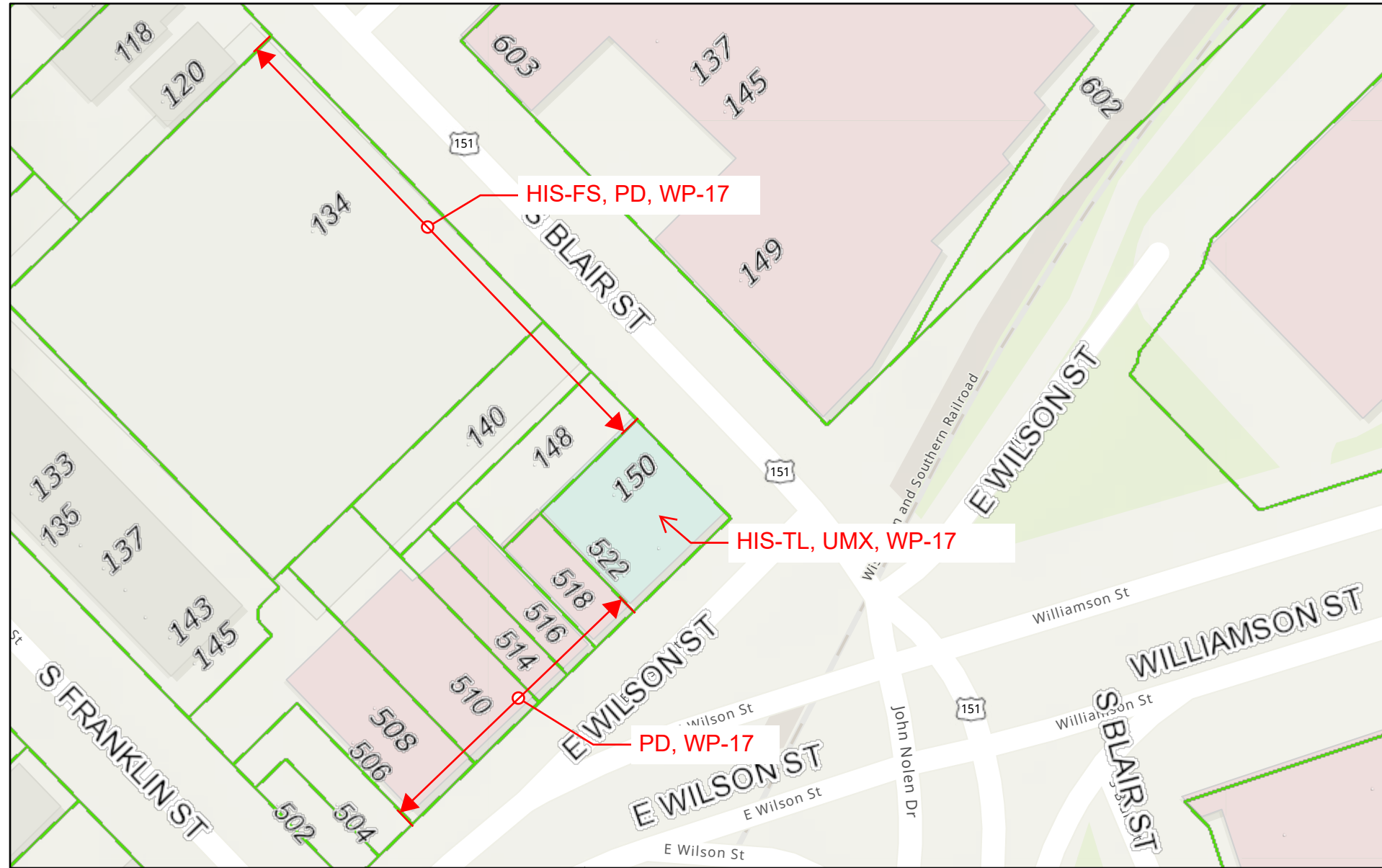
ZONING INFORMATION | HISTORIC DISTRICT



Boundary data source: Wisconsin Historical Society. Contributing status reflects original historic district submittal data. Parcels current as of map creation - 11/01/21

ZONING INFORMATION | PROPERTY MAP

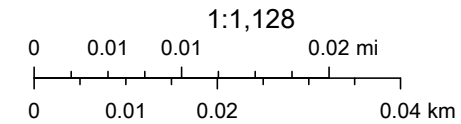
City of Madison, Wisconsin Property Map



3/14/2023, 1:59:18 PM

- Municipal Limits
- Parcels

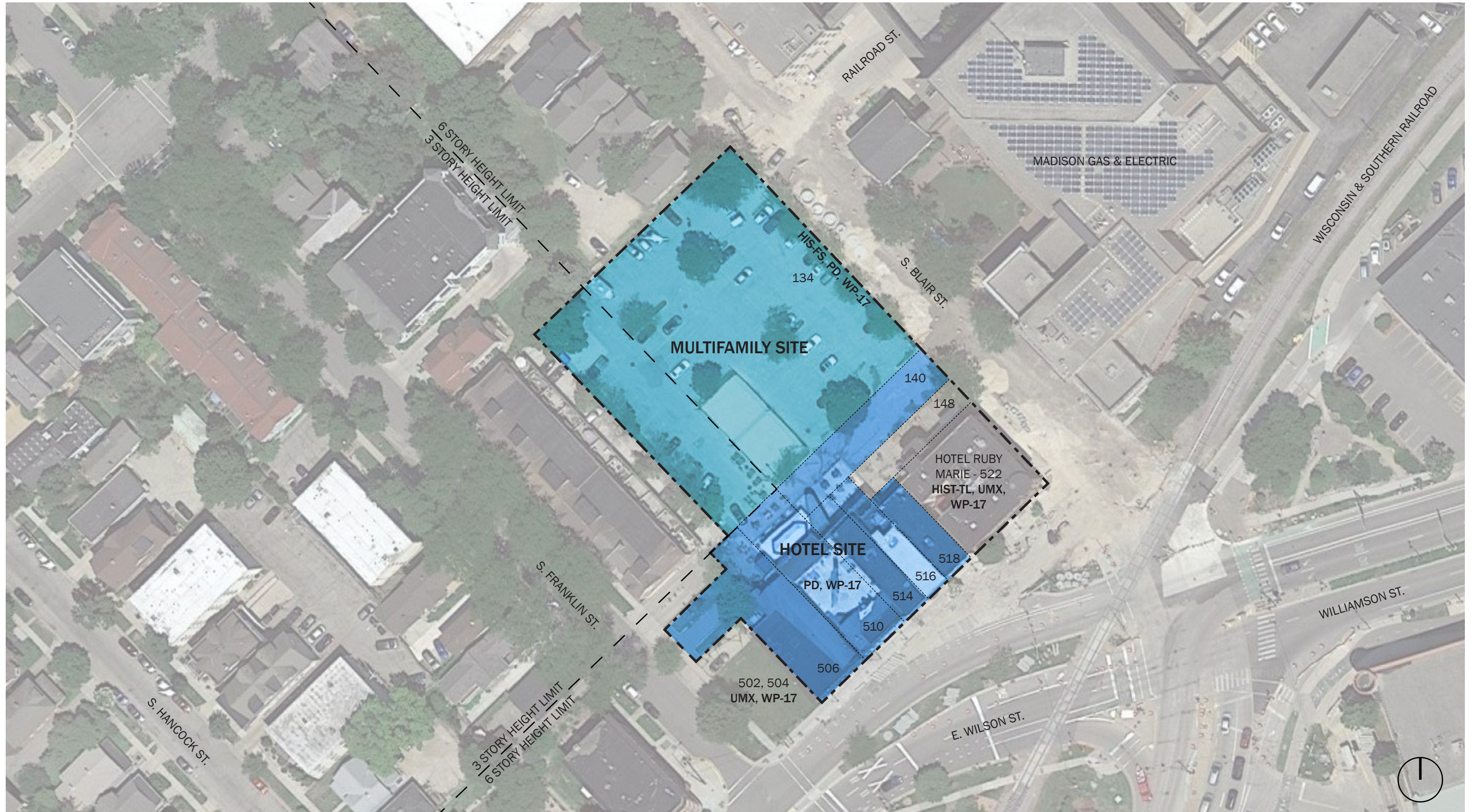
- WP = Wellhead Protection Overlay District
- PD = Planned Development District
- HIS-TL = Third Lake Ridge Historic District
- HIS-FS = First Settlement Historic District



Esri Community Maps Contributors, County of Dane, © OpenStreetMap, Microsoft, Esri, HERE, Garmin, SafeGraph, GeoTechnologies, Inc, METI/

City of Madison, Wisconsin
 Esri Community Maps Contributors, County of Dane, © OpenStreetMap, Microsoft, Esri, HERE, Garmin, SafeGraph, GeoTechnologies, Inc, METI/NASA, USGS, EPA, NPS, US Census Bureau, USDA | City of Madison IT |

EXISTING SITE PLAN - PROPOSED PARCEL DELINEATIONS

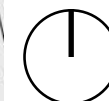


SITE PLAN

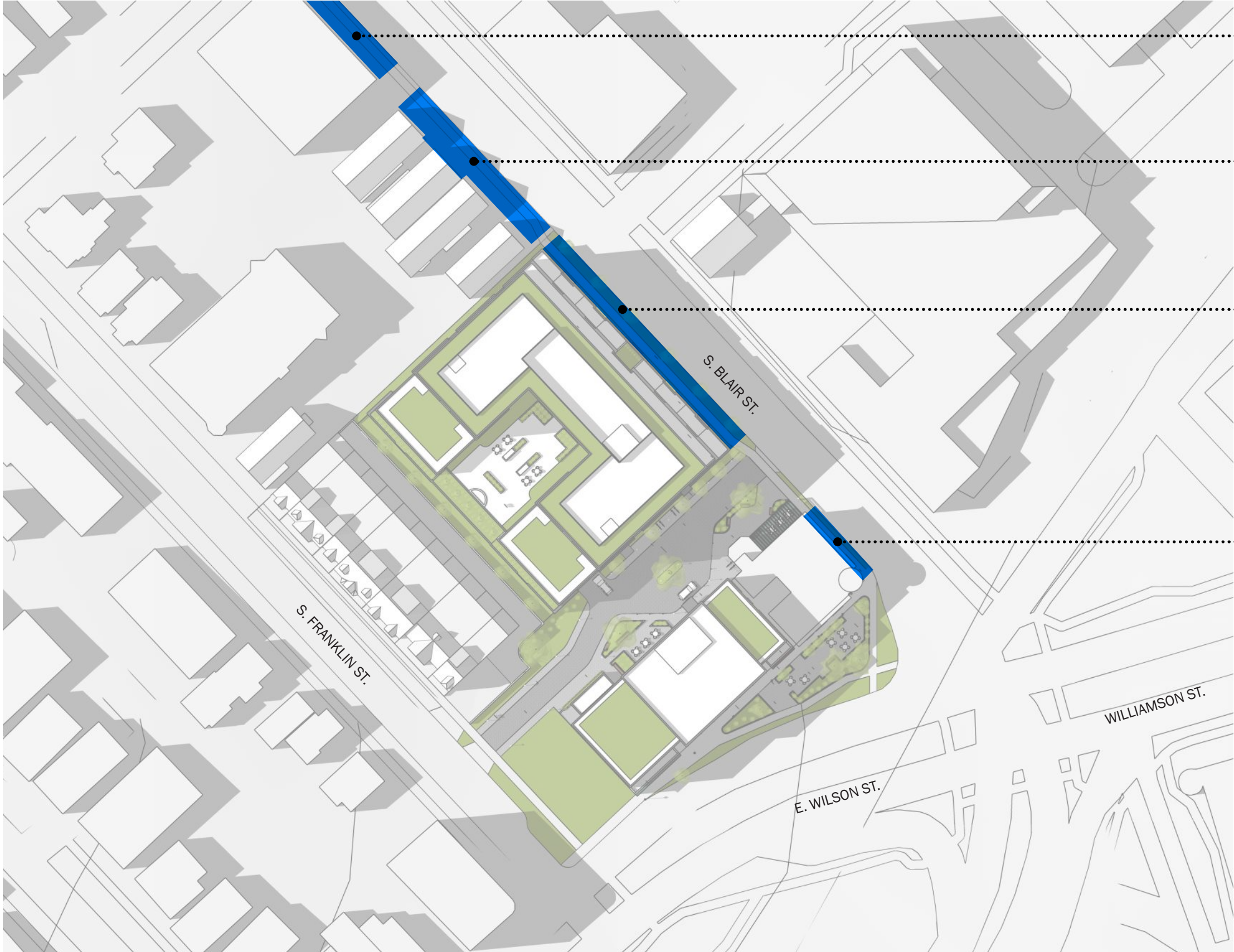


PLAN KEY

- 1. RESIDENTIAL BUILDING**
 - 8 STORIES ABOVE GRADE, ~170 UNITS
 - AFFORDABLE HOUSING HEIGHT BONUS
- 2. PARKING PODIUM**
 - AMENITY DECK ON TOP
- 3. WALK-UP TOWNHOMES**
- 4. MAIN RESIDENTIAL ENTRY**
- 5. EXISTING HOTEL RUBY MARIE**
 - 3 STORIES
- 6. OUTDOOR SEATING**
- 7. NEW HOTEL**
 - 6 STORIES, 100 KEYS
 - GROUND FLOOR F&B AND AMENITIES FOR
 - STREET ACTIVATION
- 8. HOTEL DROP-OFF**
- 9. ONE-WAY ENTRANCE FROM FRANKLIN**
- 10. HOTEL LOADING AREA**
- 11. HOTEL PEDESTRIAN ENTRANCE OFF WILSON**
- 12. POTENTIAL FUTURE STREATERY / PUBLIC ART**
- 13. PARKING GARAGE ENTRANCE**
 - ALSO SERVES AS TRASH PICKUP
- 14. "LIVING STREET" ALLEY WAY**
 - ALSO SERVES AS A FIRE LANE
- 15. SECONDARY RESIDENTIAL ENTRY AND STREET-FRONTING AMENITY**



SETBACKS ON BLAIR ST.



525 E. MAIN ST.
15' SETBACK FROM CURB

112-120 S. BLAIR ST.
20'-25' SETBACK FROM CURB

RESIDENTIAL BUILDING
15' SETBACK FROM CURB TO TOWNHOMES
25' SETBACK FROM CURB TO STORIES 3-7
35' SETBACK FROM CURB TO STORY 8

HOTEL RUBY MARIE
7' SETBACK FROM CURB

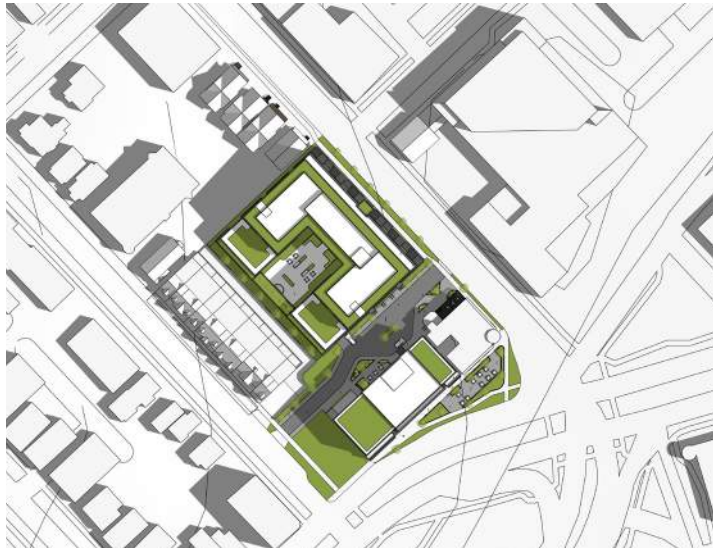
SHADOW STUDY

9 AM

SPRING EQUINOX



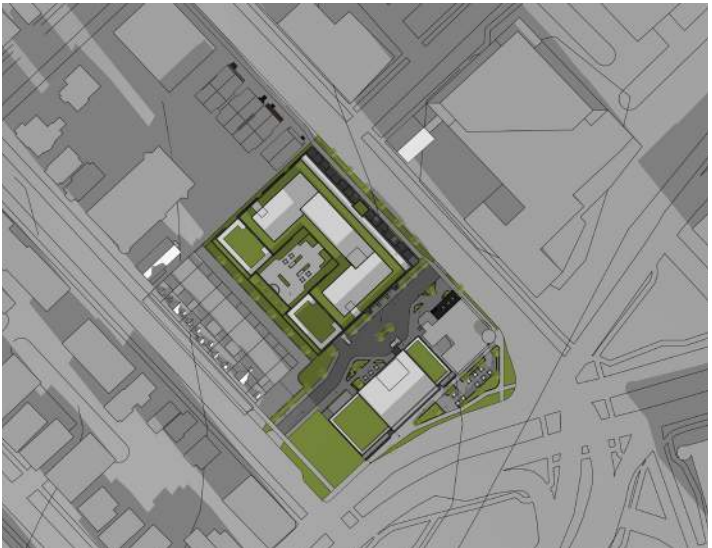
SUMMER SOLSTICE



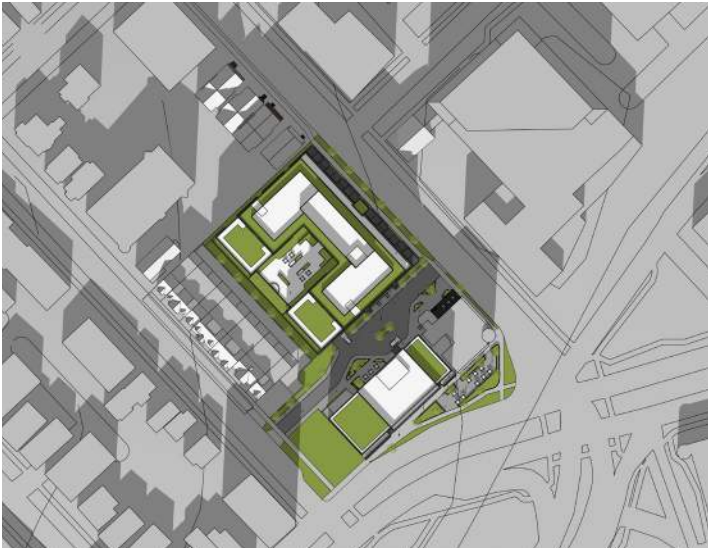
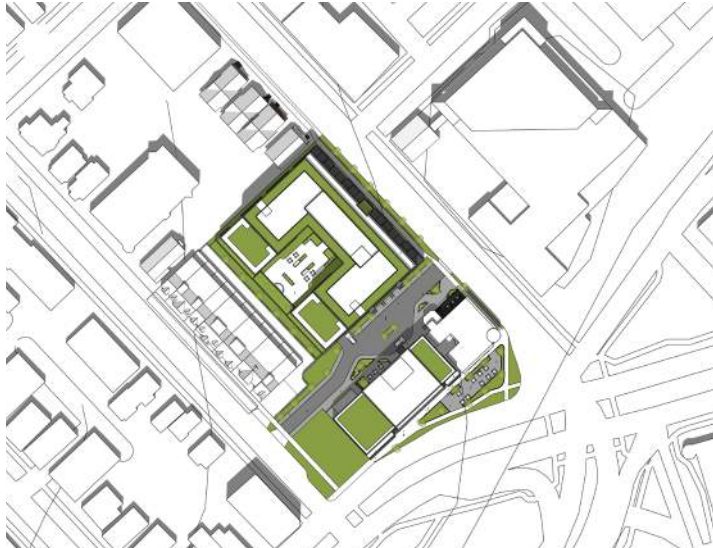
AUTUMNAL EQUINOX



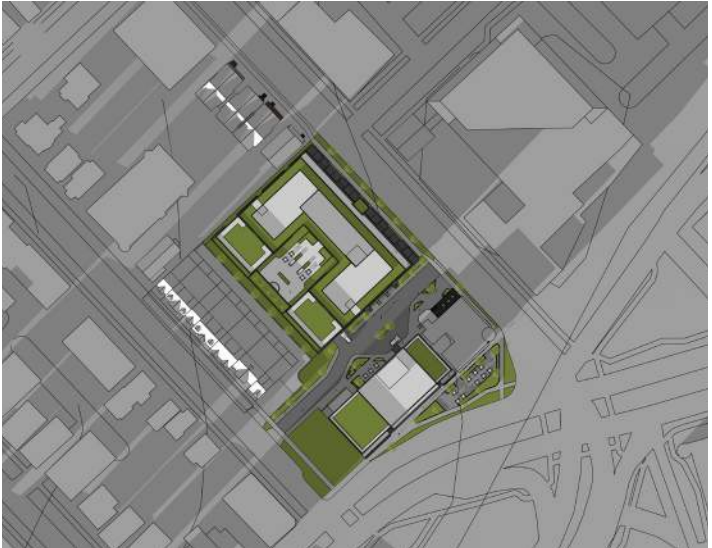
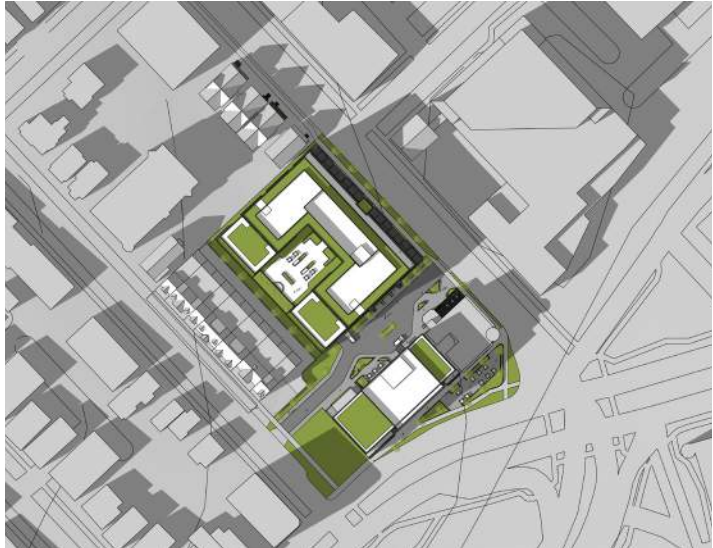
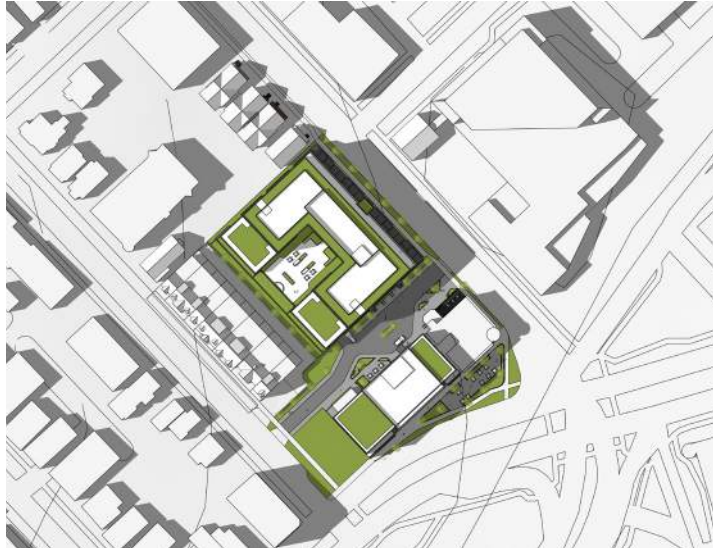
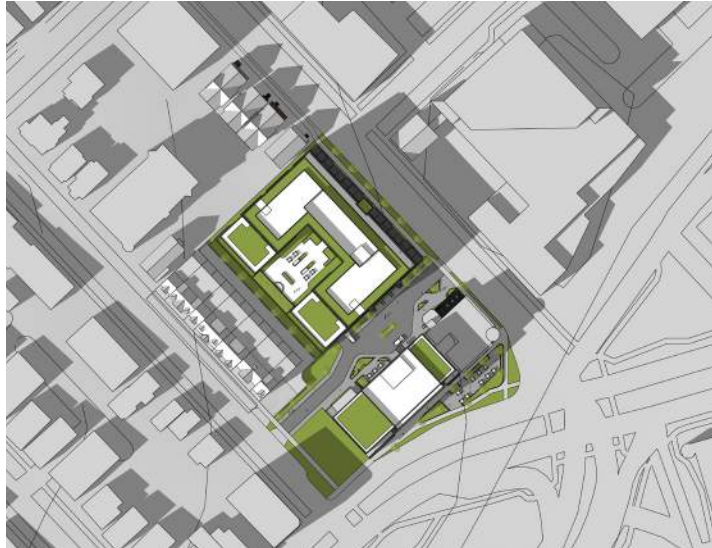
WINTER SOLSTICE



12 PM



3 PM



AERIAL VIEW



AERIAL VIEW



SITE ELEVATIONS

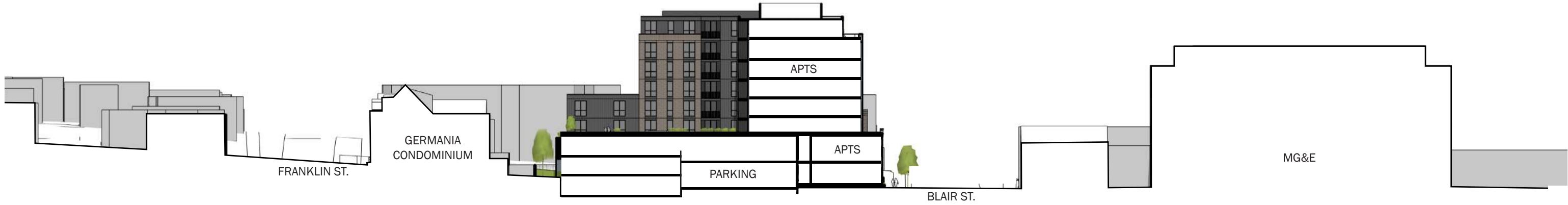


WILSON STREET SITE ELEVATION



BLAIR STREET SITE ELEVATION

SITE SECTIONS



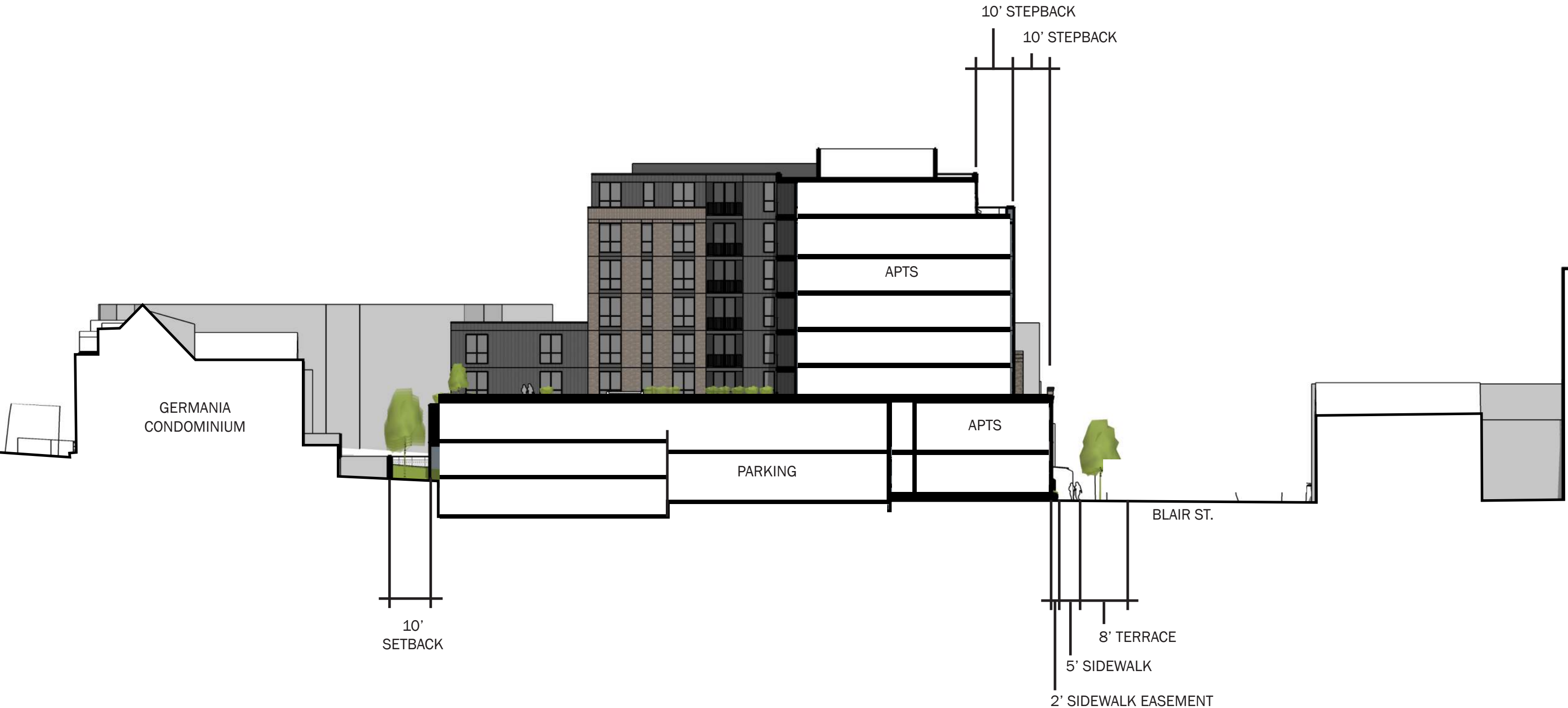
SITE SECTION THROUGH RESIDENTIAL BUILDING
LOOKING NORTHWEST



SITE SECTION THROUGH "LIVING STREET"
LOOKING NORTHWEST

- TOWNHOME
- RESIDENTIAL ENTRY
- RESIDENTIAL AMENITIES
- GARAGE ENTRY

SETBACKS AND STEPBACKS ON BLAIR



SITE SECTION THROUGH RESIDENTIAL BUILDING
LOOKING NORTHWEST

GROUND VIEW AT WILSON + BLAIR



PREVIOUS DESIGN FROM 09/05/23 INFORMATIONAL SUBMITTAL



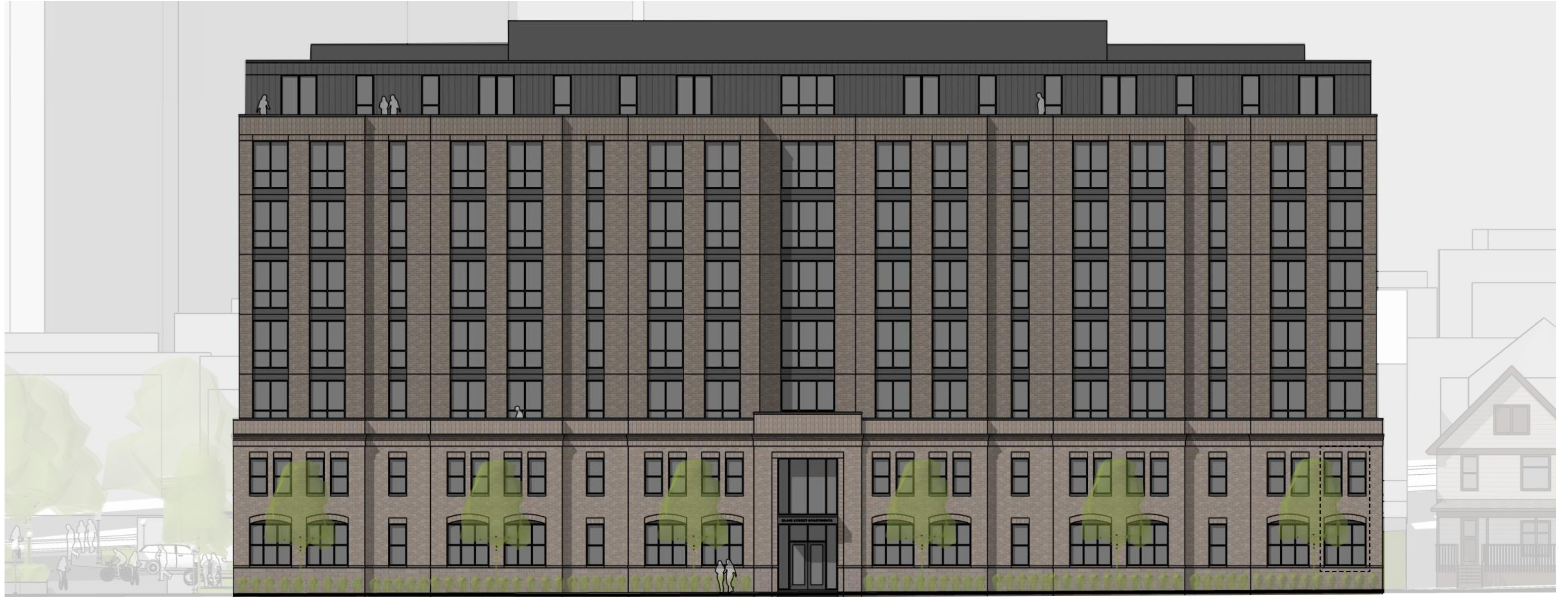
SECTION 2 | MULTIFAMILY BUILDING ON BLAIR ST.



BLAIR STREET ELEVATION



RESPONDING TO RELEVANT HISTORIC CONTEXT ON BLAIR STREET



602 RAILROAD ST.
FLAT ROOF, MASONRY, WINDOW PROPORTIONS, CORNICE EXPRESSION, RELATIVE SCALE, ARCHED WINDOWS



631 RAILROAD ST.
FLAT ROOF, MASONRY, DOUBLE-HEIGHT ENTRY EXPRESSION, BASE WAINSCOT, CORNICE EXPRESSION, WINDOW GROUPINGS, RELATIVE SCALE, BEAUX ARTS STYLE, ARCHED WINDOWS



524 E. WILSON ST.
FLAT ROOF, MASONRY, BASE WAINSCOT, WINDOW PROPORTIONS, RELATIVE SCALE, ARCHED WINDOWS



631 RAILROAD ST.
MASONRY, BASE WAINSCOT, WINDOW GROUPINGS, ARCHED WINDOWS

BUILDING ELEVATIONS



BLAIR ST. ELEVATION

BUILDING ELEVATIONS



LIVING STREET ELEVATION

BUILDING ELEVATIONS



NEIGHBORING EXISTING CONCRETE SCREEN WALL - SEE PLANS FOR LOCATION. SEE LANDSCAPE PLANS FOR LANDSCAPING.

SOUTHWEST ELEVATION

BUILDING ELEVATIONS



- ROOF 107'-0"
- LEVEL 10 103'-0"
- LEVEL 9 101'-0"
- LEVEL 8 99'-0"
- LEVEL 7 97'-0"
- LEVEL 6 95'-0"
- LEVEL 5 93'-0"
- LEVEL 4 91'-0"
- LEVEL 3 89'-0"
- LEVEL 2 87'-0"
- LEVEL 1 85'-0"



- ROOF 107'-0"
- LEVEL 10 103'-0"
- LEVEL 9 101'-0"
- LEVEL 8 99'-0"
- LEVEL 7 97'-0"
- LEVEL 6 95'-0"
- LEVEL 5 93'-0"
- LEVEL 4 91'-0"
- LEVEL 3 89'-0"
- LEVEL 2 87'-0"
- LEVEL 1 85'-0"
- LEVEL III 83'-0"
- LEVEL II 81'-0"

NORTHWEST ELEVATION

BLAIR ST. ELEVATION



MATERIAL PALETTE - MULTIFAMILY



CAST STONE (BASE WAINSCOT AND WINDOW SILLS)



METAL SIDING - BLACK (CLADDING IN BETWEEN MASONRY EXPRESSIONS AND UPPER STORY)



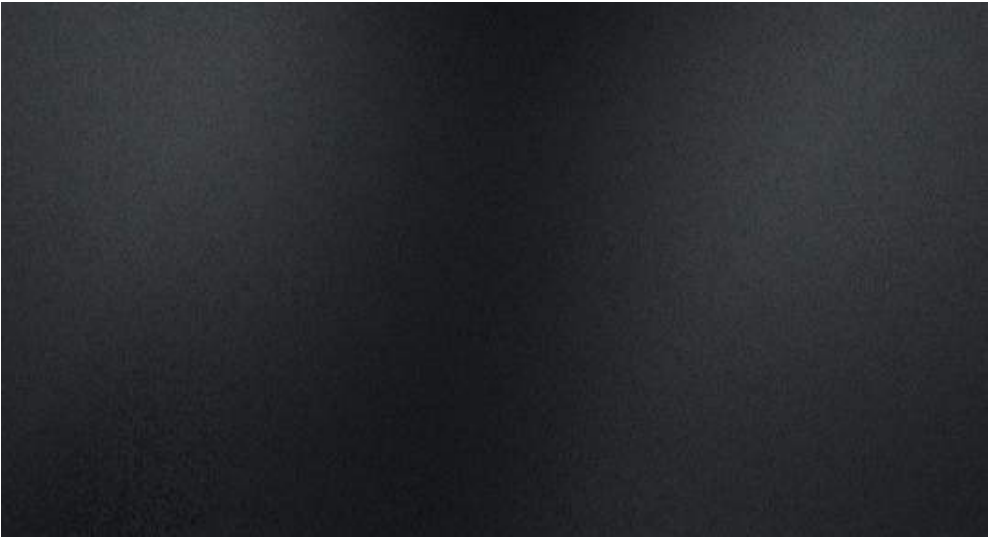
ALUMINUM METAL COPING, TRIM AND WINDOW FRAMES



CLAY BRICK - LIGHT CREAM (BASE OF BUILDING)

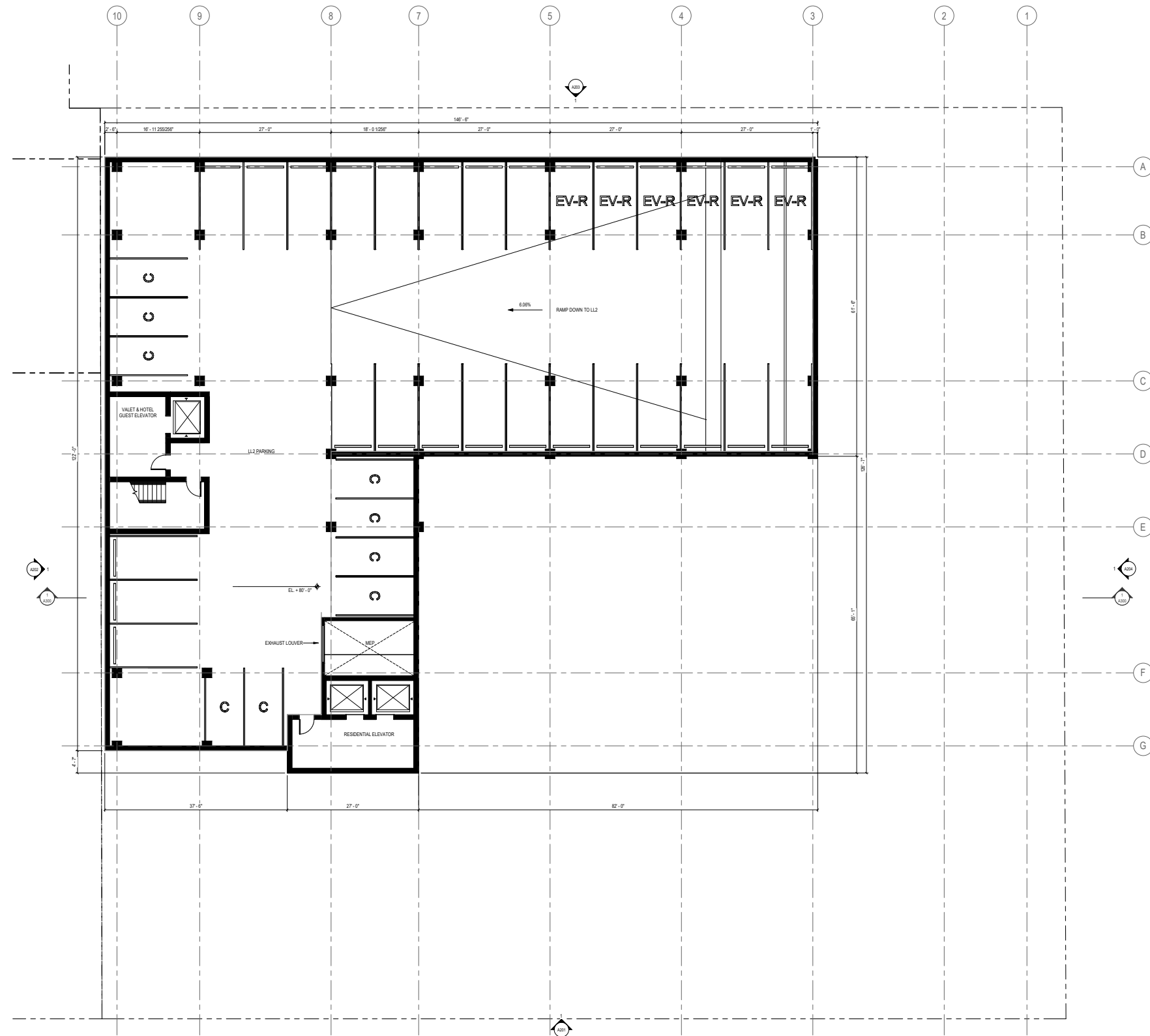


CLAY BRICK - GREY/BROWN (UPPER STORIES)



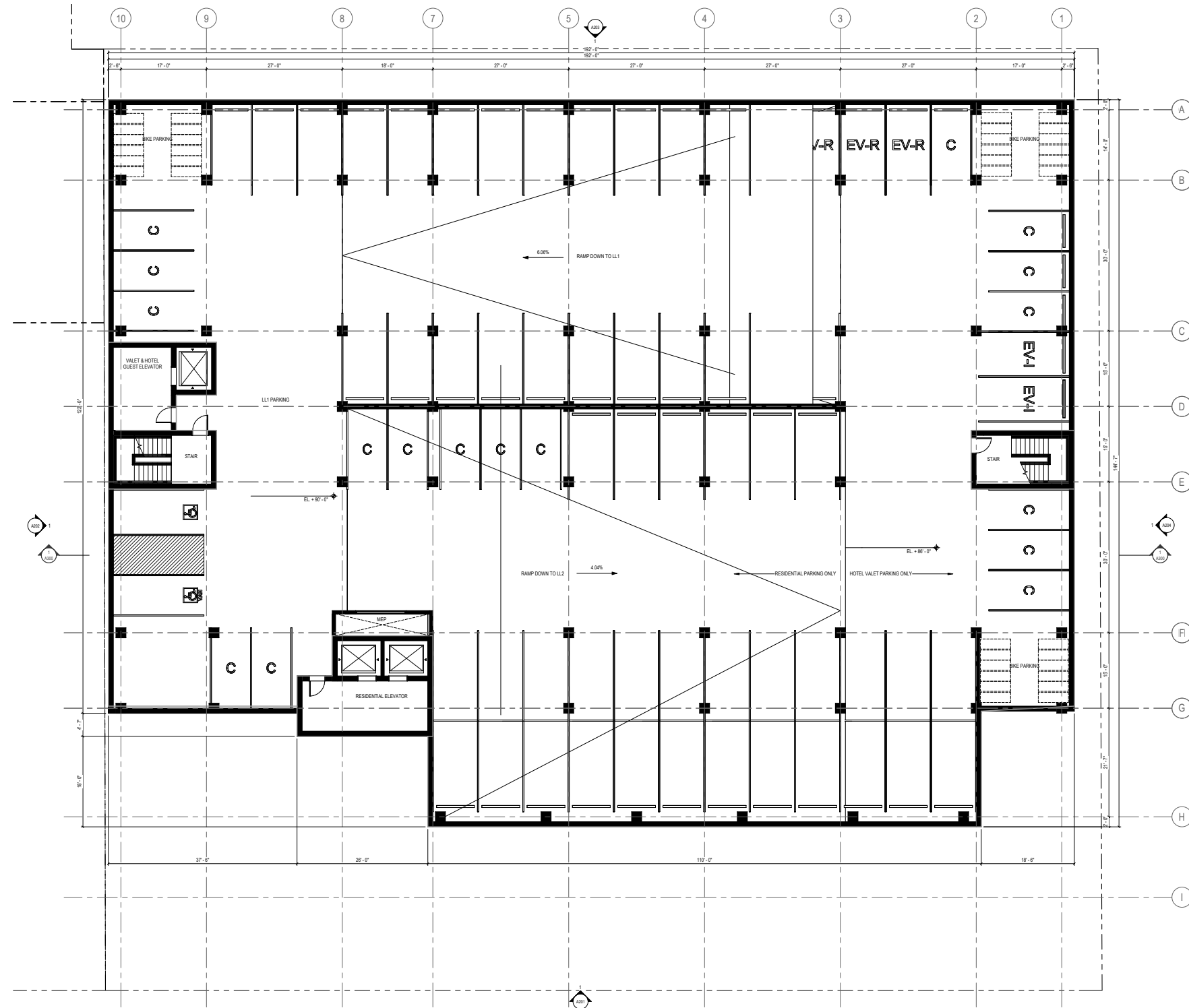
METAL PANEL, BLACK (WINDOW SPANDRELS UPPER STORIES)

MULTIFAMILY FLOOR PLANS



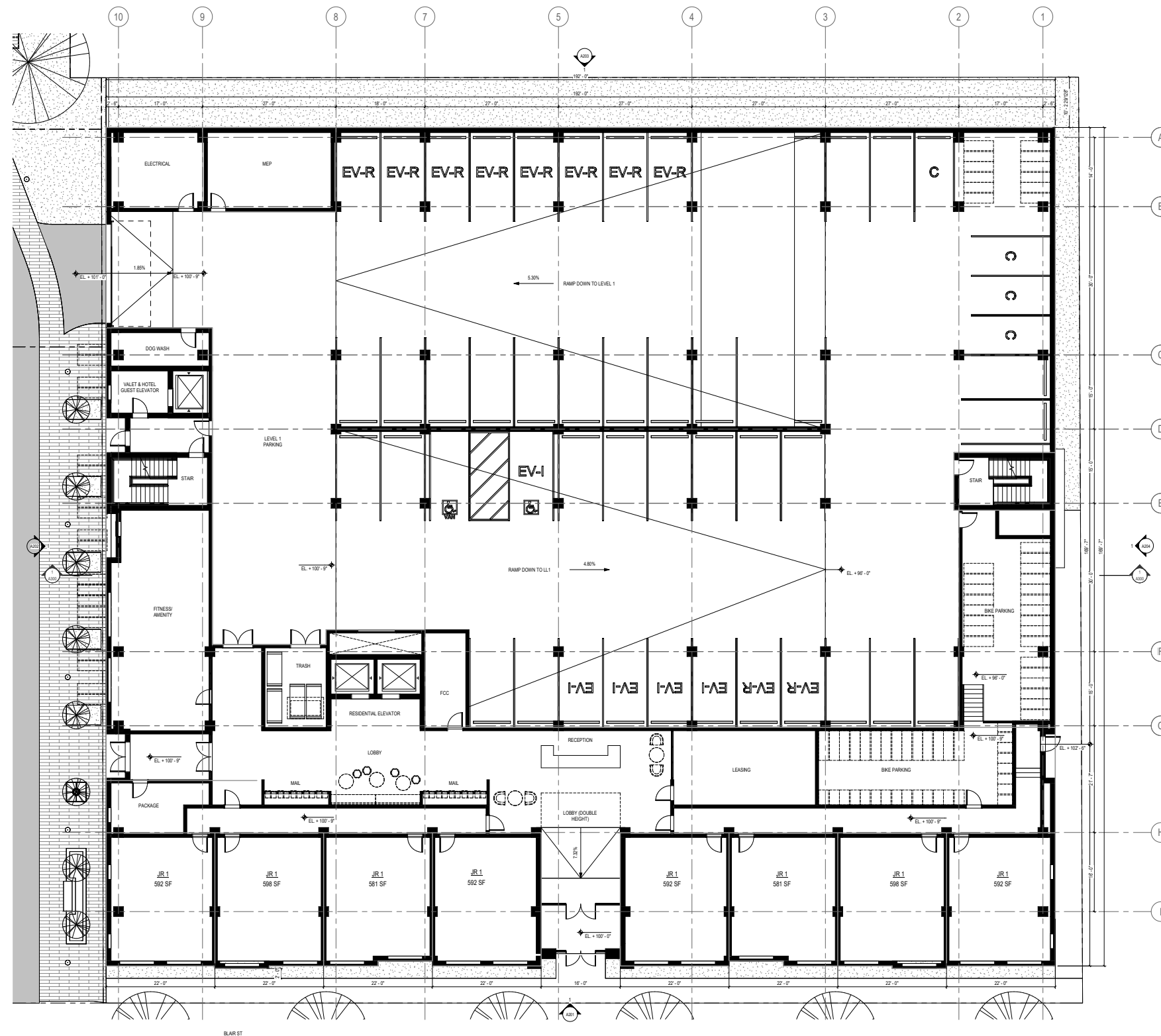
LOWER LEVEL 2

MULTIFAMILY FLOOR PLANS



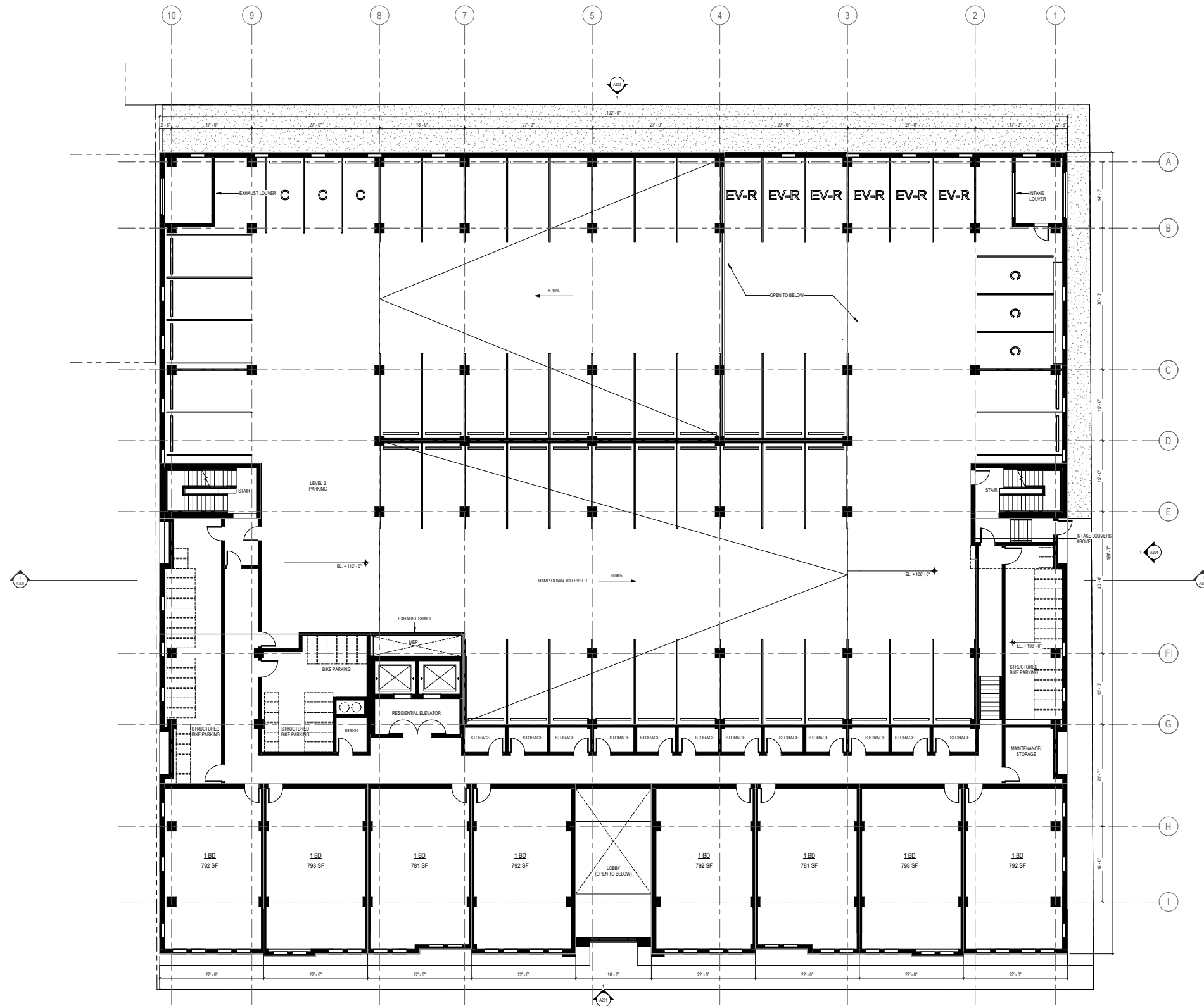
LOWER LEVEL

MULTIFAMILY FLOOR PLANS



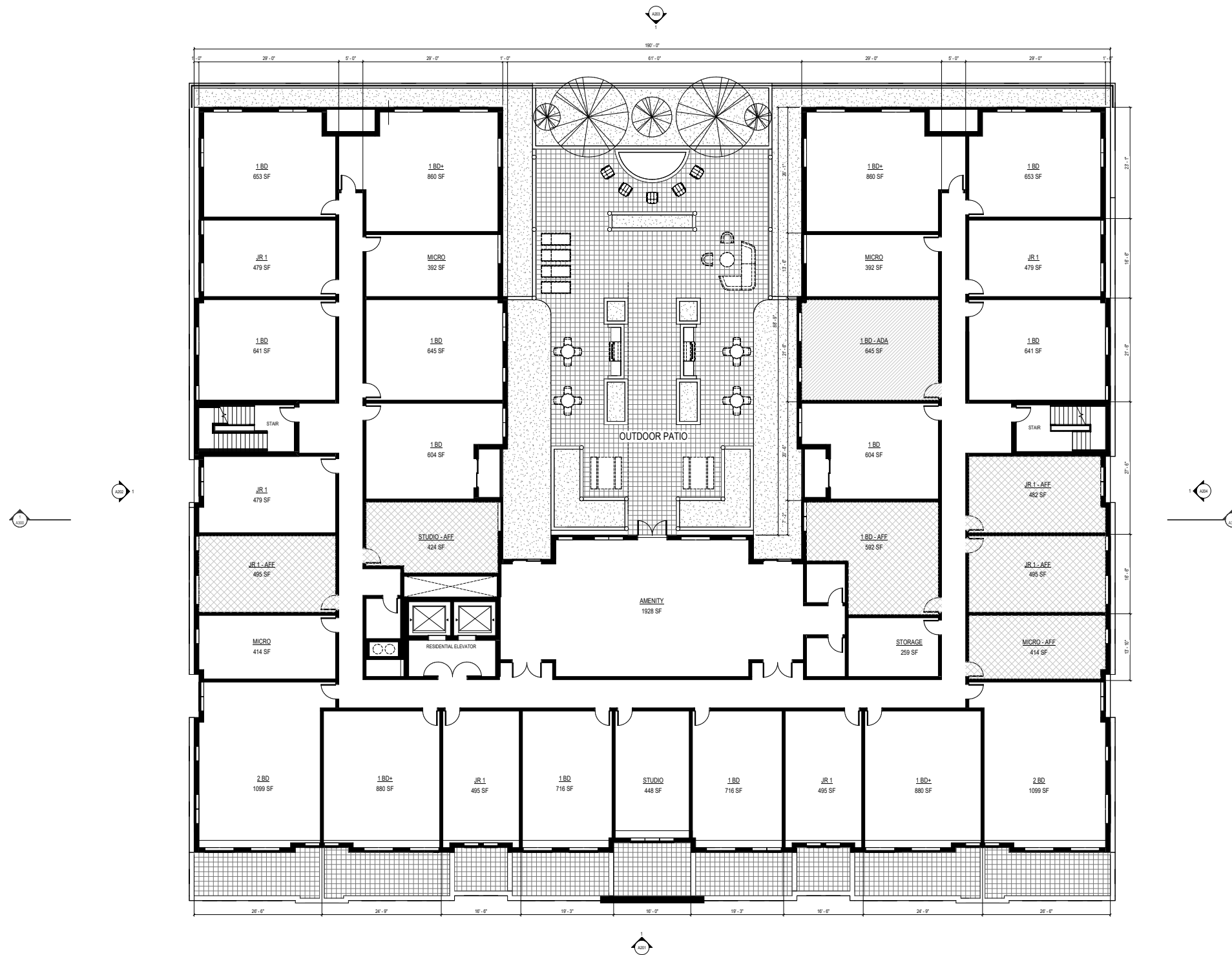
LEVEL 1

MULTIFAMILY FLOOR PLANS



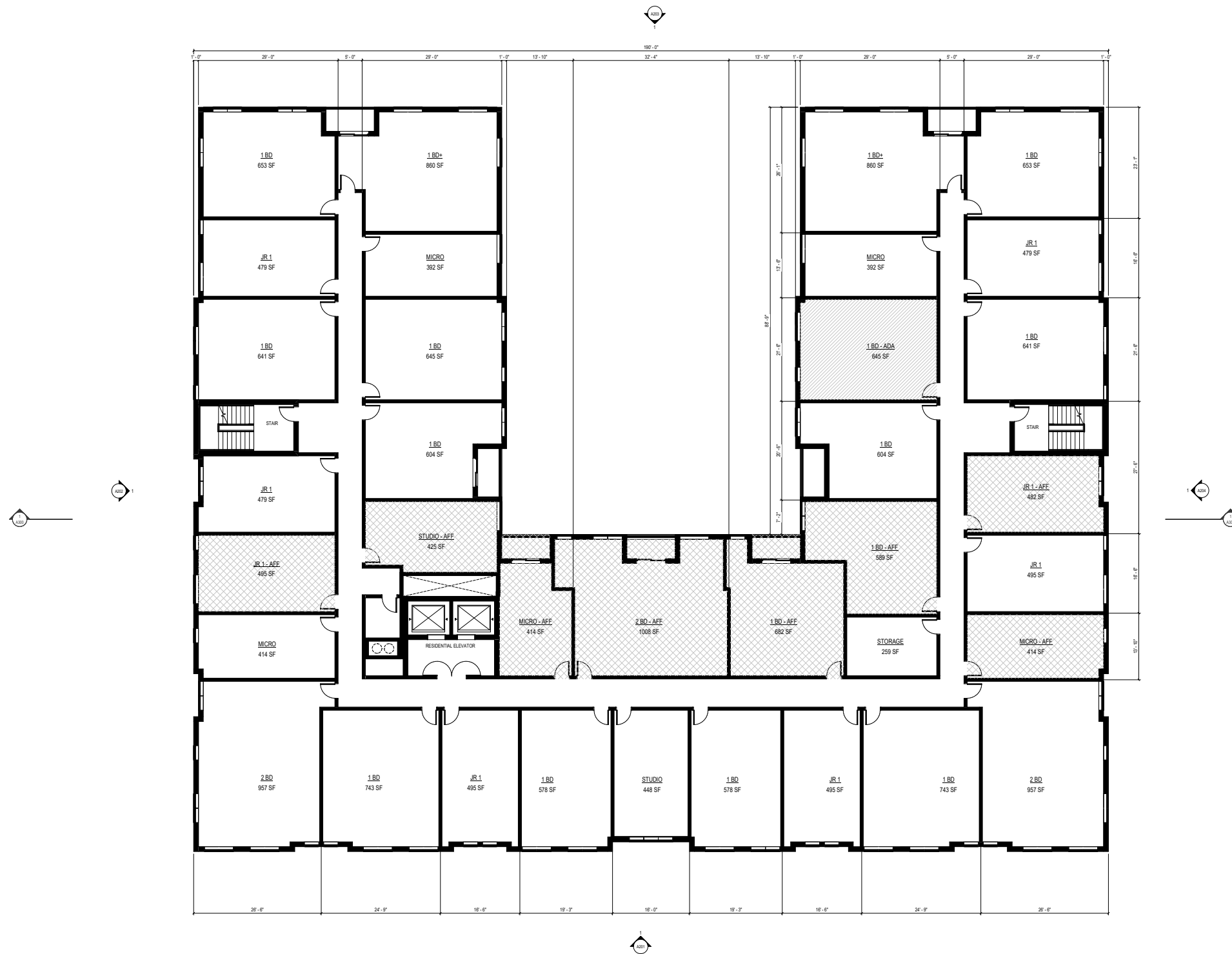
LEVEL 2

MULTIFAMILY FLOOR PLANS



LEVEL 3

MULTIFAMILY FLOOR PLANS



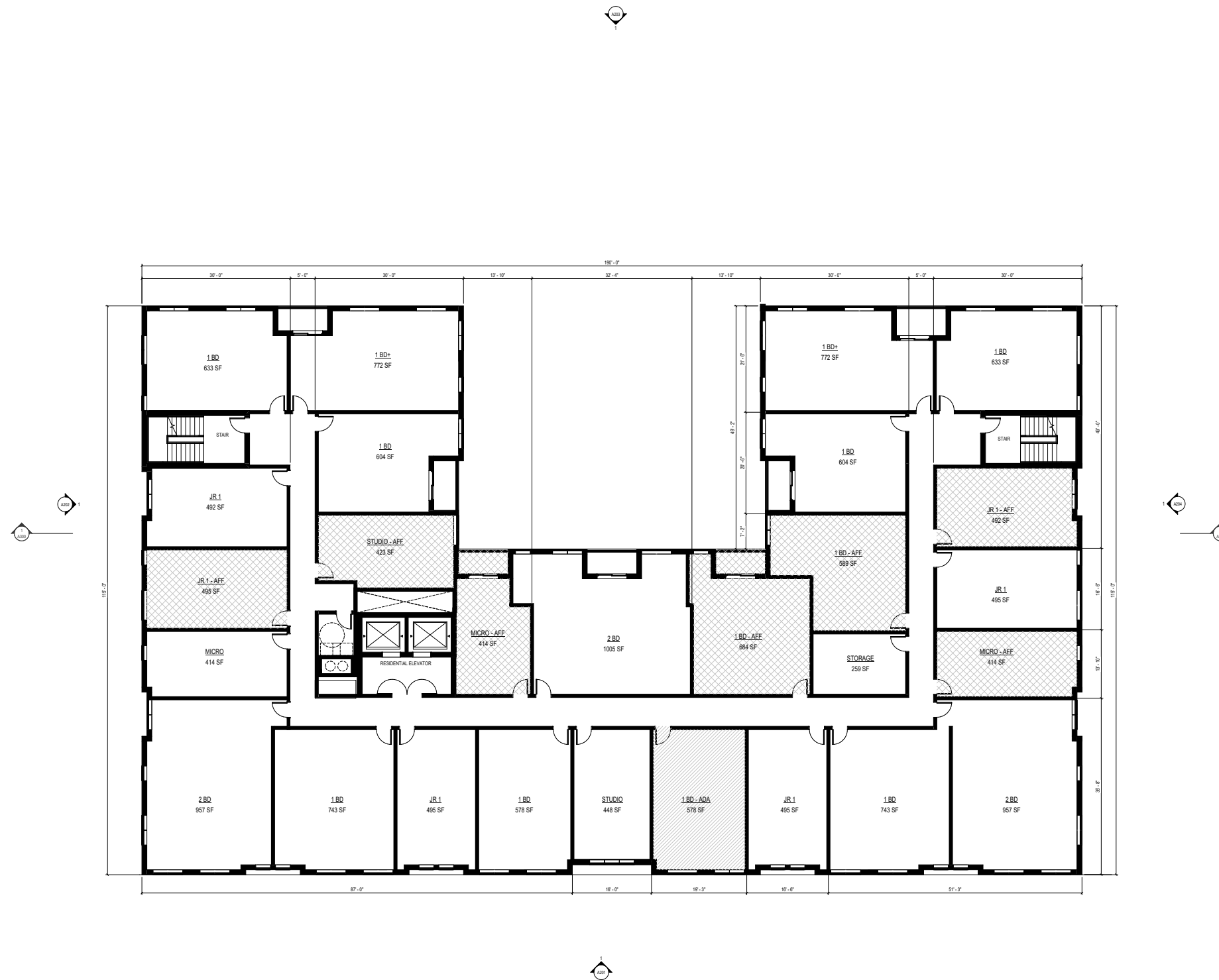
LEVEL 4

MULTIFAMILY FLOOR PLANS



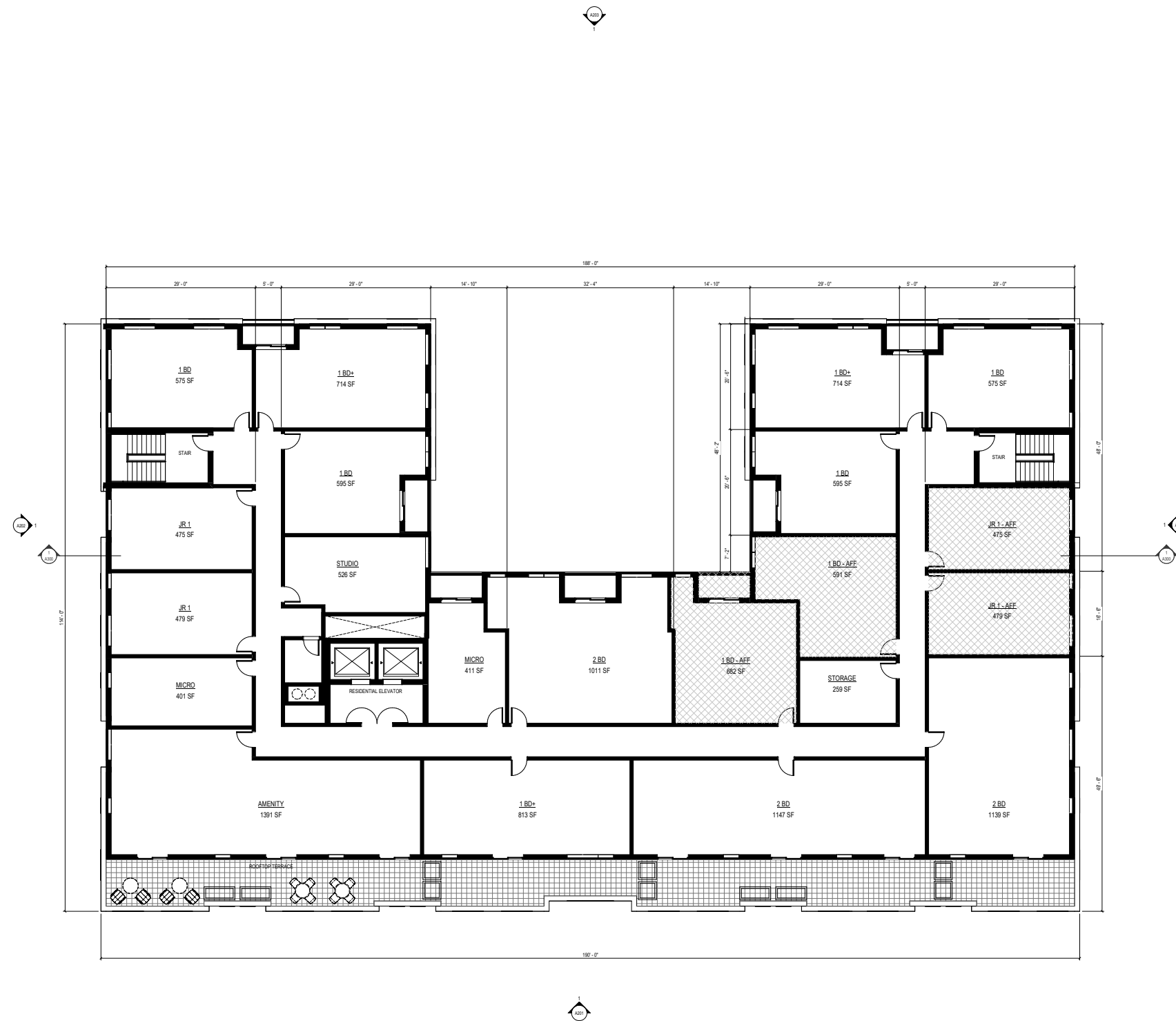
LEVEL 5

MULTIFAMILY FLOOR PLANS



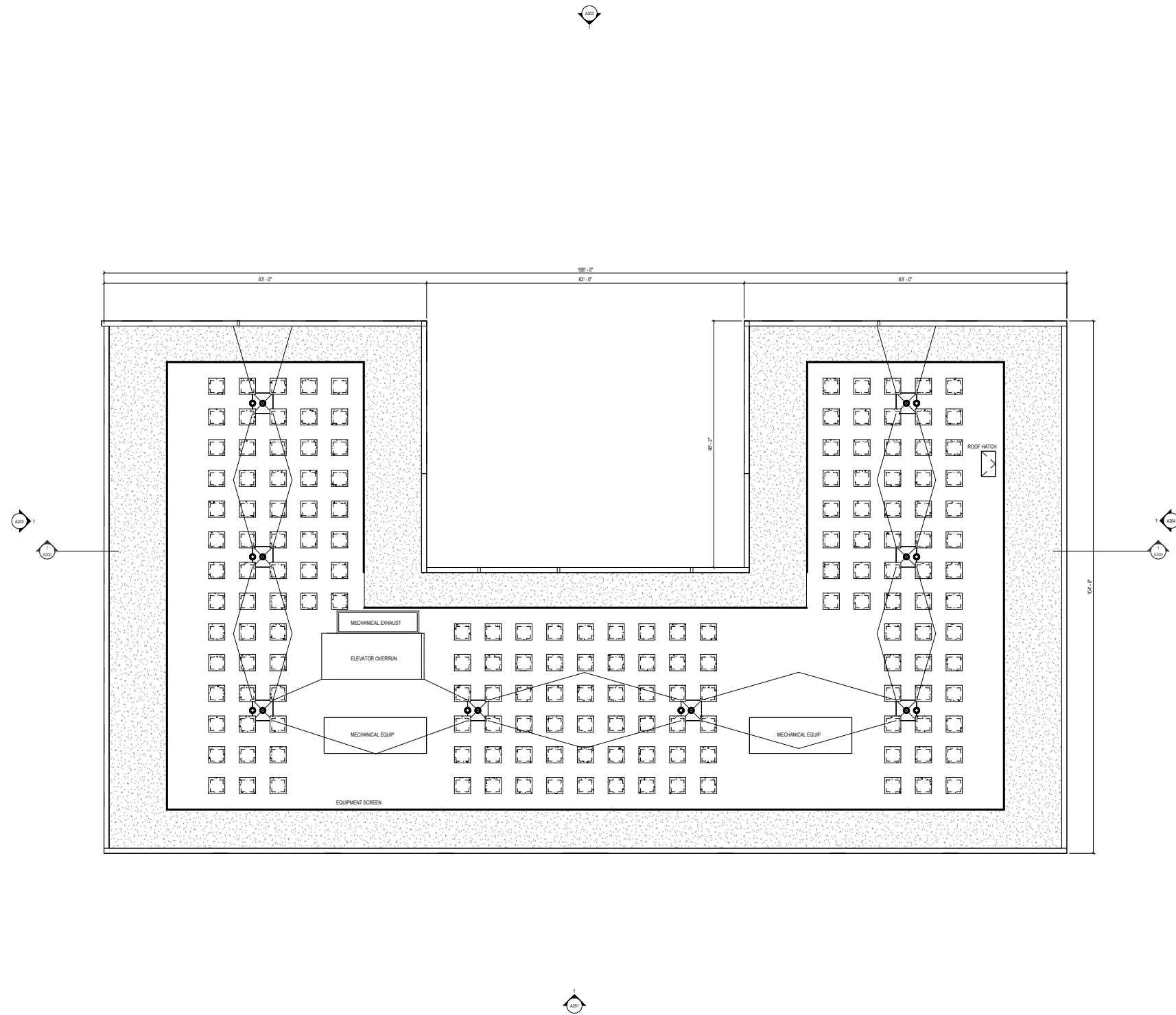
LEVEL 6 - 7

MULTIFAMILY FLOOR PLANS



LEVEL 8

MULTIFAMILY FLOOR PLANS

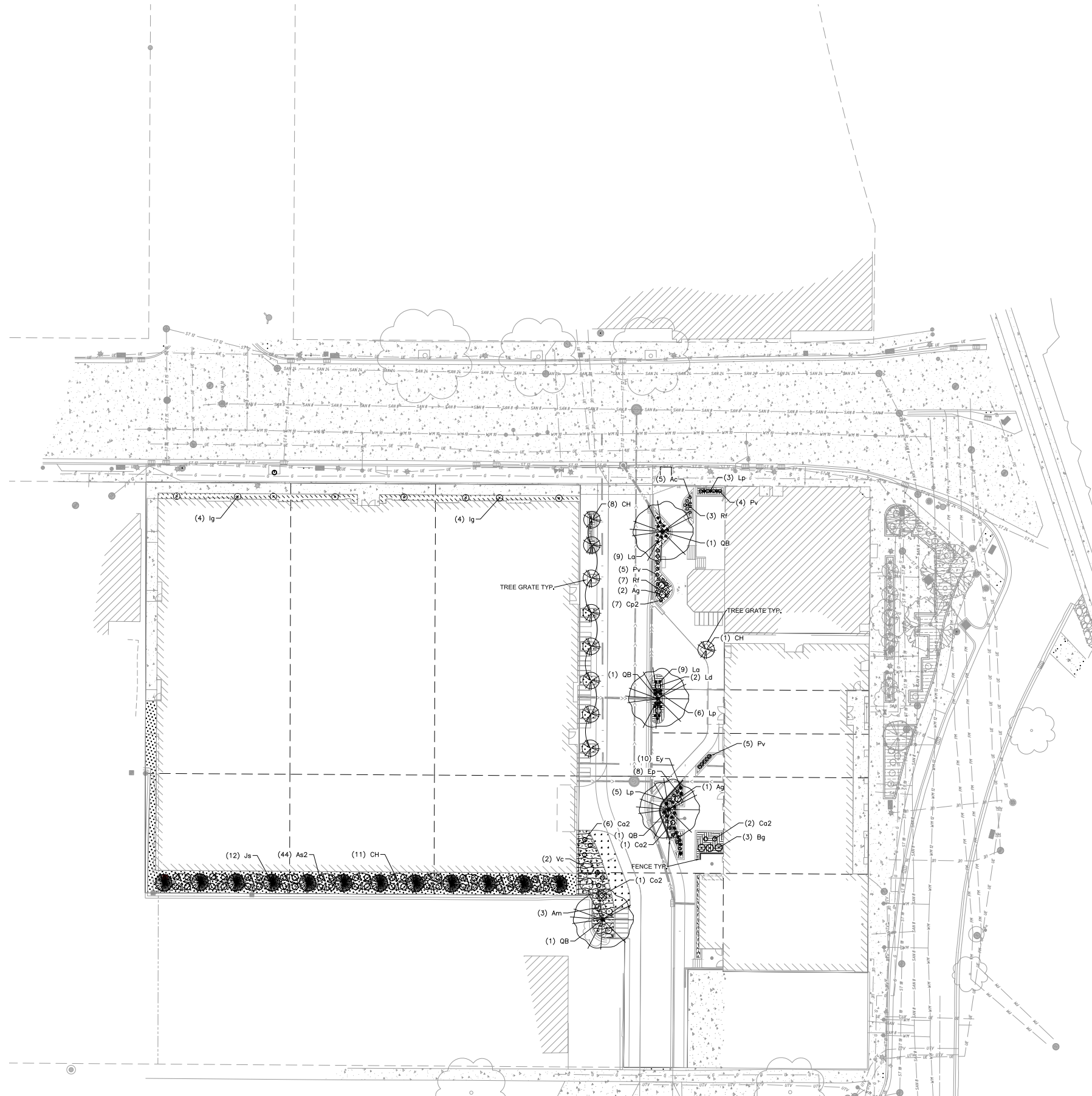


ROOF LEVEL

SECTION 3 | LIVING STREET



LANDSCAPE PLAN



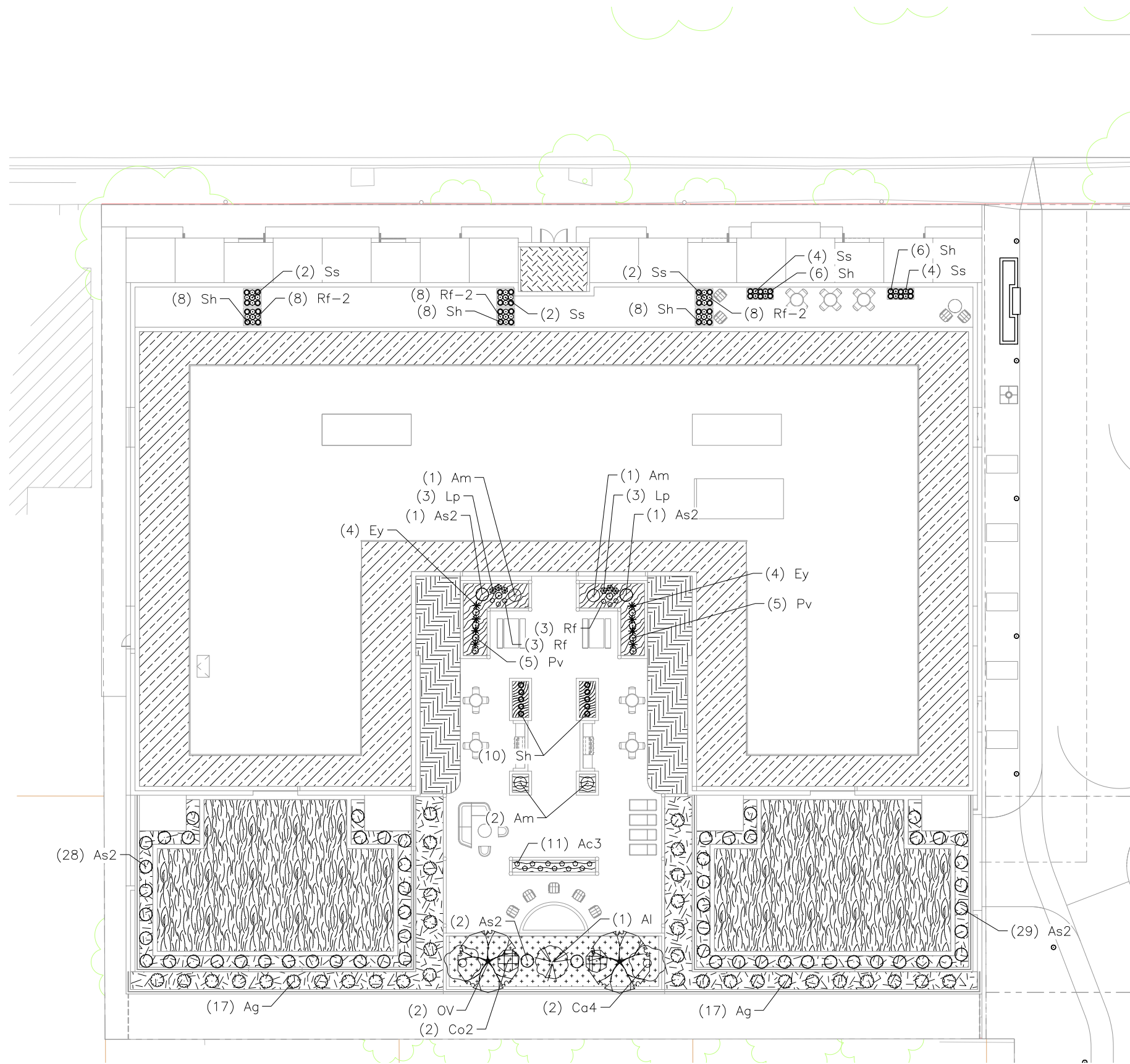
PLANT SCHEDULE GRADE

CODE	BOTANICAL / COMMON NAME	ROOT COND.	SIZE	QTY
DECIDUOUS TREES				
CH	Callis occidentalis / Prairie Sentinel® Hackberry	B & B	1.5" Cal	20
QB	Quercus bicolor / Swamp White Oak	B & B	2.5" Cal	4
EVERGREEN TREES				
Js	Juniperus virginiana 'Hillspire' / Hillspire Eastern Redcedar	B & B	5' ht.	12
DECIDUOUS SHRUBS				
As2	Amelanchier stolonifera / Burning Serviceberry	Cont.	2 Gal.	44
Am	Aronia melanocarpa / Black Chokeberry	Cont.	5 Gal.	4
Ag	Aronia melanocarpa 'CONNAM012' / Ground Hug® Black Chokeberry	Cont.	2 Gal.	2
Co2	Ceanothus americanus / New Jersey Tea	Cont.	3 Gal.	9
Co2	Cephalanthus occidentalis / Buttonbush	Cont.	5 Gal.	1
Ld	Lonicera dioica / Honeysuckle	Cont.	3 Gal.	2
Vc	Viburnum cassinoides / Withered Viburnum	Cont.	5 Gal.	2
EVERGREEN SHRUBS				
Bg	Buxus x 'Green Mountain' / Green Mountain Boxwood	Cont.	5 Gal.	3
Ig	Ilex glabra 'SMINGAB17' / Gem Box® Inkberry Holly	Container	#3	8
PERENNIALS				
Ac	Allium cernuum / Nodding Onion	Cont.	Plnt	5
Cp2	Coreopsis palmata / Stiff Tickseed	Cont.	Plnt	7
Ep	Echinacea pallida / Pale Purple Coneflower	Cont.	1 Gal.	8
Ey	Eryngium yuccifolium / Rattlesnake Master	Cont.	1 Gal.	10
La	Liatris aspera / Rough Blazing Star	Cont.	1 Gal.	18
Lp	Liatris pycnostachya / Gayfeather	Cont.	1 Gal.	14
Pv	Panicum virgatum / Switch Grass	Cont.	1 Gal.	14
Rf	Rudbeckia fulgida / Coneflower	Cont.	1 Gal.	10

GROUNDCOVER PLANT SCHEDULE GRADE

GC #1	<ul style="list-style-type: none"> Anemone canadensis / Canadian Anemone Carex blakeana / Prairie Sedge Sporobolus heterolepis / Prairie Dropseed 	352 sf TOTAL 106 PLUGS 210 PLUGS 210 PLUGS
GC #2	<ul style="list-style-type: none"> Carex albicans / White-tinged Sedge Eragrostis spectabilis / Purple Lovegrass 	252 sf TOTAL 284 PLUGS 94 PLUGS
GC #3	<ul style="list-style-type: none"> Azoreum canadense / Wild Ginger Carex albicans / White-tinged Sedge Carex jamesii / James' Sedge Carex pennsylvanica / Pennsylvania Sedge Carex rosea / Rosy Sedge Hydrophyllum virginianum / Virginia Waterleaf Polemonium reptans / Greek Vervain 	507 sf TOTAL 60 PLUGS 60 PLUGS 114 PLUGS 114 PLUGS 334 PLUGS 22 PLUGS 54 PLUGS
GC #4	<ul style="list-style-type: none"> Carex albicans / White-tinged Sedge 	135 sf TOTAL 200 PLUGS
GC #5	<ul style="list-style-type: none"> Allium cernuum / Nodding Onion Carex albicans / White-tinged Sedge Carex oregona / Oval Sedge Eragrostis spectabilis / Purple Lovegrass Geum triflorum / Prairie Smoke 	200 sf TOTAL 30 PLUGS 129 PLUGS 90 PLUGS 36 PLUGS 15 PLUGS
GC #6	<ul style="list-style-type: none"> Carex blakeana / Prairie Sedge Coreopsis palmata / Stiff Tickseed Dalea purpurea / Purple Prairie Clover Liatris aspera / Rough Blazing Star Schizachyrium scoparium / Little Bluestem Sporobolus heterolepis / Prairie Dropseed 	523 sf TOTAL 125 PLUGS 63 PLUGS 63 PLUGS 63 PLUGS 78 PLUGS 392 PLUGS
GC #7	<ul style="list-style-type: none"> Carex albicans / White-tinged Sedge Carex jamesii / James' Sedge Carex pennsylvanica / Pennsylvania Sedge Carex rosea / Rosy Sedge 	2,276 sf TOTAL 341 PLUGS 341 PLUGS 2,214 PLUGS 511 PLUGS
TURF		276 sf TOTAL

LANDSCAPE PLAN | MULTIFAMILY ROOF



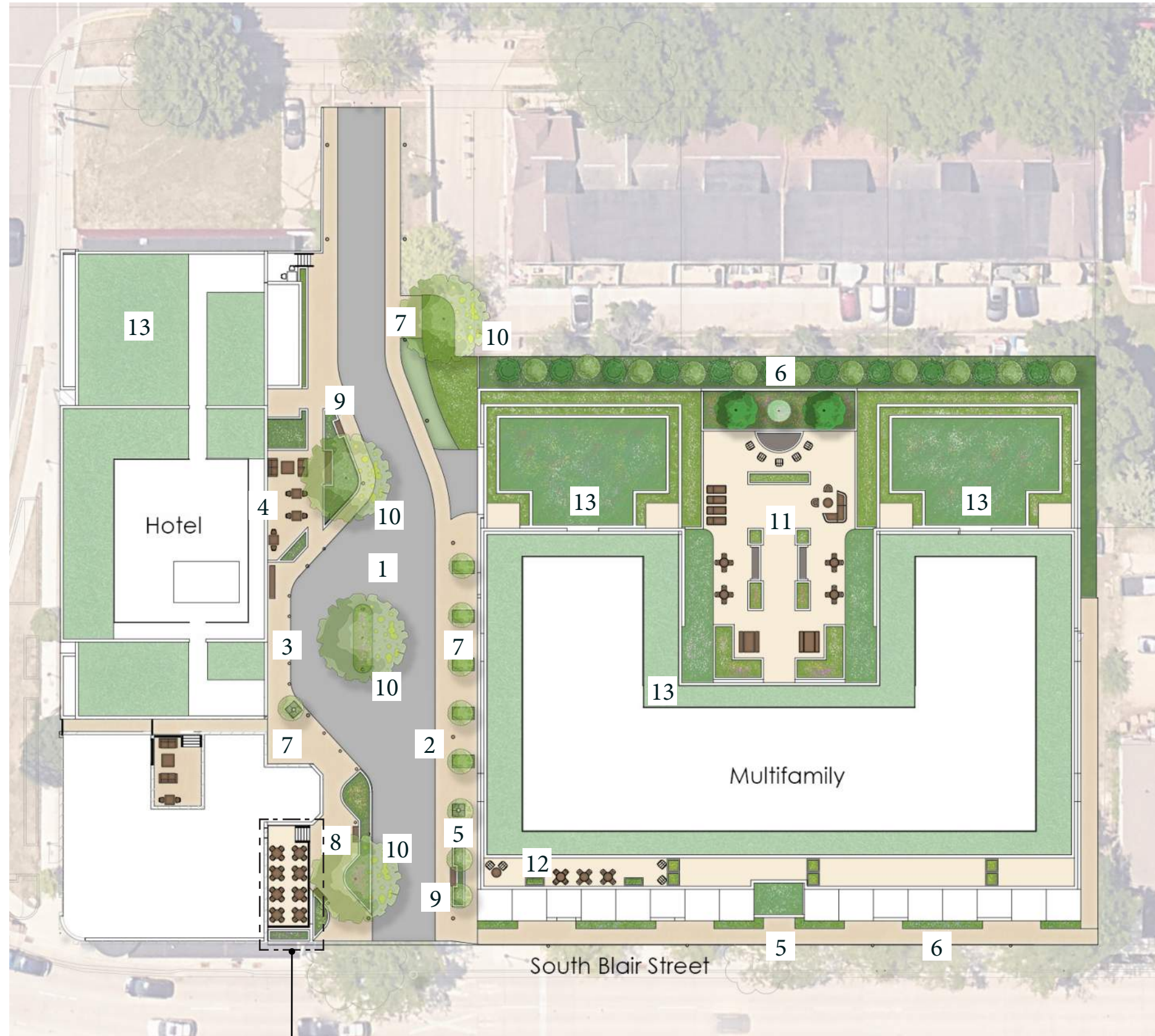
PLANT SCHEDULE ROOF

CODE	BOTANICAL / COMMON NAME	ROOT COND.	SIZE	QTY
DECIDUOUS TREES				
Ov	Ostrya virginiana / American Hophornbeam	B & B	2.5' Cal	2
UNDERSTORY TREES				
Al	Amelanchier laevis / Allegheny Serviceberry	B & B	4" ht.	1
DECIDUOUS SHRUBS				
As2	Amelanchier stolonifera / Running Serviceberry	Cont.	2 Gal.	61
Am	Aronia melanocarpa / Black Chokeberry	Cont.	5 Gal.	4
Ag	Aronia melanocarpa 'UCONNA6012' / Ground Hug® Black Chokeberry	Cont.	2 Gal.	34
Co2	Cephalanthus occidentalis / Buttonbush	Cont.	5 Gal.	2
Ca4	Corylus americana / American Hazelnut	Cont.	5 Gal.	2
PERENNIALS				
Ac3	Anemone canadensis / Canadian Anemone	Cont.	Frit	11
Ey	Eryngium yuccifolium / Rattlesnake Master	Cont.	1 Gal.	8
Lp	Liatris pycnostachya / Gayfeather	Cont.	1 Gal.	6
Pv	Panicum virgatum / Switch Grass	Cont.	1 Gal.	10
Rf	Rudbeckia fulgida / Coneflower	Cont.	1 Gal.	6
Rf-2	Rudbeckia fulgida 'Little Goldstar' / Little Goldstar Coneflower	Cont.	1 Gal.	24
Ss	Schizachyrium scoparium / Little Bluestem	Cont.	1 Gal.	14
Sh	Sporobolus heterolepis / Prairie Dropseed	Cont.	1 Gal.	46

GREEN ROOF PLANT SCHEDULE

4" PRE-GROWN SEDUM TRAY SYSTEM	5,685 sf TOTAL
GREEN ROOF 8" TYPE 1	3,142 sf TOTAL
Anemone canadensis / Canadian Anemone	146 PLUGS
Bouteloua curtipendula / Side Oats Grama	588 PLUGS
Carex bicknellii / Prairie Sedge	1,102 PLUGS
Coreopsis palmata / Stiff Tickseed	220 PLUGS
Dalea purpurea / Purple Prairie Clover	220 PLUGS
Eragrostis spectabilis / Purple Lovegrass	588 PLUGS
Geum triflorum / Prairie Smoke	294 PLUGS
Heuchera richardsonii / Prairie Alum Root	146 PLUGS
Koeleria macrantha / Prairie Junegrass	734 PLUGS
Liatris aspera / Rough Blazing Star	294 PLUGS
Monarda punctata / Spotted Horsemint	146 PLUGS
Rudbeckia fulgida / Coneflower	146 PLUGS
Schizachyrium scoparium / Little Bluestem	588 PLUGS
Sedum ternatum / Wild Stonecrop	882 PLUGS
Sporobolus heterolepis / Prairie Dropseed	1,248 PLUGS
GREEN ROOF 8" TYPE 2	910 sf TOTAL
Allium cernuum / Nodding Onion	212 PLUGS
Anemone canadensis / Canadian Anemone	170 PLUGS
Asclepias verticillata / Whorled Milkweed	64 PLUGS
Carex bicknellii / Prairie Sedge	680 PLUGS
Koeleria macrantha / Prairie Junegrass	318 PLUGS
Sporobolus heterolepis / Prairie Dropseed	680 PLUGS
GREEN ROOF 6" TYPE 1	149 sf TOTAL
Anemone canadensis / Canadian Anemone	52 PLUGS
Carex albicans / White-tinged Sedge	157 PLUGS
Carex jamesii / James' Sedge	52 PLUGS
Carex pensylvanica / Pennsylvania Sedge	87 PLUGS
GREEN ROOF 24" TYPE 1	1,908 sf TOTAL
Allium cernuum / Nodding Onion	358 PLUGS
Carex bicknellii / Prairie Sedge	2,855 PLUGS
Dalea purpurea / Purple Prairie Clover	358 PLUGS
Sporobolus heterolepis / Prairie Dropseed	894 PLUGS
GREEN ROOF 24" TYPE 2	60 sf TOTAL
Calline involucrata / Purple Poppymallow	28 PLUGS
Geum triflorum / Prairie Smoke	78 PLUGS
Ruellia humilis / Wild Petunia	36 PLUGS
GREEN ROOF 24" TYPE 3	356 sf TOTAL
Carex breviflora / Oval Sedge	167 PLUGS
Eragrostis spectabilis / Purple Lovegrass	167 PLUGS
Koeleria macrantha / Prairie Junegrass	125 PLUGS
Sporobolus heterolepis / Prairie Dropseed	376 PLUGS
GREEN ROOF 48" TYPE 1	533 sf TOTAL
Asclepias tuberosa / Butterfly Milkweed	87 PLUGS
Bouteloua curtipendula / Side Oats Grama	187 PLUGS
Carex bicknellii / Prairie Sedge	436 PLUGS
Coreopsis palmata / Stiff Tickseed	100 PLUGS
Koeleria macrantha / Prairie Junegrass	150 PLUGS
Liatris pycnostachya / Gayfeather	100 PLUGS
Schizachyrium scoparium / Little Bluestem	187 PLUGS

RENDERED LANDSCAPE PLAN



- 1 - DECORATIVE CONCRETE DRIVE AISLE
- 2 - DECORATIVE CONCRETE SIDEWALKS
- 3 - HOTEL ENTRANCE
- 4 - HOTEL OUTDOOR SEATING AREA
- 5 - RESIDENTIAL ENTRANCE
- 6 - LANDSCAPE STRIP
- 7 - BIKE RACKS
- 8 - BENCH
- 9 - RAISED PLANTERS
- 10 - SHADE OR ORNAMENTAL TREE
- 11 - PODIUM DECK WITH BBQ STATIONS AND SEATING/LOUNGING
- 12 - ROOF DECK WITH PLANTERS AND SEATING
- 13 - GREEN ROOFS

(NEW DECK STRUCTURE INTENDED FOR FUTURE SUBMITTAL)

SITE MATERIALS



LIGHT BOLLARD



BIKE RACK



WOOD SLAT BENCHES
SMOOTH CONCRET PLANTERS



TREE GRATE

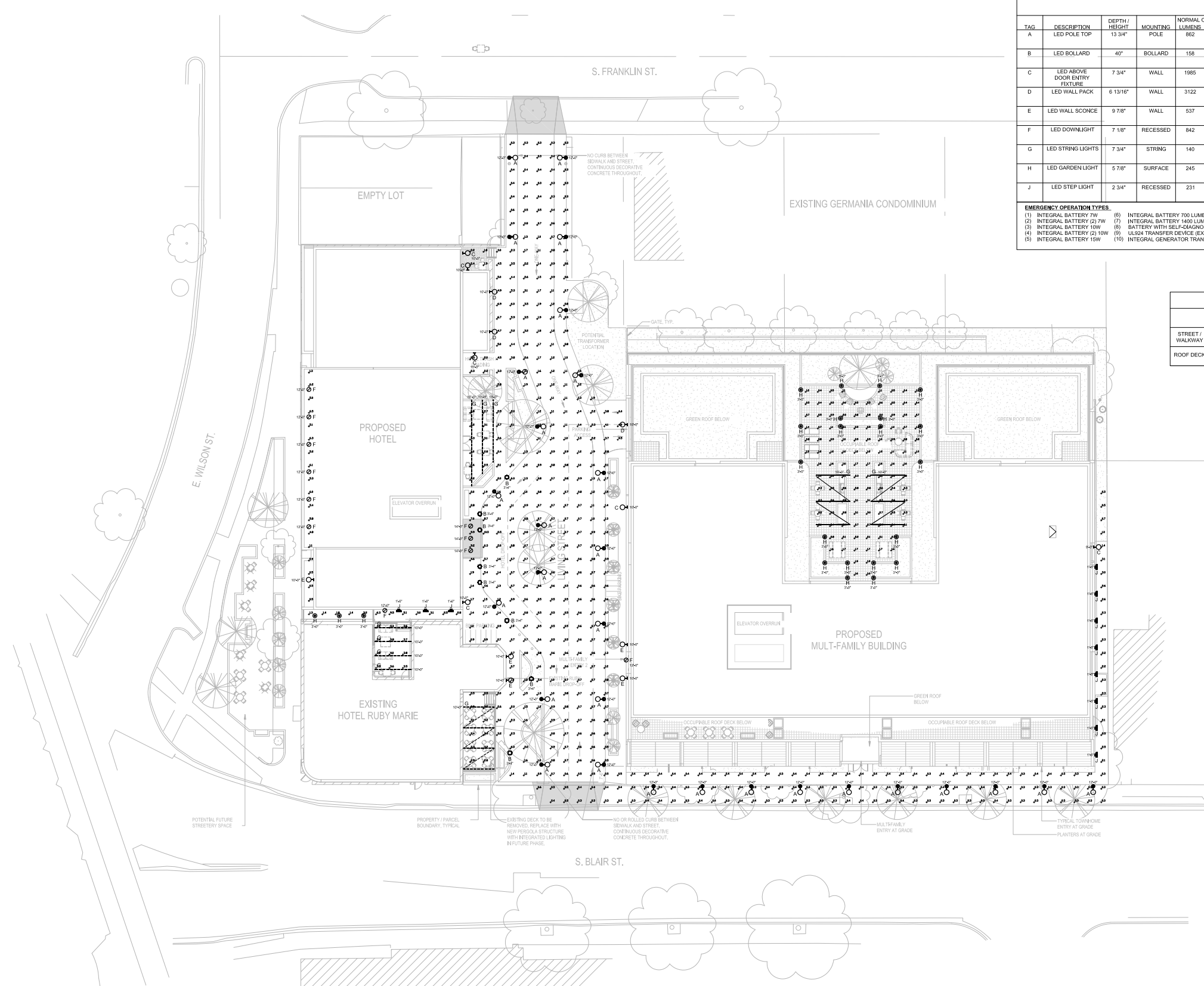


WALKING SURFACE
SMALL SCALE RUNNING BOND PATTERN



DRIVE ISLE
LARGE SCALE RUNNING BOND PATTERN

PHOTOMETRIC PLAN




LUMINAIRE SCHEDULE															
TAG	DESCRIPTION	DEPTH / HEIGHT	MOUNTING	NORMAL OPERATION LUMENS	OPERATION WATTS	EMERGENCY OPERATION LUMENS	EMERGENCY OPERATION WATTS	TYPE	VOLTAGE	COLOR TEMP(K)	C.R.I. (Min)	DIMMING	FINISH	MANUFACTURER	MODEL SERIES
A	LED POLE TOP	13.34"	POLE	862	13	-	-	-	120-277	3000	80	0-10V 10%	BRONZE	BEGA	84 035
B	LED BOLLARD	40"	BOLLARD	158	20	-	-	-	120-277	3000	80	0-10V 10%	STAINLESS STEEL	HELIO	LBHLO-603
C	LED ABOVE DOOR ENTRY FIXTURE	7.34"	WALL	1965	20.1	-	-	-	120-277	3000	80	0-10V 10%	BRONZE	COOPER	EMC
D	LED WALL PACK	6.13/16"	WALL	3122	28.5	-	-	-	120-277	3000	80	0-10V 10%	BRONZE	INVUE	CCW
E	LED WALL SCIENCE	9.78"	WALL	537	11	-	-	-	120-277	3000	80	0-10V 10%	BRONZE	BEGA	B31218
F	LED DOWNLIGHT	7.18"	RECESSED	842	7.87	-	-	-	120-277	3000	80	0-10V 10%	BLACK	JUNO	L6
G	LED STRING LIGHTS	7.34"	STRING	140	25	-	-	-	120-277	3000	80	0-10V 10%	BLACK	PLT	12131
H	LED GARDEN LIGHT	5.78"	SURFACE	245	2.5	-	-	-	120-277	3000	80	0-10V 10%	BLACK	BEGA	55 030
J	LED STEP LIGHT	2.34"	RECESSED	231	6	-	-	-	120-277	3000	80	0-10V 10%	BLACK	BEGA	33 053

EMERGENCY OPERATION TYPES	INTEGRATED CONTROL TYPES	INTEGRATED SENSOR TYPES	GENERAL NOTES:
(1) INTEGRAL BATTERY 7W (2) INTEGRAL BATTERY (2) 7W (3) INTEGRAL BATTERY 10W (4) INTEGRAL BATTERY (2) 10W (5) INTEGRAL BATTERY 15W	(6) INTEGRAL BATTERY 700 LUMEN (7) INTEGRAL BATTERY 1400 LUMEN (8) BATTERY WITH SELF-DIAGNOSTICS (9) UL524 TRANSFER DEVICE (EXTERNAL OR INTERNAL) (10) INTEGRAL GENERATOR TRANSFER DEVICE	(1) WIRELESS - CAT 5e (2) WIRELESS - CAT 6 (3) WIRELESS	(1) PASSIVE INFRARED (2) ULTRASONIC (3) DUAL TECHNOLOGY (PIR+ULTRASONIC) (4) DIMMING PHOTOCELL

PHOTOMETRIC STATISTICS					
	AVERAGE	MAXIMUM	MINIMUM	MAX:MIN	AVG:MIN
STREET / WALKWAY	1.5 fc	10.5 fc	0.3 fc	35.0 : 1	5.0 : 1
ROOF DECK	1.6 fc	3.1 fc	0.4 fc	7.8 : 1	4.0 : 1

LIGHTING SELECTIONS

GARDEN LIGHTS



Quick-Luminaire
with Luminaire Light

A series of luminaires with earthy tones in three different outdoor scenes, outdoor and indoor with use. In paths, flowerbeds and on terraces these ornamental luminaires create a pleasant lighting effect. The earthy tones provide a sense of coziness and provide illumination. Reinforced polycarbonate. Three 1/2 inch glass.

LED color temperature: 2700K, 3000K, 3500K, 4000K


BECA luminaires offer a minimum service life of 50,000 hours, with suitable LED replacement modules guaranteed for up to 20 years after date of purchase. Further LED technical data including luminaire flux, CRI, dimming and electrical characteristics are provided on the individual luminaire specification sheets, available at www.bega.com

Dimmable housing provided in standard BECA Graphics. Custom colors not available.

NOTE: Meets to North American standards. Suitable for wet locations. Protection class IP 65.

Quick-Luminaire	Options	Wattage	Beam angle	Height	Weight
2000	with earth tone	12W	2.5°	12.5"	7.2"
2000	with earth tone	12W	2.5°	12.5"	7.2"
2000	with earth tone	12W	2.5°	12.5"	7.2"

POLE LIGHTS AND BUILDING SCONCES



Wall Luminaire - Pole-top luminaire

A series of contemporary wall and pole-top luminaires with controlled light distribution. A combination of materials in perfect harmony with the modern luminaire design. White or single luminaire or arranged in groups. These luminaires are perfect architectural elements.

Clear acrylic and copper. Three 1/2 inch glass.

LED color temperature: 2700K, 3000K, 3500K, 4000K

BECA luminaires offer a minimum service life of 50,000 hours, with suitable LED replacement modules guaranteed for up to 20 years after date of purchase. Further LED technical data including luminaire flux, CRI, dimming and electrical characteristics are provided on the individual luminaire specification sheets, available at www.bega.com


Natural bronze and copper. Tone and weather factors will create the natural patina of brass over time.

NOTE: Meets to North American standards. Suitable for wet locations. Protection class IP 65.

In the table are compatible BECA luminaire pole made of copper with suitable LED replacement modules. A complete table including technical data of all BECA poles and armatures units is given on page 102 - 103.

Wall Luminaire	Options	Wattage	Beam angle	Height	Weight
2000	with earth tone	12W	2.5°	12.5"	7.2"
2000	with earth tone	12W	2.5°	12.5"	7.2"
2000	with earth tone	12W	2.5°	12.5"	7.2"

STEP LIGHTS



Recessed wall luminaires
Appropriate for asymmetric wide spread distribution.

For decades, BECA has set the standard for recessed wall luminaires worldwide. Thanks to the high quality of the materials and the precision of the manufacturing process, BECA recessed wall luminaires are a reliable and long-lasting lighting solution. This new approach to recessed wall luminaires.

Recessed wall luminaires with earthy tones in three different outdoor scenes, outdoor and indoor with use. In paths, flowerbeds and on terraces these ornamental luminaires create a pleasant lighting effect. The earthy tones provide a sense of coziness and provide illumination. Reinforced polycarbonate. Three 1/2 inch glass.

LED color temperature: 2700K, 3000K, 3500K, 4000K

BECA luminaires offer a minimum service life of 50,000 hours, with suitable LED replacement modules guaranteed for up to 20 years after date of purchase. Further LED technical data including luminaire flux, CRI, dimming and electrical characteristics are provided on the individual luminaire specification sheets, available at www.bega.com


Natural bronze and copper. Tone and weather factors will create the natural patina of brass over time.

NOTE: Meets to North American standards. Suitable for wet locations. Protection class IP 65.

Recessed wall luminaire	Options	Wattage	Beam angle	Height	Weight
2000	with earth tone	12W	2.5°	12.5"	7.2"
2000	with earth tone	12W	2.5°	12.5"	7.2"
2000	with earth tone	12W	2.5°	12.5"	7.2"

SITE LIGHTING

STRING LIGHTS



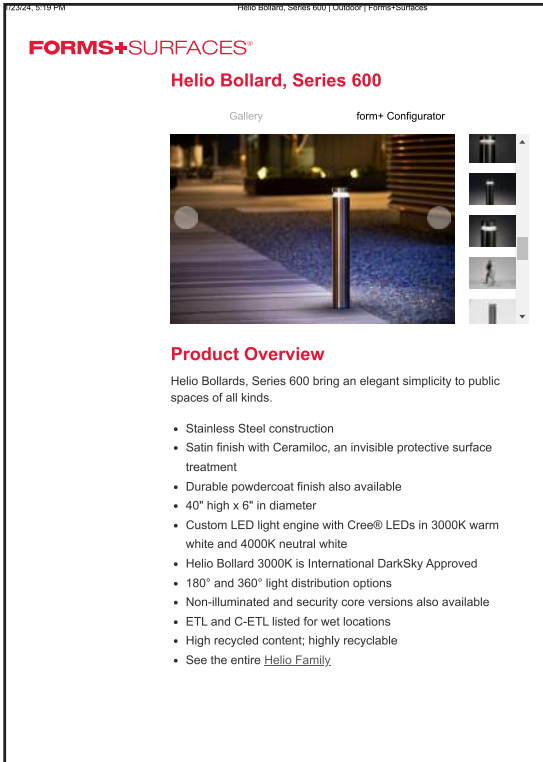
1000Bulbs

Home / Christmas Lights - Indoor and Outdoor String Lights (category/christmas-lights) / String Lights and Outdoor Patio Lights (category/outdoor-light-strings) / Patio Light Stringers (category/patio-light-stringers)

PLT ★★★★★ 5.0 (23) [Write a review](#)

100 ft. Patio Stringer - (48) Medium Base Sockets
Black Wire - 24 in. Socket Spacing - Male to Female Plug Connection - PLTS-12131

BOLLARDS



FORMS+SURFACES

Helio Bollard, Series 600

Gallery form+ Configurator

Product Overview

Helio Bollards, Series 600 bring an elegant simplicity to public spaces of all kinds.

- Stainless Steel construction
- Satin finish with Ceramiloc, an invisible protective surface treatment
- Durable powdercoat finish also available
- 40" high x 6" in diameter
- Custom LED light engine with Cree® LEDs in 3000K warm white and 4000K neutral white
- Helio Bollard 3000K is International DarkSky Approved
- 180° and 360° light distribution options
- Non-illuminated and security core versions also available
- ETL and C-ETL listed for wet locations
- High recycled content; highly recyclable
- See the entire [Helio Family](#).

ENTRY LIGHTS



COOPER Lighting Solutions

ENC Entri Round Clean LED

- One-piece, die-cast aluminum housing and door
- Flush mounted die-cast tool-less latch for ease of maintenance
- Choice of eleven LED optical distributions
- Fits 4" j-box and secured via two concealed stainless steel fasteners
- Offered with optional uplight and colored or clear luminous window
- Aluminum adapter box for egress and thru-way wiring module withstands 10KV transient line surge (LED)
- CRI/CCT options within 5-step MacAdam ellipse

WALL PACKS




COOPER Lighting Solutions

CCW ClearCurve Wall

- Available in Visual Comfort or Discrete optics configurations
- Lumen packages from 1,600 to 12,000 lumens (18W - 116W)
- Efficacy up to 149 lumens per watt
- 4 WaveStream visual comfort distributions (T2, T3, T4FT, T4W)
- 9 LightSquare distributions (1 or 2 square configurations)

BUILDING LIGHTING

HOTEL DECORATIVE FACADE LIGHTS



5 inch
3.5 inch
4.4 inch
5.9 inch

- This wall washer light adopts a stylish and simple appearance design, which adds a modern sense to the building wall, presents a unique lighting effect when lighting, and creates a warm and beautiful atmosphere.
- This waterproof aluminum outdoor spotlight wall light dissipates heat quickly, and is rustproof and durable. It is used with an optical lens, the light has a long range and high quality.
- And with bottom fixing bracket design, our outdoor wall lights are beautiful and sturdy, and easy to install.

DETAILS

Product Name:	LED Spotlight Outdoor Wall Lights
Style:	Retro, Modern, Nordic
Lamp Color:	Gray
Material:	Die Cast Aluminum, Tempered Glass
Light Source:	LED
Light Color:	White Light, Golden Yellow Light, Warm White Light
Watts:	24W
Voltage:	110-220V
Power Supply:	Hardwired
Waterproof:	IP65
Lighting Distance:	Recommend Lighting 1-10 Meters
Craft:	Polishing, Grinding
Applicable Scene:	Outdoor, Hotel, Building, Exterior, Other

WEIGHTS & DIMENSIONS

Weight:	2.20lb
Size:	5.9" Width x 4.4" Depth x 3.5" Height

DEAL
Buy More Save More!
Buy Set of 2 Get 10% Off
Buy Set of 4 Get 15% Off
Buy Set of 6 Get 20% Off
Buy Set of 8 Get 30% Off
Contact Us for 20 pieces above to get special offer!

NOTE
1 in = 2.54 cm; 1 cm = 0.39 in
*Should you require any further information about our products and services, feel free to [Contact Us](#).

GROUND VIEW OF LIVING STREET LOOKING SOUTHWEST



GROUND VIEW OF LIVING STREET LOOKING NORTHEAST



Kahler Slater

Milwaukee | Madison | Chicago | Richmond

www.kahlerslater.com