

Paratransit Service – Draft Plan

Draft Paratransit Boundary Map on Page 2

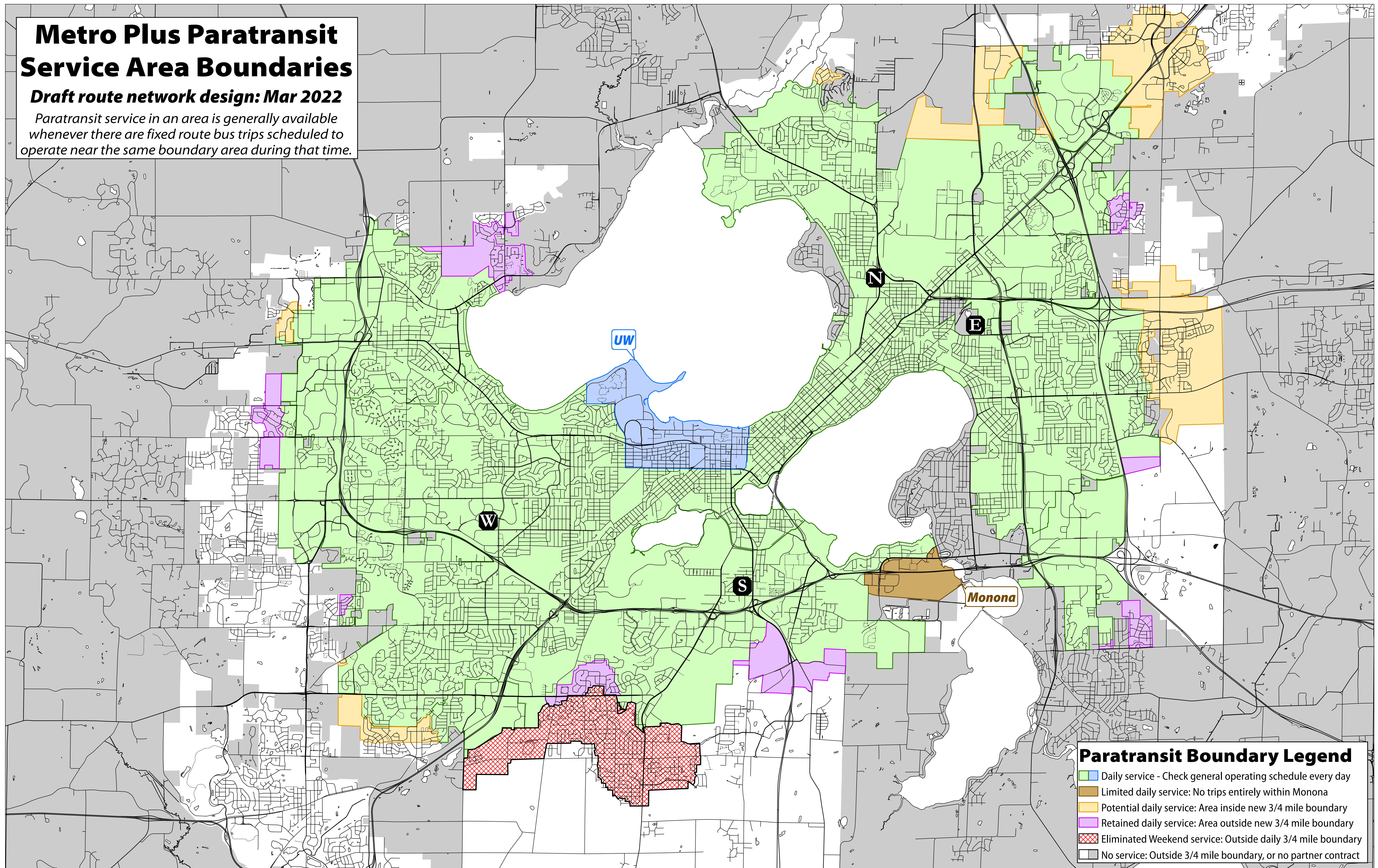
Weekday paratransit boundaries will either remain the same or be expanded depending on the final system design. If riders currently receive weekday paratransit service, they will continue to receive weekday paratransit service after the redesign.

The paratransit boundary map (page 2) is based upon the service boundaries of the current draft network plan. Areas marked in yellow on the map are areas that will potentially have new, added daily paratransit service with this plan. The area marked in red is the only area that would see a removal of service. Currently, Metro provides weekend only service in that area of the City of Fitchburg (south of McKee Road) - this weekend service would be eliminated.

Metro Plus Paratransit Service Area Boundaries

Draft route network design: Mar 2022

Paratransit service in an area is generally available whenever there are fixed route bus trips scheduled to operate near the same boundary area during that time.



Paratransit Boundary Legend

- Daily service - Check general operating schedule every day
- Limited daily service: No trips entirely within Monona
- Potential daily service: Area inside new 3/4 mile boundary
- Retained daily service: Area outside new 3/4 mile boundary
- Eliminated Weekend service: Outside daily 3/4 mile boundary
- No service: Outside 3/4 mile boundary, or no partner contract