

Time: 4/24/2018 6:47:42 AM

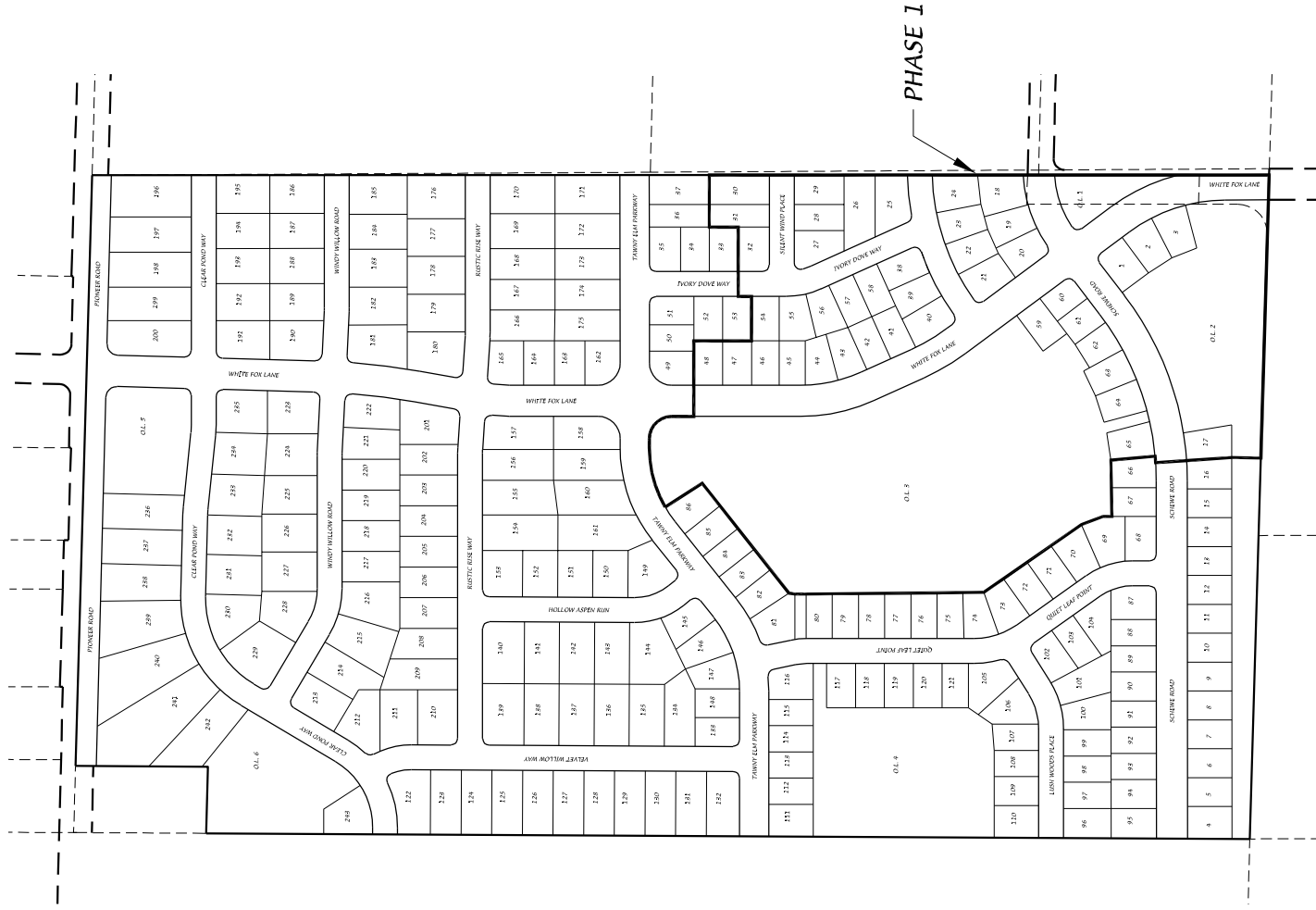
Session: C:\GTViewer_Sessions\Deming & Fourier SW.gts

City of Madison, WI - GIS/Mapping data

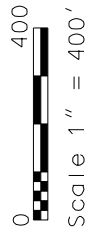
Printed By: entnt

Disclaimer: The City makes no representation about the accuracy of these records and shall not be liable for any damages

Eagle Trace Phase Map



D'ONOFRIO KOTTKE AND ASSOCIATES, INC.
 7530 Westward Way, Madison, WI 53717
 Phone: 608.833.7530 • Fax: 608.833.1089
YOUR NATURAL RESOURCE FOR LAND DEVELOPMENT



DATE: 04-23-18
 F.N.: 17-05-145
 REV.

DRAWN BY:

PROPOSED 12" DEPRESSION ZONE INFILTRATION BASIN
 5,750 SQFT @ 1144.00
 (TOP OF BERM) @ 1149.00

OUTLET STRUCTURES:
 24" CULVERT @ 1145.00
 10" OVERFLOW WEIR @ 1148.00
 6" EMERGENCY DRAIN CAPPED @ 1144.00

PROPOSED DETENTION BASIN
 TOP OF POND BERM -1113.00 AREA = 42,591 SQFT
 TOP OF WET POND/OUTLET - 1108.00, AREA = 25,902 SQFT
 BOTTOM OF WET POND - 1102.00

OUTLET STRUCTURES:
 24" STANDPIPE, RIM = 1110.50, 6" ORIFICE @ 1108.00,
 18" OUTLET PIPE @ 1108.00

20' OVERFLOW WEIR ROUTED TO INFILT. BASIN @ 1111.00
 150' OVERFLOW WEIR ROUTED TO INFILT. BASIN @ 1112.70

PERMANENT WATER ELEVATION @ 1108.00

PROPOSED 12" DEPRESSION ZONE INFILTRATION BASIN
 9,500 SQFT @ 1107.00
 SQFT (TOP OF BERM) @ 1113.00

OUTLET STRUCTURES:
 24" CULVERT @ 1108.00
 2" OVERFLOW WEIR @ 1111.00
 6" EMERGENCY DRAIN CAPPED @ 1107.00

PERMANENT WATER ELEVATION @ 1145.00

PROPOSED DETENTION BASIN
 TOP OF POND BERM -1149.00 AREA = 13,572 SQFT
 TOP OF WET POND/OUTLET - 1145.00, AREA = 6,998 SQFT
 BOTTOM OF WET POND - 1139.00

OUTLET STRUCTURES:
 24" STANDPIPE, RIM = 1147.50, 3" ORIFICE @ 1145.00,
 12" OUTLET @ 1145.00

100' OVERFLOW WEIR ROUTED TO INFILT. BASIN @ 1148.00

PROPOSED 12" DEPRESSION ZONE INFILTRATION BASIN
 6,300 SQFT @ 1123.00
 (TOP OF BERM) @ 1128.00

OUTLET STRUCTURES:
 24" CULVERT @ 1124.00
 10" OVERFLOW WEIR @ 1127.00
 6" EMERGENCY DRAIN CAPPED @ 1123.00

PERMANENT WATER ELEVATION @ 1124.00

PROPOSED DETENTION BASIN
 TOP OF POND BERM -1128.00 AREA = 14,621 SQFT
 TOP OF WET POND/OUTLET - 1124.00, AREA = 8,200 SQFT
 BOTTOM OF WET POND - 1118.00

OUTLET STRUCTURES:
 24" STANDPIPE, RIM = 1126.40, 3" ORIFICE @ 1124.00,
 12" OUTFLOW PIPE @ 1124.00

90' OVERFLOW WEIR ROUTED TO INFILT. BASIN @ 1127.00

PROPOSED 12" DEPRESSION ZONE INFILTRATION BASIN
 25,000 SQFT @ 1100.00
 43,908 (TOP OF BERM) @ 1106.00

OUTLET STRUCTURES:
 36" CULVERT @ 1101.00
 15" OVERFLOW WEIR @ 1104.00
 6" EMERGENCY DRAIN CAPPED @ 1100.00

PERMANENT WATER ELEVATION @ 1101.00

PROPOSED DETENTION BASIN
 TOP OF POND BERM -1106.00 AREA = 40,171 SQFT
 TOP OF WET POND/OUTLET - 1101.00, AREA = 23,752 SQFT
 BOTTOM OF WET POND - 1095.00

OUTLET STRUCTURES:
 24" STANDPIPE, RIM = 1104.25, 5" ORIFICE @ 1101.00,
 12" OUTLET PIPE @ 1101.00

160' OVERFLOW WEIR ROUTED TO INFILT. BASIN @ 1104.50



D'ONFRID KOTTKE AND ASSOCIATES, INC.
 7530 Westward Way, Madison, WI 53717
 Phone: 608.833.7530 • Fax: 608.833.1089
 YOUR NATURAL RESOURCE FOR LAND DEVELOPMENT

BASIN LAYOUT PLAN
EAGLE TRACE
 CITY OF MADISON, WISCONSIN



0 300

DATE: 04/09/18
 REVISED:

DRAWN BY: GVP

FN: 17-04-105

Sheet Number:
 Exhibit 5