



**foodshed  
partnership**

*Produce for the People*

# OVERVIEW

The Foodshed Partnership will function as an aggregation, processing, and storage hub for local farmers, focusing on historically marginalized and underserved producers who lack infrastructure and access to wholesale markets. The Foodshed Partnership will utilize a climate adaptive and equity-centered framework to build a more resilient local food system for all.

# THE PARTNERSHIP

community**action**coalition  
FOR SOUTH CENTRAL WISCONSIN



PASTURE AND PLENTY



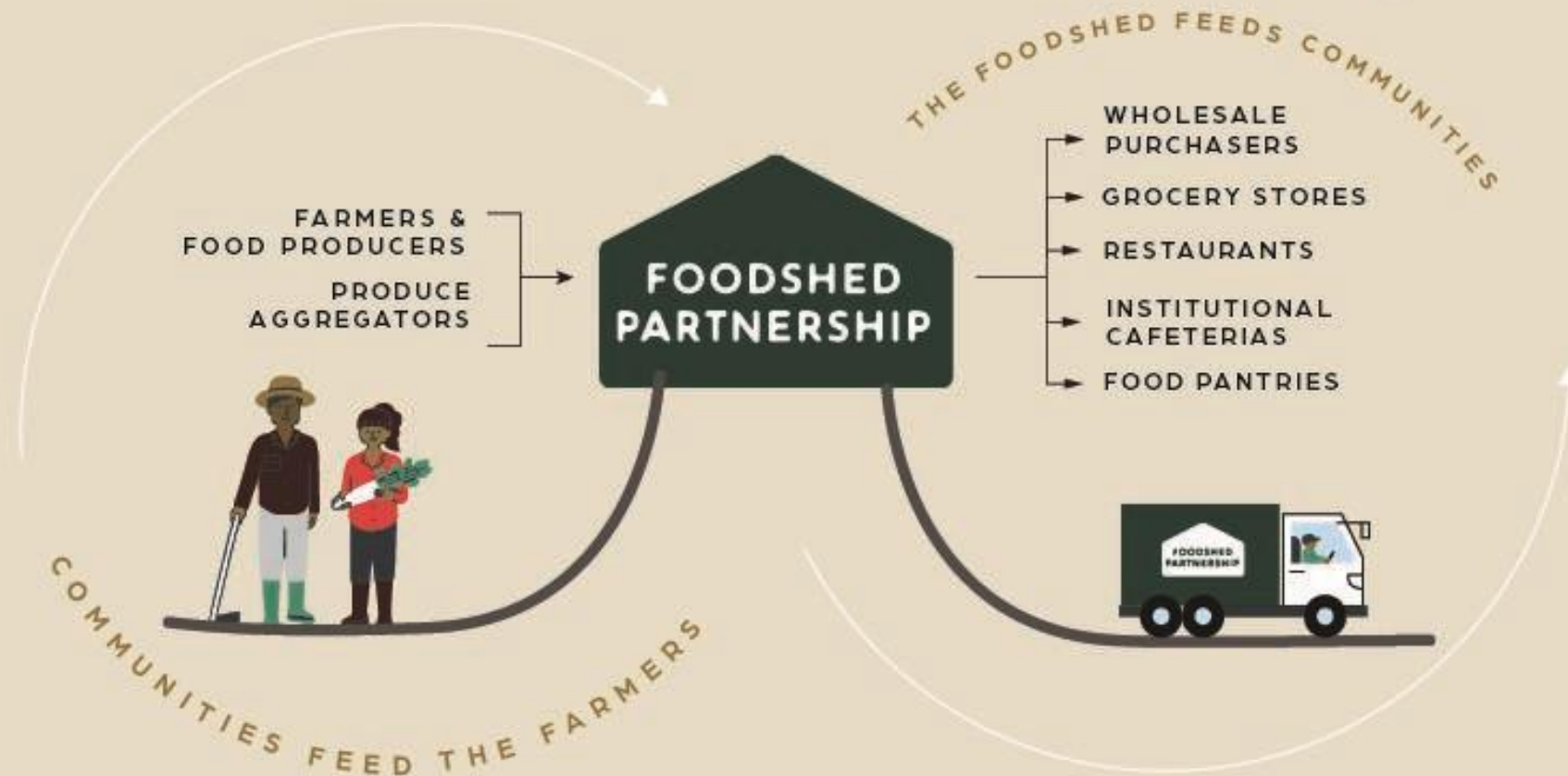
**FAIRSHARE**  
CSA COALITION



**foodshed  
partnership**



# Produce for the People



**Connect & Educate Farmers**

SUPPORTED BY  
REAP AND FAIRSHARE



**Aggregate, Process & Create**

**Value-added Products**  
SUPPORTED BY CACSCW  
PASTURE AND PLENTY



**Distribute & Expand Markets**

ACROSS MIDWEST

# OUR FACILITY

- Currently we have a 10,000 square foot warehouse
- Transportation: 3 trucks, reefer trucks and sprinter van
- Racking, Dry Storage, Cooler/Freezer Storage
- Cross-docking capacity



# IMPACT

This facility will expand the capacity of the middle tier of the local food system to deliver convenient, minimally processed produce, un-processed produce, and ready-to-eat food made with local, seasonal ingredients year-round. This will allow for increased purchasing and distribution of local foods through businesses and food pantries.

# PANTRY BENEFITS

In 2023, CAC's partner food pantries received over 672,000 visits. This is a massive potential consumer base for foods donated to pantries through our Foodshed Partnership services. Residents of Dane, Jefferson, and Waukesha counties collectively require an additional \$37,895,000 worth of food to adequately meet the needs of food-insecure households.\*

\*According to Feeding America's 2021 Map the Meal Gap report





## COMMUNITY BENEFITS

Ultimately, the Dane, Jefferson, and Waukesha County communities are the main beneficiaries of the Foodshed's improvements to the food system. The Foodshed will diversify the products available within our local food supply network, create good jobs, and reduce waste in our landfills.







**foodshed  
partnership**

*Produce for the People*

*Questions?*

# Contact Us

**Meghan Mietchen**

Community Action Coalition |  
Executive Director  
(608) 230-7058  
meghanm@cacscw.org

**Christy McKenzie**

Pasture and Plenty | Owner  
(608) 347-9300  
christy@madlocalfood.com

**Noah Bloedorn**

REAP | Food Plan Manager  
noahb@reapfoodgroup.org

**Philip Kauth**

REAP | Executive Director  
(608) 310-7836  
philk@reapfoodgroup.org

**Rachael Maysels**

FairShare CSA Coalition | Executive Director  
(608) 226-0300  
Rachael@csacoalition.org

---