



1 North  
A-2.1 3/32" = 1'-0"



2 West  
A-2.1 3/32" = 1'-0"

EXTERIOR MATERIAL SCHEDULE		
BUILDING ELEMENT	MANUFACTURER	COLOR
COMPOSITE LAP SIDING - (#1) - 4"	JAMES HARDIE	SLATE GRAY
COMPOSITE PANEL SIDING - (#2)	JAMES HARDIE	SW 7585 SUN DRIED TOMATO
COMPOSITE LAP SIDING - (#3-S) - ALT WIDTH	JAMES HARDIE	PEARL GRAY
COMPOSITE PANEL SIDING - (#3-P)	JAMES HARDIE	PEARL GRAY
COMPOSITE TRIM - (#T1)	JAMES HARDIE	SLATE GRAY
COMPOSITE TRIM - (#T2)	JAMES HARDIE	SW 7585 SUN DRIED TOMATO
COMPOSITE TRIM - (#T3)	JAMES HARDIE	PEARL GRAY
MODULAR BRICK VENEER	N/A	MATCH EXISTING
COMPOSITE WINDOWS	TBD	BLACK
ALUM. STOREFRONT	N/A	BLACK
METAL DOORS/FRAMES	N/A	BLACK
STONE SILLS & BANDS	EDWARDS	18-031
SOFFITS	N/A	CITY SCAPE
RAILINGS	SUPERIOR	BLACK



**knothe + bruce**  
ARCHITECTS

knothebruce.com 608.836.3690  
7601 University Ave. • Suite 201 • Middleton, WI 53562

KEY PLAN



1 South  
A-2.2 3/32" = 1'-0"

ISSUED  
Issued for Land Use Submittal - July 27, 2020



2 East  
A-2.2 3/32" = 1'-0"

PROJECT TITLE  
**LUCKY'S 1313  
EXPANSION**

1313 REGENT ST.  
MADISON, WI  
SHEET TITLE  
**EXTERIOR  
ELEVATIONS**

SHEET NUMBER

**A-2.2**

PROJECT NUMBER 1916

© Knothe & Bruce Architects, LLC

EXTERIOR MATERIAL SCHEDULE		
BUILDING ELEMENT	MANUFACTURER	COLOR
COMPOSITE LAP SIDING - (#1) - 4"	JAMES HARDIE	SLATE GRAY
COMPOSITE PANEL SIDING - (#2)	JAMES HARDIE	SW 7585 SUN DRIED TOMATO
COMPOSITE LAP SIDING - (#3-S) - ALT WIDTH	JAMES HARDIE	PEARL GRAY
COMPOSITE PANEL SIDING - (#3-P)	JAMES HARDIE	PEARL GRAY
COMPOSITE TRIM - (#T1)	JAMES HARDIE	SLATE GRAY
COMPOSITE TRIM - (#T2)	JAMES HARDIE	SW 7585 SUN DRIED TOMATO
COMPOSITE TRIM - (#T3)	JAMES HARDIE	PEARL GRAY
MODULAR BRICK VENEER	N/A	MATCH EXISTING
COMPOSITE WINDOWS	TBD	BLACK
ALUM. STOREFRONT	N/A	BLACK
METAL DOORS/FRAMES	N/A	BLACK
STONE SILLS & BANDS	EDWARDS	18-031
SOFFITS	N/A	CITY SCAPE
RAILINGS	SUPERIOR	BLACK





1 North - Rendered Elevation  
A-2.3 3/32" = 1'-0"

ISSUED  
Issued for Land Use Submittal - July 27, 2020



2 West - Rendered Elevation  
A-2.3 3/32" = 1'-0"

PROJECT TITLE  
**LUCKY'S 1313  
EXPANSION**

1313 REGENT ST.  
MADISON, WI

SHEET TITLE  
**RENDERED  
EXTERIOR  
ELEVATIONS**

SHEET NUMBER

**A-2.3**

PROJECT NUMBER 1916

© Knothe & Bruce Architects, LLC

EXTERIOR MATERIAL SCHEDULE		
BUILDING ELEMENT	MANUFACTURER	COLOR
COMPOSITE LAP SIDING - (#1) - 4"	JAMES HARDIE	SLATE GRAY
COMPOSITE PANEL SIDING - (#2)	JAMES HARDIE	SW 7585 SUN DRIED TOMATO
COMPOSITE LAP SIDING - (#3-S) - ALT WIDTH	JAMES HARDIE	PEARL GRAY
COMPOSITE PANEL SIDING - (#3-P)	JAMES HARDIE	PEARL GRAY
COMPOSITE TRIM - (#T1)	JAMES HARDIE	SLATE GRAY
COMPOSITE TRIM - (#T2)	JAMES HARDIE	SW 7585 SUN DRIED TOMATO
COMPOSITE TRIM - (#T3)	JAMES HARDIE	PEARL GRAY
MODULAR BRICK VENEER	N/A	MATCH EXISTING
COMPOSITE WINDOWS	TBD	BLACK
ALUM. STOREFRONT	N/A	BLACK
METAL DOORS/FRAMES	N/A	BLACK
STONE SILLS & BANDS	EDWARDS	18-031
SOFFITS	N/A	CITY SCAPE
RAILINGS	SUPERIOR	BLACK





1 South - Rendered Elevation  
A-2.4 3/32" = 1'-0"

ISSUED  
Issued for Land Use Submittal - July 27, 2020



2 East - Rendered Elevation  
A-2.4 3/32" = 1'-0"

PROJECT TITLE  
**LUCKY'S 1313  
EXPANSION**

1313 REGENT ST.  
MADISON, WI

SHEET TITLE  
**RENDERED  
EXTERIOR  
ELEVATIONS**

SHEET NUMBER

**A-2.4**

PROJECT NUMBER 1916

© Knothe & Bruce Architects, LLC

EXTERIOR MATERIAL SCHEDULE		
BUILDING ELEMENT	MANUFACTURER	COLOR
COMPOSITE LAP SIDING - (#1) - 4"	JAMES HARDIE	SLATE GRAY
COMPOSITE PANEL SIDING - (#2)	JAMES HARDIE	SW 7585 SUN DRIED TOMATO
COMPOSITE LAP SIDING - (#3-S) - ALT WIDTH	JAMES HARDIE	PEARL GRAY
COMPOSITE PANEL SIDING - (#3-P)	JAMES HARDIE	PEARL GRAY
COMPOSITE TRIM - (#T1)	JAMES HARDIE	SLATE GRAY
COMPOSITE TRIM - (#T2)	JAMES HARDIE	SW 7585 SUN DRIED TOMATO
COMPOSITE TRIM - (#T3)	JAMES HARDIE	PEARL GRAY
MODULAR BRICK VENEER	N/A	MATCH EXISTING
COMPOSITE WINDOWS	TBD	BLACK
ALUM. STOREFRONT	N/A	BLACK
METAL DOORS/FRAMES	N/A	BLACK
STONE SILLS & BANDS	EDWARDS	18-031
SOFFITS	N/A	CITY SCAPE
RAILINGS	SUPERIOR	BLACK



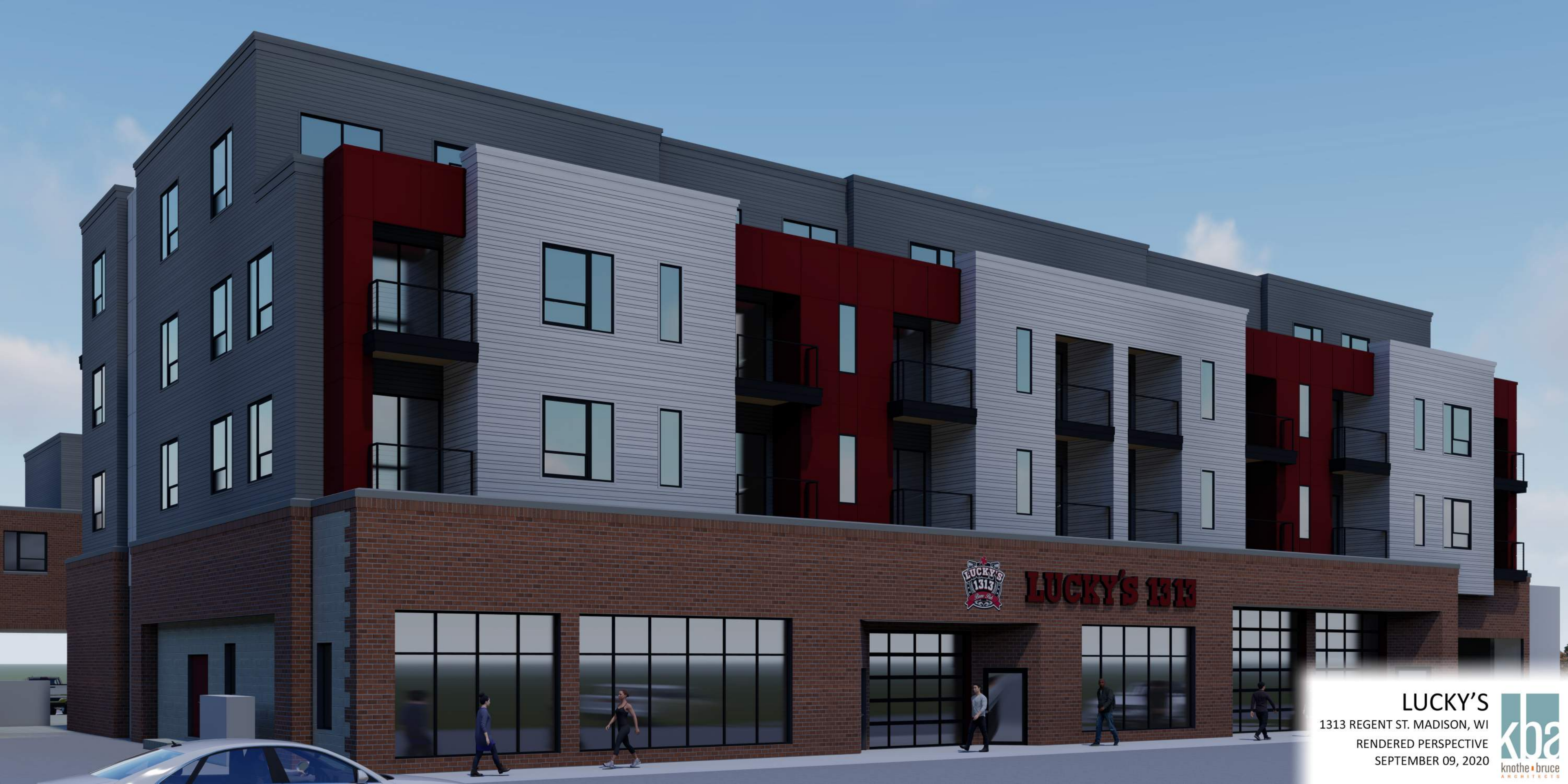


**LUCKY'S 1313**

**LUCKY'S**  
1313 REGENT ST. MADISON, WI  
RENDERED PERSPECTIVE  
SEPTEMBER 09, 2020







**LUCKY'S**  
1313 REGENT ST. MADISON, WI  
RENDERED PERSPECTIVE  
SEPTEMBER 09, 2020







**LUCKY'S**  
1313 REGENT ST. MADISON, WI  
RENDERED PERSPECTIVE  
SEPTEMBER 09, 2020







**LUCKY'S**  
1313 REGENT ST. MADISON, WI  
RENDERED PERSPECTIVE  
SEPTEMBER 09, 2020

