



Early Conceptual Site Options Nakoosa Trail Fleet Services Master Plan Study City of Madison

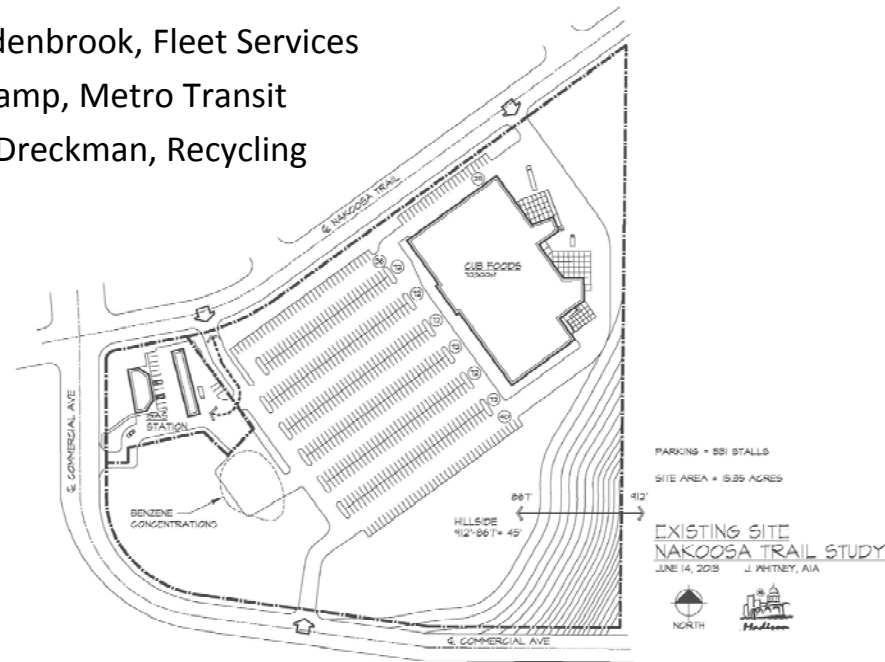
A Combined Facility for:

- Fleet Services
- Fire Maintenance Building
- Radio Shop
- Future Metro or Biodigester

Prepared by:

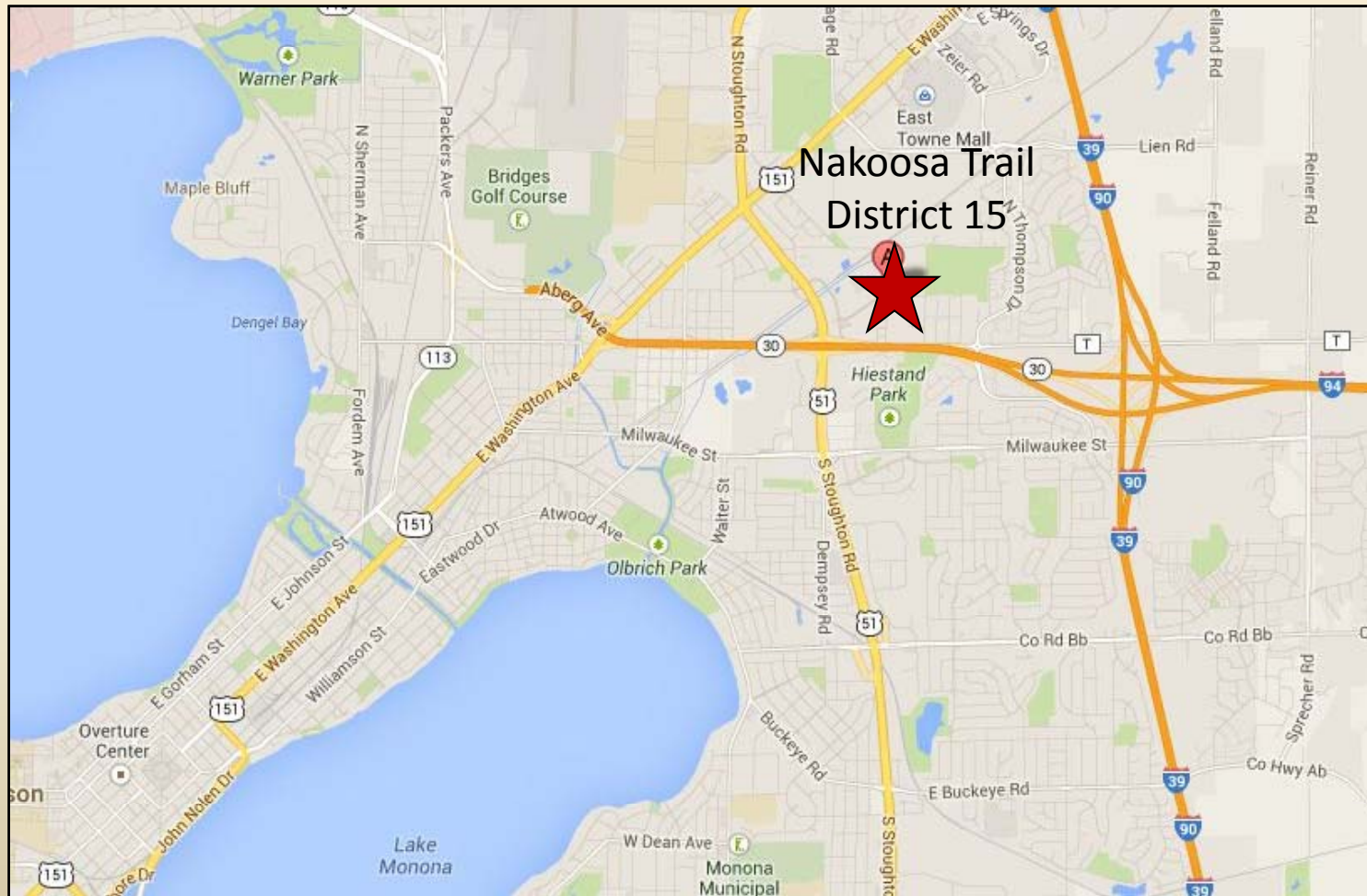
James Whitney, A.I.A., Architect

Bill Vandebrook, Fleet Services
Chuck Kamp, Metro Transit
George Dreckman, Recycling



Location Map

Nakoosa Trail at Commercial Avenue



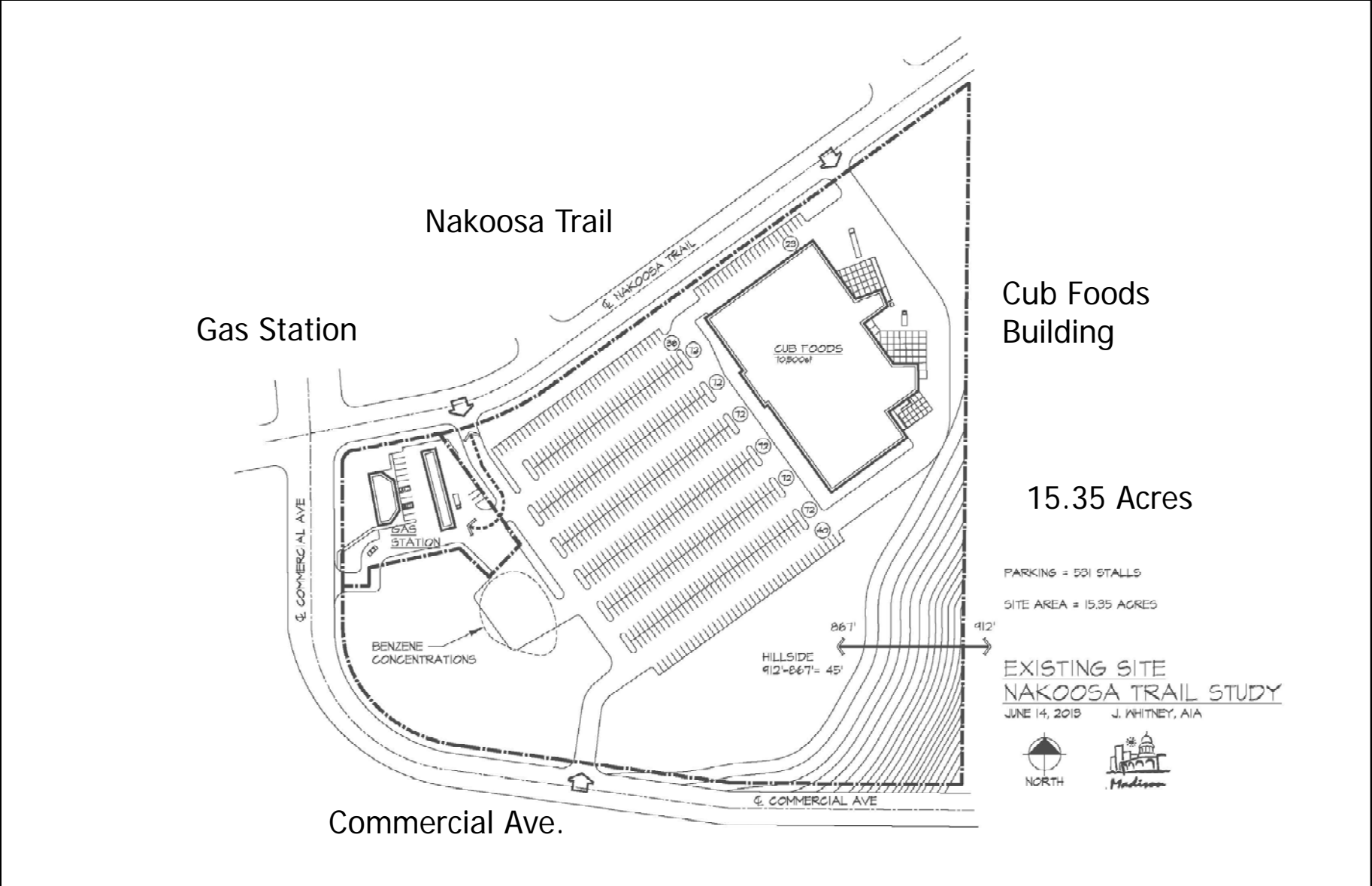
Site Map

Nakoosa Trail & Commercial Ave.



Date: 4/15/2013
Session: C:GTViewer_Sessions\nakoosa trail.gts
City of Madison, WI - GIS/Mapping data
Printed By: enjcw
Disclaimer: The City makes no representation about the accuracy of these records and shall not be liable for any damages

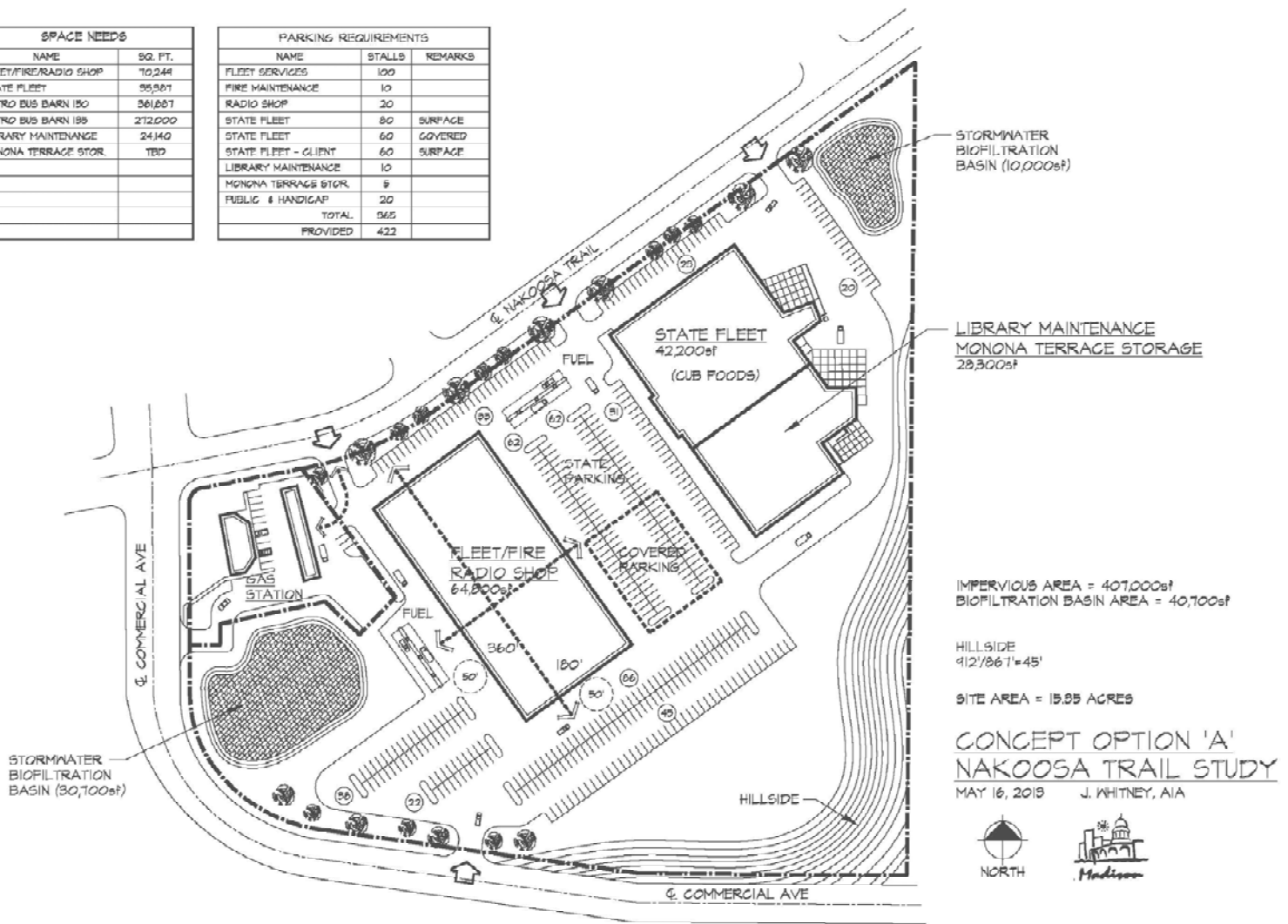
Existing Site Conditions – Cub Foods



Fleet Services with State Fleet – Concept ‘A’

SPACE NEEDS	
NAME	SQ. FT.
FLEET/FIRE/RADIO SHOP	70,244
STATE FLEET	95,901
METRO BUS BARN 180	361,687
METRO BUS BARN 189	272,000
LIBRARY MAINTENANCE	24,140
MONONA TERRACE STOR.	TRD

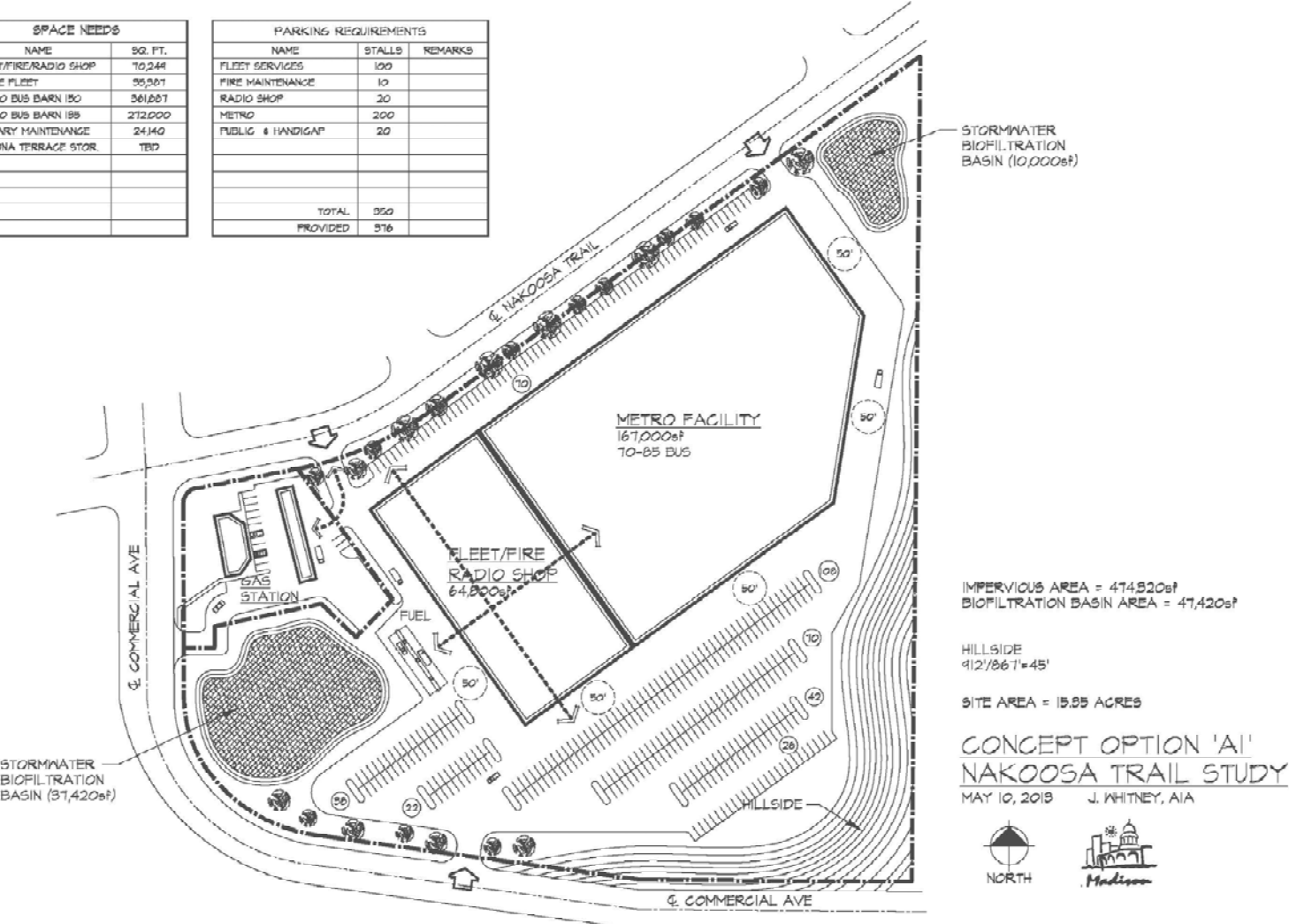
PARKING REQUIREMENTS			
NAME	STALLS	REMARKS	
FLEET SERVICES	100		
FIRE MAINTENANCE	10		
RADIO SHOP	20		
STATE FLEET	80	SURFACE	
STATE FLEET	60	COVERED	
STATE FLEET - CLIENT	60	SURFACE	
LIBRARY MAINTENANCE	10		
MONONA TERRACE STOR.	8		
PUBLIC & HANDICAP	20		
TOTAL	565		
PROVIDED	422		



Fleet Services with Metro Facility - Concept 'A1'

SPACE NEEDS	
NAME	SQ. FT.
FLEET/FIRE/RADIO SHOP	10,244
STATE FLEET	95,901
METRO BUS BARN 150	361,667
METRO BUS BARN 189	272,000
LIBRARY MAINTENANCE	24,140
MONONA TERRACE STOR.	TRD

PARKING REQUIREMENTS		
NAME	STALLS	REMARKS
FLEET SERVICES	100	
FIRE MAINTENANCE	10	
RADIO SHOP	20	
METRO	200	
PUBLIG & HANDIGAP	20	
TOTAL	350	
PROVIDED	376	



IMPERVIOUS AREA = 474,820sqft
 BIOFILTRATION BASIN AREA = 47,420sqft

HILLSIDE
 412/867=45'

SITE AREA = 15.85 ACRES

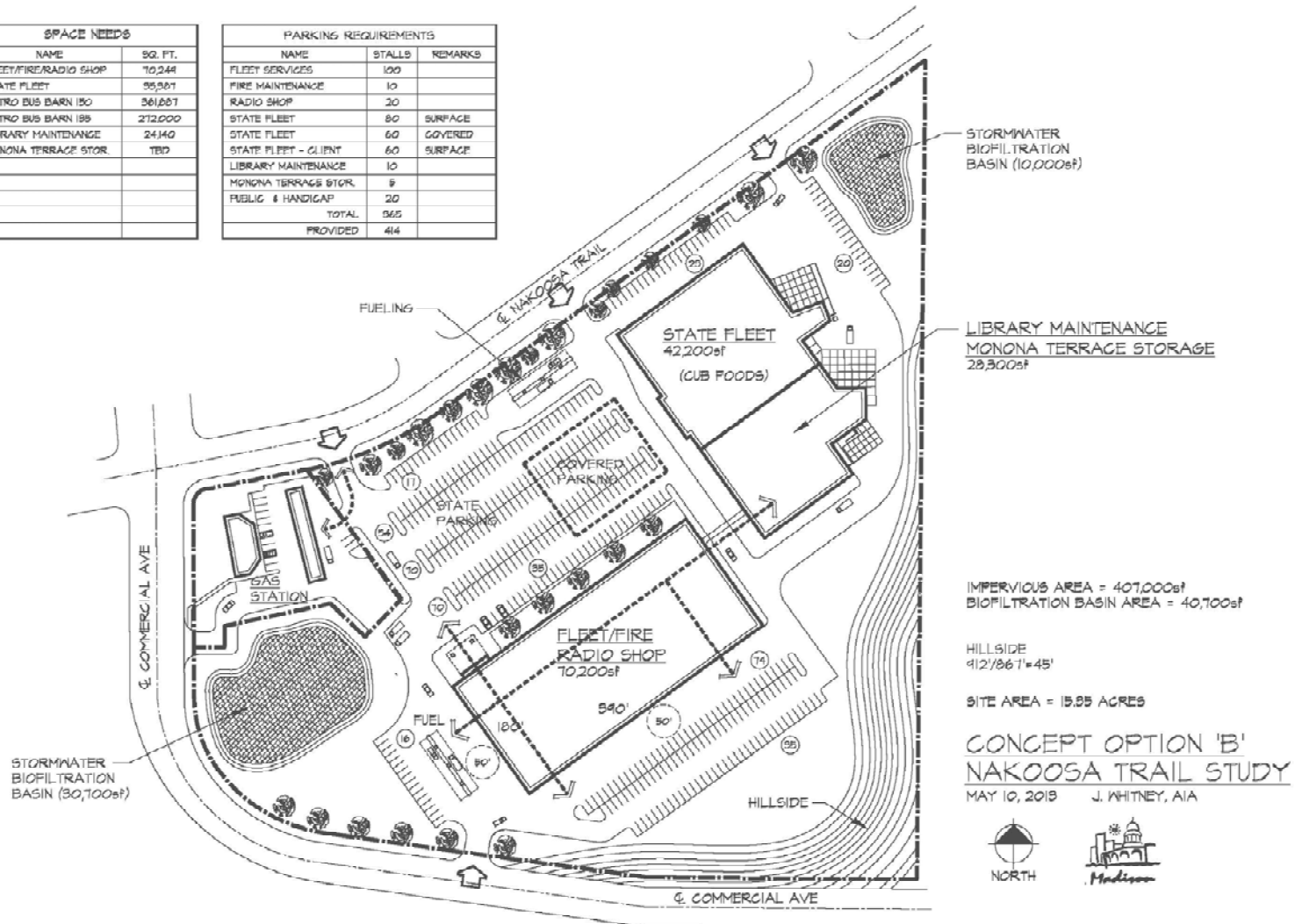
CONCEPT OPTION 'A1'
 NAKOOSA TRAIL STUDY
 MAY 10, 2019 J. WHITNEY, AIA



Fleet Services with State Fleet – Concept ‘B’

SPACE NEEDS	
NAME	SQ. FT.
FLEET/FIRE/RADIO SHOP	10,244
STATE FLEET	95,901
METRO BUS BARN ISO	361,667
METRO BUS BARN ISB	272,000
LIBRARY MAINTENANCE	24,140
MONONA TERRACE STOR.	TRD

PARKING REQUIREMENTS			
NAME	STALLS	REMARKS	
FLEET SERVICES	100		
FIRE MAINTENANCE	10		
RADIO SHOP	20		
STATE FLEET	60	SURFACE	
STATE FLEET	60	COVERED	
STATE FLEET - CLINT	60	SURFACE	
LIBRARY MAINTENANCE	10		
MONONA TERRACE STOR.	8		
PUBLIC & HANDICAP	20		
TOTAL	565		
PROVIDED	414		



IMPERVIOUS AREA = 407,000sf
 BIOFILTRATION BASIN AREA = 40,700sf

HILLSIDE
 412/867=45'

SITE AREA = 15.85 ACRES

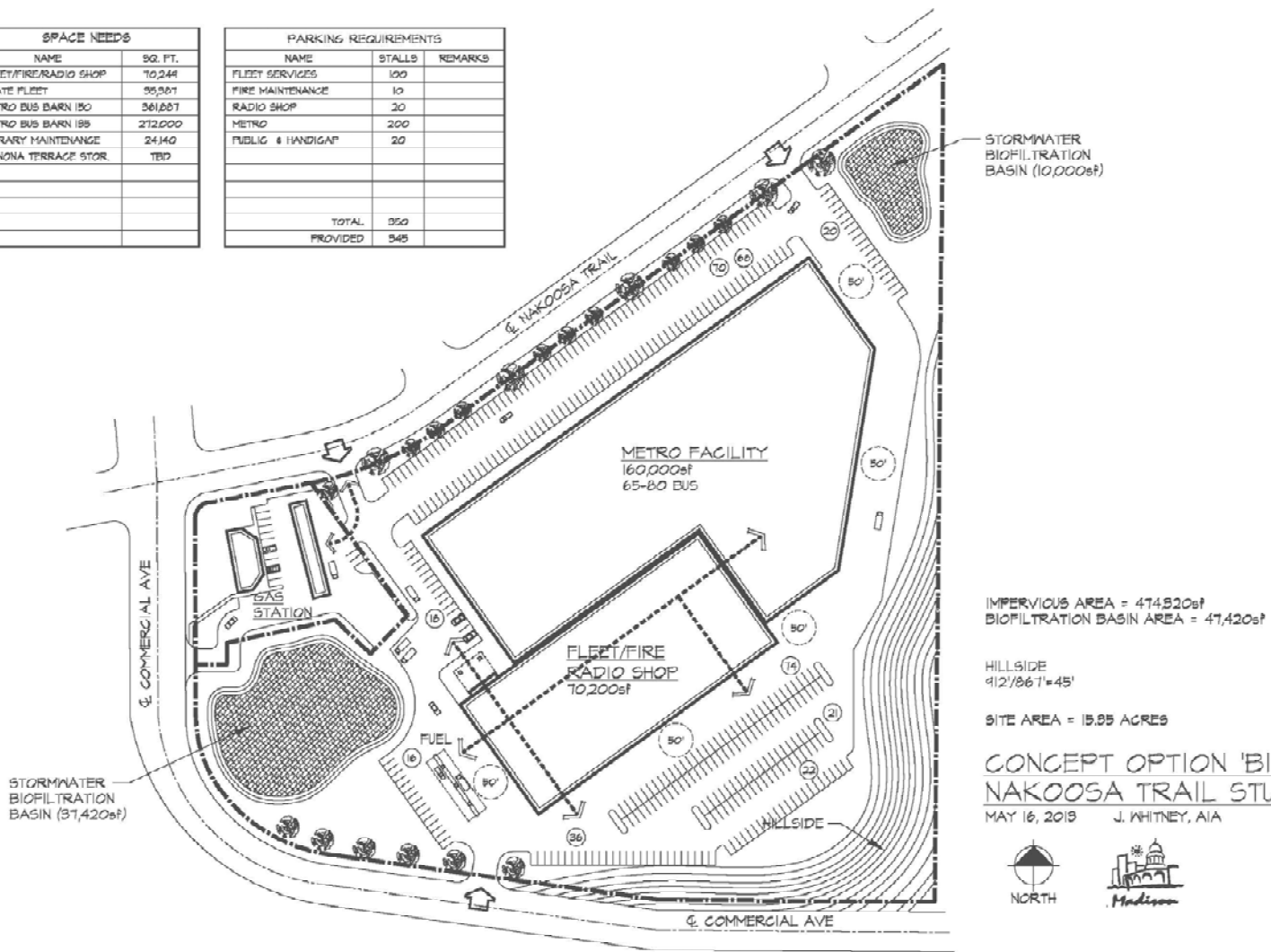
CONCEPT OPTION 'B'
 NAKOOSA TRAIL STUDY
 MAY 10, 2015 J. WHITNEY, AIA



Fleet Services with Metro Facility - Concept 'B1'

SPACE NEEDS	
NAME	SQ. FT.
FLEET/FIRE/RADIO SHOP	10,244
STATE FLEET	95,901
METRO BUS BARN 150	361,667
METRO BUS BARN 189	272,000
LIBRARY MAINTENANCE	24,140
MONONA TERRACE STOR.	TRD

PARKING REQUIREMENTS		
NAME	STALLS	REMARKS
FLEET SERVICES	100	
FIRE MAINTENANCE	10	
RADIO SHOP	20	
METRO	200	
PUBLIC & HANDICAP	20	
TOTAL	350	
PROVIDED	348	



IMPERVIOUS AREA = 474,820sf
 BIOFILTRATION BASIN AREA = 47,420sf

HILLSIDE
 412/861 = 45'

SITE AREA = 15.85 ACRES

CONCEPT OPTION 'B1'
 NAKOOSA TRAIL STUDY
 MAY 16, 2019 J. WHITNEY, AIA



