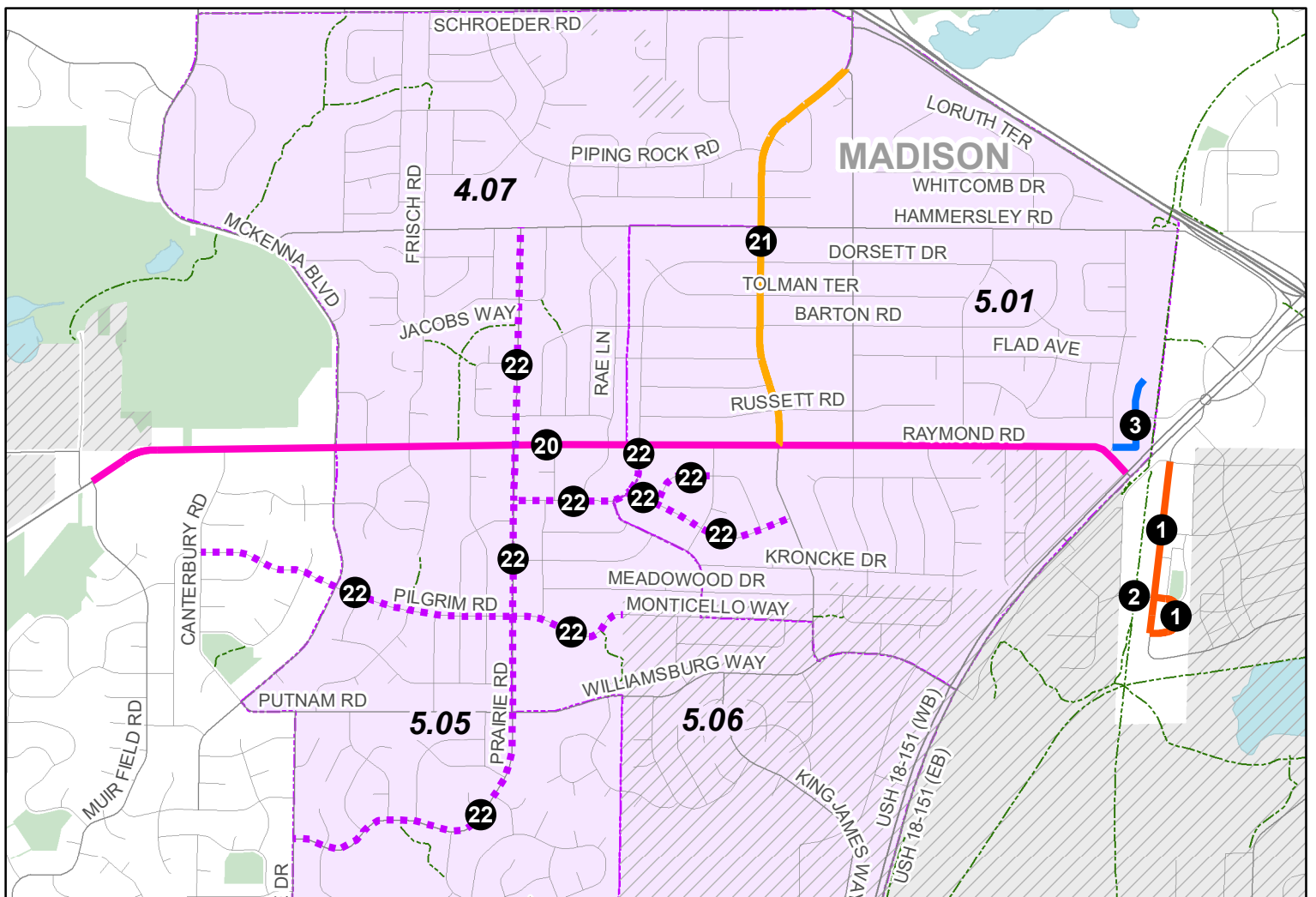


Safe Streets for All Grant Application
 US DOT AND City of Madison Equity Priority Tracts
 and Project Locations





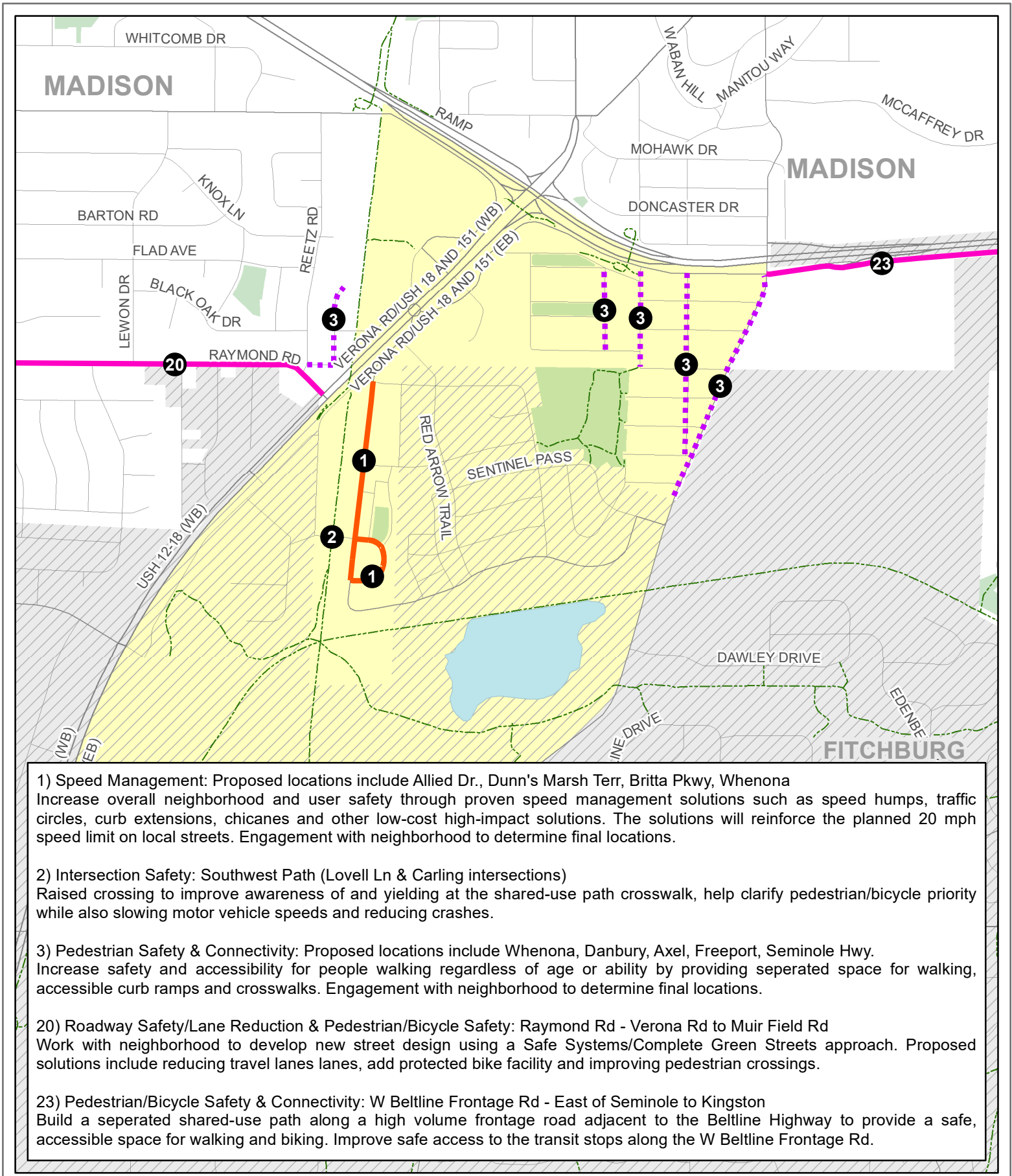
- 1) Speed Management: Proposed locations include Allied Dr., Dunn's Marsh Terr, Britta Pkwy, Whenona. Increase overall neighborhood and user safety through proven speed management solutions such as speed humps, traffic circles, curb extensions, chicanes and other low-cost high-impact solutions. The solutions will reinforce the planned 20 mph speed limit on local streets. Engagement with neighborhood to determine final locations.
- 2) Intersection Safety: Southwest Commuter Path. Raised crossing to improve awareness of and yielding at the shared-use path crosswalk, help clarify pedestrian/bicycle priority while also slowing motor vehicle speeds and reducing crashes.
- 3) Pedestrian Safety & Connectivity: Proposed locations include Whenona, Danbury, Axel, Freeport, Seminole Hwy. Increase safety and accessibility for people walking regardless of age or ability by providing seperated space for walking, accessible curb ramps and crosswalks. Engagement with neighborhood to determine final locations.
- 20) Roadway Safety/Lane Reduction & Pedestrian/Bicycle Safety: Raymond Rd - Verona Rd to Muir Field Rd. Work with neighborhood to develop new street design using a Safe Systems/Complete Green Streets approach. Proposed solutions include reducing travel lanes lanes, add protected bike facility and improving pedestrian crossings.
- 21) Roadway Safety & Pedestrian/Bicycle Safety: Whitney Way - Gilbert to Raymond. Work with neighborhood to develop new street design using a Safe Systems/Complete Green Streets approach. Proposed solutions include protected bike lanes, narrowed travel lanes, improved pedestrian crossings.
- 22) Speed Management & Pedestrian Safety & Connectivity: Thrush, Riva, Balsam, Prairie, Pilgrim, Monticello. Work with the neighborhood to increase safety and accessibility for people walking regardless of age or ability by filling gaps in the sidewalk network, adding accessible curb ramps and crosswalks where they are missing. Increase overall safety by implementing low-cost high-impact speed management solutions that support the planned 20 mph local street speed limit.



Safe Streets for All Grant Application

Madison Equity Priority Tracts 5.01, 4.07, 5.05 & 5.06

- Bike
- Parks
- Railroad
- Priority Census Tract



Safe Streets for All Grant Application

US DOT Priority Tract 6

- Bike
- Parks
- + Railroad
- Priority Census Tract

7) Bicycle & Pedestrian Safety & Connectivity: Broom St - W Main to Johnson

Add protected bike lane (serves as one-way pair with already constructed protected bike lane on Bassett St) to improve safety for users of all ages & abilities, make pedestrian crossing improvements; protected intersection at W Washington to reduce both bicycle and pedestrian crashes at high volume intersection.

15) Safe Systems/Complete Streets Corridor Planning: Regent St - W Washington to Breese Terr

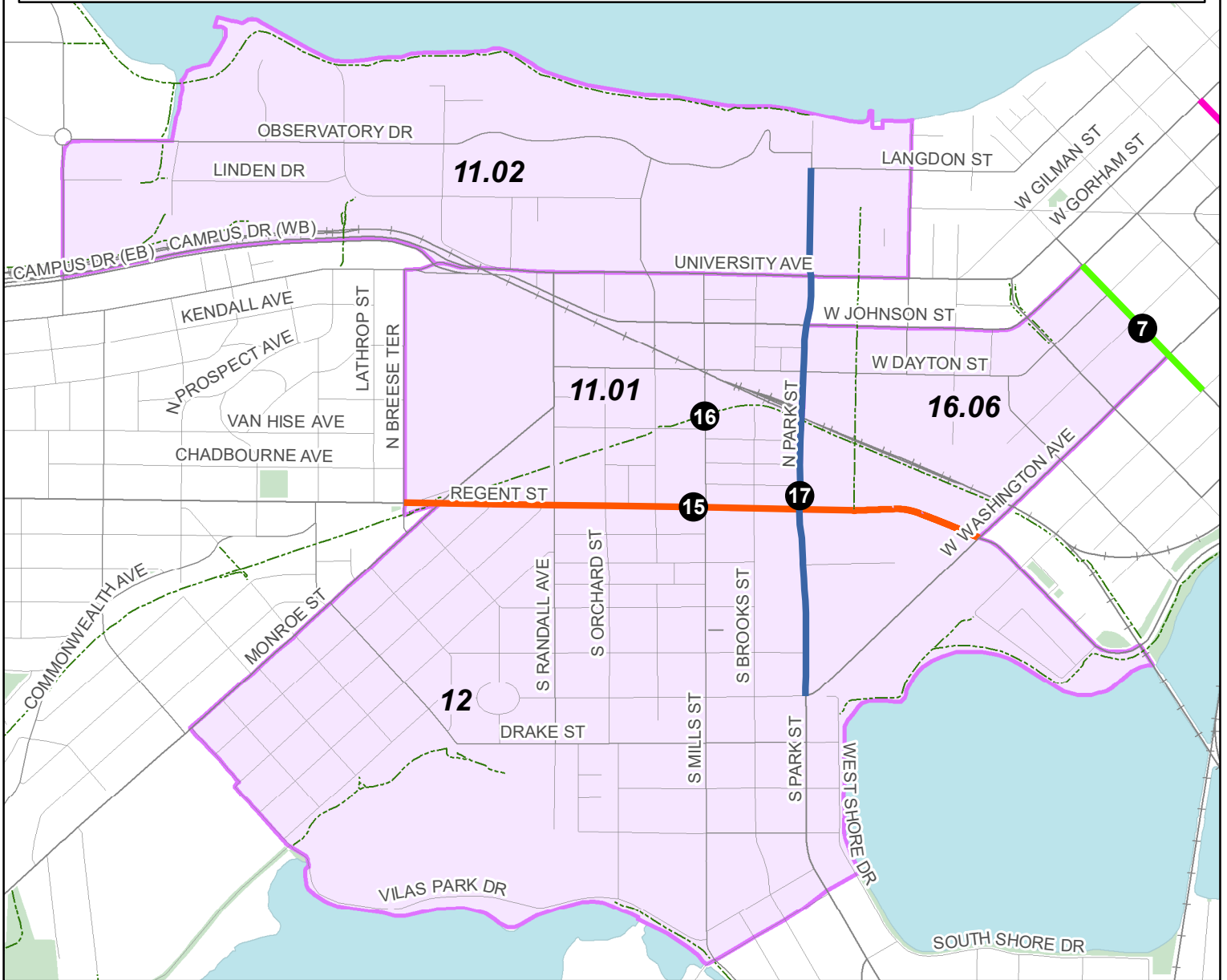
Engagement, Design Consultant and Construction Documents - Construction will be City funded. Focus on improving safety along corridor for people walking, biking, taking transit and driving using a Safe Systems and Complete Green Streets approach. This street borders the UW-Madison campus, a residential neighborhood and is home to many small businesses. The City has funding to reconstruct this street but needs assistance in finding the best solutions to improve safe mobility for all travel modes.

16) Intersection Safety: Southwest Path - Mills St

Raised crossing to raise awareness of the shared-use path crosswalk & improve yielding compliance, help clarify pedestrian/bicycle priority while also slowing driver speeds.

17) Bicycle Safety: Park St - Langdon to W Washington/Vilas Ave

Increase safety of current painted bike lanes by building protected bike lanes to connect the heart of the UW-Madison campus



Safe Streets for All Grant Application

Madison Equity Priority Tracts 11.01, 11.02, 12, & 16.06

- Bike
- Parks
- Railroad
- Priority Census Tract

4) Bicycle Safety & Connectivity: W Badger Rd

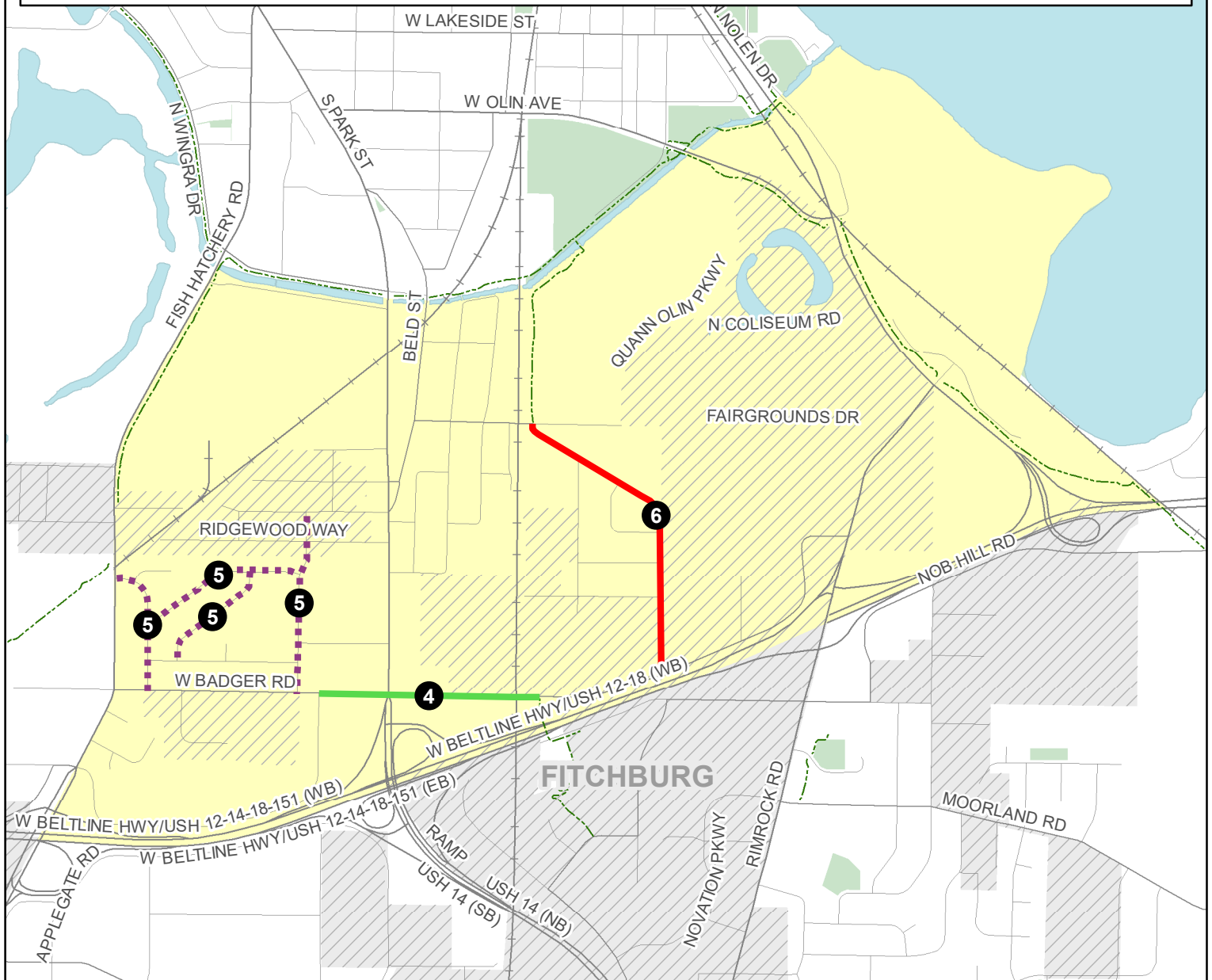
Provide a safe All Ages & Abilities facility to connect additional segments of the South Madison neighborhood to the pedestrian/bicycle bridge over the Beltline Hwy. A recently funded Transportation Alternatives Program project will fund construction of a shared-use path east of the Beltline bridge. The proposed solution includes funding to create a shared use path or protected bike lanes along with intersection with traffic signal safety updates. The final project design will be based on feasibility as well as community engagement.

5) Speed Management: Proposed locations include Cypress Way, Hackberry, Sequoia & Catalpa Rd

Speed management on streets near Lincoln Elementary School. Increase overall school, neighborhood and user safety through proven speed management solutions such as speed humps, traffic circles, curb extensions, chicanes and other low-cost high impact solutions. The solutions will reinforce the planned 20 mph speed limit on local streets and the 15 mph school zone speed limit. Engagement with students and the neighborhood to determine final locations and solutions.

6) Bicycle Safety & Connectivity: Rusk/Koster St

Create an All Ages & Ability Bike Boulevard to connect Quann Park Path to the planned Badger/Rusk Path (which connects to Beltline Hwy pedestrian/bicycle overpass) with appropriate signage and needed traffic speed/volume management improvements. The Badger/Rusk Path has received Transportation Alternatives Program funding.



Safe Streets for All Grant Application

US DOT Priority Tract 14.01

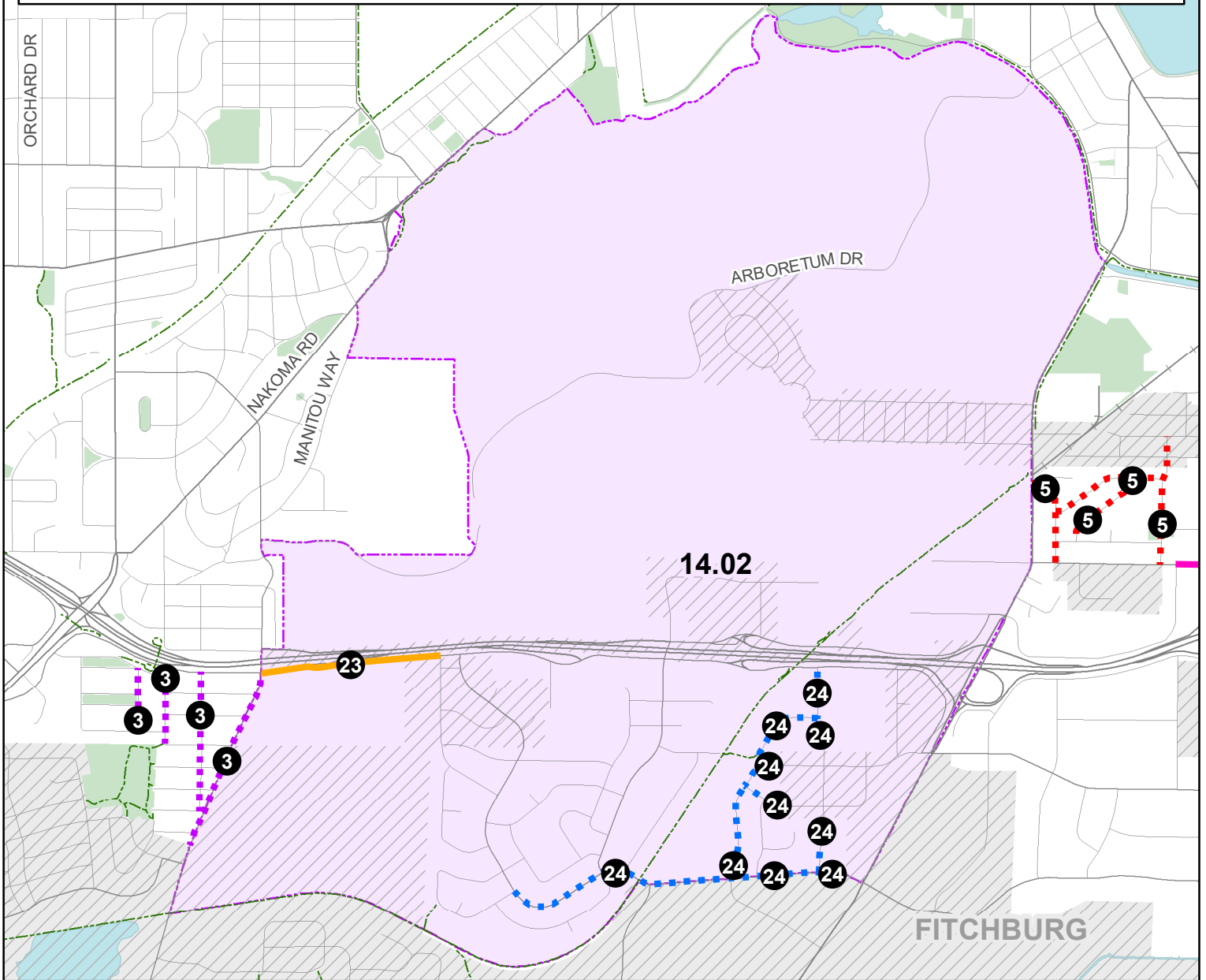
- Bike
- Parks
- Railroad
- Priority Census Tract

3) Pedestrian Safety & Connectivity: Proposed locations include Whenona, Danbury, Axel, Freeport, Seminole Hwy. Increase safety and accessibility for people walking regardless of age or ability by providing seperated space for walking, accessible curb ramps and crosswalks. Engagement with neighborhood to determine final locations.

5) Speed Management: Proposed locations include Cypress Way, Hackberry, Sequoia & Catalpa. Speed management on streets near Lincoln Elementary School. Increase overall school, neighborhood and user safety through proven speed management solutions such as speed humps, traffic circles, curb extensions, chicanes and other low-cost high impact solutions. The solutions will reinforce the planned 20 mph speed limit on local streets and the 15 mph school zone speed limit. Engagement with students and the neighborhood to determine final locations and solutions.

23) Pedestrian/Bicycle Safety & Connectivity: W Beltline Frontage Rd - East of Seminole to Kingston Dr. Build a seperated shared-use path along a high volume frontage road adjacent to the Beltline Highway to provide a safe, accessible space for walking and biking. Improve safe access to the transit stops along the W Beltline Frontage Rd.

24) Speed Management & Pedestrian Safety: Proposed locations include Post Rd, Traceway, Coho, Pike & Luann Ln. Work with the neighborhood to increase safety by implementing low-cost high-impact speed management solutions and crosswalk additions to support safe access to Aldo Leopold Park and Aldo Leopold Elementary and the transit stops on Post Rd.



Safe Streets for All Grant Application

Madison Equity Priority Tracts 14.02

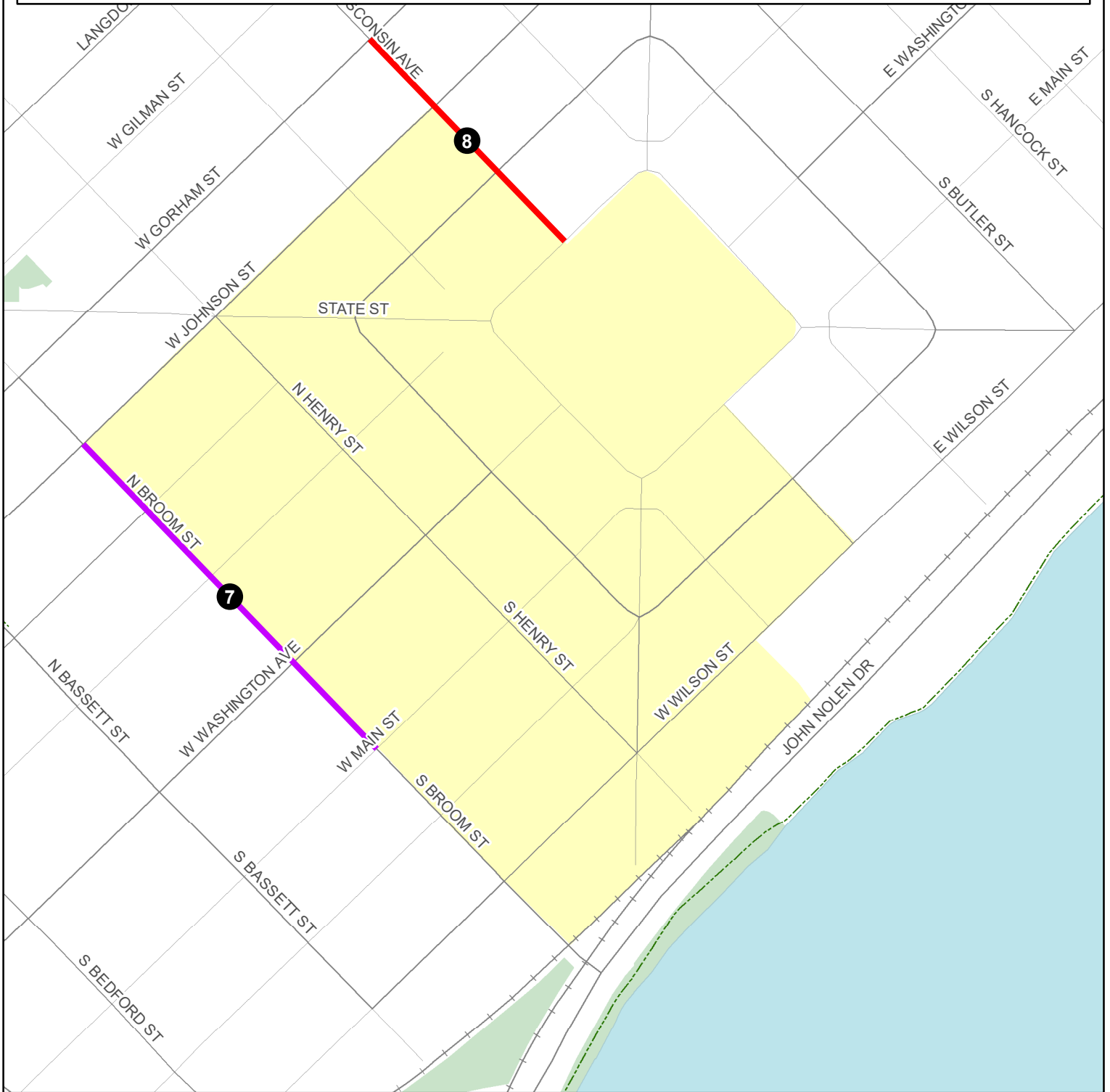
- Bike
- Parks
- + Railroad
- Priority Census Tract

7) Bicycle & Pedestrian Safety & Connectivity: Broom St - W Main to Johnson

Add protected bike lane (serves as one-way pair with already constructed protected bike lane on Bassett St) to improve safety for users of all ages & abilities, make pedestrian crossing improvements; protected intersection at W Washington to reduce both bicycle and pedestrian crashes at high volume intersection.

8) Reduce Turning Crashes: Wisconsin Ave

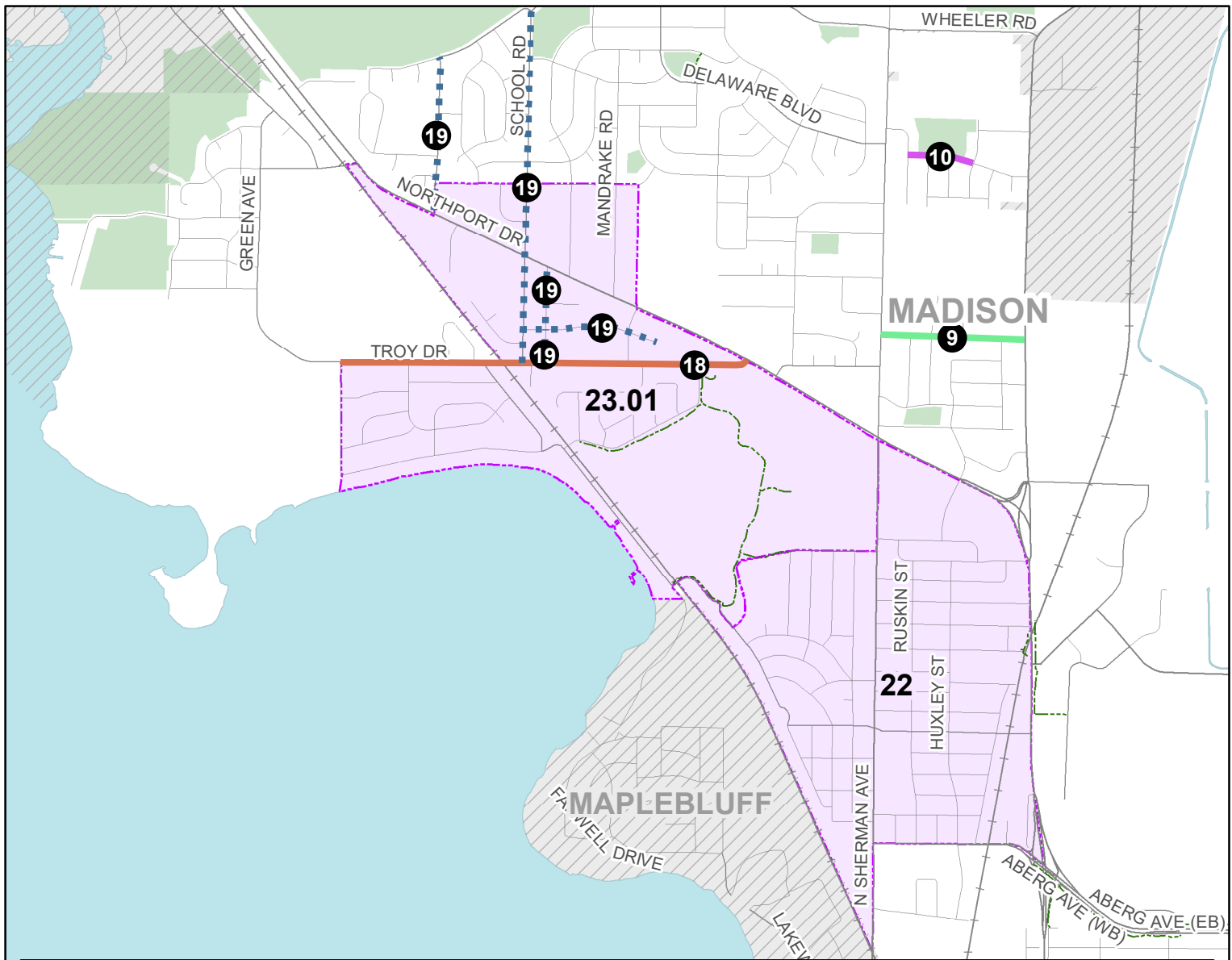
Address motor vehicle turn crashes by widening center islands, upgrading all traffic signal heads, adding a median signal pole and indication, upgrading signal cabinet, adding continental crosswalks to improve pedestrian visibility and safety



Safe Streets for All Grant Application

US DOT Priority Tract 17.04

- Bike
- Parks
- Railroad
- Priority Census Tract



9) Speed Management: Tennyson

Speed management near Lakeview Elementary School and the Tennyson Senior Living Community. Increase overall neighborhood and user safety through proven speed management solutions such as speed humps, traffic circles, curb extensions, chicanes and other low-cost high-impact solutions. The solutions will reinforce the planned 20 mph speed limit on local streets.

10) Speed Management: Anhalt

Speed management near Whitetail Ridge Park. Increase overall neighborhood and user safety through proven speed management solutions such as speed humps, traffic circles, curb extensions, chicanes and other low-cost high-impact solutions. The solutions will reinforce the planned 20 mph speed limit on local streets.

18) Speed Management and Pedestrian/Bicycle Safety: Troy Dr.

Increase safety and accessibility for people walking regardless of age or ability by filling gaps in the sidewalk network, adding accessible curb ramps and crosswalks where they are missing. Increase overall safety by implementing low-cost high-impact speed management solutions and work with community to develop solutions to improve bicycle safety and improve connectivity in this corridor.

19) Pedestrian/Bicycle Safety & Speed Management: School Rd, Kennedy, Toban, Blaine (SRTS)

Increase safety and accessibility for people walking regardless of age or ability by filling gaps in the sidewalk network, adding accessible curb ramps and crosswalks where they are missing. Increase overall safety by implementing low-cost high-impact speed management solutions and work with community to develop solutions to improve bicycle safety and improve connectivity near Mendota Elementary and Lindbergh Elementary.



Safe Streets for All Grant Application

Madison Equity Priority Tracts 22 & 23.01

- Bike
- Parks
- Railroad
- Priority Census Tract

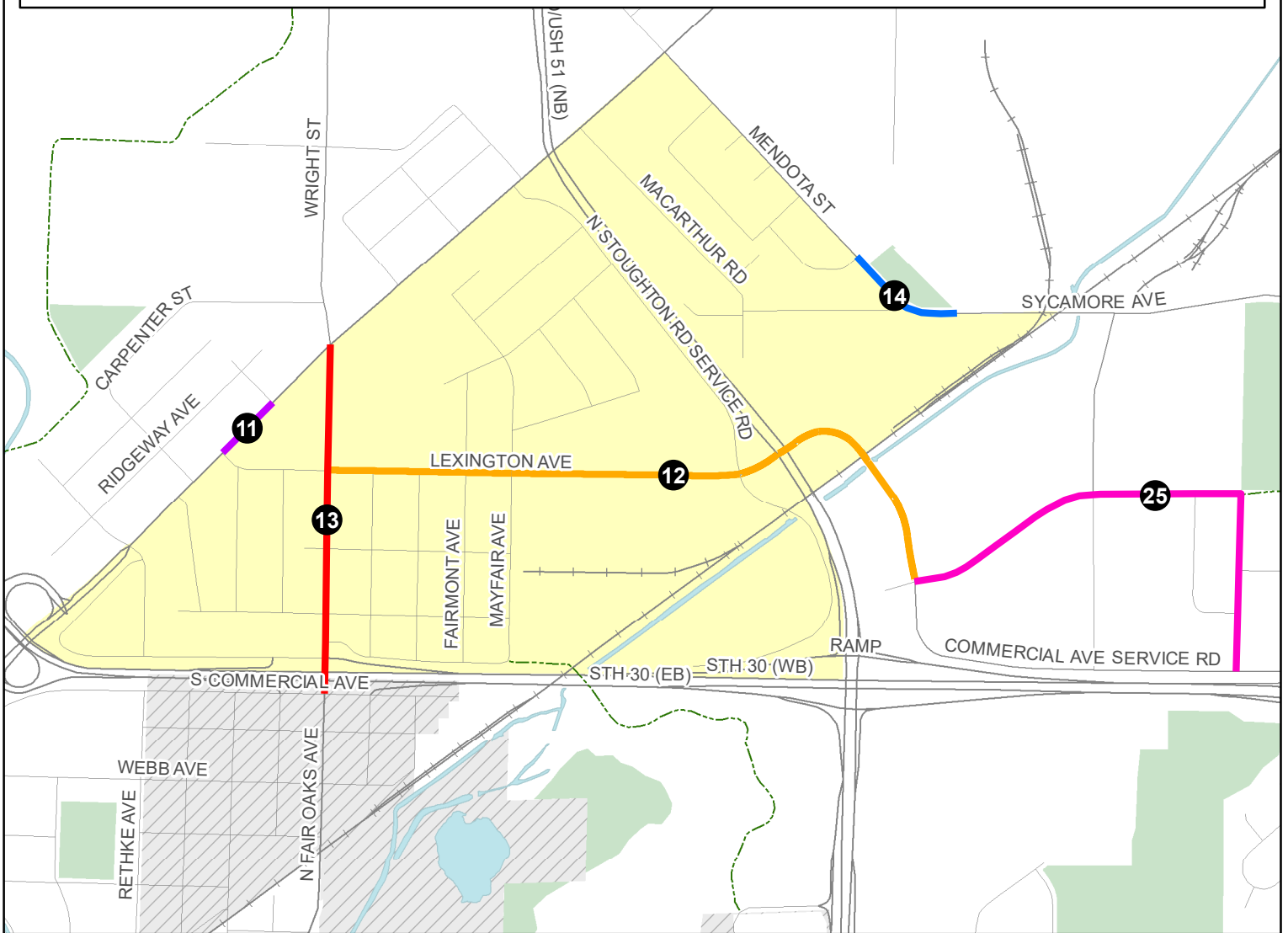
11) Pedestrian Crossing Safety: E Washington Ave between Melvin Ct and Wright St
 Work with the neighborhood to develop solutions such as an Rectangular Rapid Flash Beacon and continental crosswalks to address pedestrian crossing safety. The final location(s) and solutions will be developed in collaboration with the neighborhood.

12) Pedestrian Safety & Connectivity: Lexington Ave/Commercial Ave
 Work with neighborhood to determine best facility type (sidewalk or path) to connect to businesses at Nakoosa Trail. Increase overall safety through speed management solutions on Lexington Ave especially near Hawthorne Elementary.

13) Bicycle & Pedestrian Safety: N Fair Oaks
 Work with neighborhood to determine pedestrian/bicycle safety improvements. Proposed improvement is to build protected bike lanes, improve pedestrian crosswalks and update signing and pavement marking along corridor

14) Pedestrian Safety & Connectivity: Mendota St
 Increase safety and accessibility for people walking regardless of age or ability by providing seperated space for walking, accessible curb ramps and crosswalks Increase overall safety by implementing speed management solutions near near Mayfair Park.

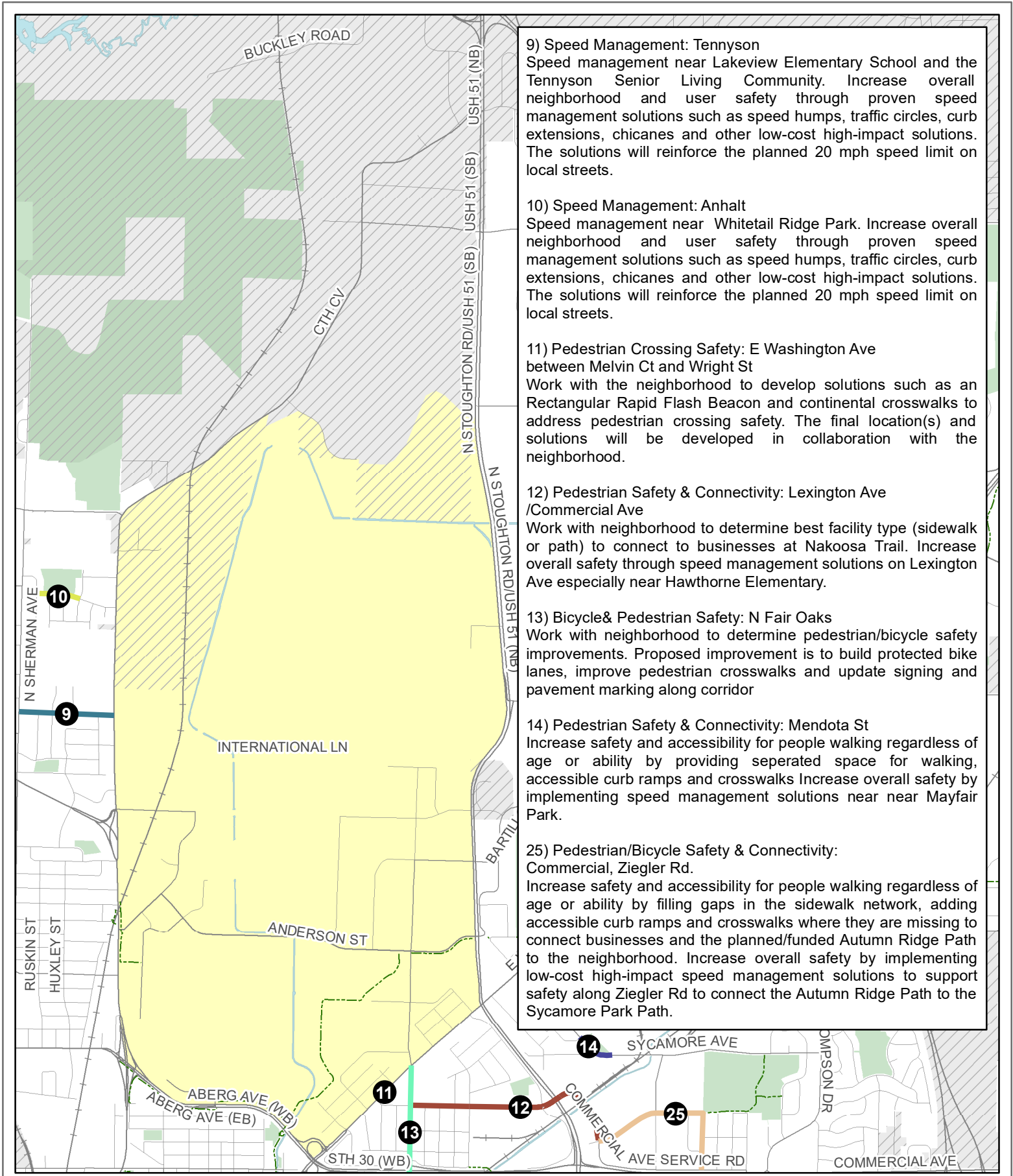
25) Pedestrian/Bicycle Safety & Connectivity: Commercial, Ziegler
 Increase safety and accessibility for people walking regardless of age or ability by filling gaps in the sidewalk network, adding accessible curb ramps and crosswalks where they are missing to connect businesses and the planned/funded Autumn Ridge Path to the neighborhood. Increase overall safety by implementing low-cost high-impact speed management solutions to support



Safe Streets for All Grant Application

US DOT Priority Tract 26.01

- Bike
- Parks
- Railroad
- Priority Census Tract



Safe Streets for All Grant Application
US DOT Priority Tract 25

- Bike
- Parks
- Railroad
- Priority Census Tract

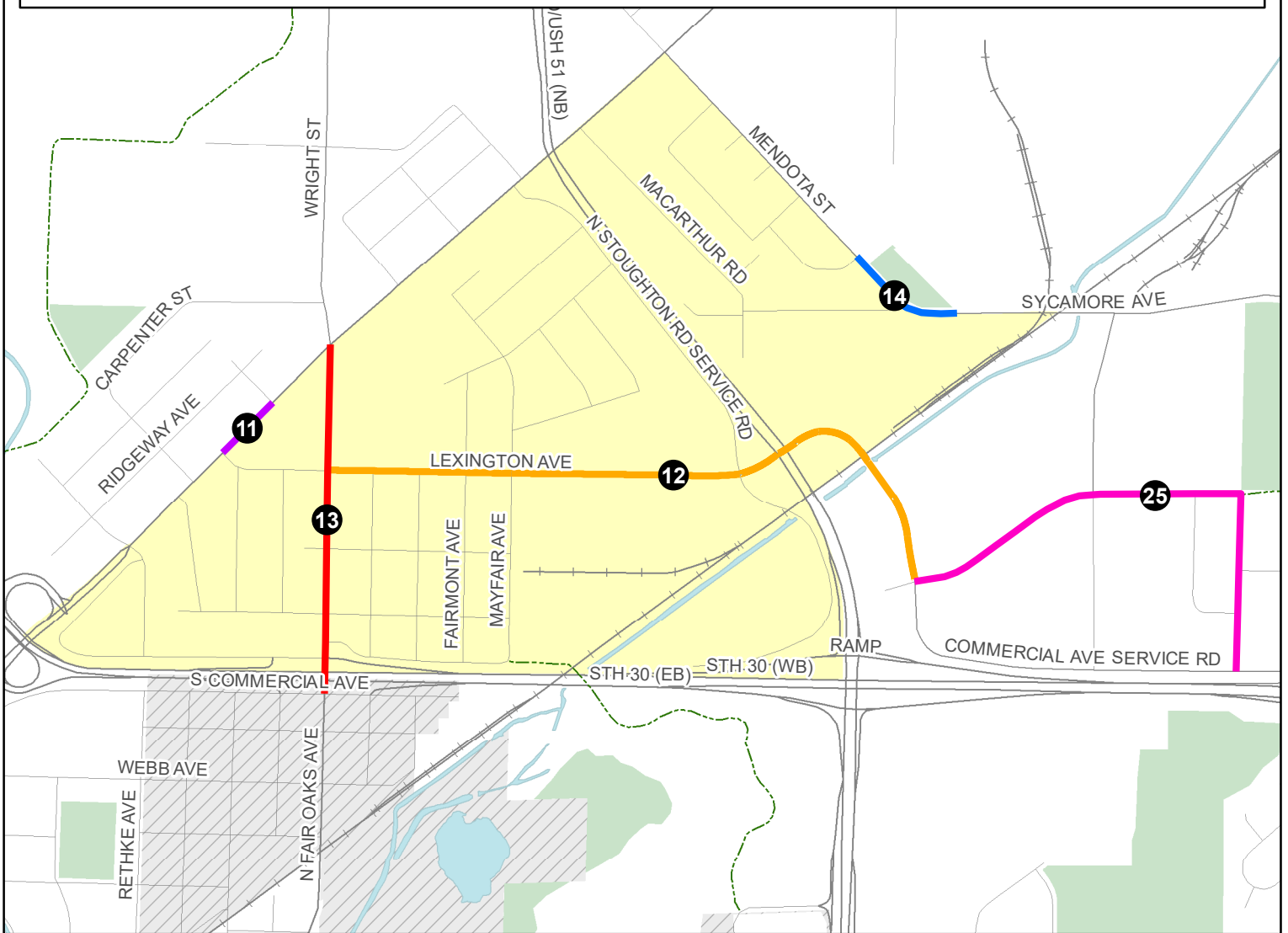
11) Pedestrian Crossing Safety: E Washington Ave between Melvin Ct and Wright St
 Work with the neighborhood to develop solutions such as an Rectangular Rapid Flash Beacon and continental crosswalks to address pedestrian crossing safety. The final location(s) and solutions will be developed in collaboration with the neighborhood.

12) Pedestrian Safety & Connectivity: Lexington Ave/Commercial Ave
 Work with neighborhood to determine best facility type (sidewalk or path) to connect to businesses at Nakoosa Trail. Increase overall safety through speed management solutions on Lexington Ave especially near Hawthorne Elementary.

13) Bicycle & Pedestrian Safety: N Fair Oaks
 Work with neighborhood to determine pedestrian/bicycle safety improvements. Proposed improvement is to build protected bike lanes, improve pedestrian crosswalks and update signing and pavement marking along corridor

14) Pedestrian Safety & Connectivity: Mendota St
 Increase safety and accessibility for people walking regardless of age or ability by providing seperated space for walking, accessible curb ramps and crosswalks Increase overall safety by implementing speed management solutions near near Mayfair Park.

25) Pedestrian/Bicycle Safety & Connectivity: Commercial, Ziegler
 Increase safety and accessibility for people walking regardless of age or ability by filling gaps in the sidewalk network, adding accessible curb ramps and crosswalks where they are missing to connect businesses and the planned/funded Autumn Ridge Path to the neighborhood. Increase overall safety by implementing low-cost high-impact speed management solutions to support



Safe Streets for All Grant Application

US DOT Priority Tract 26.01

-  Bike
-  Parks
-  Railroad
-  Priority Census Tract

12) Pedestrian Safety & Connectivity: Lexington Ave/Commercial Ave

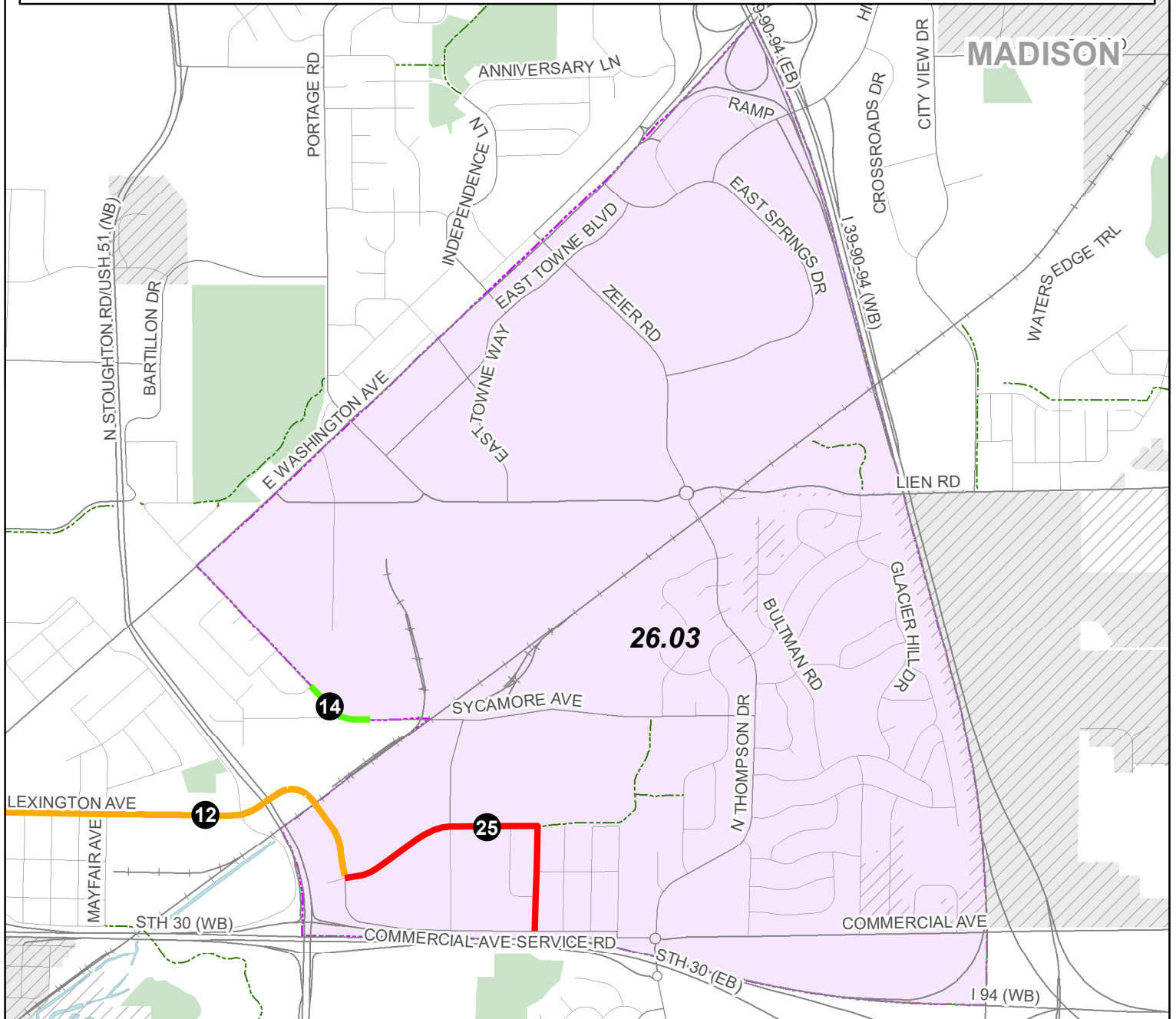
Work with neighborhood to determine best facility type (sidewalk or path) to connect to businesses at Nakoosa Trail. Increase overall safety through speed management solutions on Lexington Ave especially near Hawthorne Elementary.

14) Pedestrian Safety & Connectivity: Mendota St

Increase safety and accessibility for people walking regardless of age or ability by providing seperated space for walking, accessible curb ramps and crosswalks Increase overall safety by implementing speed management solutions near near Mayfair Park.

25) Pedestrian/Bicycle Safety & Connectivity: Commercial, Ziegler Rd

Increase safety and accessibility for people walking regardless of age or ability by filling gaps in the sidewalk network, adding accessible curb ramps and crosswalks where they are missing to connect businesses and the planned/funded Autumn Ridge Path to the neighborhood. Increase overall safety by implementing low-cost high-impact speed management solutions to support safety along Ziegler Rd to connect the Autumn Ridge Path to the Sycamore Park Path.



Safe Streets for All Grant Application

Madison Equity Priority Tracts 26.03

- Bike
- Parks
- Railroad
- Priority Census Tract