

Proposed Building Basement Level Plan

722 Williamson Street
 Scale: 1/16" = 1' - 0"

January 27, 2016 - UDC Informational Submittal

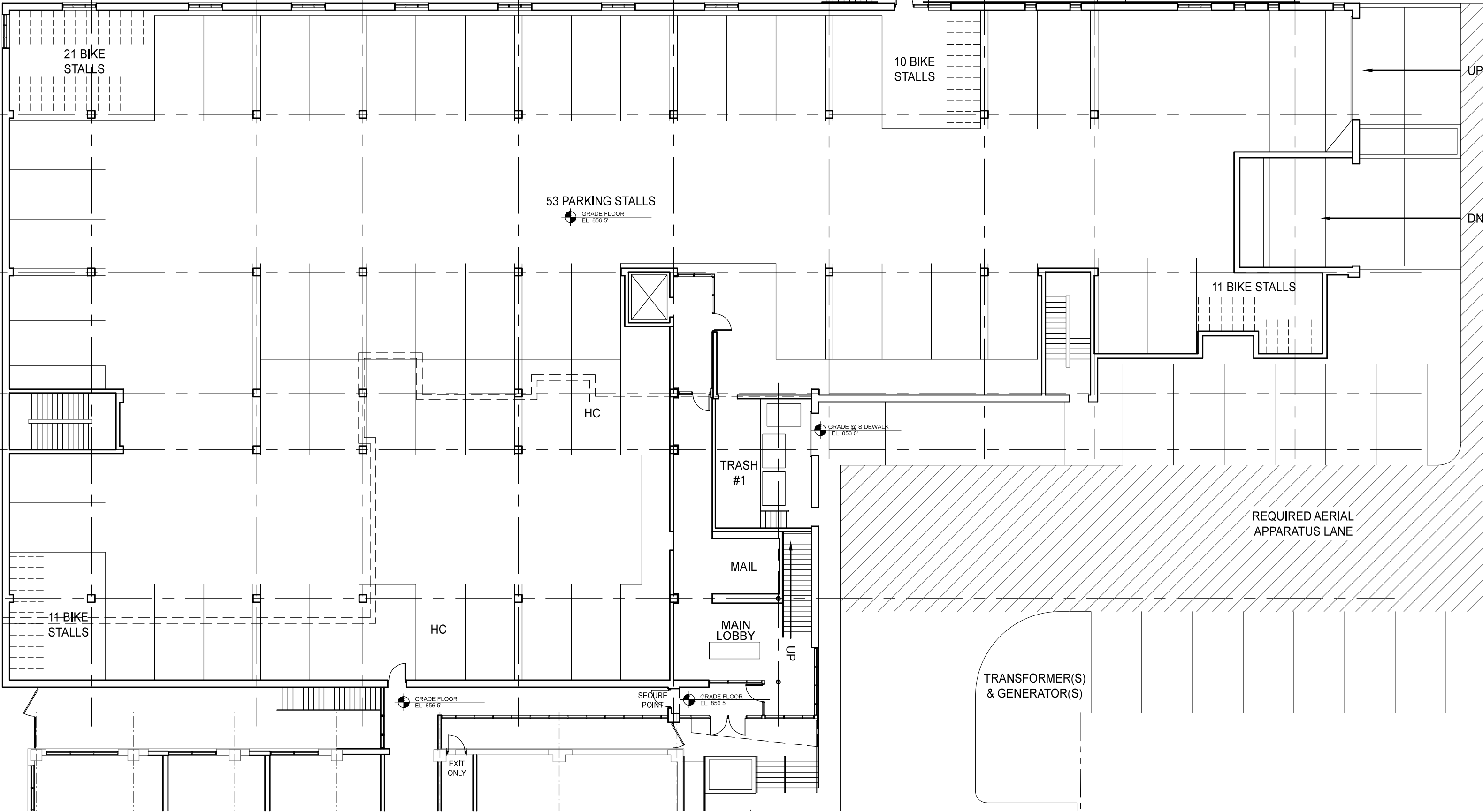


Cās₄
 architecture, llc

© 2016

15003.00

GRADE @ RIGHT OF WAY
EL. 852.5'



New Building Grade Level Plan

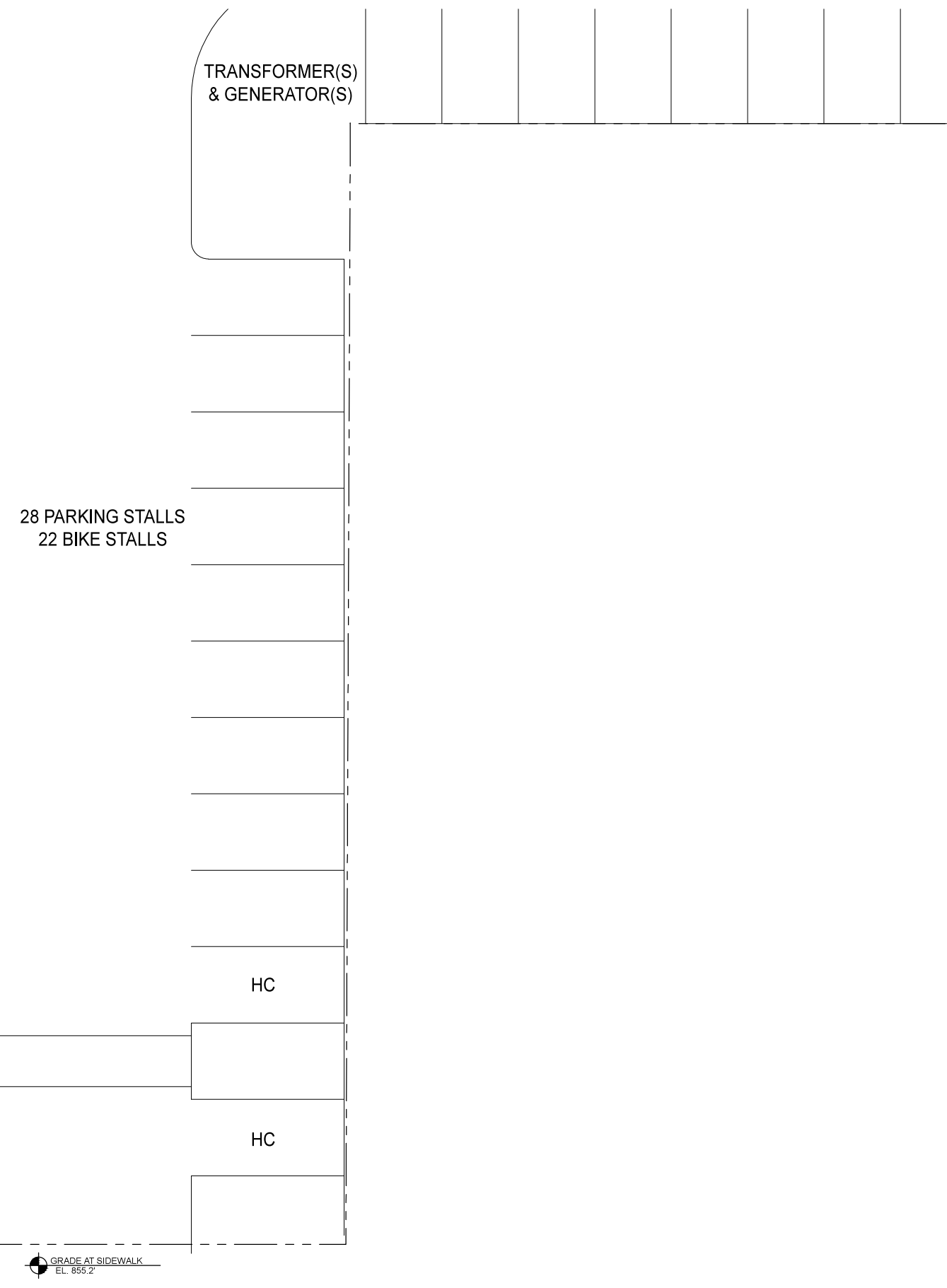
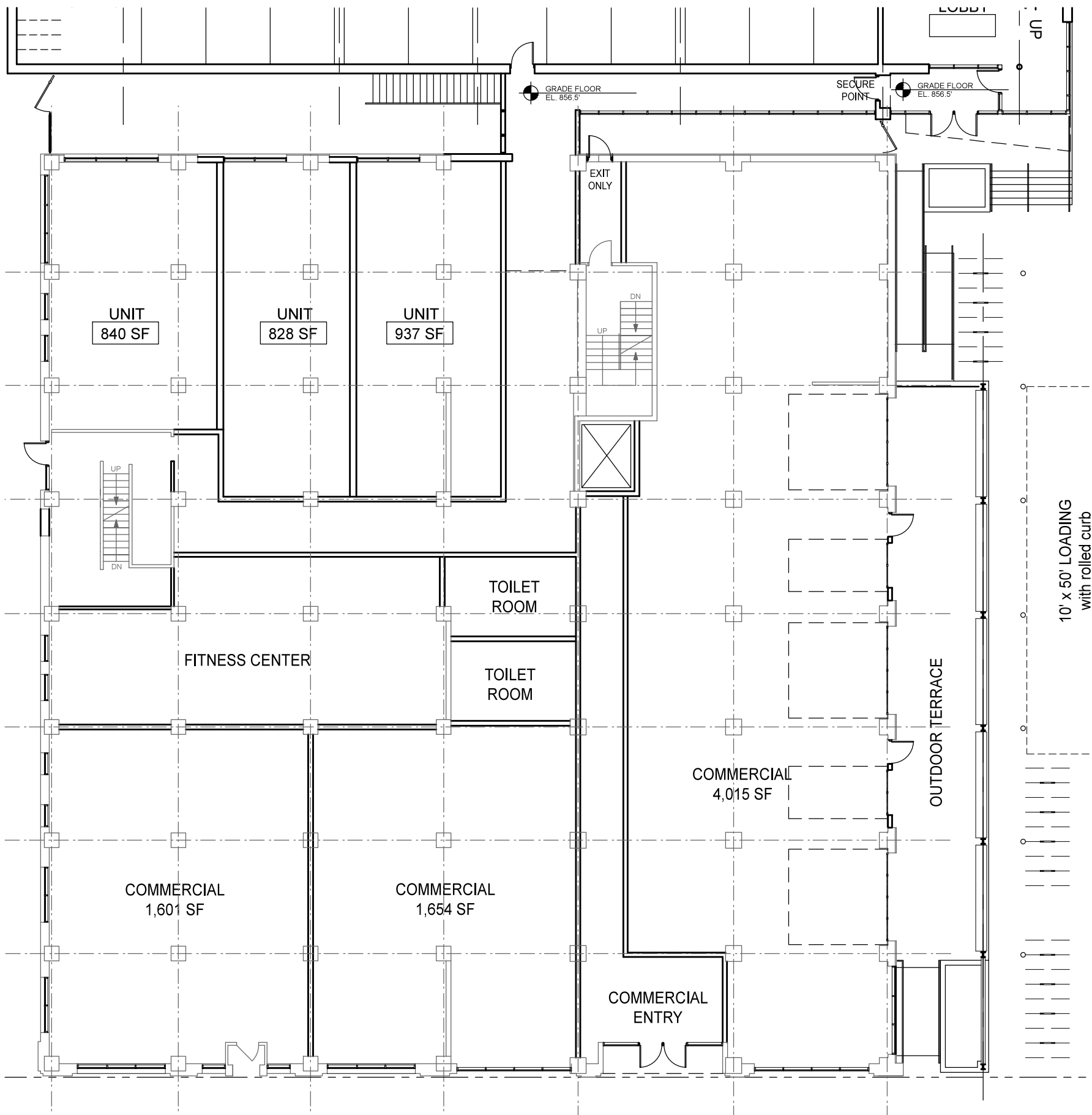
722 Williamson Street
Scale: 1/16" = 1' - 0"

January 27, 2016 - UDC Informational Submittal



Cās₄
architecture, llc

15003.00



15003.00

Olds Seed Building Grade Level Plan

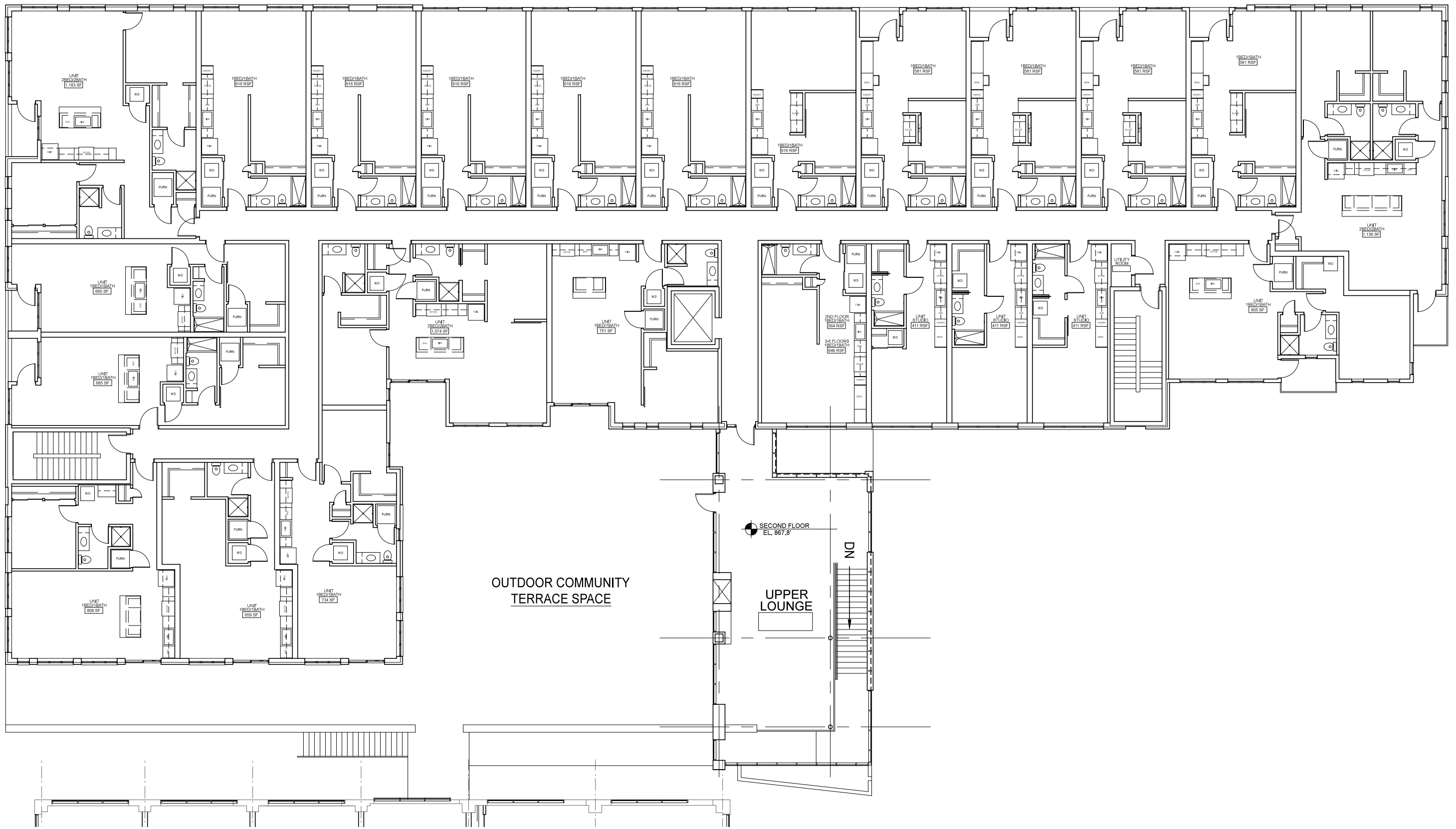
722 Williamson Street
 Scale: 1/16" = 1' - 0"

January 27, 2016 - UDC Informational Submittal



© 2016

Cās₄
 architecture, llc



15003.00

New Building Second- Fourth Level Plan

722 Williamson Street
 Scale: 1/16" = 1' - 0"

January 27, 2016 - UDC Informational Submittal



© 2016

Cās₄
 architecture, llc



Olds Seed Building Second- Fourth Level Plan

722 Williamson Street
 Scale: 1/16" = 1' - 0"

January 27, 2016 - UDC Informational Submittal

15003.00



© 2016

Cās₄
 architecture, llc



View from Bike Path looking west



View from Bike Path looking east



Gateway to Development from Bike Path



Direct access from Building to Bike Path

15003.00

Building Images

722 Williamson Street

Scale: NTS

January 27, 2016 - UDC Informational Submittal

© 2016

Cās₄
architecture, llc



View from Williamson Street



View of Lantern and Courtyard between Buildings beyond



Approach to Promenade and Lantern from Williamson Street



View from Promenade back to Lantern

15003.00

Building Images

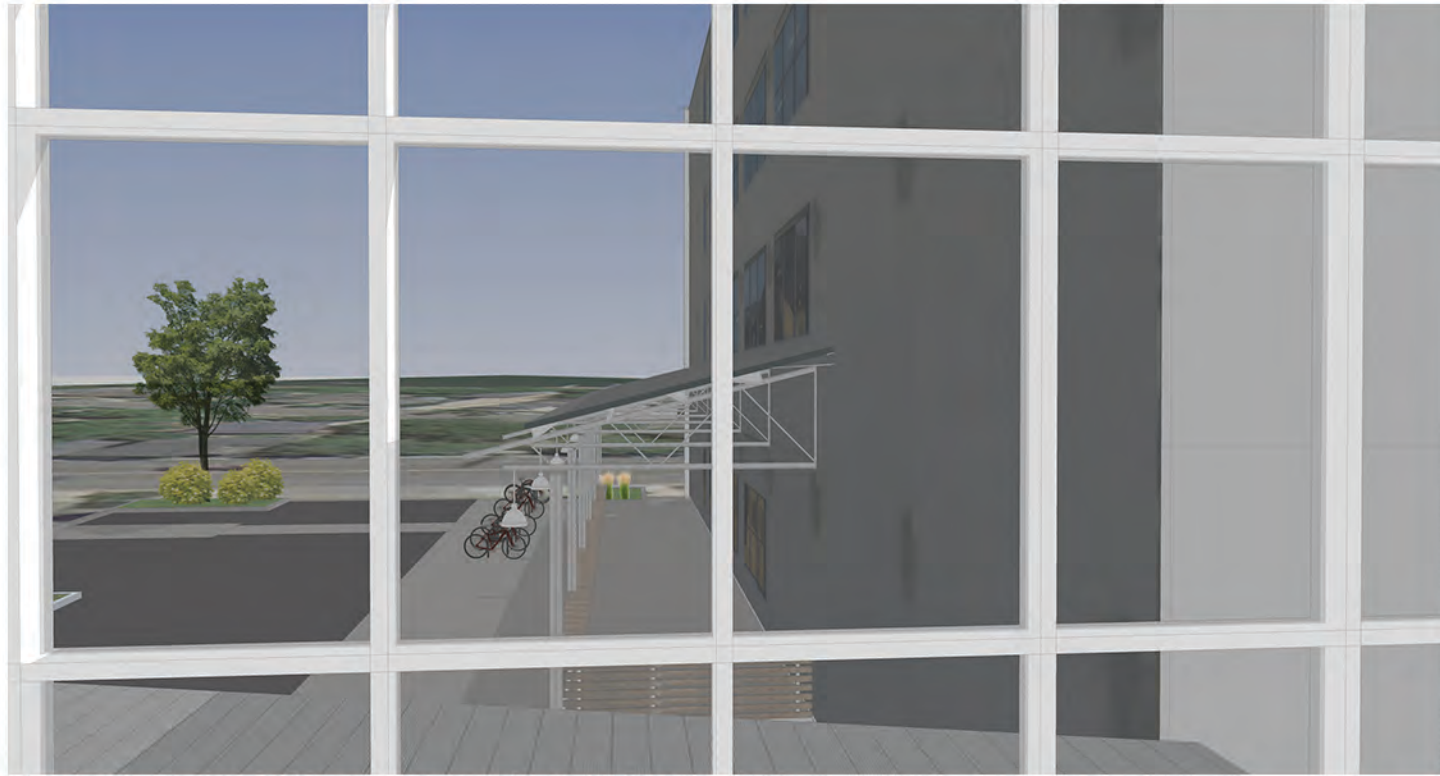
722 Williamson Street

Scale: NTS

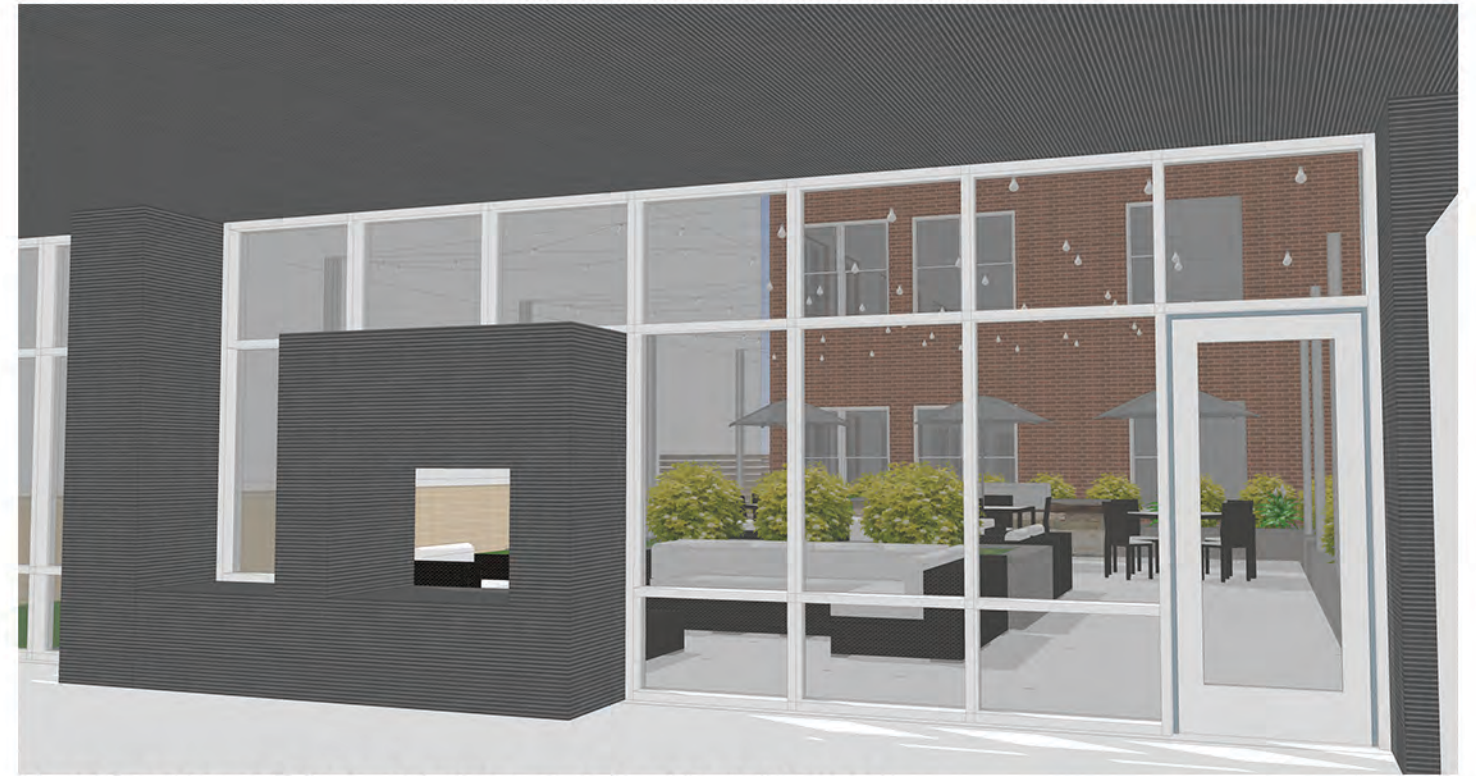
January 27, 2016 - UDC Informational Submittal

© 2016

Cās₄
architecture, llc



View from Second Floor of Lantern back to Promenade



View from Second Floor of Lantern out to Residential Terrace



View from Residential Terrace back to Second Floor of Lantern



View from Residential Terrace back to Second Floor of Lantern

15003.00

Building Images

722 Williamson Street

Scale: NTS

January 27, 2016 - UDC Informational Submittal

© 2016

Cās₄
architecture, llc



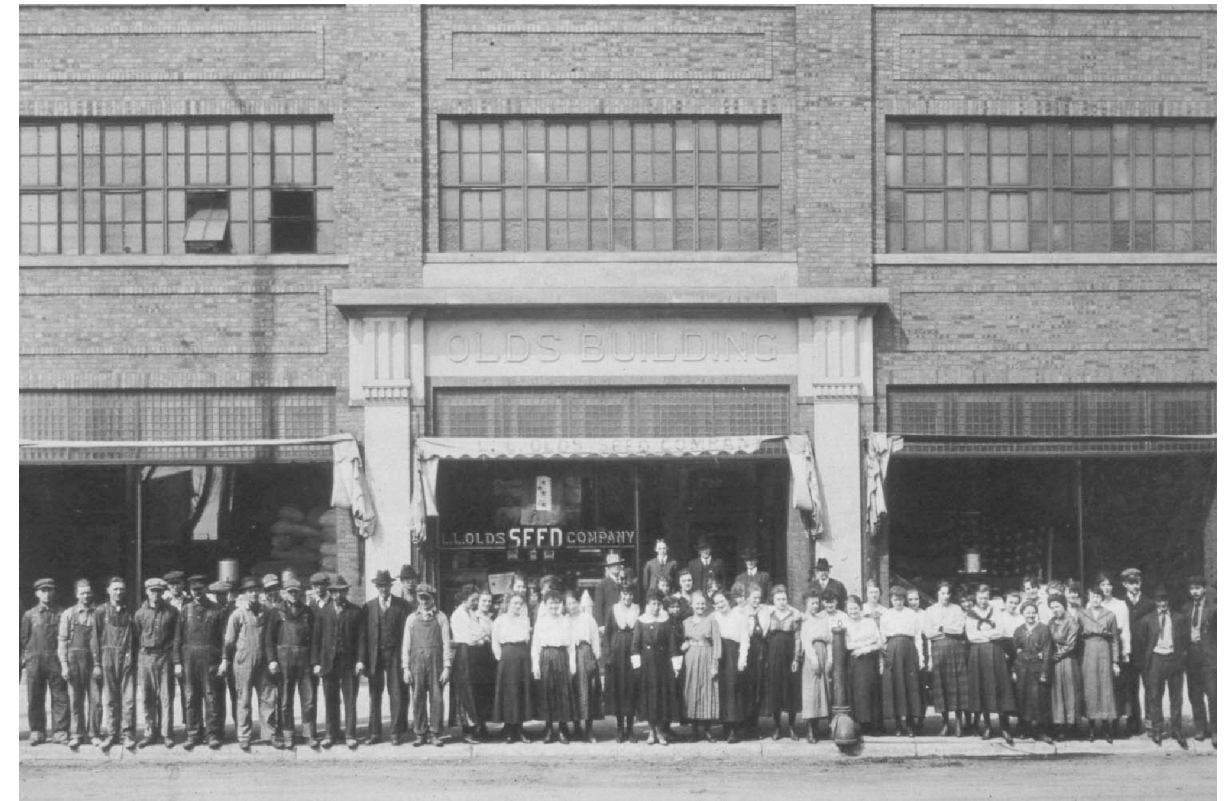
Proposed Renovation of Williamson Street Elevation



Early Photos of Williamson Street Elevation



Existing Renovation of Williamson Street Elevation



Early Photos of Williamson Street Elevation

Olds Seed Building Williamson Street Elevation

722 Williamson Street
Scale: 1/16" = 1' - 0"

January 27, 2016 - UDC Informational Submittal

15003.00



Cās₄
architecture, llc