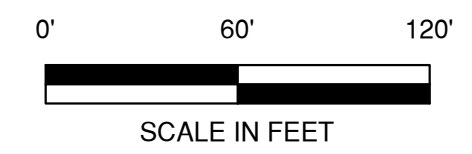
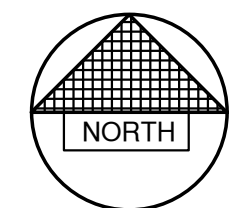




FILE: P:\A\2023\6258019\060\CS6258019.dwg
 PLOT DATE: Aug 14, 2023 - 10:11am
 LAYOUT: OVERALL EXISTING

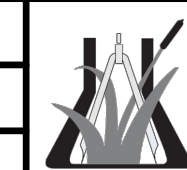


| NO. | DATE | APPROV. | REVISION | NO. | DATE | APPROV. | REVISION | DRAWN BDR |
|-----|------|---------|----------|-----|------|---------|----------|-----------------|
| | | | | | | | | CHECKED |
| | | | | | | | | DESIGNED BDR |

3913 LIEN ROAD SITE IMPROVEMENT PLAN
 FOR CLUB CAR WASH
 CITY OF MADISON
 DANE COUNTY, WISCONSIN

OVERALL EXISTING MAP

| |
|--------------------|
| DATE 01/2023 |
| FILE 6258019T |
| JOB NO. 6258019 |



Robert E. Lee & Associates, Inc.
 ENGINEERING, SURVEYING, ENVIRONMENTAL SERVICES
 1250 CENTENNIAL CENTRE BOULEVARD HOBART, WI 54155
 920-662-9641 www.releinc.com

SHEET NO.
0

E. WASHINGTON AVE.

- LEGEND**
- HEATED CONCRETE PAVEMENT (LIGHT) (S.F.)
 - CONCRETE PAVEMENT (LIGHT) (S.F.)
 - CONCRETE PAVEMENT (HEAVY) (S.F.)
 - ASPHALT PAVEMENT (LIGHT) (S.F.)
 - LANDSCAPE AREA
 - GREEN SPACE
 - PROPOSED 18" STANDARD CURB AND GUTTER
 - PROPOSED 18" STANDARD SHEDDING CURB AND GUTTER
 - PROPOSED 18" MOUNTABLE CURB AND GUTTER
 - PROPOSED 18" MOUNTABLE SHEDDING CURB AND GUTTER
 - TRAFFIC FLOW ARROW
 - HANDICAPPED PARKING
 - INDICATES NUMBER OF PARKING STALLS
 - WALL PACK
 - LIGHT POLE (1 LAMP)
 - LIGHT POLE (2 LAMPS)
 - LIGHT POLE (3 LAMPS)
 - LIGHT POLE (4 LAMPS)

*NOTE: ALL DIMENSIONS ARE TO THE FACE OF CURB, UNLESS NOTED OTHERWISE

NOTE
ALL DISTURBED AREAS SHALL BE TOPSOILED TO A DEPTH OF 6 INCHES, SEEDED AND MULCHED. AREA TO BE RAKED FREE OF STONES AND CLUMPS.

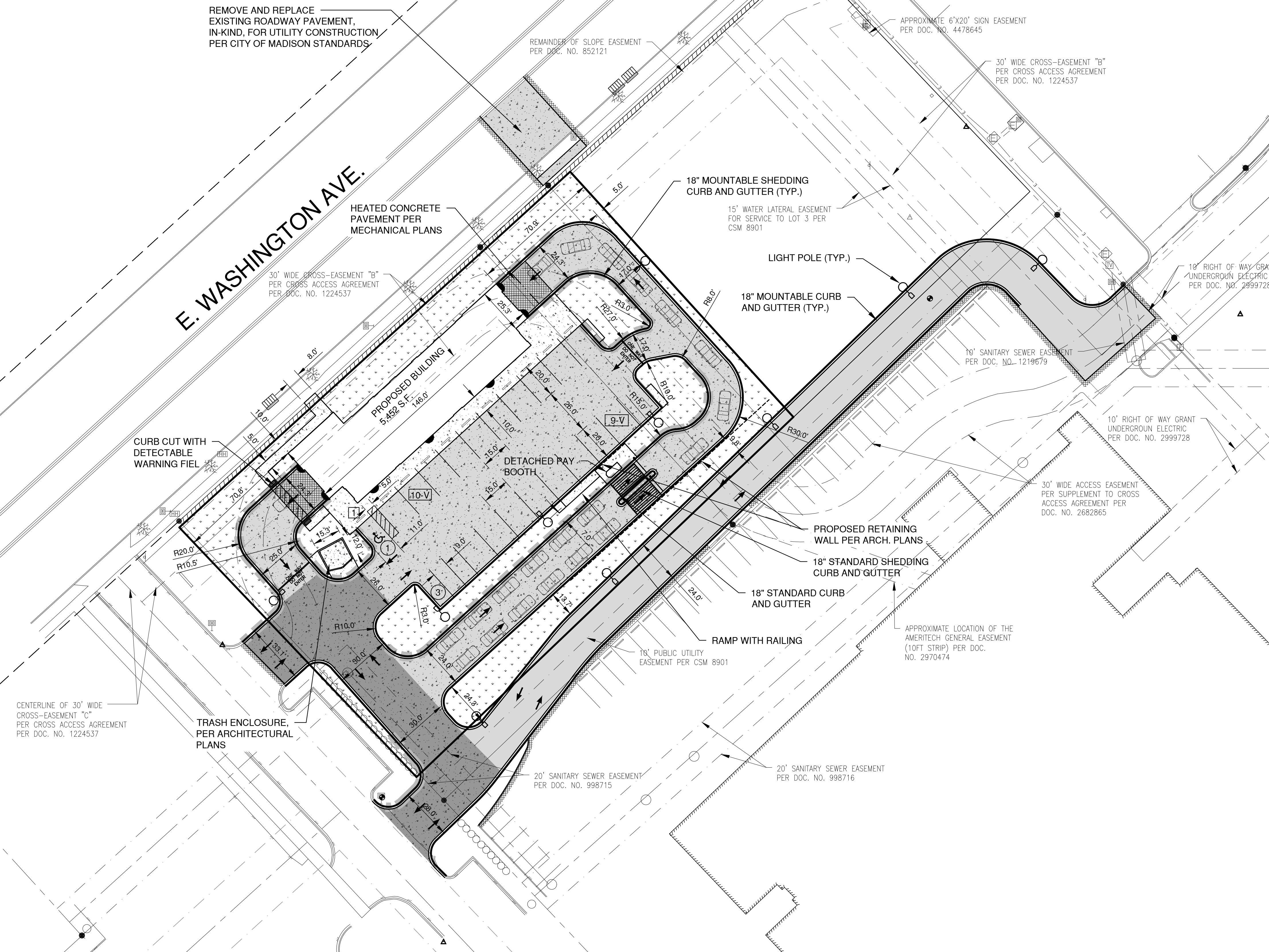
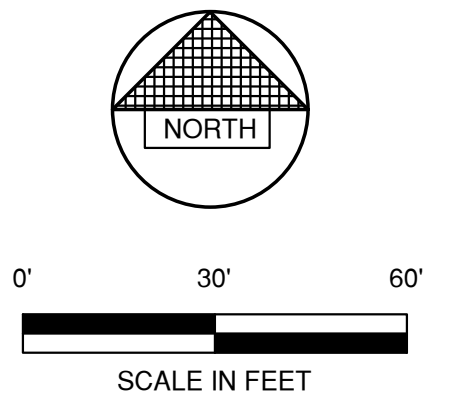
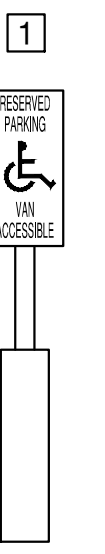
PARKING DATA
TOTAL PARKING STALLS PROVIDED = 4
HANDICAP ACCESSIBLE PARKING STALLS = 1
TOTAL PARKING STALLS REQUIRED = 3

SITE DATA - PROPOSED LOT
TOTAL AREA = 1.23 ACRES, 53,594 S.F.
BUILDING AREA = 0.13 ACRES, 5,540 S.F. (10.3%)
SIDEWALK/PARKING LOT AREA = 0.77 ACRES, 33,495 S.F. (62.5%)
GREEN SPACE = 0.33 ACRES, 14,559 S.F. (27.2%)

ZONING
COMMERCIAL CORRIDOR - TRANSITIONAL DISTRICT

PARCEL NO.
PROPOSED CSM

PROPERTY ADDRESS
3909 - 3913 LIEN ROAD



FILE: P:\A\2020\4258\4258019\DWG\42580190.dwg
PLOT DATE: May 26, 2023 11:08am
SITE
LAYOUT

| NO. | DATE | APPROV. | REVISION | NO. | DATE | APPROV. | REVISION |
|-----|------|---------|----------|-----|------|---------|----------|
| | | | | | | | |
| | | | | | | | |
| | | | | | | | |

3913 LIEN ROAD SITE IMPROVEMENT PLAN
FOR CLUB CAR WASH
CITY OF MADISON
DANE COUNTY, WISCONSIN

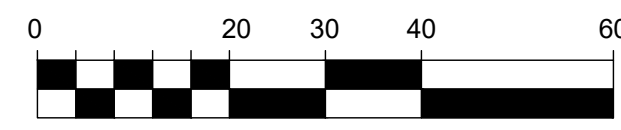
SITE PLAN

| | |
|---------|----------|
| DATE | 05/20/23 |
| FILE | 6258019D |
| JOB NO. | 6258019 |

REL Robert E. Lee & Associates, Inc.
1250 Centennial Centre Blvd | Hobart, WI | 920-662-9641 | releinc.com

SHEET NO.
3

LANDSCAPE PLAN



1" = 20'



LANDSCAPE INSTALLATION NOTES:

GENERAL:
 -Landscape contractor is responsible for coordinating work with general contractor to ensure the landscape scope of work doesn't interfere with existing or built conditions. They should note any discrepancies to the general contractor.

-Landscape contractor is responsible for verifying the location of underground utilities by calling their local utility marking service.

-All plant material should be inspected by Landscape Contractor prior to installation to determine overall appearance and condition. Plant material that is damaged or has clear signs of stress should be rejected.

-Quantities of material shown on plan take precedence over the specification list or legend.

-If plant substitutions are required, Landscape Contractor is responsible for submitting recommendations to the client or client's representative.

PLANTING:
 -When excavating for plant pits, any excess rock or building material should be removed and replaced with specified soil mix backfill.

-All plant tags should be removed from material by landscape contractor.

-All planting beds should receive a minimum 3" deep layer of shredded hardwood mulch, unless otherwise noted.

-Edge all beds with a spade cut edge unless otherwise noted.

-All backfill around plant material rootballs should receive a soil mix of 4 parts (pulverized) topsoil to 1 part fine, organic compost.

-All wire baskets and stakes should be removed during planting.

-Cut and remove top half of burlap around rootballs and cut and remove any twine around trunk or root flare.

-All stakes and guy wires and tree wrap are to be removed no more than 1 year after installation.

PLANT SCHEDULE

| TREES | QTY | COMMON NAME / BOTANICAL NAME | SIZE |
|-------|-----|--|------|
| ACE | 8 | Acer x freemanii 'Autumn Blaze' | 2.5" |
| GLE | 8 | Gleditsia triacanthos f. inermis 'Skycole' SKYLINE | 2.5" |
| QUE | 7 | Quercus rubra | 2.5" |

| SHRUBS | QTY | COMMON NAME / BOTANICAL NAME | SIZE |
|--------|-----|------------------------------------|------|
| JUN | 39 | Juniperus x pfizeriana 'Sea Green' | #3 |
| OWL | 13 | Juniperus virginiana 'Grey Owl' | #3 |
| SPI | 10 | Spirea japonica | #3 |
| ROS | 16 | Rosa 'Meigalpio' PP #17,877 | #3 |
| PAN | 29 | Panicum virgatum 'Heavy Metal' | #1 |

PLANT LEGEND:

| | |
|--|----------------------------|
| | MAPLE 'AUTUMN BLAZE' |
| | HONEYLOCUST 'SKYLINE' |
| | OAK 'NORTHERN RED' |
| | JUNIPER 'SEA GREEN' |
| | JUNIPER 'GREY OWL' |
| | SPIREA, JAPONICA |
| | ROSE 'RED DRIFT' |
| | SWITCH GRASS 'HEAVY METAL' |

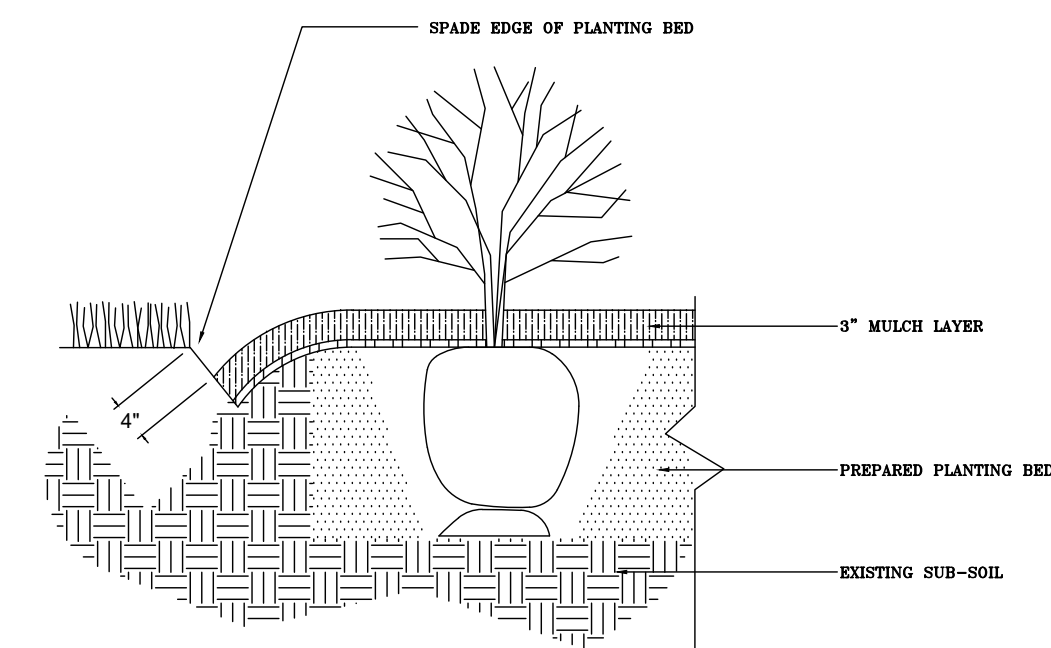
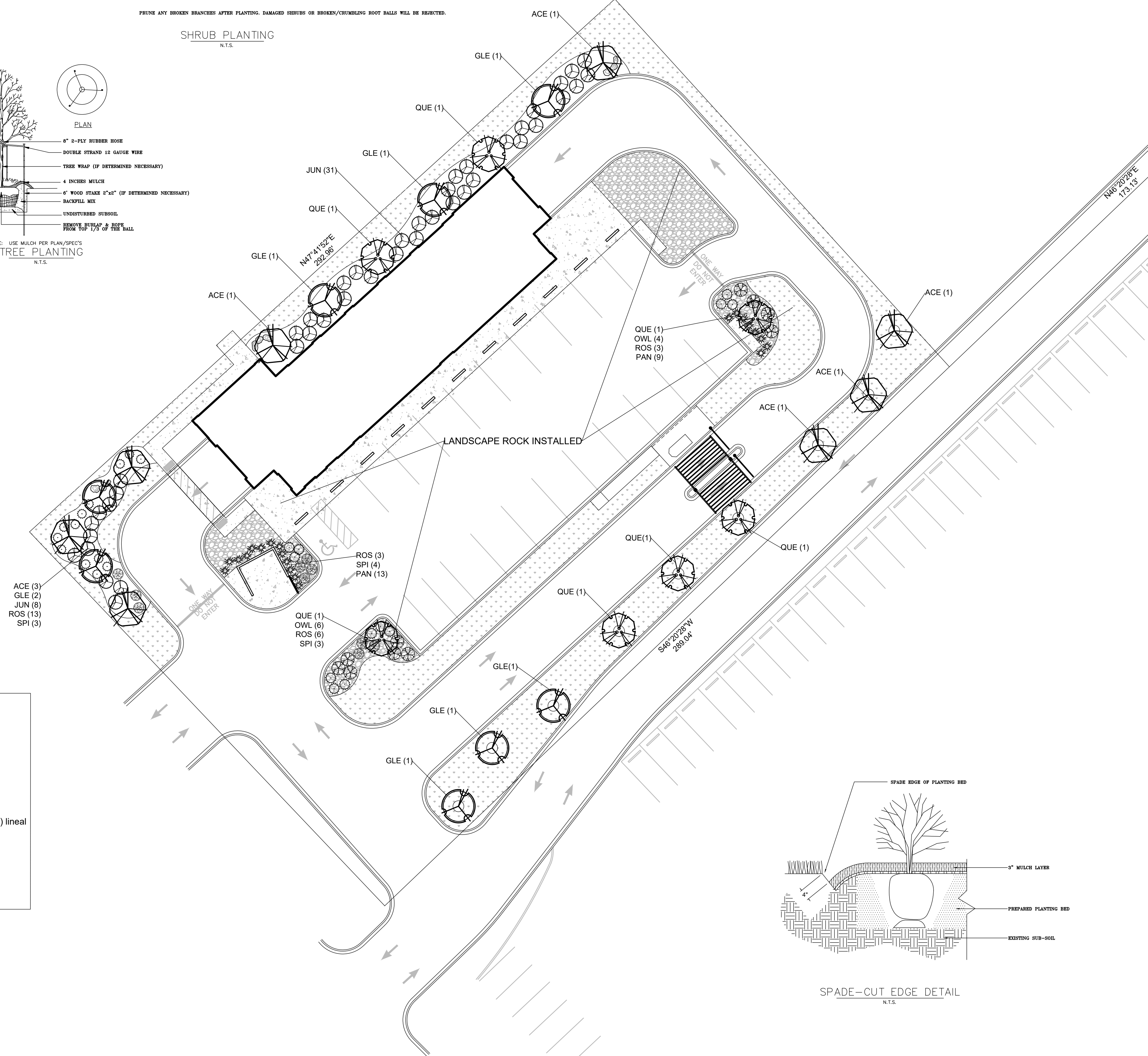
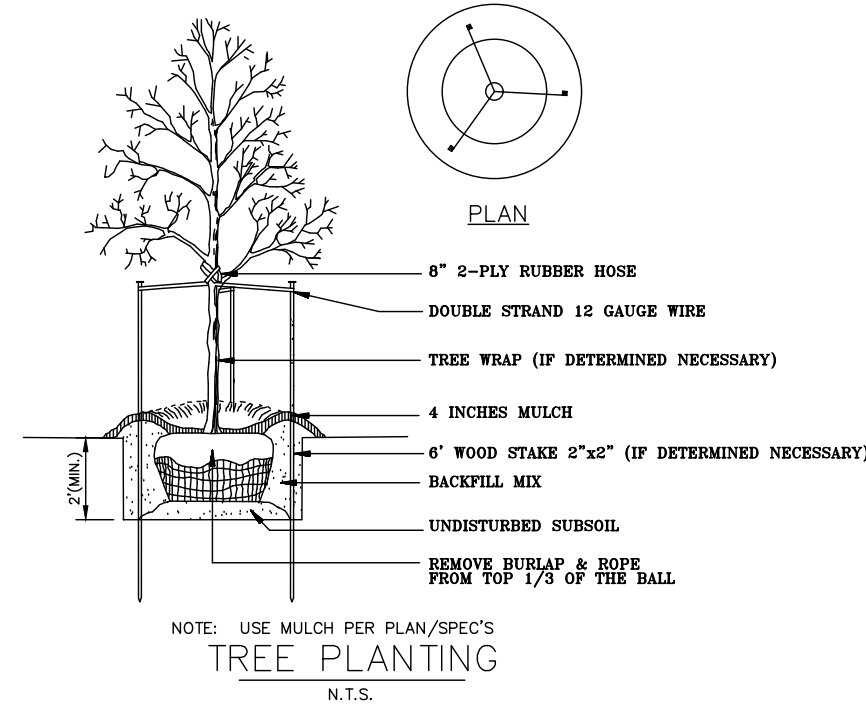
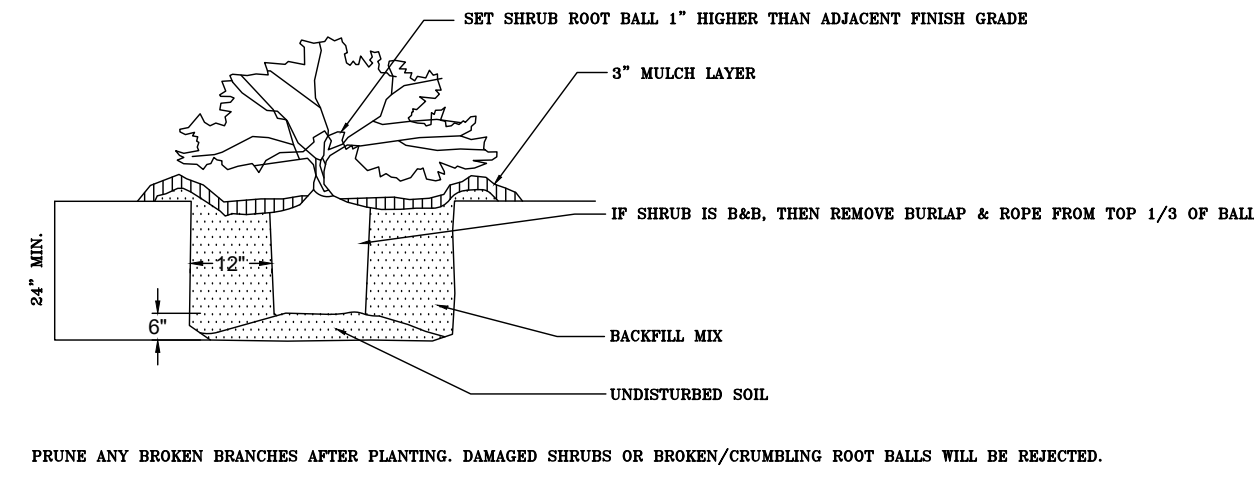
LANDSCAPE REQUIREMENTS:

| | | |
|----------------------|---|-------------|
| TOTAL AREA | = | 53,594 S.F. |
| BUILDING AREA | = | 5,540 S.F. |
| SIDEWALK/PARKING LOT | = | 33,495 S.F. |
| GREEN SPACE | = | 14,559 S.F. |
| TOTAL PARKING STALLS | = | 4 PROVIDED |

Five (5) landscape points shall be provided for each three hundred (300) square feet of developed area.

One (1) overstory deciduous tree and five (5) shrubs shall be planted for each thirty (30) lineal feet of lot frontage.

| | | |
|-----------------------|---|-------------|
| DEVELOPED AREA | = | 48,054 S.F. |
| TOTAL POINTS REQUIRED | = | 801 Pts. |
| TOTAL FRONTAGE | = | 288 L.F. |
| TOTAL POINTS PROVIDED | = | 1,025 Pts. |



Elevate Outdoor LLC.
 1112 Bryan Road
 O'Fallon, MO 63366
 636-946-1313
 www.elevate-outdoor.com

Club Car Wash
 3913 Lien Road
 Madison, Wisconsin 53704

This drawing is conceptual and is only to be used as a guide for construction. The completed project may differ from this plan in appearance and dimension.

This drawing is the instrument of service and the intellectual property of Elevate Outdoor LLC. This plan is not to be reproduced, changed, or copied in any matter, nor is it to be assigned to any third party. Use of this plan or any of its elements without written permission and consent of Elevate Outdoor LLC is expressly prohibited.

Drawing Completed:

| |
|-----------|
| 8-12-2022 |
| 5-5-2023 |
| 5-24-2023 |
| 5-25-2023 |

Landscape Plan

EXTERIOR MATERIAL LEGEND

| | | |
|--|---|--|
| CMU ARCHITECTURAL 8" CMU SPLIT FACE BLOCK COLOR: Blackened Ash (01-064A) | GL-1 ALUMINUM STOREFRONT GLAZING SYSTEM 2"x4 1/2" Thermal Storefront Framing in Black Painted Aluminum, w/ 1" Insulated LOW-E Tinted Glazing Unit | S/DS PREFINISHED KYNAR-COATED SHEET METAL SCUPPER AND DOWNSPOUTS (COLOR: Matte Black) |
| EIFS-1 EXTERIOR INSULATED FINISH SYSTEM COLOR: SW6070 Heron Plume | GL-2 2"x2 1/4" Thermal Storefront Framing in Black Painted Aluminum, w/ 1/4" LOW-E spandrel Glazing Unit | MTL PREFINISHED KYNAR COATED METAL COPING (COLOR: Matte Black) |
| EIFS-2 EXTERIOR INSULATED FINISH SYSTEM COLOR: to match CMU, Blackened Ash (01-064A) | AWN PREFABRICATED PAINTED FLAT METAL AWNING (COLOR: Master Paint - Hotrod - MP10224) | ROOF SINGLE PLY TPO OVER TAPERED INSULATION (COLOR: White) STANDING SEAM METAL ROOF WITH METAL FASCIA (COLOR: Matte Black) |

FIRST FLOOR NORTH ELEVATION

AREA = 1,555 SF
LENGTH = 146'-0"

GLAZING:
REQUIRED AREA = 622 SF
PROVIDED AREA = 853 SF

REQUIRED LENGTH = 87' - 8"
PROVIDED LENGTH = 89' - 4"



NORTH ELEVATION | 3/32" = 1'-0"



SOUTH ELEVATION | 3/32" = 1'-0"

EXTERIOR MATERIAL LEGEND

| | | | | | |
|---------------|--|-------------|---|-------------|--|
| CMU | ARCHITECTURAL 8" CMU SPLIT FACE BLOCK COLOR: Blackened Ash (01-064A) | GL-1 | ALUMINUM STOREFRONT GLAZING SYSTEM 2"x4 1/2" Thermal Storefront Framing in Black Painted Aluminum, w/ 1" Insulated LOW-E Tinted Glazing Unit | S/DS | PREFINISHED KYNAR-COATED SHEET METAL SCUPPER AND DOWNSPOUTS (COLOR: Matte Black) |
| EIFS-1 | EXTERIOR INSULATED FINISH SYSTEM COLOR: SW6070 Heron Plume | GL-2 | 2"x 2 1/4" Thermal Storefront Framing in Black Painted Aluminum, w/ 1/4" LOW-E spandrel Glazing Unit | MTL | PREFINISHED KYNAR COATED METAL COPING (COLOR: Matte Black) |
| EIFS-2 | EXTERIOR INSULATED FINISH SYSTEM COLOR: to match CMU, Blackened Ash (01-064A) | AWN | PREFABRICATED PAINTED FLAT METAL AWNING (COLOR: Master Paint - Hotrod - MP10224) | ROOF | SINGLE PLY TPO OVER TAPERED INSULATION (COLOR: White) STANDING SEAM METAL ROOF WITH METAL FASCIA (COLOR: Matte Black) |



EAST ELEVATION | 3/32" = 1'-0"



WEST ELEVATION | 3/32" = 1'-0"

EXTERIOR COLOR PALETTE

ARCHITECTURAL 8" CMU SMOOTH FACE BLOCK
COLOR: Blackened Ash (01-064A)

EXTERIOR INSULATED FINISH SYSTEM (EIFS)
COLOR: Blackened Ash (01-064A)

METAL AWNINGS
COLOR: Red

EXTERIOR INSULATED FINISH SYSTEM (EIFS)
COLOR: SW6070 Heron Plume

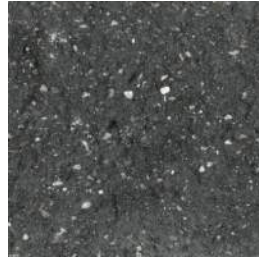
STOREFRONT
COLOR: Black Painted

SCUPPERS, DOWNSPOUTS, AND METAL COPINGS
COLOR: Kynar Finish Matte Black

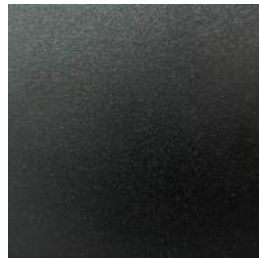


CLUB CAR WASH RENDERING





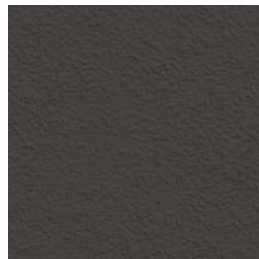
ARCHITECTURAL 8" CMU SMOOTH
FACE BLOCK
COLOR: Blackened Ash (01-064A)
CMU



SCUPPERS, DOWNSPOUTS, AND
METAL COPINGS
COLOR: Kynar Finish Matte Black
S/DS
MTL
ROOF



EXTERIOR INSULATED FINISH SYSTEM
(EIFS)
COLOR: SW6070 Heron Plume
EIFS-1



EXTERIOR INSULATED FINISH SYSTEM
(EIFS) - ACCENT COLOR
COLOR: TO MATCH Blackened Ash (01-064A)
EIFS-2



METAL AWNINGS
COLOR: MASTER PAINT - HOTROD
RED (MP10224)
AWN



STOREFRONT
COLOR: Black Painted Frames
GL-1
GL-2



CLUB CAR WASH RENDERING + MATERIAL PALETTE



Existing Site looking East



Existing Site looking Southwest

Club Car Wash Similar Site Comparison Photos

