

# Transportation Organizational Structures

Heather Allen  
Legislative Analyst

April 27, 2016

Transportation Organizational Review Committee

# What we will cover tonight

- ◎ A review of data and methodologies
- ◎ Deep dive into selected cities
- ◎ Comparison of 30 mid-size cities
  - > Transportation Department (Y/N)
  - > Rankings
- ◎ Trends and Themes
- ◎ Questions and answers

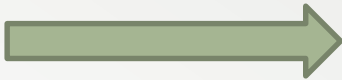
# The Best Cities for Public Transportation

BY THE 1-2-3 NUMBERS

## THE BEST CITIES FOR PUBLIC TRANSPORTATION

Rank	City	Average Commute Time (Minutes)			Population Using Transit	Income Difference for Transit Users	Index
		Cars	Transit	Difference			
1	Washington, DC	27.8	36.4	31%	36 %	-4 %	100.00
2	San Francisco, CA	30.0	40.3	34%	34 %	-4 %	98.12
3	Boston, MA	29.2	39.8	36%	34 %	-13 %	96.63
4	Chicago, IL	33.2	43.6	31%	28 %	-9 %	95.84
5	New York, NY	32.6	48.1	48%	57 %	-2 %	93.96
6	Seattle, WA	25.0	38.9	56%	21%	-14 %	93.56
7	Jersey City, NJ	30.2	46.3	53%	49 %	16 %	93.37
8	Pittsburgh, PA	23.3	32.4	39%	17%	-18 %	93.17
9	Philadelphia, PA	30.1	44.0	46%	27%	-16 %	92.87
10	Oakland, CA	27.0	44.3	64%	21%	-2 %	90.59

Rank	City	Average Commute Time (Minutes)			Population Using Transit	Income Difference for Transit Users	Index
		Cars	Transit	Difference			
10	Oakland, CA	27.0	44.3	64 %	21 %	-2 %	90.59
11	Portland, OR	23.0	40.8	77 %	12 %	-16 %	86.63
12	Minneapolis, MN	21.6	37.8	75 %	14 %	-38 %	82.48
13	Madison, WI	18.7	32.2	72 %	10 %	-33 %	80.40
14	Newark, NJ	30.2	54.5	80 %	26 %	-18 %	78.61
15	Denver, CO	23.7	43.0	81 %	7 %	-34 %	76.63
16	St. Paul, MN	21.8	39.9	83 %	10 %	-34 %	76.04
17	Honolulu, HI	21.4	41.4	93 %	12 %	-36 %	75.15
18	Los Angeles, CA	28.3	48.6	72 %	11 %	-43 %	74.65
19	Baltimore, MD	26.1	49.2	89 %	19 %	-35 %	74.55
20	Salt Lake City, UT	18.1	33.5	85 %	7 %	-28 %	72.77
21	Santa Ana, CA	23.3	41.5	78 %	5 %	-32 %	71.88
22	Richmond, VA	20.1	35.9	79 %	6 %	-37 %	70.50
23	Houston, TX	25.2	46.1	83 %	4 %	-39 %	68.12
24	Cleveland, OH	21.9	44.7	104 %	11 %	-34 %	67.82
25	Buffalo, NY	19.2	39.9	108 %	11 %	-38 %	66.14

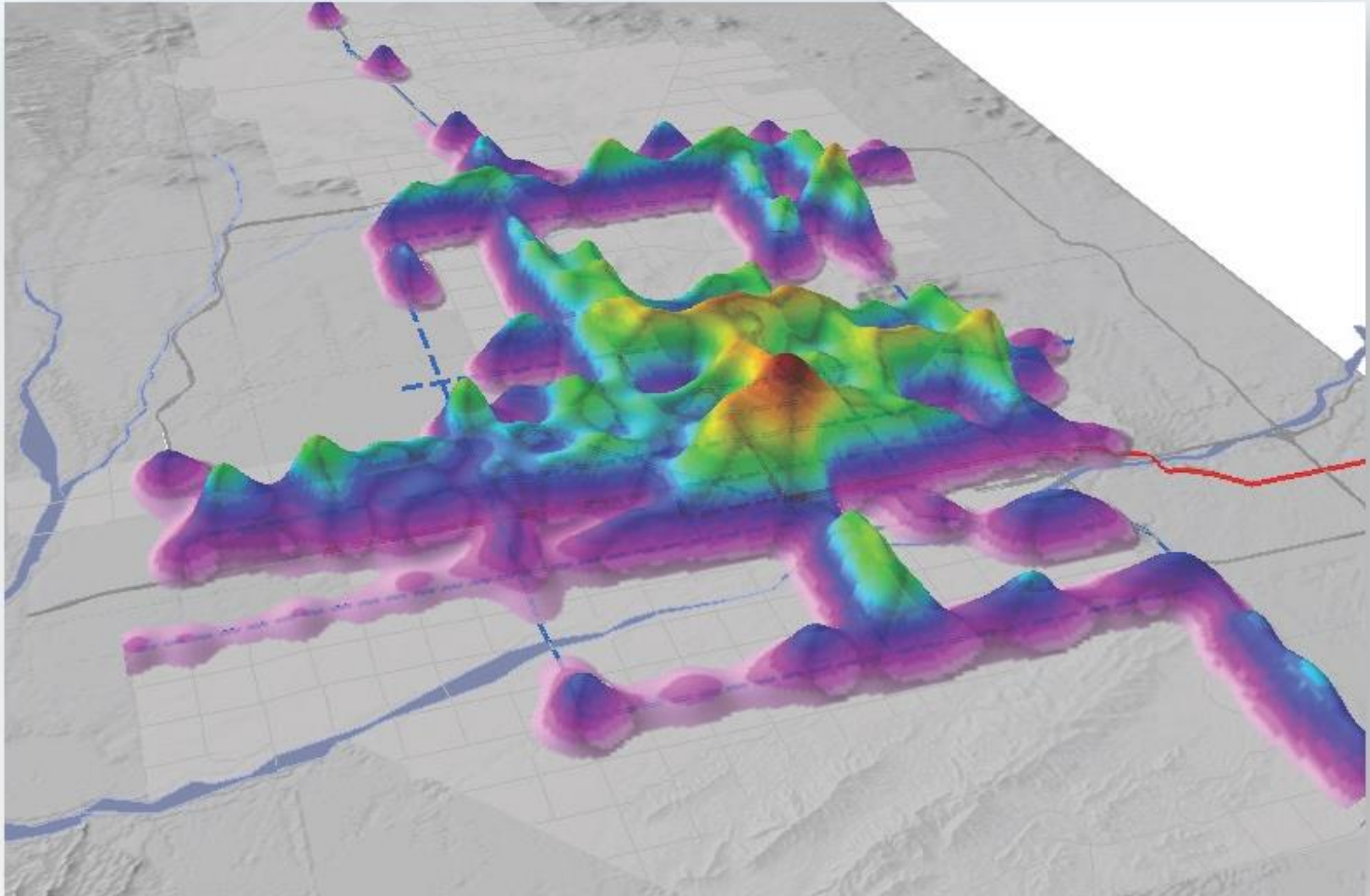


# Walk Score.com

## Data Products

- **Walk Score**  
Measures walkability on a scale from 0 - 100 based on walking routes to destinations such as grocery stores, schools, parks, restaurants, and retail.
- **Transit Score**  
Measures transit accessibility on a scale from 0 - 100. Calculates distance to closest stop on each route, analyzes route frequency and type.
- **Bike Score**  
Measures bike accessibility on a scale from 0 - 100 based on bike infrastructure, topography, destinations and road connectivity.

# How Walk Score Is Utilized

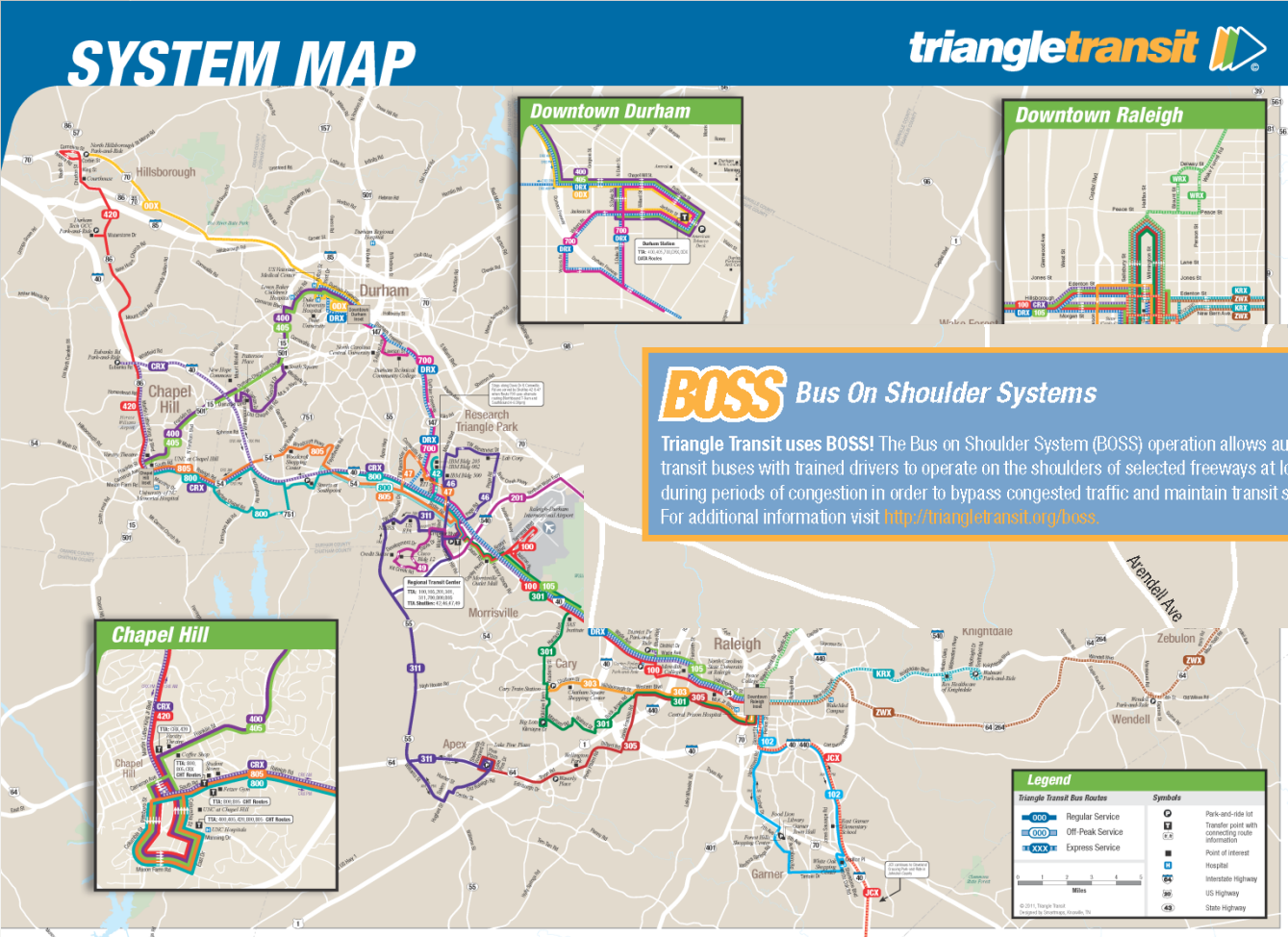


Walk Score of transit stations in Phoenix, AZ

## ◎ Selected Cities

- > Raleigh, North Carolina
- > Milwaukee County, Wisconsin
- > Buffalo, New York
- > Madison, Wisconsin
- > Minneapolis, Minnesota
- > Portland, Oregon

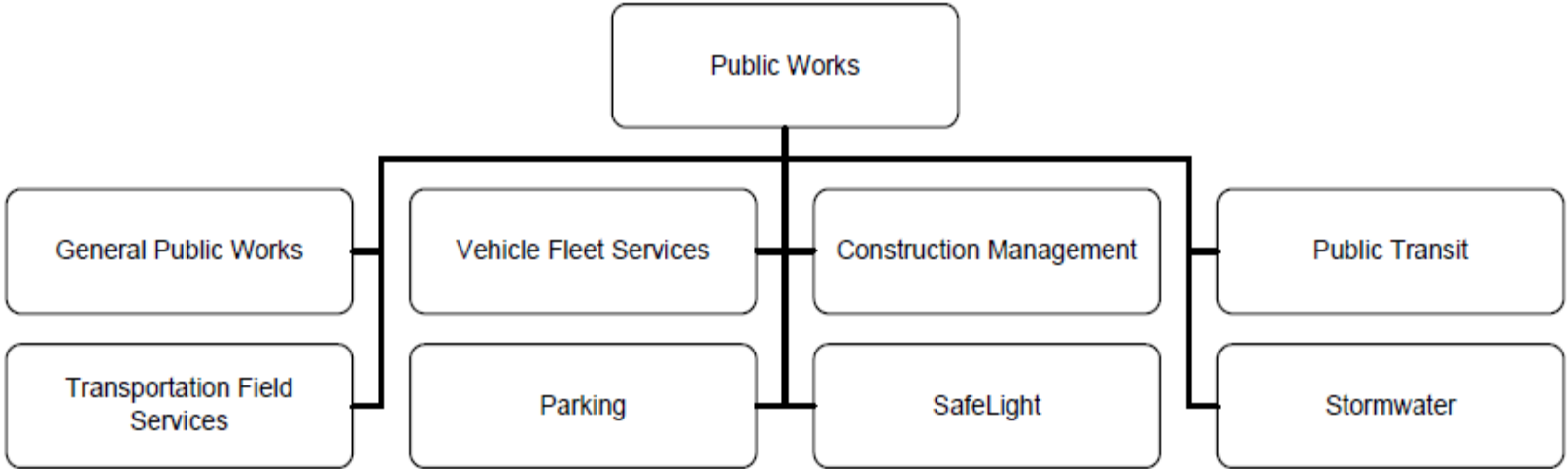
# Raleigh, North Carolina





# Raleigh, North Carolina

## SYSTEM MAP





# Milwaukee County



Private

- The City of Milwaukee transit was managed by a private company
- The private company was struggling to achieve its goals

Contracts

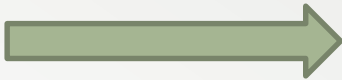
- 1975 the County took over the transit assets (buses & depots) of the that company and contracted for services
- The Managing Director ran the contracts

Government

- Today \$158 million is allocated from the County to the transit system allowing it to react in real time.
- Mke County Transport Services (MTS) is a government corporation managing and operating public transport system.



Rank	City	Average Commute Time (Minutes)			Population Using Transit	Income Difference for Transit Users	Index
		Cars	Transit	Difference			
10	Oakland, CA	27.0	44.3	64 %	21 %	-2 %	90.59
11	Portland, OR	23.0	40.8	77 %	12 %	-16 %	86.63
12	Minneapolis, MN	21.6	37.8	75 %	14 %	-38 %	82.48
13	Madison, WI	18.7	32.2	72 %	10 %	-33 %	80.40
14	Newark, NJ	30.2	54.5	80 %	26 %	-18 %	78.61
15	Denver, CO	23.7	43.0	81 %	7 %	-34 %	76.63
16	St. Paul, MN	21.8	39.9	83 %	10 %	-34 %	76.04
17	Honolulu, HI	21.4	41.4	93 %	12 %	-36 %	75.15
18	Los Angeles, CA	28.3	48.6	72 %	11 %	-43 %	74.65
19	Baltimore, MD	26.1	49.2	89 %	19 %	-35 %	74.55
20	Salt Lake City, UT	18.1	33.5	85 %	7 %	-28 %	72.77
21	Santa Ana, CA	23.3	41.5	78 %	5 %	-32 %	71.88
22	Richmond, VA	20.1	35.9	79 %	6 %	-37 %	70.50
23	Houston, TX	25.2	46.1	83 %	4 %	-39 %	68.12
24	Cleveland, OH	21.9	44.7	104 %	11 %	-34 %	67.82
25	Buffalo, NY	19.2	39.9	108 %	11 %	-38 %	66.14



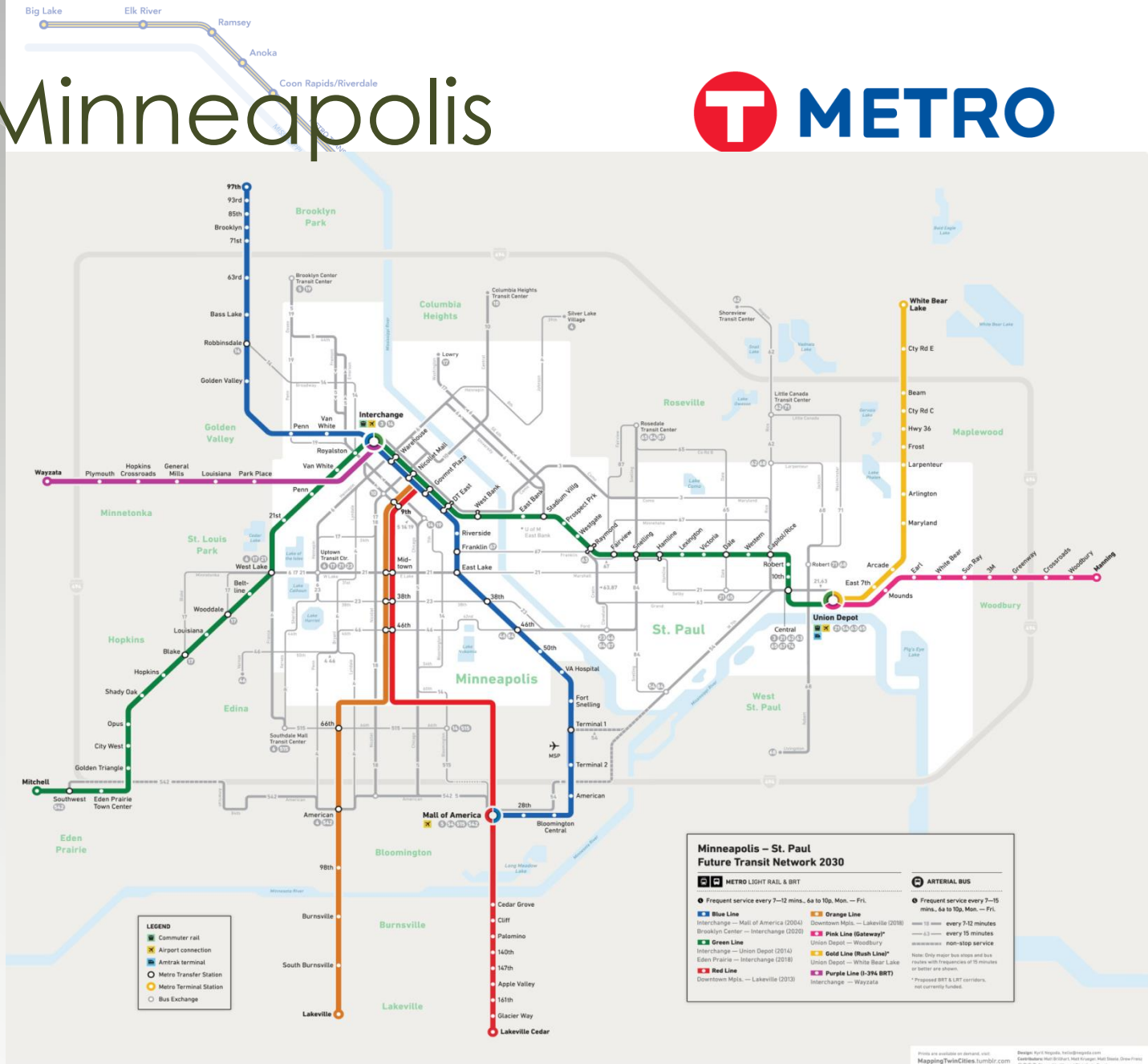
City	Est. Pop.	Is there a Dept. of Transportation?	Is there one Director or Lead of the Dept?	Transit Score	Bike Score	Walk Score	Rank Best Cities for Public Transit
Buffalo, NY	258,703	No	No	50	54	65	25
Madison, WI	245,691	No	No	38	73	47	13
Minneapolis, MN	407,207	No	No	58	81	65	12
Portland, OR	619,360	<a href="#">Yes</a>	Yes	51	72	63	11



# Madison



# Minneapolis



**LEGEND**

- Commuter rail
- Airport connection
- Antrak terminal
- Metro Transfer Station
- Metro Terminal Station
- Bus Exchange

**Minneapolis - St. Paul Future Transit Network 2030**

**METRO LIGHT RAIL & BRT**

- Blue Line**: Frequent service every 7-12 mins., 6a to 10p, Mon - Fri.
- Orange Line**: Frequent service every 7-15 mins., 6a to 10p, Mon - Fri.
- Green Line**: Interchange - Union Depot (2014), Edina Prairie - Interchange (2018).
- Red Line**: Downtown Mpls. - Lakeville (2013).
- Purple Line (BRT)**: Interchange - Wayzata.
- Pink Line (Gateway)**: Union Depot - Woodbury.
- Gold Line (Rush Line)**: Union Depot - White Bear Lake.

**ARTERIAL BUS**

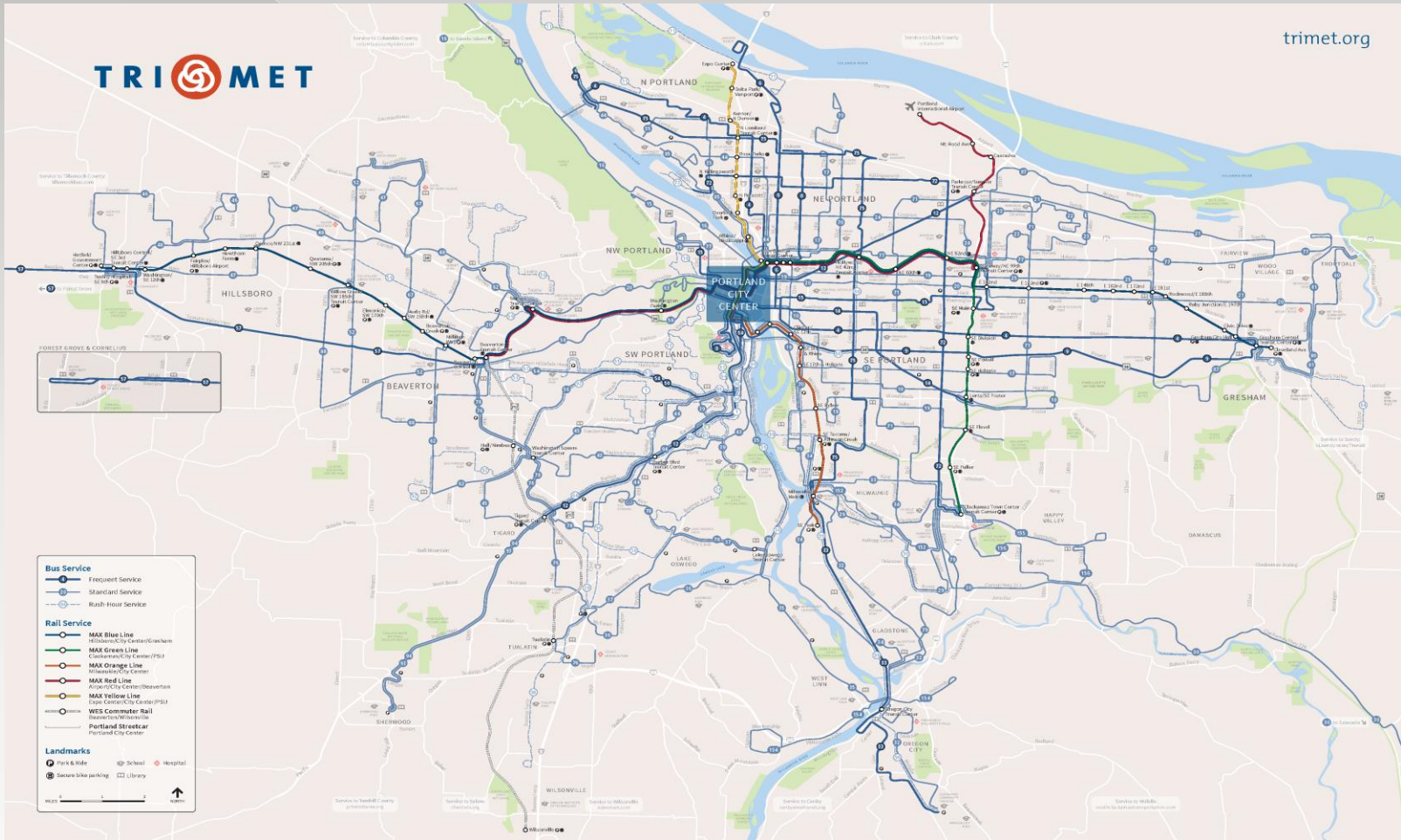
- 10 min every 7-12 minutes
- 15 min every 15 minutes
- non-stop service

Note: Only major bus stops and bus routes with frequencies of 15 minutes or better are shown.  
\* Proposed BRT & LRT corridors, not currently funded.

Photos are available on demand, visit [www.mappingtwincities.com](http://www.mappingtwincities.com).  
 Design: Kurt Hoppe, kurt@hoppe.com  
 Development: Neil Grodsky, neil@hoppe.com; Matt Steiner, matt@hoppe.com  
 © 2014 Union, Antrak and Doherty Group

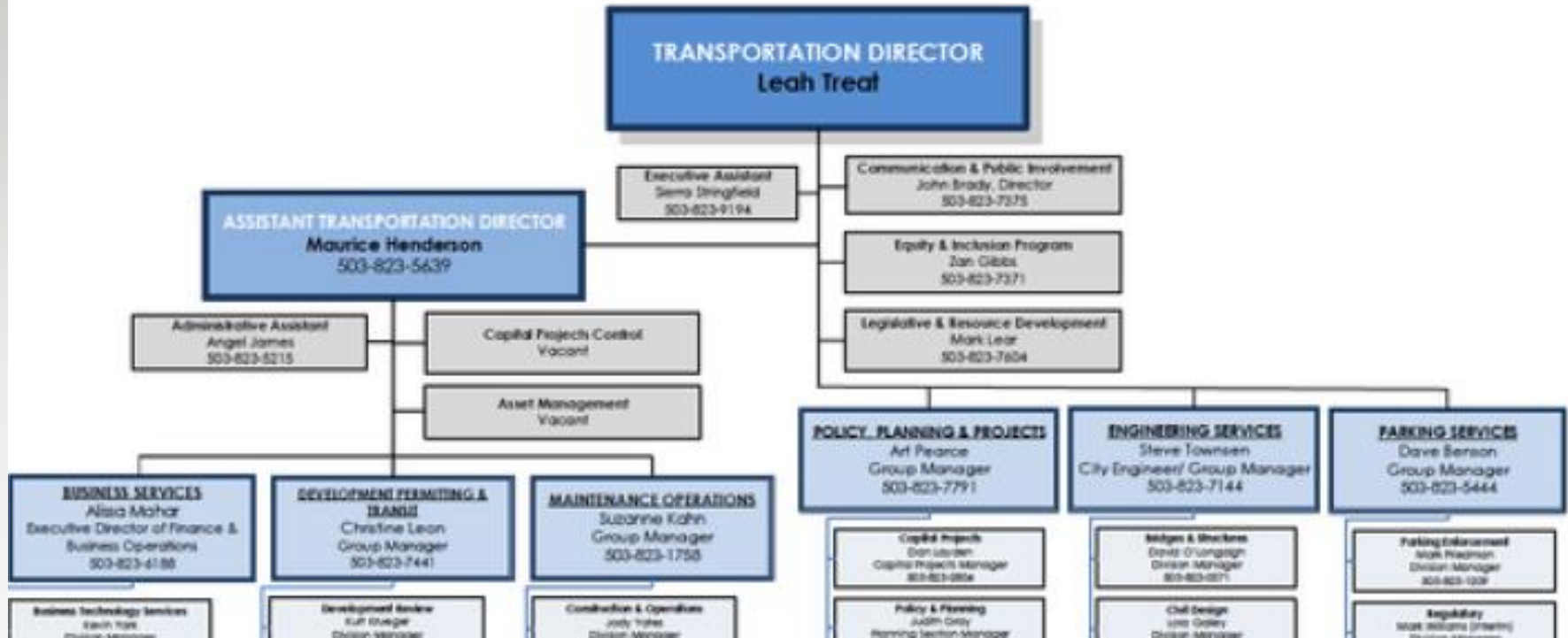


# Portland, Oregon



# Portland, Oregon

## PBOT PORTLAND BUREAU OF TRANSPORTATION



# Portland, Oregon

Office of the Director - Leah Treat

Assistant Director - Maurice Henderson, 503-823-5639

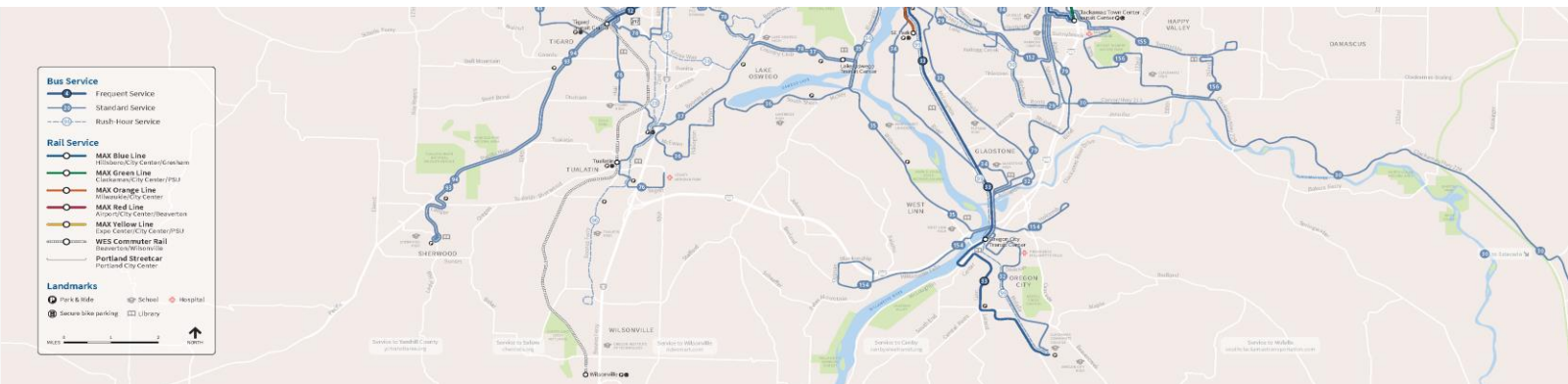
Policy, Planning + Projects - Art Pearce, Group Manager, 503-823-7791

Engineering Services - Steve Townsen, City Engineer/Group Manager, 503-823-7144

Parking Services - Dave Benson, Group Manager, 503-823-5444

Equity + Inclusion - Zan Gibbs, Program Manager, 503-823-7371

Legislative + Resource Development - Mark Lear, 503-823-7604



# Highest Transit Scores

City	Est. Pop.	Is there a Dept. of Transportation?	Is there one Director or Lead of the Department?	Transit Score	Bike Score	Walk Score
Newark, NJ	280,579 (2014)	No	No	65	51	78
Miami, FL	430,332 (2014)	No	No	59	60	76
Arlington, VA	226,908 (2014)	Yes, Division of Transportation	Yes	58	71	67
Minneapolis, MN	407,207 (2014)	No	No	58	81	65
Pittsburgh, PA	305,412 (2014)	No	No	54	40	60
Miami Beach, FL	91,732 (2014)	<a href="#">Yes, Transportation Department</a>	Yes	53		71
Yonkers, NY	200,667 (2014)	No	No	53		71

# Highest Bike Scores

City	Est. Pop.	Is there a Dept. of Transportation?	Is there one Director or Lead of the Department?	Transit Score	Bike Score	Walk Score
Boulder County, CO	313,333 (2014)	<a href="#">Yes, Transportation Division</a>	Yes, Director of Public Works for Transportation	48	86	56
Minneapolis, MN	407,207 (2014)	No	No	58	81	65
Ann Arbor, MI	117,770 (2014)	No, transportation is handled through the regional transportation authority.	No	47	74	49
Madison, WI	245,691 (2014)	No	No	38	73	47
Portland, OR	619,360 (2014)	<a href="#">Yes, Portland Bureau of Transportation</a>	Yes	51	72	63
Arlington, VA	226,908 (2014)	Yes, Division of Transportation	Yes	58	71	67
Lincoln, NE	272,996 (2014)	No	No		62	40

# Highest Walk Scores

City	Est. Pop.	Is there a Dept. of Transportation?	Is there one Director or Lead of the Department?	Transit Score	Bike Score	Walk Score
Newark, NJ	280,579 (2014)	No	No	65	51	78
Miami, FL	430,332 (2014)	No	No	59	60	76
Miami Beach, FL	91,732 (2014)	<a href="#">Yes, Transportation Department</a>	Yes	53		71
Yonkers, NY	200,667 (2014)	No	No	53		71
Arlington, VA	226,908 (2014)	Yes, Division of Transportation	Yes	58	71	67
Minneapolis, MN	407,207 (2014)	No	No	58	81	65
Buffalo, NY	258,703 (2014)	No	No	50	54	65

# Trends and Themes

- ① 16 of 30 cities researched have a department of transportation
- ① 25 of 30 cities have a regional structure (more research required here)
- ① Cities have a wide range of organizational structures to manage transportation

Thank you



# Questions and Answers

Your logo here