

Coldspring Avenue Diverter Timeline

February 13, 2003, February 11, 2004, and June 10, 2004: Neighborhood meetings conducted to address the issue of traffic on Jerome Street.

October 11, 2004, the City of Madison and City of Monona jointly decide to install a test of a single traffic diverter at diagonally at Jerome Street. Traffic on Jerome Street would only be able to travel west on Coldspring Avenue and those entering Coldspring Avenue at Monona Drive would only be able to access the Monona Grove High School parking lot.

January 21, 2005: Residents in the Lake Edge Neighborhood expressed unanimous support for the establishment of a permanent traffic splitter.

March 9, 2005: After a City of Monona City Council vote against the traffic diverters, they were removed.

March 29 2005: Legislative File 00830. The City of Madison Common Council approves a resolution to direct the City of Madison Engineering Division to continue to test traffic diverters wholly within the jurisdiction of the City of Madison.

April 2005: Election of current Alder, Larry Palm.

April 2005: Alder receives a survey of the residents of the Lake Edge Neighborhood. The survey states: "It's apparent that the negotiations between the City of Madison and the City Monona concerning the Option 1 diverter (diagonally at Jerome St) are at a stalemate. To resolve this issue as soon as possible, would you be in favor of, if a majority support is shown, suspending negotiations with Monona and proceed with the City of Madison implementing Option 2.

Survey results: 66 in favor, 5 against, 10 undecided

May 12, 2005: Monona Grove School District votes to support the City of Madison proposal if eight additional conditions are met. These agreements are related to:

1. Subdivision of district-owned property in the City of Madison;
2. Approval of plans for renovation of existing school tennis courts;
3. Physical improvements of Coldspring Avenue;
4. Parking permitted on both sides of Coldspring Avenue,
5. Timing of the traffic light at Monona Drive,
6. Traffic control devices would have locks that could be controlled by the School District,
7. Gates would be open in the evenings, weekends and holidays,
8. Gates would allow traffic to flow in both directions

May 16, 2005: The Monona City Council begin a discussion on Resolution 05-05-1197, concerning diverters on Coldspring Avenue. Madison City Engineer Larry Nelson was

present. One person registered against the resolution, three people spoke against the resolution.

May 23, 2005: There was a public neighborhood meeting to discuss the proposed Monona Grove School District conditions on the diverters.

June 6, 2005: Alder Palm wrote a letter highlighting the neighborhood's responses to the Monona Grove School District proposal:

1. Approval of subdivision, as long as properties return to owner-occupancy;
2. Approval of renovation of tennis courts;
3. Approval of physical improvement of Coldspring Avenue;
4. Delay of a decision on parking until the test is completed and feedback is solicited;
5. Residents do not have an opinion of the timing of traffic lights, this should be in conjunction with Traffic Engineering;
6. Residents had concerns about uncontrolled access to the gates. Requested that access only be granted to emergency vehicles;
7. Residents concerns that the gates be open for emergency vehicle access;
8. Again, residents desire only for emergency vehicle traffic through the gate
9. The neighborhood added an additional request that no additional exits from the Monona Grove High School parking lot be created to by-pass the diverters at Coldspring Avenue.

June 6, 2005: The Monona City Council unanimously votes against Resolution 05-05-1197, concerning diverters on Coldspring Avenue. Two individuals spoke in favor of diverters, three people spoke against the diverters.

July 2005: Residents receive a letter informing the of the test of diverters at the end of Jerome Street and the west end of Coldspring Avenue before Lakeview Avenue. In addition, there is an invitation to a public meeting to be held on September 28.

September 2005: Residents receive an additional notice to the previously mentioned public meeting.

September 28, 2005: Public attends a meeting to discuss Coldspring Avenue. This meeting is later rebroadcast on City Channel 12. Written comment cards are received and redistributed to residents prior to vote, as well as available on the District 15 website. In addition, the a Q&A from the meeting is also available on the website.

October 2005: A written vote is taken of residents living on surrounding streets, in accordance to pre-determined Traffic Engineering standards. Each household received one ballot, which must be returned in order to be counted. 71% of all votes are in favor of the City of Madison retaining the current diverters.

December 5, 2005: The City of Monona holds a vote on the Coldspring Avenue diverters. Three people spoke on this resolution, two from Cottage Grove and one from Monona. After a vote to suspend the rules to consider this resolution, it passes.

December 13, 2005: The City of Madison Common Council has a resolution to continue the test implemented on March 29, 2005 and directs the City Engineer to develop a plan to implement a permanent diverter at these locations. An additional vote of the Council will be required to implement such a plan.



Office of the Common Council

City-County Building, Room 417
210 Martin Luther King, Jr. Blvd.
Madison, Wisconsin 53703-3445
Office: 608 266 4071
Fax: 608 267 8669
TTY: 608 267 8670
council@cityofmadison.com

April 25, 2005

Dear Neighbor,

Thank you for signing the recent "survey" concerning additional options for the Coldspring Avenue closure. I appreciate all the comments and information many residents provided with the survey. As your Alderperson, I want to keep you updated and informed of what is happening:

1. Our previous Alderperson, Greg Markle, at the end of his term, authored a City of Madison resolution to say that the city would do its own plans, on City land, if an agreement with the City of Monona or MGHS cannot be reached
2. Just after the election, I attended a Monona Public Works meeting where several Lake Edge residents and Monona residents shared their opinions. There was a feeling that something could be done between the two communities to make this happen
3. I have been appointed to the City of Madison Board of Public Works. This board is important when we consider these options and proceed through the City of Madison's process.
4. I have a meeting scheduled next week with Larry Nelson and City Engineering staff. We will discuss the closure project and the options we have available.

Future Plans:

1. I am setting up a meeting with the City of Monona mayor and city administrator. I hope to determine where we agree and where we do not agree.
2. Please plan to attend the next Lake Edge Neighborhood Meeting. I will be attending this meeting and will bring as much information on this issue as possible.
3. We complete this project with a form of diverter to reduce the traffic from MGHS students through the neighborhood. Success!

If you have any additional concerns, questions or comments please do not hesitate to contact me at district15@cityofmadison.com or call me at my home, 284-1508.

Sincerely,

Larry Palm
Alderson, District 15

cc: Larry Nelson, City Engineer

May 12, 2005

Mayor Robb B. Kahl
City of Monona
5211 Schluter Road
Monona, WI 53716

Dear Mayor Kahl:

This letter is written to inform you of the action that the Monona Grove School District took regarding the Coldspring Avenue issue. At its regular meeting on May 11, 2005, a motion was made and approved on a 6-1 vote to support the proposal from the City of Madison for traffic control devices on Coldspring Avenue providing the following are also approved as part of the intergovernmental agreement:

- The subdivision of the District-owned properties at 4217 and 4221 Jerome Street, and 4316 Monona Drive is approved.
- 2 The District would receive approval to renovate the existing tennis courts located on the north side of Coldspring Avenue in order to change the layout of the tennis courts from an east-west orientation to a north-south orientation and add one additional court.
- 3 Monona and Madison will jointly sponsor the improvement of Coldspring Avenue. Such improvements would occur as soon as practicable.
- 4 Parking would be permitted on the north side of Coldspring Avenue from Monona Drive to Lakeview Avenue
- 5 The timing of the traffic lights would be changed as follows:
 - Left arrow turn signal from Monona Drive onto Coldspring Avenue will be consistent every day, except Sunday, from 6:45 a.m. until 11:00 p.m. with a longer timing from 6:45-8:00 a.m. and 3:30-4:00 p.m. Monday through Friday.
 - Flashing lights on Monona Drive and Coldspring Avenue could be timed daily from 11:00 p.m. until 6:45 a.m.
 - Adjustments in the timing of the traffic signal will be made for special events at the request of the Monona Grove School District

- 6 The traffic control device that would be installed on Coldspring Avenue at Jerome Street would have locks that could be controlled by the Monona Grove School District.
- 7 The traffic control device installed on Coldspring Avenue at Jerome Street would be closed from 6:30 a.m. until 4:30 p.m. Monday through Friday. It will be open from 4:30 p.m. until 6:30 a.m. Monday through Friday, weekends and holidays.
8. The traffic control device installed on Coldspring Avenue at Jerome Street will be designed so that two cars can pass through, when opened, simultaneously going east and west.

Although the District does not believe that any traffic control device on Coldspring Avenue is in the best interest of the School District and its constituents, if the above conditions are approved, it recognizes that this might be a compromise that will resolve this matter.

Please don't hesitate to contact me if you have further questions regarding this matter.

Sincerely,

John Kitslaar
President, Monona Grove School Board

Cc: Monona Grove School Board Members



Office of the Common Council

City-County Building, Room 417
210 Martin Luther King, Jr. Blvd.
Madison, Wisconsin 53703-3445
Office: 608 266 4071
Fax: 608 267 8669
TTY: 608 267 8670
council@cityofmadison.com

May 19, 2005

Dear Residents Along Coldspring Avenue:

RE: No parking anytime on the north side of Coldspring Avenue

At the May 11 Lake Edge Neighborhood Association meeting, members unanimously requested that the City of Madison pursue eliminating parking at any time on the north side of Coldspring Avenue.

As this area is already designated "No Parking on School Days," this request was made to reduce the congestion on Coldspring Avenue during the evening and on weekends. Due to recent concerns about the inability of rescue vehicles to get through when vehicles are parked on both sides of the street, it seems that eliminating parking on the north side would provide a reasonable measure of comfort in the event of an emergency. This request is unconnected with any decision that will be made about the implementation of traffic calming measures on Coldspring Avenue.

I am requesting a 90-day test period. During this time, the street will be posted as "No Parking at Any Time," and the City of Madison will have the right to ticket vehicles that do not comply with this regulation. I know there has been a request for parking by permit only, but implementation of a program such as this for just three blocks is simply too onerous.

Before a test period can be implemented, City of Madison residents who live in houses that have driveway exits onto Coldspring Avenue must give their approval. Therefore, I am sending this letter to you for your input. If you object to this proposal for a 90-day test period, please contact me before Friday, May 27, 2005. If you do not object, you do not need to contact me. Of course, you may always contact me if you have any other concerns or questions. Please remember that this is only a 90-day test. During this time you will have the opportunity to provide feedback to me, the neighborhood and the City of Madison before we make this a permanent action.

Thank you for your attention to this matter. Please contact me at 284-1508 or via e-mail at district15@cityofmadison.com.

Sincerely,

June 9, 2005

Page 2

Larry Palm

Alder, District 15

cc: Cynthia Higgins, Lake Edge Neighborhood Association
Tim Saterfield, Lake Edge Neighborhood Association
Larry Nelson, City Engineer
David Dryer, City Traffic Engineer
Chief Noble Wray, Madison Police Department
Chief Debra Amesqua, Madison Fire Department
Jeanne Hoffman, Assistant to the Mayor
Paul Brost, Principal, Monona Grove High School



Office of the Common Council

City-County Building, Room 417
210 Martin Luther King, Jr. Blvd.
Madison, Wisconsin 53703-3445
Office: 608 266 4071
FAX: 608 267 8669
TTY: 608 267 8670
council@ci.madison.wi.us

June 6, 2005

Mayor Robb B. Kahl
City of Monona
5211 Schluter Road
Monona, WI 53716

Dear Mayor Kahl:

I am writing you about the proposed Monona Grove School District compromise for the diverter on Coldspring Avenue.

On May 23, 2005, Larry Nelson, City of Madison Engineer, David Dryer, City of Madison Traffic Engineer, Dane County Supervisor Andy Olsen and I met with residents of the Lake Edge Neighborhood Association to discuss their concerns surrounding the Monona Grove School District proposal. The following issues were identified:

- 1. Subdivision of District-owned properties at 4217 and 4221 Jerome Street and 4316 Monona Drive is approved.**
The residents presume your desire to subdivide this property is to allow for the expansion of the tennis courts. We are agreeable to this on the condition that the properties are returned to owner-occupied residences in the City of Madison when the project is complete.
- 2. The District would receive approval to renovate the existing tennis courts located on the north side of Coldspring Avenue in order to change the layout of the tennis courts from a north-south orientation and to put in one additional court.**
The residents are generally agreeable to this if the design is substantially similar to the plan submitted previously to the City of Madison.
- 3. Monona and Madison will jointly sponsor the improvement of Coldspring Avenue. Such improvements would occur as soon as practicable.**
Residents are agreeable to this condition as long as curb and gutter is not required on the north side of Coldspring Avenue from Jerome Street to Bainbridge Avenue.
- 4. Parking would be permitted on the north side of Coldspring Avenue from Monona Drive to Lakeview Avenue.**
At a previous meeting of the Neighborhood Association, neighbors agreed to a ninety-day (90) test of "No Parking At Any Time," scheduled to begin shortly. This test is to determine if the elimination of parking on the north side of Coldspring Avenue would improve emergency access to the MGHS playing fields. At the end of the test, the City will

June 6, 2005

Page 2

solicit feedback from residents to determine if there is desire to continue with the no parking program.

5. Timing of traffic lights would be changed.

The City of Madison is agreeable to discussing changes to the timing of traffic lights for school, special events or nighttime traffic. The only limitation to these changes is the traffic volume continuing on Monona Drive; otherwise, I encourage you to directly communicate with the City of Madison Traffic Engineering Department to arrange for these changes.

6. The traffic control device that would be installed on Coldspring Avenue at Jerome Street would have locks that could be controlled by the Monona Grove School District.

The neighborhood has concerns about uncontrolled access at the gate. We require that access to this gate be granted only to emergency vehicles responding to an emergency. Immediately after the emergency response, the gate would be closed to control through traffic.

7. The traffic control device installed on Coldspring Avenue at Jerome Street would be closed from 6:30 a.m. until 4:30 p.m., Monday through Friday. It will be open from 4:30 p.m. until 6:30 a.m., Monday through Friday and on weekends and holidays.

While students and staff from Monona Grove High School constitute a substantial number of the vehicles that travel through the neighborhood, there is also an increasing amount of cut-through and event traffic that continues to use the neighborhood as an alternative to the designated traffic route. Therefore, the residents attending the neighborhood meeting were opposed to the gates being open at any time except as stated in item six; specifically, emergency response vehicles.

8. The traffic control device installed on Coldspring Avenue at Jerome Street will be designed so that, when opened, two cars can pass through, simultaneously going east and west.

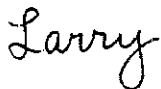
The neighborhood residents at the meeting have expressed a desire to reduce through traffic from Coldspring Avenue and request a gate only as wide as an emergency vehicle.

9. In addition, the neighborhood expressed its desire that no additional exits from Monona Grove High School onto Coldspring Avenue be created that would bypass the diverter at Jerome Street.

I am pleased that we have a meeting scheduled for Monday, June 13, 2005, at 5:30pm. I would very much like to talk to you about these concerns and how Monona and Madison can work together.

If you have any questions, please do not hesitate to contact me at district15@cityofmadison.com or 608.266.4071.

Sincerely,



Larry Palm
Alder, Madison District 15

June 6, 2005

Page 3

cc: Mayor Dave Cieslewicz
Gary Schumacher, Superintendent, Monona Grove School District
John Kitslaar, President, Monona Grove Schools Board of Education
Members of the Monona Grove Schools Board of Education
Paul Brost, Principal, Monona Grove High School
Members of the Monona City Council
Larry Nelson, City of Madison Engineer
David Dryer, City of Madison Traffic Engineer
Chief Debra Amesqua, City of Madison Fire Department
David Berner, Monona City Administrator
Gary Weinert, Director, City of Monona Public Works
Members of the Lake Edge Neighborhood Association Board of Directors
Andy Olsen, Dane County Board of Supervisors



City of Madison

Master

City of Madison
Madison, WI 53703
www.cityofmadison.com

File Number: 00830

| | | |
|---|------------------------------|---|
| File Number: 00830 | File Type: Resolution | Status: Passed |
| Version: 1 | Reference: | Controlling Body: Engineering Division |
| Requester: | Cost: | Introduced: 03/11/2005 |
| File Name: Directing City Staff to Install Traffic Control Devices in Accordance with MGO 3.51(d) in order to Eliminate Commuter Traffic on Local Streets in the Lake Edge Neighborhood. | | Final Action: 03/29/2005 |

Title: Directing City Staff to Install Traffic Control Devices in Accordance with MGO 3.51(d) in order to Eliminate Commuter Traffic on Local Streets in the Lake Edge Neighborhood

Notes:

| | |
|--|---------------------------------------|
| Code Sections: | Agenda Date: 03/29/2005 |
| Indexes: | Agenda Number: |
| Sponsors: Gregory Markle and Judy Compton | Enactment Date: 04/01/2005 |
| Attachments: | Enactment Number: RES-05-00335 |

History of Legislative File

| Ver- sion: | Acting Body: | Date: | Action: | Sent To: | Due Date: | Return Date: | Result: |
|------------|---|------------|---|---|------------|--------------|---------|
| 1 | Engineering Division | 03/11/2005 | Fiscal Note Required / Approval | Comptroller's Office/Approval Group | 03/11/2005 | | |
| 1 | Comptroller's Office/Approval Group | 03/11/2005 | Approved Fiscal Note By The Comptroller's Office | Engineering Division | | | |
| 1 | Engineering Division | 03/11/2005 | Refer for Introduction | COMMON COUNCIL | | 03/29/2005 | |
| 1 | COMMON COUNCIL | 03/15/2005 | Refer | PEDESTRIAN/BICYCLE/MOTOR VEHICLE COMMISSION | 03/29/2005 | 03/22/2005 | |
| 1 | PEDESTRIAN/BICYCLE/MOTOR VEHICLE COMMISSION | 03/22/2005 | RECOMMEND TO COUNCIL TO ADOPT - REPORT OF OFFICER | | | | Pass |
| 1 | COMMON COUNCIL | 03/29/2005 | Adopt | | | | Pass |

Text of Legislative File 00830

..Fiscal Note
Funds are available in Acct No. CS53-58250-810354.

..Title

Directing City Staff to Install Traffic Control Devices in Accordance with MGO 3.51(d) in order to Eliminate Commuter Traffic on Local Streets in the Lake Edge Neighborhood

...Body

Preamble

That portion of the Lake Edge Neighborhood, north and east of Coldspring Avenue is the recipient of commuter traffic generated by the Monona Grove High School, 4400 Monona Drive. Preferred arterial routes are readily available through the use of CTH BB (Monona Drive and Cottage Grove Road) and CTH AB (Buckeye Road.)

Neighborhood meetings to address the issue were conducted on February 13, 2003, February 11, 2004, June 10, 2004, and January 21, 2005.

A traffic splitter was installed on October 11, 2004 at the intersection of Coldspring Avenue and Jerome Street. The traffic splitter was located in both the City of Madison and the City of Monona as the municipal boundary is on the centerline of Coldspring Avenue between Monona Drive and Bainbridge Street.

The neighborhood meeting of January 21, 2005 held at Pinney Library resulted in unanimous support (one abstention) for the establishment of a permanent traffic splitter at the site during the summer of 2005 in conjunction with the proposed improvement of Coldspring Avenue.

However, the Monona Grove School District and the City of Monona determined that the test was not satisfactory to their needs. The City of Monona unilaterally removed the traffic splitter on March 9, 2005.

Now Therefore Be It Resolved, that city staff are hereby authorized and directed to extend the traffic test within the Lake Edge Neighborhood through the installation of one or more traffic control devices in order to interdict commuter traffic on local streets that more properly should be traveling on available and convenient arterial streets and county trunk highway, in accordance with Section 3.51(3)(d), Madison General Ordinances and this resolution; and,

Be It Further Resolved, that the affected residents, the Monona Grove School District, and the City of Monona shall be informed of the progress, timetable and results of the test and of which option is chosen for diverting commuter traffic from this neighborhood.

Joint Press Release

City of Monona & Monona Grove School District

Monona Grove High School serves approximately one thousand students. It is located on Monona Drive adjacent to the city of Madison's Lake Edge neighborhood. There is only one access to the high school. That access is Coldspring Avenue. The cities of Madison and Monona jointly share ownership of this street. Some residents in the Lake Edge neighborhood have complained of traffic volume and excessive speeding by students. To seek to minimize this, a temporary traffic diverter was installed on Coldspring Avenue in January 2005 and a traffic study was conducted.

At the conclusion of this ninety-day study period, the Lake Edge Neighborhood Association met and concluded that the diverter addressed their complaints and requested that this device be installed permanently on Coldspring Avenue.

The City of Monona and the Monona Grove School District, however, raised serious concerns with safety issues related to installing a permanent diverter on the only access street to the high school. Both the Monona Police and Fire Departments raised concerns with emergency access if this mechanism was installed permanently. A compromise solution was presented with the request that the governmental entities continue discussions on this matter until a solution was reached that could satisfy the concerns of all parties.

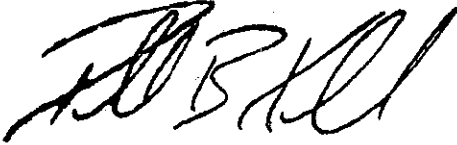
The City of Madison, however, has continued to move toward implementing unilateral mechanisms to address this issue, responding to the concerns of the Lake Edge residents while ignoring the concerns of the City of Monona and the Monona Grove School District.

During the afternoon of June 8, the City of Madison's traffic engineering department placed "no parking" signs on the north side of Coldspring Avenue. There has been parking allowed at that location, only after school hours, for many years. This action was not communicated to the Monona Grove School District even though its high school is located on Coldspring Avenue, making it a "property owner" on this street. Furthermore, again without any notification that this long standing parking regulation was being changed, the Madison Police Department issued citations to cars parked on the north side of the street that very evening. Those issued tickets were attending the 8th grade recognition ceremony for their children.

Additionally, the City of Madison has adopted a resolution that would allow their engineering department to place barricades on streets in the Lake Edge neighborhood that feed into Coldspring Avenue, thereby creating a cul-de-sac, dead-end on the only access street to Monona Grove High School. If implemented, the same safety concerns for emergency vehicle access would be the result. The City of Monona and the Monona Grove School District have been informed that this action is likely to be implemented during the summer.

It is imperative that the City of Madison ceases taking unilateral action that would jeopardize the safety of the students and visitors to Monona Grove High School. The City of Monona and Monona Grove School District urge the City of Madison to rescind its action and again allow parking on the north side of Coldspring Avenue after the school day has ended and continue to engage in discussions that will lead to a mutual resolution to this issue.

Robb B. Kahl
Mayor, City of Monona

A handwritten signature in black ink, appearing to read 'R. B. Kahl', written in a cursive style.

John L. Kitslaar, III
President, Monona Grove School District



Office of the Common Council

City-County Building, Room 417
210 Martin Luther King, Jr. Blvd.
Madison, Wisconsin 53703-3445
Office: 608 266 4071
FAX: 608 267 8669
TTY: 608 267 8670
council@ci.madison.wi.us

June 14, 2005

Dear Lake Edge Neighborhood Residents:

Following a "no" vote by the Monona City Council on placing a diverter across the intersection of Jerome Street, I met with the mayor of Monona on Monday, June 13. We discussed the base issues surrounding Coldspring Avenue and agreed that, while there are areas that the cities of Madison and Monona can work on cooperatively, the dividers are not an area on which we will be able to come to a consensus.

Following the meeting, I requested the City of Madison's Engineer to begin a process leading to a short-term test of two diverters on Coldspring Avenue near the Monona Grove High School.

Details about the Diverters

We will install temporary concrete barriers similar to the type used in the first temporary barrier last January. If neighborhood approval is granted, the final product will be designed with decorative elements and potentially some landscaping.

One diverter will be placed at the south end of Jerome Street, in essence creating a dead-end on Jerome. The other diverter will be placed on Coldspring Avenue, just before Bainbridge Street. This, too, will be a dead end, with only Coldspring Avenue serving the three driveways on Coldspring Avenue and the Monona Grove High School.

Details about the Process

These diverters will be temporary. We expect the test to begin sometime in later summer to judge the impact on the neighborhood without through school traffic. Also, this will allow students using the high school for athletic practices, etc., to get used to the new driving habits.

The test will continue through the first month of the Monona Grove school year. Around this time, I will host a community-wide meeting to discuss the impact of the diverters and to allow community members to discuss their feelings.

Then, resident-households will receive a ballot to indicate their preference. This will be one ballot per household, and the vote will be tabulated by the City of Madison. Based on the outcome, the dividers will either become permanent or a "cooling-off" period will be implemented and this issue will remain essentially unresolved.

June 14, 2005

Page 2

Other Issues

"No Parking At Any Time Monday Through Friday" signs will remain as defined in our current 90-day test. People who parked illegally during the first day of the change will have their tickets reduced to warnings. At this point, however, the expectation is that people are aware of the change and future violations will be ticketed. Neighbors living on Coldspring Avenue will have the opportunity separately to express their opinions of this test and, depending upon their responses, the parking prohibition will either become permanent or it will be removed.

We will continue discussions with the City of Monona about the project and the potential concerns from Monona Grove High School; they remain important partners in this process. At this point, it would be too early to speculate on future activity.

At a planned meeting a few weeks from now with the East District Police Captain, I will request more police presence and increased awareness of the issue of people driving fast through our neighborhood. While I believe there is an opportunity here, the reality is that Madison has very limited patrol in this area and, while we can work to increase enforcement activity, there is no guarantee that at any given time (say from 7:30 a.m. – 8:30 a.m.) this will be a priority for the police.

You can stay up-to-date on the discussion about Coldspring Avenue by visiting my City of Madison Website at: <http://www.cityofmadison.com/council/District15/index.html>. I will post copies of all documents that I send or receive.

Focus on the Future

The Lake Edge Neighborhood has a lot of opportunity to improve our community. Planning for the Picnic is an important indicator of what we can do if we work together. Hopefully, either way, we are on a path to resolving this issue and will be able to put it behind us.

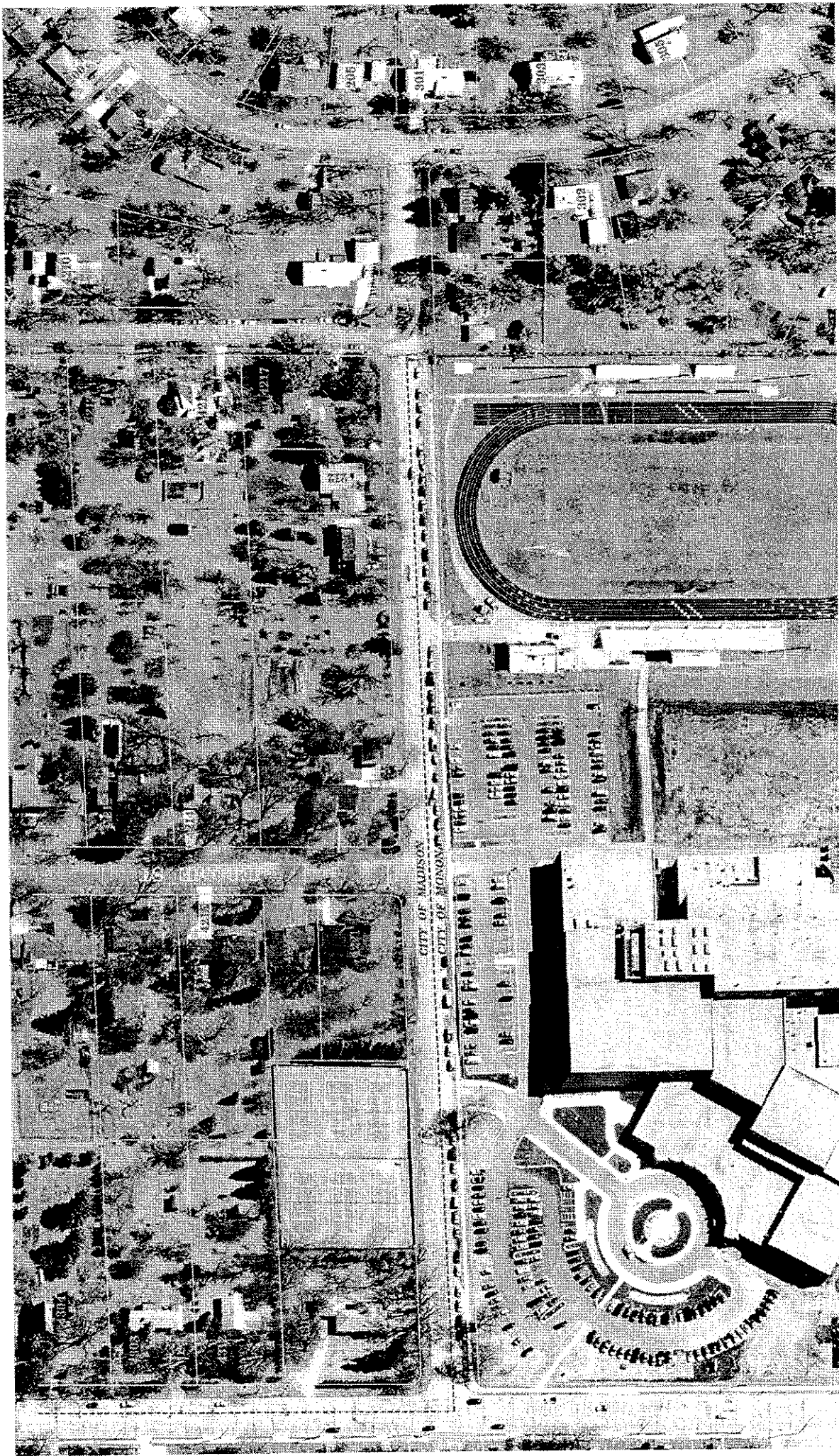
If you have any questions, I encourage you to contact me at district15@cityofmadison.com.

Thank you,



Larry Palm
Alder, District 15

enc: Aerial view of Coldspring Avenue area





Office of the Common Council

City-County Building, Room 417
210 Martin Luther King, Jr. Blvd.
Madison, Wisconsin 53703-3445
Office: 608 266 4071
FAX: 608 267 8669
TTY: 608 267 8670
council@ci.madison.wi.us

July 25, 2005

Dear Lake Edge Neighborhood Residents:

During the week of July 25, the City of Madison will begin to install diverters at the south end of Jerome Street just north of Coldspring Avenue and at the west end of Coldspring Avenue immediately west of Bainbridge Street. This will be a test. As a resident, your household will get to vote on whether to place permanent barriers or to maintain the current open boundary.

There will be a public meeting to discuss these issues on September 28 at 7:00 p.m. at Lake Edge Lutheran Church, located at 4032 Monona Drive. While all members of the community are invited to participate, only those resident households near the diverters will receive ballots.

Frequently Asked Questions

Who will get a ballot?

- Residents on Coldspring Avenue, Bainbridge Street, Jerome Street, Winnequah Road and W Lakeview Avenue. You will receive these ballots directly from City Engineering. Each household will get one ballot and one vote.

The barriers are unattractive, and intended for highways, not neighborhoods. Can we install something nicer?

- These will be temporary barriers. If residents vote for permanent barriers, structures with decorative details and landscaping will be built. We will "blend" them as best as possible.

Why can't we implement other safety measures, like stop signs and speed humps?

- First, the streets in this area are without curb and gutter. It is City of Madison policy not to place speed humps and other traffic calming/pedestrian safety devices without curb and gutter.
- Second, changes to stop signs, adding additional speed signs and decreasing the speed will not create a substantial enough change in behavior on our neighborhood streets.
- Third, increasing the police presence is not economically feasible. The East Police District, in which the Lake Edge Neighborhood Association lies, cannot spare additional resources at peak rush hour times. The police have allocated their resources to major arterial corridors where a higher percentage of accidents occur. In addition, the East Police District is a substantial piece of our city, covering Monona Drive to E. Washington Avenue and past I90/94. We do not have this capacity.

What about support from the City of Monona, Cottage Grove or the Monona Grove High School?

- Since the initial concept of a diverter on Coldspring Avenue emerged, the City of Madison has worked with the City of Monona and the Monona Grove School District to implement a plan that would improve conditions in our neighborhood while maintaining our individual communities' priorities. While some good suggestions have been made, such as using the high school's

July 25, 2005

Page 2

Educational Resource Officer (ERO) or a parent patrol, there were no long-term solutions that could be guaranteed to the Lake Edge residents.

What about safety concerns, such as EMS and fire service to Monona Grove High School and the neighborhood?

- The City of Madison has full-time EMS and fire services from multiple locations for this area and primarily uses major streets, such as Buckeye Road and Monona Drive. The City of Madison Fire Department has determined that the closure on Coldspring Avenue will not impact EMS and fire service to the neighborhood. All buildings will continue to be serviced.
- The City of Monona EMS service has not responded to an emergency call in the neighborhood in the last 24 months. Therefore, the diverter will not negatively impact EMS and fire service to the neighborhood from the City of Monona.
- The City of Madison has responded to 74 calls in the City of Monona in the last 17 months. In addition, the City of Madison responded to Monona Grove High School eight times since January 2000 and, on two occasions, responded to the scene before City of Monona units. The City of Madison will continue to use the major roads and City of Monona units can use the full length of Coldspring Avenue to access the high school and the playing fields.
- There are also strong resident concerns about cars parked on Coldspring Avenue blocking driveways, fire hydrants and near intersections. In addition, at peak times, cars can substantially block emergency vehicle access if cars are parked on both sides of the street. Residents along Coldspring Avenue will receive a second ballot to determine if they wish to keep the "No Parking" signage on the Madison side of Coldspring Avenue.

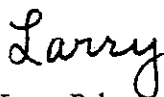
What about issues related to the high school tennis courts, resurfacing Coldspring Avenue, turn lanes from Monona Drive and Coldspring Avenue and changes to parking on Coldspring Avenue?

- Several items were included in the original proposal for the diverter. Many were conditional, dependent on an agreement between the City of Monona and Madison that unfortunately, as you know, was not reached. Therefore, these items will be the topic of future discussions, one at a time, with specific input from the neighborhood. City of Madison staff will continue to communicate with the City of Monona as these concerns are raised.

I appreciate your involvement in this process, and I understand that a letter cannot fully explain the situation. I invite you to contact me at district15@cityofmadison.com or 284.1508. You may also check my Web page at <http://www.cityofmadison.com/council/District15/index.html> for updated information and previous correspondence.

Please note the September 28 meeting on your calendar and be sure to invite anyone concerned with this project. I look forward to seeing you there.

Sincerely,



Larry Palm
Alder, District 15

July 25, 2005

Page 3

cc: Mayor Dave Cieslewicz, City of Madison
Ald. Judy Compton, District 16
Larry Nelson, City Engineer
David Dryer, City Traffic Engineer
Chief Debra Amesqua, Madison Fire Department
Ed Ruckriegel, Fire Marshal, Madison Fire Department
Captain Jilene Klubertanz, Madison East District Police
Jeanne Hoffman, Assistant to Mayor Cieslewicz
Mayor Robb B Kahl, City of Monona
Members of the Monona City Council
David Berner, City Administrator, City of Monona
Chief Robert Van Etten, Jr., Monona Fire Department
Chief Walter Ostrenga, Monona Police Department
Richard Schmale, City Engineer, City of Monona
Gary Schumacher, Superintendent, Monona Grove School District
Paul Brost, Principal, Monona Grove High School
John Kitslaar, President, Monona Grove Schools Board of Education
Members of the Monona Grove Schools Board of Education

September 20, 2005

Dear Neighbors:

You are invited to a public forum about the diverters at the south end of Jerome Street and the west end of Coldspring Avenue. **The meeting will be on Wednesday, September 28, at 7:00 p.m. at Lake Edge Lutheran Church, 4032 Monona Drive.**

This is an opportunity for you to voice your concerns to your neighbors before a vote is taken to decide if the diverters become permanent. Because this is a critical issue to many different communities, there will be some ground rules to help the forum run smoothly:

1. All attendees must sign in at the door. You may not bring signs, placards or other items into the meeting room.
2. Anyone wishing to speak must register at the start of the meeting and must provide his/her name, address, and whether he/she is in favor, not in favor, or unsure about the project.
3. Each speaker will have a three (3) minute time limit.
4. I will call speakers, rotating between "pro" and "con." I will announce the speaker, the person next in line to speak, and then start the timer.
5. Speakers may not address specific members of the audience or solicit responses or discussion. You may speak only when it your turn. Staff from the City of Madison Traffic Engineering Division, Police Department and Fire Department will be on hand to answer questions.

Please remember that only those households along Coldspring Avenue, Bainbridge Street, Jerome Street, Winnequah Road and W. Lakeview Avenue will receive a ballot. A majority "yes" vote by these households will advance this issue to the Madison Common Council for a vote. **Therefore, I request that all speakers focus on the purpose of this meeting: to help these residents make an informed decision.**

Meeting attendees who wish to offer additional comments, concerns or issues will be able to do so on the registration cards. These comments will be made available on my district Web page for the voting households to decide about the diverters. If your household is one of those eligible to vote on this matter (see paragraph above), you will find a postcard enclosed with this letter. If you would like a hard copy of the comments from the registration cards mailed to your home, please return the postcard to the Common Council office by September 23. In addition, Madison

September 20, 2005

Page 2

City Channel 12 will be taping this meeting for future broadcast. All those who speak will be recorded so the general community will be able to hear their statements.

More information, as well as previous letters and correspondence, can be found on my district website at: <http://www.cityofmadison.com/council/District15/index.html>. I appreciate the time and energy all members of our community have put into this project. I ask you to remember to keep this meeting positive and informative.

If you have any questions about the specifics of this meeting, please do not hesitate to contact me at district15@cityofmadison.com or 284-1508.

Sincerely,

Larry Palm
Alder, District 15

enc (voting households only):

Postcard to request comments from meeting

cc (without enclosure):

Mayor Dave Cieslewicz, City of Madison
Ald. Judy Compton, District 16
Larry Nelson, City Engineer
David Dryer, City Traffic Engineer
Chief Debra Amesqua, Madison Fire Department
Ed Ruckriegel, Fire Marshal, Madison Fire Department
Captain Jilene Klubertanz, Madison East District Police
Jeanne Hoffman, Assistant to Mayor Cieslewicz
Mayor Robb B. Kahl, City of Monona
Members of the Monona City Council
David Berner, City Administrator, City of Monona
Chief Robert Van Etten, Jr., Monona Fire Department
Chief Walter Ostrenga, Monona Police Department
Richard Schmale, City Engineer, City of Monona
Gary Schumacher, Superintendent, Monona Grove School District
Paul Brost, Principal, Monona Grove High School
John Kitslaar, President, Monona Grove Schools Board of Education
Members of the Monona Grove Schools Board of Education

Q: Monona Drive has become too busy for safety. Would barricades be considered on the Madison side of Monona Drive, blocking off Lakeview Drive, Winnequah Road, Dean Avenue and Pflaum Road, thus diverting Madison traffic to Stoughton Road?

A: The City of Madison would not consider this proposal. Monona Drive is designed to accommodate increased traffic and has been designated a Dane County Highway as a result of this capacity.

Q: The data on "before" speeding was 29 - 32 mph. Is that considered dramatic speeding - 85% of drivers going 30 mph before and 28 mph after? What's up with your data?

A: According to current City of Madison standards, this data is not considered horrific. The diverters were designed to place traffic on major streets, such as Monona Drive, instead of on neighborhood streets. Data from these tests have indicated a reduction in traffic volume.

Q: Is there data to support the statement of speeding without the barricades?

A: We have "before" data: the 85th percentile speeds ranged from 29 - 32 mph. As noted at the meeting, the data does not show that there is a severe speeding problem. Generally, we see more severe problems in the 35 - 39 mph range.

Q: How will people have access to Coldspring Avenue during the (re)construction of Monona Drive? Even if an attempt is made to keep the intersection open while concrete/tar is poured, one can't drive over the eastern lanes.

A: The reconstruction of Monona Drive will be a joint project between the Cities of Madison and Monona. At the time of construction, every effort will be made to provide access to residents on Coldspring Avenue and users of Monona Grove High School. Alternate solutions may be available but, not knowing the schedule and scope of construction, it would not be appropriate to comment at this time.

Q: Why did you count only one day's worth of traffic versus a week's time?

A: It is standard City of Madison procedure to count traffic for one day only. Using a consistent measure allows Traffic Engineering to compare streets throughout the city.

Q: Was all data collected when school was in session.

A: The data was collected when school was in session.

Q: Do any of your children or did any of your children go to La Follette High School? If so, did they drive through the neighborhood and down the residential streets to get to their high school? Will you put up barriers on Turner Avenue and Spaanem Avenue?

A: We presume this question was for the speakers, therefore they were asked to share this information when they testified.

Q: If the barriers become permanent, do you support Monona Grove School District in moving their properties on Jerome Street and Monona Drive to accommodate more parking and making a change in the tennis courts (win/win for all involved)?

A: The City of Madison has established a policy that Coldspring Avenue will remain the northern boundary of Monona Grove High School. Therefore, a change of use for the houses, such as a parking lot, is not permitted. We will continue to discuss improving the tennis facility at this location with Monona Grove High School.

Q: If a permanent structure is put in place, will it be something that cannot be driven over or around? The temporary diverter has cars going over the lawns and bushes.

A: If the Madison Common Council approves permanent diverters, efforts would be made to ensure that vehicles are not able to drive around them. This would include the installation of curb and gutter in areas immediately adjacent to the diverters.

Q: Why wasn't traffic counted on Monona Drive, where the traffic was diverted?

A: Traffic wasn't counted on Monona Drive because there are many additional factors and variables on this street that aren't present on the streets within the neighborhood.

Q: What exactly occurred last Thursday night with the emergency vehicles?

A: Emergency medical crews were called to Bainbridge Avenue to assist with an elderly person who fell in the street.

Q: All the concerns stated at the public hearing are about speeding. Why not look for solutions to speeding? Barricades are diverters, not speed abatement devices.

A: Traffic Engineering has focused on diverters as a method to direct traffic to streets designed to handle larger vehicle volumes. The City of Madison made no assumptions about the potential change in the speed of traffic.

Q: Can any Madison neighborhood request barricades to be placed in their neighborhood to divert traffic? If not, why are barricades an acceptable solution for this neighborhood?

A: Solutions to traffic issues are determined on a case-by-case basis. Each situation is unique and, therefore, solutions for other Madison neighborhoods would be different. We do know that a number of years ago, the neighborhood around Edgewood High School was able to change the driveway to the campus and block off the entrance to one of the neighborhood streets from Monroe Street.

Q: Why is it that only the people on four streets get to vote? What about the other residents of District 15 who live on the "La Follette Freeway" (Turner Avenue)?

A: The City of Madison Traffic Engineering Division has determined that residents closest to the diverters will be able to vote. The selection of streets was made public in July 2005.

November 4, 2005

Dear Residents Near Coldspring Avenue:

For the past several years, residents in your area have been working to resolve a critical neighborhood safety issue related to traffic traveling through neighborhood streets instead of designated collector roads. Over the years these concerns have steadily grown, while potential solutions have been whittled away. Most recently, two attempts were made to reduce the volume of traffic on Jerome Street, Bainbridge Street and Lakeview Avenue by strategically placing diverters on Coldspring Avenue.

Since July, we have been testing a diverter at the south end of Jerome Street and another at the east end of Coldspring Avenue. This has effectively made Coldspring Avenue a dead end street serving as an entrance to the student parking lot of Monona Grove High School, their playing fields, and to the three houses located on Coldspring Avenue.

After the diverters were installed and the students returned to school, residents along Coldspring Avenue, Jerome Street, Bainbridge Street, E. Winnequah Avenue, and W. Lakeview Avenue received a ballot to determine if there was neighborhood interest to continue the diverters and make them permanent. After a review of the vote, the residents who responded to this survey have chosen to advance the current diverter program to the Madison Common Council. The temporary diverters will remain until such time as permanent diverters are installed.

Over the next few weeks, City Engineering will draft a resolution to keep the current concrete diverters in place until permanent diverters can be installed and to authorize the City to plan, design, build and implement a permanent diverter system. After approval by the Madison Common Council, Engineering will begin the process, which will include additional public meetings to make comments about the specifics of the intended diverters. You will be invited to attend the Common Council meeting when this resolution will be discussed and voted upon.

At this point, if you are interested about the progress of the plan and would like to continue to receive information, please contact the Council Office at 266.4071 to be placed on a mailing list about the design and planning process. If you have any other questions, please give me a call at 284.1508 (home), 266.4071 (Council office) or district15@cityofmadison.com.

Thank you for all the efforts you and your neighbors have made to strengthen your community. I look forward to working with you in the future as we move forward

Sincerely,

Larry Palm
Alder, District 15

November 4, 2005

Page 2

cc: Mayor Dave Cieslewicz, City of Madison
Ald. Judy Compton, District 16
Larry Nelson, City Engineer
David Dryer, City Traffic Engineer
Chief Debra Amesqua, Madison Fire Department
Ed Ruckriegel, Fire Marshal, Madison Fire Department
Captain Jilene Klubertanz, Madison East District Police
Jeanne Hoffman, Assistant to Mayor Cieslewicz
Mayor Robb B Kahl, City of Monona
Members of the Monona City Council
David Berner, City Administrator, City of Monona
Chief Robert Van Etten, Jr., Monona Fire Department
Chief Walter Ostrenga, Monona Police Department
Richard Schmale, City Engineer, City of Monona
Gary Schumacher, Superintendent, Monona Grove School District
Paul Brost, Principal, Monona Grove High School
John Kitslaar, President, Monona Grove Schools Board of Education
Members of the Monona Grove Schools Board of Education



Office of the Common Council

City-County Building, Room 417
210 Martin Luther King, Jr. Boulevard
Madison, Wisconsin 53703
(Phone) 608 2664071
(FAX) 608 267 8669
(TTY) 608 267 8670

NEWS RELEASE

FOR IMMEDIATE RELEASE

Date: November 4, 2005

CONTACT: Ald. Larry Palm, District 15
(608) 266-4071

COLDSRING AVENUE DIVERTERS TO REMAIN

A majority of neighborhood residents have voted to retain the current temporary diverters and to request the Madison Common Council to authorize construction of permanent diverters at two intersections on Coldspring Avenue. Of the 76 confirmed responses, 54 voted in favor, or 71.1%. Passage of this resolution will end the longstanding concern of residents who live on adjacent streets about the increasing number of drivers who view local neighborhood streets as viable alternatives to major arterial streets, such as Monona Drive.

One resident responded, "Please keep the diverters in place; this is not an attempt to separate Madison and Monona, but rather to detour the traffic which, historically, has been unsafe to the surrounding neighborhood and the children of Frank Allis Elementary."

Since July, the City of Madison has been testing two diverters, one at the south end of Jerome Street and the other at the east end of Coldspring Avenue. This has effectively made Coldspring Avenue a dead end street serving as an entrance to the student parking lot and playing field of Monona Grove High School and to the three houses located on Coldspring Avenue. During the tests, the closure reduced average weekday traffic volume on Jerome Street from 760 vehicles to 160 and on Coldspring Avenue from 850 to 310. This is a reduction in traffic volume on these streets of 80% and 64%, respectively.

Madison Alder Larry Palm, who represents the district, said, "City of Madison Police, Fire and EMS will continue to respond to calls from Monona Grove High School and residents of the neighborhood as first responders. Our test shows there is little evidence to suggest that this closure has a negative effect on safety at Monona Grove High School."

The Madison Common Council will vote on this issue in the next few weeks.

Background Information may be found at:
<http://www.cityofmadison.com/council/District15/index.html>
<http://www.cityofmadison.com/transp/coldspring.htm>