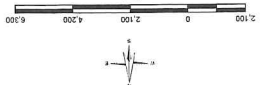
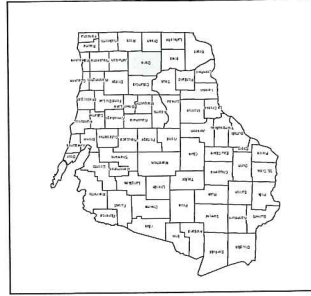


Zero Car Households

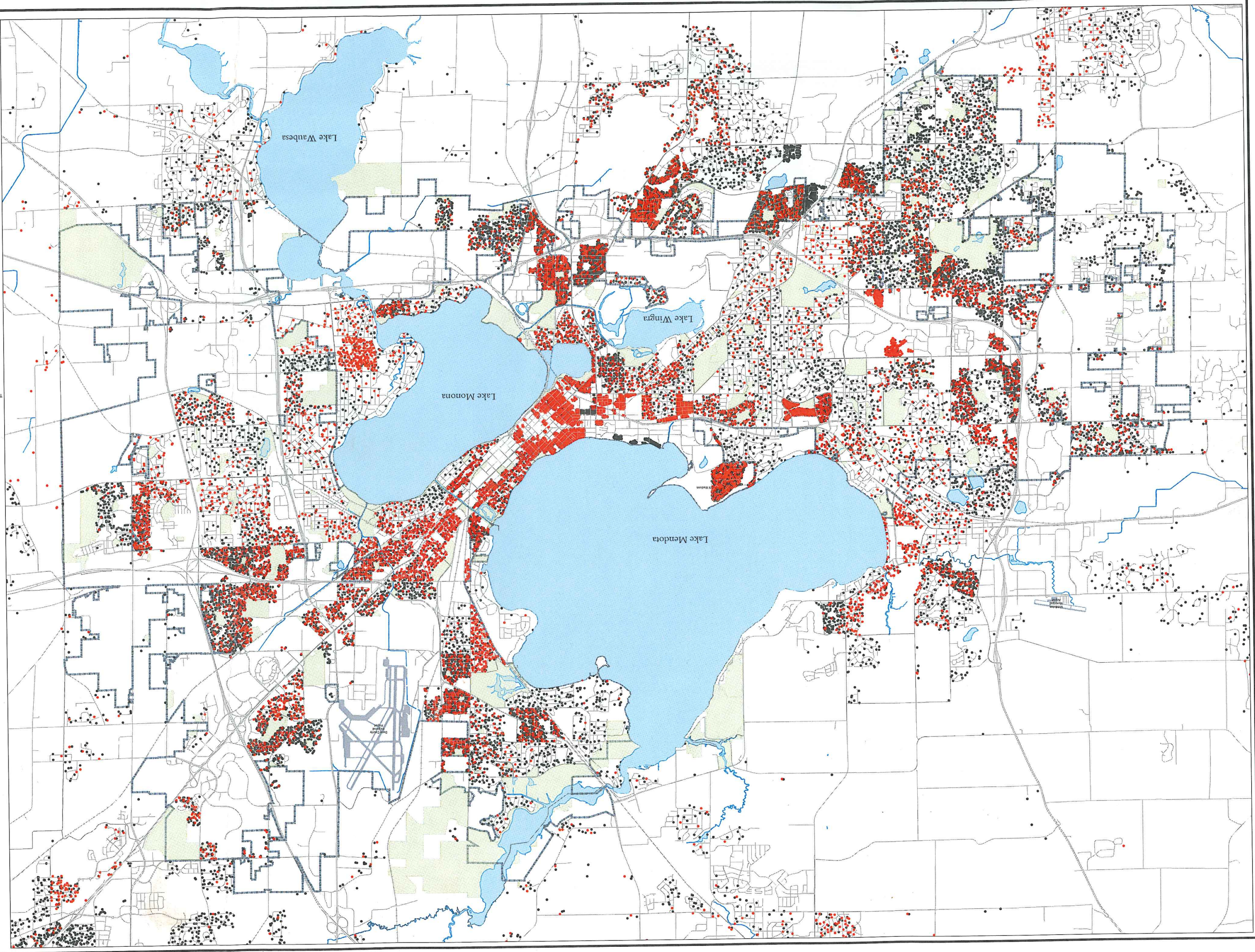
City of Madison Area
Dane County, Wisconsin

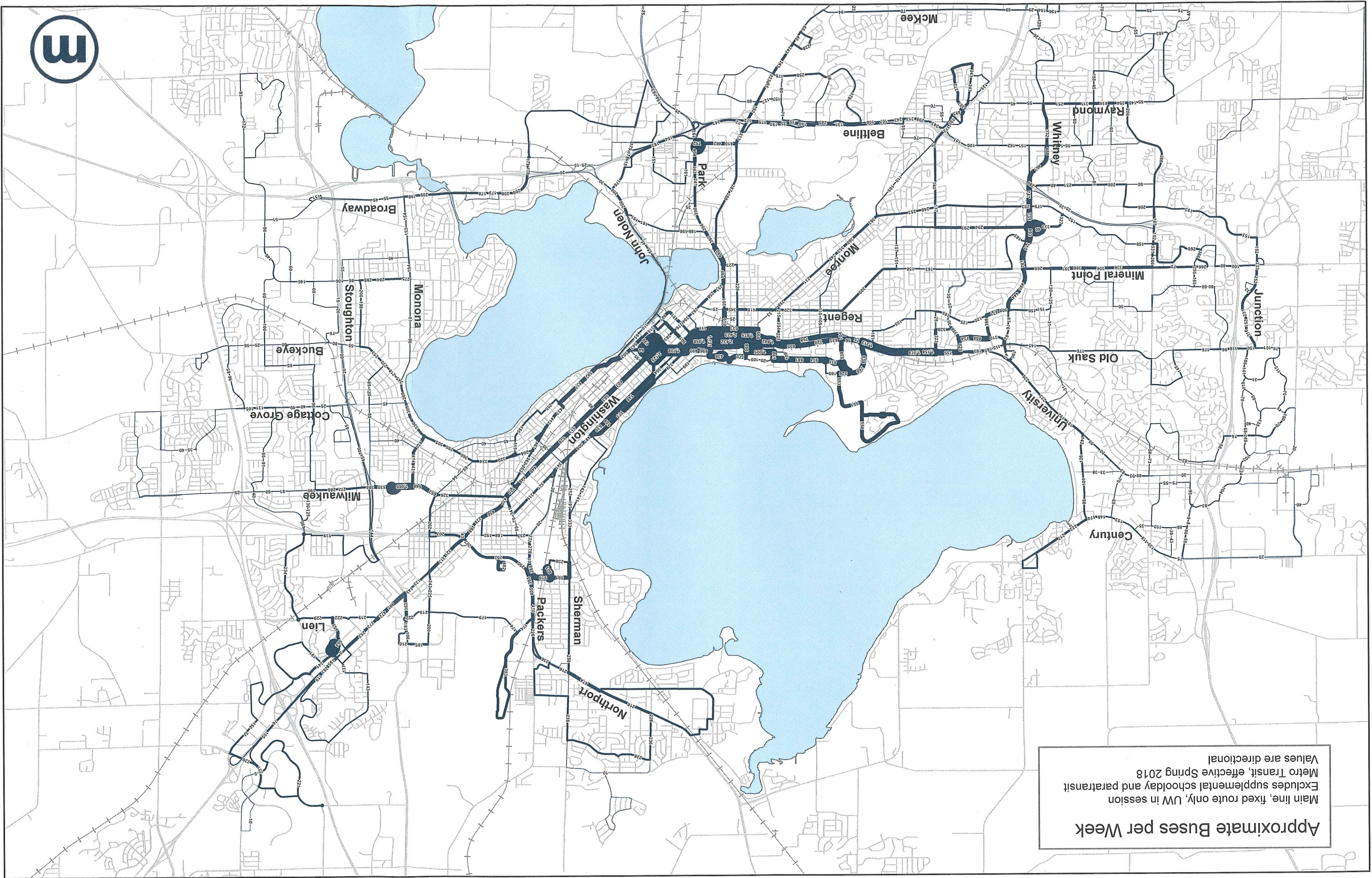
- All Minority Populations
- 1 Dot = 3 People
- Households with No Vehicles Available
- 1 Dot = 1 Households

A multivariate mapping technique using dot density mapping is used to show both population density and minority concentrations. One dot equals one household with no vehicle access. One dot equals three households with income below the poverty line. One dot equals three people. 2015 American Community Survey 1-Year Estimates. The dots are placed randomly within census block and are restricted to areas of residential land use. This restriction results in a map that gives a more accurate portrayal of where population exists on the ground versus the traditional choropleth map.



Source: Esri
Demographic 2010, 1:500,000
Population and Race: 2010 Census (U.S. Bureau of the Census)
Date: 7/19/2018
1:24,845
1 inch = 2,070 feet





Approximate Buses per Week

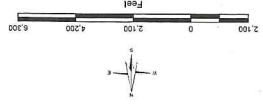
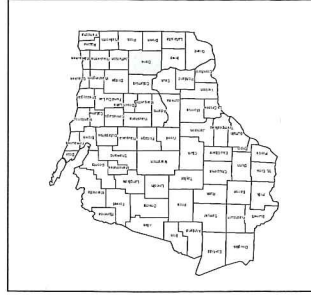
Main line, fixed route only, UW in session
Excludes supplemental schoolday and paratransit
Metro Transit, effective Spring 2018
Values are directional

Zero Car Households

City of Madison Area
Dane County, Wisconsin

- 1 Dot = 1 Households
- Households with No Vehicles Available
- 1 Dot = 3 People
- Households with Income Below the Poverty Line

A multivariate mapping technique using dot density mapping is used to show both population density and minority concentrations. One dot equals three households with no vehicle access. One dot equals three households with income below the poverty line. 2016 American Community Survey 1-Year Estimates. These data are placed randomly within census block but are restricted to areas of residential land use. This restriction results in a map that gives a more accurate portrayal of where population exists on the ground versus the traditional choropleth map.



Source: Esri
Aerial Imagery: 2012 (CNTR)
Populations and Area: 2010 Census (U.S. Bureau of the Census)
Date: 7/19/2018
1:24,845
1 inch = 2,070 feet

