



Design prepared for:  
**Engineering Division**

**Engineering Operations  
Building Addition**

Location:  
1600 Emil St  
Madison, WI 53713

Contract: TBD  
Project: 10349  
Common Council Approval:

Lighting Design:  
Kay Schindel, P.E., City of  
Madison; 608-266-4668;  
kschindel@cityofmadison.com

Civil Design:  
Eric Dundee, P.E., City of  
Madison

Landscaping Design:  
Sarah Lerner, L.P.A., City of  
Madison; 608-261-4281;  
slerner@cityofmadison.com

Electrical Design:  
Dave Hanson, P.E., Kueny  
Architects

Plumbing Design:  
Kay Schindel, P.E., City of  
Madison; 608-266-4668;  
kschindel@cityofmadison.com

HVAC Design:  
Kay Schindel, P.E., City of  
Madison; 608-266-4668;  
kschindel@cityofmadison.com

Structural Design:  
John Schmidbauer, P.E.,  
Kueny Architects

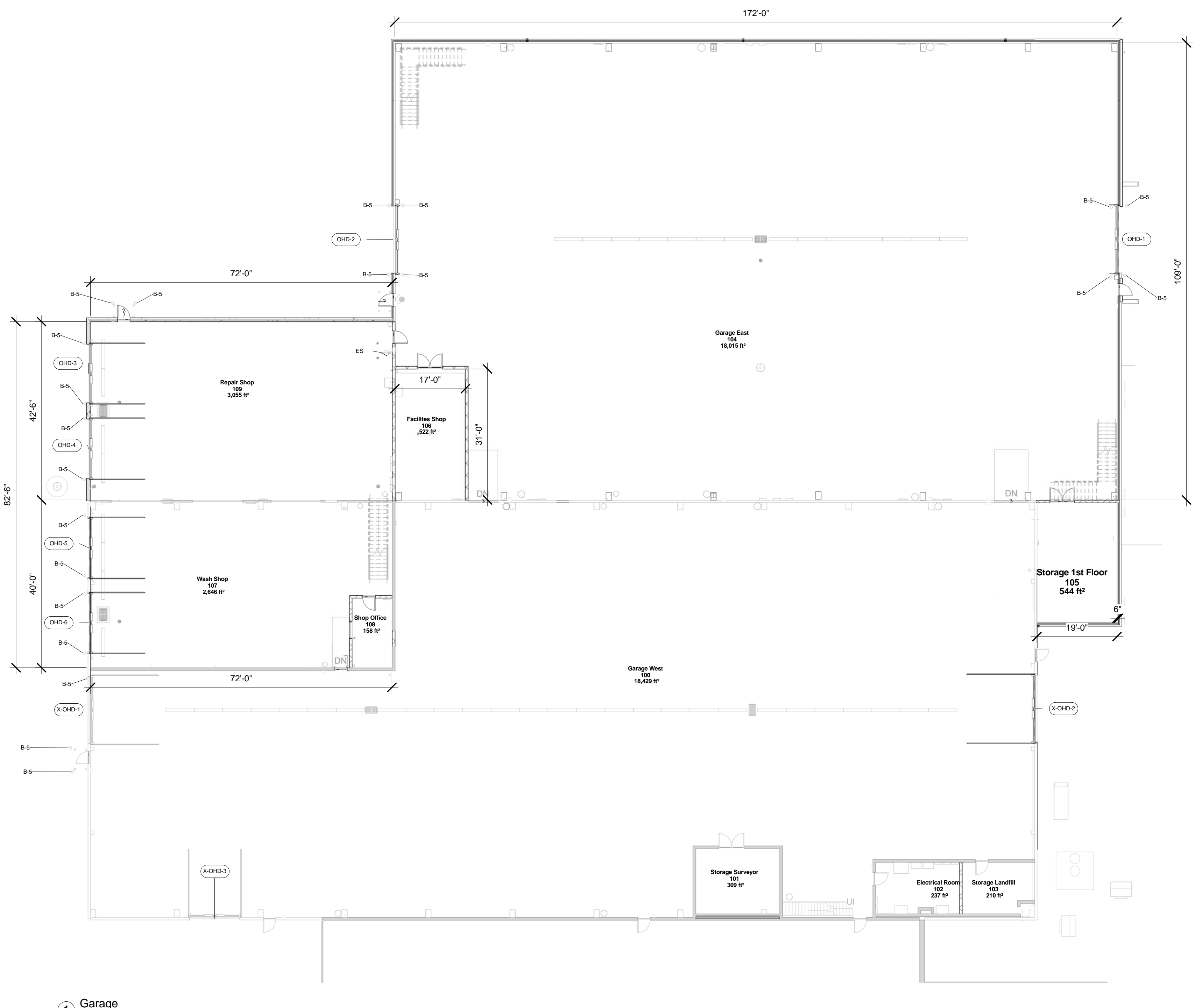
Fire Protection Design:  
Robert Novak, Kueny Architects

Architectural Design:  
Kay Schindel, P.E., City of  
Madison; 608-266-4668;  
kschindel@cityofmadison.com

**First Floor - All**

Room Finish Schedule									
Number	Name	Area	Perimeter	Average Height	Room Finish Style	Floor Finish	Wall Finish	Ceiling Finish	
100	Garage West	18,429 ft <sup>2</sup>	739'	31'	Existing	no change	no change	no change	
101	Storage Surveyor	309 ft <sup>2</sup>	73'	8'	Existing	no change	no change	no change	
102	Electrical Room	237 ft <sup>2</sup>	67'	8'	Existing	no change	no change	no change	
103	Storage Landfill	210 ft <sup>2</sup>	70'	8'	Existing	no change	no change	no change	
104	Garage East	18,015 ft <sup>2</sup>	572'	36'	Storage	Sealed Concrete	White	White	
105	Storage 1st Floor	544 ft <sup>2</sup>	95'	12'	Storage	Sealed Concrete	White	White	
106	Facilities Shop	522 ft <sup>2</sup>	96'	14'	Shop	Epoxy Light Gray	White	White	
107	Wash Shop	2,646 ft <sup>2</sup>	234'	36'	Shop	Epoxy Light Gray	White	White	
108	Shop Office	158 ft <sup>2</sup>	52'	22'	Shop	Epoxy Light Gray	White	White	
109	Repair Shop	3,055 ft <sup>2</sup>	229'	36'	Shop	Epoxy Light Gray	White	White	
201	Boiler Room	468 ft <sup>2</sup>	106'	53'	Shop	Epoxy Light Gray	White	White	
202	Shop Mezzanine	1,591 ft <sup>2</sup>	219'	12'	Storage	Sealed Concrete	White	White	
203	IT Closet	42 ft <sup>2</sup>	26'	22'	Storage	Sealed Concrete	White	White	
204	Garage Mezzanine West	2,900 ft <sup>2</sup>	536'	36'	Storage	Sealed Concrete	White	White	
205	Garage Mezzanine East	2,521 ft <sup>2</sup>	468'	36'	Storage	Sealed Concrete	White	White	
206	Storage 2nd Floor	566 ft <sup>2</sup>	97'	14'	Storage	Sealed Concrete	White	White	
207	Garage West Mezzanine	333 ft <sup>2</sup>	73'	14'	Existing	no change	no change	no change	
208	Water Heater Room XTG	190 ft <sup>2</sup>	58'	14'	Existing	no change	no change	no change	
209	File Storage XTG	513 ft <sup>2</sup>	92'	13'	Existing	no change	no change	no change	

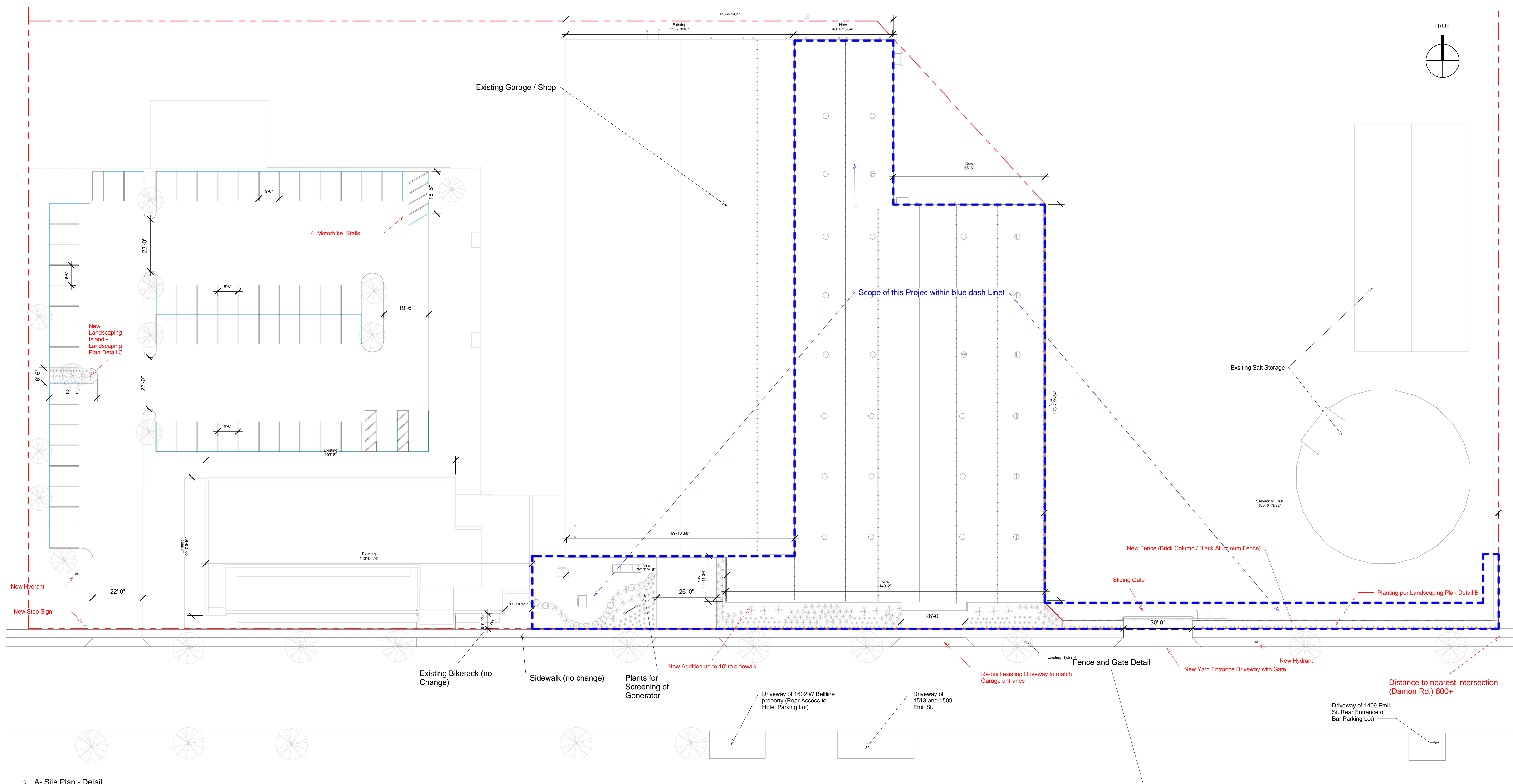
Bollard Schedule						
Type Mark	Color	Height	Diameter	Description	Count	Note
B-5	yellow	4'-0"	8"	Steel filled and capped with Concrete	23	



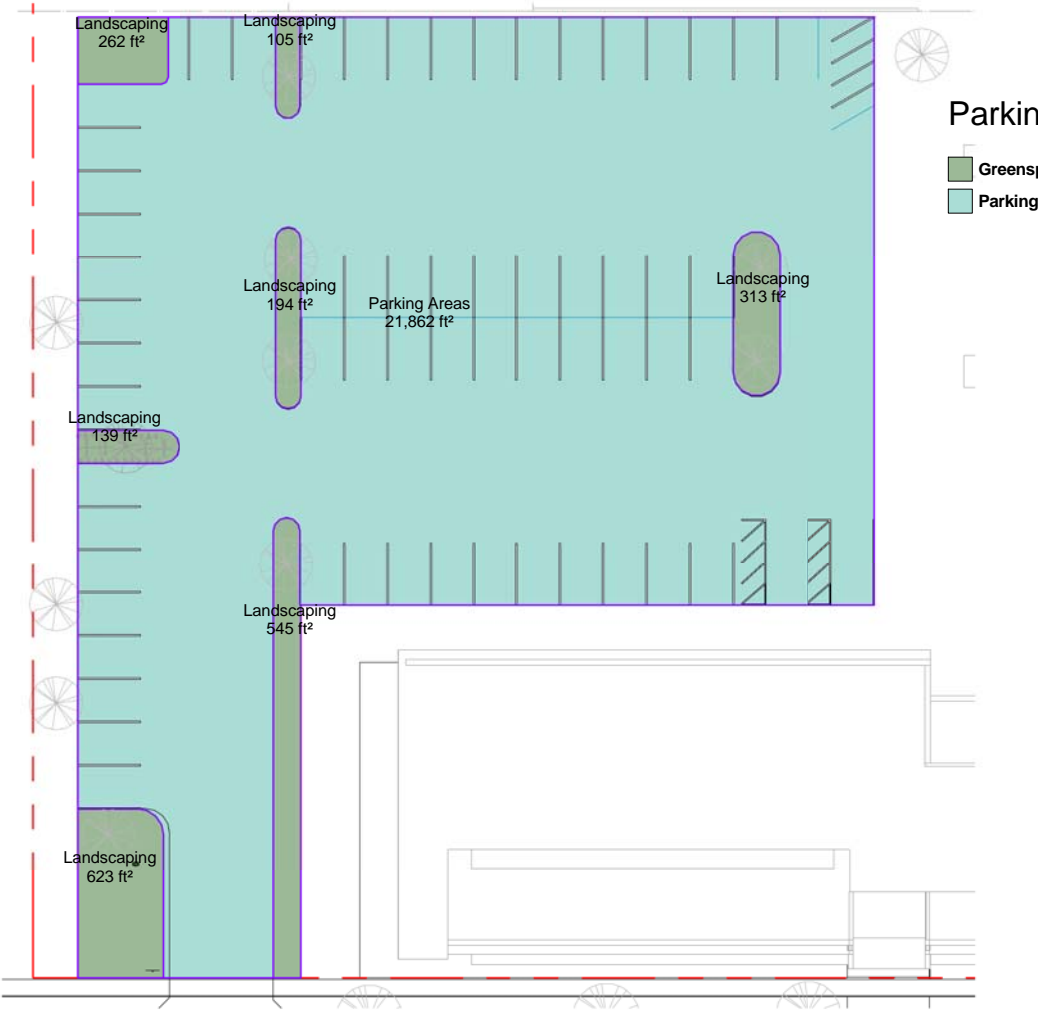
1 Garage

Window Schedule										
Mark	Description	Frame Width	Frame Height	Frame Color	Fire Rating	Safety Glass Inside	Safety Glass Outside	Insulated	Solar Protection	
E 10	Gray Tint	10'-0"	2'-0"	Sandstone	0	Yes	Yes	Yes	Yes	
E 11	Gray Tint	10'-0"	2'-0"	Sandstone	0	Yes	Yes	Yes	Yes	
E 12	Gray Tint	10'-0"	2'-0"	Sandstone	0	Yes	Yes	Yes	Yes	
E 13	Gray Tint	10'-0"	2'-0"	Sandstone	0	Yes	Yes	Yes	Yes	
E 14	Gray Tint	10'-0"	2'-0"	Sandstone	0	Yes	Yes	Yes	Yes	
E 15	Gray Tint	10'-0"	2'-0"	Sandstone	0	Yes	Yes	Yes	Yes	
E 16	Gray Tint	10'-0"	2'-0"	Sandstone	0	Yes	Yes	Yes	Yes	
E 20	Gray Tint	10'-0"	3'-0"	Sandstone	0	No	Yes	Yes	No	
E 21	Gray Tint	10'-0"	3'-0"	Sandstone	0	No	Yes	Yes	No	
E 22	Gray Tint	10'-0"	3'-0"	Sandstone	0	No	Yes	Yes	No	
E 23	Gray Tint	10'-0"	3'-0"	Sandstone	0	No	Yes	Yes	No	
E 24	Gray Tint	10'-0"	3'-0"	Sandstone	0	No	Yes	Yes	No	
E 25	Gray Tint	10'-0"	3'-0"	Sandstone	0	No	Yes	Yes	No	
E 26	Gray Tint	10'-0"	3'-0"	Sandstone	0	No	Yes	Yes	No	
I 10	Gray Tint	4'-0"	3'-8"	Gray - Light	0	Yes	Yes	Yes	Yes	
S 10	Gray Tint	10'-0"	3'-0"	Sandstone	0	No	Yes	Yes	No	
S 11	Gray Tint	3'-0"	5'-6"	Sandstone	0	No	Yes	Yes	No	
S 12	Gray Tint	10'-0"	3'-0"	Sandstone	0	No	Yes	Yes	No	
S 13	Gray Tint	10'-0"	3'-0"	Sandstone	0	No	Yes	Yes	No	
S 20	Gray Tint	10'-0"	3'-0"	Sandstone	0	No	Yes	Yes	No	

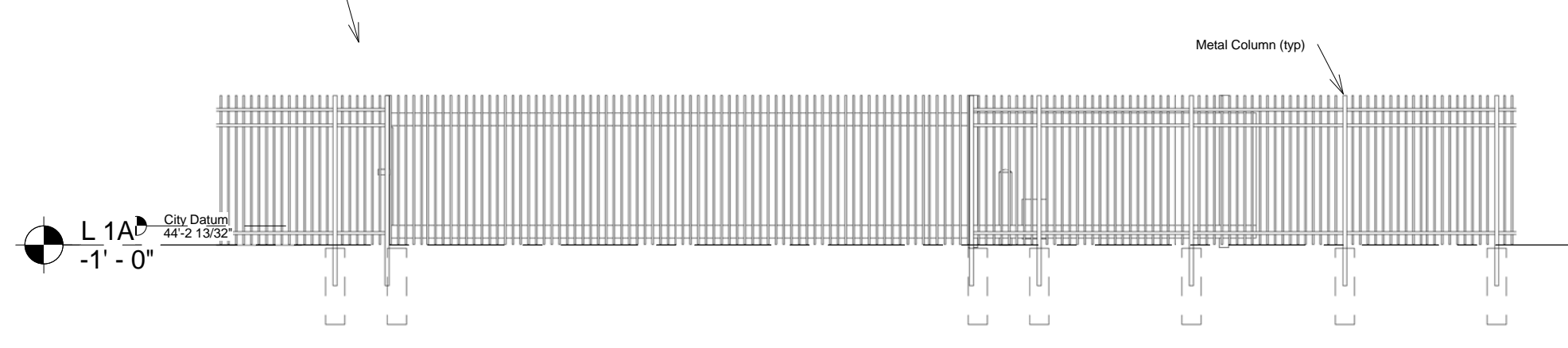
Overhead Door Schedule																
Mark	Description	Width	Height	Fire Rating	Insulated	Wet Location Rating	Frame Color	Door Color	Breakaway Height	Apparent Design Power	Poles	Voltage	Motor	Remark	OmniClass Number	OmniClass Title
OHD-1	Sectional Overhead Door	16'-0"	14'-0"	0	Yes		white	white	4'-0"	915 VA	3	480 V	Totally Enclosed Fan Cooled (TEFV), Size Motor per OHD Manufacturer.		23.17.11.17.2 5	Overhead Plastic Doors
OHD-2	Sectional Overhead Door	16'-0"	14'-0"	0	Yes		white	white	4'-0"	915 VA	3	480 V	Totally Enclosed Fan Cooled (TEFV), Size Motor per OHD Manufacturer.		23.17.11.17.2 5	Overhead Plastic Doors
OHD-3	Sectional Overhead Door	14'-0"	14'-0"	0	Yes		white	white	4'-0"	915 VA	3	480 V	Totally Enclosed Fan Cooled (TEFV), Size Motor per OHD Manufacturer.		23.17.11.17.2 5	Overhead Plastic Doors
OHD-4	Sectional Overhead Door	14'-0"	14'-0"	0	Yes		white	white	4'-0"	915 VA	3	480 V	Totally Enclosed Fan Cooled (TEFV), Size Motor per OHD Manufacturer.		23.17.11.17.2 5	Overhead Plastic Doors
OHD-5	Sectional Overhead Door	14'-0"	14'-0"	0	Yes	Washbay Rated	white	white	4'-0"	915 VA	3	480 V	Totally Enclosed Fan Cooled (TEFV), Size Motor per OHD Manufacturer.		23.17.11.17.2 5	Overhead Plastic Doors
OHD-6	Sectional Overhead Door	14'-0"	14'-0"	0	Yes	Washbay Rated	white	white	4'-0"	915 VA	3	480 V	Totally Enclosed Fan Cooled (TEFV), Size Motor per OHD Manufacturer.		23.17.11.17.2 5	Overhead Plastic Doors
X-OHD-1	Sectional Overhead Door	16'-0"	14'-0"	0	Yes		white	white	4'-0"	915 VA	3	480 V	Totally Enclosed Fan Cooled (TEFV), Size Motor per OHD Manufacturer.	Existing OHD, Install new 480 V Operator	23.17.11.17.2 5	Overhead Plastic Doors
X-OHD-2	Sectional Overhead Door	16'-0"	14'-0"	0	Yes		white	white	4'-0"	915 VA	3	480 V	Totally Enclosed Fan Cooled (TEFV), Size Motor per OHD Manufacturer.	Existing OHD, Install new 480 V Operator	23.17.11.17.2 5	Overhead Plastic Doors
X-OHD-3	Sectional Overhead Door	12'-0"	14'-0"	0	Yes		white	white	4'-0"	915 VA	3	480 V	Totally Enclosed Fan Cooled (TEFV), Size Motor per OHD Manufacturer.	Existing OHD, Install new 480 V Operator	23.17.11.17.2 5	Overhead Plastic Doors



1 A - Site Plan - Detail

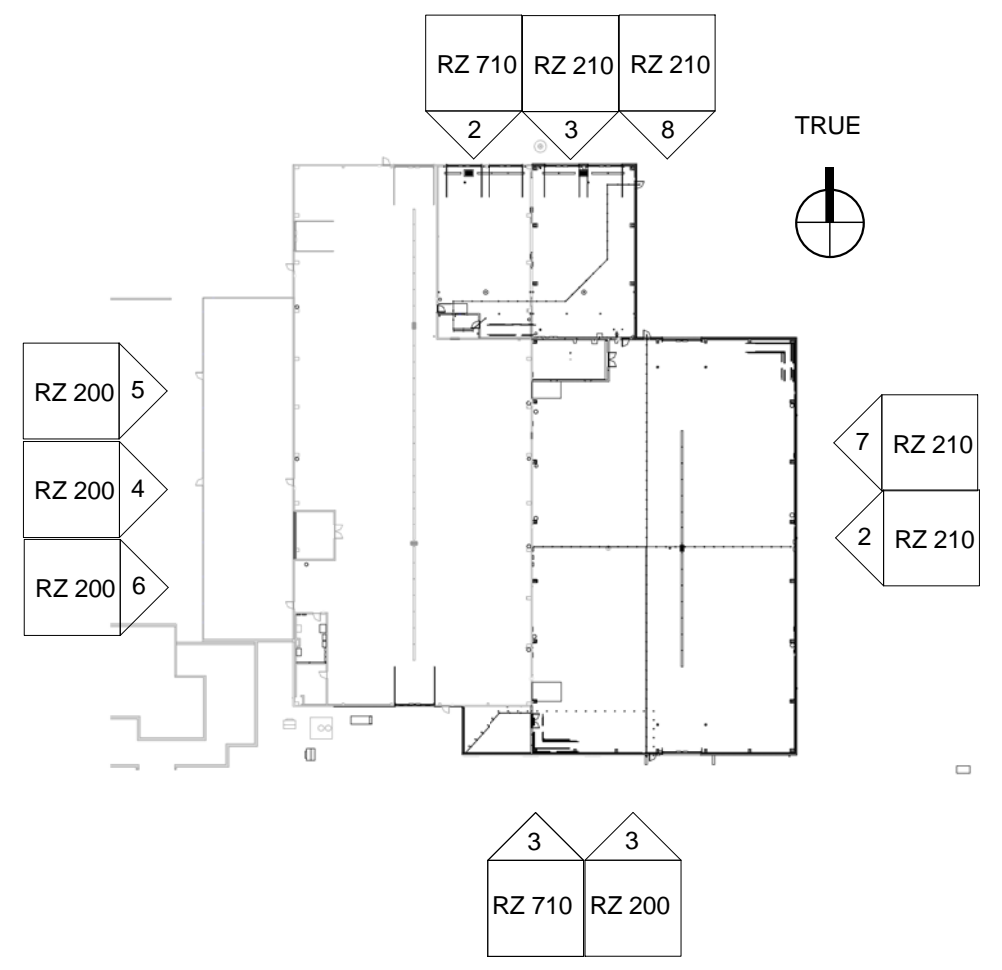


Parking Lot Greenspace and Parking...		
Area Type	Area	% of total Area
Greenspace	2,180 ft²	9%
Parking Surface	21,862 ft²	91%
	24,043 ft²	

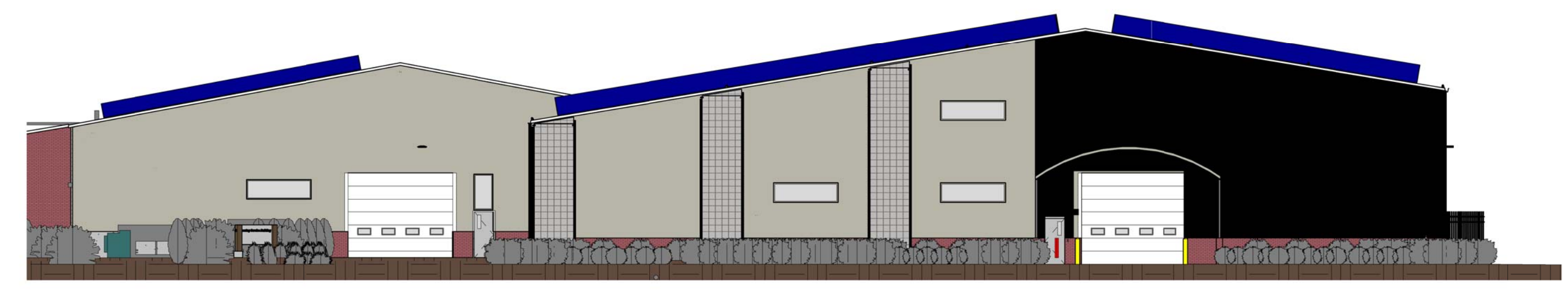


2 A - Elevation Fence and Gate

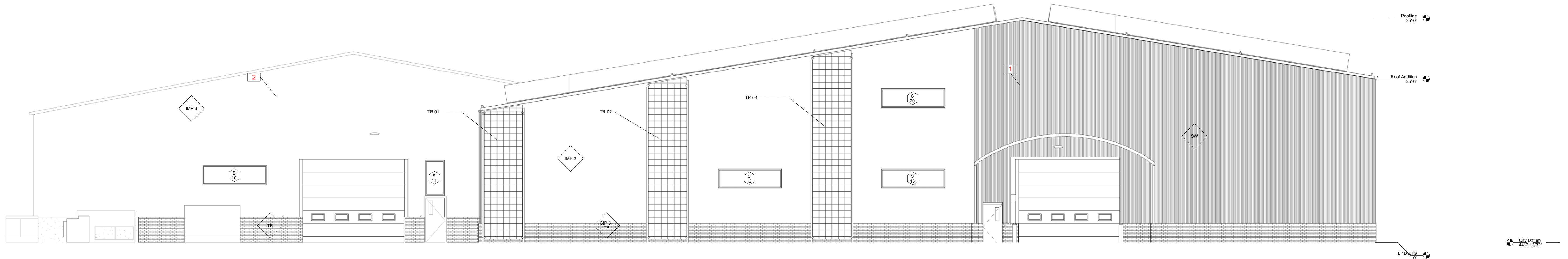
3 CR - Parking Greenspace Areas



1 A - Elevation Marker Plan



3 Presentation - Elevation South



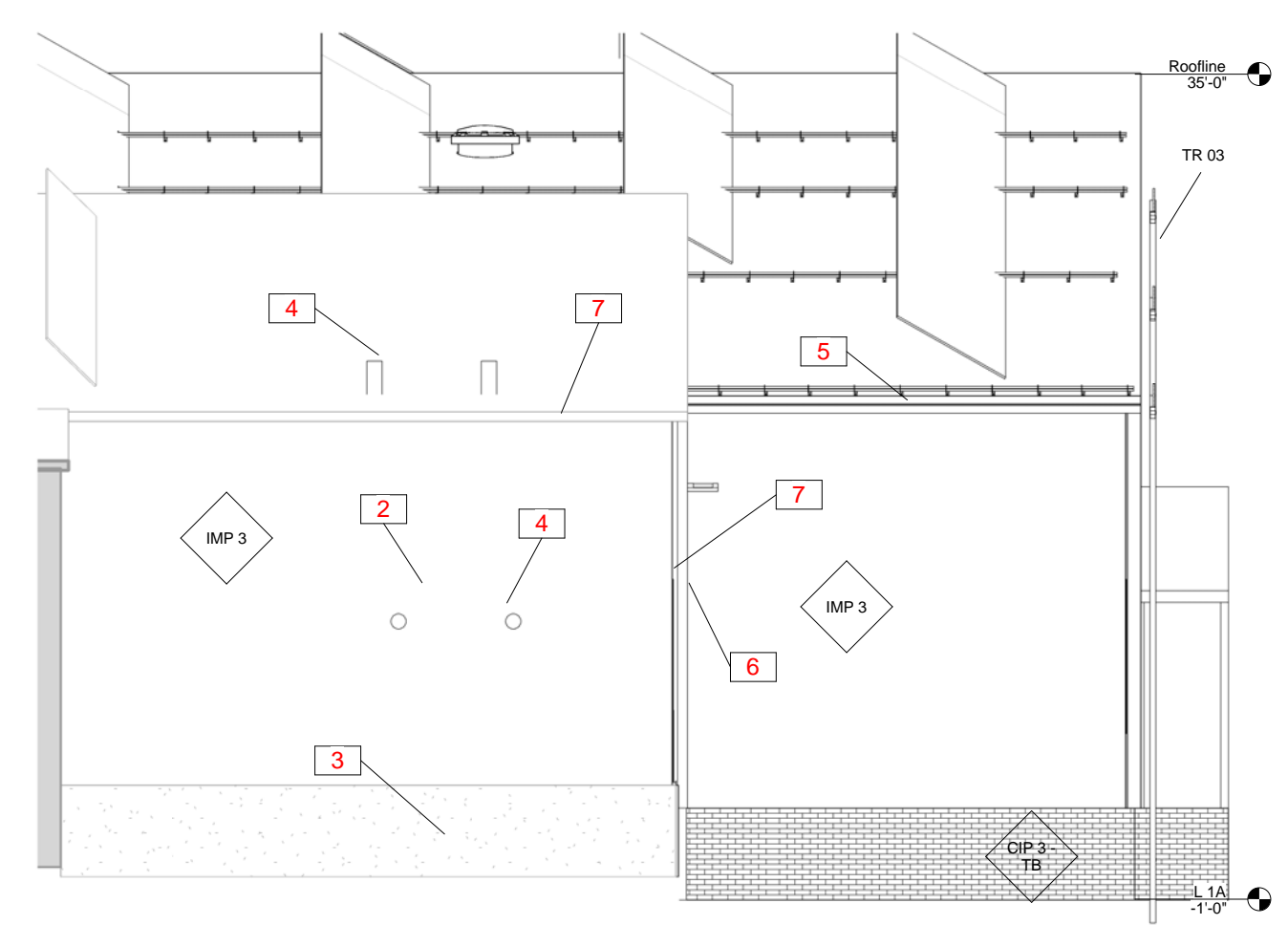
2 A - Elevation South

Trellis Schedule								
Mark	Description	Manufacturer	URL	Model	Height	Width	Post Color	Trellis Net Color
TR 01	Trellis for vine growth; galvanized steel w/ 4x 4 mesh	Green Screen	www.greenscreen.com	Trellis Panel	20'-0"	6'-0"	black	Black / Vine
TR 02	Trellis for vine growth; galvanized steel w/ 4x 4 mesh	Green Screen	www.greenscreen.com	Trellis Panel	24'-3"	6'-0"	black	Black / Vine
TR 03	Trellis for vine growth; galvanized steel w/ 4x 4 mesh	Green Screen	www.greenscreen.com	Trellis Panel	28'-6"	6'-0"	black	Black / Vine

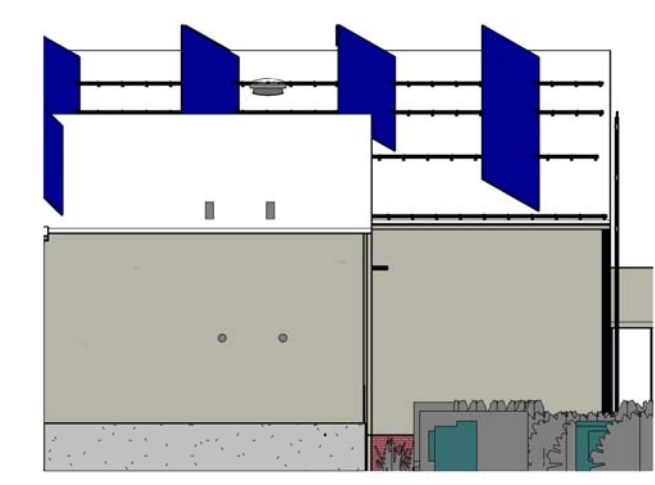
Exterior Wall Schedule						
Type Mark	Description	Manufacturer	URL	Model	Estimated Area (not for bidding)	Comments
TB	Thin Brick Thickset System	Brick it	www.brickit.com	Red Beind Vel	135 ft²	Match existing Brick
SW	Solarwall Vertical	Solarwall	www.solarwall.com	SW-150	1,543 ft²	Black
IMP 3	Insulated Metal Panel	All Weather Insulated Panels	www.awpanels.com	Mesa DM40, PVDF Sandstone; 3"	15,981 ft²	
CIP 3 - TB	Cast-in-Place Concrete w/ Insulated Core	Thermomass / Brick-It	www.thermomass.com	3" Poliso	639 ft²	
CIP 3	Cast-in-Place Concrete w/ Insulated Core	Thermomass	www.thermomass.com	3" Poliso	1,481 ft²	

Keynote Legend	
Key Value	Keynote Text
1	BLACK SOLAR WALL. INSTALL PER MANUFACTURER DESIGN APPROX. 7" OFF INSULATED PANEL WALL
2	REMOVE EXISTING SIDING AND INSTALL NEW INSULATED METAL PANEL
3	EXISTING CONCRETE. NO CHANGE
4	ROLLER AIR INTAKE AND EXHAUST. WALL TERMINATION TO MATCH WALL COLOR. ROOF TERMINATION STAINLESS STEEL
5	GUTTER OR S/D. MATCH WALL COLOR
6	5X 4 DOWN SPOUT IN WALL COLOR. COORDINATE WITH CIVL ENGINEERING DESIGN TO TERMINATE IN STORMWATER PIPE. REPLACE GUTTER AND DOWNSPOUT IF REQUIRED. MAKE EXISTING GUTTER AND SPOUT LOOK SIMILAR TO NEW INSTALLATION UNDER THIS CONTRACT. TIE INTO STORMSEWER
7	

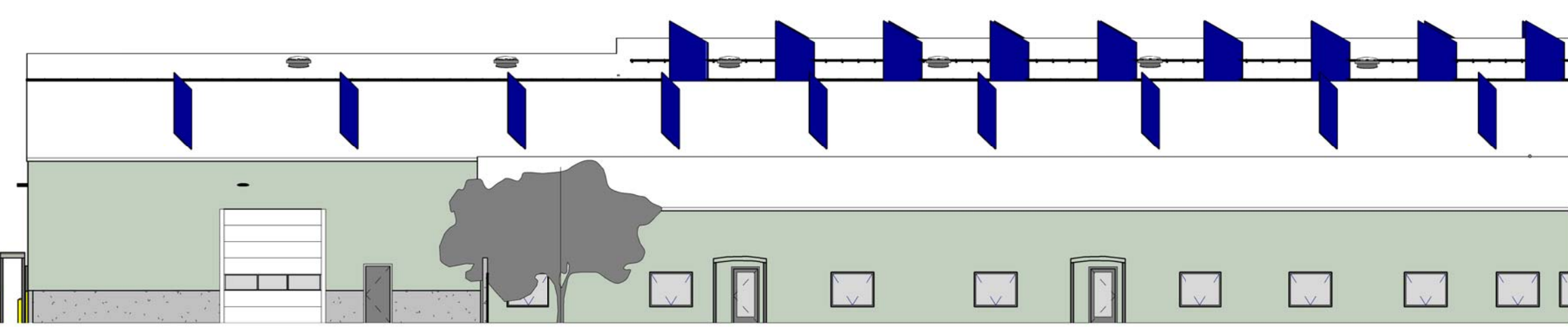
Window Schedule									
Mark	Description	Frame Width	Frame Height	Frame Color	Fire Rating	Safety Glass Inside	Safety Glass Outside	Insulated	Solar Protection
E 10	Gray Tint	10'-0"	2'-0"	Sandstone	0	Yes	Yes	Yes	Yes
E 11	Gray Tint	10'-0"	2'-0"	Sandstone	0	Yes	Yes	Yes	Yes
E 12	Gray Tint	10'-0"	2'-0"	Sandstone	0	Yes	Yes	Yes	Yes
E 13	Gray Tint	10'-0"	2'-0"	Sandstone	0	Yes	Yes	Yes	Yes
E 14	Gray Tint	10'-0"	2'-0"	Sandstone	0	Yes	Yes	Yes	Yes
E 15	Gray Tint	10'-0"	2'-0"	Sandstone	0	Yes	Yes	Yes	Yes
E 16	Gray Tint	10'-0"	2'-0"	Sandstone	0	Yes	Yes	Yes	Yes
E 20	Gray Tint	10'-0"	3'-0"	Sandstone	0	No	Yes	Yes	No
E 21	Gray Tint	10'-0"	3'-0"	Sandstone	0	No	Yes	Yes	No
E 22	Gray Tint	10'-0"	3'-0"	Sandstone	0	No	Yes	Yes	No
E 23	Gray Tint	10'-0"	3'-0"	Sandstone	0	No	Yes	Yes	No
E 24	Gray Tint	10'-0"	3'-0"	Sandstone	0	No	Yes	Yes	No
E 25	Gray Tint	10'-0"	3'-0"	Sandstone	0	No	Yes	Yes	No
E 26	Gray Tint	10'-0"	3'-0"	Sandstone	0	No	Yes	Yes	No
I 10	Gray Tint	4'-0"	3'-8"	Gray - Light	0	Yes	Yes	Yes	Yes
S 10	Gray Tint	10'-0"	3'-0"	Sandstone	0	No	Yes	Yes	No
S 11	Gray Tint	3'-0"	5'-6"	Sandstone	0	No	Yes	Yes	No
S 12	Gray Tint	10'-0"	3'-0"	Sandstone	0	No	Yes	Yes	No
S 13	Gray Tint	10'-0"	3'-0"	Sandstone	0	No	Yes	Yes	No
S 20	Gray Tint	10'-0"	3'-0"	Sandstone	0	No	Yes	Yes	No



4 A - Elevation West S



6 Presentation Elevation West S



5 Presentation Elevation West N



Design prepared for:  
**Engineering Division**

**Engineering Operations  
Building Addition**

Location:  
1600 Emil St.  
Madison, WI 53713

Contract: TBD  
Project: 10349  
Common Council Approval:

Lighting Design:  
Kay Schindel, P.E., City of  
Madison; 608-266-4668;  
kschindel@cityofmadison.com

Civil Design:  
Eric Dundee, P.E., City of  
Madison

Landscaping Design:  
Sarah Lerner, L.P.A., City of  
Madison; 608-261-4281;  
slerner@cityofmadison.com

Electrical Design:  
Dave Hanson, P.E., Kueny  
Architects

Plumbing Design:  
Kay Schindel, P.E., City of  
Madison; 608-266-4668;  
kschindel@cityofmadison.com

HVAC Design:  
Kay Schindel, P.E., City of  
Madison; 608-266-4668;  
kschindel@cityofmadison.com

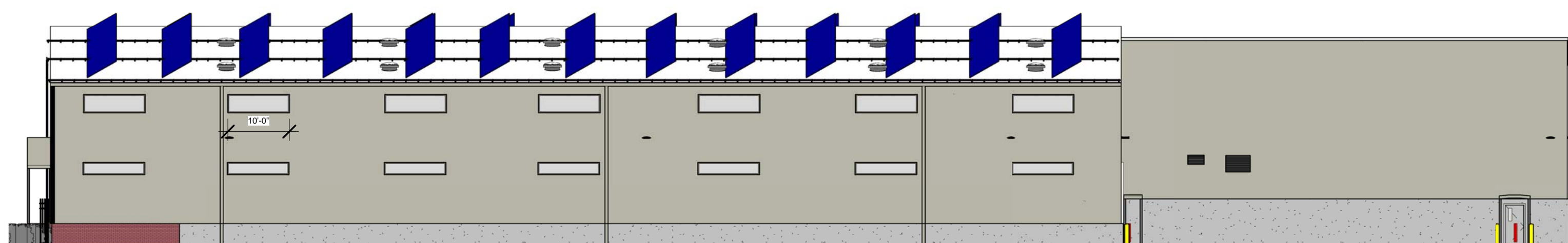
Structural Design:  
John Schmidbauer, P.E.,  
Kueny Architects

Fire Protection Design:  
Robert Novak, Kueny Architects

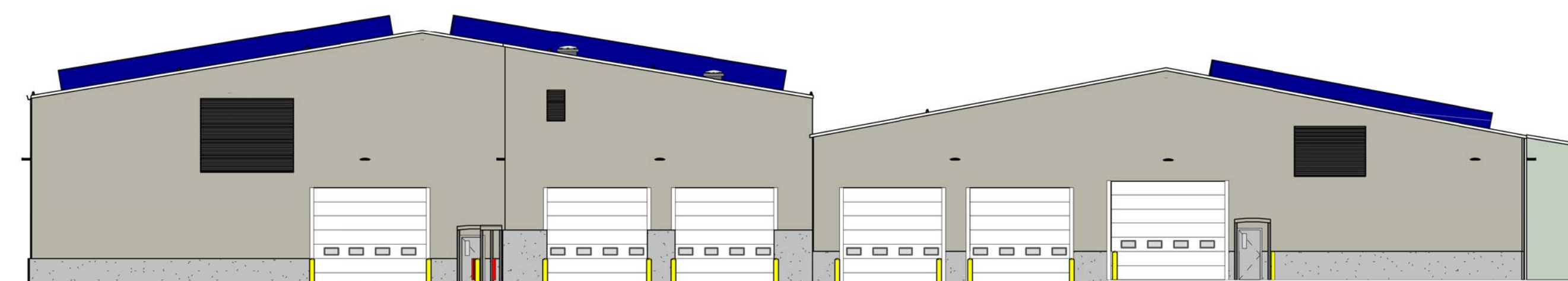
Architectural Design:  
Kay Schindel, P.E., City of  
Madison; 608-266-4668;  
kschindel@cityofmadison.com



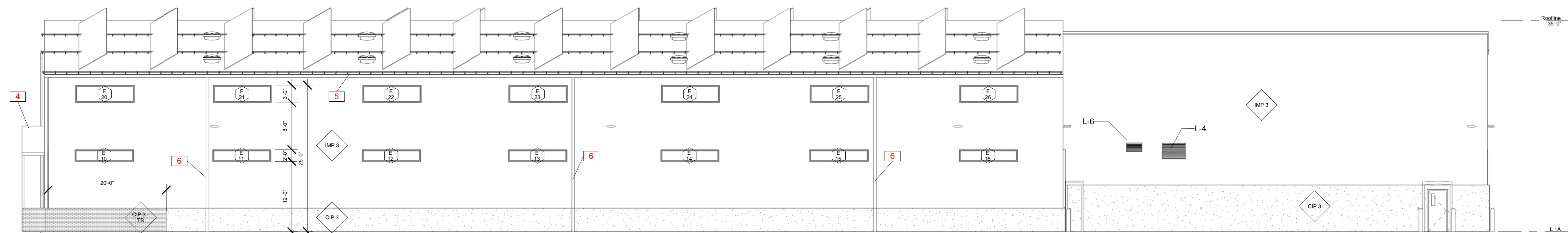
3 A - Elevation North



7 Presentation - Elevation East



8 Presentation - Elevation North



2 A - Elevation East

Louver Schedule										
Mark	Manufacturer	Model	URL	Airflow	Depth	Height	Width	Color	OmniClass Number	OmniClass Title
L-1	Greenheck	ESD 403	www.greenheck.com	2,670 CFM	4"	4'-4"	2'-6"	Sandstone	23.17.21.11.15.11	Fixed Exterior Louvers and Grilles
L-2	Greenheck	ESD 403	www.greenheck.com	25,800 CFM	4"	7'-0"	10'-0"	Sandstone	23.17.21.11.15.11	Fixed Exterior Louvers and Grilles
L-3	Greenheck	ESD 403	www.greenheck.com	1,900 CFM	4"	2'-6"	2'-6"	Sandstone	23.17.21.11.15.11	Fixed Exterior Louvers and Grilles
L-4	Greenheck	EHH 401	www.greenheck.com	6,600 CFM	4"	2'-8"	4'-0"	Sandstone	23.17.21.11.15.11	Fixed Exterior Louvers and Grilles
L-5	Greenheck	EHH 401	www.greenheck.com	27,000 CFM	4"	10'-4"	13'-0"	Sandstone	23.17.21.11.15.11	Fixed Exterior Louvers and Grilles
L-6	Greenheck	EHH 401	www.greenheck.com	800 CFM	4"	1'-6"	2'-8"	Sandstone	23.17.21.11.15.11	Fixed Exterior Louvers and Grilles

Keynote Legend	
Key Value	Keynote Text
1	REMOVE EXISTING SIDING AND INSTALL NEW INSULATED METAL PANEL
2	EXISTING CONCRETE, NO CHANGE
3	TERMINATE NEW PANELS AT CORNER, PROVIDE AIRTIGHT CONNECTION AND INSULATE TO PREVENT THERMAL BRIDGING. PROTECT INSULATION IN PANEL WITH SECURE SHEETMETAL
4	STANDING SEAM ROOF TO MATCH WALL COLOR
5	GUTTERS 66 TYP MATCH WALL COLOR
6	4X 6 DOWN SPOUT IN WALL COLOR, COORDINATE WITH CIVIL ENGINEERING DESIGN TO TERMINATE IN STORMWATER PIPE.

Exterior Wall Schedule						
Type Mark	Description	Manufacturer	URL	Model	Estimated Area (not for bidding)	Comments
TB	Thin Brick Thickset System	Brick it	www.Brickit.com	Red Belnd Vel	135 R <sup>2</sup>	Match existing Brick
SW	Solarwall Vertical	Solarwall	www.Solarwall.com	SW-150	1,543 R <sup>2</sup>	Black
IMP 3	Insulated Metal Panel	All Weather Insulated Panels	www.Awipanel.com	Mesa DM40, PVDF Sandstone, 3"	15,981 R <sup>2</sup>	
CIP 3 - TB	Cast-in-Place Concrete w/ Insulated Core	Thermomass / Brick-It	www.thermomass.com	3" Polyiso	639 R <sup>2</sup>	
CIP 3	Cast-in-Place Concrete w/ Insulated Core	Thermomass	www.Thermomass.com	3" Polyiso	1,481 R <sup>2</sup>	

**Elevations  
East and North**

**RZ 210**

Print Date:  
5/19/2015 7:17:11 PM



Existing View from South



1 Rendering from South



Existing View from SE



Existing View from SSE



2 Rendering Street View from SE



Existing View from SW



4 Rendering Street View from SW



View to SE across Emil St.



View to E of Emil St.



View to SE across Emil St.



View to NE from Emil St.



View to SE across Emil St.



View to S from across Emil St.



Design prepared for:  
**Engineering Division**

**Engineering Operations  
Building Addition**

Location:  
1600 Emil St.  
Madison, WI 53713

Contract: TBD  
Project: 10349  
Common Council Approval:

Lighting Design:  
Kay Schindel, P.E., City of  
Madison; 608-266-4668;  
kschindel@cityofmadison.com

Civil Design:  
Eric Dundee, P.E., City of  
Madison

Landscaping Design:  
Sarah Lerner, LPA., City of  
Madison; 608-261-4281;  
slerner@cityofmadison.com

Electrical Design:  
Dave Hanson, P.E., Kueny  
Architects

Plumbing Design:  
Kay Schindel, P.E., City of  
Madison; 608-266-4668;  
kschindel@cityofmadison.com

HVAC Design:  
Kay Schindel, P.E., City of  
Madison; 608-266-4668;  
kschindel@cityofmadison.com

Structural Design:  
John Schmidbauer, P.E.,  
Kueny Architects

Fire Protection Design:  
Robert Novak, Kueny Architects

Architectural Design:  
Kay Schindel, P.E., City of  
Madison; 608-266-4668;  
kschindel@cityofmadison.com

**Existing and  
Proposed  
Street Views**

**RZ 220**

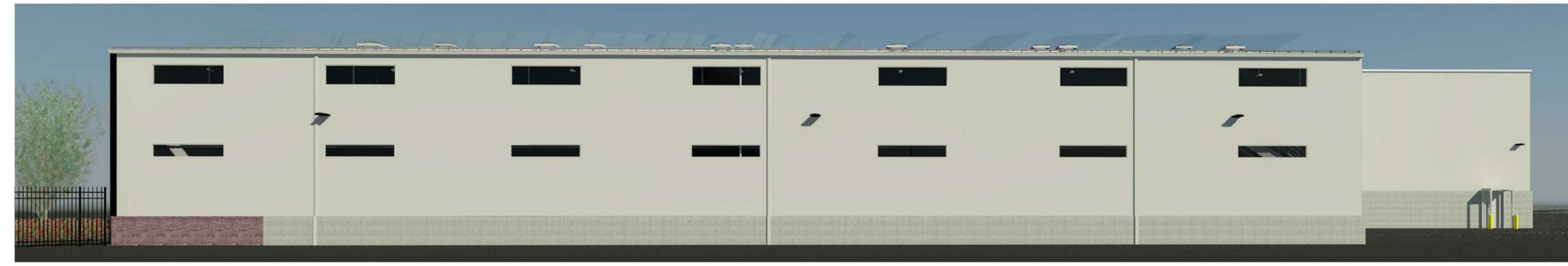
Print Date:  
5/19/2015 7:17:36 PM



Existing View of East Elevation



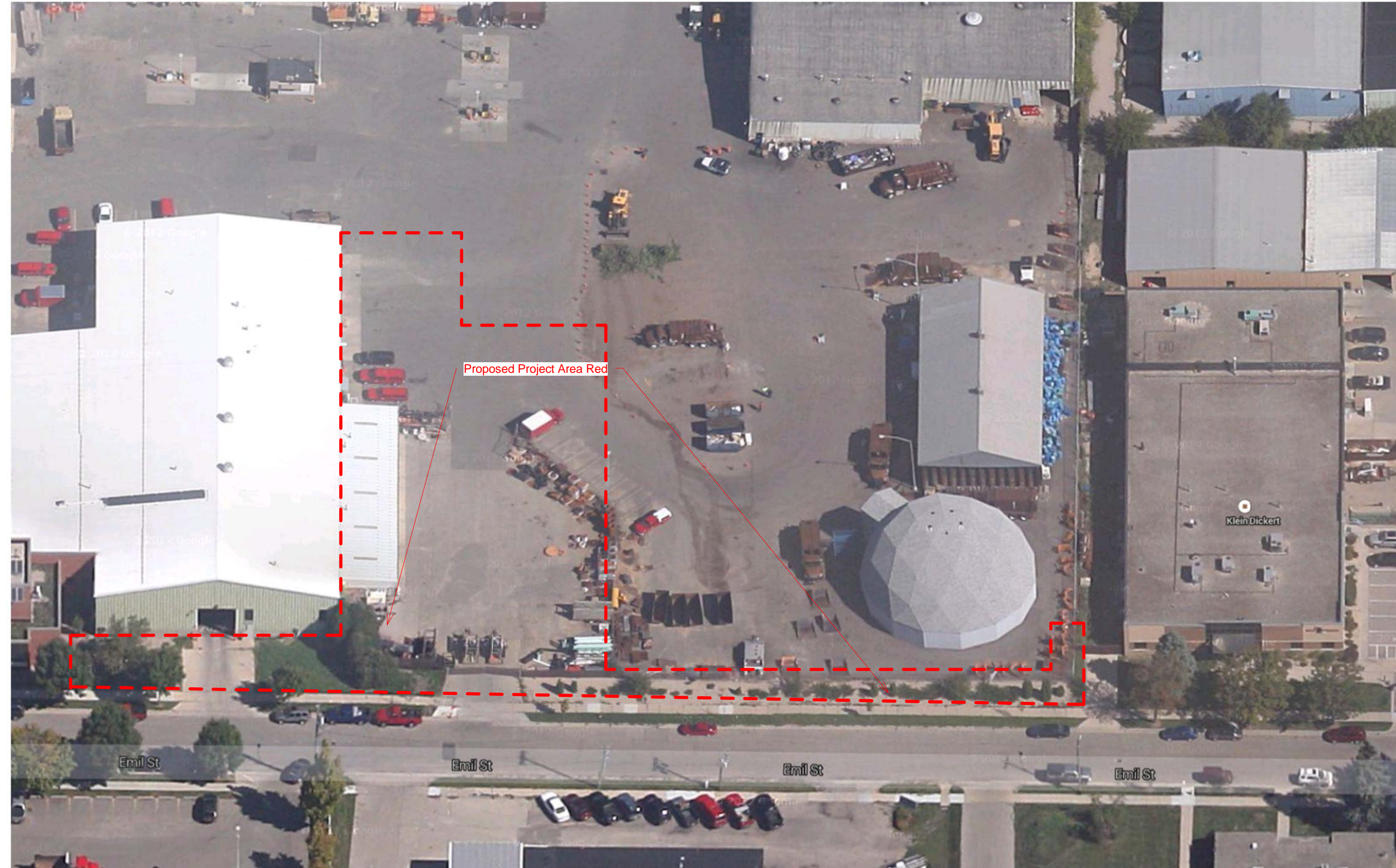
Existing View of North Elevation



1 Rendering from East



2 Rendering from North



Existing Bird's View from S (Scope of project outlined in red)



Design prepared for:  
Engineering Division

Engineering Operations  
Building Addition

Location:  
1600 Emil St.  
Madison, WI 53713

Contract: TBD  
Project: 10349  
Common Council Approval:

Lighting Design:  
Kay Schindel, P.E., City of  
Madison; 608-266-4668;  
kschindel@cityofmadison.com

Civil Design:  
Eric Dundee, P.E., City of  
Madison

Landscaping Design:  
Sarah Lerner, L.P.A., City of  
Madison; 608-266-4281;  
slerner@cityofmadison.com

Electrical Design:  
Dave Hanson, P.E., Kueny  
Architects

Plumbing Design:  
Kay Schindel, P.E., City of  
Madison; 608-266-4668;  
kschindel@cityofmadison.com

HVAC Design:  
Kay Schindel, P.E., City of  
Madison; 608-266-4668;  
kschindel@cityofmadison.com

Structural Design:  
John Schmidbauer, P.E.,  
Kueny Architects

Fire Protection Design:  
Robert Novak, Kueny Architects

Architectural Design:  
Kay Schindel, P.E., City of  
Madison; 608-266-4668;  
kschindel@cityofmadison.com

Existing and  
Proposed Yard  
Views

RZ 230

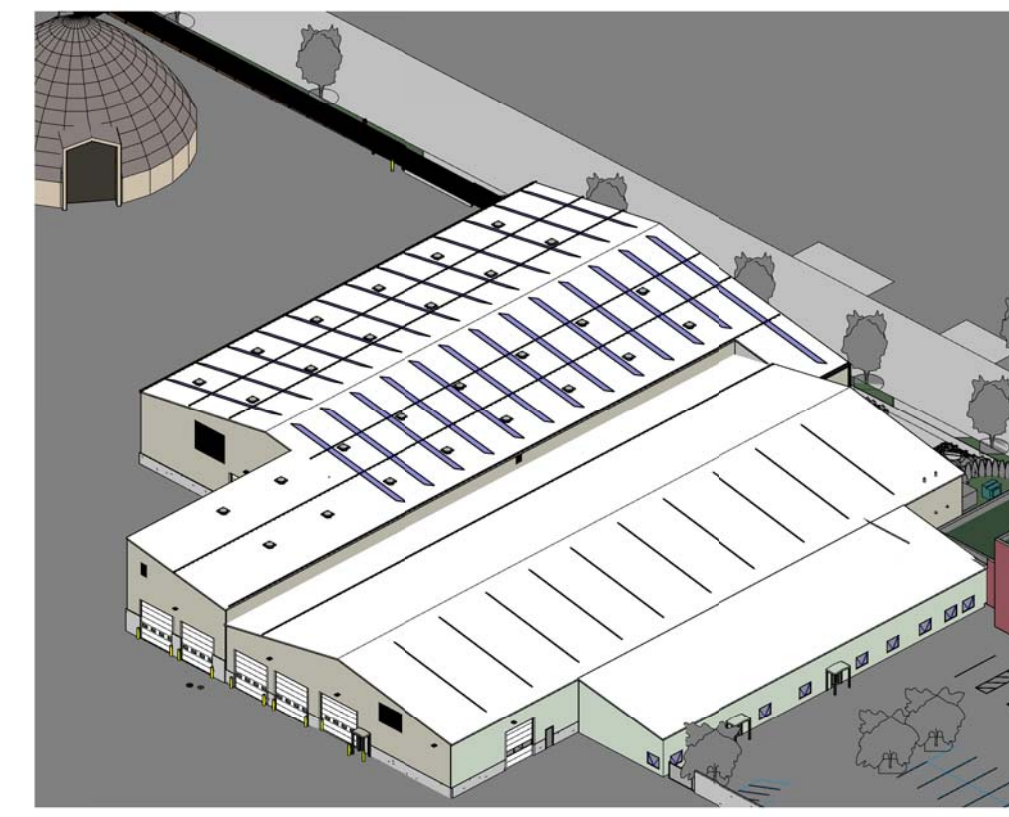
Print Date:  
5/19/2015 7:17:55 PM



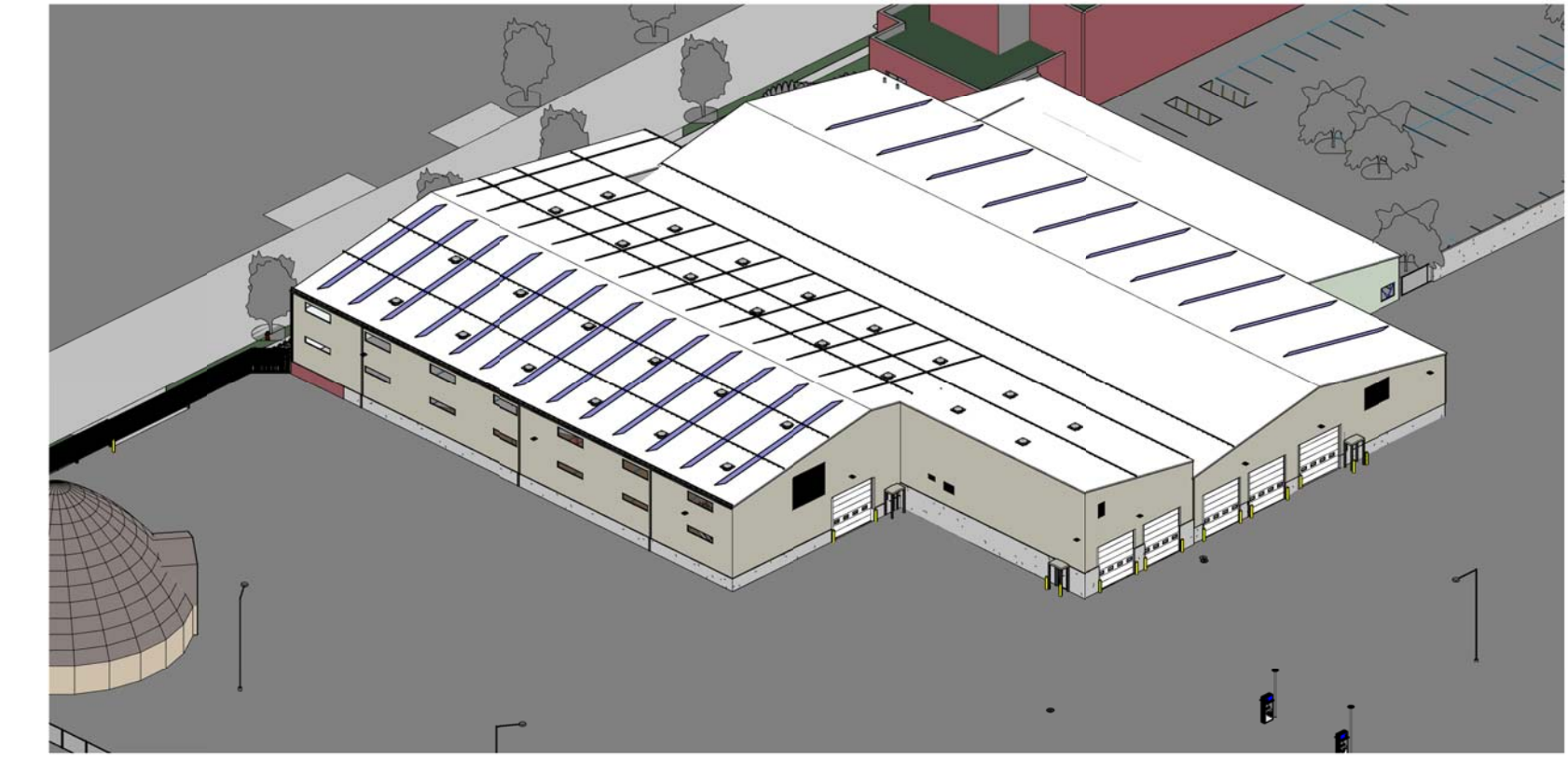
1 Complete - Bird's View from SE



2 Complete - Bird's View from SW



3 Complete - Bird's View from NW



4 Complete Bird's View from NE



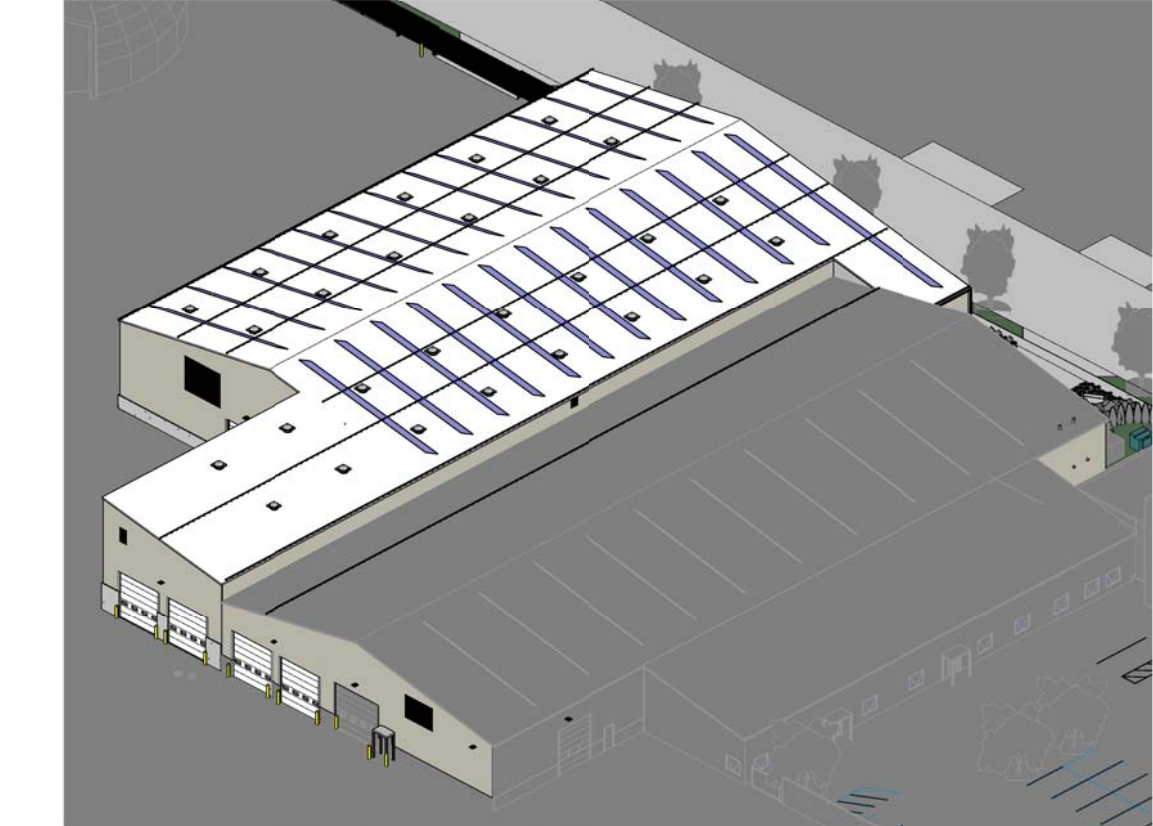
5 Project - Bird's View from SE



6 Project - Bird's View from SW



7 Project - Bird's View from NE



8 Project - Bird's View from NW



Design prepared for:  
Engineering Division

Engineering Operations  
Building Addition

Location:  
1600 Emil St.  
Madison, WI 53713

Contract: TBD  
Project: 10349  
Common Council Approval:

Lighting Design:  
Kay Schindel, P.E., City of  
Madison; 608-266-4668;  
kschindel@cityofmadison.com

Civil Design:  
Eric Dundee, P.E., City of  
Madison

Landscaping Design:  
Sarah Lerner, L.P.A., City of  
Madison; 608-261-4281;  
slerner@cityofmadison.com

Electrical Design:  
Dave Hanson, P.E., Kueny  
Architects

Plumbing Design:  
Kay Schindel, P.E., City of  
Madison; 608-266-4668;  
kschindel@cityofmadison.com

HVAC Design:  
Kay Schindel, P.E., City of  
Madison; 608-266-4668;  
kschindel@cityofmadison.com

Structural Design:  
John Schmidbauer, P.E.,  
Kueny Architects

Fire Protection Design:  
Robert Novak, Kueny Architects

Architectural Design:  
Kay Schindel, P.E., City of  
Madison; 608-266-4668;  
kschindel@cityofmadison.com

Bird Views of  
Proposed  
Building

RZ 240

Print Date:  
5/19/2015 7:19:44 PM