

# Odana Area Plan

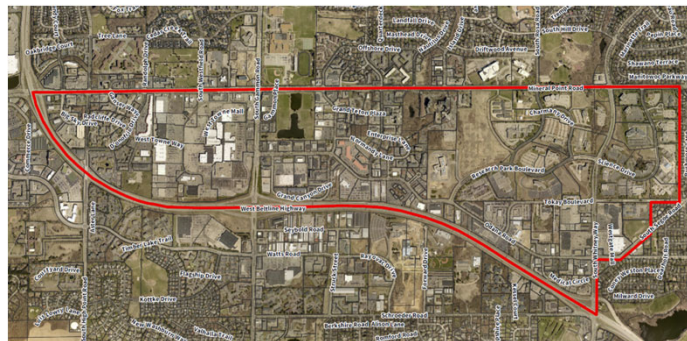


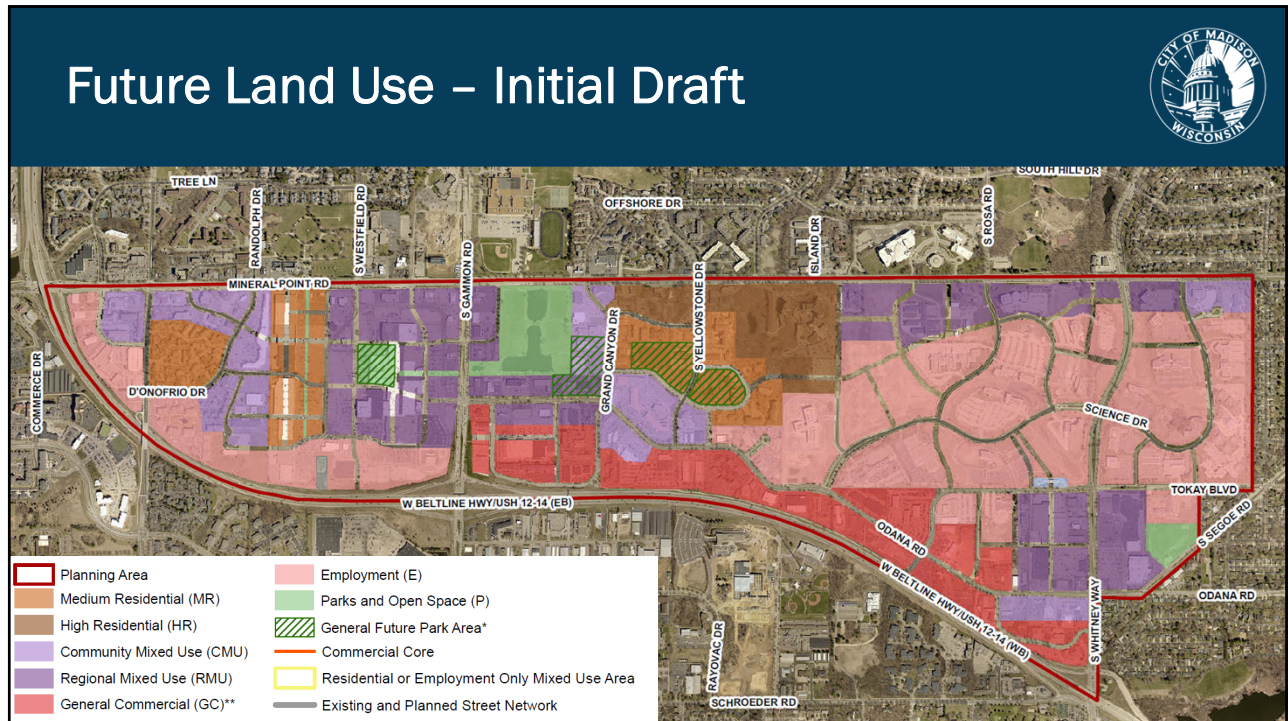
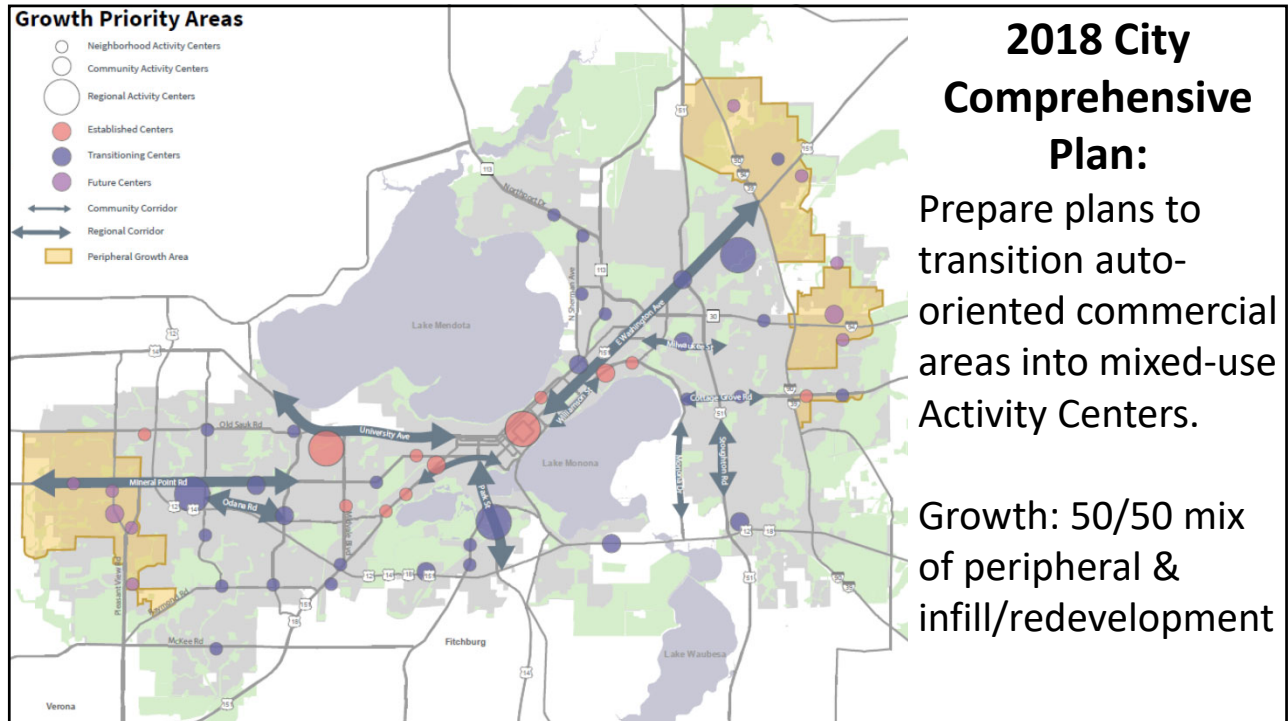
Transportation Policy and Planning Board  
August 16, 2021

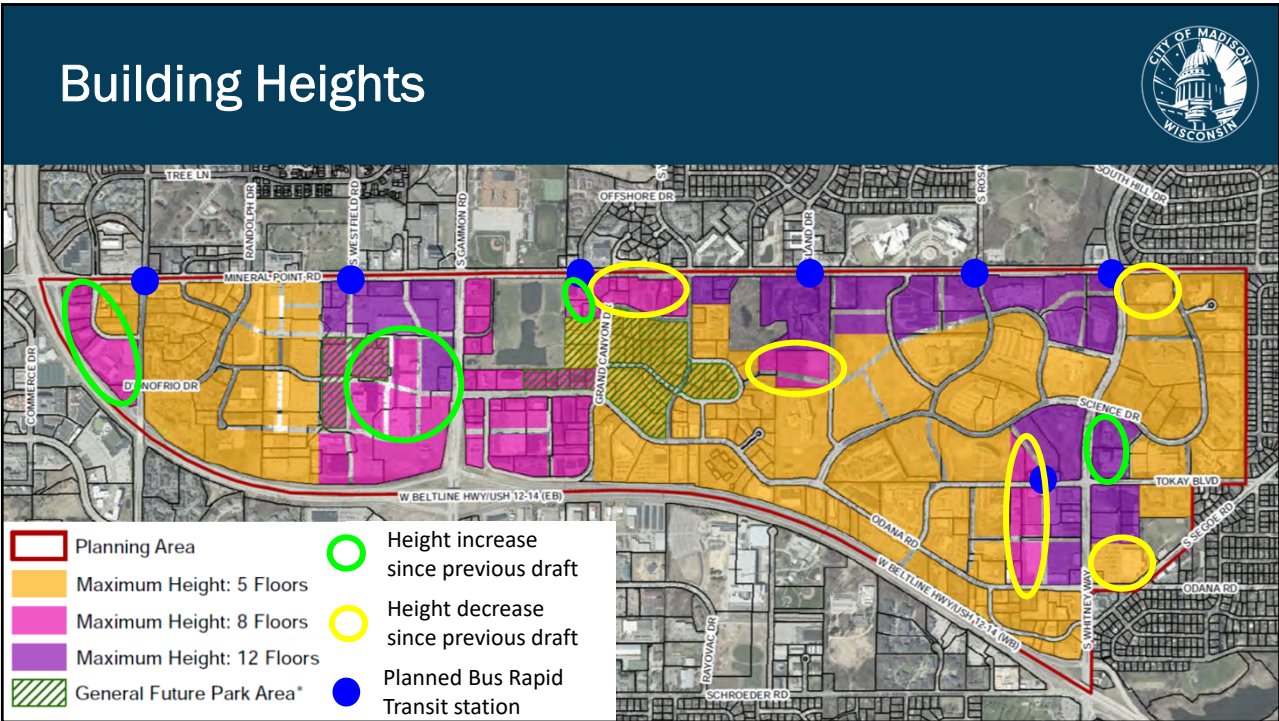
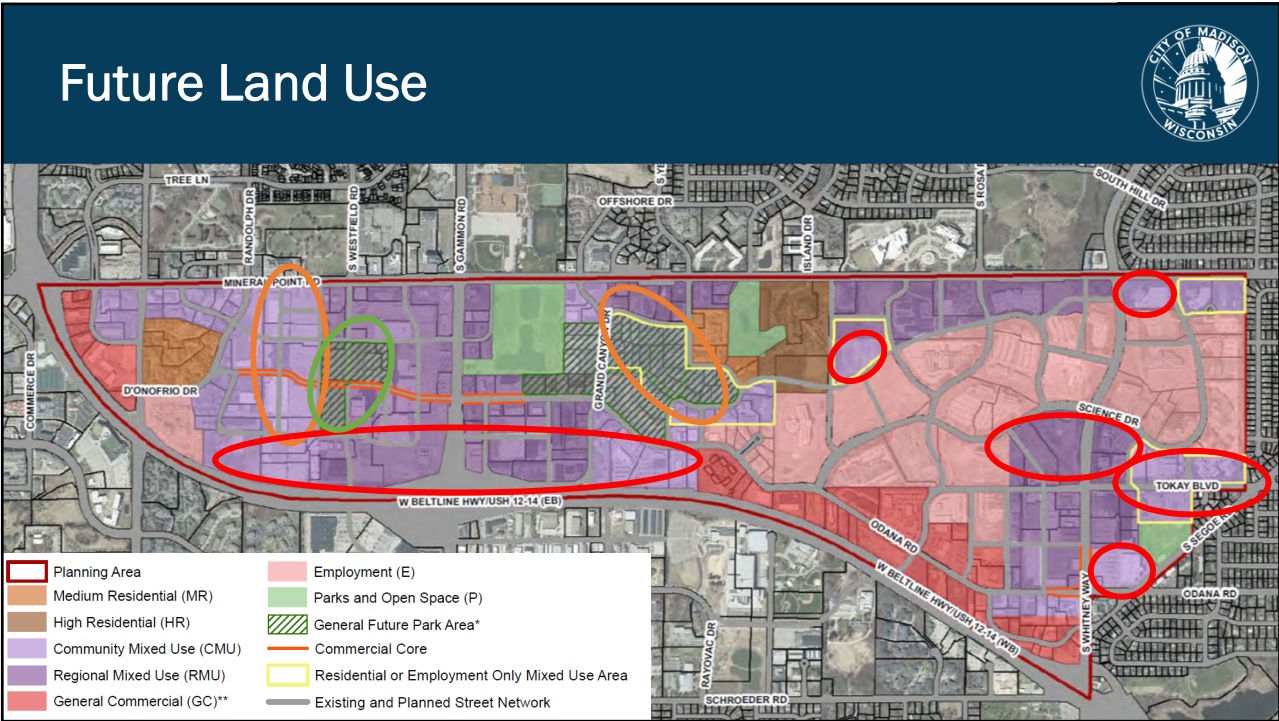
## Odana Area Plan - Background



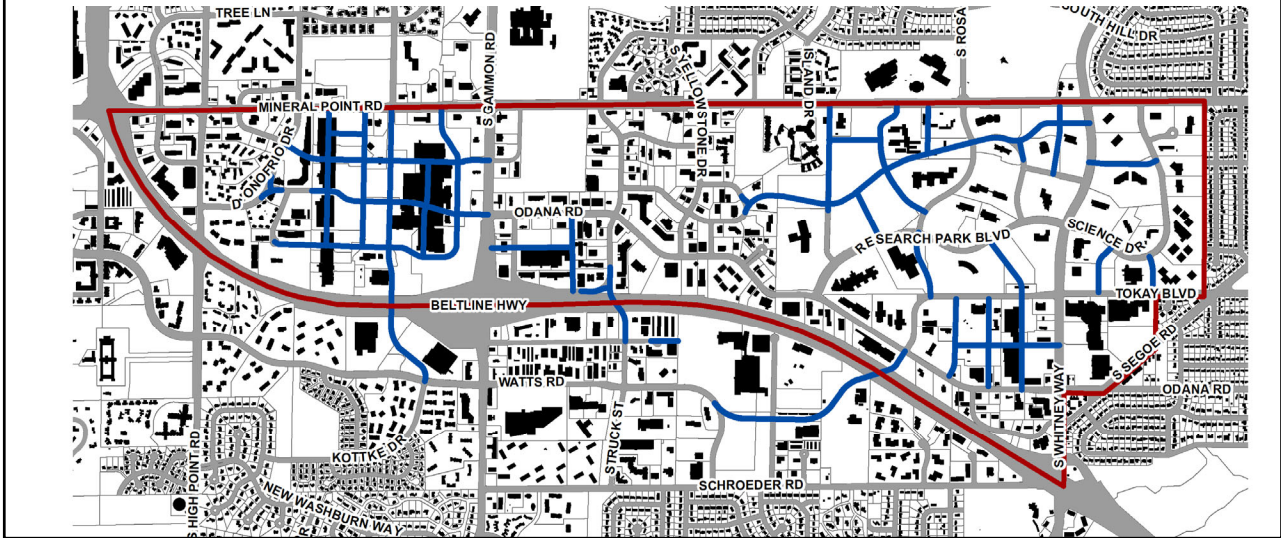
- Provide guidance on:
  - Future land uses
  - Transportation improvements (street, bike, and pedestrian connectivity)
  - Transit-oriented redevelopment
  - Parks and open space, stormwater management (in conjunction with watershed studies)
  - Economic development, community services, housing.



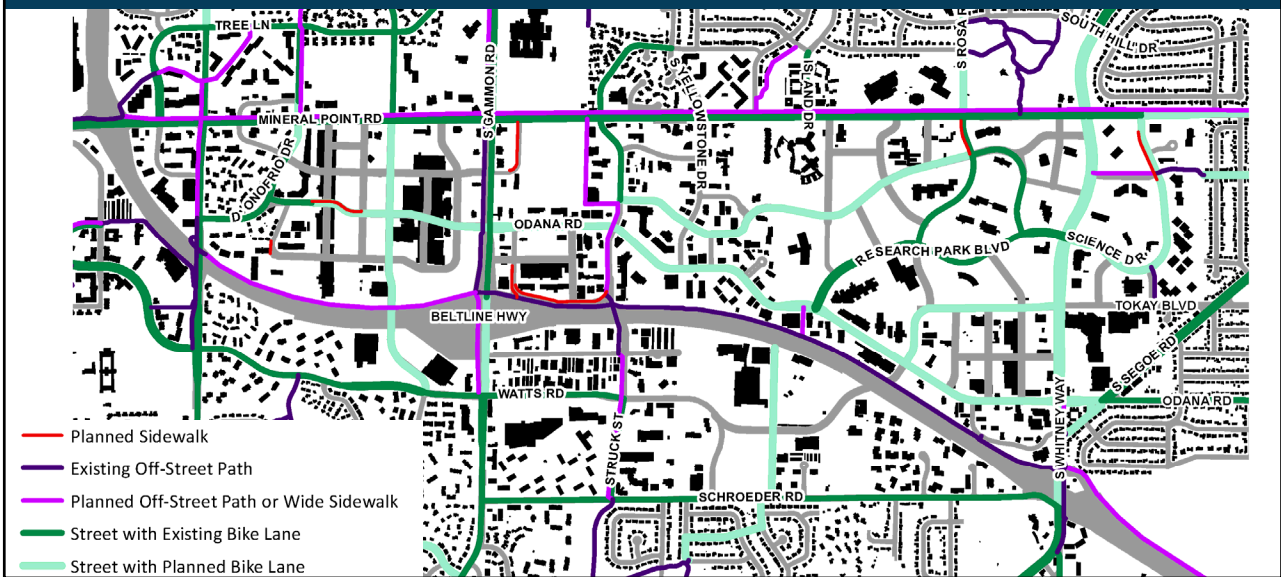




# Street Network



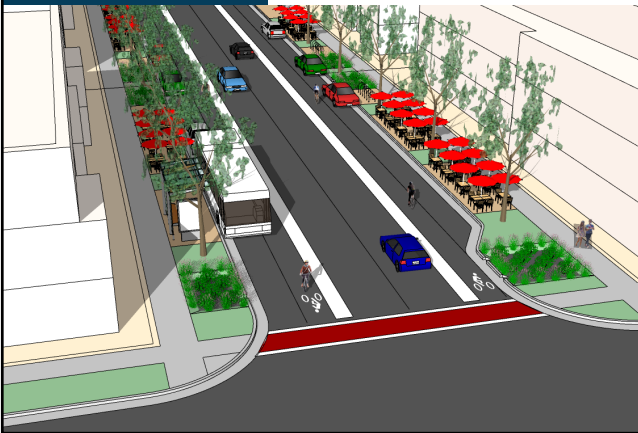
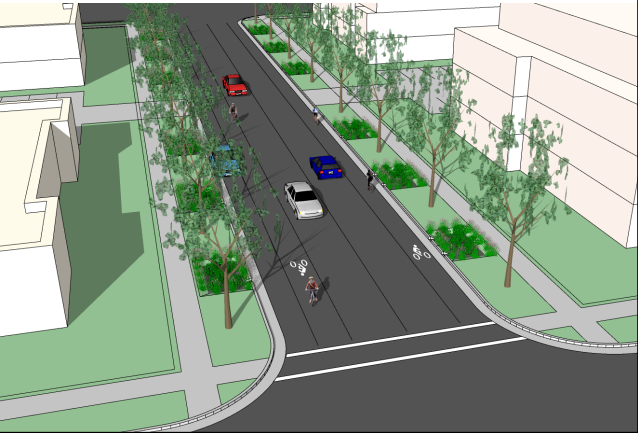
# Bike and Pedestrian Network




Potential  
Street  
Sections

New Street Section	Recommended ROW Width	Sidewalks Both Sides?	Terrace?	Dedicated Bicycle Facility?	On-Street Parking
Odana Rd (Gammon to D'onofrio)	90'	Y	Y (10' mln. recommended)	Y (on street, buffered)	Both sides
Westfield Rd (Mineral Point to Watts)	80'	Y	Y (10' mln. recommended)	Y (on street)	Both sides
Charmany Dr (Rosa to Normandy)*	80'	Y	Y (10' mln. recommended)	Y (on street)	One side
Local Streets	66'	Y	Y	N	One or both sides, as needed to support surrounding uses (wider terraces possible if only one side)

\*Grades may limit ROW width on the western section of this road, approaching Normandy Lane; on-street parking and a wide terrace may need to be eliminated to create the connection.

## Proactive Rezoning and Official Mapping





**Why?**

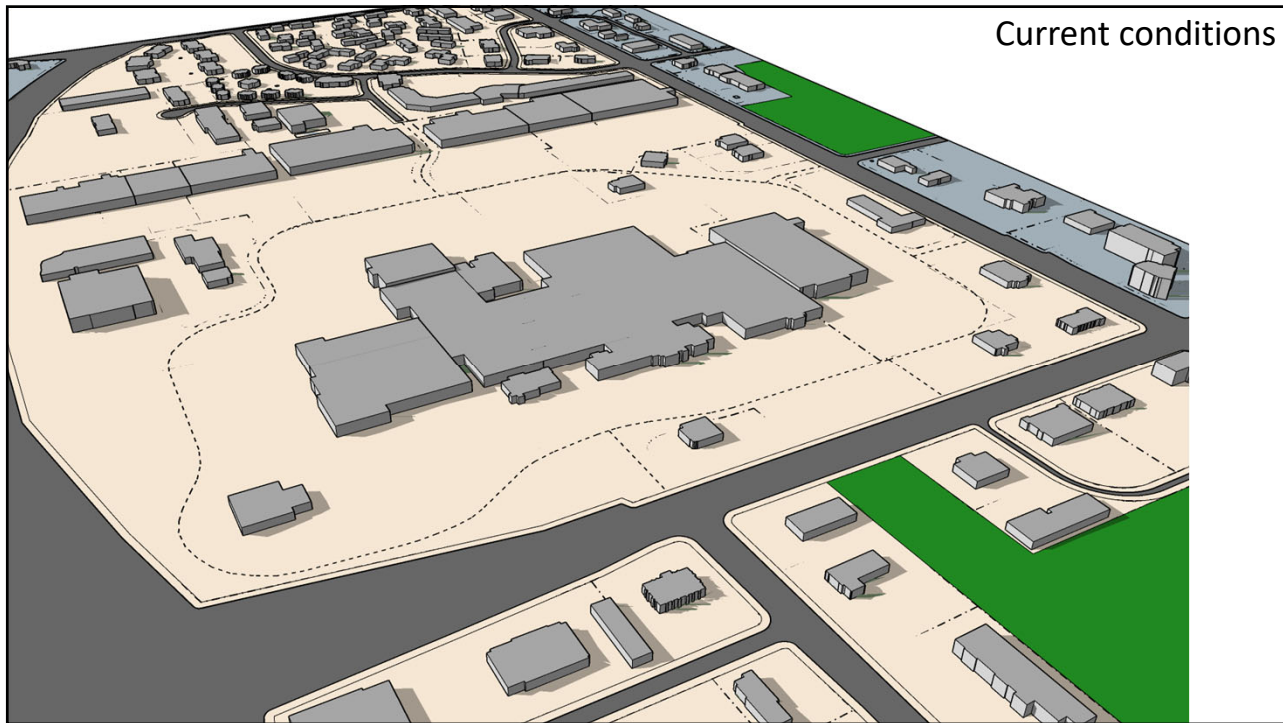
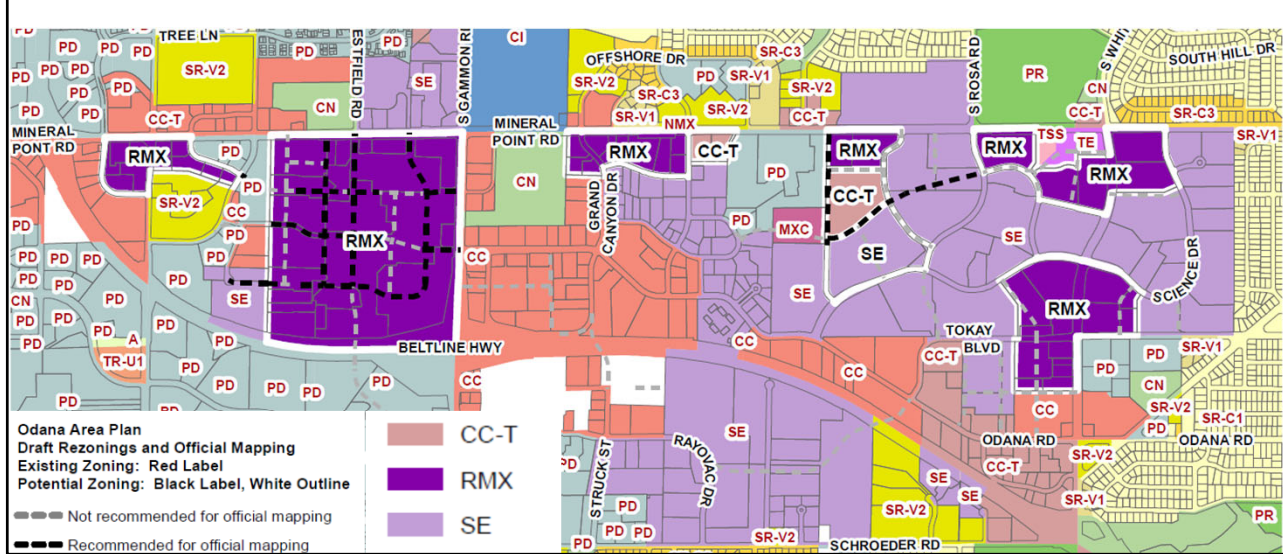
- Encourage redevelopment consistent with plan by simplifying development process
- Discourage development detrimental to character recommended by the plan

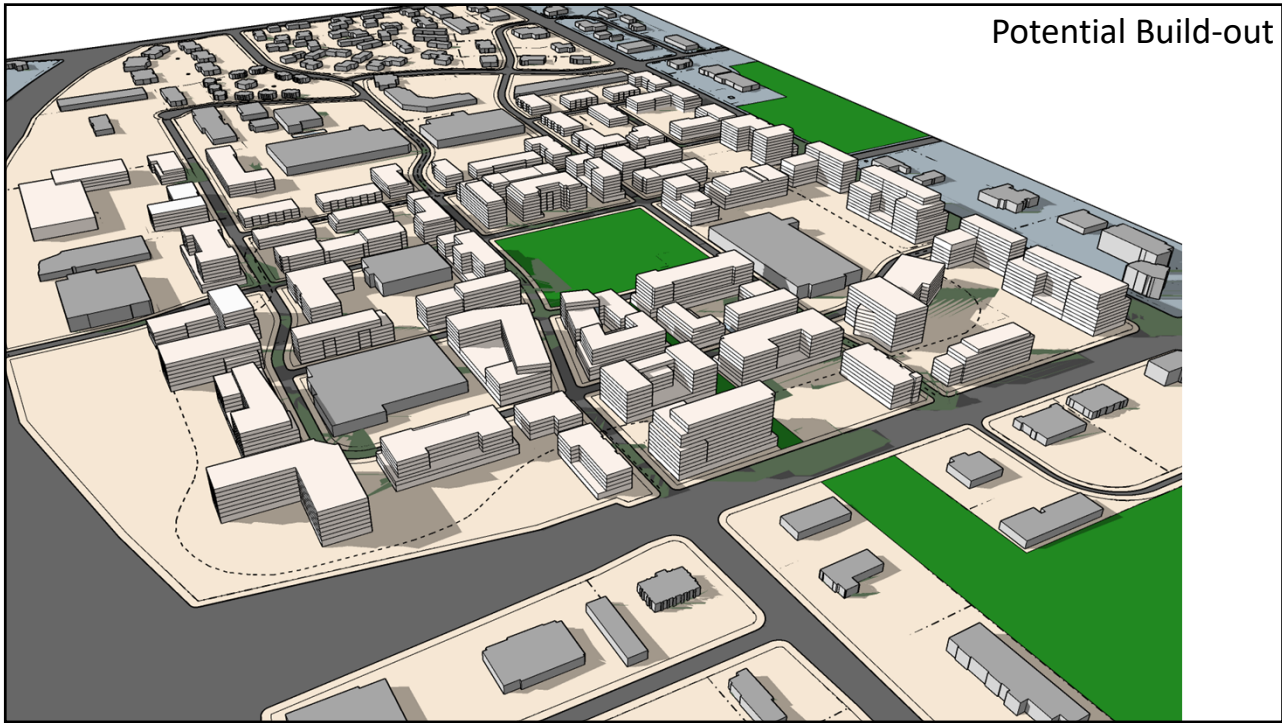
**What?**

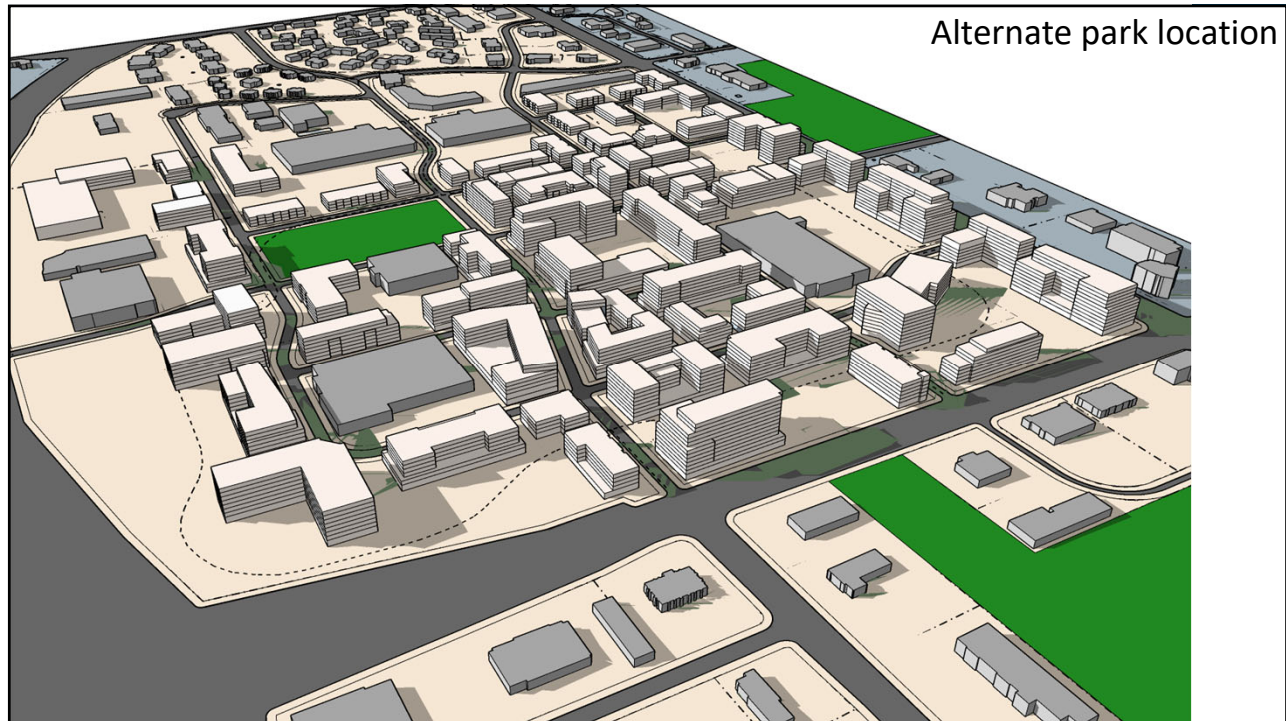
- Recommendation of potential future rezoning
- Plan approval will not change any zoning
  - Requires separate future approval

# Proactive Rezoning and Official Mapping







## Land Use & Transportation Recommendations



### Streets & Rights-of-Way

- Local Street network: implement network and officially map future streets as recommended
- Beltline crossings: work with WIDOT to improve connectivity across the Beltline via new streets and bicycle connections

### Transit

- BRT and Network redesign: implement, support and integrate improved transit in and around the Odana Area
- Bike-and-ride: Install appropriate facilities at the West Transfer Point and BRT stations.



## Land Use & Transportation Recommendations



### Bicycles & Pedestrians

- Bike network: implement network with shared use paths, wide sidewalks, bicycle lanes, etc.
- Pedestrian and bicycle infrastructure: include benches, pedestrian-oriented lighting, bike racks, etc., into terraces
- Implement bicycle wayfinding
- Pedestrian crossings: add crosswalks, islands, raised crossings, rectangular rapid flashing beacons (RRFBs), bumpouts, etc. to improve safety and comfort (see plan for example locations)

### Financing

- Use existing and potential future TIDs to fund BRT and other recommended transportation infrastructure improvements

## Referrals and Approval Schedule



Economic Development Committee: July 21

Board of Park Commissioners: August 11

**Transportation Policy and Planning Board: August 16**

Plan Commission (lead): August 23

Common Council: TBD (possibly September 21)