

University Research Park – Element Collective

Developer: University Research Park Inc.



ELEMENT DISTRICT

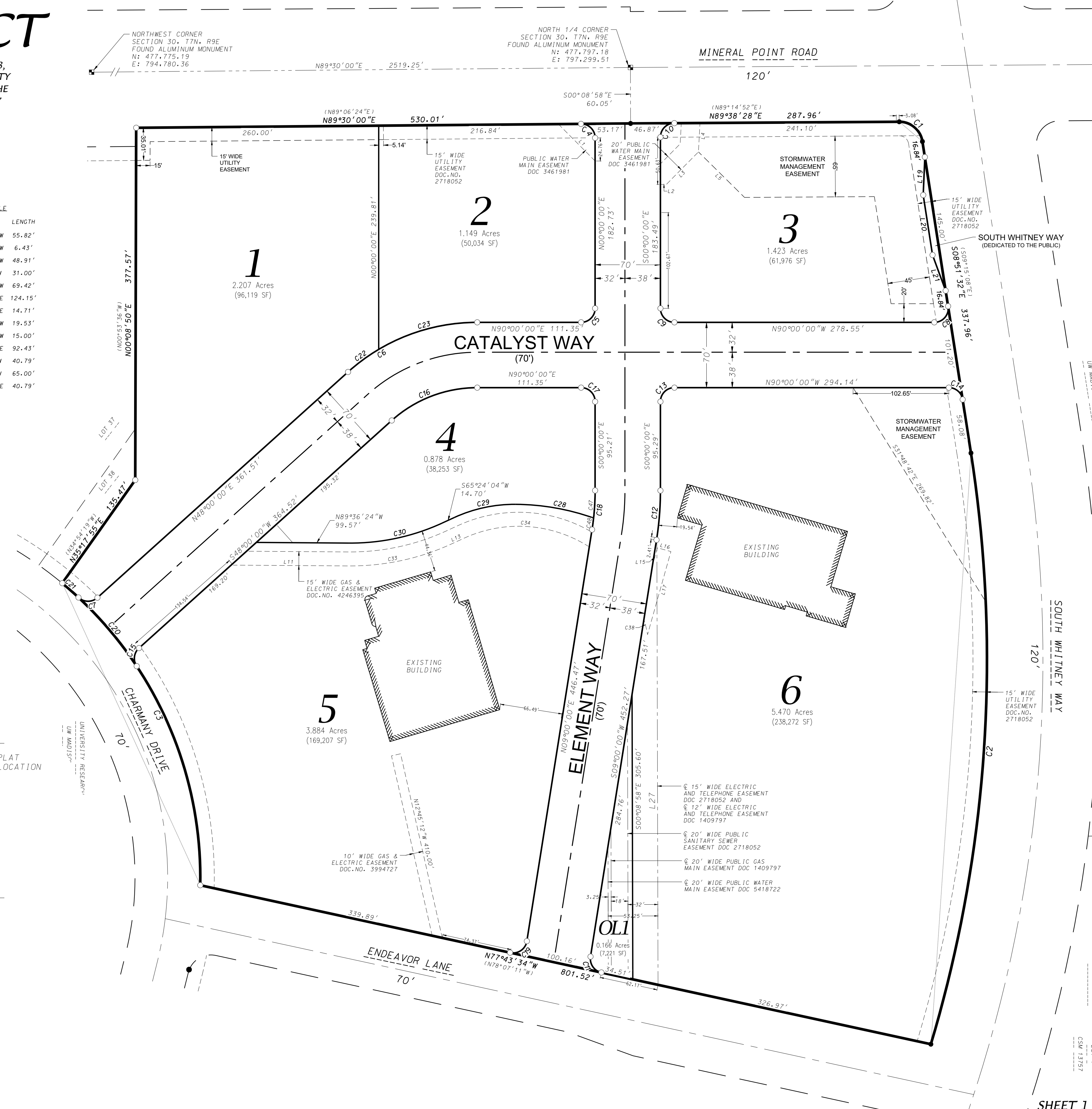
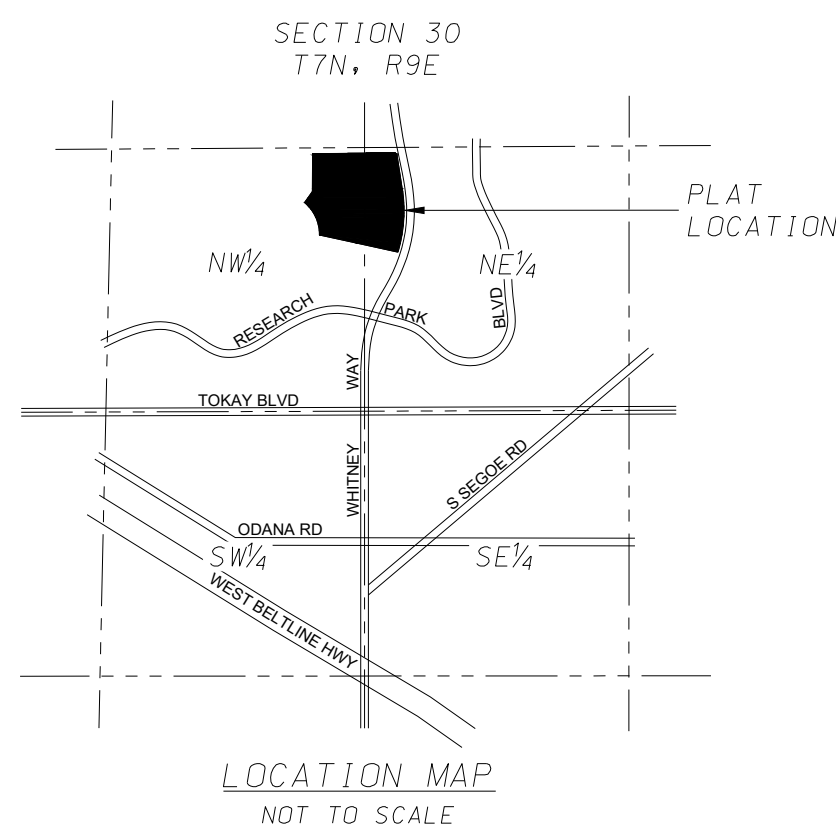
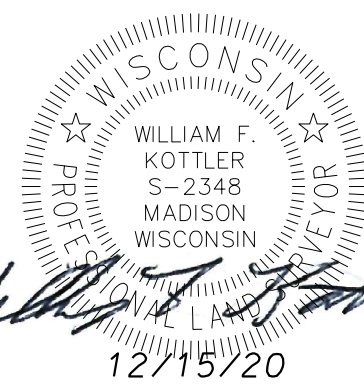
ALL OF LOT 1 CSM 10343, ALL OF LOT 2 CSM 10343, ALL OF LOT 3 CSM 10343, AND PARTS OF LOTS 38, 39, AND 40 OF UNIVERSITY RESEARCH PARK UNIVERSITY OF WISCONSIN-MADISON SECOND ADDITION, BEING PART OF THE NE1/4 OF THE NW1/4 AND PART OF THE NW1/4 OF THE NE1/4 OF SECTION 30, TOWNSHIP 7 NORTH, RANGE 9 EAST, CITY OF MADISON, DANE COUNTY, WISCONSIN.

CURVE TABLE						
CURVE NO.	ARC LENGTH	CURVE RADIUS	CENTRAL ANGLE	CHORD BEARING	CHORD LENGTH	TANGENT IN TANGENT OUT
C1	35.56'	25.00'	81°30'00"	N49°36'32"W	32.64'	N8°51'32"W S89°38'28"W
C2	640.35'	1440.00'	25°28'44"	N3°52'49"E	635.09'	N16°37'11"E N8°51'32"W
C3	368.20'	410.00'	51°27'14"	N24°33'24"W	355.95'	N1°10'12"E N50°17'01"W
C4	23.69'	15.00'	90°30'00"	N45°15'00"W	21.31'	N0°00'00"E S89°30'00"W
C5	23.56'	15.00'	90°00'00"	N45°00'00"E	21.21'	N90°00'00"E N0°00'00"E
C6	151.74'	207.00'	42°00'00"	N69°00'00"E	148.36'	N48°00'00"E N90°00'00"E
C7	22.24'	15.00'	84°57'37"	S89°31'11"E	20.26'	S47°02'23"E N48°00'00"E
C8	25.88'	15.00'	98°51'32"	N40°34'14"E	22.79'	N90°00'00"E N8°51'32"W
C9	23.56'	15.00'	90°00'00"	S45°00'00"E	21.21'	S0°00'00"E N90°00'00"E
C10	23.47'	15.00'	89°38'28"	S44°49'14"W	21.15'	S89°38'28"W S0°00'00"E
C11	22.70'	15.00'	86°43'34"	S34°21'48"E	20.60'	S8°59'59"W S77°43'34"E
C12	53.09'	338.00'	9°00'00"	S4°30'00"W	53.04'	S0°00'00"E S9°00'00"W
C13	23.56'	15.00'	90°00'00"	S45°00'00"W	21.21'	N90°00'00"W S0°00'00"E
C14	21.24'	15.00'	81°08'29"	N49°25'46"W	19.51'	N8°51'31"W N90°00'00"W
C15	21.34'	15.00'	81°31'15"	S71°14'22"W	19.59'	S48°00'00"W S33°31'15"E
C16	100.43'	137.00'	42°00'00"	S69°00'00"W	98.19'	N90°00'00"W S48°00'00"W
C17	23.56'	15.00'	90°00'00"	N45°00'00"W	21.21'	N0°00'00"E N90°00'00"W
C18	42.25'	269.00'	9°00'00"	N4°30'00"E	42.21'	N9°00'00"E N0°00'00"E
C19	24.42'	15.00'	93°16'26"	N55°38'13"E	21.81'	S77°43'34"E N9°00'00"E
C20	116.37'	410.00'	16°15'45"	N40°18'42"W	115.98'	N32°10'49"W N48°26'35"W
C21	13.17'	410.00'	1°50'28"	N49°21'49"W	13.17'	N48°26'35"W N50°17'03"W
C22	40.91'	207.00'	11°19'22"	S53°39'41"W	40.84'	S59°19'22"W S48°00'00"W
C23	110.83'	207.00'	30°40'38"	S74°39'41"W	109.51'	N90°00'00"W S59°19'22"W
C28	85.34'	255.00'	19°10'27"	N80°02'55"W	84.94'	N70°27'41"W N89°38'08"W
C29	67.53'	155.00'	24°59'32"	S77°52'58"W	67.00'	N89°38'08"W S65°24'04"W
C30	102.51'	235.00'	24°59'32"	N77°53'50"E	101.70'	S89°36'24"E N65°24'04"E
C33	113.19'	259.50'	24°59'32"	N77°53'50"E	112.30'	S89°36'24"E N65°24'04"E
C34	139.37'	140.21'	56°57'20"	S86°16'04"E	133.71'	N65°15'15"E S57°47'24"E
C38	16.81'	140.21'	6°52'12"	S13°19'21"E	16.80'	S16°45'26"E S9°53'15"E
C47	29.58'	269.00'	6°18'05"	N3°09'02"E	29.57'	N6°18'05"E N0°00'00"E
C48	12.67'	269.00'	2°41'55"	N7°39'02"E	12.67'	N9°00'00"E N6°18'05"E

LINE TABLE		
LINE#	DIRECTION	LENGTH
L1	N44°53'19"W	55.82'
L2	S89°38'28"W	6.43'
L3	S44°38'28"W	48.91'
L4	S3°01'03"W	31.00'
L5	N45°21'32"W	69.42'
L11	S89°36'24"E	124.15'
L13	N65°24'04"E	14.71'
L15	S15°42'31"W	19.53'
L16	N74°17'29"W	15.00'
L17	N15°42'31"E	92.43'
L19	S2°27'03"W	40.79'
L20	N8°51'32"W	65.00'
L21	S20°10'08"E	40.79'

LEGEND

- Found 1" Iron Pipe (unless noted)
- Found 3/4" Iron Rebar (unless noted)
- Placed 1-1/4" x 18" solid round iron rebar stake, weighing 4.30 lbs/ft. All other lot and outlot corners are marked with 3/4" x 18" solid round iron rebar stakes, weighing 1.50 lbs/ft.
- Public utility easement 16' wide unless otherwise dimensioned. Utility easements as herein set forth are for the use of PUBLIC BODIES and PRIVATE PUBLIC UTILITIES having the right to serve the area.
- () Recorded as information



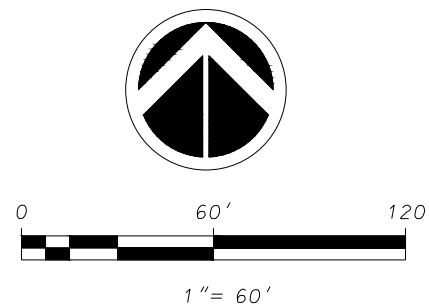
There are no objections to this plat with respect to Secs. 236.15, 236.16, 236.20 and 236.21(1) and (2), Wis. Stats. as provided by s. 236.12, Wis. Stats.

Certified _____, 20____
 Department of Administration

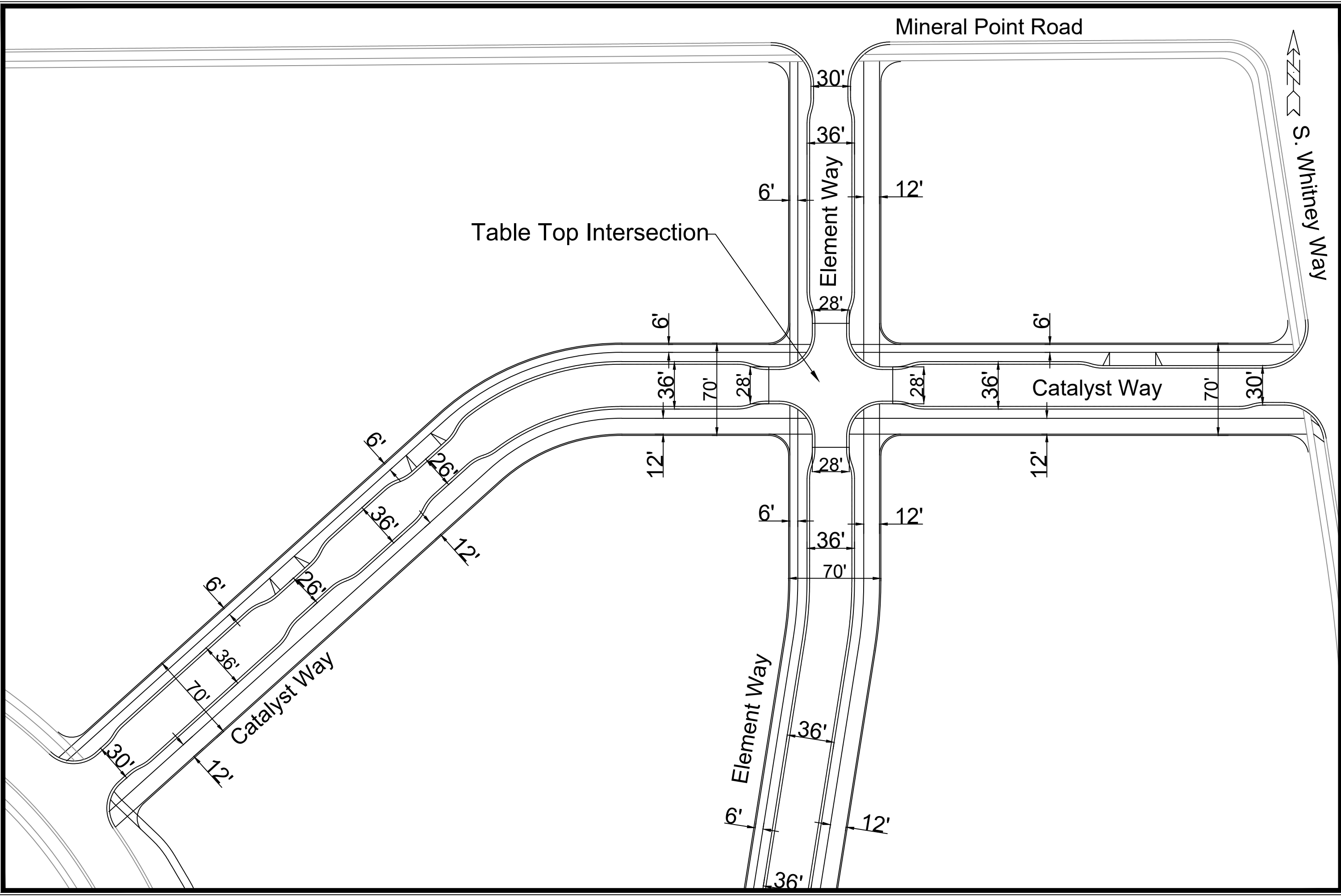
D'ONOFRIO KOTTKE AND ASSOCIATES, INC.

7530 Westward Way, Madison, WI 53717
 Phone: 608.833.7530 • Fax: 608.833.1089
 YOUR NATURAL RESOURCE FOR LAND DEVELOPMENT

FN:20-05-113



BEARINGS REFERENCED TO THE EAST LINE OF THE NORTHWEST QUARTER OF SECTION 30, T7N, R9E WISCONSIN COUNTY COORDINATE SYSTEM (DANE ZONE) BEARING 500°08'58"E

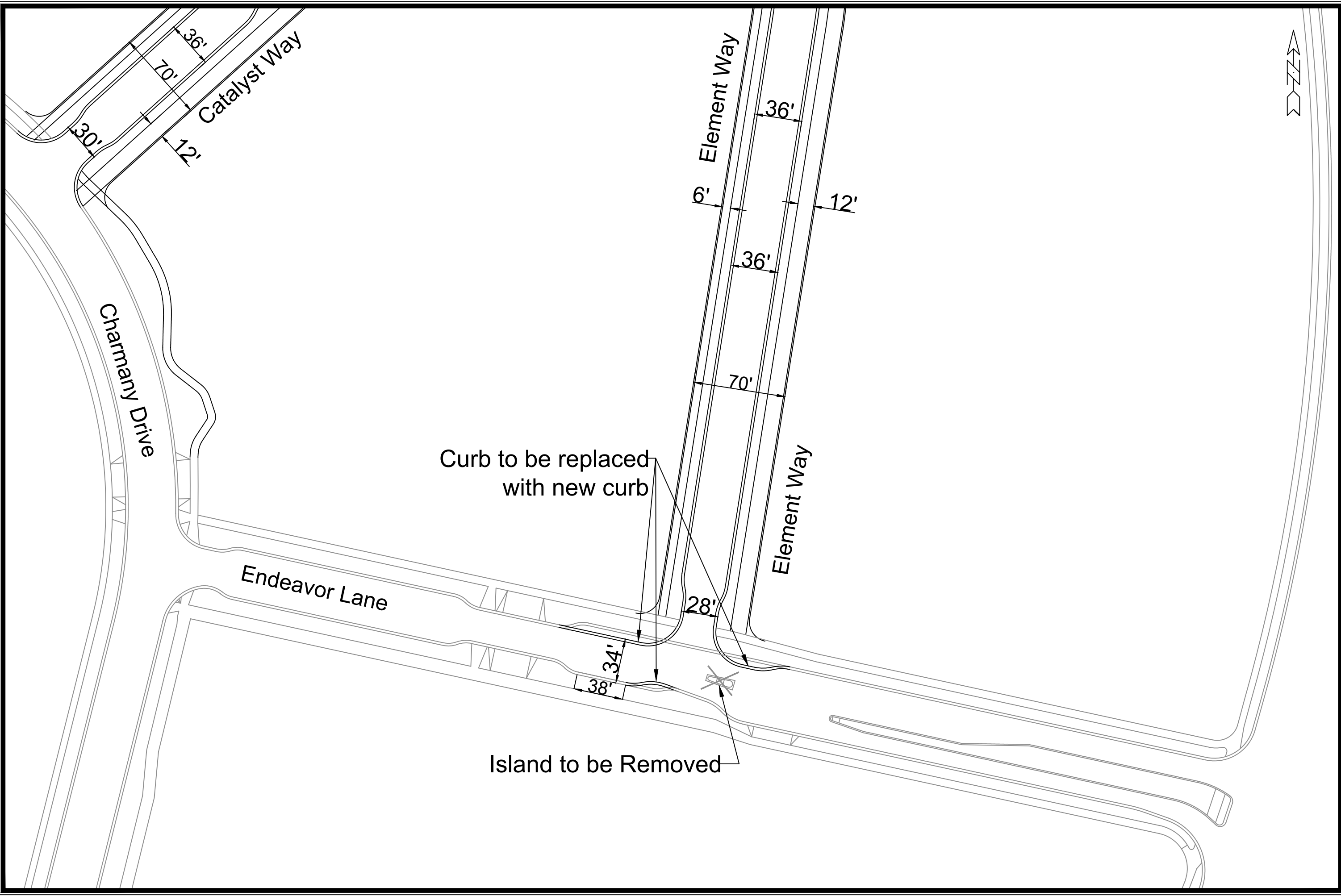


MARK	REVISION	DATE	BY

 MADISON, WI
 CONTRACT NO: -----

GEOMETRICS
 ELEMENT DEVELOPMENT
 M:\DESIGN\Traffic\Maps_Plans\DP-Maps\dp2021_Catalyst-Element_2.dwg





MARK	REVISION	DATE	BY

Designed By: SDM | Date: 5/20/2021 9:35 AM | Scale: 1:65

 GEOMETRICS
 ELEMENT DEVELOPMENT
 MADISON, WI
 CONTRACT NO: -----

M:\DESIGN\Traffic\Maps_Plans\DP-Maps\dp2021_Catalyst-Element_2.dwg

