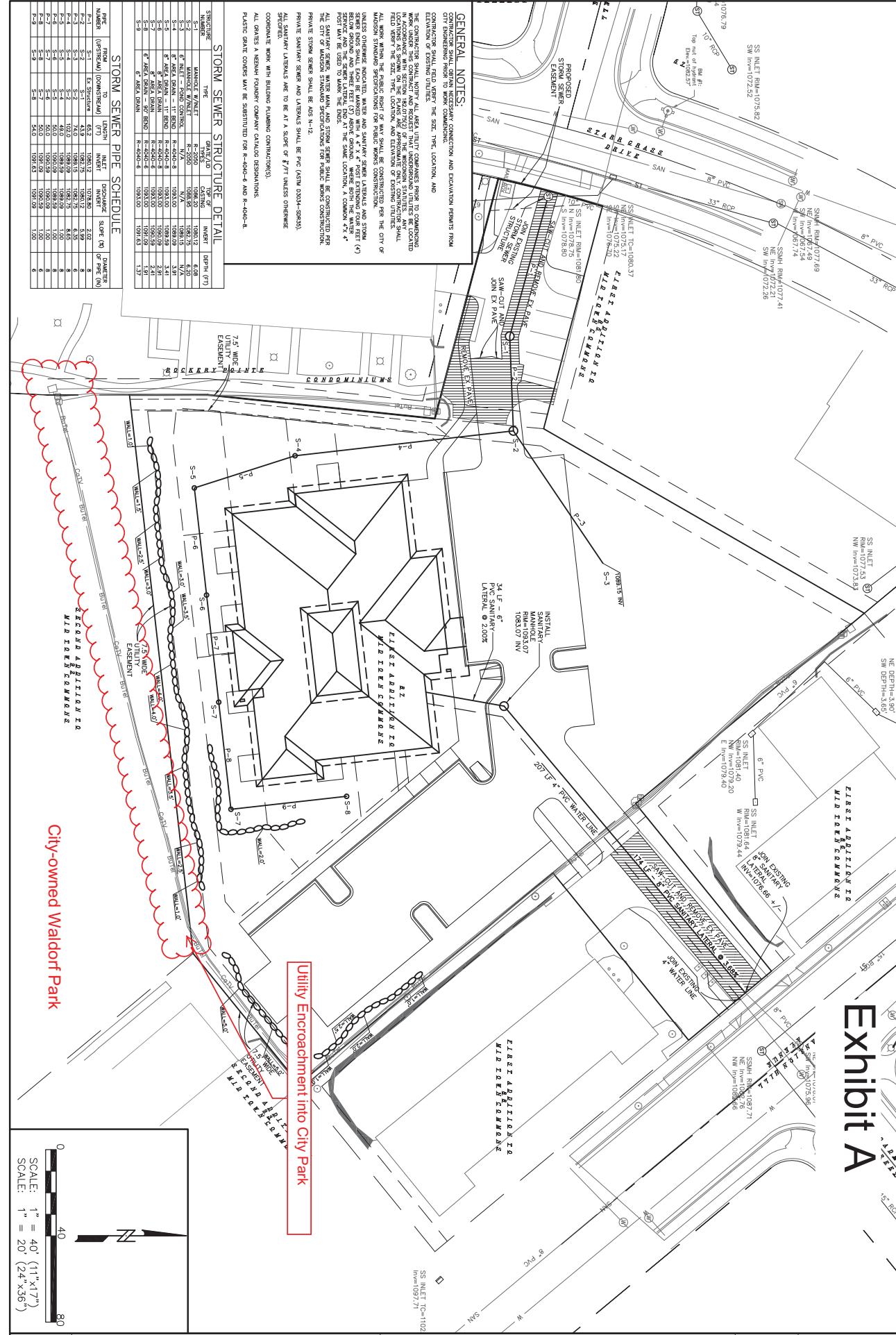


# Exhibit A



### GENERAL NOTES:

CONTRACTOR SHALL OBTAIN NECESSARY CONNECTION AND EXCAVATION PERMITS FROM THE CITY OF WASHINGTON PRIOR TO COMMENCING WORK. THE CONTRACTOR SHALL VERIFY THE SIZE, TYPE, LOCATION, AND ELEVATION OF EXISTING UTILITIES. THE CONTRACTOR SHALL NOTIFY ALL AFFECTED UTILITY COMPANIES PRIOR TO COMMENCING WORK. ALL WORK SHALL BE IN ACCORDANCE WITH SECTION 104.0202 OF THE WASHINGTON STATUTES. ANY FIELD VERIFY THE SIZE, TYPE, LOCATION, AND ELEVATION OF EXISTING UTILITIES. ALL WORK WITHIN THE PUBLIC RIGHT OF WAY SHALL BE CONDUCTED PER THE CITY OF WASHINGTON STANDARD SPECIFICATIONS FOR PUBLIC WORKS CONSTRUCTION. ALL NEW SANITARY SEWER, WATER MAIN, AND STORM SEWER SHALL BE CONSTRUCTED PER SECTION 104.0202 OF THE WASHINGTON STATUTES. ALL NEW SANITARY SEWER SHALL BE MANHOLE WITH A 4' x 4' FIRST EXTENDING FROM FEET (4') FROM EACH END. ALL NEW WATER MAIN SHALL BE 12\"/>

### STORM SEWER STRUCTURE DETAIL

STRUCTURE NUMBER	TYPE	DEPTH (FT)	DIAMETER (IN)	INVERT ELEVATION (FT)	OUTLET ELEVATION (FT)	DEPTH (FT)
S-1	MANHOLE	8.00	36"	108.75	108.75	8.00
S-2	MANHOLE	8.00	36"	108.75	108.75	8.00
S-3	MANHOLE	8.00	36"	108.75	108.75	8.00
S-4	MANHOLE	8.00	36"	108.75	108.75	8.00
S-5	MANHOLE	8.00	36"	108.75	108.75	8.00
S-6	MANHOLE	8.00	36"	108.75	108.75	8.00
S-7	MANHOLE	8.00	36"	108.75	108.75	8.00
S-8	MANHOLE	8.00	36"	108.75	108.75	8.00
S-9	MANHOLE	8.00	36"	108.75	108.75	8.00

### STORM SEWER PIPE SCHEDULE

PIPE SIZE (IN)	LENGTH (FT)	DISCHARGE SLOPE (%)	QUANTITY
36"	108.75	0.20	8
36"	108.75	0.20	8
36"	108.75	0.20	8
36"	108.75	0.20	8
36"	108.75	0.20	8
36"	108.75	0.20	8
36"	108.75	0.20	8
36"	108.75	0.20	8
36"	108.75	0.20	8
36"	108.75	0.20	8

