



KEN SAIKI
DESIGN INC

LANDSCAPE
ARCHITECTS

303 South Paterson, Suite One
Madison, Wisconsin 53703

Voice: 608-251-3600
Fax: 608-251-2330
Email: your_name@ksd-la.com
Web: www.ksd-la.com

To: Urban Design Commission Members

Project Name: Lisa Link Peace Park

From: Mike Sturm, Ken Saiki Design, Inc.

Date: 05/26/09

Project Introduction:

In 2001, the Lisa Link Peace Park Advisory Committee formed to provide recommendations to the City of Madison for improvements to Lisa Link Peace Park. The commission was comprised of various stakeholders from the community who convened twice a month for approximately two years. The commission met with an urban park specialist, researched urban park design principles, observed existing park uses, and discussed on-going park issues. The group was dedicated to providing consensus-based recommendations and submitted a final report and concept plan to the Common Council, which was approved in 2003. Key features of the concept plan include a visitor center, public restrooms, an interactive fountain, a performance stage with amphitheater seating, game tables, a secured storage area and space for outdoor seating with tables and chairs.

The City of Madison is now ready to implement the plan and the project is entering design development. Preliminary visitor center and park plans have been developed through programming sessions with representatives from the Parks Department, Downtown Madison Inc, Madison Business Improvement District and Madison Police Department. Presentations to a variety of city committees are scheduled for the month of June. The Urban Design Commission (UDC) is first. The presentation is for informational purposes, with the project returning to the UDC after the June meeting schedule.

We look forward to your review and discussion.

Thank you,

Mike Sturm

303 S. PATERSON
SUITE ONE
MADISON, WI 53703
Phone: 608 251-3600
Fax: 608 251-2330
info@ksd-la.com
www.ksd-la.com

Lisa Link Peace Park

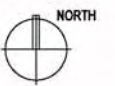
Madison, WI

Urban Design Commission
Informational Presentation

06.03.09



Lisa Link Peace Park
Site Location Plan
Madison, WI



NORTH

NTS

KSD Project No. 2007-058
Date 05-27-2009



Lisa Link Peace Park
Proposed Site Plan
 Madison, WI

State Street

KEN SAIKI
 DESIGN INC
 LANDSCAPE ARCHITECTS
 303 S. PATERSON SUITE ONE MADISON, WI 53703
 Phone: 608 251-3600
 Fax: 608 251-8330
 www.ksd-la.com

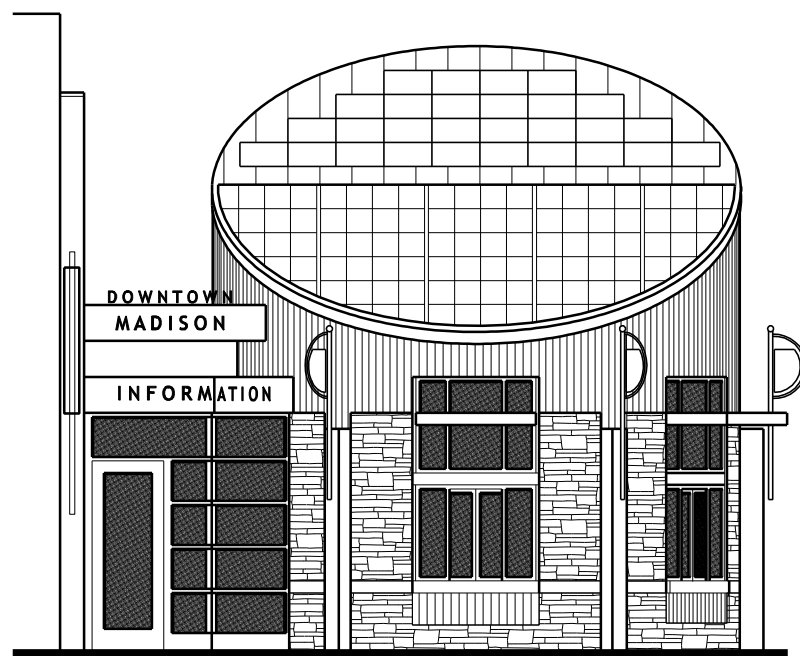
NORTH

0' 5' 10' 20'

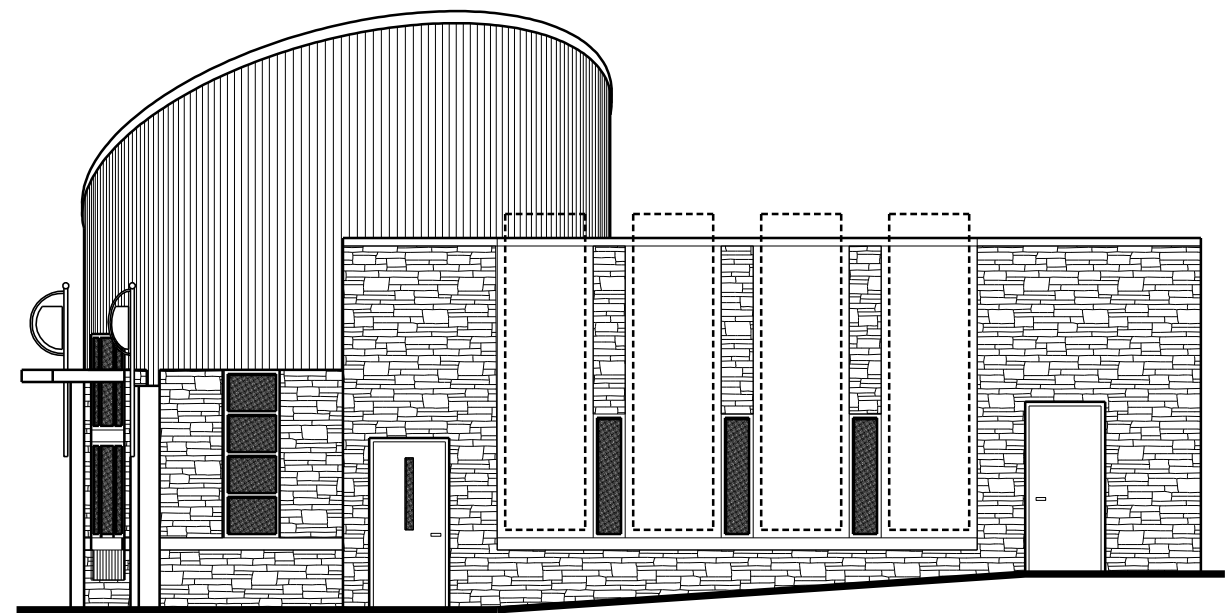
Scale 1"=10' at 24x36"

KSD Project No. 2007-056
 Date 05-27-2009

PRELIMINARY
NOT FOR CONSTRUCTION



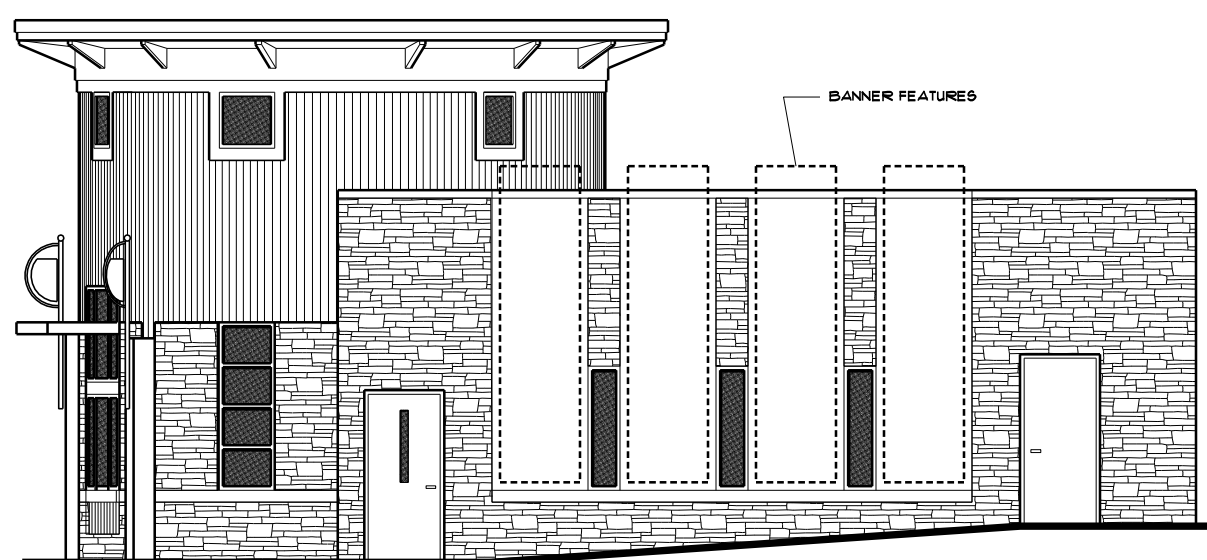
CONCEPTUAL STATE STREET (S) ELEVATION
1/4" = 1'-0" (22x34)
1/8" = 1'-0" (11x17) **CONCEPT A**



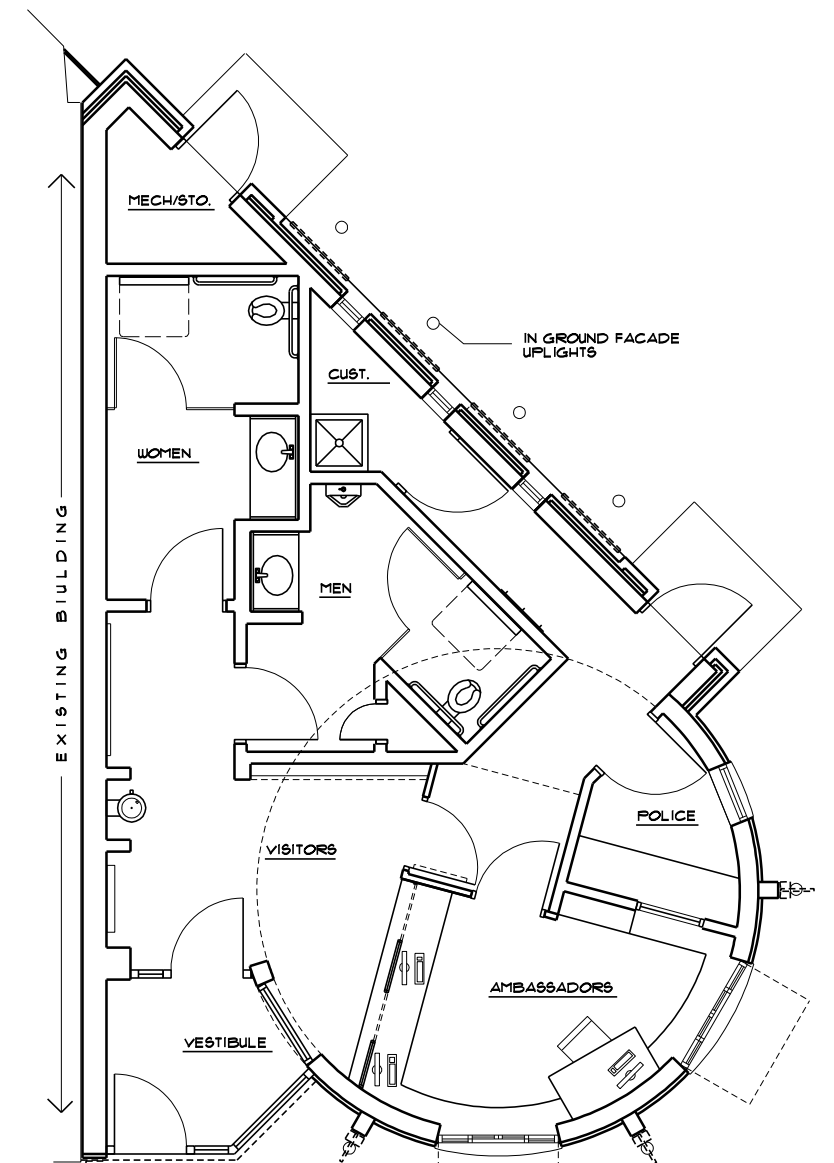
CONCEPTUAL PEACE PARK (NE) ELEVATION
1/4" = 1'-0" (22x34)
1/8" = 1'-0" (11x17) **CONCEPT A**



CONCEPTUAL STATE STREET (S) ELEVATION
1/4" = 1'-0" (22x34)
1/8" = 1'-0" (11x17) **CONCEPT B**



CONCEPTUAL PEACE PARK (NE) ELEVATION
1/4" = 1'-0" (22x34)
1/8" = 1'-0" (11x17) **CONCEPT B**



STATE STREET
CONCEPTUAL FLOOR PLAN
1/4" = 1'-0" (22x34)
1/8" = 1'-0" (11x17) **892 SQUARE FEET**

TRANSPORTATION • MUNICIPAL DEVELOPMENT • ENVIRONMENTAL 1230 South Boulevard, Baraboo, WI 53913 608-356-2771, 1-800-362-4505 Fax: 608-356-2770 Web Address: www.msa-pe.com © 2009 Professional Services	
MSA PROFESSIONAL SERVICES	
BY	REVISION
DATE	NO.
PROJECT NO: 4414001	DATE: MAY 19, 2009
SCALE: AS SHOWN	SCALE: AS SHOWN
FLOOR PLAN AND ELEVATIONS	FLOOR PLAN AND ELEVATIONS
INFORMATION CENTER	INFORMATION CENTER
LISA LINK PEACE PARK - CITY OF MADISON	LISA LINK PEACE PARK - CITY OF MADISON
STATE STREET	STATE STREET
FILE NO. 4414001	SHEET A10