



# Public Involvement Meeting #1

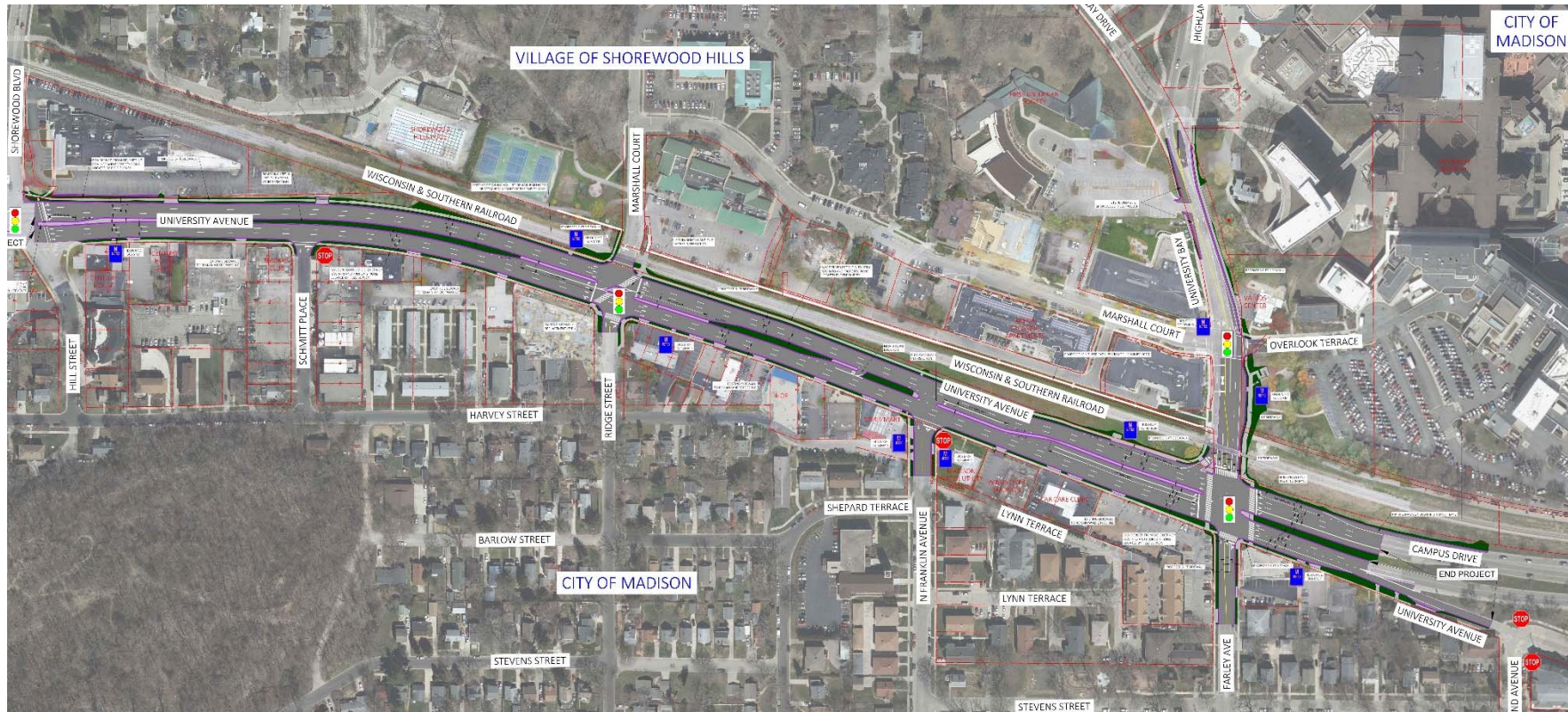
## University Avenue

(Shorewood Blvd – University Bay Dr)





# Project Overview



# Project Needs

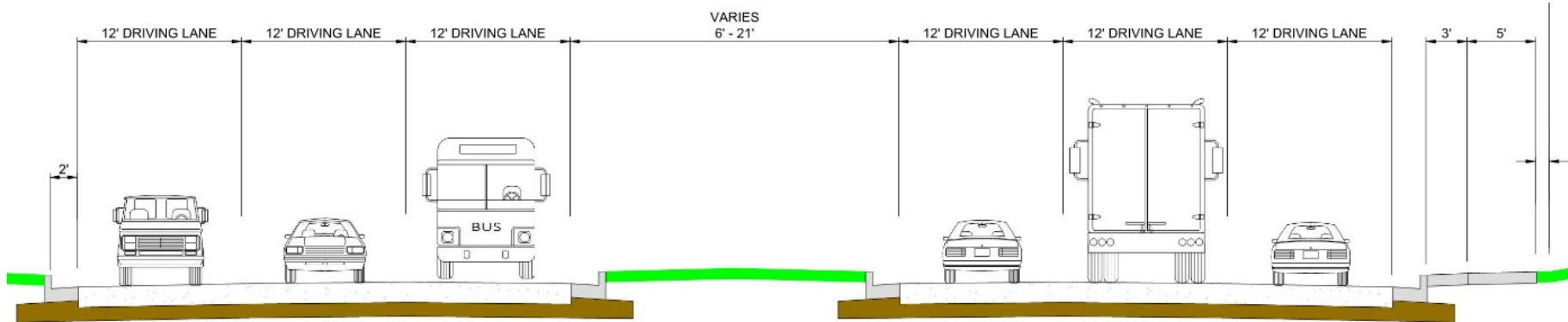


- Poor Pavement Condition
- Substandard Roadway Geometrics
- Lack of Bicycle Accommodations
- Absence of Pedestrian Facilities
- Safety and Operations inefficiencies at Intersections
- Pedestrian/Bicycle Crossing on University Bay Drive of Campus Drive Bike Path
- Insufficient stormwater drainage collection and conveyance



# University Ave. – Typical Section

## Existing Typical Section



- 3-12' Driving Lanes in Each Direction
- Sidewalk only on south side
- 52,000 vehicles per day

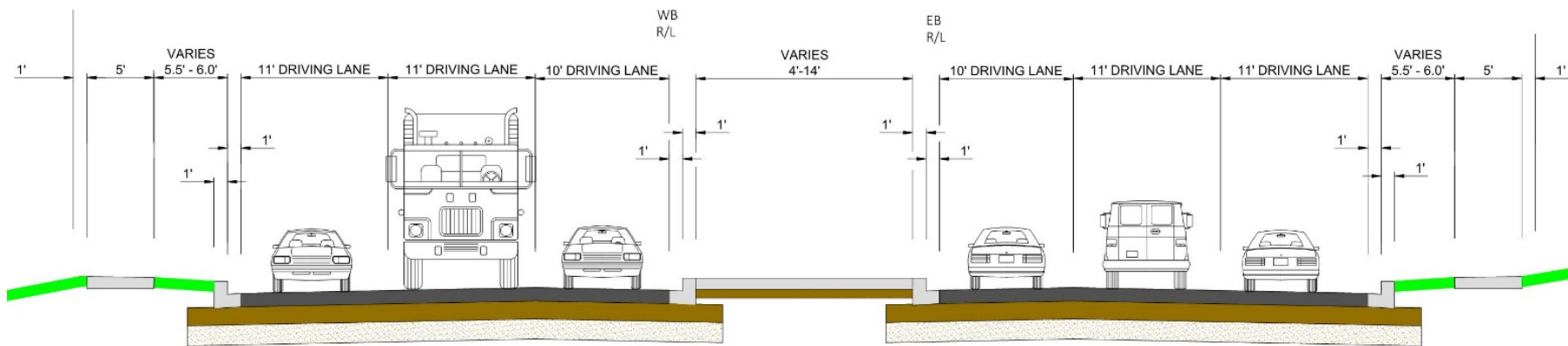
# University Ave. – Typical Section

## Proposed – Alternative Considerations

- 105-ft to 106-ft Right of Way Width
- Maintain 6 Traffic Lanes, Median & Left Turn Lanes
- Bicycle Lanes
- New Sidewalk on North Side
- Multi-use Path
- Future Bus Rapid Transit Route
- National Highway System
- Enhance user experience

# University Ave. – Typical Section

Proposed (Current 30% Design)



- 2 – 11' & 1 – 10' Driving Lanes in Each Direction
- New Sidewalk on North Side
- Wider Terraces

# Proposed Improvements



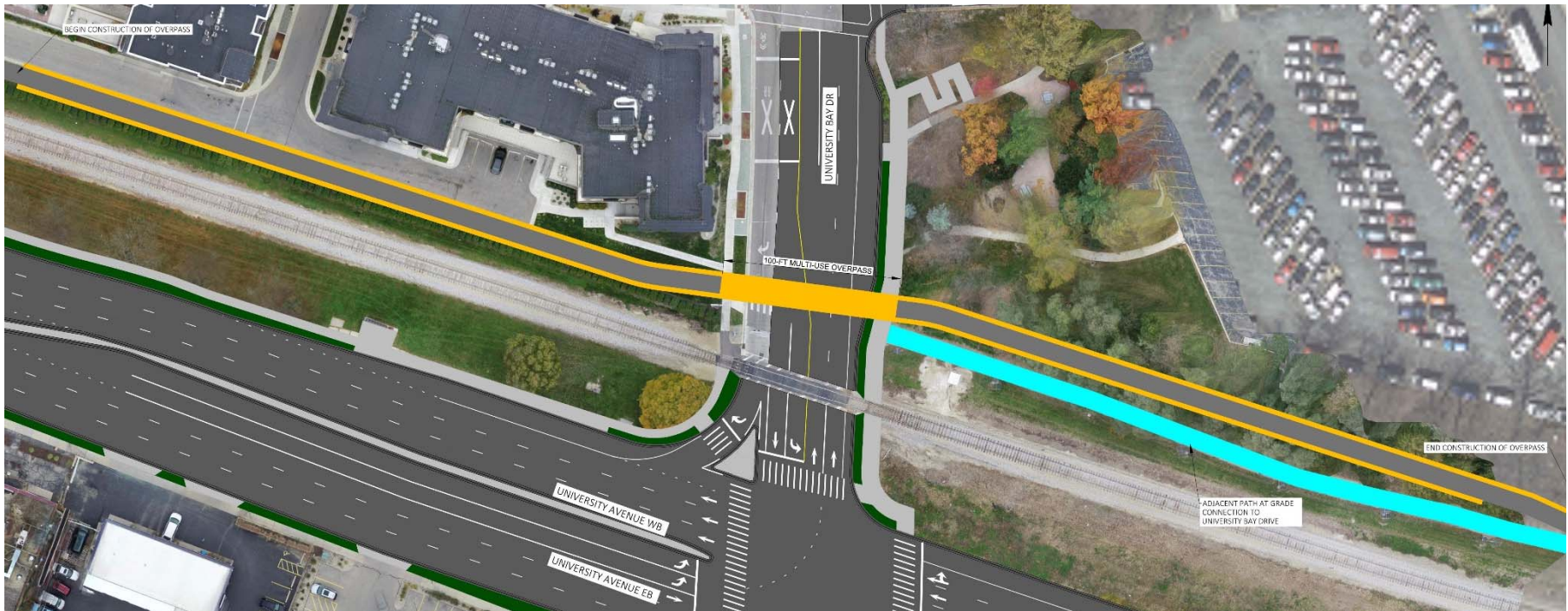
## Village of Shorewood Hills Multi-use Path Project

- Path Connection Between Marshall Court and University Bay Dr.
- At-grade Crossing of University Bay Drive
- Construction Scheduled for Summer 2019



# Proposed Improvements

University Bay Drive – Possible Grade Separated Overpass Bike/Ped Crossing





# Metro Transit

## Bus Accommodations

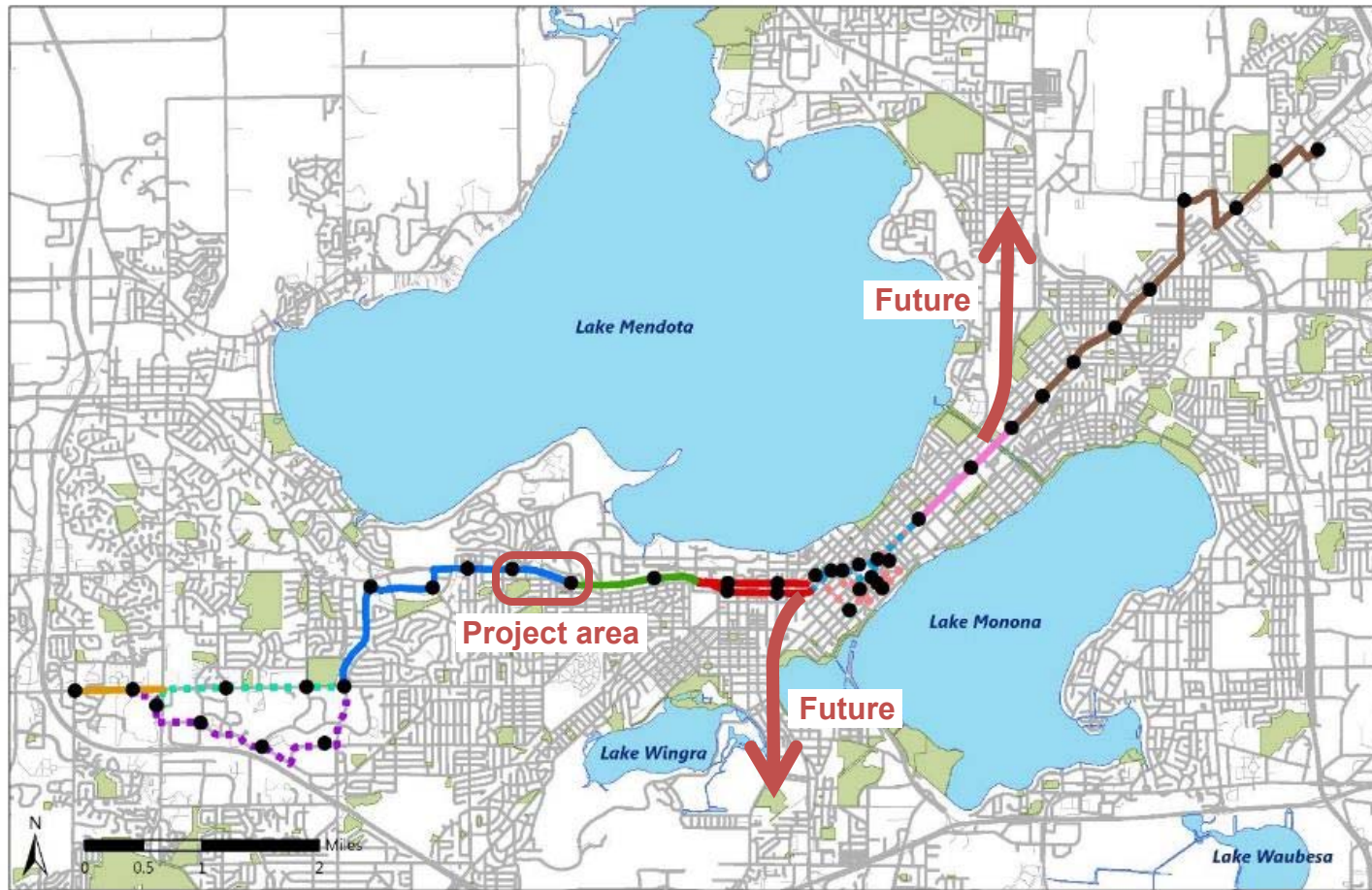
- Bus Stop Pull outs
  - EB University Ave. after Farley Ave.
  - University Bay Drive NB after railroad tracks
- Bus Stops moved to far side
  - WB University Ave. after Marshall Court
  - EB University Ave. after Hill Street
- Bus Stops to remain in place
  - WB University Ave. Pull out after University Bay Dr.
  - EB University Ave. after Ridge Street
  - N. Franklin Ave

# Madison Bus Rapid Transit (BRT)

- University Ave. is part of the first planned route between East Towne and West Towne
  - Planned stations at University Bay Drive and Shorewood Boulevard
- Operate in mixed traffic with limited stops, signal priority, and off-board fare collection
- Westbound bypass lane queue skip at University Bay
- Project will accommodate future shoulder running on Campus Drive for BRT buses when traffic is heavy
- Coordination with BRT Study Team is ongoing



# Madison Bus Rapid Transit (BRT)





# University Avenue Watershed

## University Avenue Watershed

- Update existing local storm sewer structures and inlets
- Conducting feasibility study on large diameter storm pipes/tunnel options
  - Feasibility study to be completed in July; design alternatives will be evaluated
- Willow Creek Watershed Study in the City of Madison will kick off July/August 2019
  - Completed Concurrently with University Avenue design



# Project Schedule

## Spring – Fall 2019

- Complete University Bay Dr. Underpass/Overpass Feasibility Study
- Environmental Document
- Preliminary Plans
- Right of Way Plat
- 2<sup>nd</sup> Public Involvement Meeting

## Winter 2019/2020 – Summer 2020


- Final Plans
- Purchase Right of way
- 3<sup>rd</sup> Public Involvement Meeting

## Spring 2021 – Fall 2021

- Construction

# Project Website & Notifications

## University Avenue



**Project Details**

- Project Type: [Road Construction](#)
- Location(s):
  - 2737 University Avenue
  - Madison, WI 53705
- Area: West
- Aldermanic District(s): [District 5](#)
- Estimated Schedule: 04/01/2021 to 11/01/2021
- Project Status: In Design

**Project Contact:**

Glen Yoerger  
(608) 261-9177  
[gyoerger@cityofmadison.com](mailto:gyoerger@cityofmadison.com)

[Active Project List](#)

**Subscribe to Email List:**

**Project Details**  
University Ave is scheduled for reconstruction from Shorewood Boulevard/Hill St to University Bay Drive/Farley Ave. A map of the project limits can be found here: [Project Limits PDF](#)

The City of Madison is jointly participating with the Village of Shorewood Hills on the design and construction. The project includes reconstruction of pavement, curb & gutter, sidewalk as necessary, street lighting, traffic signals, water main, sanitary sewer and storm sewer. Design alternatives will include analysis to try and improve pedestrian & bicycle connectivity, bus rapid transit initiatives and stormwater drainage.

**Schedule**  
Construction is scheduled for 2021

**Public Meetings**  
The City of Madison and Village of Shorewood Hills will host a Public Involvement Meeting regarding the project on June 13th at 6:00 pm at the UW Credit Union Corporate Headquarters, 3500 University Avenue. The meeting will be an open house format with a formal presentation beginning at 6:30 pm. The public is encouraged to attend the meeting and offer ideas and comments on the design concepts for the project.

<https://www.cityofmadison.com/engineering/projects/university-avenue>

<https://www.facebook.com/CityOfMadisonEngineering/>

Please Complete and Return Comment Forms by July 3, 2019





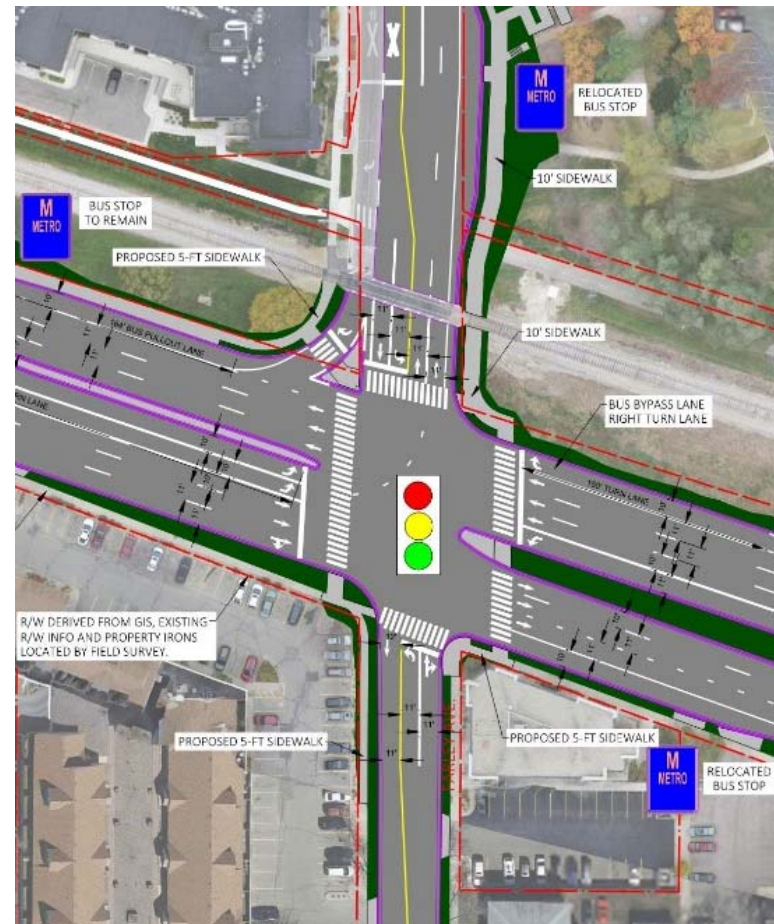
# Comments at PIM

- Pedestrian/Bike Crossings
- Bicycle Facilities on South Side
- Schmitt Place median opening
- Overpass N-S connections



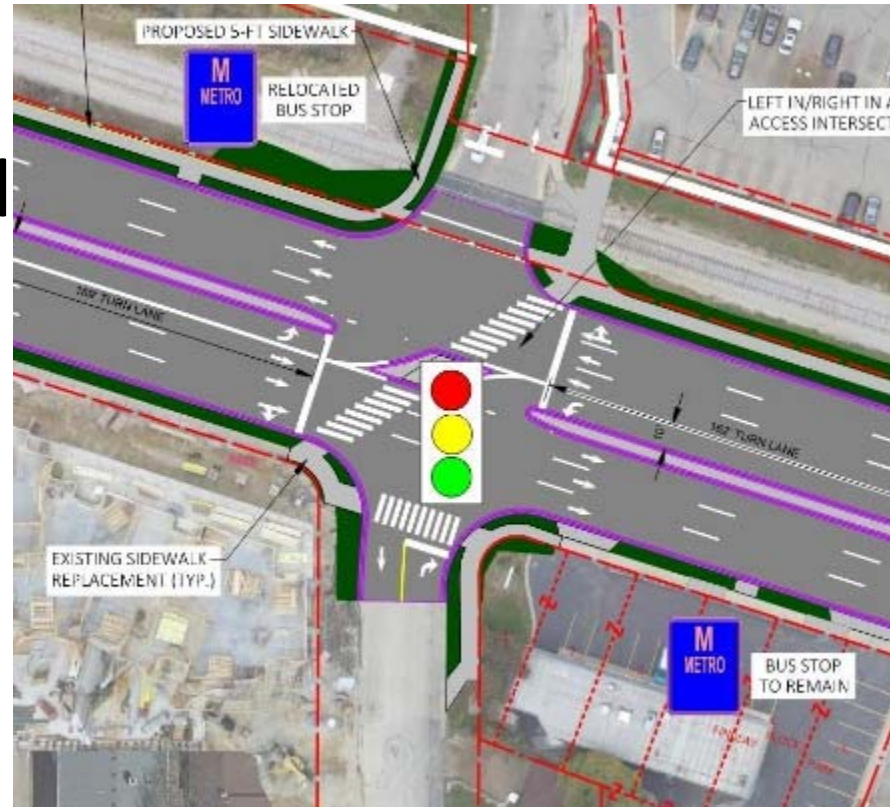
# Pedestrian/Bike Crossing

- Continental Crossings
- Pedestrian leading signal
- Provide for E side priority with new bus stops & sidewalk
- N-S Bridge or Tunnel conflict



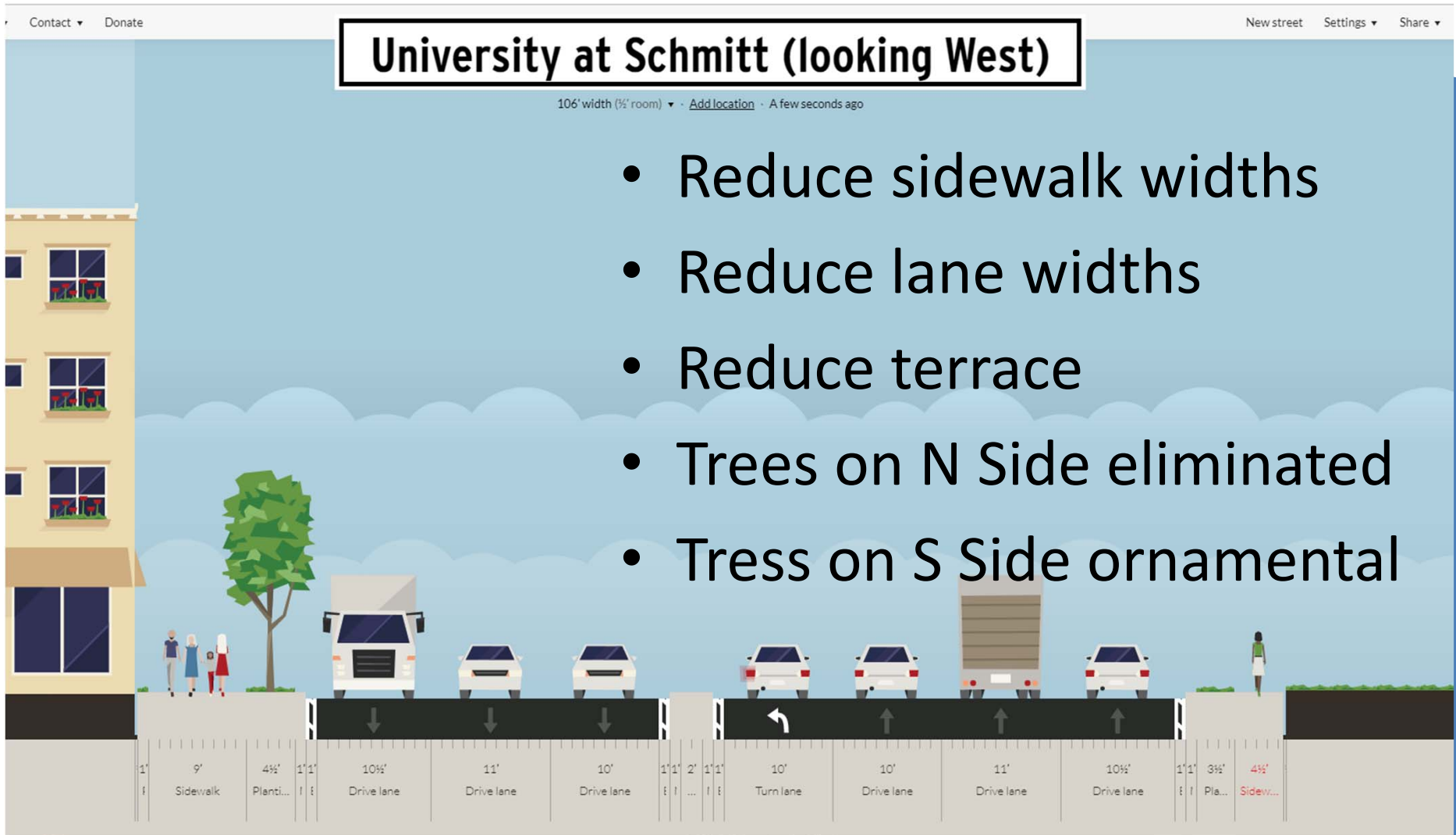
# Pedestrian/Bike Crossing

- Widen Crossings
- N-S Bridge or Tunnel conflict





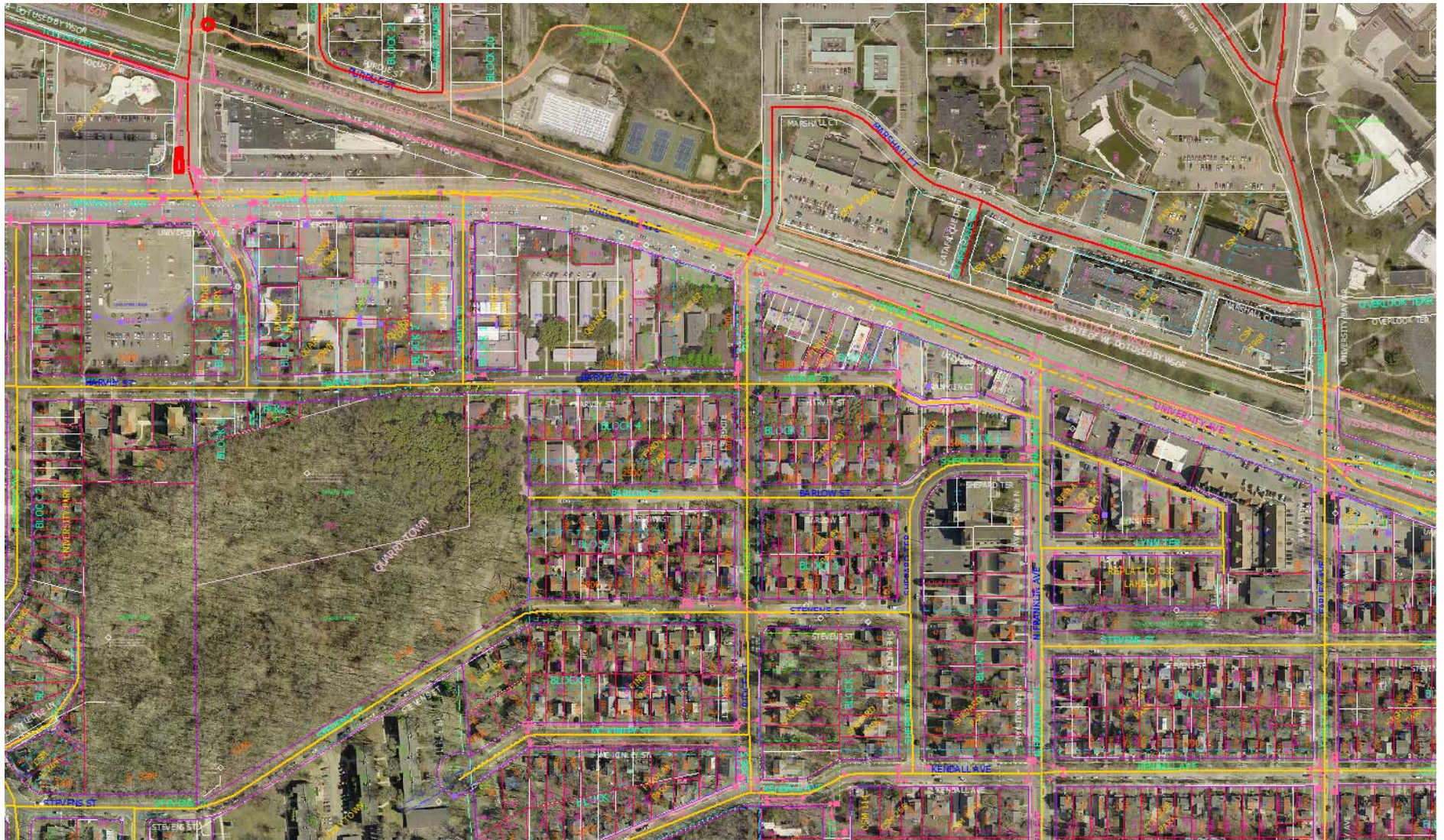
# Bikes on South Side





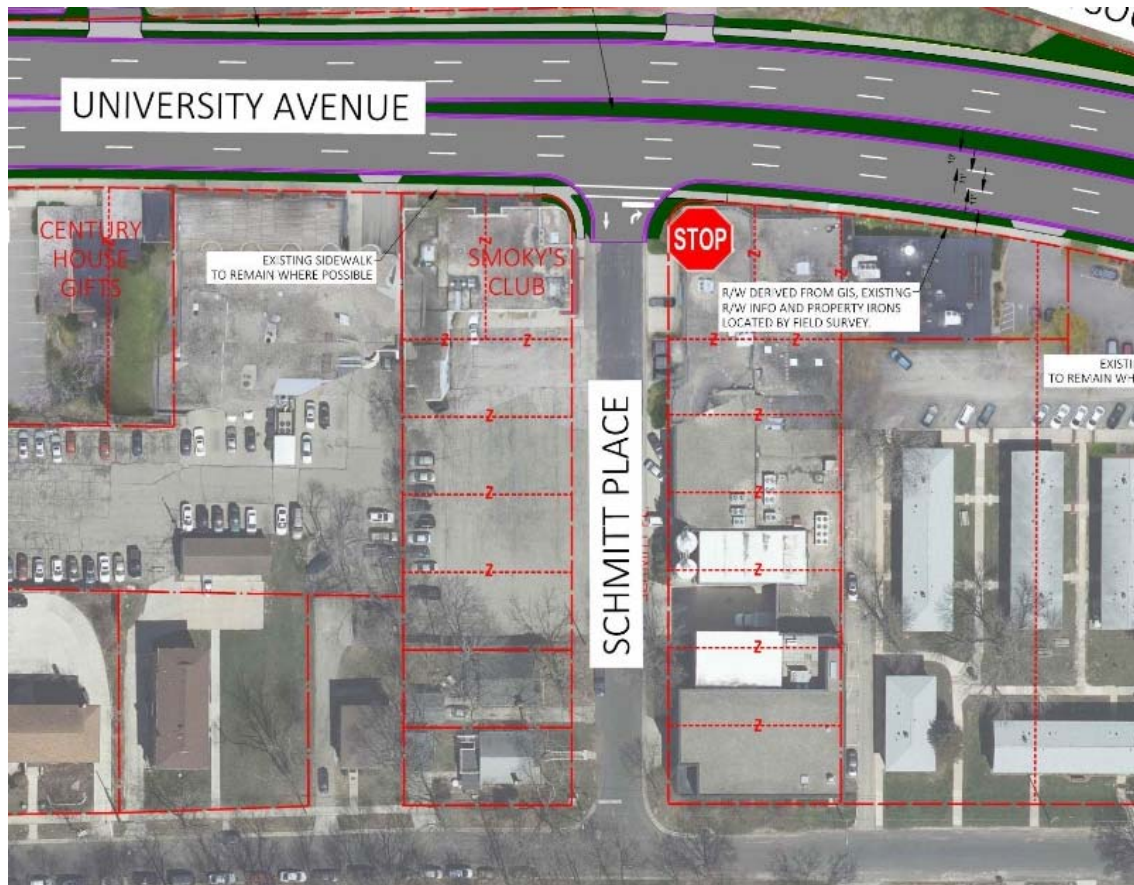
# Bikes on South Side

- Focus on next block streets





# Schmitt Place



## Schmitt PI – Draft

- Narrow Exist Median
- R/W Pinch Point
- Poor Sight Distance
- Close Median
- Left Turn In and Out are prohibited

# Overpass

- N-S connection

