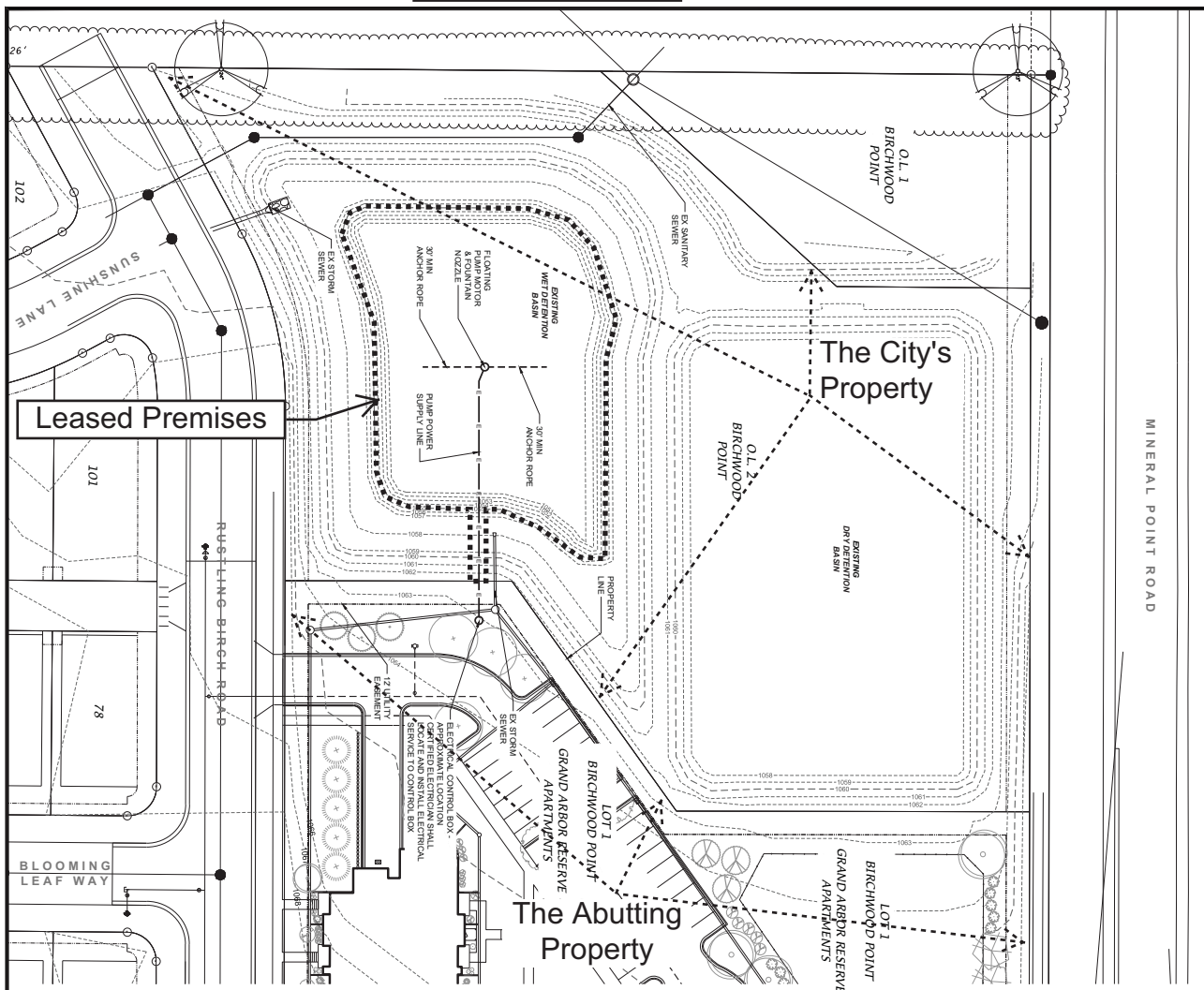


EXHIBIT C



POND FOUNTAIN PLAN - GENERAL NOTES

1. CONTRACTOR SHALL VERIFY THE LOCATION OF ALL THE PRIVATE UTILITIES PRIOR TO THE START OF CONSTRUCTION.
2. CONTRACTOR SHALL VERIFY THE LOCATION OF ALL THE PRIVATE UTILITIES PRIOR TO THE START OF CONSTRUCTION.
3. ALL ELECTRICAL CONNECTIONS SHALL BE COMPLETED BY A CERTIFIED ELECTRICIAN.
4. ALL ELECTRICAL CONNECTIONS SHALL BE COMPLETED BY A CERTIFIED ELECTRICIAN.
5. ALL ELECTRICAL CONNECTIONS SHALL BE COMPLETED BY A CERTIFIED ELECTRICIAN.

PUMP INFORMATION

Kaseco 5.1HP Venturing Fountain
 Model: 5.1HP
 Dimensions: 31" x 18" x 18"
 Weight: 15 lbs
 Flow: 1.5 GPM
 Voltage: 115V
 Amps: 1.5A

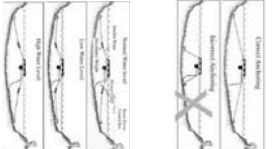
Model	Flow (GPM)	Height (ft)	Weight (lbs)	Voltage (V)	Amps (A)
5.1HP	1.5	18	15	115	1.5
7.5HP	2.5	24	25	115	2.5
10HP	3.5	30	35	115	3.5
15HP	5.0	36	45	115	5.0
20HP	6.5	42	55	115	6.5
25HP	8.0	48	65	115	8.0
30HP	9.5	54	75	115	9.5
35HP	11.0	60	85	115	11.0
40HP	12.5	66	95	115	12.5
45HP	14.0	72	105	115	14.0
50HP	15.5	78	115	115	15.5

GENERAL PUMP INSTALLATION INFORMATION

STEP ONE: USE THE ROPES TO POSITION THE UNIT IN THE DESIRED LOCATION. PREVENT THE UNIT FROM SLIDING OR TIPPING. THE ROPES SHOULD BE TIGHTENED TO THE POINT WHERE THE UNIT IS SECURE. THE ROPES SHOULD BE TIGHTENED TO THE POINT WHERE THE UNIT IS SECURE. THE ROPES SHOULD BE TIGHTENED TO THE POINT WHERE THE UNIT IS SECURE.

STEP TWO: ALTERNATE INSTALLATION: IN POND WHERE THE WATER LEVEL FLUCTUATES SIGNIFICANTLY, YOU MAY NEED TO SUSPEND A SMALL WEIGHT (30LB TO 50LB) FROM THE UNIT. THE WEIGHT SHOULD BE LIGHT ENOUGH SO THE UNIT CAN RISE AS THE WATER LEVEL RISES AND BE LIGHT ENOUGH SO THE UNIT CAN RISE AS THE WATER LEVEL FALLS.

STEP THREE: AT THIS TIME THE FOUNTAIN IS READY FOR OPERATION. THE UNIT CAN NOW BE CONNECTED TO THE ELECTRICAL CIRCUIT. THE UNIT MUST BE PROVIDED WITH A DISCONNECT SWITCH. SHOOT CIRCUIT AND GROUND FAULT PROTECTED ON RATED WIRE TO UNIT. STRESS PLATE LISTS THE UNIT'S ELECTRICAL RATINGS. ELECTRICAL INSTALLATION MUST FOLLOW LOCAL AND NATIONAL ELECTRICAL CODES AND SHOULD BE PERFORMED BY A CERTIFIED ELECTRICIAN.



POND FOUNTAIN PLAN

GRAND ARBOR RESERVE

CITY OF MADISON, DANE COUNTY, WISCONSIN

D'ONOFRIO KOTTHE AND ASSOCIATES, INC.
 7300 Westport Way, Madison, WI 53717
 Phone: 608.262.7200 • Fax: 608.262.1888
 YOUR NATURAL RESOURCE FOR LAND DEVELOPMENT

SCALE: 1" = 30'
 DRAWING NO. 46
 DATE: 04-26-16
 PROJECT: GRAND ARBOR RESERVE
 SHEET NUMBER: L-103