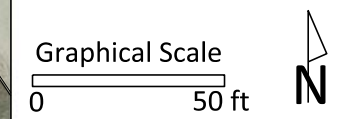




City of Madison
 Department of Public Works
PARKS DIVISION

City-County Building, Suite 104
 210 Martin Luther King, Jr. Blvd.
 Madison, WI 53703

play
**MADISON
 PARKS**



PROJECT:
**WARNER PARK
 BOAT LAUNCH
 PARKING LOT**

**WARNER PARK
 1101 WOODWARD DR
 MADISON, WI 53704**

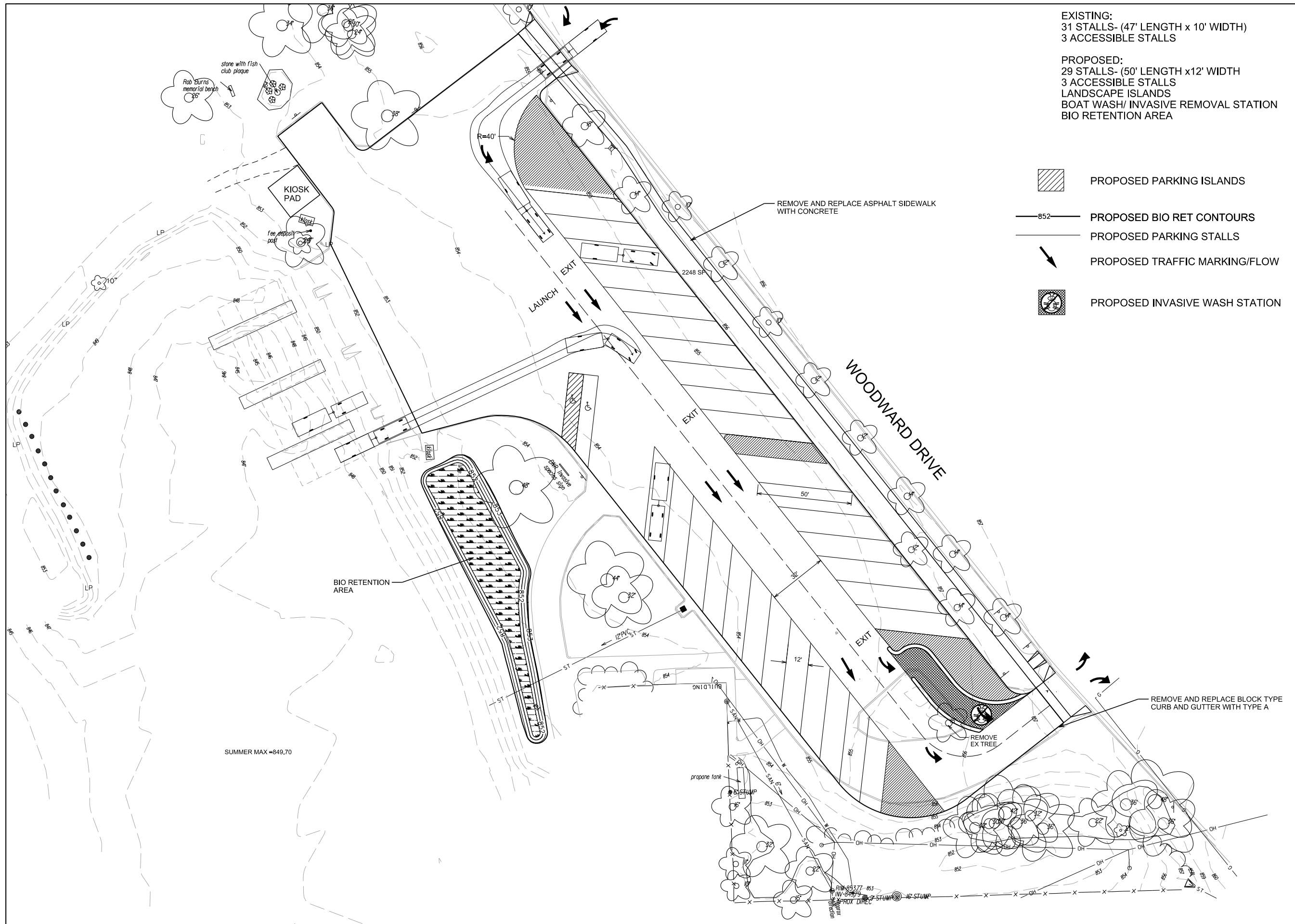
Although every effort has been made in preparing these plans and checking them for accuracy, the contractor and subcontractors must check all details and dimensions of their trade and be responsible for the same.

ITEM	DATE
Drawn by:	xx-xx-xxxx
Approved by:	xx-xx-xxxx

PUBLIC WORKS PROJECT #:
####


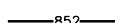



SHEET TITLE:
PLAN

SHEET NUMBER:
P-1




EXISTING:
 31 STALLS- (47' LENGTH x 10' WIDTH)
 3 ACCESSIBLE STALLS

PROPOSED:
 29 STALLS- (50' LENGTH x 12' WIDTH)
 3 ACCESSIBLE STALLS
 LANDSCAPE ISLANDS
 BOAT WASH/ INVASIVE REMOVAL STATION
 BIO RETENTION AREA

-  PROPOSED PARKING ISLANDS
-  852 PROPOSED BIO RET CONTOURS
-  PROPOSED PARKING STALLS
-  PROPOSED TRAFFIC MARKING/FLOW
-  PROPOSED INVASIVE WASH STATION

City of Madison
 Department of Public Works
PARKS DIVISION
 City-County Building, Suite 104
 210 Martin Luther King, Jr. Blvd.
 Madison, WI 53703

play
**MADISON
 PARKS**

Graphical Scale
 0 50 ft 

PROJECT:
**WARNER PARK
 BOAT LAUNCH
 PARKING LOT**

**WARNER PARK
 1101 WOODWARD DR
 MADISON, WI 53704**

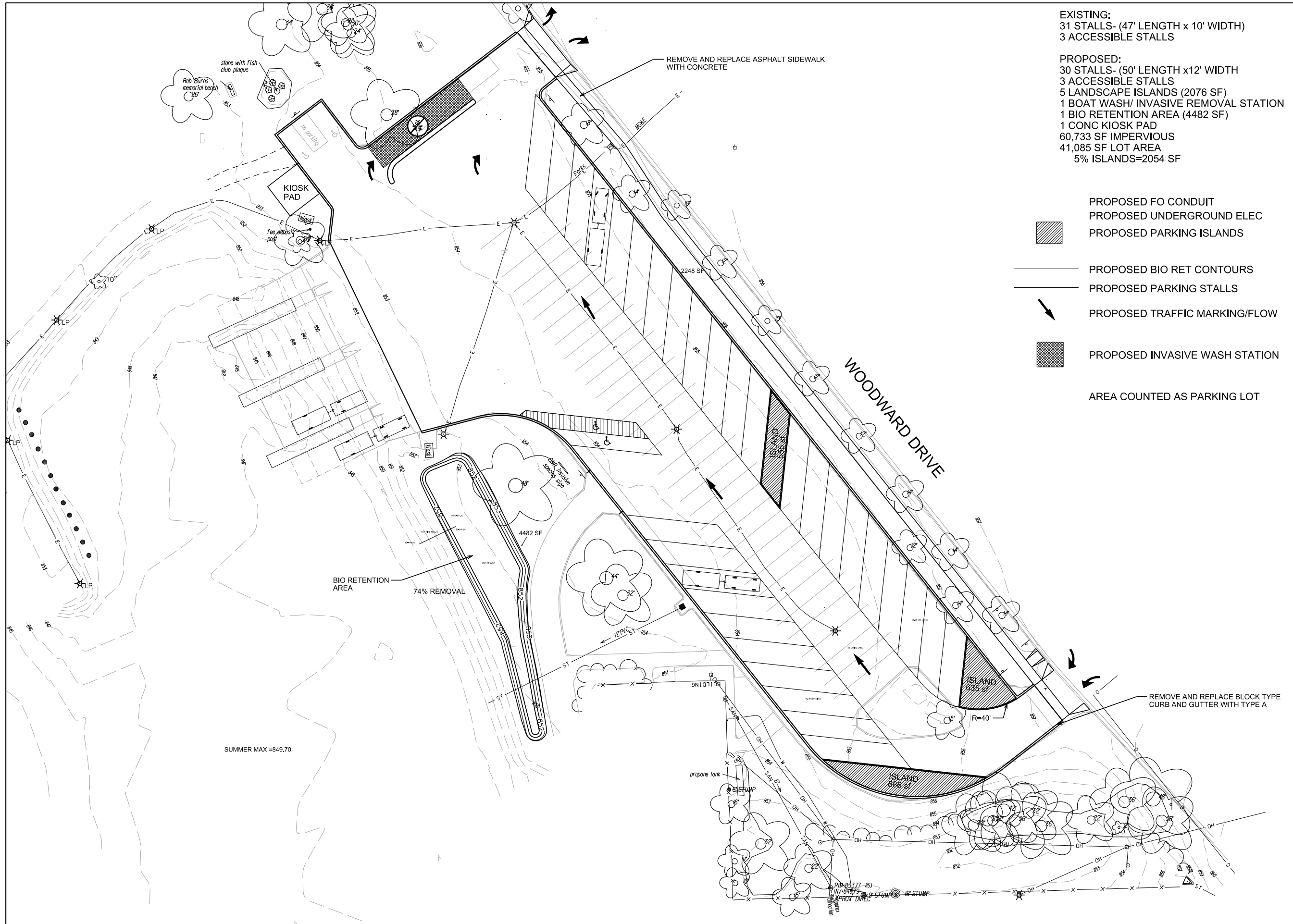
Although every effort has been made in preparing these plans and checking them for accuracy, the contractor and subcontractors must check all details and dimensions of their trade and be responsible for the same.

ITEM	DATE
Drawn by:	xx-xx-xxxx
Approved by:	xx-xx-xxxx

PUBLIC WORKS PROJECT #:
####

SHEET TITLE:
**DISPLAY- COUNTER
 CLOCKWISE**

SHEET NUMBER:
P-3



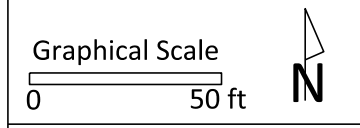
EXISTING:
 31 STALLS- (47' LENGTH x 10' WIDTH)
 3 ACCESSIBLE STALLS

PROPOSED:
 30 STALLS- (50' LENGTH x 12' WIDTH)
 3 ACCESSIBLE STALLS
 5 LANDSCAPE ISLANDS (2076 SF)
 1 BOAT WASH/ INVASIVE REMOVAL STATION
 1 BIO RETENTION AREA (4482 SF)
 1 CONC KIOSK PAD
 60,733 SF IMPERVIOUS
 41,085 SF LOT AREA
 5% ISLANDS=2054 SF

- PROPOSED FO CONDUIT
- PROPOSED UNDERGROUND ELEC
- PROPOSED PARKING ISLANDS
- PROPOSED BIO RET CONTOURS
- PROPOSED PARKING STALLS
- PROPOSED TRAFFIC MARKING/FLOW
- PROPOSED INVASIVE WASH STATION
- AREA COUNTED AS PARKING LOT

City of Madison
 Department of Public Works
PARKS DIVISION
 City-County Building, Suite 104
 210 Martin Luther King, Jr. Blvd.
 Madison, WI 53703

play
MADISON
PARKS



PROJECT:
WARNER PARK
BOAT LAUNCH
PARKING LOT

WARNER PARK
1101 WOODWARD DR
MADISON, WI 53704

Although every effort has been made in preparing these plans and checking them for accuracy, the contractor and subcontractors must check all details and dimensions of their trade and be responsible for the same.

ITEM	DATE
Drawn by:	xx-xx-xxxx
Approved by:	xx-xx-xxxx

PUBLIC WORKS PROJECT #:
####

SHEET TITLE:
DISPLAY

SHEET NUMBER:
P-1