



**Femrite Project Description**  
**Lot 9 (5201) & Lot 10 (5301) Femrite Drive**  
**October 26, 2005**

**Description of Project:**

Zoned = M1 (both lots)

Urban Design District 1

Building Ht. = 22'-3 1/2" t/parapet

Total Site = 11.65 acres (507,875 s.f.)

Impervious Area

Building 1 = 65,125 s.f.

(575' x 110' x 23'-3 1/2" / parapet ht. single slope to south 1/4"-low eave ht. of 20'-0")

Building 2 = 54,125 s.f.

Total = 119,250 s.f.

Asphalt = 175,840 s.f.

Sidewalk = 10,000 s.f.

Total Impervious Area = 305,090 s.f. = (60%)

Total Green Area = 254,215 s.f. = (40%)

Parking Stalls = 218

Handicap Parking Stalls = 8

Bike Stalls = 23

This project will consist of two phases.

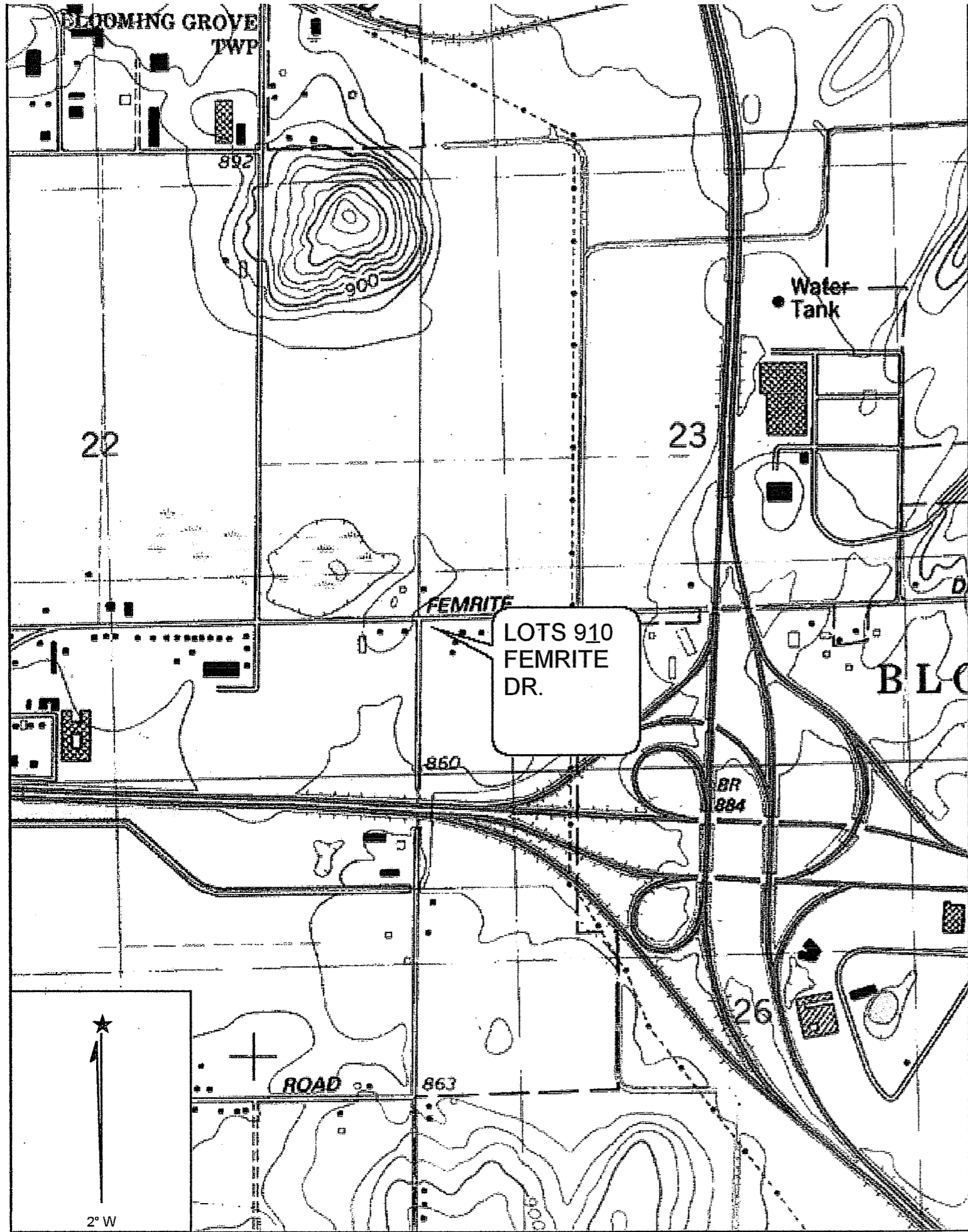
Phase 1 shall consist of building 1 with a car parking lot to the north and a loading area to the south.

It will include (2) 30' driveways along Femrite Drive and (1) 40' driveway along Agriculture Drive. The north, east and west elevations to have a combination of these building materials (starting at ground level); 8" x 16" burnished block (cranberry blend), E.I.F.S. (engineered insulation finish system/ prairie stone) and horizontal super rib metal panel by Centria. The south elevation will incorporate a loading dock area, and will have vertical metal wall panel (Metallic). This will allow for versatility to future tenants. The parapet shown along with the roof sloping from the north to the south of the building will assist in screening the mechanical systems. The dumpster location will be at the south elevation loading dock / 4'-0" below the finish floor. The concrete retaining wall to the west and the building wall to the east will help screen the dumpster from these views. Building 2 construction will screen the south. At this time tenants are not specified, although any tenant shall meet the requirements by Urban Design District 1 and the developer (Rhodia, Inc.).

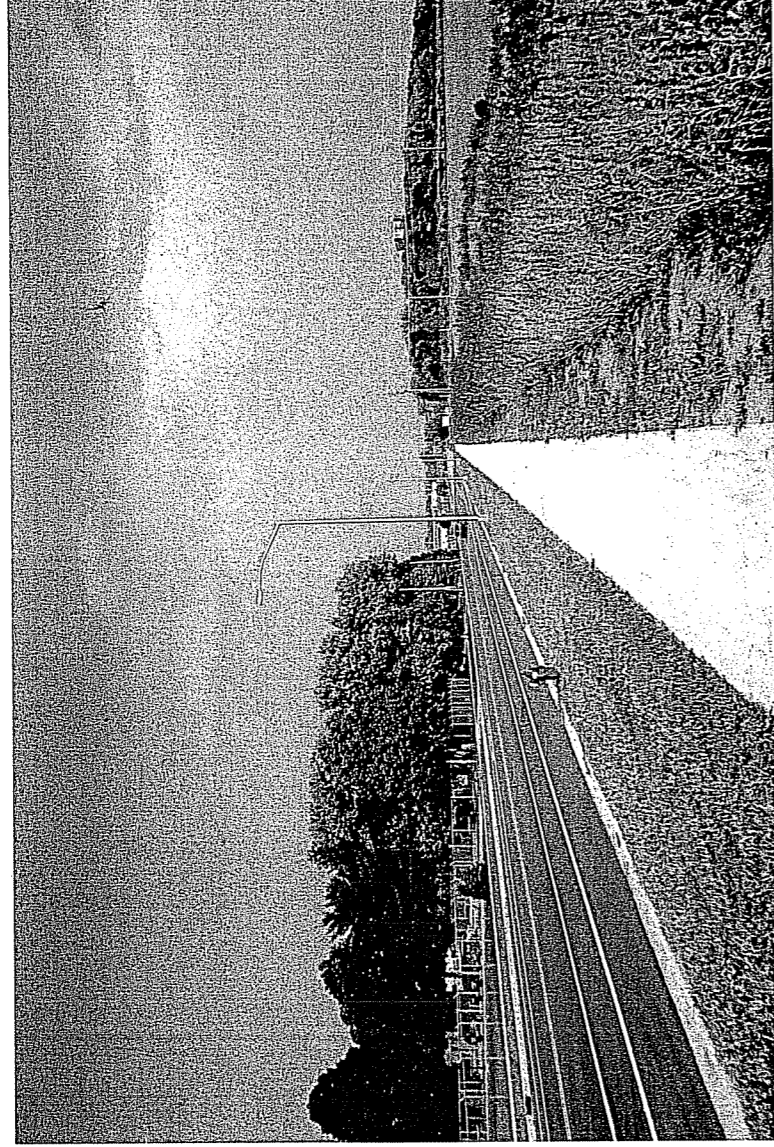
Phase 2 shall consist of building 2 with the car parking lot to the west and south, the timeline for this building has not been established at this time. Similar appearance and construction to building 1.

**RUEDEBUSCH DEVELOPMENT & CONSTRUCTION, INC.**

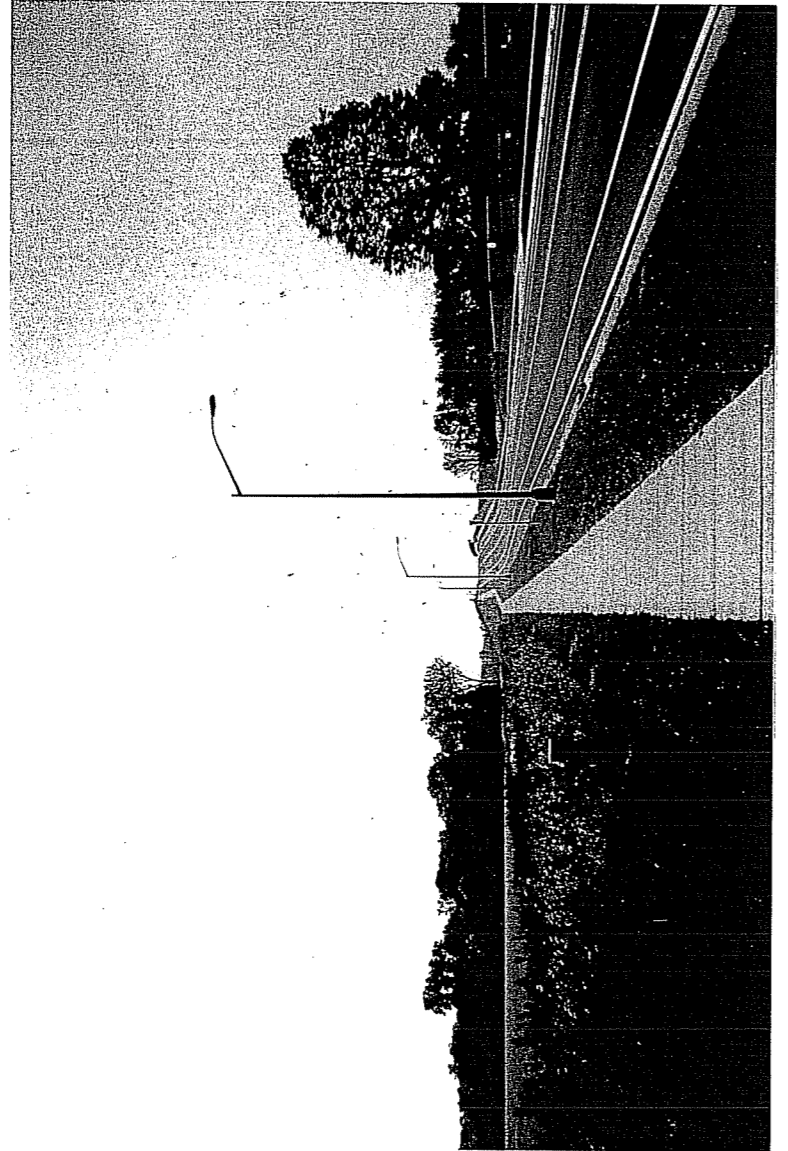
4605 DOVETAIL DRIVE • MADISON WI 53704 • PHONE: 608.249.2012 • FAX: 249.2032



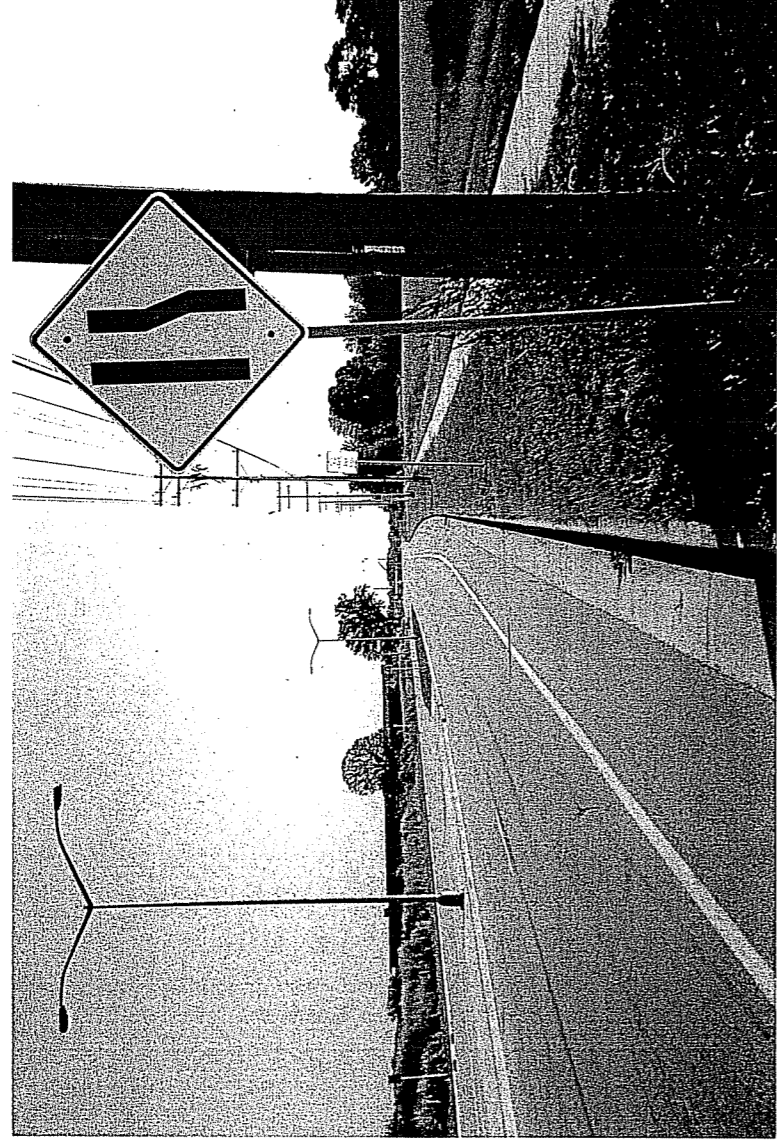
LOOKING NORTH ALONG AGRICULTURE DRIVE



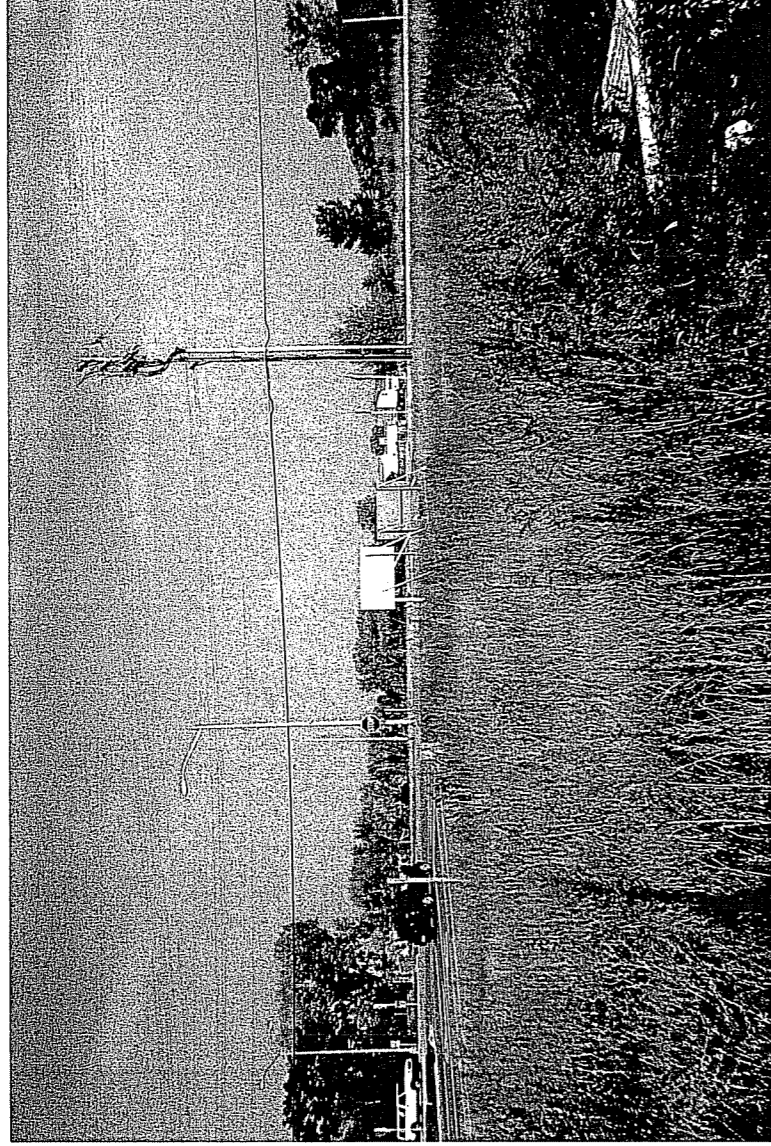
LOOKING SOUTH ALONG AGRICULTURE DRIVE



LOOKING EAST ALONG FEMRITE DRIVE



LOOKING NORTHWEST AT FEMRITE DRIVE & AGRICULTURE DRIVE INTERSECTION

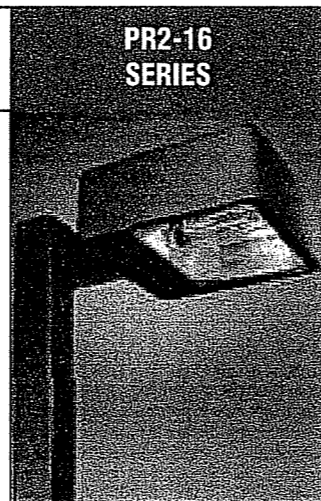


**ENTIRE OVERALL SITE**

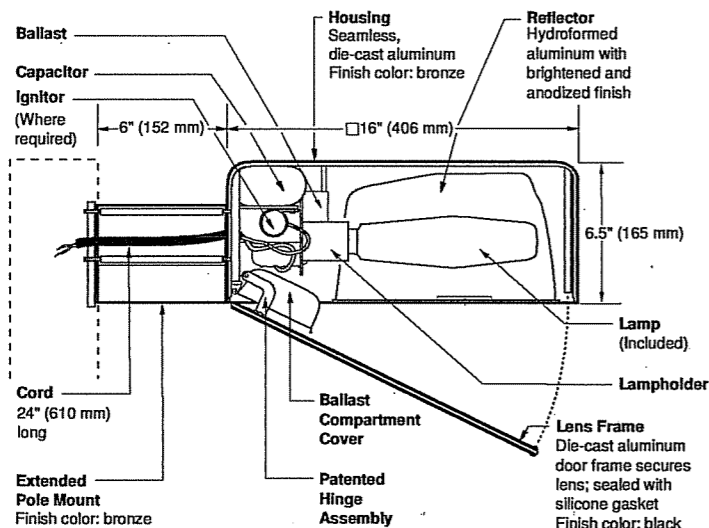


6" EXTENDED POLE MOUNT

# 16" (406 mm) PARKING/ROADWAY LIGHT



PR2-16  
SERIES



### Notes

SPEC #	WATTAGE	CATALOG #
<b>PULSE START METAL HALIDE</b>		
<input type="checkbox"/> SPEC #	200W PSMH	PR2620-(a)(b)
<input type="checkbox"/> SPEC #	250W PSMH	PR2625-(a)(b)
<input type="checkbox"/> SPEC #	320W PSMH	PR2632-(a)(b)
<input type="checkbox"/> SPEC #	350W PSMH	PR2635-(a)(b)
<input checked="" type="checkbox"/> SPEC #	400W PSMH	PR2640-(a)(b)
<b>METAL HALIDE</b>		
<input type="checkbox"/> SPEC #	175W MH	PR2417-(a)(b)
<input type="checkbox"/> SPEC #	250W MH	PR2425-(a)(b)
<input type="checkbox"/> SPEC #	400W MH	PR2440-(a)(b)
<b>HIGH PRESSURE SODIUM</b>		
<input type="checkbox"/> SPEC #	250W HPS	PR2525-(a)(b)
<input type="checkbox"/> SPEC #	400W HPS	PR2540-(a)(b)

Specify (a) Voltage & (b) Options.

(a) VOLTAGE SUFFIX KEY	
M	120/208/240/277V (Standard)
T	120/277/347V (Canada Only) (Standard)
1	120V
2	277V
27	277V Reactor (PSMH Only)
3	208V
4	240V
5	480V
6	347V (Canada Only)

For voltage availability outside the US and Canada, see Bulletin TD-9 or contact your Ruud Lighting authorized International Distributor.

(b) OPTIONS (factory-installed)	
-(a)F	Fusing
-(a)P	Button Photocell
-5P	External Photocell (for 480V)
Q	Quartz Standby (includes 100W quartz lamp) (N/A on 277V Reactor)

Specify (a) Single Voltage — See Voltage Suffix Key

### GENERAL DESCRIPTION

Parking lot and roadway luminaire for HID lamp, totally enclosed. Supplied with IES Type III (250W MH is field adjustable to Type II) optical system. Housing is seamless, die-cast aluminum. Mounting consists of a 1.8" (44 mm) wide by 4.5" (114 mm) high by 6" (152 mm) long extruded aluminum arm. The arm is held in place with two 3/8" (9 mm) mounting rods fastened to a steel backing plate inside the pole, and by two nuts inside the fixture housing. Mounting rods are provided with sealing washers to prevent water leakage. Lens assembly consists of rigid aluminum frame and high-impact, clear-tempered glass.

### ELECTRICAL

Fixture includes clear, mogul-base lamp. Pulse-rated porcelain enclosed, 4kv-rated screw-shell-type lampholder with spring-loaded center contact. Lamp ignitor included where required. All ballast assemblies are high-power factor and use the following circuit type:

Reactor (277V PSMH)  
200 – 400W PSMH

CWA — Constant Wattage Autotransformer  
200 – 400W PSMH; 175 – 400W MH;  
250 – 400W HPS

### LABELS

ANSI lamp wattage label supplied, visible during relamping. UL Listed in US and Canada for wet locations and enclosure classified IP65 per IEC 529 and IEC 598.

### FINISH

Exclusive DeltaGuard® finish features an E-coat epoxy primer with medium bronze ultra-durable powder topcoat, providing excellent resistance to corrosion, ultraviolet degradation and abrasion. The finish is covered by our seven-year limited warranty.

### PATENTS

US 4,689,729

### ACCESSORIES

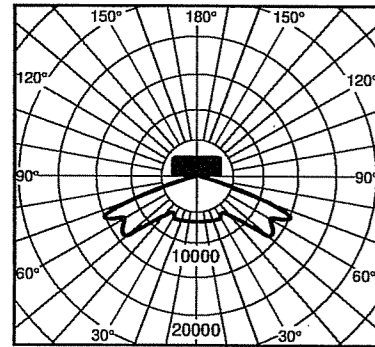
FWG-16 Wire Guard  
SBL-16 Backlight Shield



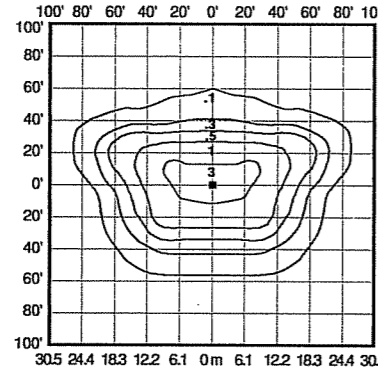
**EPA RATING**

EPA 0.95 for single fixture with 0° tilt (Consult factory for EPA rating on multiple units).

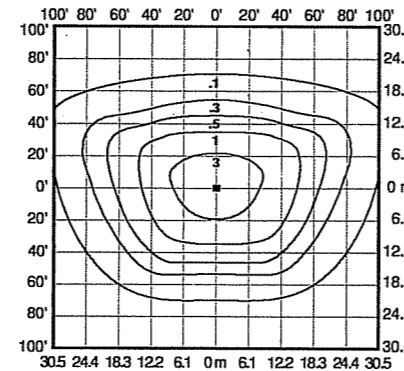
Isofootcandle plots show initial footcandles at grade. (Footcandles ÷ 0.0929 = Lux)



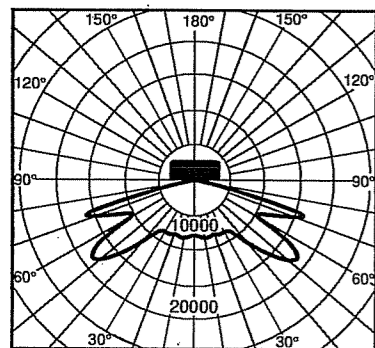
Lighting Sciences Inc.  
Certified Test Report No. LSI 10473  
Candlepower distribution curve of 400W MH  
Parking/Roadway Light



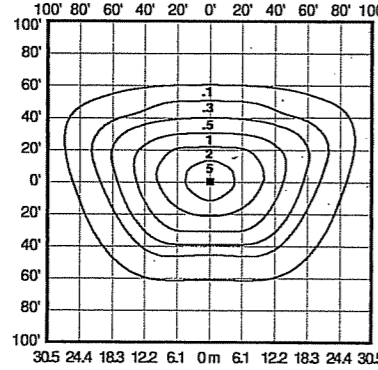
Isofootcandle plot of 250W MH  
Parking/Roadway Light at 25' (7.6 m)  
mounting height and 0° vertical tilt  
(Plan view)



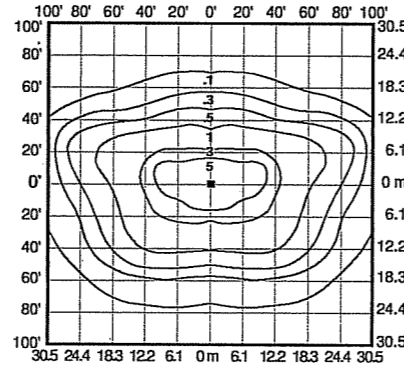
Isofootcandle plot of 400W MH  
Parking/Roadway Light at 30' (9.1 m)  
mounting height and 0° vertical tilt  
(Plan view)



Lighting Sciences Inc.  
Certified Test Report No. LSI 4941  
Candlepower distribution curve of 400W HPS  
Parking/Roadway Light

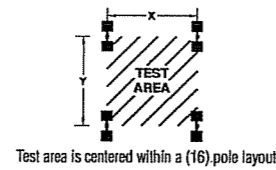


Isofootcandle plot of 250W HPS  
Parking/Roadway Light at 25' (7.6 m)  
mounting height and 0° vertical tilt  
(Plan view)



Isofootcandle plot of 400W HPS  
Parking/Roadway Light at 30' (9.1 m)  
mounting height and 0° vertical tilt  
(Plan view)

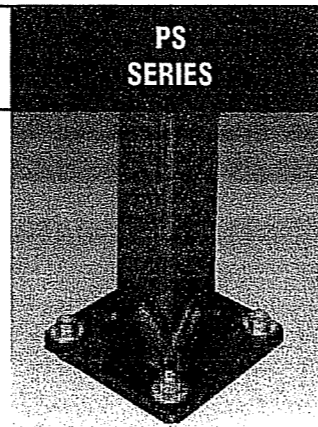
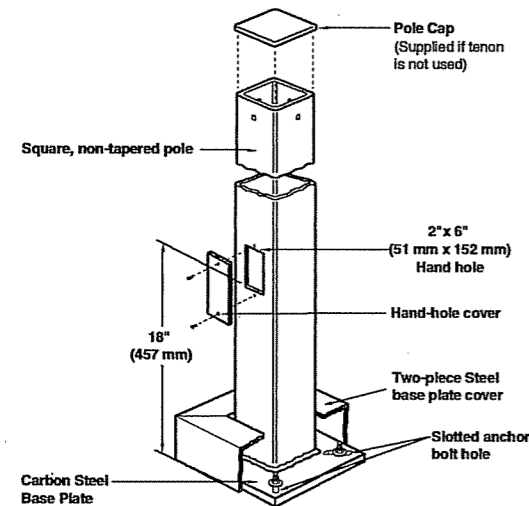
**Pole-spacing Example Data**



Average Initial Light Levels at Grade  
2 Fixtures per pole @ 180°  
(Footcandles ÷ 0.0929 = Lux)

Catalog #	Lamp Type	Lamp Lumens	Mounting Height	Max. Recommended Pole-spacing		Footcandles	Lux
				X	Y		
PR2417-M	175W MH	12,000	15' (4.6 m)	90' (27.4 m)	60' (18.3 m)	3.97	43
			20' (6.1 m)	120' (36.6 m)	80' (24.4 m)	2.15	23
PR2425-M	250W MH	20,000	20' (6.1 m)	120' (36.6 m)	80' (24.4 m)	3.60	39
			25' (7.6 m)	150' (45.7 m)	100' (30.5 m)	2.22	24
PR2440-M	400W MH	32,000	25' (7.6 m)	150' (45.7 m)	100' (30.5 m)	3.56	38
			30' (9.1 m)	180' (54.9 m)	120' (36.6 m)	2.41	26
PR2525-M	250W HPS	28,500	20' (6.1 m)	120' (35.6 m)	80' (24.4 m)	4.94	53
			25' (7.6 m)	180' (54.9 m)	120' (36.6 m)	3.08	33
PR2540-M	400W HPS	50,000	25' (7.6 m)	150' (45.7 m)	100' (30.5 m)	5.41	58
			30' (9.1 m)	180' (54.9 m)	120' (36.6 m)	3.67	40

**STEEL**  
**CROWN-WELD® POLES**



Notes

**SPEC # CATALOG # POLE SIZE**

**Square Steel Poles**

SPEC #	CATALOG #	H (ft) x W (in) x Wall (in)	H (m) x W (mm) x Wall (mm)
<input type="checkbox"/>	PS3S10C(a)BZ	10 x 3 x 0.125	3.0 x 76 x 3
<input type="checkbox"/>	PS3S15C(a)BZ	15 x 3 x 0.125	4.6 x 76 x 3
<input type="checkbox"/>	PS3S20C(a)BZ	20 x 3 x 0.125	6.1 x 76 x 3
<input type="checkbox"/>	PS4S10C(a)BZ	10 x 4 x 0.125	3.0 x 102 x 3
<input type="checkbox"/>	PS4S12C(a)BZ	12 x 4 x 0.125	3.7 x 102 x 3
<input type="checkbox"/>	PS4S15C(a)BZ	15 x 4 x 0.125	4.6 x 102 x 3
<input type="checkbox"/>	PS4S17C(a)BZ	17 x 4 x 0.125	5.2 x 102 x 3
<input type="checkbox"/>	PS4S20C(a)BZ	20 x 4 x 0.125	6.1 x 102 x 3
<input type="checkbox"/>	PS4S22C(a)BZ	22 x 4 x 0.125	6.7 x 102 x 3
<input checked="" type="checkbox"/>	PS4S25C(a)BZ	25 x 4 x 0.125	7.6 x 102 x 3
<input type="checkbox"/>	PS4S25S(a)BZ	25 x 4 x 0.188	7.6 x 102 x 5
<input type="checkbox"/>	PS4S27C(a)BZ	27 x 4 x 0.125	8.2 x 102 x 3
<input type="checkbox"/>	PS4S30S(a)BZ	30 x 4 x 0.188	9.1 x 102 x 5
<input type="checkbox"/>	PS5S25S(a)BZ	25 x 5 x 0.188	7.6 x 127 x 5
<input type="checkbox"/>	PS5S30S(a)BZ	30 x 5 x 0.188	9.1 x 127 x 5
<input type="checkbox"/>	PS6S30S(a)BZ	30 x 6 x 0.188	9.1 x 152 x 5

Specify (a) pole configuration.

**(a) POLE CONFIGURATION**

1	Single (direct mount) ✓	5	Triple (direct mount)
2	Twin @ 180° (direct mount) ✓	6	Quad (direct mount)
3	Twin @ 90° (direct mount)	T	TENON (order tenon separately)

For fixtures with fixed 20° mount, add prefix 2 to configuration numbers: i.e. 21, 22, 23, 25 and 26.

**GENERAL DESCRIPTION**

Non-tapered steel poles are supplied with welded base with cover, four galvanized anchor bolts, masonite mounting template and a pole cap (except tenon mount). Each bolt is provided with two washers and two nuts. Steel pole base has slotted holes. Per National Electrical Code requirements, pole is standard with a 2" x 6" (51 x 152 mm) hand hole, located 18" (457 mm) above bottom of pole base. A #10-32 stainless-steel weld stud with grounding lug is located inside pole, opposite hand hole; a hand hole cover is supplied but shipped separately. For EPA ratings, see "Windloading" sheet.

**PATENT**

US 5,820,255; 6,640,517

**MATERIALS**

Square, non-tapered pole of structural steel tubing (ASTM A 500); with a minimum yield strength of 46,000 p.s.i. Welded to a formed carbon steel base plate with a minimum yield strength of 36,000 p.s.i.

**FINISH**

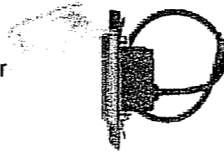
Exclusive DeltaGuard® finish features an E-coat epoxy primer with medium bronze ultra-durable powder topcoat, providing excellent resistance to corrosion, ultraviolet degradation and abrasion. The finish is covered by our seven-year limited warranty.

**LABELS**

Ruud Lighting square poles meet or exceed National Electrical Code Requirements. In the US, Ruud square poles are classified by Underwriters Laboratories Inc. for electrical ground bonding; in Canada, they are CSA certified for electrical ground bonding and structural strength.

**ACCESSORY**

Catalog # REC-GFIBZ (120V)  
Wet Listed In-use cover



GFI Outlet Accessory

**PS3S10C(a)BZ**

10' (3.0 m) x 3' (76 mm)  
 Wall thickness - 0.125" (3 mm)  
 Base plate - 10" (254 mm) square x 0.50" (13 mm) thick  
 Anchor bolts - 3/4"-10 x 18" (457 mm) + 3" (76 mm)  
 Bolt circle diameter - 10" (254 mm) 9.3" - 11"  
 (235 mm - 279 mm)  
 Maximum fixture weight - 200 lbs. (91 Kg)  
 Approximate shipping weight - 58 lbs. (26 Kg)

**PS3S15C(a)BZ**

15' (4.6 m) x 3' (76 mm)  
 Wall thickness - 0.125" (3 mm)  
 Base plate - 10" (254 mm) square x 0.750" (19 mm) thick  
 Anchor bolts - 3/4"-10 x 18" (457 mm) + 3" (76 mm)  
 Bolt circle diameter - 10" (254 mm) 9.3" - 11"  
 (235 mm - 279 mm)  
 Maximum fixture weight - 175 lbs. (79 Kg)  
 Approximate shipping weight - 82 lbs. (37 Kg)

**PS3S20C(a)BZ**

20' (6.1 m) x 3' (76 mm)  
 Wall thickness - 0.125" (3 mm)  
 Base plate - 10" (254 mm) square x 0.750" (19 mm) thick  
 Anchor bolts - 3/4"-10 x 18" (457 mm) + 3" (76 mm)  
 Bolt circle diameter - 10" (254 mm) 9.3" - 11"  
 (235 mm - 279 mm)  
 Maximum fixture weight - 140 lbs. (64 Kg)  
 Approximate shipping weight - 119 lbs. (54 Kg)

**PS4S10C(a)BZ**

10' (3.0 m) x 4' (102 mm)  
 Wall thickness - 0.125" (3 mm)  
 Base plate - 10" (254 mm) square x 0.750" (19 mm) thick  
 Anchor bolts - 3/4"-10 x 18" (457 mm) + 3" (76 mm)  
 Bolt circle diameter - 10" (254 mm) 9.3" - 11"  
 (235 mm - 279 mm)  
 Maximum fixture weight - 300 lbs. (136 Kg)  
 Approximate shipping weight - 78 lbs. (35 Kg)

**PS4S12C(a)BZ**

12' (3.7 m) x 4' (102 mm)  
 Wall thickness - 0.125" (3 mm)  
 Base plate - 10" (254 mm) square x 0.750" (19 mm) thick  
 Anchor bolts - 3/4"-10 x 18" (457 mm) + 3" (76 mm)  
 Bolt circle diameter - 10" (254 mm) 9.3" - 11"  
 (235 mm - 279 mm)  
 Maximum fixture weight - 300 lbs. (136 Kg)  
 Approximate shipping weight - 99 lbs. (45 Kg)

**PS4S15C(a)BZ**

15' (4.6 m) x 4' (102 mm)  
 Wall thickness - 0.125" (3 mm)  
 Base plate - 10" (254 mm) square x 0.750" (19 mm) thick  
 Anchor bolts - 3/4"-10 x 30" (762 mm) + 3" (76 mm)  
 Bolt circle diameter - 10" (254 mm) 9.3" - 11"  
 (235 mm - 279 mm)  
 Maximum fixture weight - 300 lbs. (136 Kg)  
 Approximate shipping weight - 119 lbs. (54 Kg)

**PS4S17C(a)BZ**

17' (5.2 m) x 4' (102 mm)  
 Wall thickness - 0.125" (3 mm)  
 Base plate - 10" (254 mm) square x 0.750" (19 mm) thick  
 Anchor bolts - 3/4"-10 x 30" (762 mm) + 3" (76 mm)  
 Bolt circle diameter - 10" (254 mm) 9.3" - 11"  
 (235 mm - 279 mm)  
 Maximum fixture weight - 300 lbs. (136 Kg)  
 Approximate shipping weight - 131 lbs. (59 Kg)

**PS4S20C(a)BZ**

20' (6.1 m) x 4' (102 mm)  
 Wall thickness - 0.125" (3 mm)  
 Base plate - 10" (254 mm) square x 0.750" (19 mm) thick  
 Anchor bolts - 3/4"-10 x 30" (762 mm) + 3" (76 mm)  
 Bolt circle diameter - 10" (254 mm) 9.3" - 11"  
 (235 mm - 279 mm)  
 Maximum fixture weight - 270 lbs. (123 Kg)  
 Approximate shipping weight - 150 lbs. (68 Kg)

**PS4S22C(a)BZ**

22' (6.7 m) x 4' (102 mm)  
 Wall thickness - 0.125" (3 mm)  
 Base plate - 10" (254 mm) square x 0.750" (19 mm) thick  
 Anchor bolts - 3/4"-10 x 30" (762 mm) + 3" (76 mm)  
 Bolt circle diameter - 10" (254 mm) 9.3" - 11"  
 (235 mm - 279 mm)  
 Maximum fixture weight - 240 lbs. (109 Kg)  
 Approximate shipping weight - 163 lbs. (74 Kg)

**PS4S25C(a)BZ**

25' (7.6 m) x 4' (102 mm) ✱  
 Wall thickness - 0.125" (5 mm)  
 Base plate - 10" (254 mm) square x 0.750" (19 mm) thick  
 Anchor bolts - 3/4"-10 x 30" (762 mm) + 3" (76 mm)  
 Bolt circle diameter - 10" (254 mm) 9.3" - 11"  
 (235 mm - 279 mm)  
 Maximum fixture weight - 210 lbs. (95 Kg)  
 Approximate shipping weight - 182 lbs. (83 Kg)

**PS4S25S(a)BZ**

25' (7.6 m) x 4' (102 mm)  
 Wall thickness - 0.188" (5 mm)  
 Base plate - 10" (254 mm) square x 0.750" (19 mm) thick  
 Anchor bolts - 3/4"-10 x 30" (762 mm) + 3" (76 mm)  
 Bolt circle diameter - 10" (254 mm) 9.3" - 11"  
 (235 mm - 279 mm)  
 Maximum fixture weight - 325 lbs. (148 Kg)  
 Approximate shipping weight - 252 lbs. (114 Kg)

**PS4S27C(a)BZ**

27' (8.2 m) x 4' (102 mm)  
 Wall thickness - 0.125" (3 mm)  
 Base plate - 10" (254 mm) square x 0.750" (19 mm) thick  
 Anchor bolts - 3/4"-10 x 30" (762 mm) + 3" (76 mm)  
 Bolt circle diameter - 10" (254 mm) 9.3" - 11"  
 (235 mm - 279 mm)  
 Maximum fixture weight - 200 lbs. (91 Kg)  
 Approximate shipping weight - 196 lbs. (89 Kg)

**PS4S30S(a)BZ**

30' (9.1 m) x 4' (102 mm)  
 Wall thickness - 0.188" (5 mm)  
 Base plate - 10" (254 mm) square x 0.750" (19 mm) thick  
 Anchor bolts - 3/4"-10 x 30" (762 mm) + 3" (76 mm)  
 Bolt circle diameter - 10" (254 mm) 9.3" - 11"  
 (235 mm - 279 mm)  
 Maximum fixture weight - 250 lbs. (113 Kg)  
 Approximate shipping weight - 301 lbs. (137 Kg)

**PS5S25S(a)BZ**

25' (7.6 m) x 5' (127 mm)  
 Wall thickness - 0.188" (5 mm)  
 Base plate - 10" (254 mm) square x 0.750" (19 mm) thick  
 Anchor bolts - 1"-8 x 36" (914 mm) + 4" (102 mm)  
 Bolt circle diameter - 10" (254 mm) 9.7" - 11.3"  
 (248 mm - 287 mm)  
 Maximum fixture weight - 450 lbs. (204 Kg)  
 Approximate shipping weight - 320 lbs. (145 Kg)

**PS5S30S(a)BZ**

30' (9.1 m) x 5' (127 mm)  
 Wall thickness - 0.188" (5 mm)  
 Base plate - 10" (254 mm) square x 0.750" (19 mm) thick  
 Anchor bolts - 1"-8 x 36" (914 mm) + 4" (102 mm)  
 Bolt circle diameter - 10" (254 mm) 9.7" - 11.3"  
 (248 mm - 287 mm)  
 Maximum fixture weight - 375 lbs. (170 Kg)  
 Approximate shipping weight - 379 lbs. (172 Kg)

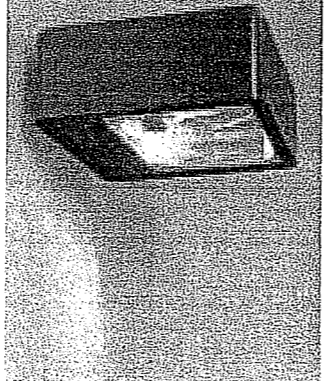
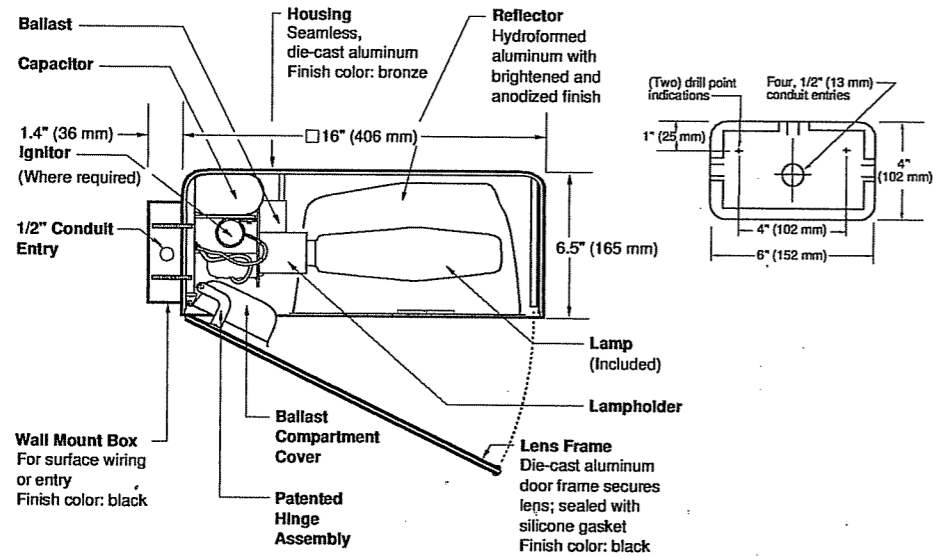
**PS6S30S(a)BZ**

30' (9.1 m) x 6' (152 mm)  
 Wall thickness - 0.188" (5 mm)  
 Base plate - 12" (305 mm) square x 1" (25 mm) thick  
 Anchor bolts - 1"-8 x 36" (914 mm) + 4" (102 mm)  
 Bolt circle diameter - 11.5" (292 mm) 11.3" - 12.8"  
 (286 mm - 324 mm)  
 Maximum fixture weight - 525 lbs. (238 Kg)  
 Approximate shipping weight - 457 lbs. (207 Kg)

WALL MOUNT

# 16" (406 mm) PARKING/ROADWAY LIGHT

PRW-16  
SERIES



Notes

SPEC #	WATTAGE	CATALOG #
<b>PULSE START METAL HALIDE</b>		
<input type="checkbox"/>	SPEC # 200W PSMH	PRW620-(a)(b)
<input type="checkbox"/>	SPEC # 250W PSMH	PRW625-(a)(b)
<input type="checkbox"/>	SPEC # 320W PSMH	PRW632-(a)(b)
<input type="checkbox"/>	SPEC # 350W PSMH	PRW635-(a)(b)
<input checked="" type="checkbox"/>	SPEC # 400W PSMH	PRW640-(a)(b)
<b>METAL HALIDE</b>		
<input type="checkbox"/>	SPEC # 175W MH	PRW417-(a)(b)
<input type="checkbox"/>	SPEC # 250W MH	PRW425-(a)(b)
<input type="checkbox"/>	SPEC # 400W MH	PRW440-(a)(b)
<b>HIGH PRESSURE SODIUM</b>		
<input type="checkbox"/>	SPEC # 250W HPS	PRW525-(a)(b)
<input type="checkbox"/>	SPEC # 400W HPS	PRW540-(a)(b)

(a) VOLTAGE SUFFIX KEY	
M	120/208/240/277V (Standard)
T	120/277/347V (Canada Only) (Standard)
1	120V
2	277V
27	277V Reactor (PSMH Only)
3	208V
4	240V
5	480V
6	347V (Canada Only)

For voltage availability outside the US and Canada, see Bulletin TD-9 or contact your Ruud Lighting authorized International Distributor.

(b) OPTIONS (factory-installed)	
-(a)F	Fusing
-(a)P	Button Photocell
-5P	External Photocell (for 480V)
Q	Quartz Standby (includes 100W quartz lamp) (N/A on 277V Reactor)

Specify (a) Single Voltage — See Voltage Suffix Key

Specify (a) Voltage & (b) Options.

**GENERAL DESCRIPTION**  
 Parking lot and roadway luminaire for HID lamp, totally enclosed. Supplied with IES Type III (250W MH is field adjustable to Type II) optical system. Housing is seamless, die-cast aluminum. Fixture mounts to wall with a 4" (102 mm) x 6" (152 mm) x 1.4" (36 mm) cast aluminum mounting box and gasket. Two 5/16" threaded mounting studs are supplied with nuts and sealing washers to attach fixture to mounting box. Also provided are four threaded and closed 1/2" conduit entries. Lens assembly consists of rigid aluminum frame and high-impact, clear-tempered glass.

**ELECTRICAL**  
 Fixture includes clear, mogul-base lamp. Pulse-rated porcelain enclosed, 4kv-rated screw-shell-type lampholder with spring-loaded center contact. Lamp ignitor included where required. All ballast assemblies are high-power factor and use the following circuit type:  
 Reactor (277V PSMH)  
 200 – 400W PSMH  
 CWA — Constant Wattage Autotransformer  
 200 – 400W PSMH; 175 – 400W MH;  
 250 – 400W HPS

**LABELS**  
 ANSI lamp wattage label supplied, visible during relamping. UL Listed in US and Canada for wet locations and enclosure classified IP65 per IEC 529 and IEC 598.

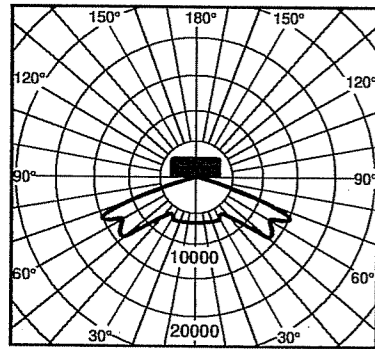
**FINISH**  
 Exclusive DeltaGuard® finish features an E-coat epoxy primer with medium bronze ultra-durable powder topcoat, providing excellent resistance to corrosion, ultraviolet degradation and abrasion. The finish is covered by our seven-year limited warranty.

**PATENTS**  
 US 4,689,729

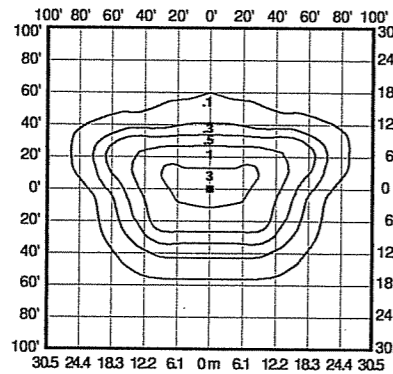
**ACCESSORIES**  
 FWG-16 Wire Guard  
 SBL-16 Backlight Shield



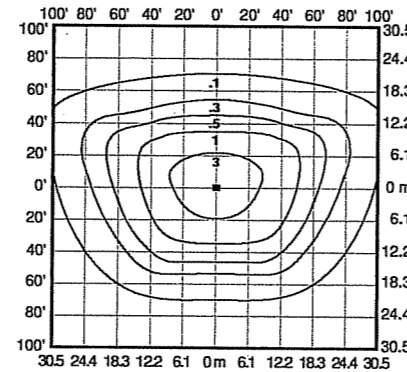
Isofootcandle plots show initial footcandles at grade. (Footcandles ÷ 0.0929 = Lux)



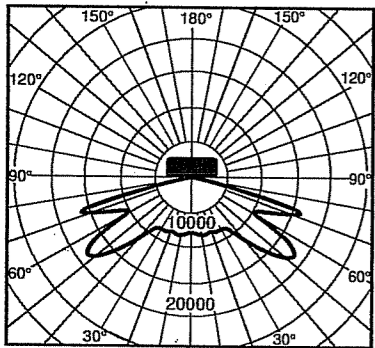
Lighting Sciences Inc.  
Certified Test Report No. LSI 10473  
Candlepower distribution curve of 400W MH  
Parking/Roadway Light.



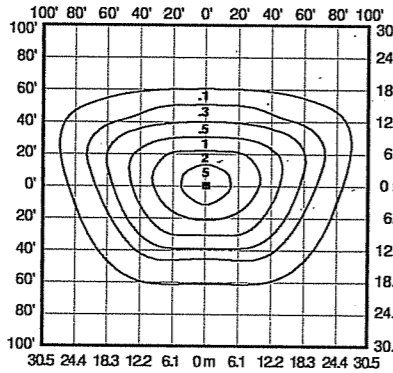
Isofootcandle plot of 250W MH  
Parking/Roadway Light at 25' (7.6 m)  
mounting height and 0° vertical tilt.  
(Plan view)



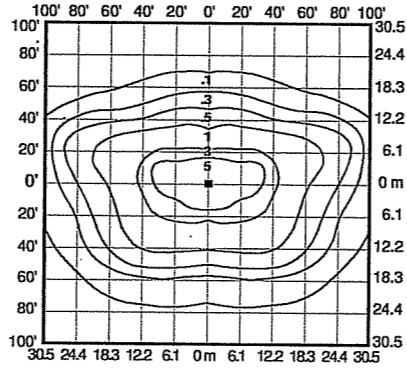
Isofootcandle plot of 400W MH  
Parking/Roadway Light at 30' (9.1 m)  
mounting height and 0° vertical tilt.  
(Plan view)



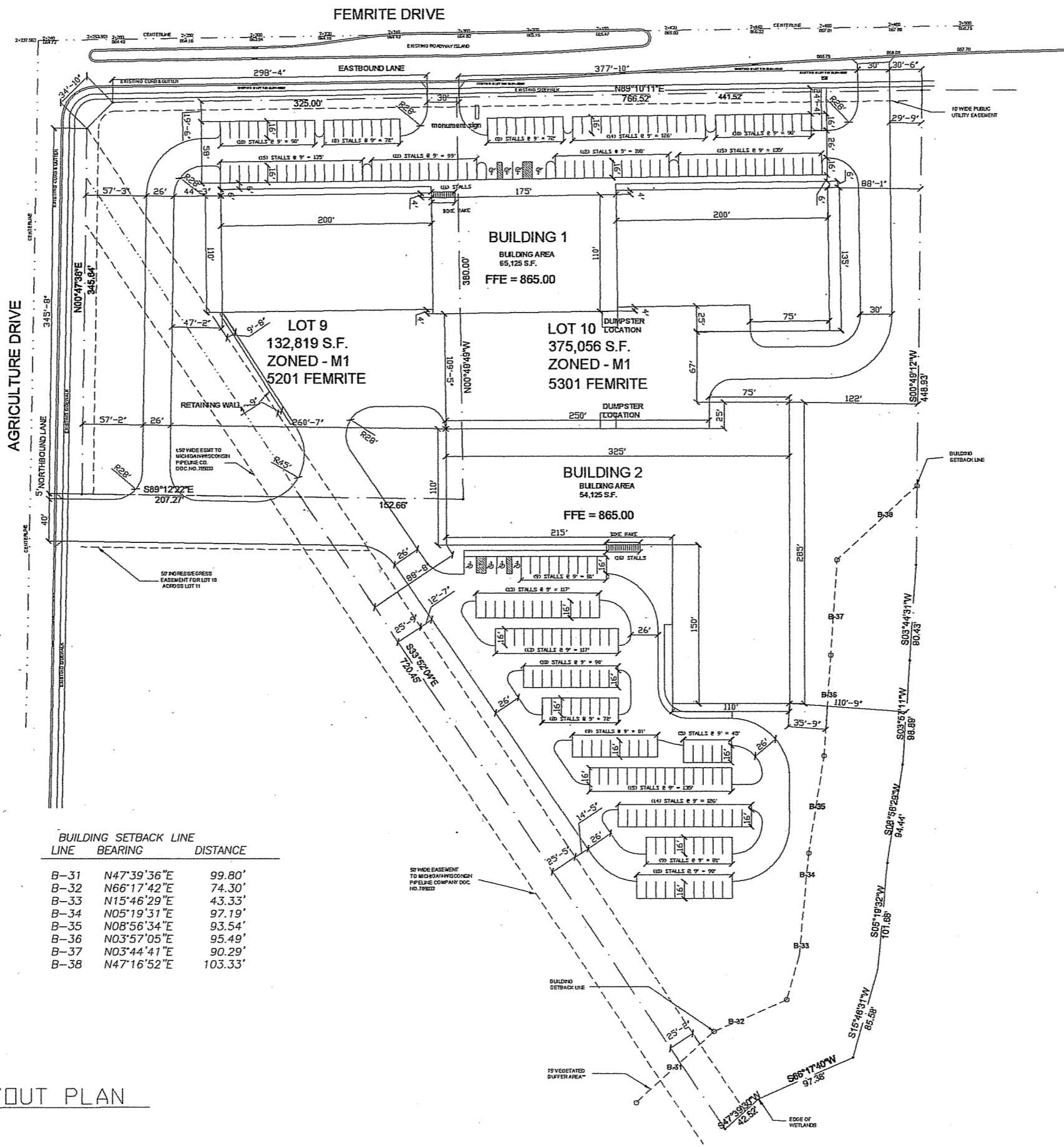
Lighting Sciences Inc.  
Certified Test Report No. LSI 4941  
Candlepower distribution curve of 400W HPS  
Parking/Roadway Light.



Isofootcandle plot of 250W HPS  
Parking/Roadway Light at 25' (7.6 m)  
mounting height and 0° vertical tilt.  
(Plan view)



Isofootcandle plot of 400W HPS  
Parking/Roadway Light at 30' (9.1 m)  
mounting height and 0° vertical tilt.  
(Plan view)

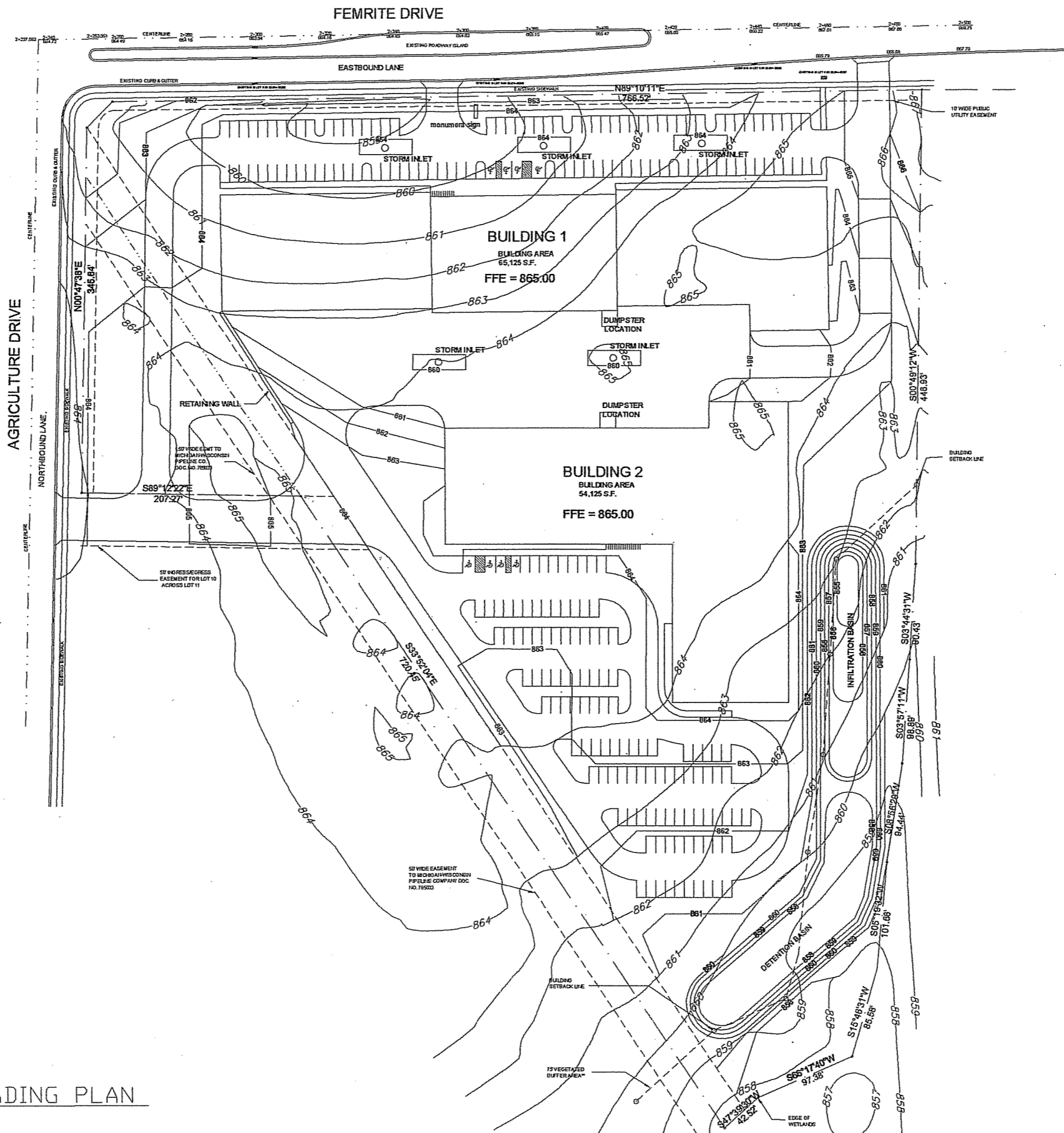


PROJECT NAME:  
**LOT 9 (5201) & LOT 10 (5301) FEMRITE DRIVE MADISON, WI**

SHEET TITLE:  
**SITE LAYOUT PLAN**

NO.	DATE	REVISIONS	BY
PROJECT NUMBER:	5137		
DATE:	10-26-05		
DRAWN BY:	TC		
CHECKED BY:	D. NELSEN		
PROJECT MANAGER:	D. NELSEN		
FILE NAME:	S:\ENGINEERING\FEMRITE		





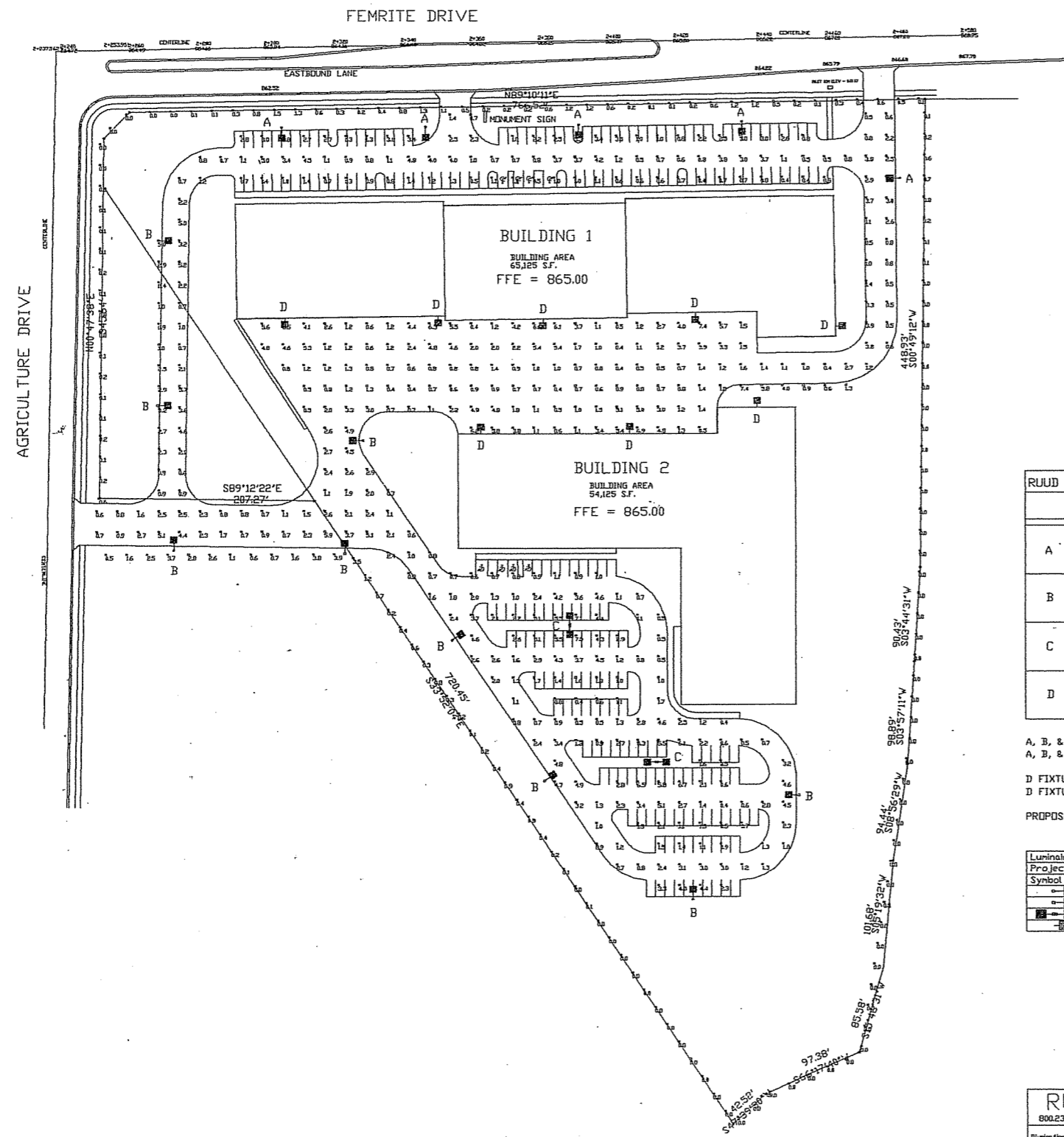
**SITE GRADING PLAN**

PROJECT NAME:  
**LOT 9 (5201) &  
LOT 10 (5301)  
FEMRITE DRIVE  
MADISON, WI**

SHEET TITLE:  
**SITE GRADING PLAN**

NO.	DATE	REVISIONS	BY
PROJECT NUMBER: 5137			
DATE: 10-26-05			
DRAWN BY: TC			
CHECKED BY: D. NELSEN			
PROJECT MANAGER: D. NELSEN			
FILE NAME: S:\ENGINEERING\FEMRITE			

SHEET NUMBER  
**C2.0**



RUJD LIGHTING SCHEDULE			
SYMBOL	QTY	CONSISTS OF:	
		QTY	CATALOG NUMBER
A	5	5	PR2640-M PARKING / ROADWAY, 400W PSMH
		5	PS4S25C1BZ POLE - 25' X 4' SQ. X .125' WALL - SINGLE
		5	SBL-16 BACKLIGHT SHIELD
B	9	9	PR2640-M PARKING / ROADWAY, 400W PSMH
		9	PS4S25C1BZ POLE - 25' X 4' SQ. X .125' WALL - SINGLE
C	2	4	PR2640-M PARKING / ROADWAY, 400W PSMH
		2	PS4S25C2BZ POLE - 25' X 4' SQ. X .125' WALL - DOUBLE
D	8	8	PRV640-M PARKING / ROADWAY, 400W PSMH

A, B, & C FIXTURES MOUNTING HEIGHT: 27' / AFG  
A, B, & C FIXTURES TILT ANGLE: 0 DEGREES  
D FIXTURES MOUNTING HEIGHT: 21' / AFG  
D FIXTURES TILT ANGLE: 0 DEGREES  
PROPOSED POLES MEET 100 MPH SUSTAINED WINDS WITH SPECIFIED EQUIPMENT

Luminaire Schedule						
Project: All Projects						
Symbol	Qty	Label	Arrangement	Lumens	LLF	Description
A	5	A	SINGLE	40000	0.800	PR2640-M (400W PSMH V/BLS)
B	9	B	SINGLE	40000	0.800	PR2640-M (400W PSMH N/BLS)
C	2	C	BACK-BACK	40000	0.800	PR2640-M (400W PSMH N/BLS)
D	8	D	SINGLE	40000	0.800	PRV640-M (400W PSMH N/BLS)

Numeric Summary						
Project: All Projects						
Label	Avg	Max	Min	Avg/Min	Max/Min	
PROPERTY LINE	0.40	3.9	0.0	0.00	0.00	
GRADE	2.14	8.5	0.4	5.35	21.25	

<b>RUJD LIGHTING</b> 800.236.7000 USA (www.rujdlighting.com) 905.671.9991 CAN <small>Illustration results shown on this lighting design are based on project parameters provided to Rujd Lighting used in conjunction with luminaire test procedures conducted under laboratory conditions. Actual project conditions differing from these design parameters may affect final results. The customer is responsible for verifying compliance with any applicable electrical, lighting, or energy code.</small>	Date: 10/25/2005 Scale: 1"=60'	Layout by: DAN WALTER
	Project Name: #99366 - FEMRITE PROJECT	
	Filename: S102SRMDCV.a32	
	FOOTCANDLES CALCULATED AT GRADE USING MEAN LUMENS	

PROJECT NAME:  
**LOT 9 (5201) &  
LOT 10 (5301)  
FEMRITE DRIVE  
MADISON, WI**

SHEET TITLE:  
**SITE LIGHTING PLAN**

NO.	DATE	REVISIONS	BY

PROJECT NUMBER: 5137  
DATE: 10-26-05  
DRAWN BY: TC  
CHECKED BY: D. NELSEN  
PROJECT MANAGER: D. NELSEN  
FILE NAME: S:\ENGINEERING\FEMRITE



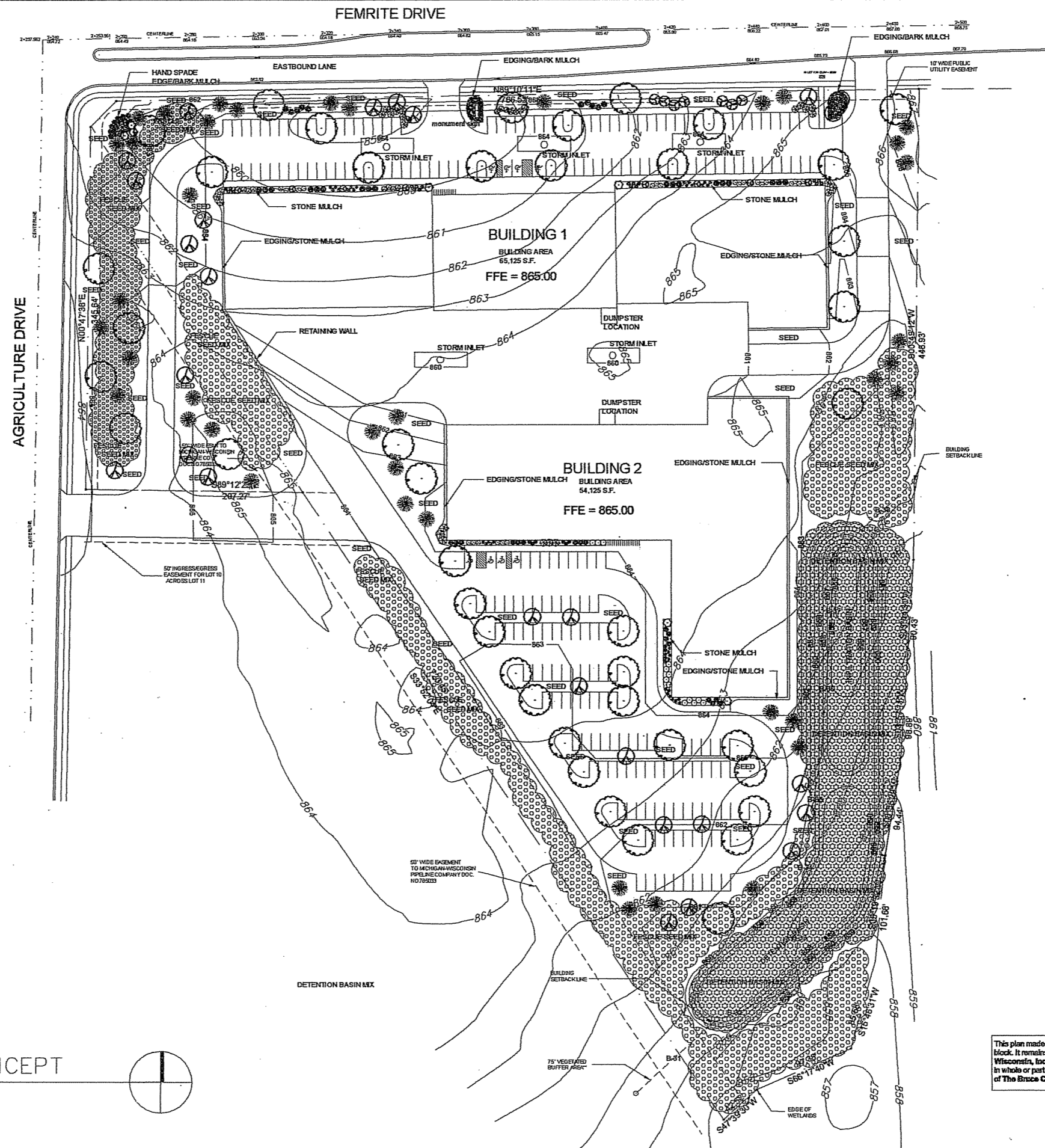
PLANTING LEGEND

- SHADE TREES:**
  - Autumn Purple Ash 2-1/2"
  - Autumn Blaze Maple 2-1/2"
  - Greenspire Linden 2-1/2"
  - Palmore Green Ash 2-1/2"
  - Skyline Honeylocust 2-1/2"
  - Pin Oak 2"
  - Whitespire Birch (cp.) 10'
- ORNAMENTALS:**
  - Pratts Fire Crabapple 2"
  - Pinkspire Crabapple 2"
  - Thornless Cockspur Hawthorn 2"
  - Sergeant Crabapple (cp.) 5'
  - Chanticleer Callery Pear 2"
  - Autumn Balance Serviceberry 6'
  - Royal Star Star Magnolia 5'
- DECIDUOUS SHRUBS:**
  - Tures Winged Euonymus 30"
  - Bailey Compact Amer. Viburnum 30"
  - Chicago Lustre Viburnum 3'
  - Froebel Spirea 18"
  - Goktfame Spirea 18"
  - Kalm St. Johnswort #2 CONT.
  - Scarlet Meckland Rose #2 CONT.
  - Nearby Wild Rose #2 CONT.
  - Snowbound Spirea #5 CONT.
- EVERGREEN TREES:**
  - Black Hills Spruce 5'
  - Douglas Fir 5'
  - Techy Arborvitae 5'
  - Moundshellen Juniper 4'
  - Emerald Arborvitae 4'
- EVERGREEN SHRUBS:**
  - EverLow Yew 15"
  - Compact Pfitzer Juniper #2 CONT.
  - Sea Green Juniper #2 CONT.
  - Woodward Globe Arborvitae #5 CONT.
- PERENNIALS:**
  - Bremen Astilbe #1 CONT.
  - Black Eyed Susan #1 CONT.
  - Karl Forester Feather Reed Grass #2 CONT.
  - Palace Purple Coral Bells #1 CONT.
  - Slella D'Orn Daylily #1 CONT.
  - Russian Sage #1 CONT.
  - May Night Sage #1 CONT.
  - Palace Purple Coral Bells #1 CONT.
  - Hamelin Dwarf Fountain Grass #2 CONT.
  - Purple Dome Aster #1 CONT.

GENERAL NOTES

- A) Areas labeled "Bark Mulch" to receive a mixture of hardwood shredded bark mulch spread to a 3" depth over pre-emergent.
- B) Individual trees (and shrub groupings) found along perimeter of property as well as those found within lawn areas to receive bark rings (and bark beds) consisting of a mixture of hardwood shredded bark mulch spread to a minimum 3" depth (3' wide beds for shrub groupings).
- C) "Edging" to be Valley View Black Diamond Plastic Edging or equivalent.
- D) Areas labeled "Stone Mulch" to receive 1-1/2" washed stone spread to a 3" depth over fabric weed barrier.
- E) "Seed" areas shall be finish-graded and seeded at a rate of 4 lbs. per 1,000 sq. ft. Use a nurse cover crop like annual rye grass at 2 lbs. per 1,000 sq. ft. Mulch with blown hay or straw which is mechanically crimped in place.
- F) Areas labeled "Seed" shall receive a mixture of the following types:
  - 40% Palmer Ryegrass
  - 20% Baron Bluegrass
  - 20% Nassau Bluegrass
  - 20% Penrlawn Creeping Red Fescue
- G) Areas labeled "Fescue Seed Mix" shall be seeded with OLDS Seed Companies "SURVIVOR MIX" at a rate of 6 lbs. per 1,000 sq. ft. Use a nurse cover crop like annual rye grass at 2 lbs. per 1,000 sq. ft. Mulch with blown hay or straw which is mechanically crimped in place.
- H) Areas labeled "Detention Basin Mix" shall be seeded with Prairie Nursery's "Detention Basin Wet Prairie Mix" at a rate of 1/2 lb. per 1,000 sq. ft. Use a nurse cover crop like annual rye at 2 lbs. per 1,000 sq. ft. Mulch with blown hay or straw.
- I) Plant beds adjacent to building foundation to be mulched with 1-1/2" diameter washed stone mulch spread to a 3"-4" depth over fabric weed barrier.

PRELIMINARY LANDSCAPE CONCEPT



This plan made exclusively for the party named in the title block. It remains the property of The Bruce Company of Wisconsin, Inc. and may not be reproduced or implemented in whole or part by any method without prior written consent of The Bruce Company of Wisconsin, Inc.

the bruce company  
LANDSCAPE ARCHITECTS  
LANDSCAPE CONTRACTORS  
2830 W. BELTLINE HWY  
P.O. BOX 920330  
MADISON, WI 53762-0330  
TEL (608) 836-7041  
FAX (608) 831-6266

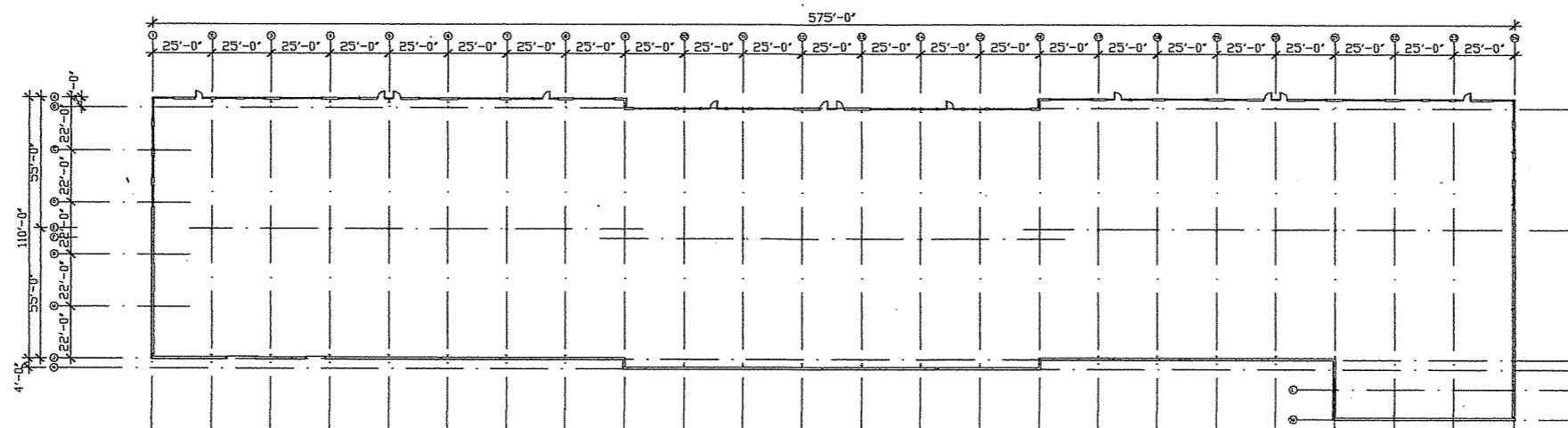
PROJECT NAME:  
LOT 9-10 FEMRITE DR

SHEET TITLE:  
PRELIMINARY  
LANDSCAPE CONCEPT

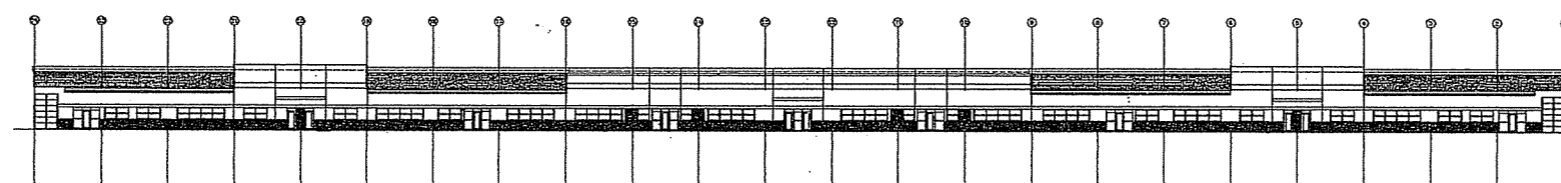
NO.	DATE	REVISIONS
PROJECT NUMBER:	5137	
DATE:	10-25-05	
DRAWN BY:	CPP	
CHECKED BY:	D. NELSEN	
PROJECT MANAGER:	D. NELSEN	
FILE NAME:	C:\DAVTEMP	

SHEET NUMBER

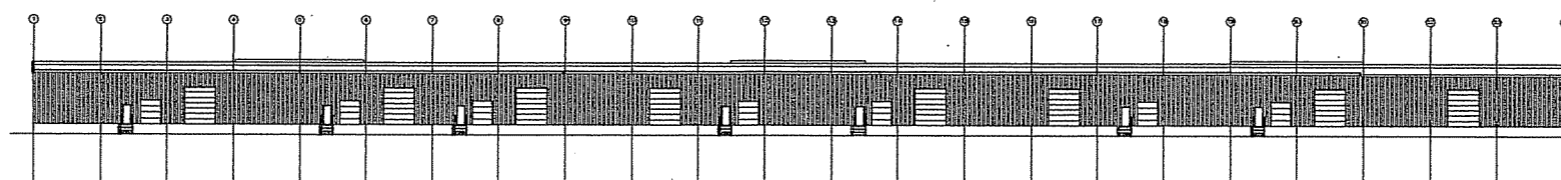
L.1



**FLOOR PLAN**

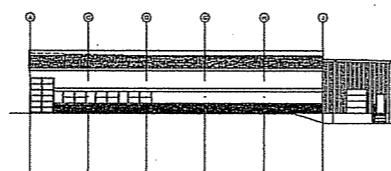


**NORTH ELEVATION**

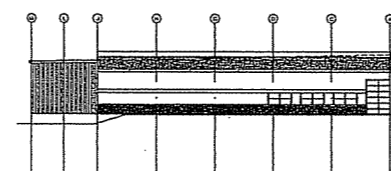


**SOUTH ELEVATION**

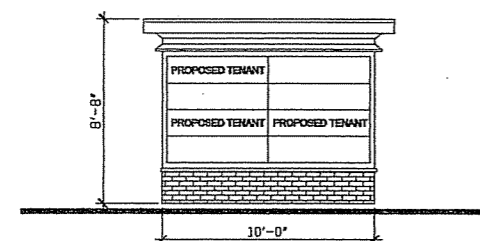
SCALE: 1/32" = 1'-0"



**WEST ELEVATION**



**EAST ELEVATION**



**MONUMENT SIGN**

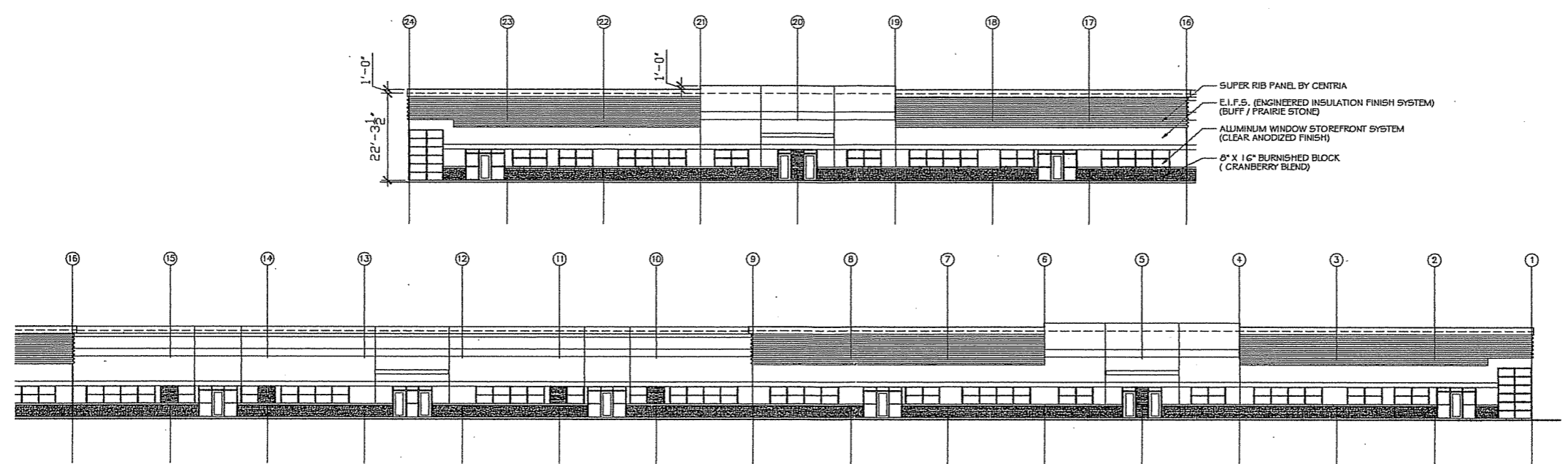
PROJECT NAME:  
**LOT 9 (5201) &  
LOT 10 (5301)  
FEMRITE DRIVE  
MADISON, WI**

SHEET TITLE:  
**FLOOR PLAN**

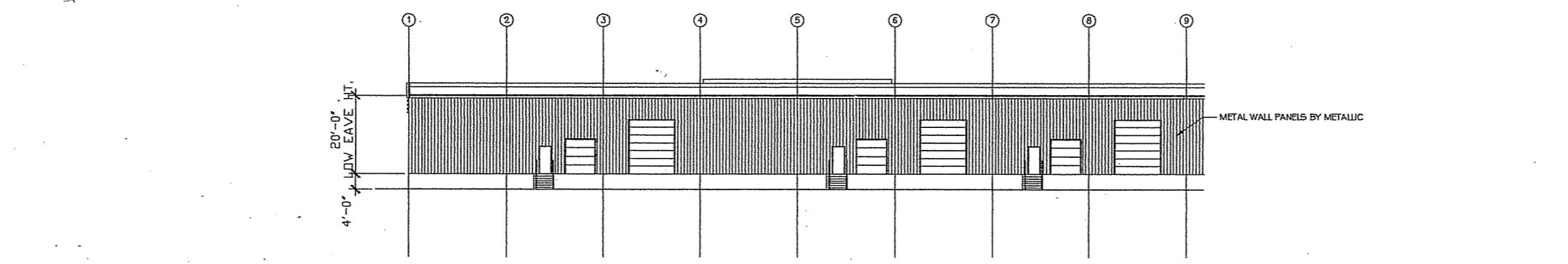
NO.	DATE	REVISIONS	BY
-----	------	-----------	----

PROJECT NUMBER: 5137  
DATE: 10-26-05  
DRAWN BY: TC  
CHECKED BY: D. NELSEN  
PROJECT MANAGER: D. NELSEN  
FILE NAME: S:\ENGINEERING\FEMRITE

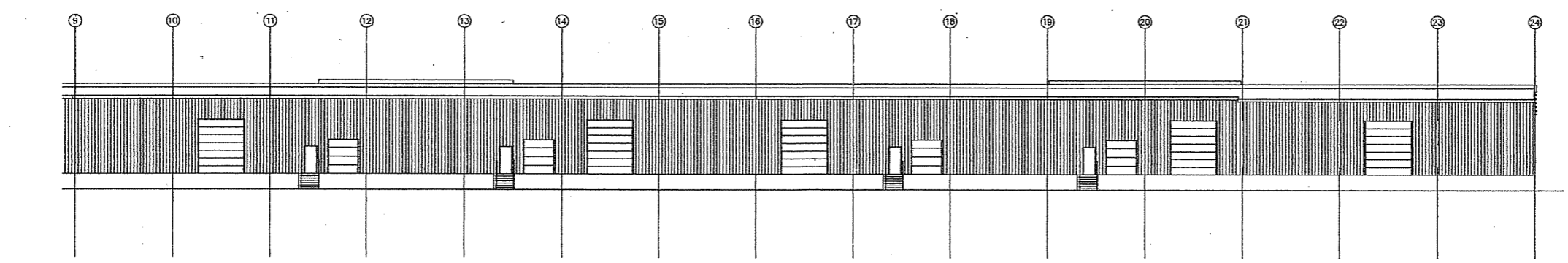
SHEET NUMBER  
**A1.1**



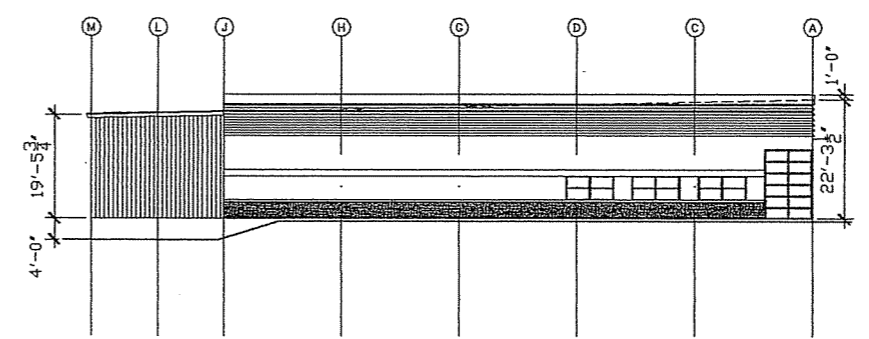
**NORTH ELEVATION**



**SOUTH ELEVATION**



**WEST ELEVATION**



**EAST ELEVATION**

PROJECT NAME:  
**LOT 9 (5201) &  
LOT 10 (5301)  
FEMRITE DRIVE  
MADISON, WI**

SHEET TITLE:  
**ENLARGED ELEVATIONS**

NO.	DATE	REVISIONS	BY
PROJECT NUMBER: 5137			
DATE: 10-26-05			
DRAWN BY: TC			
CHECKED BY: D. NELSEN			
PROJECT MANAGER: D. NELSEN			
FILE NAME: S:\ENGINEERING\FEMRITE			