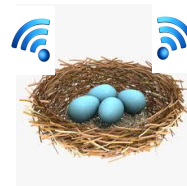


# Creating a wide-area wireless infrastructure for experimentation and to serve the community

WiNEST



Suman Banerjee  
UW-Madison  
[suman@cs.wisc.edu](mailto:suman@cs.wisc.edu)

# An outdoor, city-wide wireless infrastructure

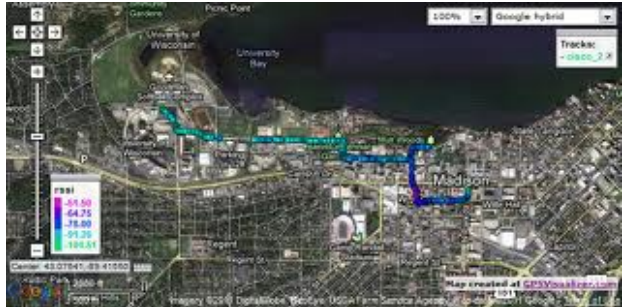
WiMAX base stations



City-wide



Vehicular applications



# Goals

- Serve some **societal needs** with a real group of users
- Mobile **experimentation** at scale
  - Focus on density within urban + rural areas

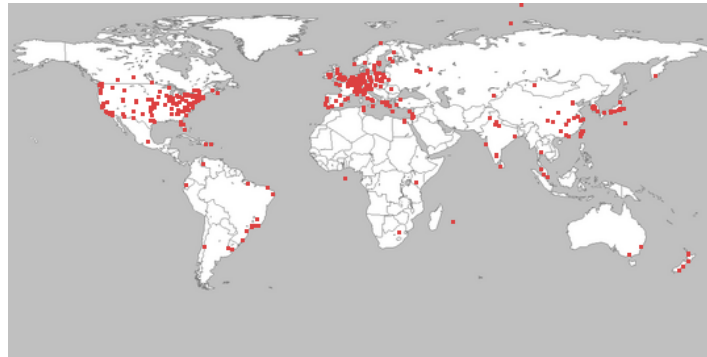
# Want the best of multiple worlds

ORBIT



Density

PlanetLab



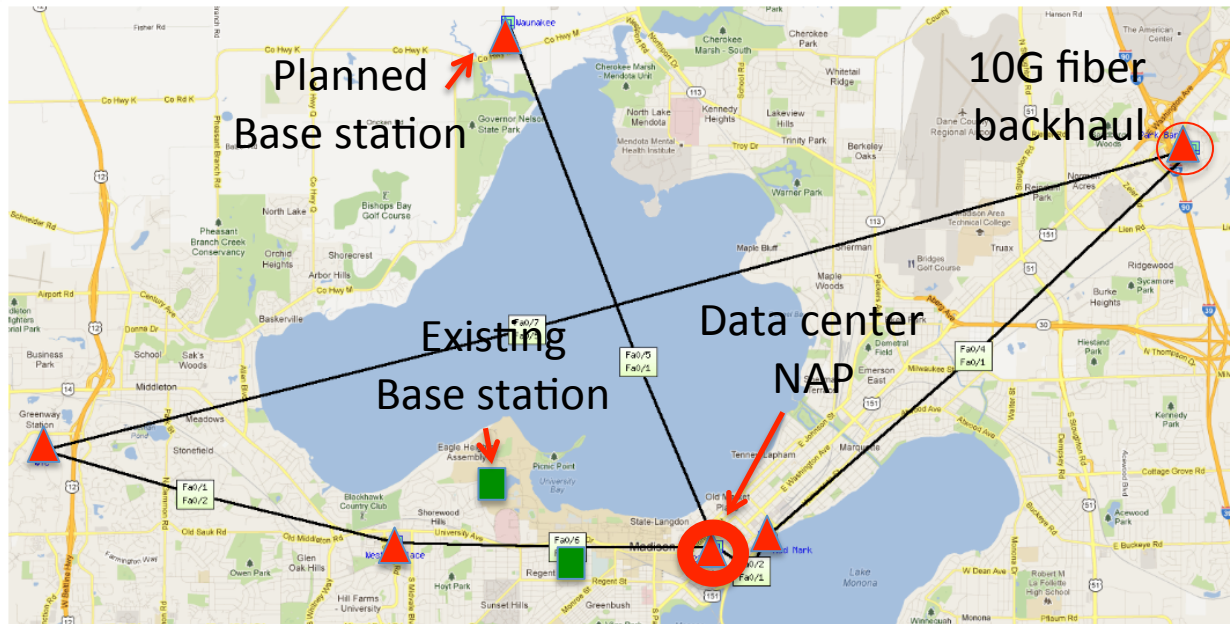
Scale

Users



# Tentative locations

Can be modified to cover other sites (e.g., south side of Madison?)

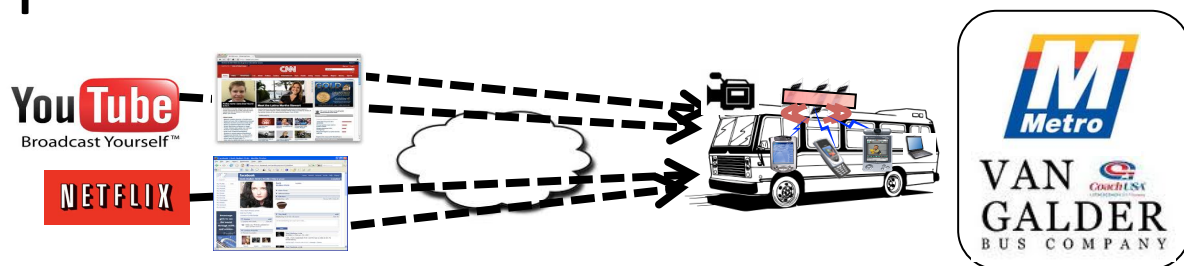


Upto 10 WiMAX base stations will be deployed in Madison, WI, plan to cover about 50+ sq. miles



# Vehicular uses: WiRover

- Provide connectivity to Metro transit buses, police and ambulances



- **Buses:** > 4 years in operation for Internet connectivity
  - Madison Metro Transit (city transit)
  - Van Galder Bus (long distance)
- **Ambulances:** similar application with Milwaukee EMS
  - (started in July 2012)



# WiRover demo in July 2013



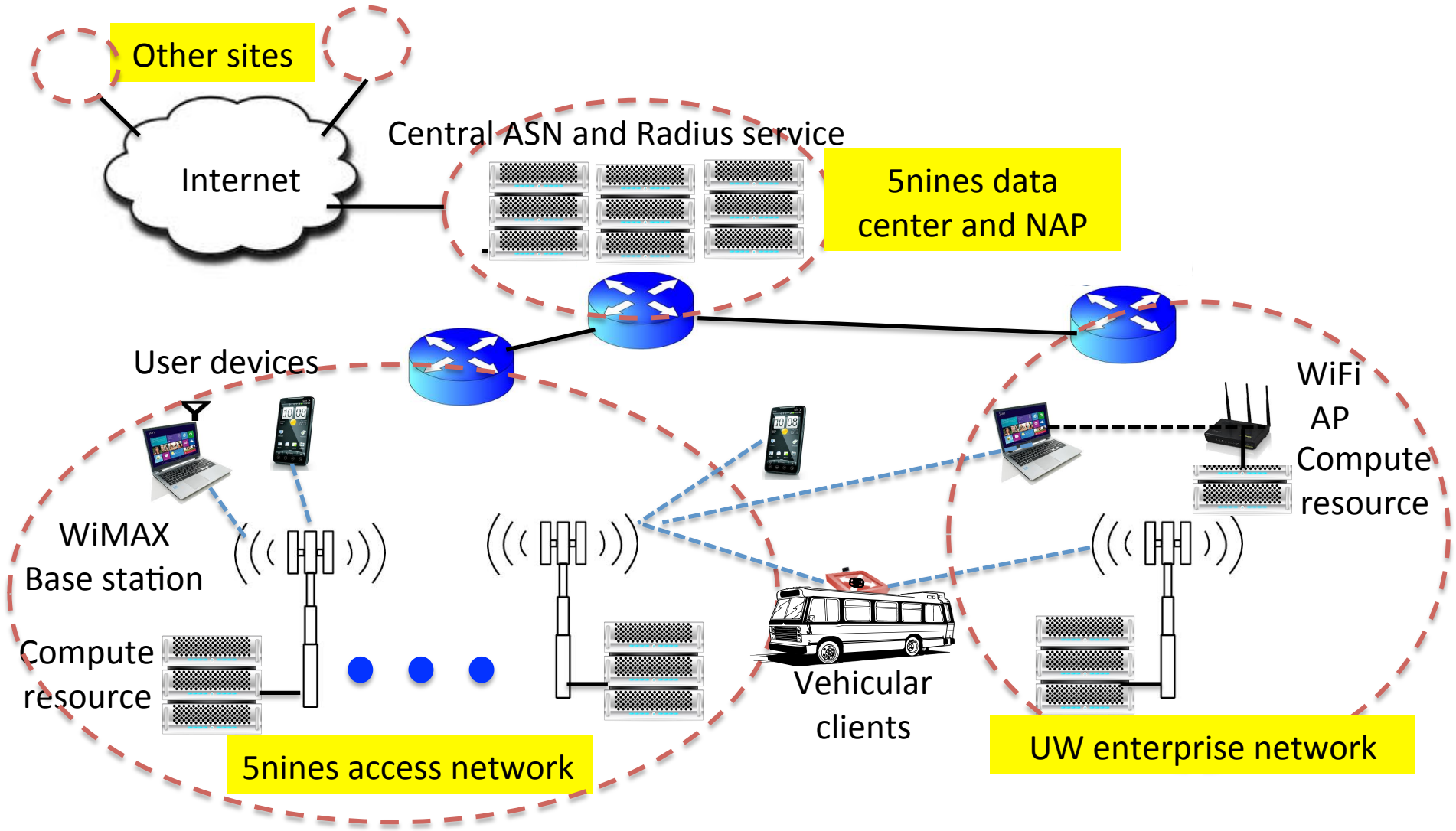
# Potential mobile users

- Controlled access to UW and to targeted users across the city
- Targeted apps and services





# Network plan



Logical structure of the various WiMAX and WiFi infrastructure to be used in experiments.

# Upgrade to LTE

- LTE services will be more important in the future
- Will upgrade as we migrate to use of LTE hardware

# Resources needed



Space

(Staff and students)



Personnel

# Possible model for management

- A consortium of partners led by UW-Madison WiNGS laboratory (headed by Prof. Banerjee)
- Partners to include:
  - UW-Madison
  - City of Madison
  - Madison Metro Transit
  - MGE
  - Private organizations (e.g., 5Nines)
- Full-time personnel in consortium to manage the infrastructure
  - Initial funding being sought by Prof. Banerjee through research grants, but local support is necessary for long-term