

PRELIMINARY PROPOSAL



1010 Colby Street
 Madison, Wisconsin 53715
 (608) 258-9731
 ironwoodassociates@yahoo.com

Proposal Submitted to Susan Eichhorn	Architect	
Street 215 Forest Street	Date of Plans	
City, State and Zip code Madison, Wi. 53726	Phone 608 238-3255	Date February 7, 2014

This is a nonbinding, preliminary proposal for informational purposes only, and is not intended as a contract.

The following is a list of the window unit prices and estimated labor costs for installation. It is designed to aid you in deciding which windows you would like to replace. After you've determined the scope of the project, we will generate a working proposal for you and proceed from there. Included with this budget is the list of window from our supplier to provide you with more specific product information. All prices listed below include sales tax.

- | | | |
|---|---|-----------|
| A | 1. Kitchen- west wall. Three replacement casement sashes. | |
| | Window price: \$ Labor \$ | Total: \$ |
| | 2. Kitchen- north wall. One double hung insert, existing trim to remain. | |
| | Window price: \$ Labor: \$ | Total: \$ |
| | 3. Morning room. One double hung insert, existing trim to remain. | |
| | Window price: \$ Labor: \$ | Total: \$ |
| | 4. Morning room. Two new casement windows with new framed openings, interior/exterior trim | |
| A | Window price: \$ Labor and additional materials: \$ | Total: \$ |
| | <i>double hung</i> | |
| | 5. Parlor. Two double hung inserts, existing trim to remain. | |
| A | Window price: \$ Labor: \$ | Total: \$ |
| | 6. Spa. One double hung insert, existing trim to remain. | |
| | Window price: \$ Labor: \$ | Total: \$ |
| X | 7. Spa . One new casement unit with new interior/exterior trim | |
| | Window price: \$ Labor and additional materials: \$ | Total: \$ |
| | 8. Bedrooms. Seven double hung inserts, existing trim to remain. | |
| | Window price: \$ Labor: \$ | Total: \$ |
| | 9. Southeast bedroom. Replace the existing door with a new window, framing, and interior/exterior trim. | |
| | Window price: \$ Labor and additional materials: \$ | Total: \$ |
| | 10. Second floor bathroom. One double hung insert, existing trim to remain. | |
| | Window price: \$ Labor: \$ | Total: \$ |
| | 11. Attic- windows flanking chimney. Two new casement units with new interior/exterior trim | |
| | Window price: \$ Labor and additional materials: \$ | Total: \$ |

Continued next page

12. Attic- Palladian window with a double hung center unit. Note: it should be pointed out here that a similar window, with a fixed center unit flanked by two casement units, would be priced significantly lower and afford more ventilation. This type of window, while not matching the original plans exactly, would be period appropriate.

Window price: \$ Labor and additional materials: \$ Total: \$

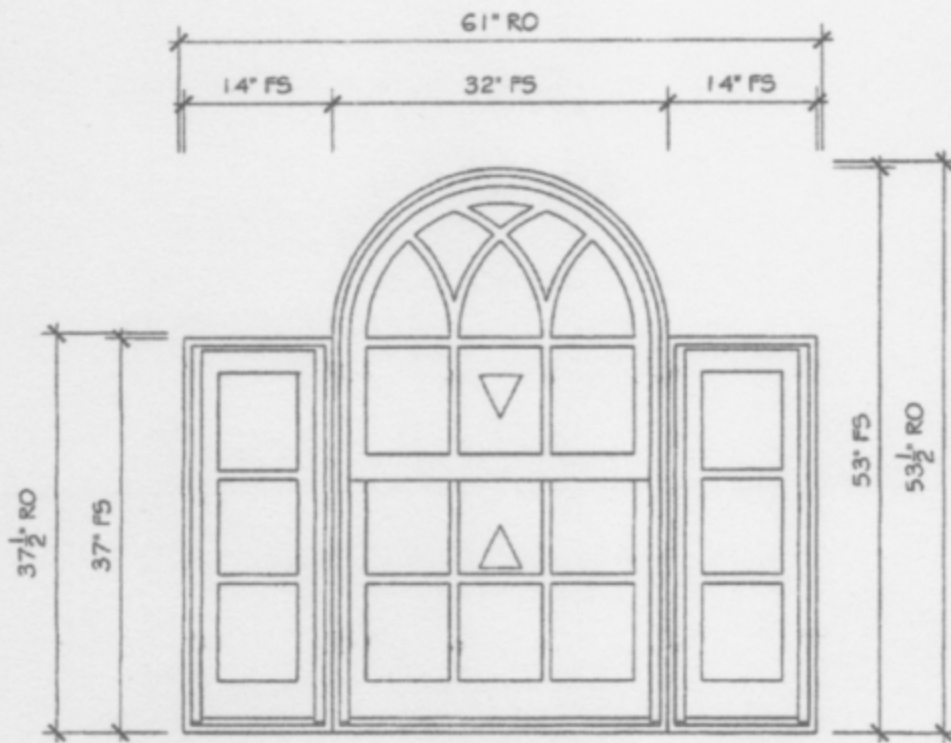
13. Additional window installation materials (metal trim for sill panning)

Total: \$

14. Starwell

Feel free to call me if you have any questions or require any clarification.

Regards, Bryan Whiting



ATTIC

SCALE: 3/4" = 1'-0"



DISTRIBUTOR: DEALER DIRECT-WI
 NUMBER: EICHHORN.dwg DATE: 01/21/14
 DRAWN: WBR REV DATE:

IRONWOOD/EICHHORN
 WINDOW DESIGN CENTER

SHEET
 1
 OF

3 of 12

LINE ITEM QUOTES

The following is a schedule of the windows and doors for this project. For additional unit details, please see Line Item Quotes. Additional charges, tax or Terms and Conditions may apply. Detail pricing is per unit.

Line #1	Mark Unit: KITCHEN	Net Price:	
Qty: 1		Ext. Net Price:	USD



Full around vnc



Entered As: IO
 FS 21 7/8" X 43 3/4"
 IO 22 1/4" X 44"

- Stone White Clad Exterior
- Primed Pine Interior
- Clad Ultimate Replacement Casement - Left Hand
- Inside Opening 22 1/4" X 44"
- 0 Degree Frame Bevel
- Stone White Clad Sash Exterior
- IG - 1 Lite
- LoE 272 w/Argon
- Stainless Perimeter and Spacer Bar
- 7/8" SDL - With Spacer Bar - Stainless
- Rectangular - Special Cut 2W4H
- Stone White Clad Ext - Primed Pine Int
- Ogee Glazing Profile
- Standard Bottom Rail
- White Weather Strip
- White Folding Handle
- White Multi - Point Lock
- Aluminum Screen
- White Surround
- Charcoal Fiberglass Mesh
- 2 3/16" Jamb
- No Installation Method
- ***Note: The overall frame depth will be 1 1/16" larger than the jamb size shown above. For example, a 3 1/4" overall frame depth will have a 2 3/16" jamb.

Line #2	Mark Unit: KITCHEN	Net Price:	
Qty: 1		Ext. Net Price:	USD



Full around vnc



Entered As: IO
 FS 21 7/8" X 43 3/4"
 IO 22 1/4" X 44"

- Stone White Clad Exterior
- Primed Pine Interior
- Clad Ultimate Replacement Casement - Stationary
- Inside Opening 22 1/4" X 44"
- 0 Degree Frame Bevel
- Stone White Clad Sash Exterior
- IG - 1 Lite
- LoE 272 w/Argon
- Stainless Perimeter and Spacer Bar
- 7/8" SDL - With Spacer Bar - Stainless
- Rectangular - Special Cut 2W4H
- Stone White Clad Ext - Primed Pine Int
- Ogee Glazing Profile
- Standard Bottom Rail
- White Weather Strip
- Solid Wood Covers
- 2 3/16" Jamb
- No Installation Method
- ***Note: The overall frame depth will be 1 1/16" larger than the jamb size shown above. For example, a 3 1/4" overall frame depth will have a 2 3/16" jamb.

Line #3	Mark Unit: KITCHEN	Net Price:	
Qty: 1		Ext. Net Price:	USD



Full around vnc

- Stone White Clad Exterior
- Primed Pine Interior
- Clad Ultimate Replacement Casement - Right Hand
- Inside Opening 22 1/4" X 44"
- 0 Degree Frame Bevel
- Stone White Clad Sash Exterior
- IG - 1 Lite
- LoE 272 w/Argon
- Stainless Perimeter and Spacer Bar

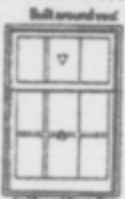
Kitchen con't



Entered As: IO
 FS 21 7/8" X 43 3/4"
 IO 22 1/4" X 44"

- 7/8" SDL - With Spacer Bar - Stainless Rectangular - Special Cut 2W4H
- Stone White Clad Ext - Primed Pine Int
- Ogee Glazing Profile
- Standard Bottom Rail
- White Weather Strip
- White Folding Handle
- White Multi - Point Lock
- Aluminum Screen
- White Surround
- Charcoal Fiberglass Mesh
- 2 3/16" Jamb
- No Installation Method
- ***Note: The overall frame depth will be 1 1/16" larger than the jamb size shown above. For example, a 3 1/4" overall frame depth will have a 2 3/16" jamb.

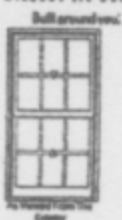
Line #4	Mark Unit: KITCHEN	Net Price:	
Qty: 1		Ext. Net Price:	USD



Entered As: IO
 FS 31 5/8" X 45 5/16"
 IO 32" X 45"

- Stone White Clad Exterior
- Primed Pine Interior
- Clad Ultimate Insert Double Hung
- Inside Opening 32" X 45"
- 8 Degree Frame Bevel
- Cottage 13.0:37.5625
- Top Sash
- Stone White Clad Sash Exterior
- G.S. 26 5/16" X 13"
- IG - 1 Lite
- LoE 272 w/Argon
- Stainless Perimeter and Spacer Bar
- 7/8" SDL - With Spacer Bar - Stainless Rectangular - Special Cut 3W1H
- Stone White Clad Ext - Primed Pine Int
- Ovolo Glazing Profile
- Bottom Sash
- Stone White Clad Sash Exterior
- G.S. 26 5/16" X 24 9/16"
- IG - 1 Lite
- LoE 272 w/Argon
- Stainless Perimeter and Spacer Bar
- 7/8" SDL - With Spacer Bar - Stainless Rectangular - Special Cut 3W2H
- Stone White Clad Ext - Primed Pine Int
- Ovolo Glazing Profile
- White Sash Lock
- Beige Jamb Hardware
- Aluminum Screen
- Stone White Surround
- Charcoal Fiberglass Mesh
- 3 1/4" Jamb

Line #5	Mark Unit: MORNING ROOM	Net Price:	
Qty: 1		Ext. Net Price:	USD



Entered As: IO
 FS 31 5/8" X 58 5/16"
 IO 32" X 58"

- Stone White Clad Exterior
- Primed Pine Interior
- Clad Ultimate Insert Double Hung
- Inside Opening 32" X 58"
- 8 Degree Frame Bevel
- Top Sash
- Stone White Clad Sash Exterior
- IG - 1 Lite
- LoE 272 w/Argon
- Stainless Perimeter and Spacer Bar
- 7/8" SDL - With Spacer Bar - Stainless Rectangular - Special Cut 3W2H
- Stone White Clad Ext - Primed Pine Int
- Ovolo Glazing Profile
- Bottom Sash
- Stone White Clad Sash Exterior
- IG - 1 Lite

- LoE 272 w/Argon
- Stainless Perimeter and Spacer Bar
- 7/8" SDL - With Spacer Bar - Stainless
- Rectangular - Special Cut 3W2H
- Stone White Clad Ext - Primed Pine Int
- Ovolo Glazing Profile
- White Sash Lock
- Beige Jamb Hardware
- Aluminum Screen
- Stone White Surround
- Charcoal Fiberglass Mesh
- 3 1/4" Jamb

Line #6	Mark Unit: MORNING ROOM	Net Price:	
Qty: 2		Ext. Net Price:	USD



Entered As: FS
 MO 56 1/2" X 72 1/4"
 FS 56" X 72"
 RO 57" X 72 1/2"

7 and parlour

- Stone White Clad Exterior
- Primed Pine Interior
- 2W1H - Rectangle Assembly
- Assembly Frame Size
- 56" X 72"
- Assembly Rough Opening
- 57" X 72 1/2"

Unit: A1
 Clad Ultimate Double Hung
 Basic Frame 28" X 72"
 Rough Opening 29" X 72 1/2"
 Top Sash
 Stone White Clad Sash Exterior
 IG - 1 Lite
 LoE 272 w/Argon
 Stainless Perimeter and Spacer Bar
 7/8" SDL - With Spacer Bar - Stainless
 Rectangular - Special Cut 3W3H
 Stone White Clad Ext - Primed Pine Int
 Ovolo Glazing Profile
 Bottom Sash
 Stone White Clad Sash Exterior
 IG - 1 Lite
 LoE 272 w/Argon
 Stainless Perimeter and Spacer Bar
 7/8" SDL - With Spacer Bar - Stainless
 Rectangular - Special Cut 3W3H
 Stone White Clad Ext - Primed Pine Int
 Ovolo Glazing Profile
 White Sash Lock
 Beige Jamb Hardware
 Aluminum Screen
 Stone White Surround
 Charcoal Fiberglass Mesh

Unit: A2
 Clad Ultimate Double Hung
 Basic Frame 28" X 72"
 Rough Opening 29" X 72 1/2"
 Top Sash
 Stone White Clad Sash Exterior
 IG - 1 Lite
 LoE 272 w/Argon
 Stainless Perimeter and Spacer Bar
 7/8" SDL - With Spacer Bar - Stainless
 Rectangular - Special Cut 3W3H
 Stone White Clad Ext - Primed Pine Int
 Ovolo Glazing Profile
 Bottom Sash
 Stone White Clad Sash Exterior
 IG - 1 Lite
 LoE 272 w/Argon
 Stainless Perimeter and Spacer Bar
 7/8" SDL - With Spacer Bar - Stainless
 Rectangular - Special Cut 3W3H
 Stone White Clad Ext - Primed Pine Int

Ovolo Glazing Profile
 White Sash Lock
 Beige Jamb Hardware
 Aluminum Screen
 Stone White Surround
 Charcoal Fiberglass Mesh
 Factory Mull Charge
 6 9/16" Jamb
 ***Jamb Extension Ship Loose
 No Installation Method

Line #7	Mark Unit: PARLOR	Net Price:	
Qty: 2		Ext. Net Price:	USD



Full surround view:



As Viewed From The Exterior

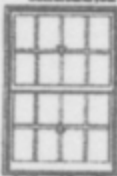
Entered As: IO
 FS 31 5/8" X 58 5/16"
 IO 32" X 58"

Stone White Clad Exterior
 Primed Pine Interior
 Clad Ultimate Insert Double Hung
 Inside Opening 32" X 58"
 8 Degree Frame Bevel
 Top Sash
 Stone White Clad Sash Exterior
 IG - 1 Lite
 LoE 272 w/Argon
 Stainless Perimeter and Spacer Bar
 7/8" SDL - With Spacer Bar - Stainless
 Rectangular - Special Cut 3W2H
 Stone White Clad Ext - Primed Pine Int
 Ovolo Glazing Profile
 Bottom Sash
 Stone White Clad Sash Exterior
 IG - 1 Lite
 LoE 272 w/Argon
 Stainless Perimeter and Spacer Bar
 7/8" SDL - With Spacer Bar - Stainless
 Rectangular - Special Cut 3W2H
 Stone White Clad Ext - Primed Pine Int
 Ovolo Glazing Profile
 White Sash Lock
 Beige Jamb Hardware
 Aluminum Screen
 Stone White Surround
 Charcoal Fiberglass Mesh
 3 1/4" Jamb

Line #8	Mark Unit: SPA	Net Price:	
Qty: 1		Ext. Net Price:	USD



Full surround view:



As Viewed From The Exterior

Entered As: IO
 FS 40 5/8" X 58 5/16"
 IO 41" X 58"

Stone White Clad Exterior
 Primed Pine Interior
 Clad Ultimate Insert Double Hung
 Inside Opening 41" X 58"
 8 Degree Frame Bevel
 Top Sash
 Stone White Clad Sash Exterior
 IG - 1 Lite
 LoE 272 w/Argon
 Stainless Perimeter and Spacer Bar
 7/8" SDL - With Spacer Bar - Stainless
 Rectangular - Special Cut 4W2H
 Stone White Clad Ext - Primed Pine Int
 Ovolo Glazing Profile
 Bottom Sash
 Stone White Clad Sash Exterior
 IG - 1 Lite
 LoE 272 w/Argon
 Stainless Perimeter and Spacer Bar
 7/8" SDL - With Spacer Bar - Stainless
 Rectangular - Special Cut 4W2H
 Stone White Clad Ext - Primed Pine Int
 Ovolo Glazing Profile
 White Sash Lock
 Beige Jamb Hardware

Aluminum Screen
 Stone White Surround
 Charcoal Fiberglass Mesh
 3 1/4" Jamb

Line #9	Mark Unit:	Net Price:	
Qty: 1	<i>1/2</i>	Ext. Net Price:	USD



Entered As: FS
 MO 15" X 47 1/4"
 FS 14 1/2" X 47"
 RO 15 1/2" X 47 1/2"

Stone White Clad Exterior
 Primed Pine Interior
 Clad Ultimate Casement - Left Hand
 Frame Size 14 1/2" X 47"
 Rough Opening 15 1/2" X 47 1/2"
 Stone White Clad Sash Exterior
 IG - 3/4 in - 1 Lite
 LoE 272 w/Argon
 Stainless Perimeter and Spacer Bar
 7/8" SDL - With Spacer Bar - Stainless
 Rectangular - Special Cut 1W4H
 Stone White Clad Ext - Primed Pine Int
 Ogee Glazing Profile
 Standard Bottom Rail
 White Weather Strip
 White Folding Handle
 White Multi - Point Lock
 Aluminum Screen
 White Surround
 Charcoal Fiberglass Mesh
 6 9/16" Jamb
 ***Jamb Extension Ship Loose
 No Installation Method
 ***Note: Rotating wash mode hardware not available on UCA, URCA, UPCA, and URPCA units with frame width less than 20".

Line #10	Mark Unit: STAIR	Net Price:	
Qty: 1		Ext. Net Price:	USD



Entered As: IO
 FS 31 5/8" X 58 5/16"
 IO 32" X 58"

Stone White Clad Exterior
 Primed Pine Interior
 Clad Ultimate Insert Double Hung
 Inside Opening 32" X 58"
 8 Degree Frame Bevel
 Glass Add For All Sash/Panels
 Top Sash
 Stone White Clad Sash Exterior
 IG - 1 Lite
 Tempered LoE 272 w/Argon
 Stainless Perimeter and Spacer Bar
 7/8" SDL - With Spacer Bar - Stainless
 Rectangular - Special Cut 3W2H
 Stone White Clad Ext - Primed Pine Int
 Ovolo Glazing Profile
 Bottom Sash
 Stone White Clad Sash Exterior
 IG - 1 Lite
 Tempered LoE 272 w/Argon
 Stainless Perimeter and Spacer Bar
 7/8" SDL - With Spacer Bar - Stainless
 Rectangular - Special Cut 3W2H
 Stone White Clad Ext - Primed Pine Int
 Ovolo Glazing Profile
 White Sash Lock
 Beige Jamb Hardware
 Aluminum Screen
 Stone White Surround
 Charcoal Fiberglass Mesh
 3 1/4" Jamb

Line #11	Mark Unit: BEDROOMS	Net Price:	
Qty: 5		Ext. Net Price:	USD



Entered As: IO
 FS 31 5/8" X 58 5/16"
 IO 32" X 58"

Stone White Clad Exterior
 Primed Pine interior
 Clad Ultimate Insert Double Hung
 Inside Opening 32" X 58"
 8 Degree Frame Bevel
 Top Sash
 Stone White Clad Sash Exterior
 IG - 1 Lite
 LoE 272 w/Argon
 Stainless Perimeter and Spacer Bar
 7/8" SDL - With Spacer Bar - Stainless
 Rectangular - Special Cut 3W2H
 Stone White Clad Ext - Primed Pine Int
 Ovoio Glazing Profile
 Bottom Sash
 Stone White Clad Sash Exterior
 IG - 1 Lite
 LoE 272 w/Argon
 Stainless Perimeter and Spacer Bar
 7/8" SDL - With Spacer Bar - Stainless
 Rectangular - Special Cut 3W2H
 Stone White Clad Ext - Primed Pine Int
 Ovoio Glazing Profile
 White Sash Lock
 Beige Jamb Hardware
 Aluminum Screen
 Stone White Surround
 Charcoal Fiberglass Mesh
 3 1/4" Jamb

Line #12	Mark Unit: BEDROOMS	Net Price:	
Qty: 2		Ext. Net Price:	USD

5



Entered As: IO
 FS 40 5/8" X 58 5/16"
 IO 41" X 58"

name at spa

Stone White Clad Exterior
 Primed Pine interior
 Clad Ultimate Insert Double Hung
 Inside Opening 41" X 58"
 8 Degree Frame Bevel
 Top Sash
 Stone White Clad Sash Exterior
 IG - 1 Lite
 LoE 272 w/Argon
 Stainless Perimeter and Spacer Bar
 7/8" SDL - With Spacer Bar - Stainless
 Rectangular - Special Cut 4W2H
 Stone White Clad Ext - Primed Pine Int
 Ovoio Glazing Profile
 Bottom Sash
 Stone White Clad Sash Exterior
 IG - 1 Lite
 LoE 272 w/Argon
 Stainless Perimeter and Spacer Bar
 7/8" SDL - With Spacer Bar - Stainless
 Rectangular - Special Cut 4W2H
 Stone White Clad Ext - Primed Pine Int
 Ovoio Glazing Profile
 White Sash Lock
 Beige Jamb Hardware
 Aluminum Screen
 Stone White Surround
 Charcoal Fiberglass Mesh
 3 1/4" Jamb

Line #13	Mark Unit: SOUTH EAST BEDROOM	Net Price:	
Qty: 1		Ext. Net Price:	USD

6



Built surround

Stone White Clad Exterior
 Primed Pine Interior
 Clad Ultimate Double Hung
 CN 3226
 Rough Opening 38 3/8" X 60 7/8"
 Top Sash

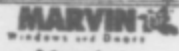


As Viewed From The Exterior

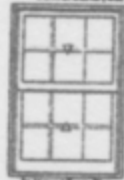
Entered As: CN
 MO 37 7/8" X 60 5/8"
 CN 3226
 FS 37 3/8" X 60 3/8"
 RO 38 3/8" X 60 7/8"

Stone White Clad Sash Exterior
 IG - 1 Lite
 LoE 272 w/Argon
 Stainless Perimeter and Spacer Bar
 7/8" SDL - With Spacer Bar - Stainless
 Rectangular - Special Cut 3W2H
 Stone White Clad Ext - Primed Pine Int
 Ovolo Glazing Profile
 Bottom Sash
 Stone White Clad Sash Exterior
 IG - 1 Lite
 LoE 272 w/Argon
 Stainless Perimeter and Spacer Bar
 7/8" SDL - With Spacer Bar - Stainless
 Rectangular - Special Cut 3W2H
 Stone White Clad Ext - Primed Pine Int
 Ovolo Glazing Profile
 White Sash Lock
 Beige Jamb Hardware
 Aluminum Screen
 Stone White Surround
 Charcoal Fiberglass Mesh
 6 9/16" Jamb
 ***Jamb Extension Ship Loose
 No Installation Method

Line #14	Mark Unit: 2ND FLOOR BATH	Net Price:	
Qty: 1		Ext. Net Price:	USD



Built around you.



As Viewed From The Exterior

Entered As: IO
 FS 31 5/8" X 46 5/16"
 IO 32" X 46"

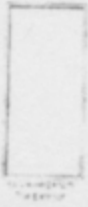
Stone White Clad Exterior
 Primed Pine Interior
 Clad Ultimate Insert Double Hung
 Inside Opening 32" X 46"
 8 Degree Frame Bevel
 Glass Add For All Sash/Panels
 Top Sash
 Stone White Clad Sash Exterior
 IG - 1 Lite
 Tempered LoE 272 w/Argon
 Stainless Perimeter and Spacer Bar
 7/8" SDL - With Spacer Bar - Stainless
 Rectangular - Special Cut 3W2H
 Stone White Clad Ext - Primed Pine Int
 Ovolo Glazing Profile
 Bottom Sash
 Stone White Clad Sash Exterior
 IG - 1 Lite
 Tempered LoE 272 w/Argon
 Stainless Perimeter and Spacer Bar
 7/8" SDL - With Spacer Bar - Stainless
 Rectangular - Special Cut 3W2H
 Stone White Clad Ext - Primed Pine Int
 Ovolo Glazing Profile
 White Sash Lock
 Beige Jamb Hardware
 Aluminum Screen
 Stone White Surround
 Charcoal Fiberglass Mesh
 3 1/4" Jamb

Line #15	Mark Unit: ATTIC	Net Price:	
Qty: 1		Ext. Net Price:	USD



Built around you.

Stone White Clad Exterior
 Primed Pine Interior
 Clad Ultimate Casement - Left Hand
 Frame Size 20" X 42"
 Rough Opening 21" X 42 1/2"
 Stone White Clad Sash Exterior
 IG - 3/4 In - 1 Lite
 LoE 272 w/Argon
 Stainless Perimeter and Spacer Bar



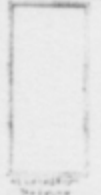
Entered As: FS
 MO 20 1/2" X 42 1/4"
 FS 20" X 42"
 RO 21" X 42 1/2"

7/8" SDL With Spacer Bar - Stainless
 Rectangular - Special Cut 2W3H
 Stone White Clad Ext Primed Pine Int
 Ogee Glazing Profile
 Standard Bottom Rail
 White Weather Strip
 White Folding Handle
 White Multi Point Lock
 Aluminum Screen
 White Surround
 Charcoal Fiberglass Mesh
 6 9/16" Jamb
 ***Jamb Extension Ship Loose
 No Installation Method

Line #16	Mark Unit: ATTIC	Net Price:	
Qty: 1		Ext. Net Price:	USD



Built around size



Entered As: FS
 MO 20 1/2" X 42 1/4"
 FS 20" X 42"
 RO 21" X 42 1/2"

Stone White Clad Exterior
 Primed Pine Interior
 Clad Ultimate Casement Right Hand
 Frame Size 20" X 42"
 Rough Opening 21" X 42 1/2"
 Stone White Clad Sash Exterior
 IG 3/4 in 1 Lite
 LoE 272 w/Argon
 Stainless Perimeter and Spacer Bar
 7/8" SDL With Spacer Bar - Stainless
 Rectangular - Special Cut 2W3H
 Stone White Clad Ext - Primed Pine Int
 Ogee Glazing Profile
 Standard Bottom Rail
 White Weather Strip
 White Folding Handle
 White Multi Point Lock
 Aluminum Screen
 White Surround
 Charcoal Fiberglass Mesh
 6 9/16" Jamb
 ***Jamb Extension Ship Loose
 No Installation Method

Line #17	Mark Unit: ATTIC	Net Price:	
Qty: 1		Ext. Net Price:	USD



Built around size
 Entered As: RO

3W2H
 Assembly Rough Opening:
 61" X 53 1/2"
 Unit: A2
 Marvin Clad Ultimate Double Hung
 C UDHR RT2 OPERATOR
 Rough Opening
 33" X 53 1/2"
 Stone White Ext Finish
 Primed Pine Int Finish
 IG
 LoE 272 Argon
 7/8 NO SPACER 6 GOTHIC, 9 RECT SDL
 WH SASH LOCK
 SW ALUM SCR N W/ CHARCOAL FG MESH

Unit: B1
 Marvin Clad Ultimate Double Hung
 C UDHP
 Rough Opening
 15" X 37 1/2"
 IG 1 in
 LoE 272 Argon
 7/8 NO SPACER 1W3H SDL

Unit: B3



SEE ATTACHED
 DRAWING

Marvin Clad Ultimate Double Hung
C UDHP
Rough Opening
15" X 37 1/2"
IG 1 in
LoE 272 Argon
7/8 NO SPACER 1W3H
VERT MULL
6 9/16" Jamb
SHIP JAMB LOOSE
***Note: ETO: Non-System Generated Pricing

Line #18	Mark Unit: TRIM	Net Price:	
Qty: 22		Ext. Net Price:	USD

No Image Available **Marvin Parts**
18651110 A1533, 3/4" PANNING, 150", SW

Project Subtotal Net Price: USD
5.500% Sales Tax: USD
Project Total Net Price: USD