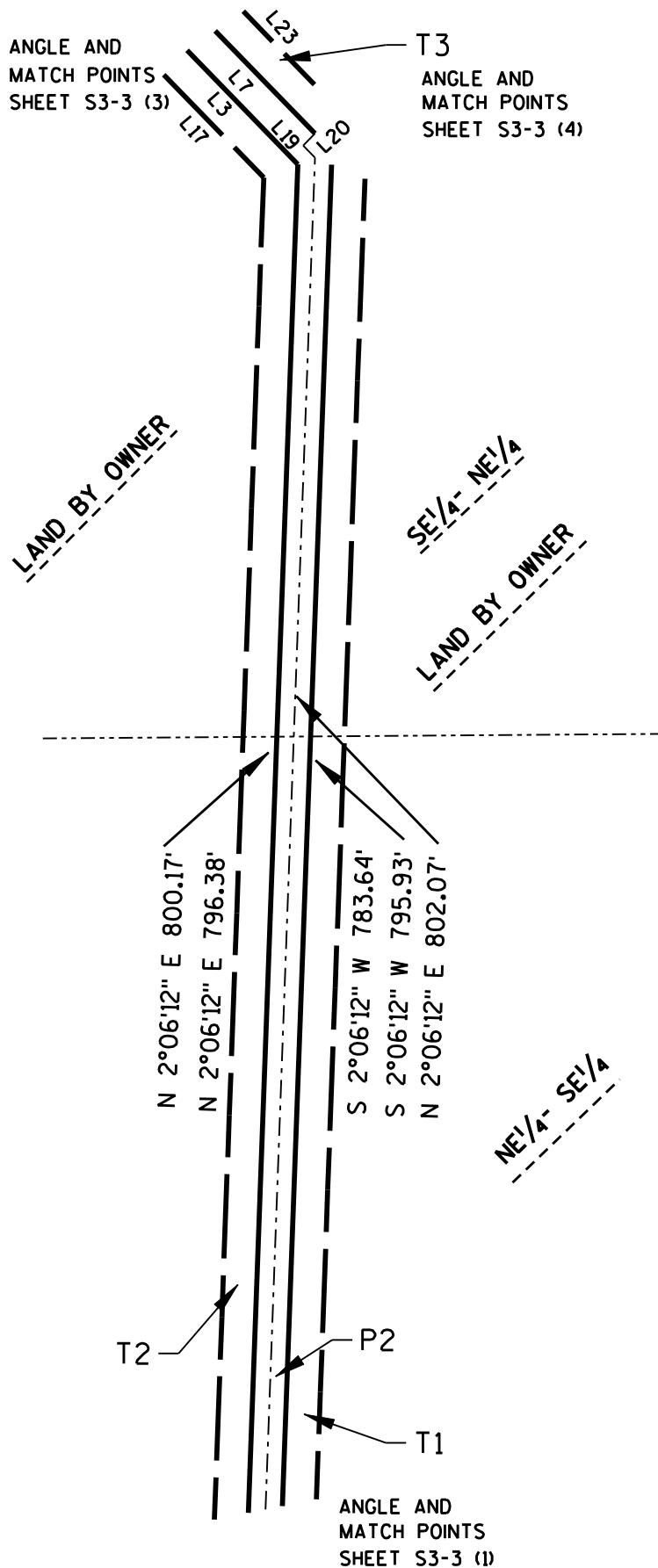


EXHIBIT S3-3 (2)

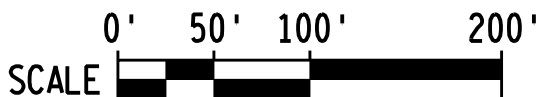
LOCATED IN PART SE¹/₄- NE¹/₄& PART
NE¹/₄- SE 1/4, SECTION 32, TOWNSHIP 7
NORTH, RANGE 8 EAST, TOWN OF
MIDDLETON, DANE COUNTY, WISCONSIN



LINE TABLE

No.	Direction	Distance
L1	S 89°41'24" W	10.74'
L2	N 21°45'52" W	127.58'
L3	N 44°11'54" W	94.34'
L4	N 9°41'34" W	250.88'
L5	N 89°38'44" E	20.27'
L6	S 9°41'34" E	244.85'
L7	S 44°11'54" E	84.85'
L8	S 43°07'43" E	135.95'
L9	S 2°02'05" W	28.20'
L10	N 43°07'43" W	134.58'
L11	S 89°41'24" W	10.74'
L12	S 2°02'05" W	28.20'
L13	N 43°07'43" W	133.22'
L14	S 89°41'24" W	21.49'
L15	S 89°41'24" W	21.49'
L16	N 21°45'52" W	119.21'
L17	N 44°11'54" W	89.12'
L18	N 89°38'44" E	20.27'
L19	N 44°11'54" W	10.01'
L20	N 43°23'55" E	10.01'
L21	N 89°38'44" E	20.27'
L22	S 9°41'34" E	238.83'
L23	S 44°11'54" E	60.66'
L24	S 43°07'43" E	137.31'
L25	S 2°02'05" W	28.20'
L26	N 1°03'38" E	45.73'

THIS INSTRUMENT WAS
DRAFTED BY EARTH TECH
EARTH TECH, INC.
MADISON, WI.



OWNER:
THE BRUCE COMPANY OF WISCONSIN
PO BOX 620330
MIDDLETON, WI. 53562 0330

EARTH TECH PROJECT NO. 84025

SHEET OF